

## SPEED READ

- Loads on wheels fell significantly overnight, reflecting a decline in both CN and CP volumes. On a net basis, volumes decreased due to lower traffic across all corridors - Vancouver, Thunder Bay, Prince Rupert, USA/MEX and E. Canada.
- After the count of idle cars nearly tripled over the course of the two prior days, network fluidity improved overnight, led by a decline in idle car counts on CP by 39% (-161) offset by an increase in idle car counts on CN by 3% (+19). The total count of cars for 4+ days on both railways increased significantly by 110% (+226) overnight - currently at 432 cars.
- Week 6 unloads concluded behind prior week's performance by 300 unloads, marking reduced unloads at Thunder Bay and Prince Rupert offset by improved week over week performance at Vancouver.

---

## Loads on Wheels

- Loads on wheels fell significantly by 12% (-861) overnight, due to reduced volumes on both CN and CP - combined total at 6,621 and 2% below the trailing 30-day average.
- On a net basis, the decline in loads on wheels reflects lower traffic across all corridors - Vancouver, Thunder Bay, Prince Rupert, USA/MEX and E. Canada.
- CN volumes declined 7% (-247) overnight, with lower traffic across all corridors other than E. Canada. System wide CN loads on wheels now at 3,340 and 3% above the trailing 30-day average.
- CP volumes declined 16% (-599) overnight, driven by a decline in traffic across all corridors other than USA/Mexico. CP system wide loads on wheels now at 3,073 and 9% below the trailing 30-day average.
- Vancouver now at 3,917, fell 10% (-440) overnight, now in line with the trailing 30-day average.
- The Prince Rupert pipeline currently at 392, the lowest seen in the last 30 days, fell significantly by 36% (-219) overnight, and 55% below the trailing 30-day average.
- Thunder Bay volumes fell 12% (-164) overnight - currently at 1,251 and 15% above the trailing 30-day average, with 67% of traffic moving on CP.

## Hopper Car Rationing

- No hopper cars were rationed by either CN or CP in week 5.

## Loads Not Moving

- **The count of cars not moving for 48+ hours declined 15% (-142) overnight, marking reduced counts on CP offset by higher counts on CN. Idle car counts presently at 830 and 12% above the trailing 30-day average.**
- CN
  - **The count of idle cars for 48+ hours increased 3% (+19) overnight and have now increased for the third consecutive day - presently at 575 cars.**
  - The number of cars idle for 4+ days increased significantly by 178% (+208) overnight - currently at 325 cars.
  - The count of cars not moving for 7+ days increased 73% (+27) overnight and have now increased for the fifth consecutive day - now at 64 cars.
  - Vancouver represents 56% of all idle cars.
  - In total 84% of all idle cars are dwelling at origin locations.
- CP
  - **CP idle car counts for 48+ hours decreased 39% (-161) overnight - currently at 255 cars.**
  - The number of cars idle for 4+ days increased 20% (+18) overnight - now at 107 cars.

- The number of cars idle for 7+ days fell 4% (-1) overnight - presently at 26 cars.
- Vancouver accounts for 60% of all idle cars.
- In total 56% of all idle cars are dwelling at origin locations.

### **Port Performance**

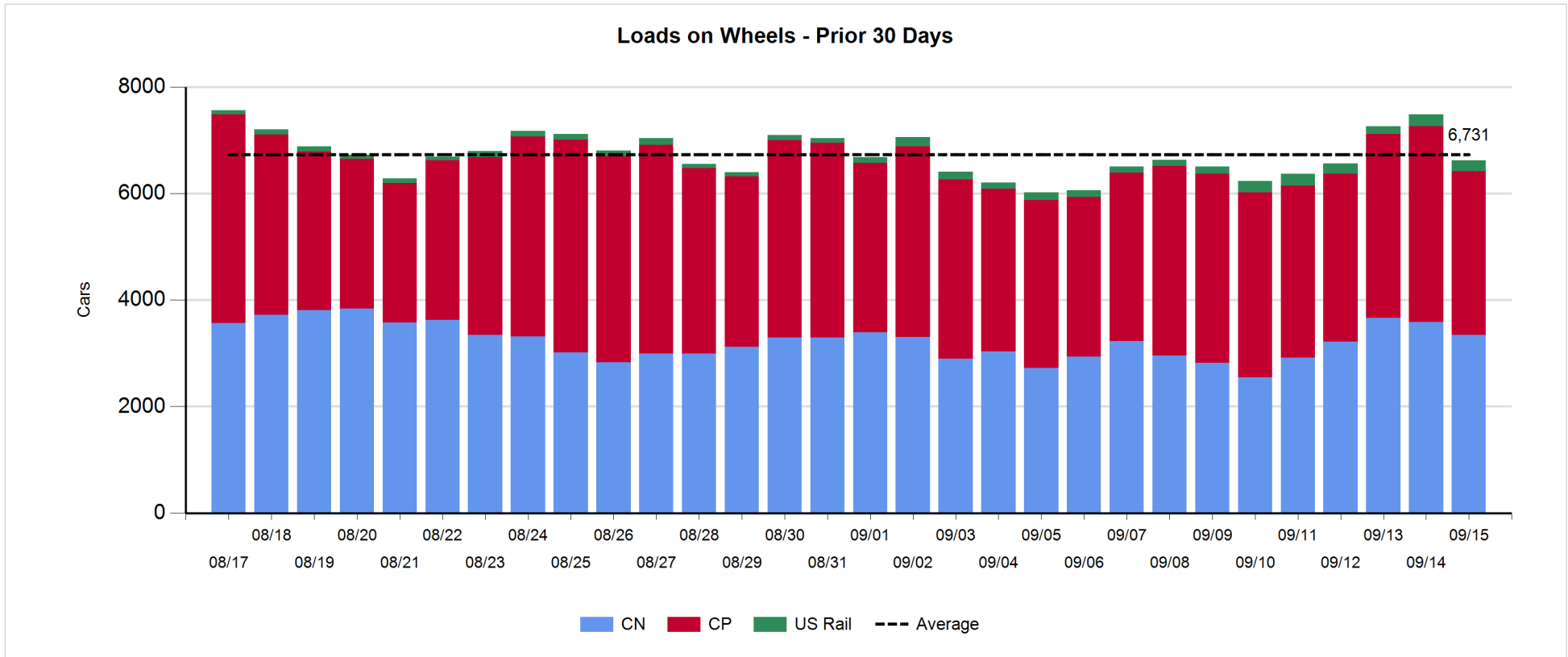
- CN and CP reported a total of 1,023 cars unloaded at the three major ports, now 8% above the trailing 30-day average. Week 6 unloads at slightly less than 6,500, finished behind last week's pace by 300 unloads, marking reduced unloads at Thunder Bay and Prince Rupert offset by higher unloads at Vancouver.
- Vancouver
  - 632 unloads reported by CN and CP at the Port of Vancouver; CN - 212 and CP - 420. Week 6 totaled fewer than 4,200 unloads finishing ahead of the prior week's performance by 250 unloads.
  - There are 900 cars on site at Vancouver with 850 cars arriving at the port in the last 24 hours.
  - CN and CP have 600 cars in British Columbia en route to Vancouver, with more than 250 cars at Kamloops and west, and 82% of traffic moving on CN.
- Prince Rupert
  - Prince Rupert reported 219 unloads, finishing the week below 1,000 unloads and nearly 150 unloads behind the prior week.
  - Loads on wheels now below 1,000 cars - currently at 392 cars. There are fewer than 1,700 total orders placed for the Prince Rupert corridor for weeks 6 and 7.
  - There are more than 200 cars west of Jasper en route to Prince Rupert.
  - There are 10 cars on site at Prince Rupert with more than 200 cars arriving at the port in the last 24 hours.
- Thunder Bay
  - 172 unloads were reported at Thunder Bay yesterday. Week 6 unloads ended behind last week's pace by more than 400 unloads.
  - There are more than 600 cars on site at Thunder Bay with 150 cars arriving at the port in the prior 24 hours.
  - There are more than 600 cars en route to Thunder Bay from Winnipeg and east.

**Daily Loads on Wheels - 9/15/2019**

	E Canada	Prince Rupert	Thunder Bay	USA/MEX	Vancouver	Total
CN	257	392	416	148	2,127	3,340
CP	136		835	326	1,776	3,073
Short Line	1				14	15
US Rail				193		193
	394	392	1,251	667	3,917	6,621

**Change in Loads on Wheels - Prior 24 Hours**

	E Canada	Prince Rupert	Thunder Bay	USA/MEX	Vancouver	Total
CN	6	-219	-18	-1	-15	-247
CP	-28		-146	0	-425	-599
Short Line	-2				0	-2
US Rail				-13		-13
	-24	-219	-164	-14	-440	-861

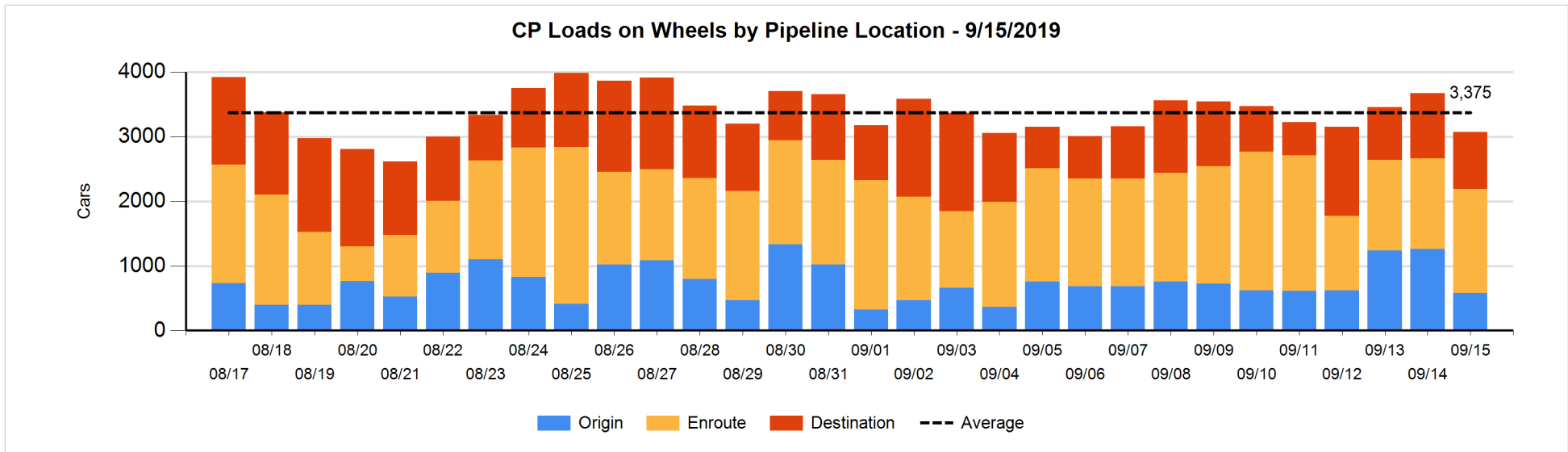
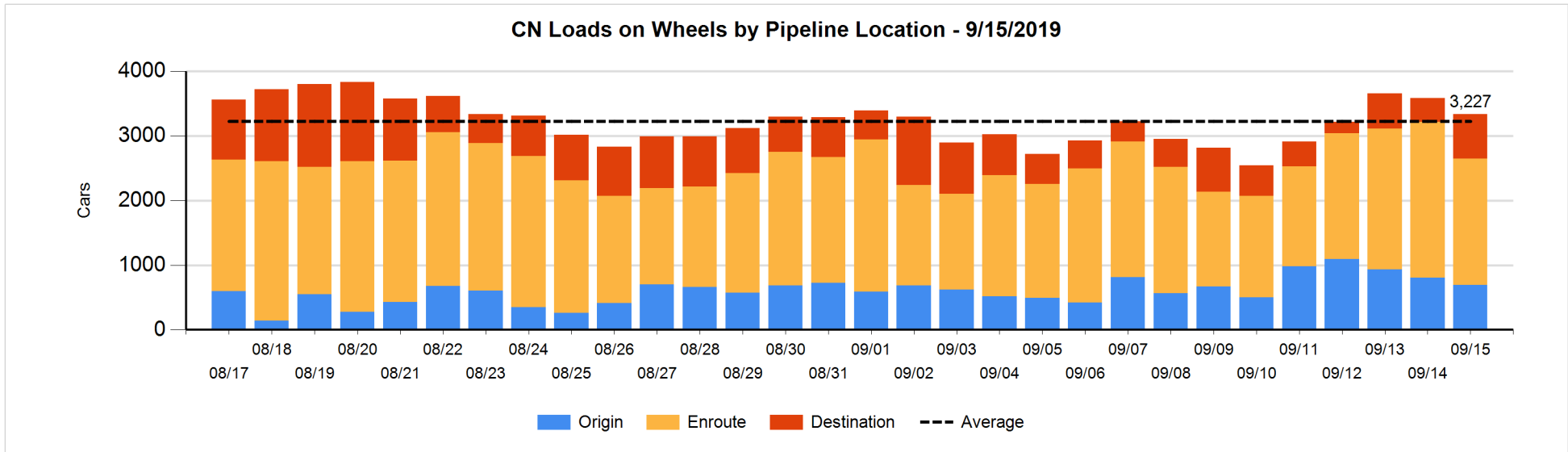


**Daily Loads on Wheels By Pipeline Location - 9/15/2019**

	E Canada	Prince Rupert	Thunder Bay	USA/MEX	Vancouver	Total
CN						
Origin		121		62	506	689
Enroute	216	261	126	54	1,305	1,962
Destination	41	10	290	32	316	689
	257	392	416	148	2,127	3,340
CP						
Origin	40		9	6	525	580
Enroute	95		503	320	690	1,608
Destination	1		323		561	885
	136		835	326	1,776	3,073
US Rail / Short Line						
Origin						
Enroute				30		30
Destination	1			163	14	178
	1			193	14	208

**Change in Daily Loads on Wheels By Pipeline Location - Prior 24 Hours**

	E Canada	Prince Rupert	Thunder Bay	USA/MEX	Vancouver	Total
CN						
Origin	-7	0	-126	0	18	-115
Enroute	1	-218	-8	0	-228	-453
Destination	12	-1	116	-1	195	321
	6	-219	-18	-1	-15	-247
CP						
Origin	-76		-147	-100	-360	-683
Enroute	63		136	100	-88	211
Destination	-15		-135		23	-127
	-28		-146	0	-425	-599
US Rail / Short Line						
Origin						
Enroute				-9		-9
Destination	-2			-4	0	-6
	-2			-13	0	-15

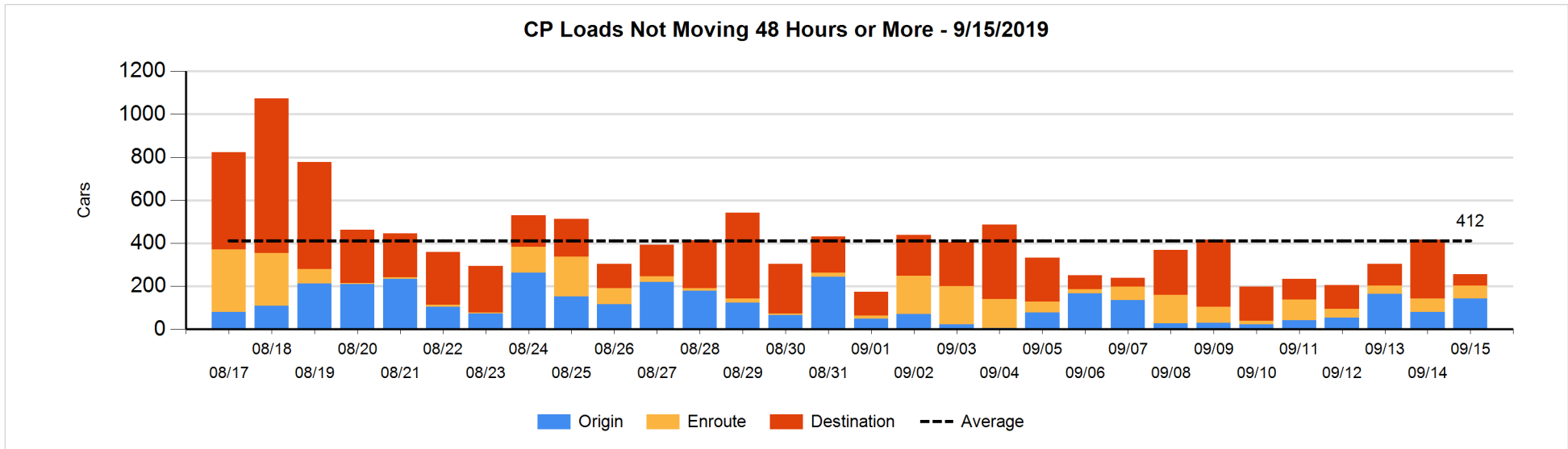
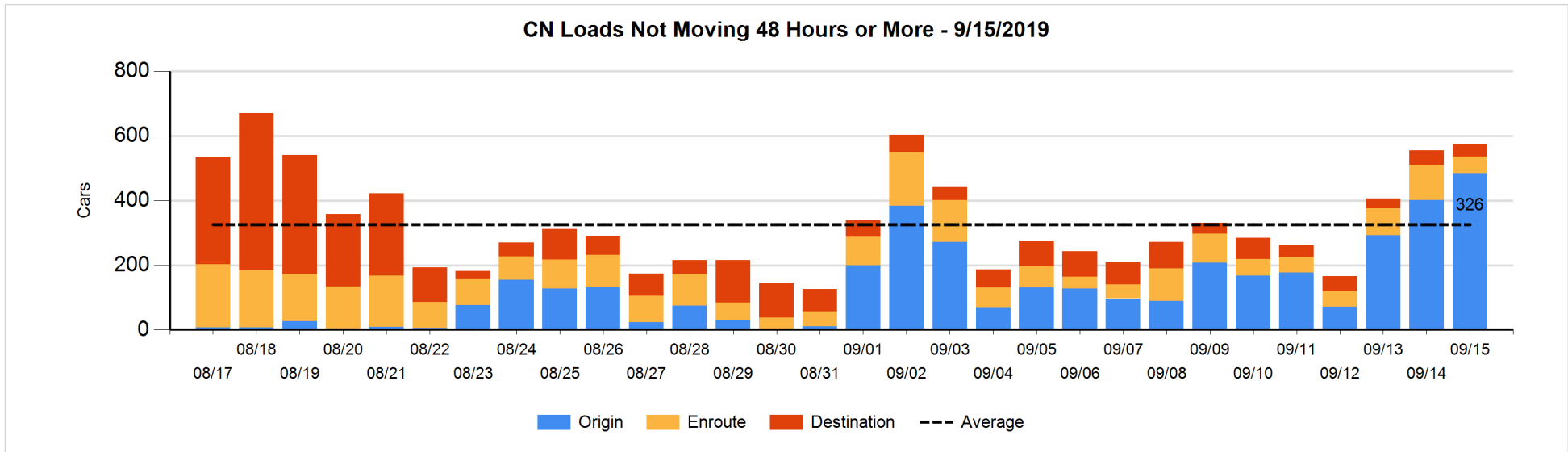


**Loads Not Moving 48 Hours or More - 9/15/2019**

	E Canada	Prince Rupert	Thunder Bay	USA/MEX	Vancouver	Total
<b>CN</b>						
Origin		121		62	302	485
Enroute	18	12		3	18	51
Destination	4		2	32	1	39
	22	133	2	97	321	575
<b>CP</b>						
Origin	40			6	97	143
Enroute	13			42	5	60
Destination	1				51	52
	54			48	153	255
<b>US Rail / Short Line</b>						
Origin						
Enroute				13		13
Destination	1			55	7	63
	1			68	7	76

**Change in Loads Not Moving 48 Hours or More - 9/15/2019**

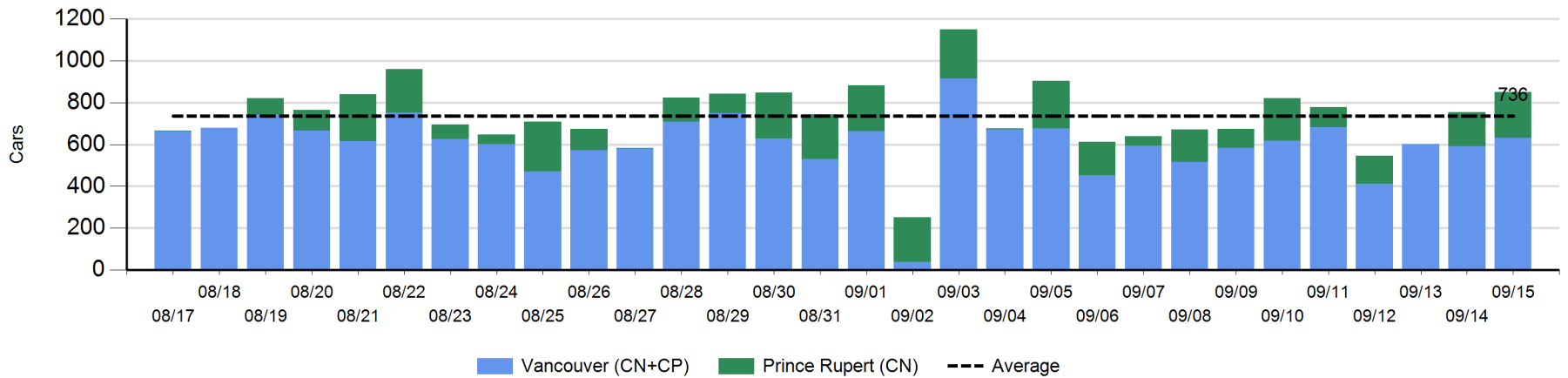
	E Canada	Prince Rupert	Thunder Bay	USA/MEX	Vancouver	Total
<b>CN</b>						
Origin	-2	18		26	41	83
Enroute	-49	0		-3	-5	-57
Destination	-12		-17	23	-1	-7
	-63	18	-17	46	35	19
<b>CP</b>						
Origin	38			1	24	63
Enroute	-7			1	2	-4
Destination	0		-37		-183	-220
	31		-37	2	-157	-161
<b>US Rail / Short Line</b>						
Origin						
Enroute				-9		-9
Destination	-2			-1	0	-3
	-2			-10	0	-12



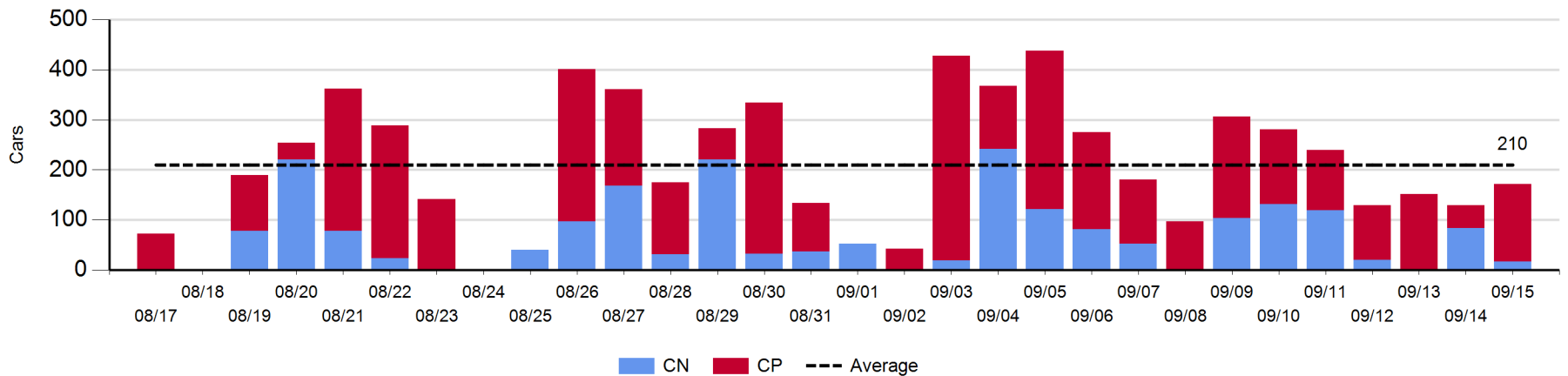
Port Unloads - 9/15/2019

	Prince Rupert	Vancouver	West Coast Total	Thunder Bay	Total
CN	219	212	431	17	448
CP		420	420	155	575
	219	632	851	172	1,023

West Coast Port Unloads - Prior 30 Days



Thunder Bay Port Unloads - Prior 30 Days





**Port Terminal Status**

**Vancouver**

Daily Activity for 9/15/2019

	Cars Arrived	Cars Received in Interchange	Cars Delivered in Interchange	Cars Placed for Unloading	Loads on Wheels at Destination As of 9/15/2019
CN	171	113	123	160	316
CP	682	123	113	327	561
SRY					14

**Port Unloads**

	09/15	09/14	Week To Date	Last Week
CN	212	245	1,446	1,258
CP	420	347	2,673	2,603
SRY		2	51	63

**Age Profile of Loaded Cars Waiting Placement for Unloading**

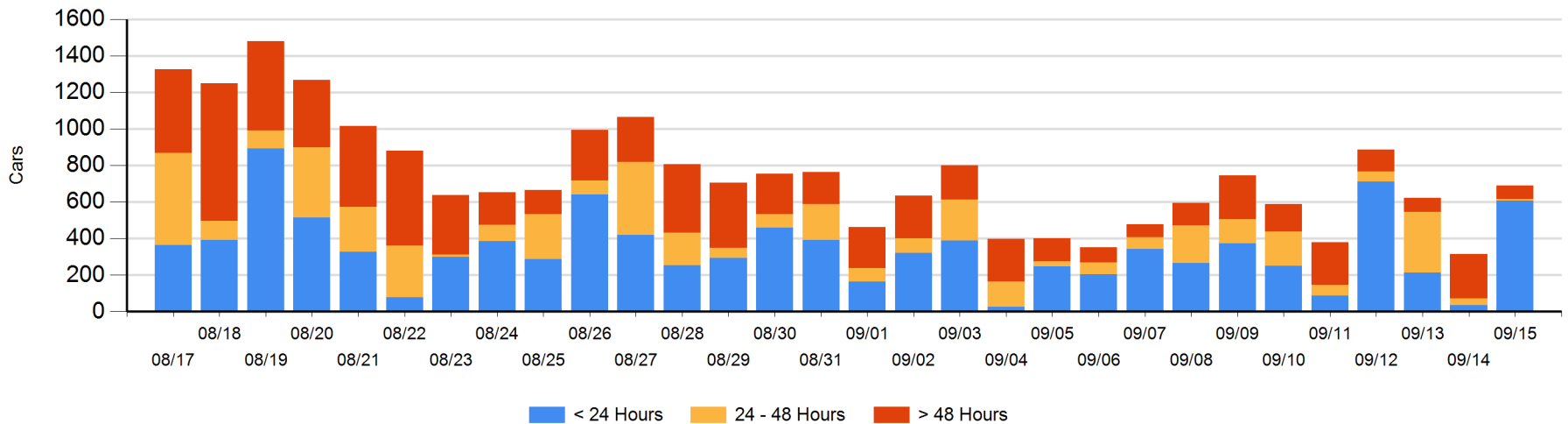
**Today**

	< 24 Hrs	24 - 48 Hrs	> 48-72 Hrs	> 72 Hrs	Total On Hand
CN	135	7		8	150
CP	471	4	27	36	538
SRY				3	3

**Change in Last 24 Hours**

	< 24 Hrs	24-48 Hrs	48 - 72 Hrs	> 72 Hrs
CN	111	-1		0
CP	459	-23	-185	14
SRY				0

**Loaded Cars on Hand Vancouver Waiting for Placement - Last 30 Days All Railways**



**Port Terminal Status**

**Prince Rupert**

Daily Activity for 9/15/2019

	Cars Arrived	Cars Received in Interchange	Cars Delivered in Interchange	Cars Placed for Unloading	Loads on Wheels at Destination As of 9/15/2019
CN	218			218	10

**Port Unloads**

	09/15	09/14	Week To Date	Last Week
CN	219	163	906	1,040

**Age Profile of Loaded Cars Waiting Placement for Unloading**

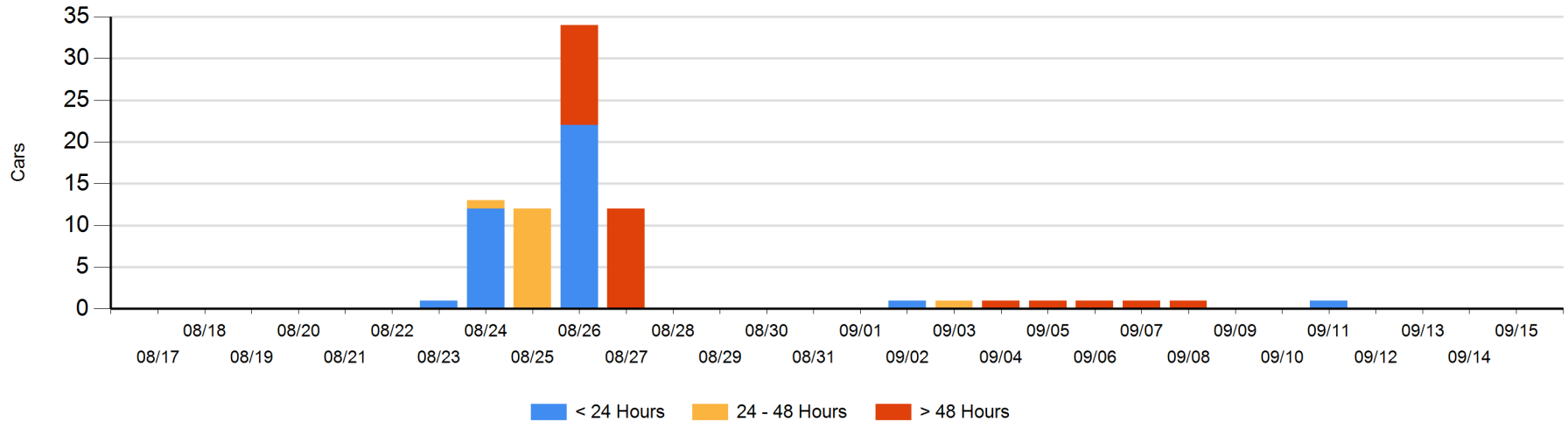
**Today**

	< 24 Hrs	24 - 48 Hrs	> 48-72 Hrs	> 72 Hrs	Total On Hand
CN					0

**Change in Last 24 Hours**

	< 24 Hrs	24-48 Hrs	48 - 72 Hrs	> 72 Hrs
CN				

Loaded Cars on Hand Prince Rupert Waiting for Placement - Last 30 Days All Railways



**Port Terminal Status**

**Thunder Bay**

Daily Activity for 9/15/2019

	Cars Arrived	Cars Received in Interchange	Cars Delivered in Interchange	Cars Placed for Unloading	Loads on Wheels at Destination As of 9/15/2019
CN	134				290
CP	20			206	323

**Port Unloads**

	09/15	09/14	Week To Date	Last Week
CN	17	84	475	517
CP	155	45	933	1,311

**Age Profile of Loaded Cars Waiting Placement for Unloading**

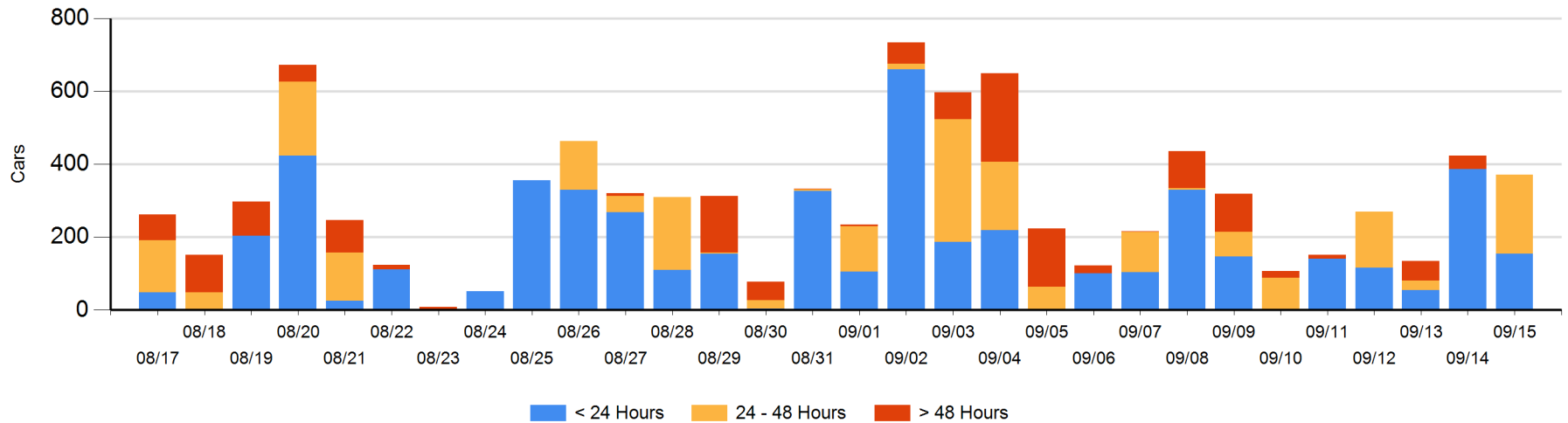
**Today**

	< 24 Hrs	24 - 48 Hrs	> 48-72 Hrs	> 72 Hrs	Total On Hand
CN	134				134
CP	20	217			237

**Change in Last 24 Hours**

	< 24 Hrs	24-48 Hrs	48 - 72 Hrs	> 72 Hrs
CN	134			
CP	-366	217	-26	-11

**Loaded Cars on Hand Thunder Bay Waiting for Placement - Last 30 Days All Railways**



## Measurement Definitions

Loads on Wheels	<p>Count of loaded rail cars including all rail cars that have been released loaded at origin and have not been reported by the railway as unloaded at destination.</p> <p>Counts include all rail cars (hopper cars and boxcars) moving within a pipeline.</p>
Loads Not Moving	<p>Loaded rail cars for which the railways have not reported a movement event for 48 hours or more whether the rail car is at origin, enroute or at destination.</p>
Port Unloads	<p>Count of rail cars reported by railways as unloaded at the western port destinations of Vancouver, Prince Rupert and Thunder Bay.</p> <p>Unload counts include all rail cars (hopper cars and boxcars) unloaded by all receivers including major port terminals, transloaders and other receivers.</p>
Cars Arrived	<p>Count of rail cars reported as arrived at the destination railway terminal.</p>
Cars Received in Interchange	<p>Count of rail cars received in interchange by each railway within a destination railway terminal. Interchange activity is tracked for the Vancouver and Thunder Bay pipelines as applicable.</p>
Cars Delivered in Interchange	<p>Count of rail cars delivered in interchange by each railway within a destination railway terminal. Interchange activity is tracked for the Vancouver and Thunder Bay pipelines as applicable.</p>
Cars Placed for Unloading	<p>Count of rail cars reported by the railways as placed loaded at the receiver's facility for unloading.</p>
Loads on Wheels at Destination	<p>Count of rail cars that remain under load within the destination railway terminal including rail cars that have been reported as placed for unloading but not yet reported as unloaded.</p>
Waiting Placement for Unloading	<p>Count of rail cars that have been reported as arrived at the destination railway terminal but not reported as placed for unloading by the railway.</p> <p>For the Ports of Vancouver, Prince Rupert and Thunder Bay the count of rail cars waiting placement for unloading is categorized by age – i.e. the elapsed time from arrival at destination to the current report date.</p>