

SPEED READ

- Loads on wheels fell marginally overnight, reflecting a decline in CN volumes offset by higher CP volumes. On a net basis, volumes fell due to lower volumes in the Thunder Bay, USA/MEX and E. Canada corridors offset by higher traffic in the Prince Rupert and Vancouver corridors.
- Network fluidity deteriorated overnight, led by an increase in idle car counts on CP by 93% (+240) offset by a decline in idle car counts on CN by 22% (-126). The total count of cars for 4+ days on both railways fell 36% (-155) overnight - presently at 274 cars.
- One day in Week 7 unloads now ahead of prior week's performance by less than 50 unloads, reflecting improved week over week performance at Thunder Bay offset by lower unloads at Vancouver and Prince Rupert.

=====

Loads on Wheels

- Loads on wheels fell marginally by 1% (-70) overnight, due to lower traffic on CN offset by higher traffic on CP - combined total at 6,552 and 2% below the trailing 30-day average.
- On a net basis, the decline in loads on wheels reflects lower volumes in the Thunder Bay, USA/MEX and E. Canada corridors offset by higher traffic in the Prince Rupert and Vancouver corridors.
- CN volumes fell 9% (-292) overnight and have now decreased for the third consecutive day, with reduced traffic in the Vancouver, Thunder Bay and E. Canada corridors offset by higher volumes in the Prince Rupert and USA/MEX corridors. System wide CN loads on wheels now at 3,047 and 5% below the trailing 30-day average.
- CP volumes increased 7% (+228) overnight, driven by a rise in volumes in the Vancouver and E. Canada corridors offset by a decline in volumes in the USA/MEX and Thunder Bay corridors. CP system wide loads on wheels presently at 3,303 and 2% below the trailing 30-day average.
- Vancouver presently at 3,938, increased marginally by (+19) overnight, now 2% above the trailing 30-day average.
- The Prince Rupert pipeline presently at 510, increased 30% (+119) overnight, and 41% below the trailing 30-day average.
- Thunder Bay volumes declined 12% (-144) overnight - presently at 1,107 and 2% above the trailing 30-day average, with 72% of traffic moving on CP.

Hopper Car Rationing

- No hopper cars were rationed by either CN or CP in week 5.

Loads Not Moving

- **The count of cars not moving for 48+ hours increased 14% (+114) overnight, reflecting higher counts on CP offset by lower counts on CN. Idle car counts presently at 943 and 30% above the trailing 30-day average.**
- CN
 - **The count of idle cars for 48+ hours decreased 22% (-126) overnight - presently at 446 cars.**
 - The number of cars idle for 4+ days decreased 55% (-178) overnight - now at 144 cars.
 - The count of cars not moving for 7+ days gained 5% (+3) overnight and have now increased for the sixth consecutive day - presently at 67 cars.
 - Vancouver represents 52% of all idle cars.
 - In total 61% of all idle cars are dwelling at origin locations.
- CP
 - **CP idle car counts for 48+ hours gained significantly by 93% (+240) overnight - presently at 497 cars.**
 - The number of cars idle for 4+ days increased for the third consecutive day, up 21% (+23) overnight - presently at 130 cars.

- The number of cars idle for 7+ days gained 4% (+1) overnight - presently at 27 cars.
- Vancouver accounts for 74% of all idle cars.
- In total 68% of all idle cars are dwelling at origin locations.

Port Performance

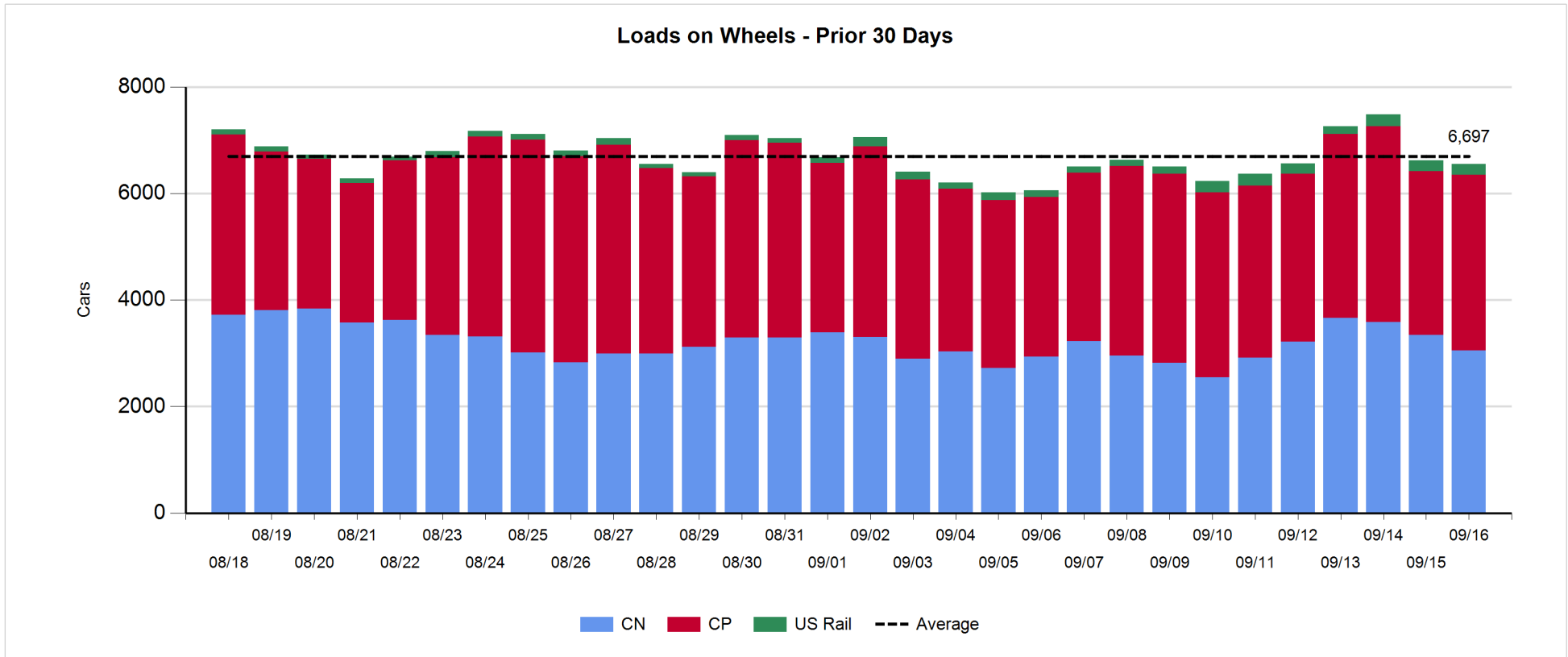
- CN and CP reported a total of 1,009 cars unloaded at the three major ports, now 5% above the trailing 30-day average. One day in Week 7 unloads now ahead of last week's pace by nearly 50 unloads, reflecting higher unloads at Thunder Bay offset by lower unloads at Vancouver and Prince Rupert.
- Vancouver
 - 568 unloads reported by CN and CP at the Port of Vancouver; CN - 155 and CP - 413. One day in Week 7 unloads are tracking roughly at par with last week's pace.
 - There are 700 cars on site at Vancouver with more than 350 cars arriving at the port in the last 24 hours.
 - CN and CP have 1,100 cars in British Columbia en route to Vancouver, with around 250 cars at Kamloops and west, and 56% of traffic moving on CN.
- Prince Rupert
 - Prince Rupert reported 89 unloads and one day into Week 7 are tracking at last week's pace.
 - Loads on wheels remain below 1,000 cars - currently at 510 cars.
 - There are more than 50 cars west of Jasper en route to Prince Rupert.
 - There are 50 cars on site at Prince Rupert with nearly 150 cars arriving at the port in the last 24 hours.
- Thunder Bay
 - 352 unloads were reported at Thunder Bay yesterday. One day in Week 7 unloads are tracking ahead of last week's pace by 50 unloads.
 - There are nearly 900 cars on site at Thunder Bay with more than 600 cars arriving at the port in the prior 24 hours.
 - There is 1 car en route to Thunder Bay from Winnipeg and east.

Daily Loads on Wheels - 9/16/2019

	E Canada	Prince Rupert	Thunder Bay	USA/MEX	Vancouver	Total
CN	237	510	307	193	1,800	3,047
CP	138		800	249	2,116	3,303
Short Line	5				22	27
US Rail				175		175
	380	510	1,107	617	3,938	6,552

Change in Loads on Wheels - Prior 24 Hours

	E Canada	Prince Rupert	Thunder Bay	USA/MEX	Vancouver	Total
CN	-20		119	45	-327	-292
CP	2		-35	-77	338	228
Short Line	4				8	12
US Rail				-18		-18
	-14	119	-144	-50	19	-70

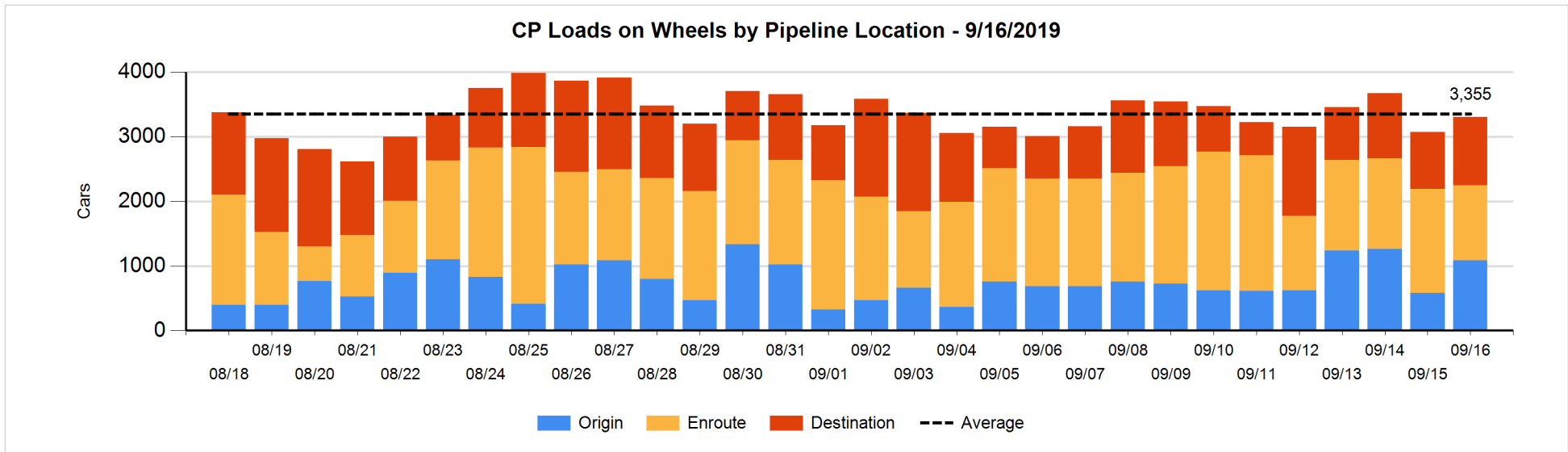
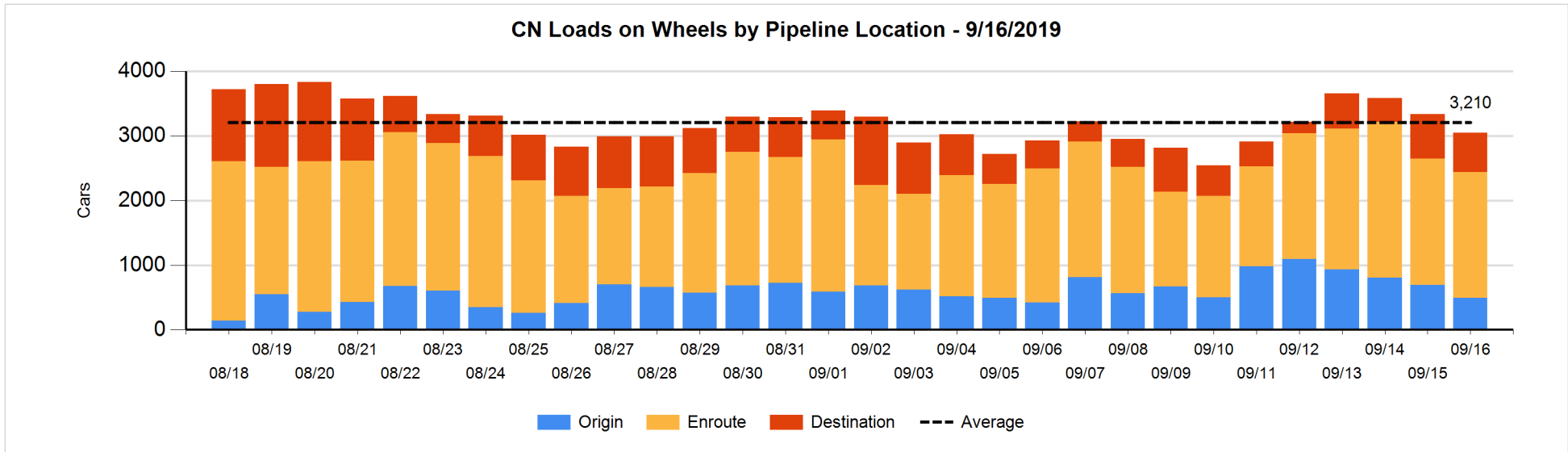


Daily Loads on Wheels By Pipeline Location - 9/16/2019

	E Canada	Prince Rupert	Thunder Bay	USA/MEX	Vancouver	Total
CN						
Origin	3	126		102	259	490
Enroute	211	328		64	1,344	1,947
Destination	23	56	307	27	197	610
	237	510	307	193	1,800	3,047
CP						
Origin	46		209	6	824	1,085
Enroute	91		10	243	820	1,164
Destination	1		581		472	1,054
	138		800	249	2,116	3,303
US Rail / Short Line						
Origin						
Enroute	4			56		60
Destination	1			119	22	142
	5			175	22	202

Change in Daily Loads on Wheels By Pipeline Location - Prior 24 Hours

	E Canada	Prince Rupert	Thunder Bay	USA/MEX	Vancouver	Total
CN						
Origin	3	5		40	-247	-199
Enroute	-4	68	-126	10	39	-13
Destination	-19	46	17	-5	-119	-80
	-20	119	-109	45	-327	-292
CP						
Origin	6		200	0	299	505
Enroute	-4		-493	-77	128	-446
Destination	0		258		-89	169
	2		-35	-77	338	228
US Rail / Short Line						
Origin						
Enroute	4			26		30
Destination	0			-44	8	-36
	4			-18	8	-6

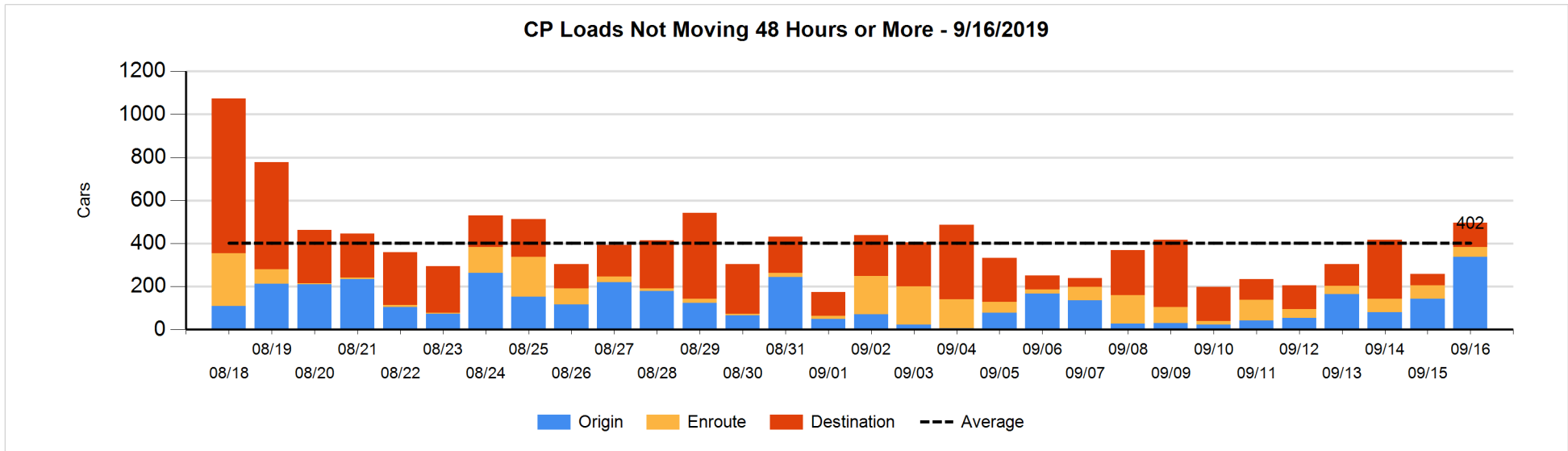
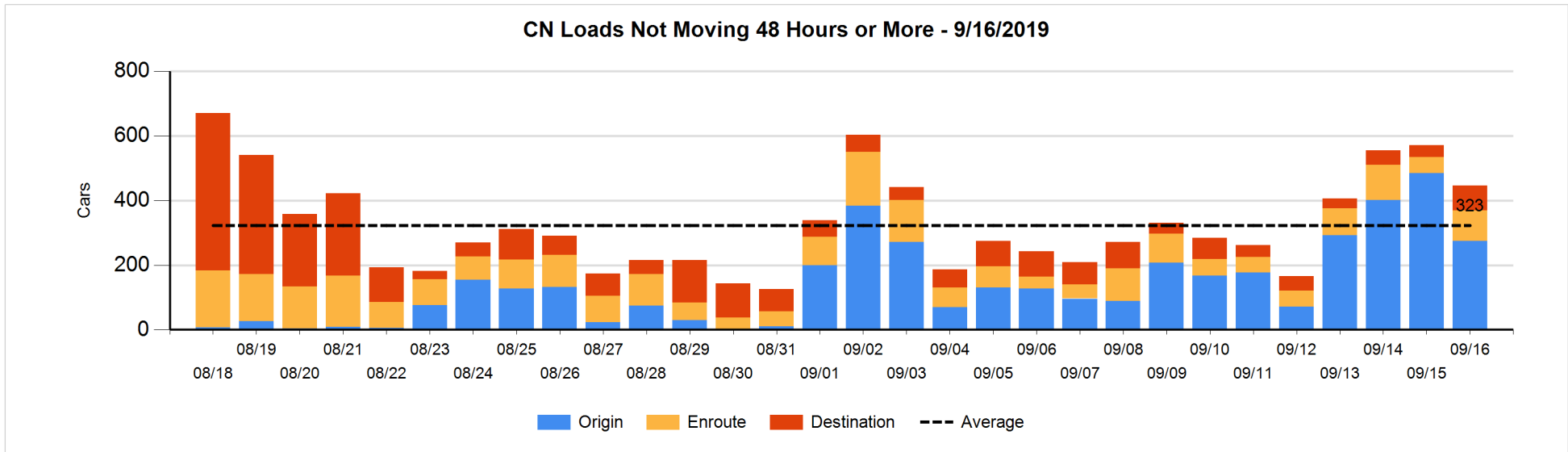


Loads Not Moving 48 Hours or More - 9/16/2019

	E Canada	Prince Rupert	Thunder Bay	USA/MEX	Vancouver	Total
CN						
Origin		22		47	205	274
Enroute	63	12		2	19	96
Destination	4	1	47	14	10	76
	67	35	47	63	234	446
CP						
Origin	40			6	291	337
Enroute	7			32	7	46
Destination	1		44		69	114
	48		44	38	367	497
US Rail / Short Line						
Origin						
Enroute				12		12
Destination	1			64	6	71
	1			76	6	83

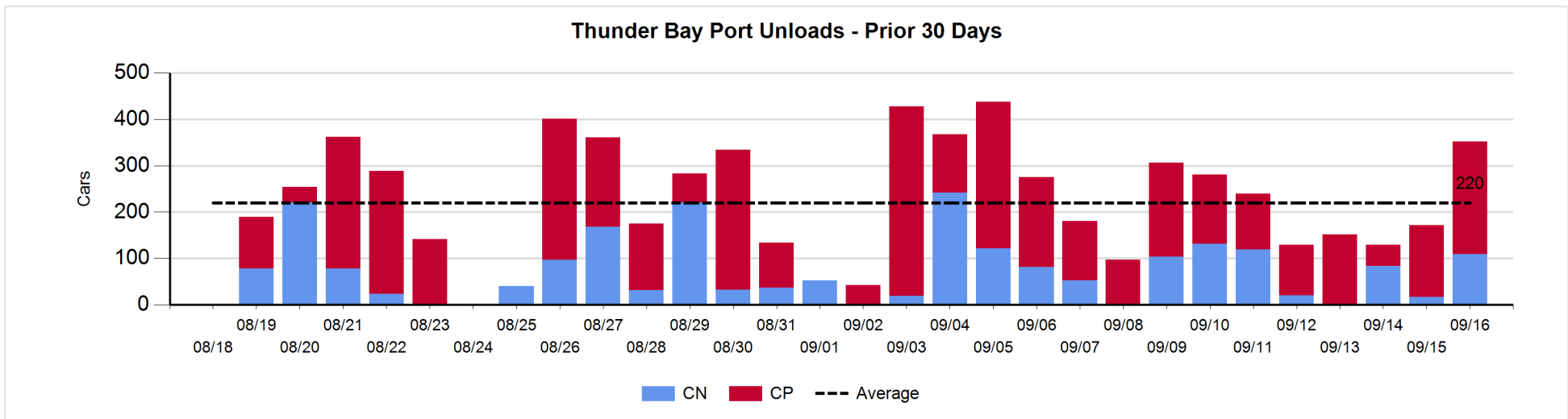
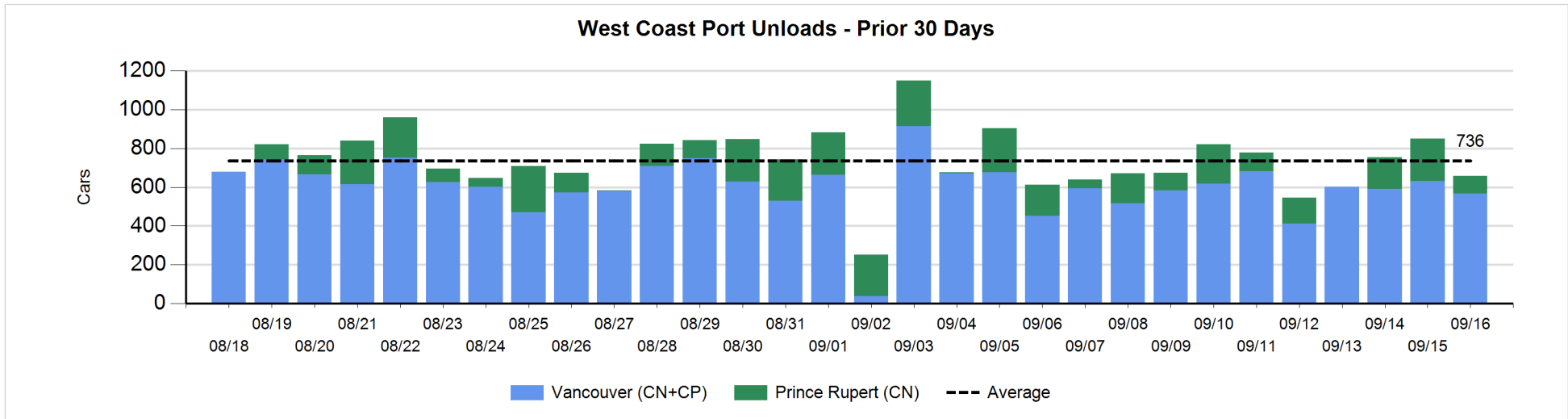
Change in Loads Not Moving 48 Hours or More - 9/16/2019

	E Canada	Prince Rupert	Thunder Bay	USA/MEX	Vancouver	Total
CN						
Origin		-99		-15	-97	-211
Enroute	46	1		-1	1	47
Destination	1	1	45	-18	9	38
	47	-97	45	-34	-87	-126
CP						
Origin	0			0	194	194
Enroute	-6			-10	0	-16
Destination	0		44		18	62
	-6		44	-10	212	240
US Rail / Short Line						
Origin						
Enroute				-1		-1
Destination	0			9	-1	8
	0			8	-1	7



Port Unloads - 9/16/2019

	Prince Rupert	Vancouver	West Coast Total	Thunder Bay	Total
CN	89	155	244	109	353
CP		413	413	243	656
	89	568	657	352	1,009



Port Terminal Status

Vancouver

Daily Activity for 9/16/2019

	Cars Arrived	Cars Received in Interchange	Cars Delivered in Interchange	Cars Placed for Unloading	Loads on Wheels at Destination As of 9/16/2019
CN	265	1	109	182	197
CP	110	94	4	369	472
SRY	1	18		8	22

Port Unloads

	09/16	09/15	Week To Date	Last Week
CN	155	212	155	1,446
CP	413	420	413	2,673
SRY	8		8	51

Age Profile of Loaded Cars Waiting Placement for Unloading

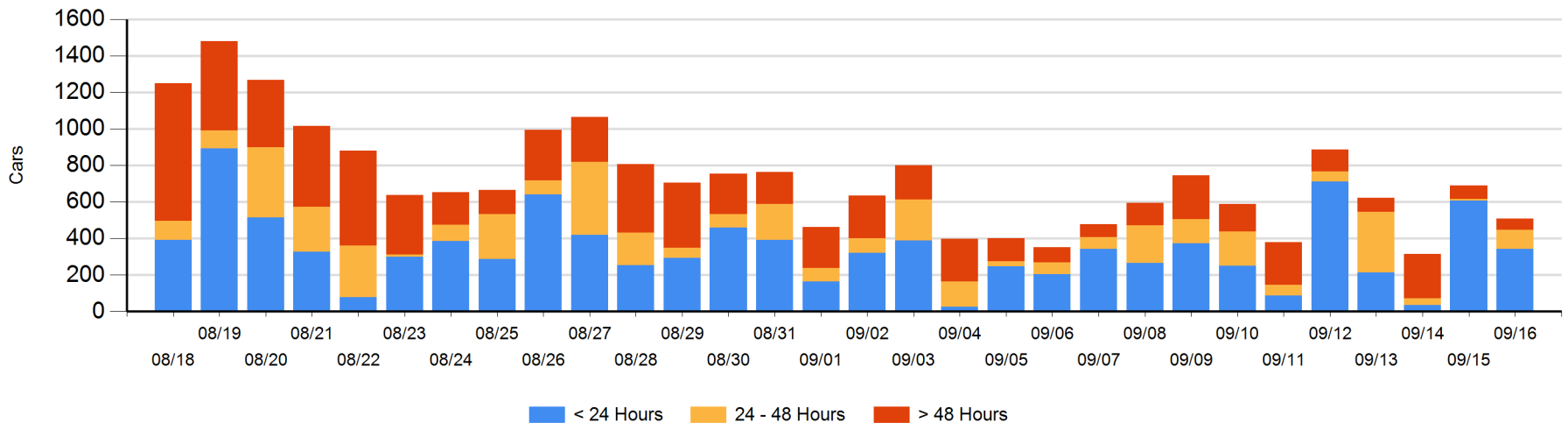
Today

	< 24 Hrs	24 - 48 Hrs	> 48-72 Hrs	> 72 Hrs	Total On Hand
CN	234	3	5	8	250
CP	109	100	3	43	255
SRY				3	3

Change in Last 24 Hours

	< 24 Hrs	24-48 Hrs	48 - 72 Hrs	> 72 Hrs
CN	99	-4	5	0
CP	-362	96	-24	7
SRY				0

Loaded Cars on Hand Vancouver Waiting for Placement - Last 30 Days All Railways



Port Terminal Status

Prince Rupert

Daily Activity for 9/16/2019

	Cars Arrived	Cars Received in Interchange	Cars Delivered in Interchange	Cars Placed for Unloading	Loads on Wheels at Destination As of 9/16/2019
CN	135			135	56

Port Unloads

	09/16	09/15	Week To Date	Last Week
CN	89	219	89	906

Age Profile of Loaded Cars Waiting Placement for Unloading

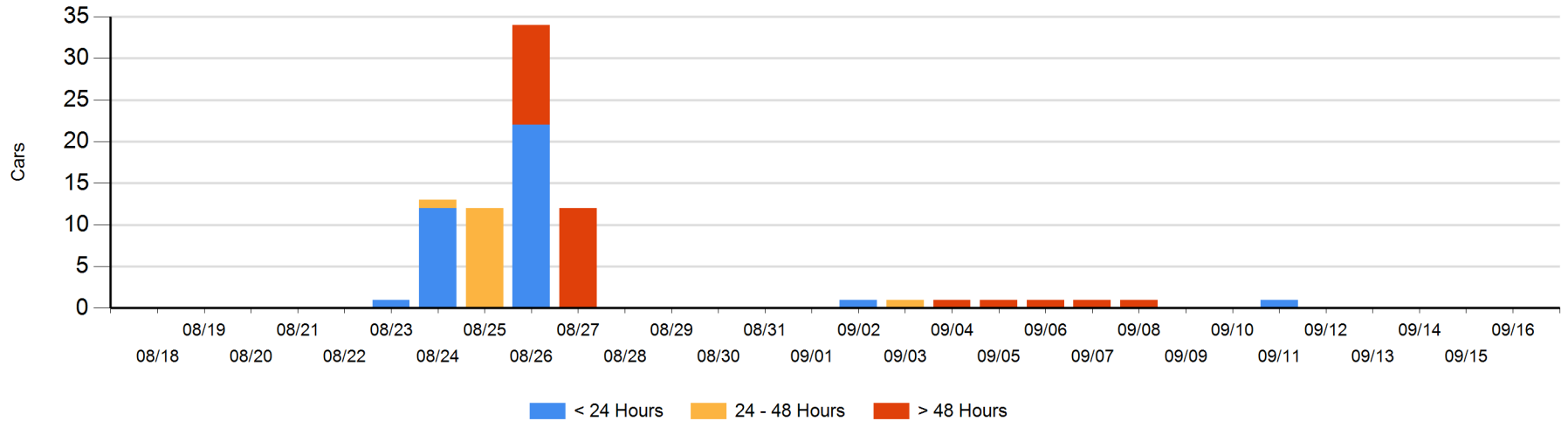
Today

	< 24 Hrs	24 - 48 Hrs	> 48-72 Hrs	> 72 Hrs	Total On Hand
CN					0

Change in Last 24 Hours

	< 24 Hrs	24-48 Hrs	48 - 72 Hrs	> 72 Hrs
CN				

Loaded Cars on Hand Prince Rupert Waiting for Placement - Last 30 Days All Railways



Port Terminal Status

Thunder Bay

Daily Activity for 9/16/2019

	Cars Arrived	Cars Received in Interchange	Cars Delivered in Interchange	Cars Placed for Unloading	Loads on Wheels at Destination As of 9/16/2019
CN	126			80	307
CP	502			158	581

Port Unloads

	09/16	09/15	Week To Date	Last Week
CN	109	17	109	475
CP	243	155	243	933

Age Profile of Loaded Cars Waiting Placement for Unloading

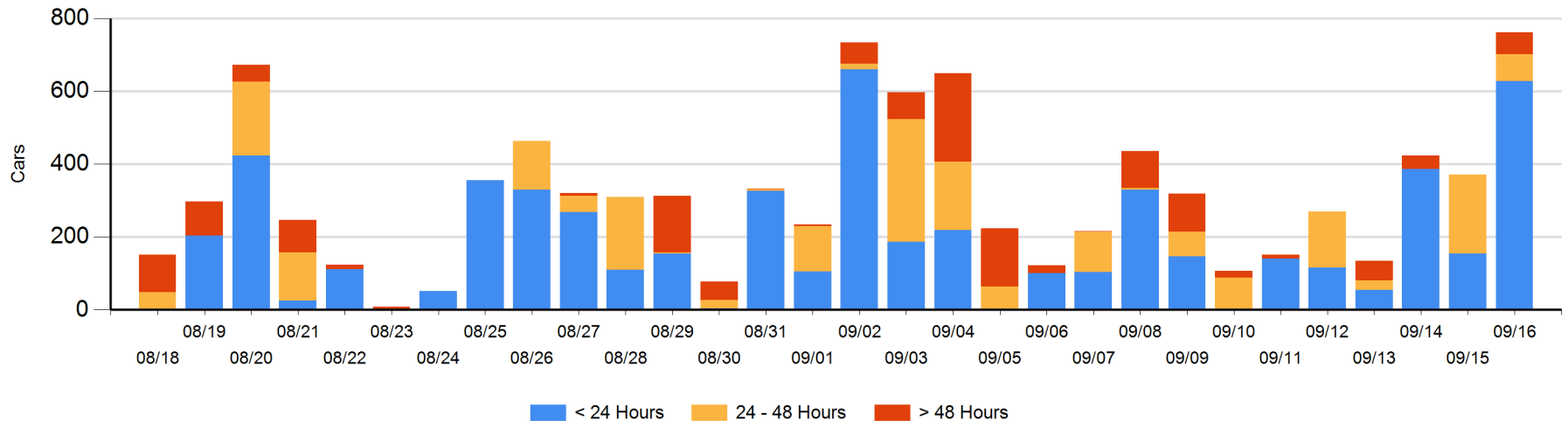
Today

	< 24 Hrs	24 - 48 Hrs	> 48-72 Hrs	> 72 Hrs	Total On Hand
CN	126	54			180
CP	502	20	59		581

Change in Last 24 Hours

	< 24 Hrs	24-48 Hrs	48 - 72 Hrs	> 72 Hrs
CN	-8	54		
CP	482	-197	59	

Loaded Cars on Hand Thunder Bay Waiting for Placement - Last 30 Days All Railways



Measurement Definitions

Loads on Wheels	<p>Count of loaded rail cars including all rail cars that have been released loaded at origin and have not been reported by the railway as unloaded at destination.</p> <p>Counts include all rail cars (hopper cars and boxcars) moving within a pipeline.</p>
Loads Not Moving	<p>Loaded rail cars for which the railways have not reported a movement event for 48 hours or more whether the rail car is at origin, enroute or at destination.</p>
Port Unloads	<p>Count of rail cars reported by railways as unloaded at the western port destinations of Vancouver, Prince Rupert and Thunder Bay.</p> <p>Unload counts include all rail cars (hopper cars and boxcars) unloaded by all receivers including major port terminals, transloaders and other receivers.</p>
Cars Arrived	<p>Count of rail cars reported as arrived at the destination railway terminal.</p>
Cars Received in Interchange	<p>Count of rail cars received in interchange by each railway within a destination railway terminal. Interchange activity is tracked for the Vancouver and Thunder Bay pipelines as applicable.</p>
Cars Delivered in Interchange	<p>Count of rail cars delivered in interchange by each railway within a destination railway terminal. Interchange activity is tracked for the Vancouver and Thunder Bay pipelines as applicable.</p>
Cars Placed for Unloading	<p>Count of rail cars reported by the railways as placed loaded at the receiver's facility for unloading.</p>
Loads on Wheels at Destination	<p>Count of rail cars that remain under load within the destination railway terminal including rail cars that have been reported as placed for unloading but not yet reported as unloaded.</p>
Waiting Placement for Unloading	<p>Count of rail cars that have been reported as arrived at the destination railway terminal but not reported as placed for unloading by the railway.</p> <p>For the Ports of Vancouver, Prince Rupert and Thunder Bay the count of rail cars waiting placement for unloading is categorized by age – i.e. the elapsed time from arrival at destination to the current report date.</p>