

## SPEED READ

- Loads on wheels decreased overnight, reflecting a decline in both CN and CP volumes. On a net basis, volumes decreased due to lower volumes across all corridors other than Vancouver.
- Network fluidity improved overnight, led by a decline in idle car counts on both CN and CP by 33% (-149) and 48% (-240), respectively. The total count of cars for 4+ days on both railways increased 14% (+39) overnight - now at 313 cars.
- Two days in Week 7 unloads now behind prior week's performance by more than 150 unloads, reflecting reduced unloads at Vancouver and Prince Rupert offset by improved week over week performance at Thunder Bay.

---

## Loads on Wheels

- Loads on wheels decreased 2% (-134) overnight and have now decreased for the third consecutive day, due to lower volumes on both CN and CP - combined total at 6,420 and 4% below the trailing 30-day average.
- On a net basis, the decline in loads on wheels indicates lower volumes across all corridors other than Vancouver.
- CN volumes declined marginally by 1% (-21) overnight and have now decreased for the fourth consecutive day, with lower volumes in the Prince Rupert, E. Canada and USA/MEX corridors offset by higher traffic in the Thunder Bay and Vancouver corridors. System wide CN loads on wheels presently at 3,027 and 5% below the trailing 30-day average.
- CP volumes declined 3% (-103) overnight, driven by a decline in volumes across all corridors other than Vancouver. CP system wide loads on wheels presently at 3,201 and 4% below the trailing 30-day average.
- Vancouver now at 4,149, increased 5% (+210) overnight, now 7% above the trailing 30-day average.
- The Prince Rupert pipeline now at 415, declined 19% (-95) overnight, and 51% below the trailing 30-day average.
- Thunder Bay volumes declined 16% (-175) overnight and have now decreased for the third consecutive day - currently at 932 and 13% below the trailing 30-day average, with 56% of traffic moving on CP.

## Hopper Car Rationing

- No hopper cars were rationed by either CN or CP in week 5.

## Loads Not Moving

- **The count of cars not moving for 48+ hours declined 41% (-389) overnight, marking lower counts on both CN and CP. Idle car counts presently at 554 and 19% below the trailing 30-day average.**
- CN
  - **The count of idle cars for 48+ hours declined 33% (-149) overnight - now at 297 cars.**
  - The number of cars idle for 4+ days increased 31% (+44) overnight - currently at 188 cars.
  - The count of cars not moving for 7+ days increased marginally by 1% (+1) overnight and have now increased for the seventh consecutive day - currently at 68 cars.
  - Vancouver represents 39% of all idle cars.
  - In total 50% of all idle cars are dwelling at origin locations.
- CP
  - **CP idle car counts for 48+ hours decreased significantly by 48% (-240) overnight - currently at 257 cars.**

- The number of cars idle for 4+ days declined 4% (-5) overnight - now at 125 cars.
- The number of cars idle for 7+ days increased 185% (+50) overnight - presently at 77 cars.
- Vancouver accounts for 76% of all idle cars.
- In total 58% of all idle cars are dwelling at origin locations.

### **Port Performance**

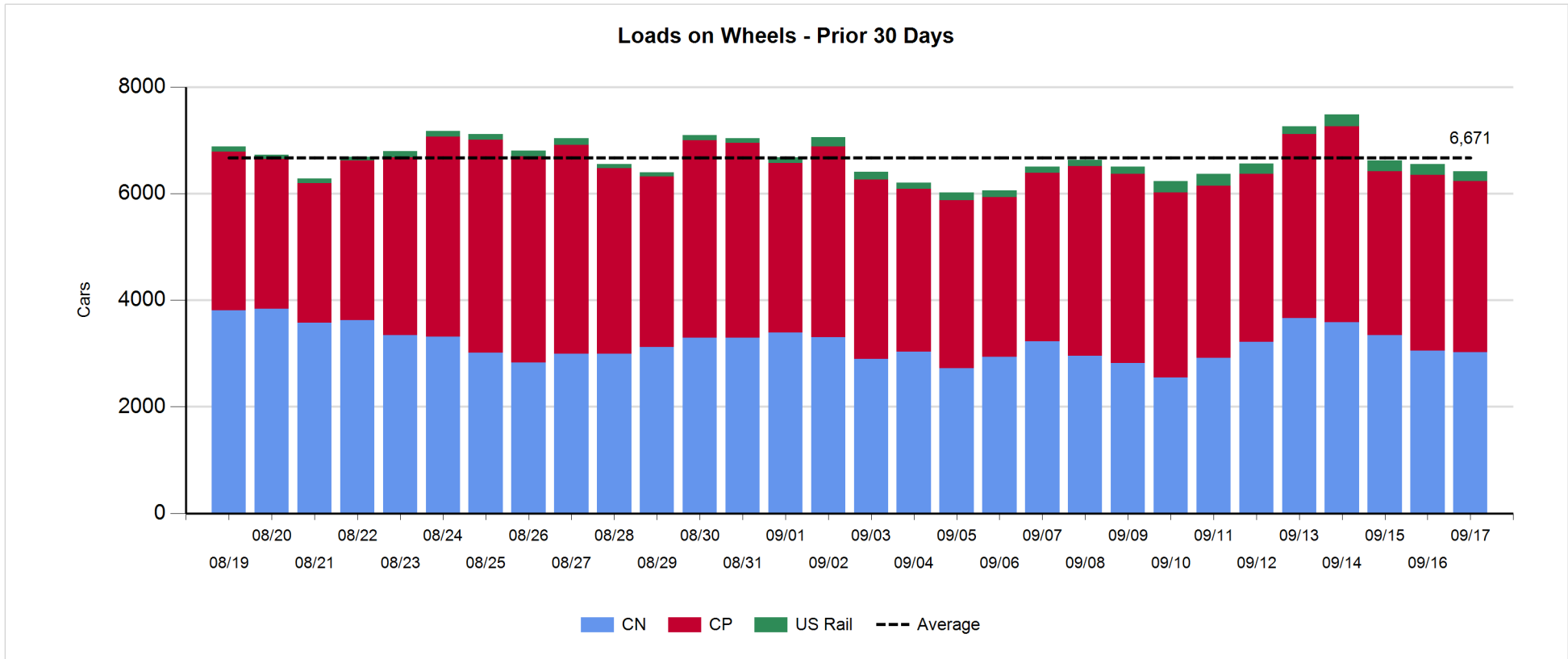
- CN and CP reported a total of 907 cars unloaded at the three major ports, now 6% below the trailing 30-day average. Two days in Week 7 unloads now behind last week's pace by more than 150 unloads, reflecting reduced unloads at Vancouver and Prince Rupert offset by higher unloads at Thunder Bay.
- Vancouver
  - 453 unloads reported by CN and CP at the Port of Vancouver; CN - 68 and CP - 385. Two days in Week 7 unloads are tracking behind last week's performance by fewer than 200 unloads.
  - There are more than 650 cars on site at Vancouver with 450 cars arriving at the port in the last 24 hours.
  - CN and CP have more than 1,400 cars in British Columbia en route to Vancouver, with 1,050 cars at Kamloops and west, and 51% of traffic moving on CP.
- Prince Rupert
  - Prince Rupert reported 123 unloads, now behind last week's unloads after two days by about 100 unloads.
  - Loads on wheels remain below 1,000 cars - currently at 415 cars.
  - There are 50 cars west of Jasper en route to Prince Rupert.
  - There is 1 car on site at Prince Rupert with more than 50 cars arriving at the port in the last 24 hours.
- Thunder Bay
  - 331 unloads were reported at Thunder Bay yesterday. Two days in Week 7 unloads are tracking ahead of last week's pace by 100 unloads.
  - There are 550 cars on site at Thunder Bay with zero cars arriving at the port in the prior 24 hours.
  - There are more than 100 cars en route to Thunder Bay from Winnipeg and east.

**Daily Loads on Wheels - 9/17/2019**

	E Canada	Prince Rupert	Thunder Bay	USA/MEX	Vancouver	Total
CN	209	415	406	169	1,828	3,027
CP	137		526	222	2,316	3,201
Short Line	2				5	7
US Rail				185		185
	348	415	932	576	4,149	6,420

**Change in Loads on Wheels - Prior 24 Hours**

	E Canada	Prince Rupert	Thunder Bay	USA/MEX	Vancouver	Total
CN	-28	-95	99	-25	28	-21
CP	-1		-274	-27	199	-103
Short Line	-3				-17	-20
US Rail				10		10
	-32	-95	-175	-42	210	-134

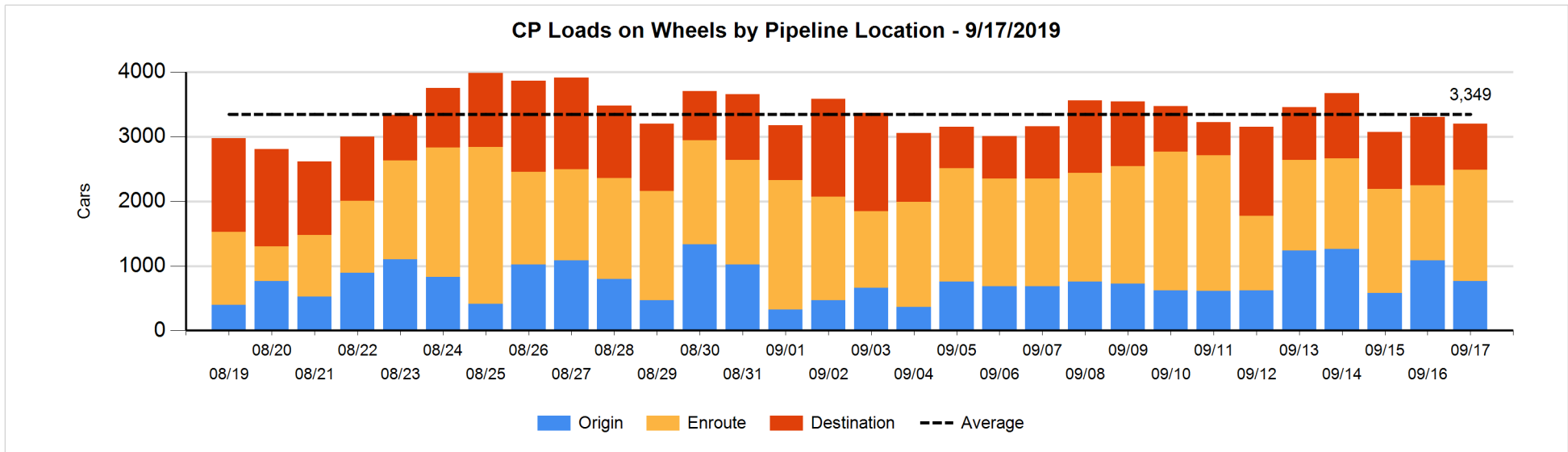
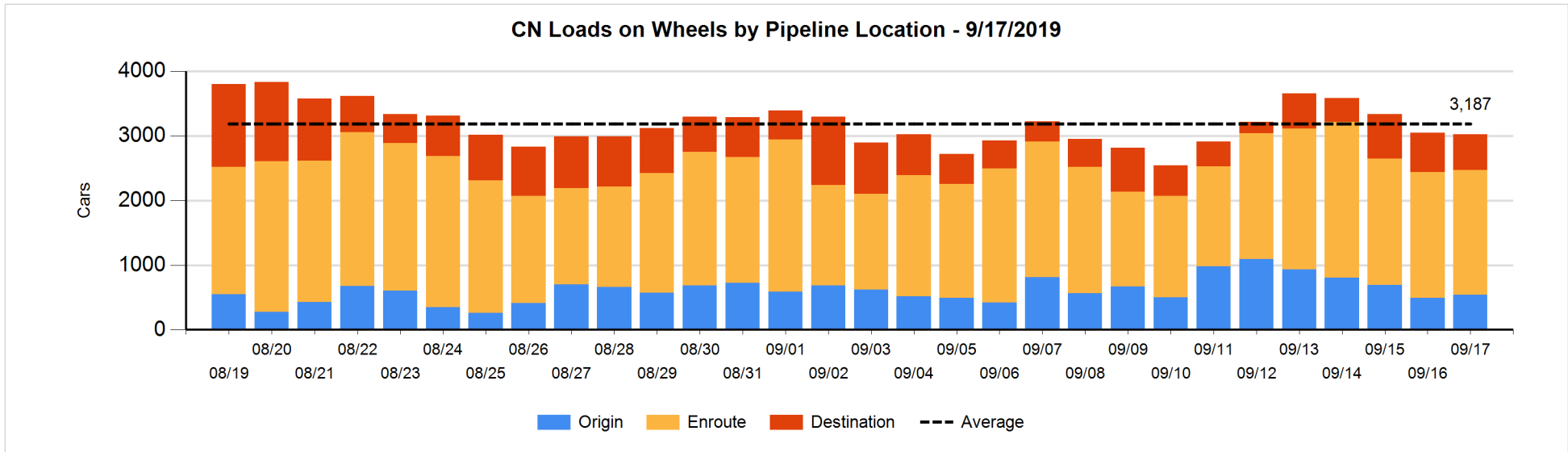


**Daily Loads on Wheels By Pipeline Location - 9/17/2019**

	E Canada	Prince Rupert	Thunder Bay	USA/MEX	Vancouver	Total
CN						
Origin	3	50		77	407	537
Enroute	187	364	100	70	1,213	1,934
Destination	19	1	306	22	208	556
	209	415	406	169	1,828	3,027
CP						
Origin	1		56	1	707	765
Enroute	132		219	221	1,147	1,719
Destination	4		251		462	717
	137		526	222	2,316	3,201
US Rail / Short Line						
Origin						
Enroute	1			98		99
Destination	1			87	5	93
	2			185	5	192

**Change in Daily Loads on Wheels By Pipeline Location - Prior 24 Hours**

	E Canada	Prince Rupert	Thunder Bay	USA/MEX	Vancouver	Total
CN						
Origin	0	-76		-25	148	47
Enroute	-24	36	100	5	-131	-14
Destination	-4	-55	-1	-5	11	-54
	-28	-95	99	-25	28	-21
CP						
Origin	-45		-153	-5	-118	-321
Enroute	41		209	-22	327	555
Destination	3		-330		-10	-337
	-1		-274	-27	199	-103
US Rail / Short Line						
Origin						
Enroute	-3			42		39
Destination	0			-32	-17	-49
	-3			10	-17	-10

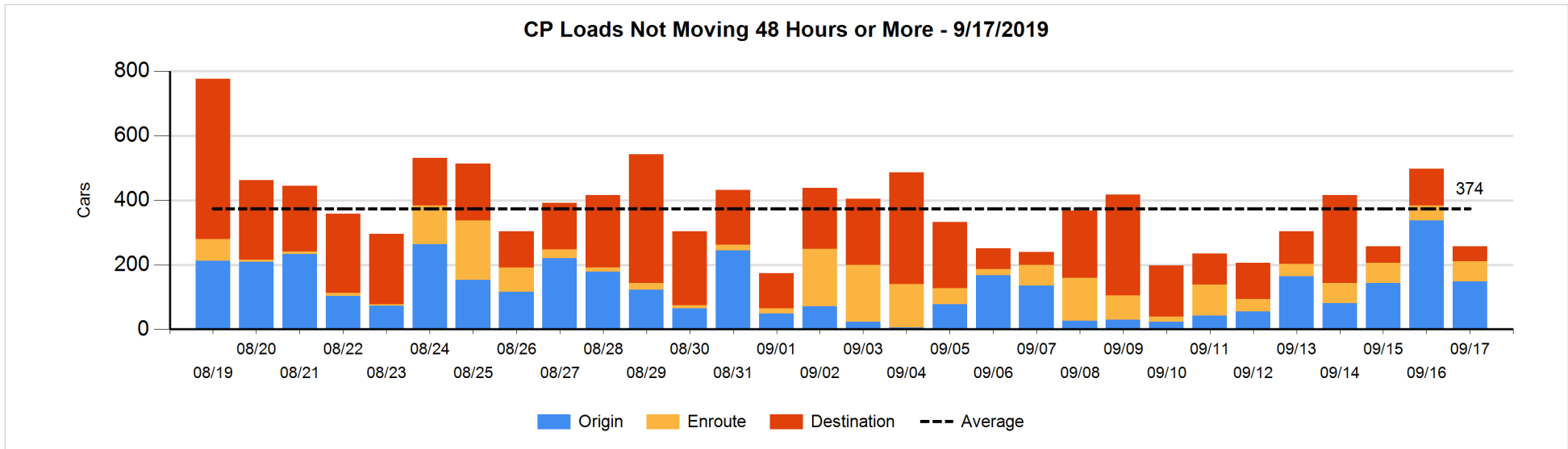
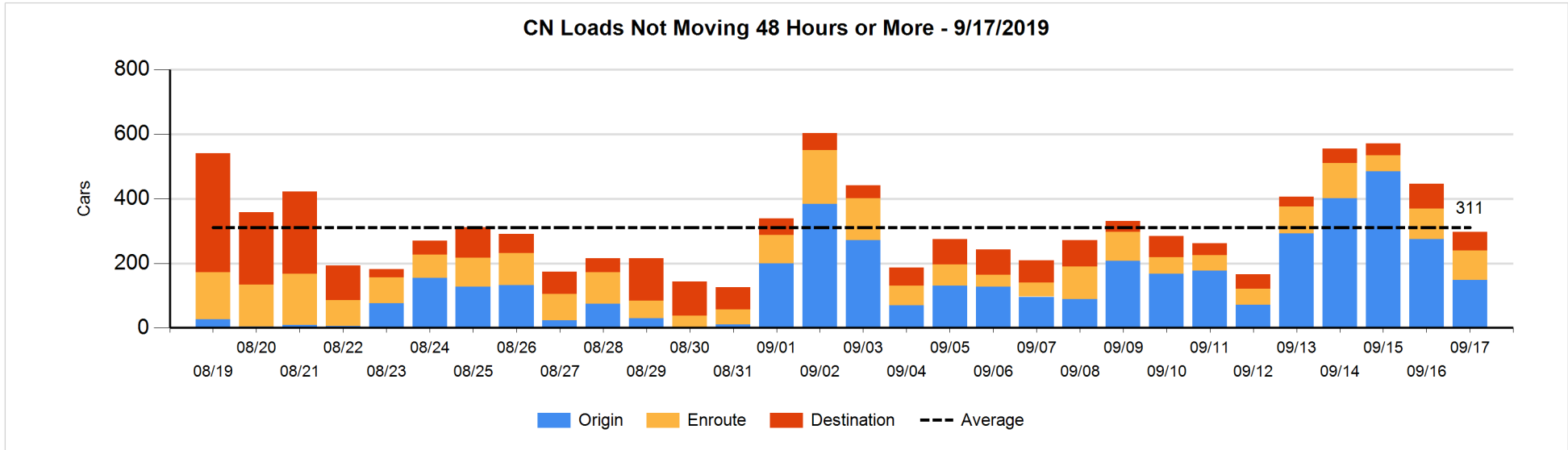


**Loads Not Moving 48 Hours or More - 9/17/2019**

	E Canada	Prince Rupert	Thunder Bay	USA/MEX	Vancouver	Total
<b>CN</b>						
Origin		22		24	102	148
Enroute	65	11		2	13	91
Destination	5	1	46	5	1	58
	70	34	46	31	116	297
<b>CP</b>						
Origin	1				147	148
Enroute	6		1	32	23	62
Destination	1		20		26	47
	8		21	32	196	257
<b>US Rail / Short Line</b>						
Origin						
Enroute				12		12
Destination	1			55	4	60
	1			67	4	72

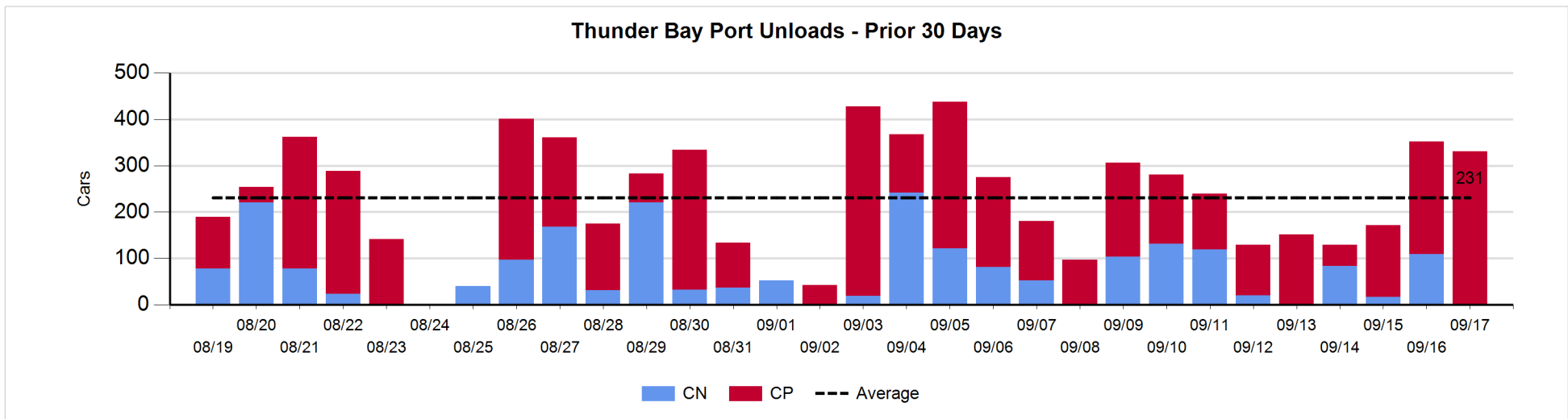
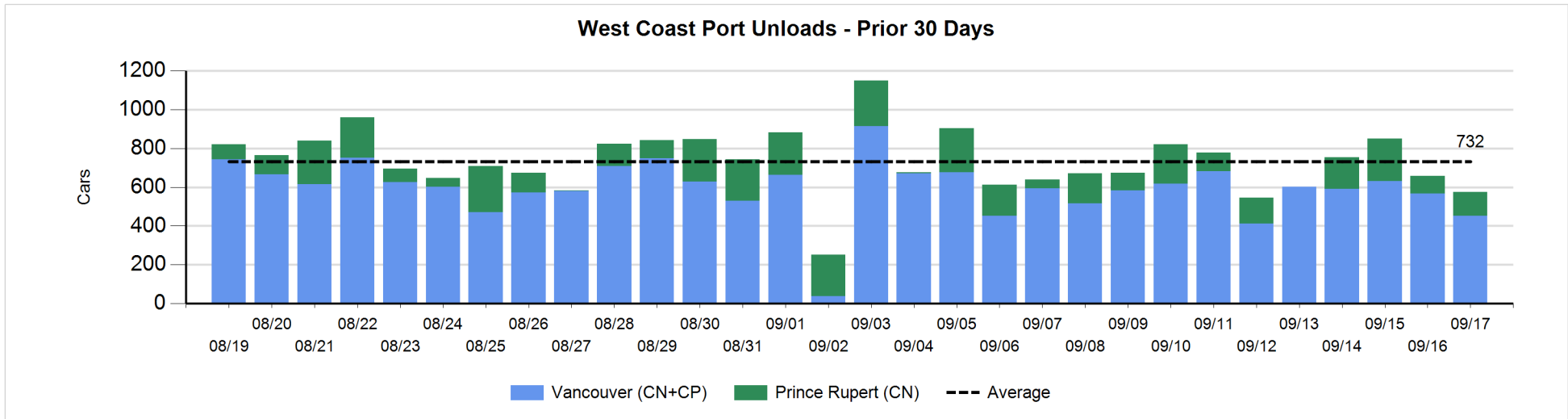
**Change in Loads Not Moving 48 Hours or More - 9/17/2019**

	E Canada	Prince Rupert	Thunder Bay	USA/MEX	Vancouver	Total
<b>CN</b>						
Origin		0		-23	-103	-126
Enroute	2	-1		0	-6	-5
Destination	1	0	-1	-9	-9	-18
	3	-1	-1	-32	-118	-149
<b>CP</b>						
Origin	-39			-6	-144	-189
Enroute	-1		1	0	16	16
Destination	0		-24		-43	-67
	-40		-23	-6	-171	-240
<b>US Rail / Short Line</b>						
Origin						
Enroute				0		0
Destination	0			-9	-2	-11
	0			-9	-2	-11



**Port Unloads - 9/17/2019**

	Prince Rupert	Vancouver	West Coast Total	Thunder Bay	Total
CN	123	68	191	1	192
CP		385	385	330	715
	123	453	576	331	907





**Port Terminal Status**

**Vancouver**

Daily Activity for 9/17/2019

	Cars Arrived	Cars Received in Interchange	Cars Delivered in Interchange	Cars Placed for Unloading	Loads on Wheels at Destination As of 9/17/2019
CN	174	1	223	11	208
CP	266	223	1	326	462
SRY				2	5

**Port Unloads**

	09/17	09/16	Week To Date	Last Week
CN	68	155	223	1,446
CP	385	413	798	2,673
SRY	4	8	12	51

**Age Profile of Loaded Cars Waiting Placement for Unloading**

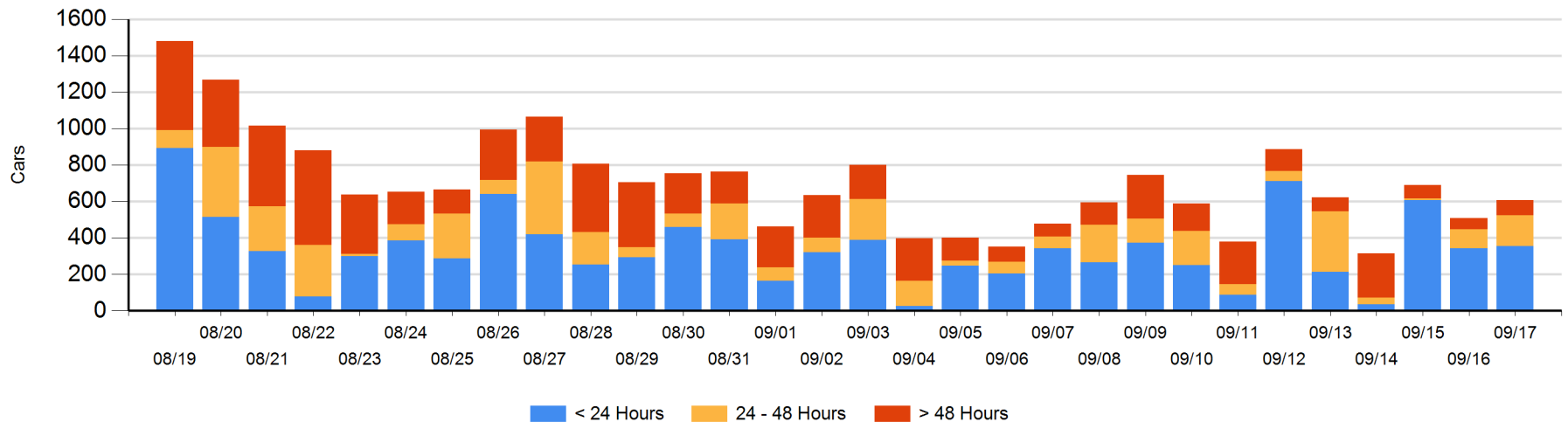
**Today**

	< 24 Hrs	24 - 48 Hrs	> 48-72 Hrs	> 72 Hrs	Total On Hand
CN	174	133		9	316
CP	182	35	33	39	289
SRY				3	3

**Change in Last 24 Hours**

	< 24 Hrs	24-48 Hrs	48 - 72 Hrs	> 72 Hrs
CN	-60	130	-5	1
CP	73	-65	30	-4
SRY				0

**Loaded Cars on Hand Vancouver Waiting for Placement - Last 30 Days All Railways**



**Port Terminal Status**

**Prince Rupert**

Daily Activity for 9/17/2019

	Cars Arrived	Cars Received in Interchange	Cars Delivered in Interchange	Cars Placed for Unloading	Loads on Wheels at Destination As of 9/17/2019
CN	68			68	1

**Port Unloads**

	09/17	09/16	Week To Date	Last Week
CN	123	89	212	906

**Age Profile of Loaded Cars Waiting Placement for Unloading**

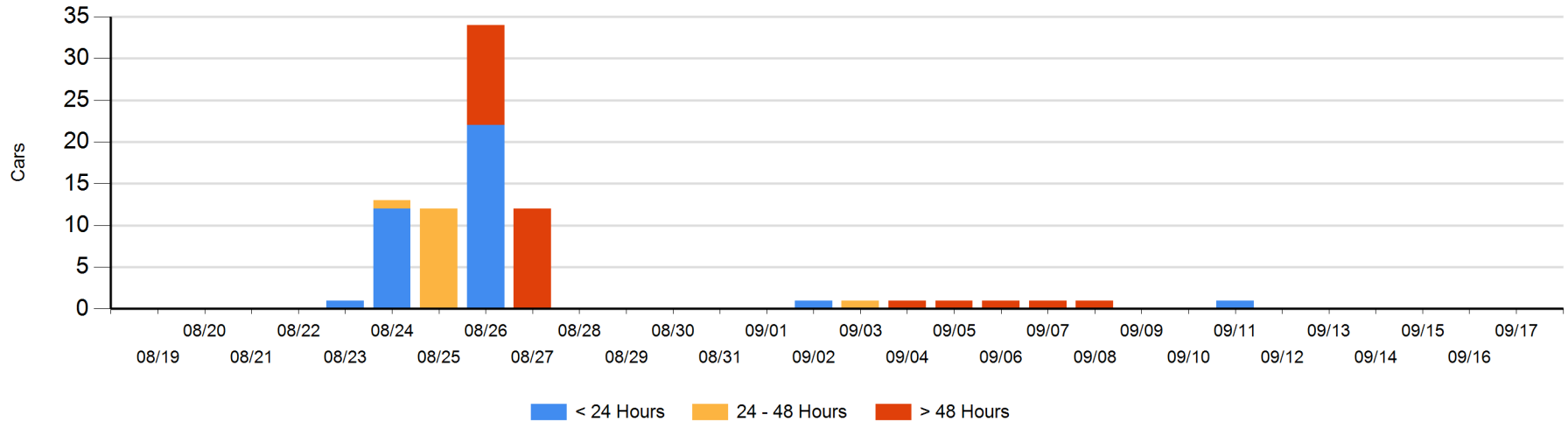
**Today**

	< 24 Hrs	24 - 48 Hrs	> 48-72 Hrs	> 72 Hrs	Total On Hand
CN					0

**Change in Last 24 Hours**

	< 24 Hrs	24-48 Hrs	48 - 72 Hrs	> 72 Hrs
CN				

Loaded Cars on Hand Prince Rupert Waiting for Placement - Last 30 Days All Railways



**Port Terminal Status**

**Thunder Bay**

Daily Activity for 9/17/2019

	Cars Arrived	Cars Received in Interchange	Cars Delivered in Interchange	Cars Placed for Unloading	Loads on Wheels at Destination As of 9/17/2019
CN				96	306
CP				343	251

**Port Unloads**

	09/17	09/16	Week To Date	Last Week
CN	1	109	110	475
CP	330	243	573	933

**Age Profile of Loaded Cars Waiting Placement for Unloading**

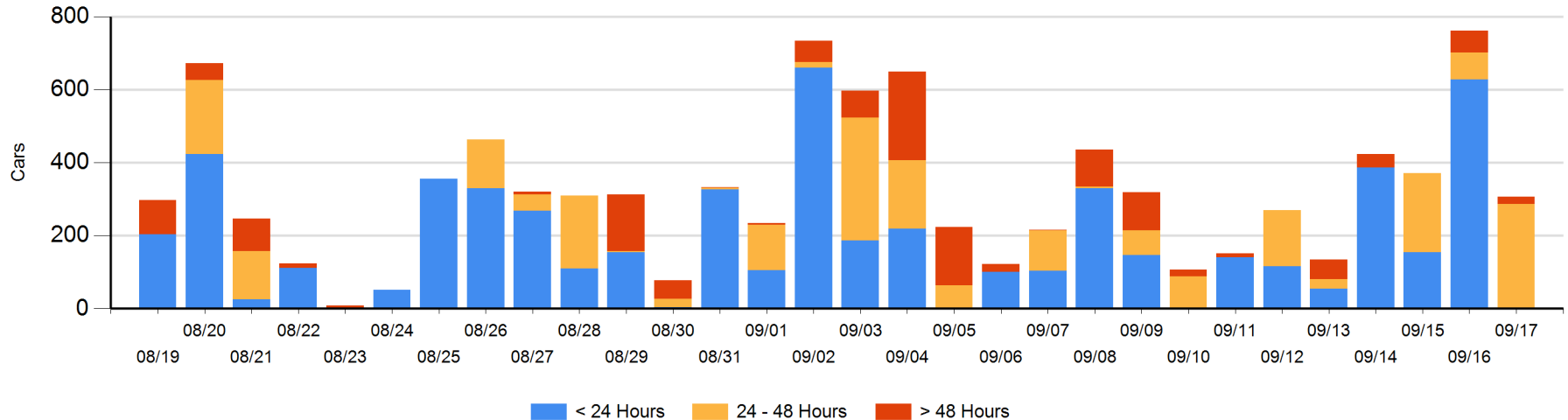
**Today**

	< 24 Hrs	24 - 48 Hrs	> 48-72 Hrs	> 72 Hrs	Total On Hand
CN		84			84
CP		203	20		223

**Change in Last 24 Hours**

	< 24 Hrs	24-48 Hrs	48 - 72 Hrs	> 72 Hrs
CN	-126	30		
CP	-502	183	-39	

**Loaded Cars on Hand Thunder Bay Waiting for Placement - Last 30 Days All Railways**



## Measurement Definitions

Loads on Wheels	<p>Count of loaded rail cars including all rail cars that have been released loaded at origin and have not been reported by the railway as unloaded at destination.</p> <p>Counts include all rail cars (hopper cars and boxcars) moving within a pipeline.</p>
Loads Not Moving	<p>Loaded rail cars for which the railways have not reported a movement event for 48 hours or more whether the rail car is at origin, enroute or at destination.</p>
Port Unloads	<p>Count of rail cars reported by railways as unloaded at the western port destinations of Vancouver, Prince Rupert and Thunder Bay.</p> <p>Unload counts include all rail cars (hopper cars and boxcars) unloaded by all receivers including major port terminals, transloaders and other receivers.</p>
Cars Arrived	<p>Count of rail cars reported as arrived at the destination railway terminal.</p>
Cars Received in Interchange	<p>Count of rail cars received in interchange by each railway within a destination railway terminal. Interchange activity is tracked for the Vancouver and Thunder Bay pipelines as applicable.</p>
Cars Delivered in Interchange	<p>Count of rail cars delivered in interchange by each railway within a destination railway terminal. Interchange activity is tracked for the Vancouver and Thunder Bay pipelines as applicable.</p>
Cars Placed for Unloading	<p>Count of rail cars reported by the railways as placed loaded at the receiver's facility for unloading.</p>
Loads on Wheels at Destination	<p>Count of rail cars that remain under load within the destination railway terminal including rail cars that have been reported as placed for unloading but not yet reported as unloaded.</p>
Waiting Placement for Unloading	<p>Count of rail cars that have been reported as arrived at the destination railway terminal but not reported as placed for unloading by the railway.</p> <p>For the Ports of Vancouver, Prince Rupert and Thunder Bay the count of rail cars waiting placement for unloading is categorized by age – i.e. the elapsed time from arrival at destination to the current report date.</p>