

SPEED READ

- Loads on wheels rose significantly overnight, marking a rise in both CN and CP volumes. On a net basis, volumes rose due to higher volumes across all corridors other than USA/MEX.
- Network fluidity deteriorated overnight, led by a rise in idle car counts on CP by 121% (+310) offset by a decline in idle car counts on CN by 3% (-10). The total count of cars for 4+ days on both railways rose 17% (+52) overnight - presently at 367 cars.
- Three days in Week 7 unloads now behind prior week's performance by nearly 450 unloads, reflecting lower unloads at Vancouver and Prince Rupert offset by improved week over week performance at Thunder Bay.

=====

Loads on Wheels

- Loads on wheels rose significantly by 11% (+706) overnight, due to higher volumes on both CN and CP - combined total at 7,131 and 7% above the trailing 30-day average.
- On a net basis, the increase in loads on wheels indicates higher volumes across all corridors other than USA/MEX.
- CN volumes increased 6% (+185) overnight, with higher traffic in the Prince Rupert, E. Canada and USA/MEX corridors offset by lower volumes in the Vancouver and Thunder Bay corridors. System wide CN loads on wheels presently at 3,229 and 2% above the trailing 30-day average.
- CP volumes increased significantly by 17% (+553) overnight, driven by a rise in traffic in the Vancouver and Thunder Bay corridors offset by a decline in traffic in the USA/MEX and E. Canada corridors. CP system wide loads on wheels presently at 3,742 and 11% above the trailing 30-day average.
- Vancouver now at 4,342, rose for the third consecutive day, up 5% (+189) overnight, now 12% above the trailing 30-day average.
- The Prince Rupert pipeline presently at 667, increased 61% (+252) overnight, and 21% below the trailing 30-day average.
- Thunder Bay volumes increased 28% (+258) overnight - presently at 1,190 and 11% above the trailing 30-day average, with 68% of traffic moving on CP.

Hopper Car Rationing

- No hopper cars were rationed by either CN or CP in week 5.

Loads Not Moving

- **The count of cars not moving for 48+ hours rose significantly by 54% (+300) overnight, reflecting higher counts on CP offset by reduced counts on CN. Idle car counts presently at 856 and 28% above the trailing 30-day average.**
- CN
 - **The count of idle cars for 48+ hours decreased for the third consecutive day, down 3% (-10) overnight - currently at 289 cars.**
 - The number of cars idle for 4+ days increased 6% (+12) overnight - presently at 202 cars.
 - The count of cars not moving for 7+ days increased 9% (+6) overnight and have now increased for the eighth consecutive day - presently at 75 cars.
 - Vancouver represents 24% of all idle cars.
 - In total 44% of all idle cars are dwelling at origin locations.
- CP
 - **CP idle car counts for 48+ hours rose significantly by 121% (+310) overnight - now at 567 cars, the highest seen in the last 30 days.**
 - The number of cars idle for 4+ days increased 32% (+40) overnight - currently at 165 cars.
 - The number of cars idle for 7+ days declined 43% (-33) overnight - presently at 44 cars.
 - Vancouver accounts for 69% of all idle cars.

- In total 61% of all idle cars are dwelling at origin locations.

Port Performance

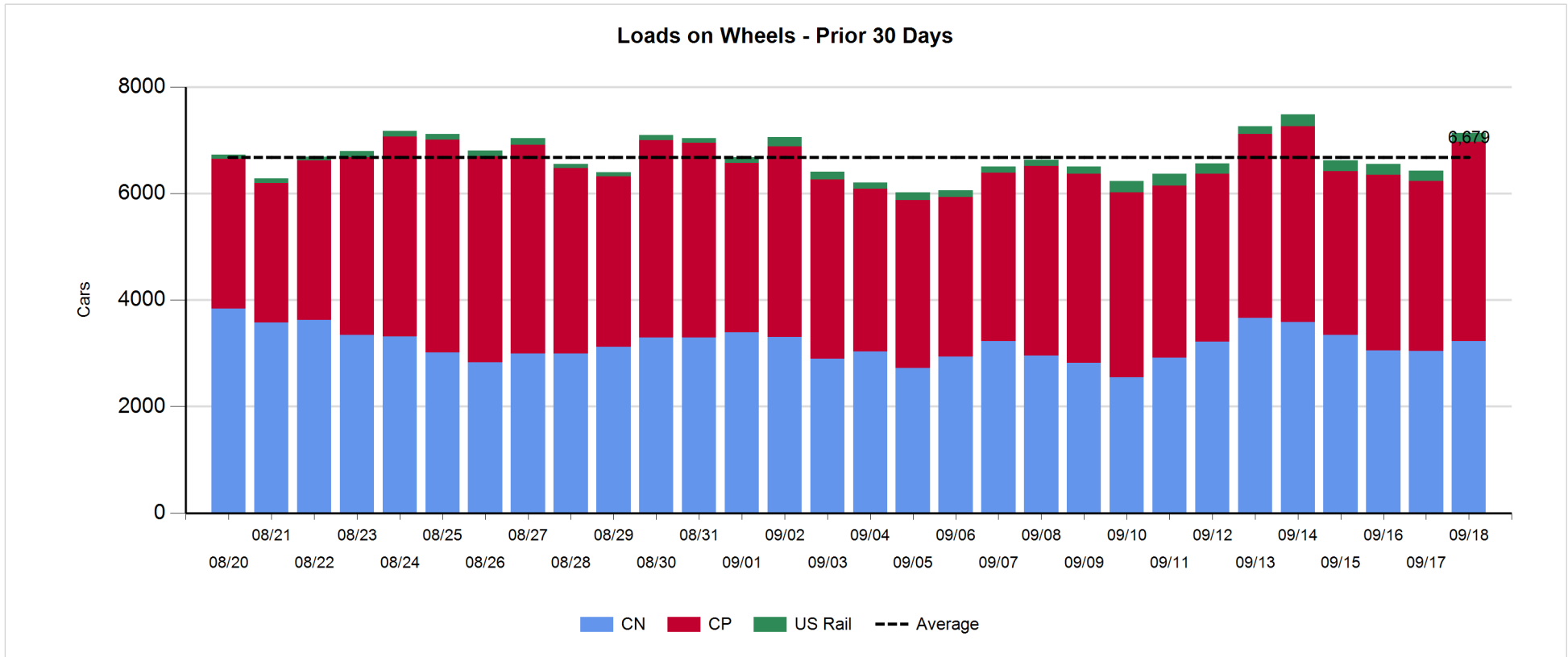
- CN and CP reported a total of 763 cars unloaded at the three major ports, now 20% below the trailing 30-day average. Three days in Week 7 unloads now behind last week's pace by nearly 450 unloads, reflecting lower unloads at Vancouver and Prince Rupert offset by higher unloads at Thunder Bay.
- Vancouver
 - 536 unloads reported by CN and CP at the Port of Vancouver; CN - 69 and CP - 467. Three days in Week 7 unloads are tracking behind last week's performance by 350 unloads.
 - There are 1,250 cars on site at Vancouver with 1,100 cars arriving at the port in the last 24 hours.
 - CN and CP have 800 cars in British Columbia en route to Vancouver, with more than 550 cars at Kamloops and west, and 83% of traffic moving on CN.
- Prince Rupert
 - Prince Rupert reported zero unloads, now behind last week's unloads after three days by more than 150 unloads.
 - Loads on wheels remain below 1,000 cars - presently at 667 cars.
 - There are 50 cars west of Jasper en route to Prince Rupert.
 - There are 1 cars on site at Prince Rupert with zero cars arriving at the port in the last 24 hours.
- Thunder Bay
 - 227 unloads were reported at Thunder Bay yesterday. Three days in Week 7 unloads are tracking ahead of last week's pace by nearly 100 unloads.
 - There are fewer than 450 cars on site at Thunder Bay with 100 cars arriving at the port in the prior 24 hours.
 - There are 50 cars en route to Thunder Bay from Winnipeg and east.

Daily Loads on Wheels - 9/18/2019

	E Canada	Prince Rupert	Thunder Bay	USA/MEX	Vancouver	Total
CN	271	667	385	185	1,721	3,229
CP	125		805	196	2,616	3,742
Short Line	2				5	7
US Rail				153		153
	398	667	1,190	534	4,342	7,131

Change in Loads on Wheels - Prior 24 Hours

	E Canada	Prince Rupert	Thunder Bay	USA/MEX	Vancouver	Total
CN	62	252	-34	16	-111	185
CP	-12		292	-27	300	553
Short Line	0				0	0
US Rail				-32		-32
	50	252	258	-43	189	706

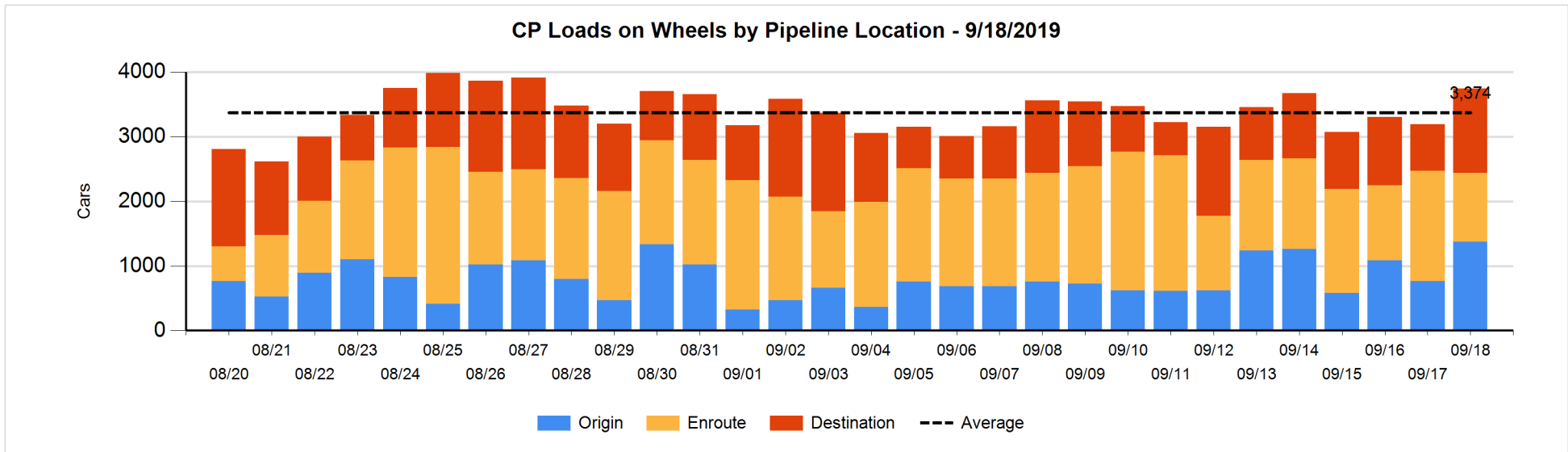
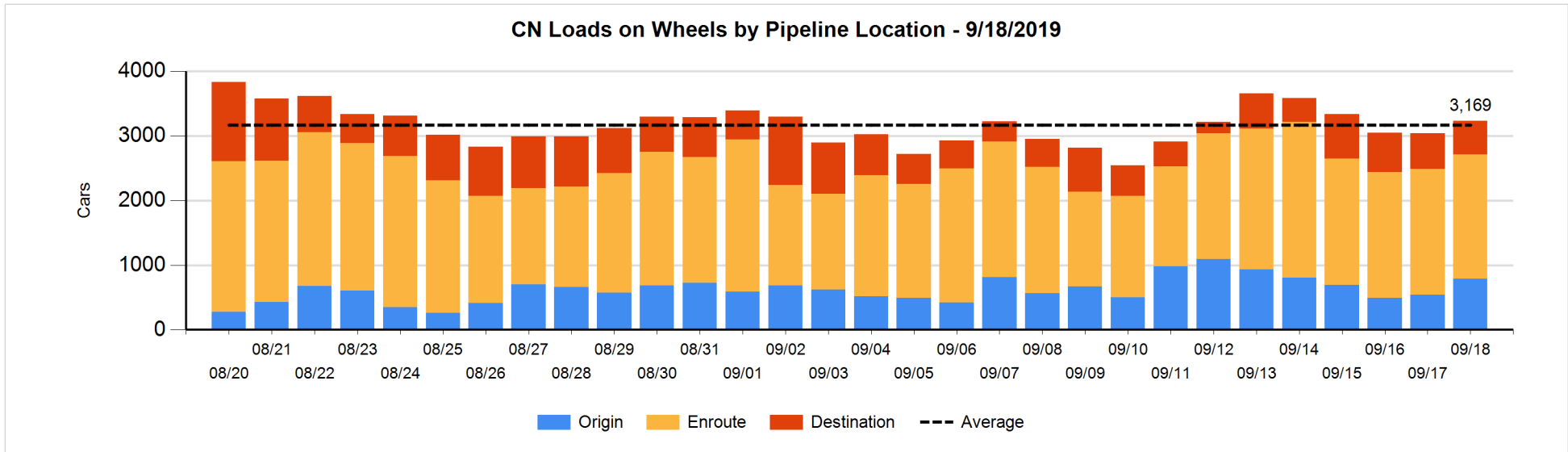


Daily Loads on Wheels By Pipeline Location - 9/18/2019

	E Canada	Prince Rupert	Thunder Bay	USA/MEX	Vancouver	Total
CN						
Origin	79	302	1	117	293	792
Enroute	158	364	170	47	1,184	1,923
Destination	34	1	214	21	244	514
	271	667	385	185	1,721	3,229
CP						
Origin	4		384	53	929	1,370
Enroute	58		196	118	695	1,067
Destination	63		225	25	992	1,305
	125		805	196	2,616	3,742
US Rail / Short Line						
Origin						
Enroute	1			40		41
Destination	1			113	5	119
	2			153	5	160

Change in Daily Loads on Wheels By Pipeline Location - Prior 24 Hours

	E Canada	Prince Rupert	Thunder Bay	USA/MEX	Vancouver	Total
CN						
Origin	76	252	1	40	-114	255
Enroute	-29	0	57	-23	-33	-28
Destination	15	0	-92	-1	36	-42
	62	252	-34	16	-111	185
CP						
Origin	3		328	52	222	605
Enroute	-74		-10	-104	-452	-640
Destination	59		-26	25	530	588
	-12		292	-27	300	553
US Rail / Short Line						
Origin						
Enroute	0			-58		-58
Destination	0			26	0	26
	0			-32	0	-32

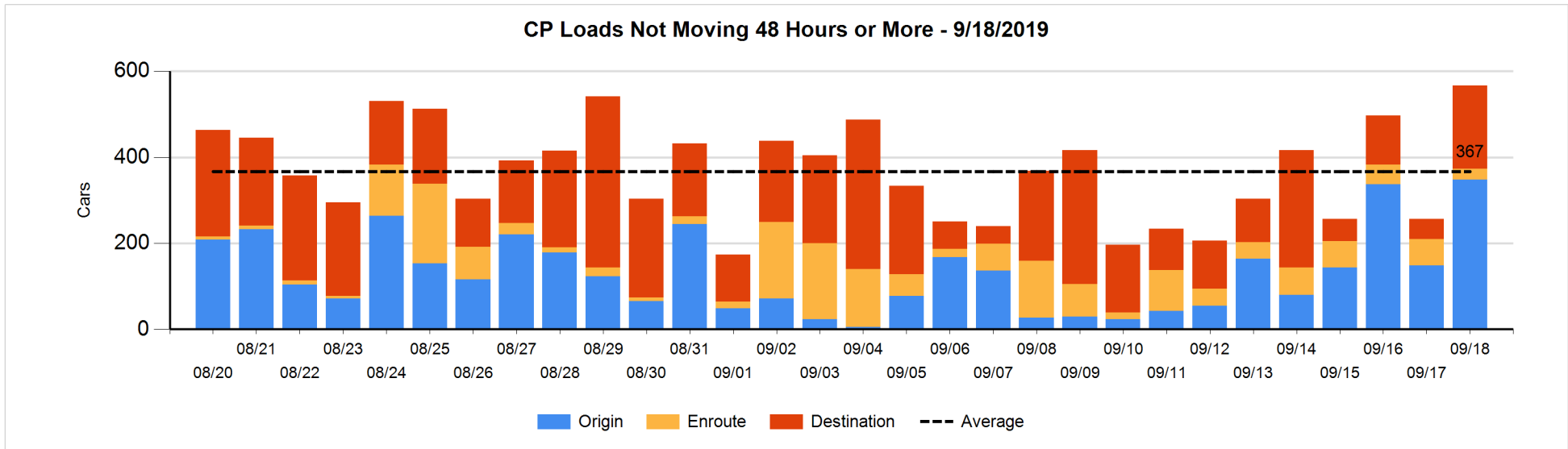
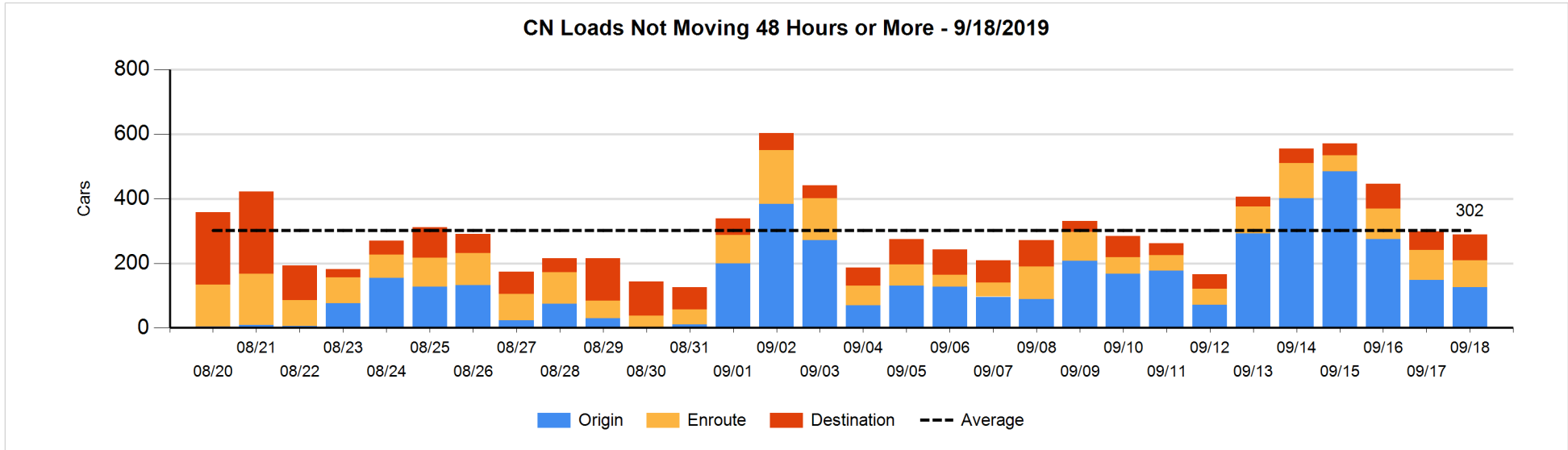


Loads Not Moving 48 Hours or More - 9/18/2019

	E Canada	Prince Rupert	Thunder Bay	USA/MEX	Vancouver	Total
CN						
Origin	3			74	49	126
Enroute	54	12		2	15	83
Destination	2	1	58	14	5	80
	59	13	58	90	69	289
CP						
Origin	1				347	348
Enroute	7			8	10	25
Destination	1		160		33	194
	9		160	8	390	567
US Rail / Short Line						
Origin						
Enroute				13		13
Destination	1			44	4	49
	1			57	4	62

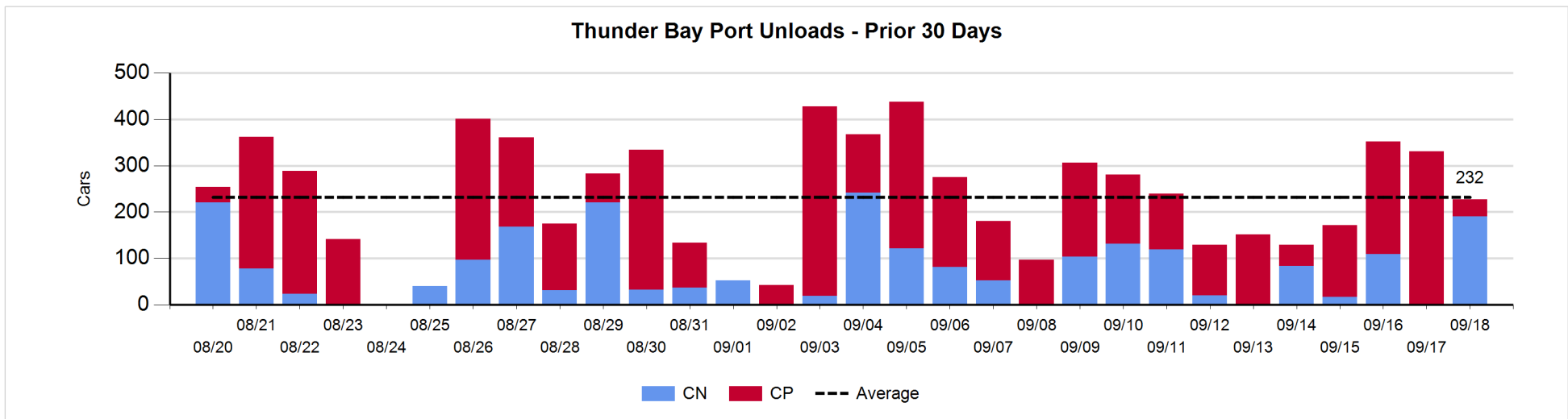
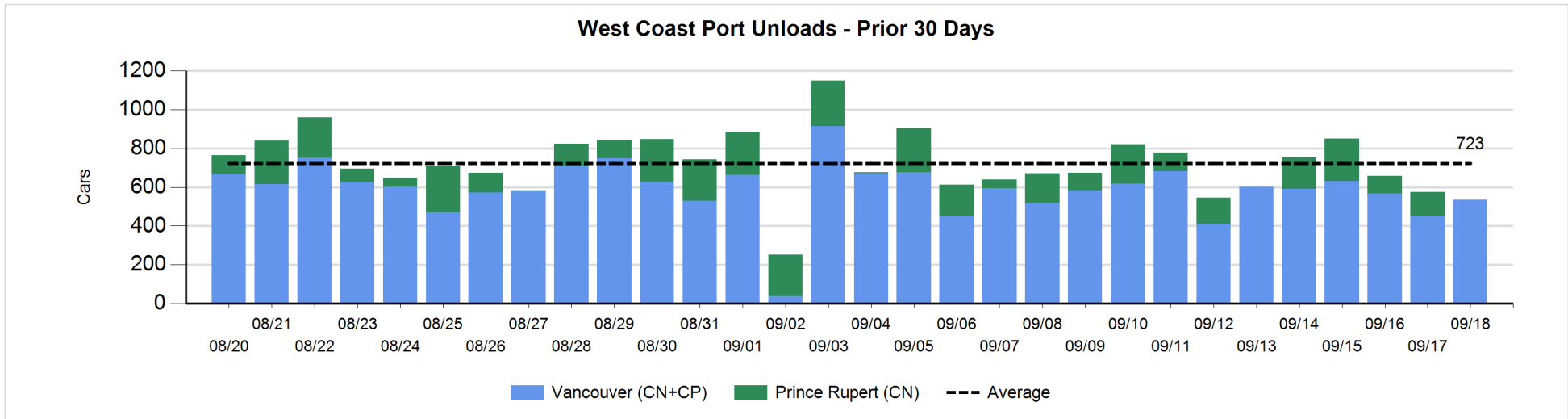
Change in Loads Not Moving 48 Hours or More - 9/18/2019

	E Canada	Prince Rupert	Thunder Bay	USA/MEX	Vancouver	Total
CN						
Origin	3	-22		50	-53	-22
Enroute	-11	1		0	0	-10
Destination	-3	0	12	9	4	22
	-11	-21	12	59	-49	-10
CP						
Origin	0				200	200
Enroute	1		-1	-24	-13	-37
Destination	0		140		7	147
	1		139	-24	194	310
US Rail / Short Line						
Origin						
Enroute				1		1
Destination	0			-11	0	-11
	0			-10	0	-10



Port Unloads - 9/18/2019

	Prince Rupert	Vancouver	West Coast Total	Thunder Bay	Total
CN		69	69	191	260
CP		467	467	36	503
		536	536	227	763



Port Terminal Status

Vancouver

Daily Activity for 9/18/2019

	Cars Arrived	Cars Received in Interchange	Cars Delivered in Interchange	Cars Placed for Unloading	Loads on Wheels at Destination As of 9/18/2019
CN	283	39	313	107	244
CP	820	313	39	542	992
SRY	1			2	5

Port Unloads

	09/18	09/17	Week To Date	Last Week
CN	69	68	292	1,446
CP	467	385	1,265	2,673
SRY	2	4	14	51

Age Profile of Loaded Cars Waiting Placement for Unloading

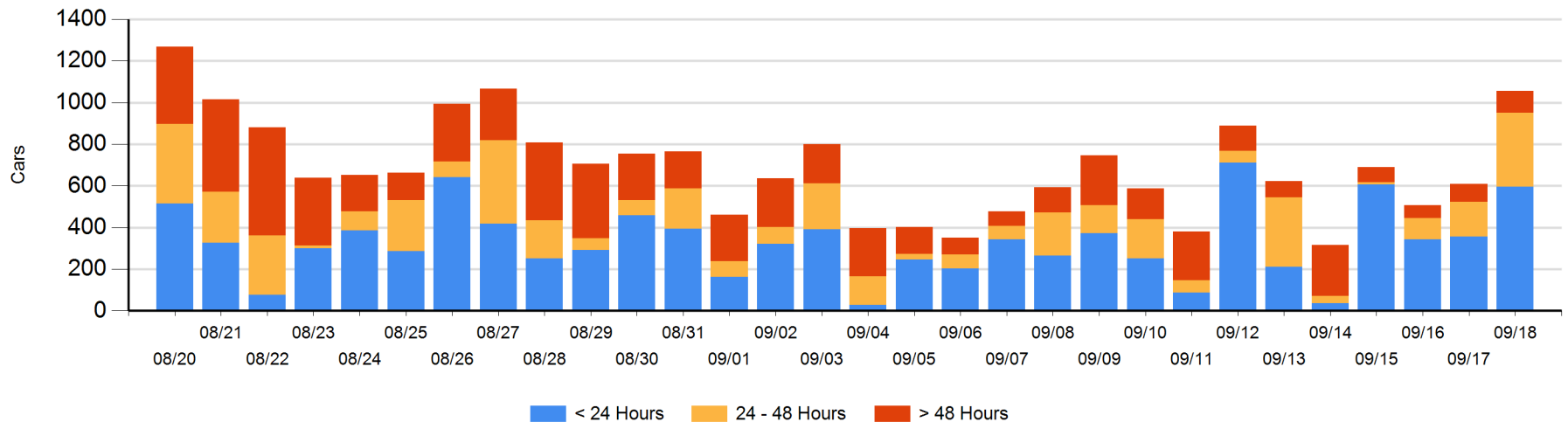
Today

	< 24 Hrs	24 - 48 Hrs	> 48-72 Hrs	> 72 Hrs	Total On Hand
CN	142	121	28	3	294
CP	455	233	35	35	758
SRY				3	3

Change in Last 24 Hours

	< 24 Hrs	24-48 Hrs	48 - 72 Hrs	> 72 Hrs
CN	-32	-12	28	-6
CP	273	198	2	-4
SRY				0

Loaded Cars on Hand Vancouver Waiting for Placement - Last 30 Days All Railways



Port Terminal Status

Prince Rupert

Daily Activity for 9/18/2019

Cars Arrived	Cars Received in Interchange	Cars Delivered in Interchange	Cars Placed for Unloading	Loads on Wheels at Destination As of 9/18/2019
				1

Port Unloads

	09/18	09/17	Week To Date	Last Week
CN		123	212	906

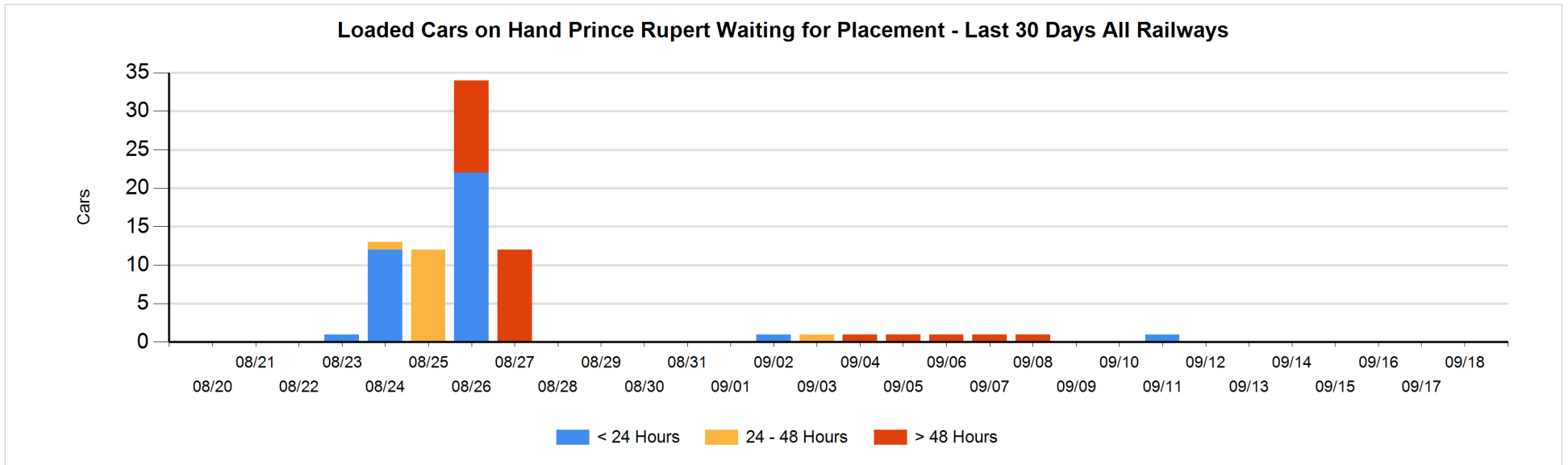
Age Profile of Loaded Cars Waiting Placement for Unloading

Today

< 24 Hrs	24 - 48 Hrs	> 48-72 Hrs	> 72 Hrs	Total On Hand
				0

Change in Last 24 Hours

< 24 Hrs	24-48 Hrs	48 - 72 Hrs	> 72 Hrs



Port Terminal Status

Thunder Bay

Daily Activity for 9/18/2019

	Cars Arrived	Cars Received in Interchange	Cars Delivered in Interchange	Cars Placed for Unloading	Loads on Wheels at Destination As of 9/18/2019
CN	99			81	214
CP	10			63	225

Port Unloads

	09/18	09/17	Week To Date	Last Week
CN	191	1	301	475
CP	36	330	609	933

Age Profile of Loaded Cars Waiting Placement for Unloading

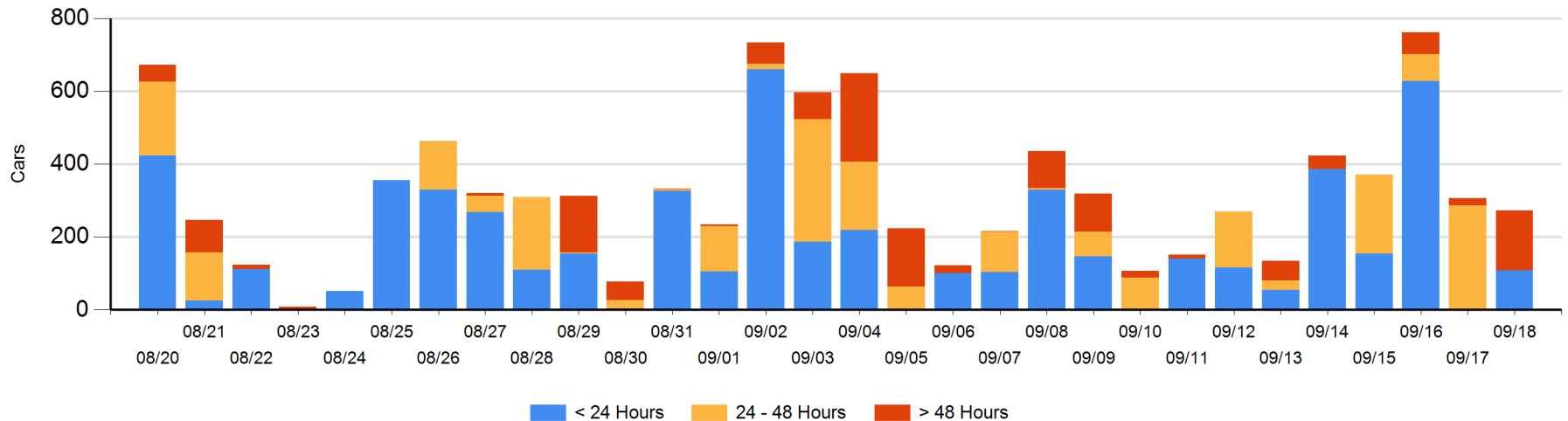
Today

	< 24 Hrs	24 - 48 Hrs	> 48-72 Hrs	> 72 Hrs	Total On Hand
CN	99		3		102
CP	10		146	14	170

Change in Last 24 Hours

	< 24 Hrs	24-48 Hrs	48 - 72 Hrs	> 72 Hrs
CN	99	-84	3	
CP	10	-203	126	14

Loaded Cars on Hand Thunder Bay Waiting for Placement - Last 30 Days All Railways



Measurement Definitions

Loads on Wheels	<p>Count of loaded rail cars including all rail cars that have been released loaded at origin and have not been reported by the railway as unloaded at destination.</p> <p>Counts include all rail cars (hopper cars and boxcars) moving within a pipeline.</p>
Loads Not Moving	<p>Loaded rail cars for which the railways have not reported a movement event for 48 hours or more whether the rail car is at origin, enroute or at destination.</p>
Port Unloads	<p>Count of rail cars reported by railways as unloaded at the western port destinations of Vancouver, Prince Rupert and Thunder Bay.</p> <p>Unload counts include all rail cars (hopper cars and boxcars) unloaded by all receivers including major port terminals, transloaders and other receivers.</p>
Cars Arrived	<p>Count of rail cars reported as arrived at the destination railway terminal.</p>
Cars Received in Interchange	<p>Count of rail cars received in interchange by each railway within a destination railway terminal. Interchange activity is tracked for the Vancouver and Thunder Bay pipelines as applicable.</p>
Cars Delivered in Interchange	<p>Count of rail cars delivered in interchange by each railway within a destination railway terminal. Interchange activity is tracked for the Vancouver and Thunder Bay pipelines as applicable.</p>
Cars Placed for Unloading	<p>Count of rail cars reported by the railways as placed loaded at the receiver's facility for unloading.</p>
Loads on Wheels at Destination	<p>Count of rail cars that remain under load within the destination railway terminal including rail cars that have been reported as placed for unloading but not yet reported as unloaded.</p>
Waiting Placement for Unloading	<p>Count of rail cars that have been reported as arrived at the destination railway terminal but not reported as placed for unloading by the railway.</p> <p>For the Ports of Vancouver, Prince Rupert and Thunder Bay the count of rail cars waiting placement for unloading is categorized by age – i.e. the elapsed time from arrival at destination to the current report date.</p>