

**SPEED READ**

- Loads on wheels rose overnight, reflecting an increase in CN volumes offset by reduced CP volumes. On a net basis, volumes increased due to higher volumes in the Prince Rupert, Thunder Bay and USA/MEX corridors offset by reduced traffic in the Vancouver and E. Canada corridors.
- Network fluidity improved overnight, led by a decline in idle car counts on both CN and CP by 22% (-64) and 4% (-25), respectively. The total count of cars for 4+ days on both railways declined significantly by 48% (-176) overnight - currently at 191 cars.
- Four days in Week 7 unloads now behind prior week's performance by 350 unloads, marking reduced unloads at Prince Rupert and Vancouver offset by improved week over week performance at Thunder Bay.

=====

**Loads on Wheels**

- Loads on wheels rose 4% (+272) overnight, due to higher volumes on CN offset by reduced volumes on CP - combined total at 7,450 and 11% above the trailing 30-day average.
- On a net basis, the increase in loads on wheels indicates higher volumes in the Prince Rupert, Thunder Bay and USA/MEX corridors offset by reduced traffic in the Vancouver and E. Canada corridors.
- CN volumes gained 13% (+418) overnight, with higher traffic in the Prince Rupert, Thunder Bay and E. Canada corridors offset by lower traffic in the USA/MEX and Vancouver corridors. System wide CN loads on wheels currently at 3,647 and 15% above the trailing 30-day average.
- CP volumes fell 6% (-209) overnight, driven by a decline in traffic across all corridors other than Thunder Bay. CP system wide loads on wheels currently at 3,580 and 5% above the trailing 30-day average.
- Vancouver currently at 4,136, declined 5% (-224) overnight, now 7% above the trailing 30-day average.
- The Prince Rupert pipeline presently at 930, increased 39% (+263) overnight, and 10% above the trailing 30-day average.
- Thunder Bay volumes increased 20% (+244) overnight - currently at 1,463 and 34% above the trailing 30-day average, with 65% of traffic moving on CP.

**Hopper Car Rationing**

- No hopper cars were rationed by either CN or CP in week 6.

**Loads Not Moving**

- **The count of cars not moving for 48+ hours fell 10% (-89) overnight, reflecting reduced counts on both CN and CP. Idle car counts currently at 798 and 19% above the trailing 30-day average.**
- CN
  - **The count of idle cars for 48+ hours fell 22% (-64) overnight and have now decreased for the fourth consecutive day - currently at 225 cars.**
  - The number of cars idle for 4+ days declined 60% (-122) overnight - currently at 80 cars.
  - The count of cars not moving for 7+ days declined 68% (-51) overnight - now at 24 cars.
  - Vancouver represents 30% of all idle cars.
  - In total 36% of all idle cars are dwelling at origin locations.
- CP
  - **CP idle car counts for 48+ hours declined 4% (-25) overnight - currently at 573 cars.**
  - The number of cars idle for 4+ days declined 33% (-54) overnight - now at 111 cars.
  - The number of cars idle for 7+ days increased 27% (+12) overnight - now at 56 cars.

- Vancouver accounts for 63% of all idle cars.
- In total 46% of all idle cars are dwelling at origin locations.

### **Port Performance**

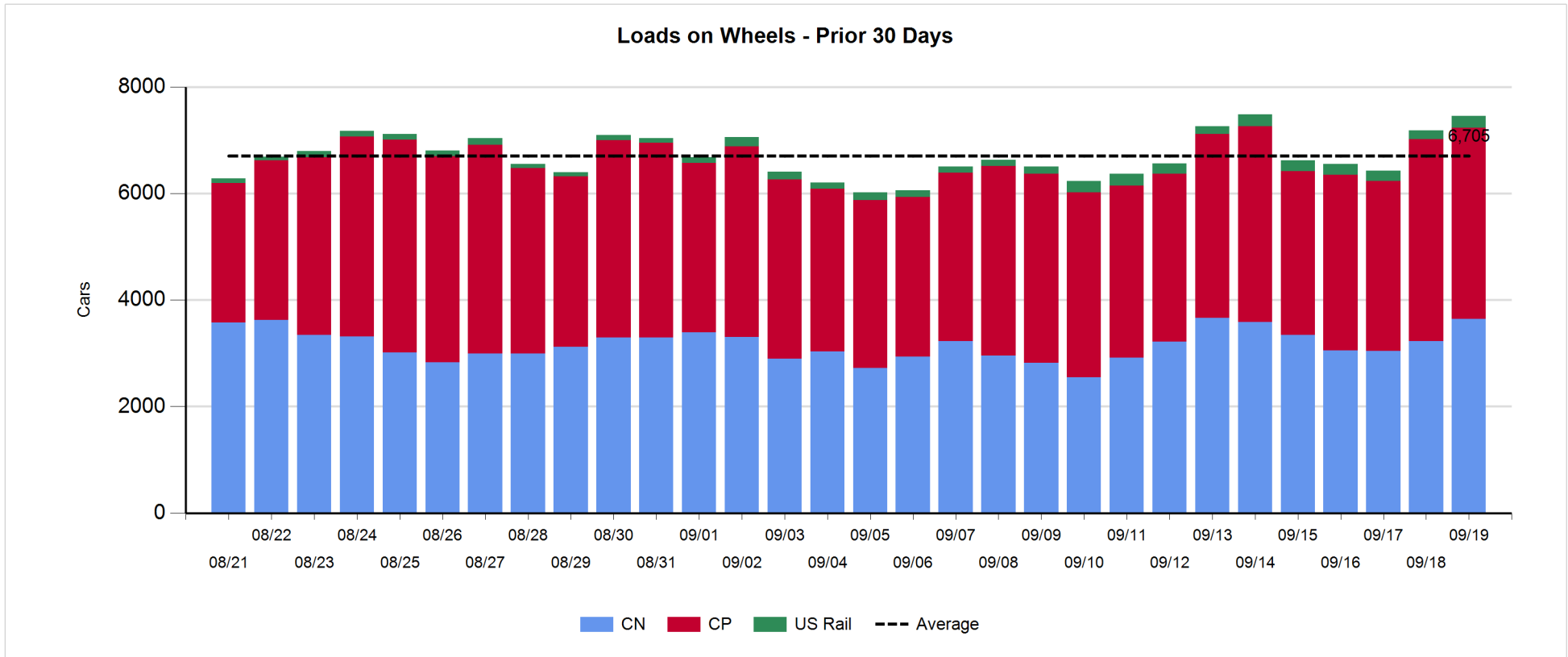
- CN and CP reported a total of 771 cars unloaded at the three major ports, now 19% below the trailing 30-day average. Four days in Week 7 unloads now behind last week's pace by 350 unloads, marking reduced unloads at Prince Rupert and Vancouver offset by higher unloads at Thunder Bay.
- Vancouver
  - 590 unloads reported by CN and CP at the Port of Vancouver; CN - 162 and CP - 428. Four days in Week 7 unloads are tracking behind last week's performance by more than 150 unloads.
  - There are less than 1,300 cars on site at Vancouver with 650 cars arriving at the port in the last 24 hours.
  - CN and CP have more than 700 cars in British Columbia en route to Vancouver, with 200 cars at Kamloops and west, and 52% of traffic moving on CN.
- Prince Rupert
  - Prince Rupert reported zero unloads, now behind last week's unloads after four days by more than 300 unloads.
  - Loads on wheels remain below 1,000 cars - currently at 930 cars.
  - There are 150 cars west of Jasper en route to Prince Rupert.
  - There are 8 cars on site at Prince Rupert with zero cars arriving at the port in the last 24 hours.
- Thunder Bay
  - 181 unloads were reported at Thunder Bay yesterday. Four days in Week 7 unloads are tracking ahead of last week's pace by fewer than 150 unloads.
  - There are fewer than 800 cars on site at Thunder Bay with more than 500 cars arriving at the port in the prior 24 hours.
  - There are 50 cars en route to Thunder Bay from Winnipeg and east.

**Daily Loads on Wheels - 9/19/2019**

	E Canada	Prince Rupert	Thunder Bay	USA/MEX	Vancouver	Total
CN	310	930	519	175	1,713	3,647
CP	68		944	163	2,405	3,580
Short Line	1				18	19
US Rail				204		204
	379	930	1,463	542	4,136	7,450

**Change in Loads on Wheels - Prior 24 Hours**

	E Canada	Prince Rupert	Thunder Bay	USA/MEX	Vancouver	Total
CN	39	263	134	-10	-8	418
CP	-57		110	-33	-229	-209
Short Line	-1				13	12
US Rail				51		51
	-19	263	244	8	-224	272

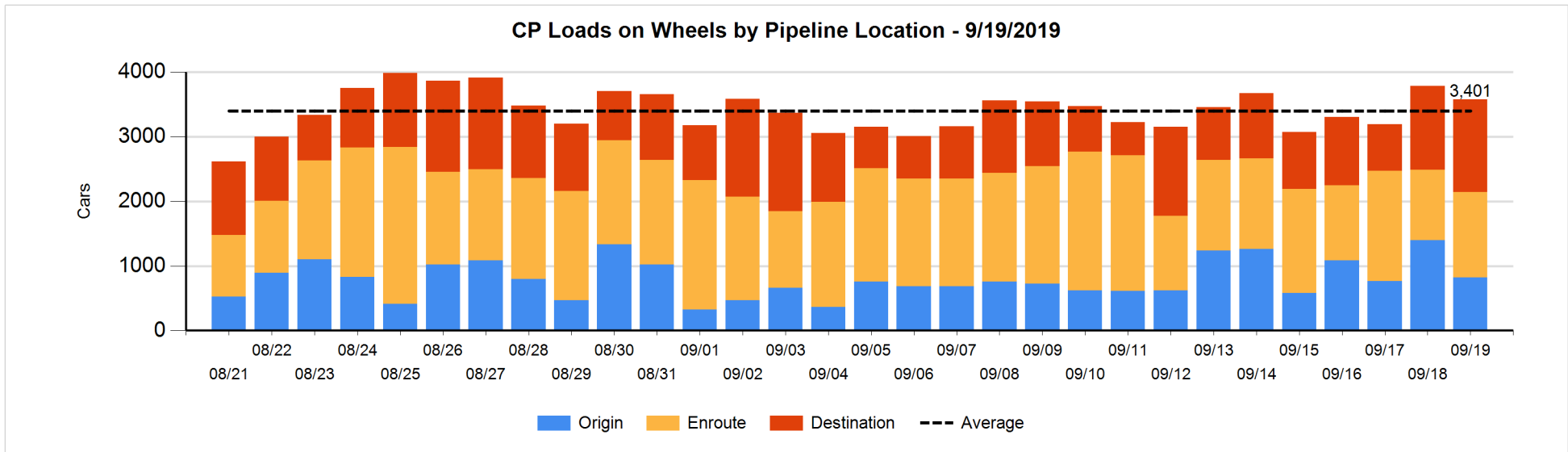
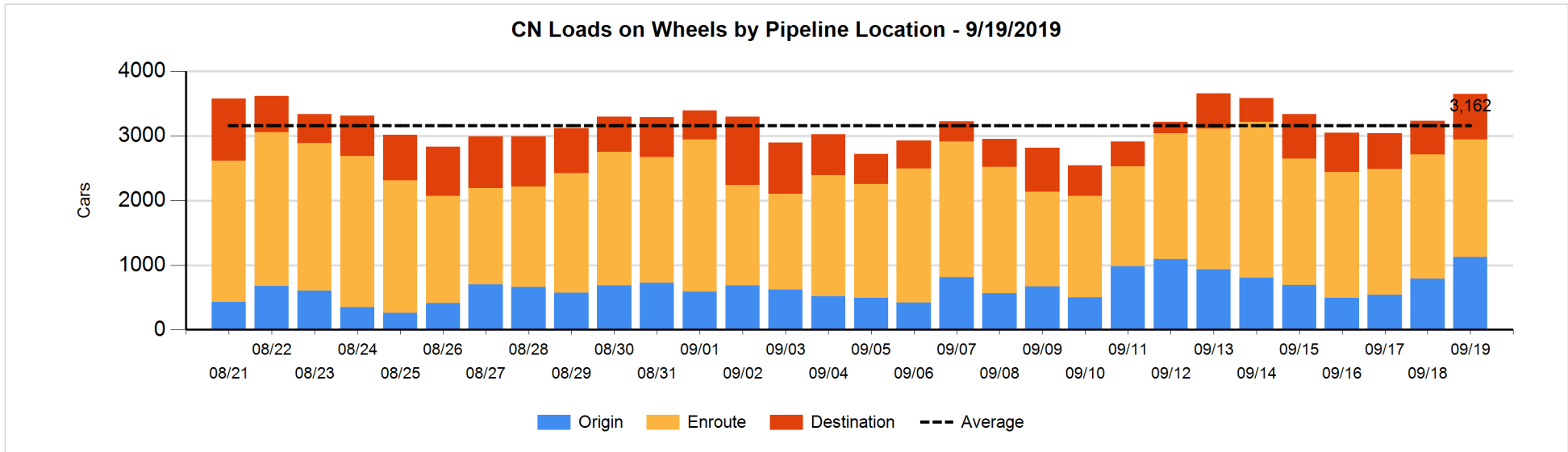


**Daily Loads on Wheels By Pipeline Location - 9/19/2019**

	E Canada	Prince Rupert	Thunder Bay	USA/MEX	Vancouver	Total
CN						
Origin	3	299	102	99	623	1,126
Enroute	281	623	150	58	710	1,822
Destination	26	8	267	18	380	699
	310	930	519	175	1,713	3,647
CP						
Origin	6		425	47	342	820
Enroute	56		1	91	1,175	1,323
Destination	6		518	25	888	1,437
	68		944	163	2,405	3,580
US Rail / Short Line						
Origin						
Enroute				111		111
Destination	1			93	18	112
	1			204	18	223

**Change in Daily Loads on Wheels By Pipeline Location - Prior 24 Hours**

	E Canada	Prince Rupert	Thunder Bay	USA/MEX	Vancouver	Total
CN						
Origin	-76	-3	101	-18	330	334
Enroute	123	259	-20	11	-474	-101
Destination	-8	7	53	-3	136	185
	39	263	134	-10	-8	418
CP						
Origin	2		12	-6	-589	-581
Enroute	-2		-195	-27	464	240
Destination	-57		293	0	-104	132
	-57		110	-33	-229	-209
US Rail / Short Line						
Origin						
Enroute	-1			71		70
Destination	0			-20	13	-7
	-1			51	13	63

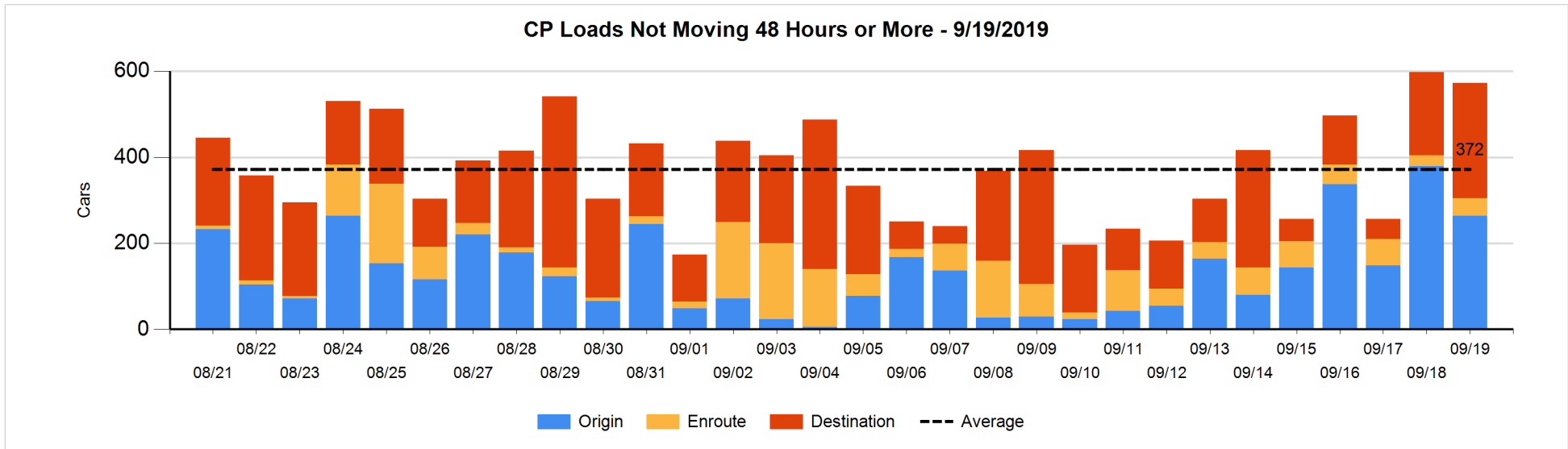
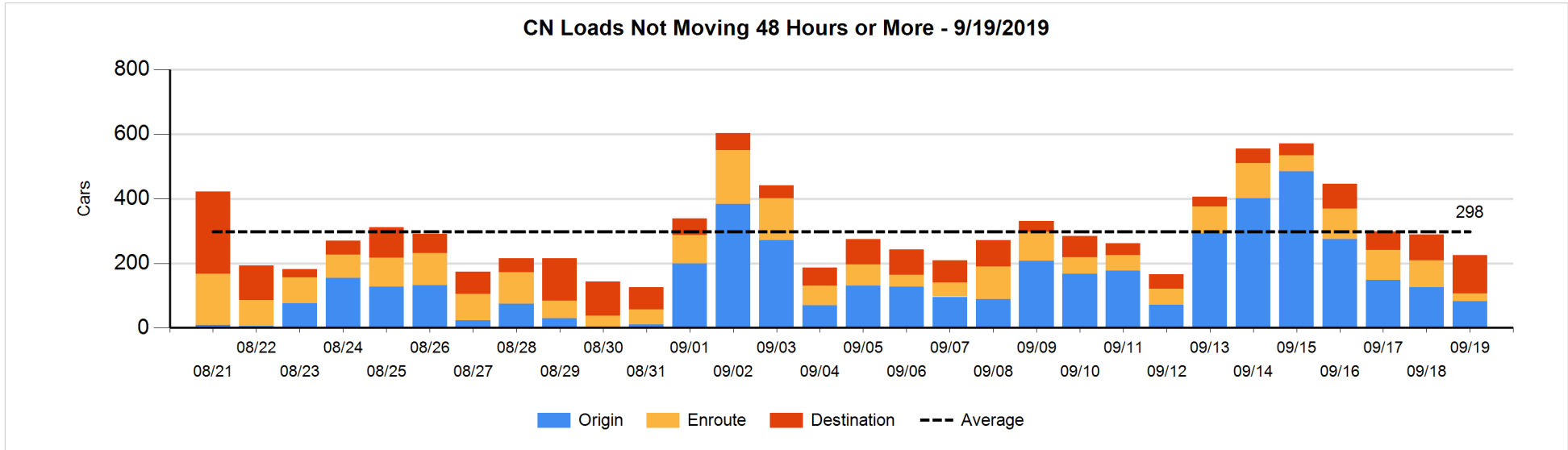


**Loads Not Moving 48 Hours or More - 9/19/2019**

	E Canada	Prince Rupert	Thunder Bay	USA/MEX	Vancouver	Total
<b>CN</b>						
Origin	3			75	4	82
Enroute	7	4	1	3	10	25
Destination	2	1	48	13	54	118
	12	5	49	91	68	225
<b>CP</b>						
Origin	1		85		178	264
Enroute	9			8	24	41
Destination	4		105		159	268
	14		190	8	361	573
<b>US Rail / Short Line</b>						
Origin						
Enroute				18		18
Destination				51	4	55
				69	4	73

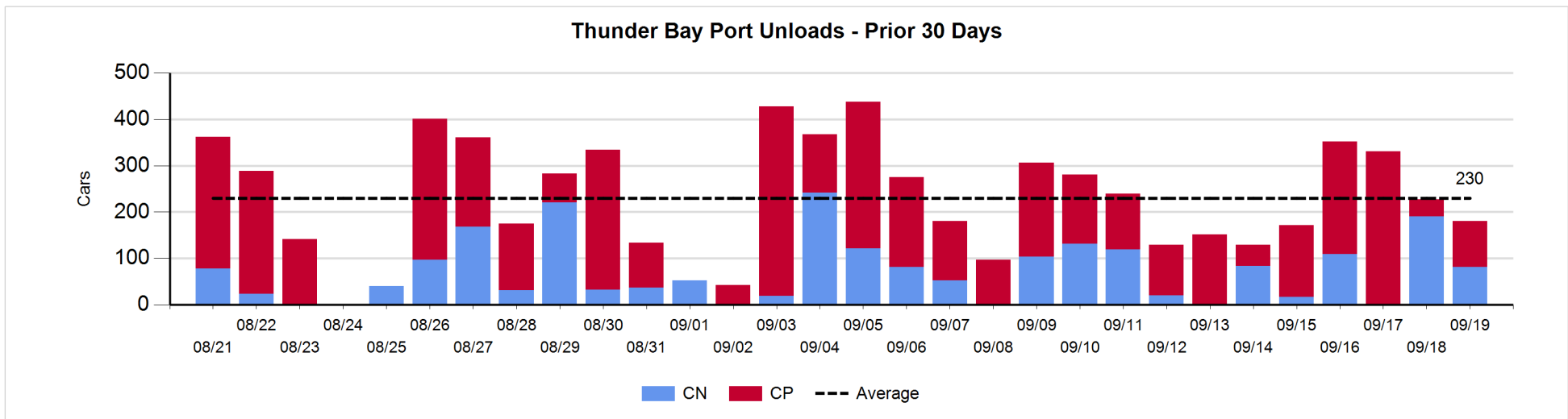
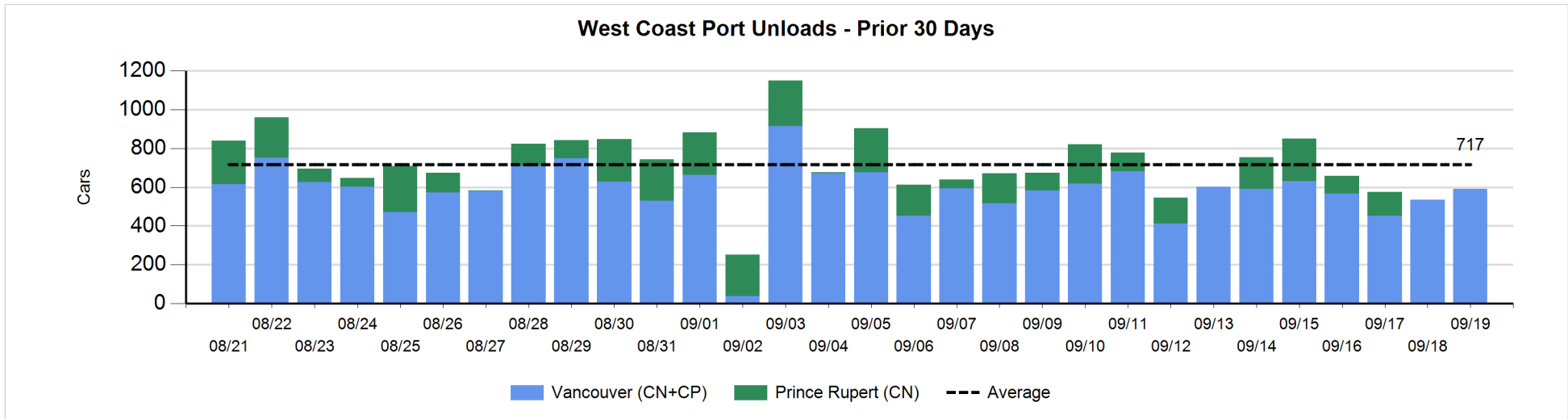
**Change in Loads Not Moving 48 Hours or More - 9/19/2019**

	E Canada	Prince Rupert	Thunder Bay	USA/MEX	Vancouver	Total
<b>CN</b>						
Origin	0			1	-45	-44
Enroute	-47	-8	1	1	-5	-58
Destination	0	0	-10	-1	49	38
	-47	-8	-9	1	-1	-64
<b>CP</b>						
Origin	0		56		-171	-115
Enroute	2			0	14	16
Destination	3		-55		126	74
	5		1	0	-31	-25
<b>US Rail / Short Line</b>						
Origin						
Enroute				5		5
Destination	-1			7	0	6
	-1			12	0	11



**Port Unloads - 9/19/2019**

	Prince Rupert	Vancouver	West Coast Total	Thunder Bay	Total
CN		162	162	81	243
CP		428	428	100	528
		590	590	181	771





**Port Terminal Status**

**Vancouver**

Daily Activity for 9/19/2019

	Cars Arrived	Cars Received in Interchange	Cars Delivered in Interchange	Cars Placed for Unloading	Loads on Wheels at Destination As of 9/19/2019
CN	413	128	203	237	380
CP	227	197	135	482	888
SRY		13		4	18

**Port Unloads**

	09/19	09/18	Week To Date	Last Week
CN	162	69	454	1,446
CP	428	467	1,693	2,673
SRY	4	2	18	51

**Age Profile of Loaded Cars Waiting Placement for Unloading**

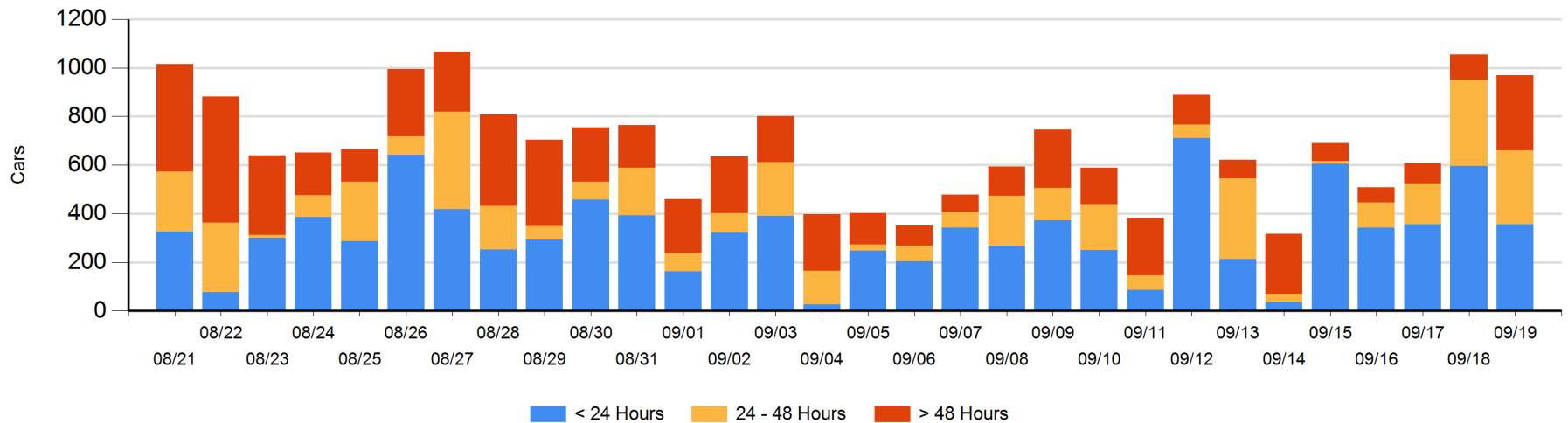
**Today**

	< 24 Hrs	24 - 48 Hrs	> 48-72 Hrs	> 72 Hrs	Total On Hand
CN	171	54	81	27	333
CP	184	252	164	36	636
SRY					0

**Change in Last 24 Hours**

	< 24 Hrs	24-48 Hrs	48 - 72 Hrs	> 72 Hrs
CN	29	-67	53	24
CP	-271	19	129	1
SRY				-3

**Loaded Cars on Hand Vancouver Waiting for Placement - Last 30 Days All Railways**



**Port Terminal Status**

**Prince Rupert**

Daily Activity for 9/19/2019

Cars Arrived	Cars Received in Interchange	Cars Delivered in Interchange	Cars Placed for Unloading	Loads on Wheels at Destination As of 9/19/2019
			7	8

**Port Unloads**

	09/19	09/18	Week To Date	Last Week
CN			212	906

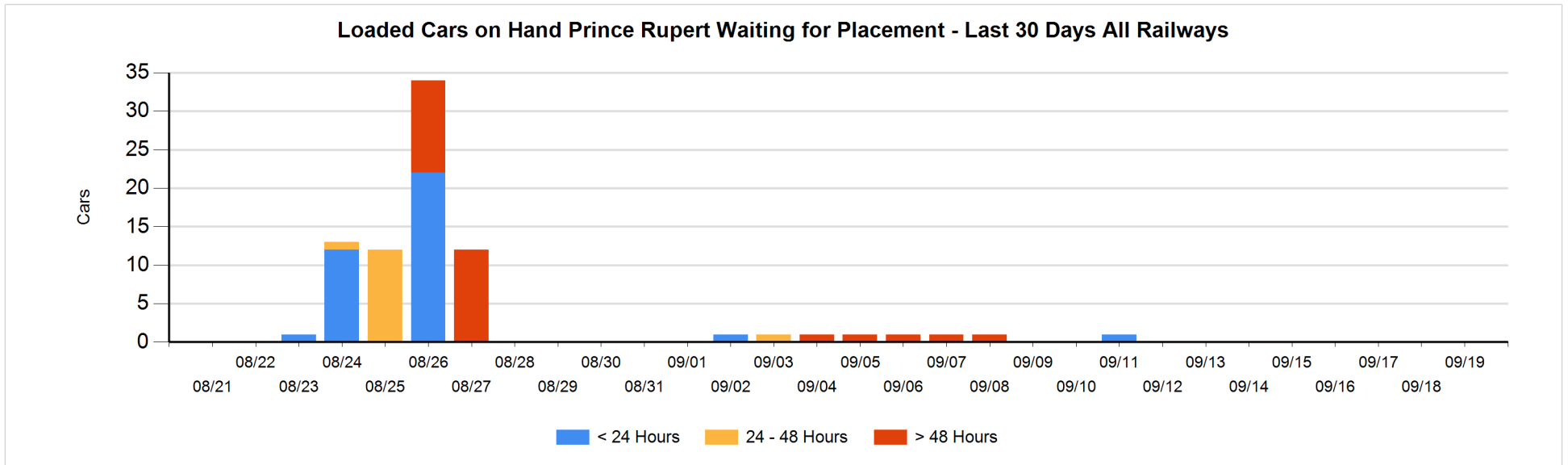
**Age Profile of Loaded Cars Waiting Placement for Unloading**

**Today**

< 24 Hrs	24 - 48 Hrs	> 48-72 Hrs	> 72 Hrs	Total On Hand
				0

**Change in Last 24 Hours**

< 24 Hrs	24-48 Hrs	48 - 72 Hrs	> 72 Hrs



**Port Terminal Status**

**Thunder Bay**

Daily Activity for 9/19/2019

	Cars Arrived	Cars Received in Interchange	Cars Delivered in Interchange	Cars Placed for Unloading	Loads on Wheels at Destination As of 9/19/2019
CN	133			99	267
CP	395			150	518

**Port Unloads**

	09/19	09/18	Week To Date	Last Week
CN	81	191	382	475
CP	100	36	709	933

**Age Profile of Loaded Cars Waiting Placement for Unloading**

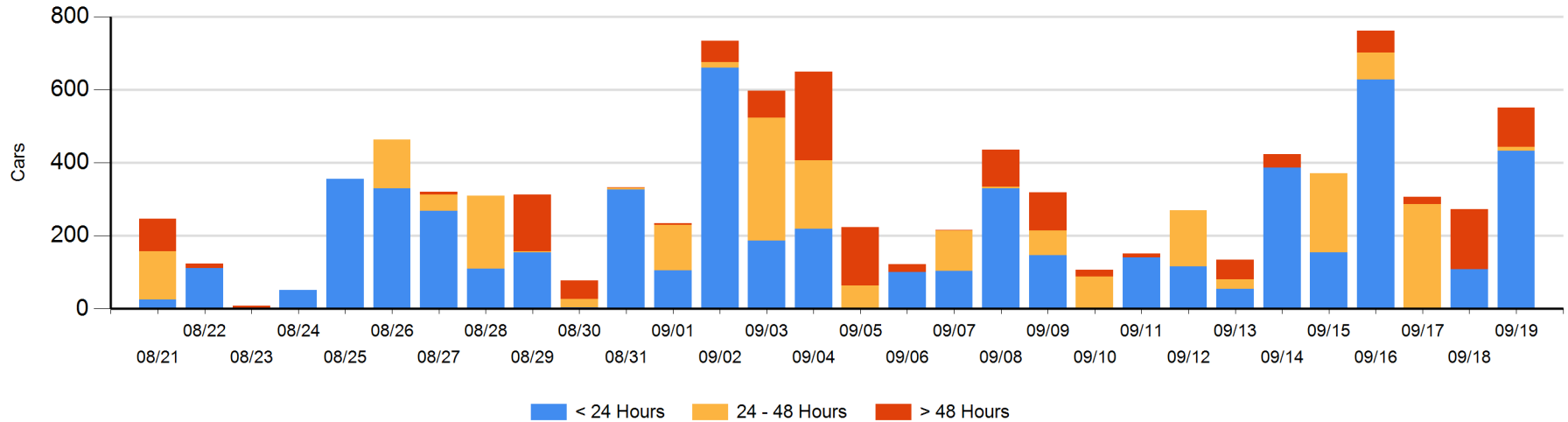
**Today**

	< 24 Hrs	24 - 48 Hrs	> 48-72 Hrs	> 72 Hrs	Total On Hand
CN	133			3	136
CP	300	10		105	415

**Change in Last 24 Hours**

	< 24 Hrs	24-48 Hrs	48 - 72 Hrs	> 72 Hrs
CN	34		-3	3
CP	290	10	-146	91

**Loaded Cars on Hand Thunder Bay Waiting for Placement - Last 30 Days All Railways**



## Measurement Definitions

Loads on Wheels	<p>Count of loaded rail cars including all rail cars that have been released loaded at origin and have not been reported by the railway as unloaded at destination.</p> <p>Counts include all rail cars (hopper cars and boxcars) moving within a pipeline.</p>
Loads Not Moving	<p>Loaded rail cars for which the railways have not reported a movement event for 48 hours or more whether the rail car is at origin, enroute or at destination.</p>
Port Unloads	<p>Count of rail cars reported by railways as unloaded at the western port destinations of Vancouver, Prince Rupert and Thunder Bay.</p> <p>Unload counts include all rail cars (hopper cars and boxcars) unloaded by all receivers including major port terminals, transloaders and other receivers.</p>
Cars Arrived	<p>Count of rail cars reported as arrived at the destination railway terminal.</p>
Cars Received in Interchange	<p>Count of rail cars received in interchange by each railway within a destination railway terminal. Interchange activity is tracked for the Vancouver and Thunder Bay pipelines as applicable.</p>
Cars Delivered in Interchange	<p>Count of rail cars delivered in interchange by each railway within a destination railway terminal. Interchange activity is tracked for the Vancouver and Thunder Bay pipelines as applicable.</p>
Cars Placed for Unloading	<p>Count of rail cars reported by the railways as placed loaded at the receiver's facility for unloading.</p>
Loads on Wheels at Destination	<p>Count of rail cars that remain under load within the destination railway terminal including rail cars that have been reported as placed for unloading but not yet reported as unloaded.</p>
Waiting Placement for Unloading	<p>Count of rail cars that have been reported as arrived at the destination railway terminal but not reported as placed for unloading by the railway.</p> <p>For the Ports of Vancouver, Prince Rupert and Thunder Bay the count of rail cars waiting placement for unloading is categorized by age – i.e. the elapsed time from arrival at destination to the current report date.</p>