

SPEED READ

- Loads on wheels decreased overnight, marking a decline in both CN and CP volumes. On a net basis, volumes decreased due to reduced traffic across all corridors other than E. Canada.
- Network fluidity deteriorated overnight, led by a rise in idle car counts on both CN and CP by 19% (+63) and 143% (+485), respectively. The total count of cars for 4+ days on both railways decreased 42% (-141) overnight - presently at 191 cars.
- Week 7 unloads concluded behind prior week's performance by 150 unloads, marking reduced unloads at Prince Rupert and Vancouver offset by improved week over week performance at Thunder Bay.

Loads on Wheels

- Loads on wheels decreased 9% (-732) overnight, due to lower traffic on both CN and CP - combined total at 7,781 and 13% above the trailing 30-day average.
- On a net basis, the decline in loads on wheels indicates reduced traffic across all corridors other than E. Canada.
- CN volumes decreased 6% (-259) overnight, with lower traffic in the Prince Rupert, Vancouver and USA/MEX corridors offset by higher traffic in the E. Canada and Thunder Bay corridors. System wide CN loads on wheels now at 3,936 and 22% above the trailing 30-day average.
- CP volumes decreased 11% (-475) overnight, driven by a decline in traffic across all corridors other than E. Canada. CP system wide loads on wheels now at 3,680 and 5% above the trailing 30-day average.
- Vancouver presently at 4,333, decreased 11% (-557) overnight, now 10% above the trailing 30-day average.
- The Prince Rupert pipeline presently at 823, decreased 18% (-183) overnight, and 3% below the trailing 30-day average.
- Thunder Bay volumes decreased 5% (-75) overnight - presently at 1,466 and 25% above the trailing 30-day average, with 67% of traffic moving on CP.

Hopper Car Rationing

- No hopper cars were rationed by either CN or CP in week 6.

Loads Not Moving

- **The count of cars not moving for 48+ hours increased significantly by 82% (+548) overnight, marking higher counts on both CN and CP. Idle car counts currently at 1,213, the highest seen in the last 30 days, and 75% above the trailing 30-day average.**
- CN
 - **The count of idle cars for 48+ hours rose 19% (+63) overnight - currently at 389 cars.**
 - The number of cars idle for 4+ days rose 22% (+17) overnight - currently at 96 cars.
 - The count of cars not moving for 7+ days decreased 36% (-13) overnight - currently at 23 cars.
 - Vancouver represents 36% of all idle cars.
 - In total 33% of all idle cars are dwelling at origin locations.
- CP
 - **CP idle car counts for 48+ hours rose significantly by 143% (+485) overnight - presently at 824 cars, the highest seen in the last 30 days.**
 - The number of cars idle for 4+ days decreased significantly by 62% (-158) overnight - now at 95 cars.
 - The number of cars idle for 7+ days increased 6% (+2) overnight - now at 36 cars.
 - Vancouver accounts for 50% of all idle cars.

- In total 66% of all idle cars are dwelling at origin locations.

Port Performance

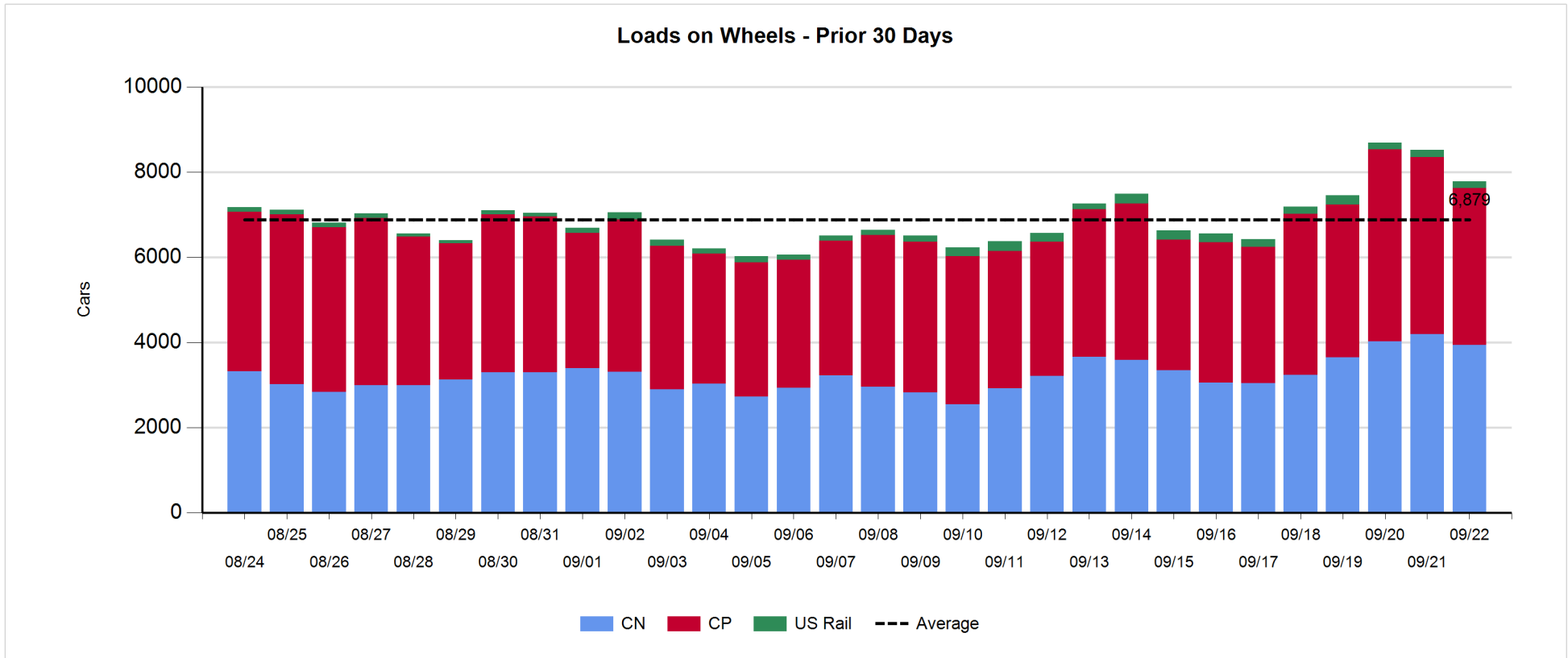
- CN and CP reported a total of 1,036 cars unloaded at the three major ports, now 11% above the trailing 30-day average. Week 7 unloads concluded behind last week's pace by 150 unloads, marking reduced unloads at Prince Rupert and Vancouver offset by higher unloads at Thunder Bay.
- Vancouver
 - 647 unloads reported by CN and CP at the Port of Vancouver; CN - 244 and CP - 403. Week 7 unloads concluded behind last week's performance by nearly 250 unloads.
 - There are 1,200 cars on site at Vancouver with 550 cars arriving at the port in the last 24 hours.
 - CN and CP have 1,100 cars in British Columbia en route to Vancouver, with more than 300 cars at Kamloops and west, and 52% of traffic moving on CP.
- Prince Rupert
 - Prince Rupert reported 183 unloads, concluded behind last week's unloads by 300 unloads.
 - Loads on wheels now below 1,000 cars - now at 823 cars.
 - There are around 350 cars west of Jasper en route to Prince Rupert.
 - There is 1 car on site at Prince Rupert with nearly 150 cars arriving at the port in the last 24 hours.
- Thunder Bay
 - 206 unloads were reported at Thunder Bay yesterday. Week 7 unloads concluded ahead of last week's pace by more than 350 unloads.
 - There are more than 550 cars on site at Thunder Bay with more than 200 cars arriving at the port in the prior 24 hours.
 - There are 350 cars en route to Thunder Bay from Winnipeg and east.

Daily Loads on Wheels - 9/22/2019

	E Canada	Prince Rupert	Thunder Bay	USA/MEX	Vancouver	Total
CN	461	823	486	175	1,991	3,936
CP	57		980	331	2,312	3,680
Short Line	11				30	41
US Rail				124		124
	529	823	1,466	630	4,333	7,781

Change in Loads on Wheels - Prior 24 Hours

	E Canada	Prince Rupert	Thunder Bay	USA/MEX	Vancouver	Total
CN	102	-183	8	-7	-179	-259
CP	21		-83	-23	-390	-475
Short Line	5				12	17
US Rail				-15		-15
	128	-183	-75	-45	-557	-732

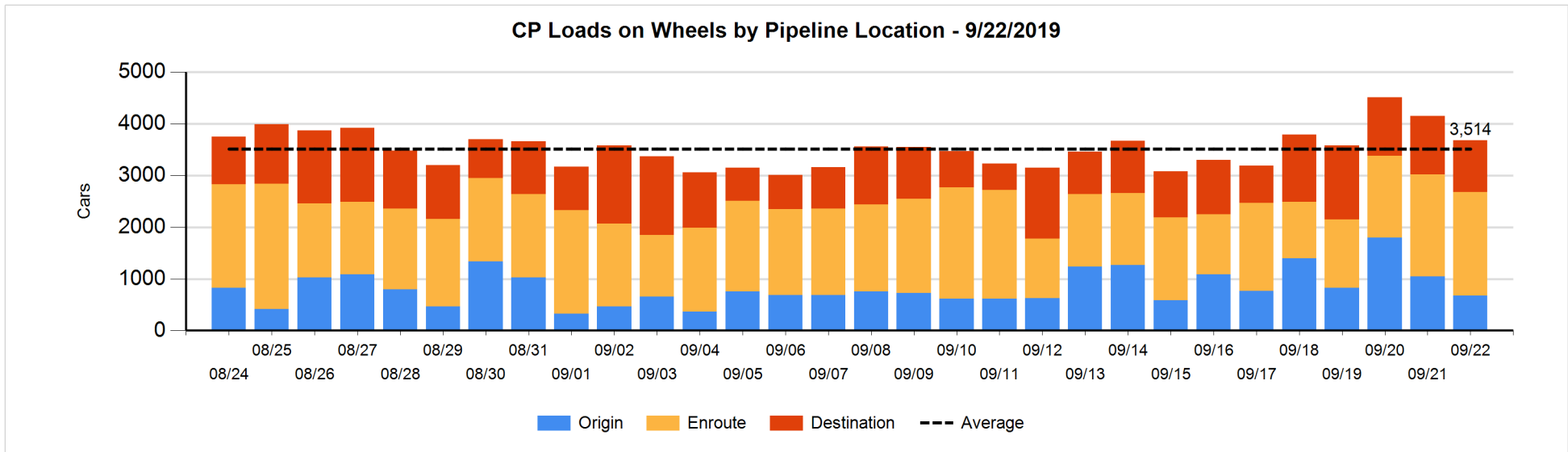
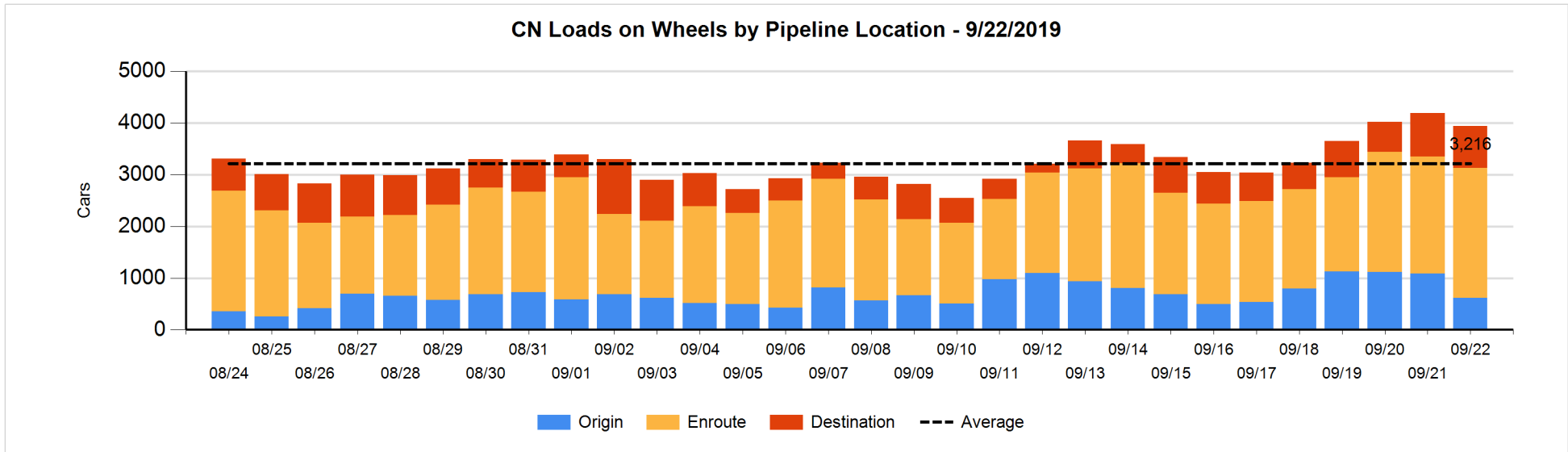


Daily Loads on Wheels By Pipeline Location - 9/22/2019

	E Canada	Prince Rupert	Thunder Bay	USA/MEX	Vancouver	Total
CN						
Origin	142	122	104	2	243	613
Enroute	275	700	104	156	1,280	2,515
Destination	44	1	278	17	468	808
	461	823	486	175	1,991	3,936
CP						
Origin	25		300		350	675
Enroute	27		391	329	1,253	2,000
Destination	5		289	2	709	1,005
	57		980	331	2,312	3,680
US Rail / Short Line						
Origin						
Enroute	6			69		75
Destination	5			55	30	90
	11			124	30	165

Change in Daily Loads on Wheels By Pipeline Location - Prior 24 Hours

	E Canada	Prince Rupert	Thunder Bay	USA/MEX	Vancouver	Total
CN						
Origin	112	-98	5	-11	-478	-470
Enroute	-5	-40	-126	4	412	245
Destination	-5	-45	129	0	-113	-34
	102	-183	8	-7	-179	-259
CP						
Origin	20		-140	-100	-152	-372
Enroute	0		168	100	-237	31
Destination	1		-111	-23	-1	-134
	21		-83	-23	-390	-475
US Rail / Short Line						
Origin						
Enroute	0			7		7
Destination	5			-22	12	-5
	5			-15	12	2

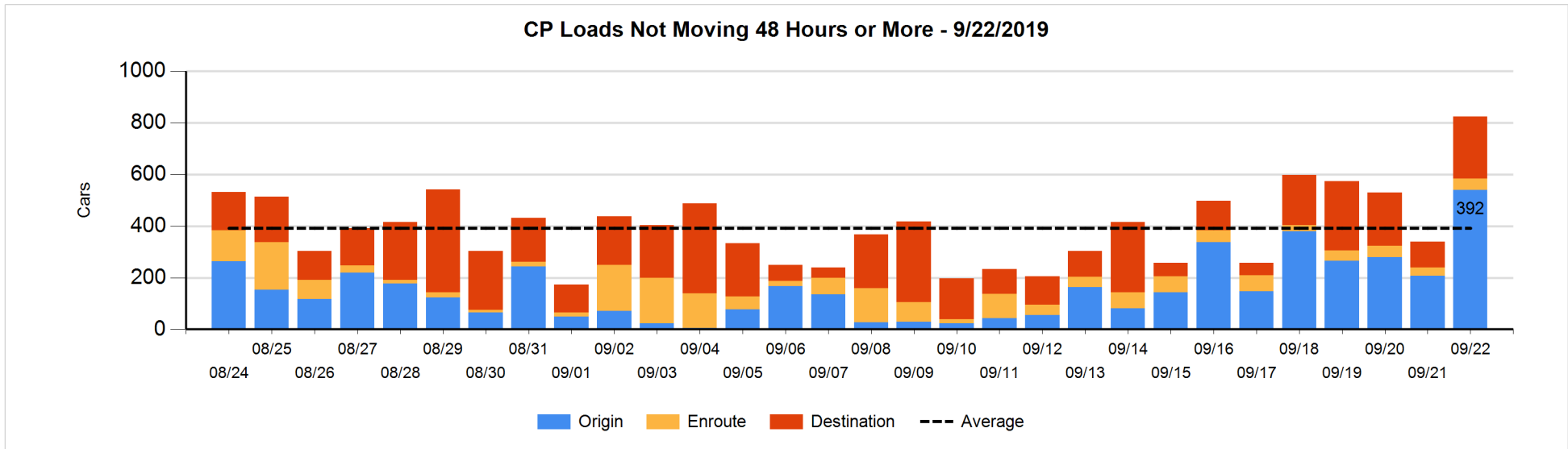
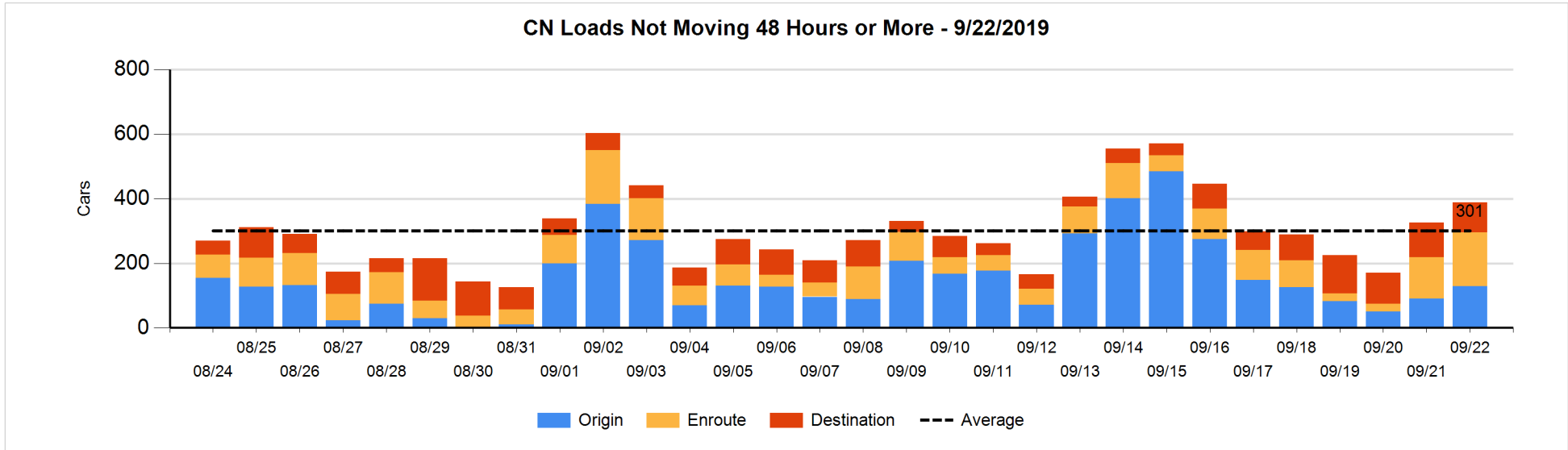


Loads Not Moving 48 Hours or More - 9/22/2019

	E Canada	Prince Rupert	Thunder Bay	USA/MEX	Vancouver	Total
CN						
Origin		22		2	105	129
Enroute	149	3	2	2	11	167
Destination	31	1	30	7	24	93
	180	26	32	11	140	389
CP						
Origin			262		278	540
Enroute	7		1	15	21	44
Destination	4		125		111	240
	11		388	15	410	824
US Rail / Short Line						
Origin						
Enroute				49		49
Destination				51	12	63
				100	12	112

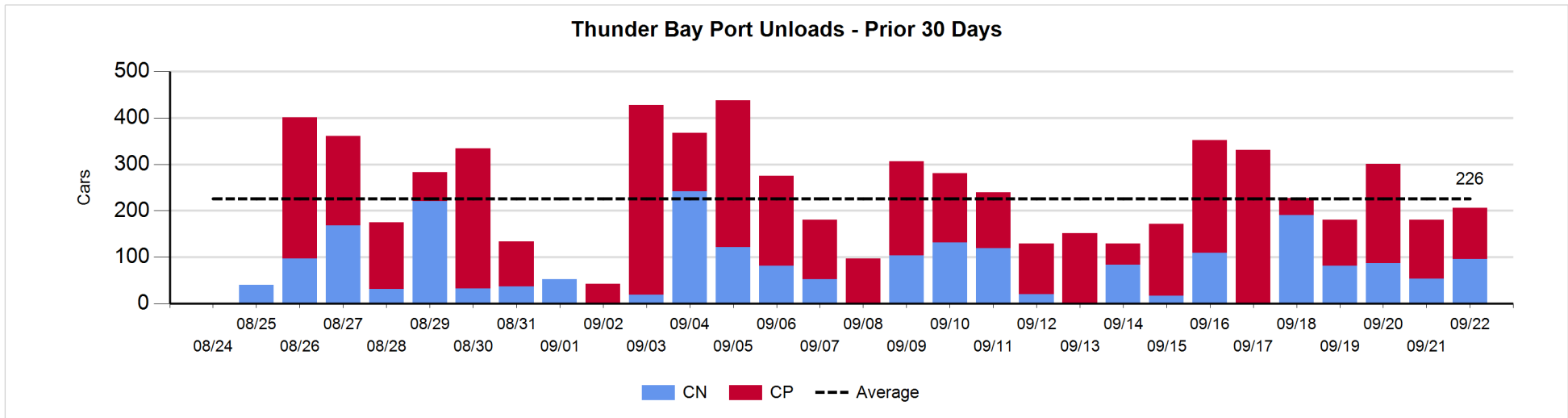
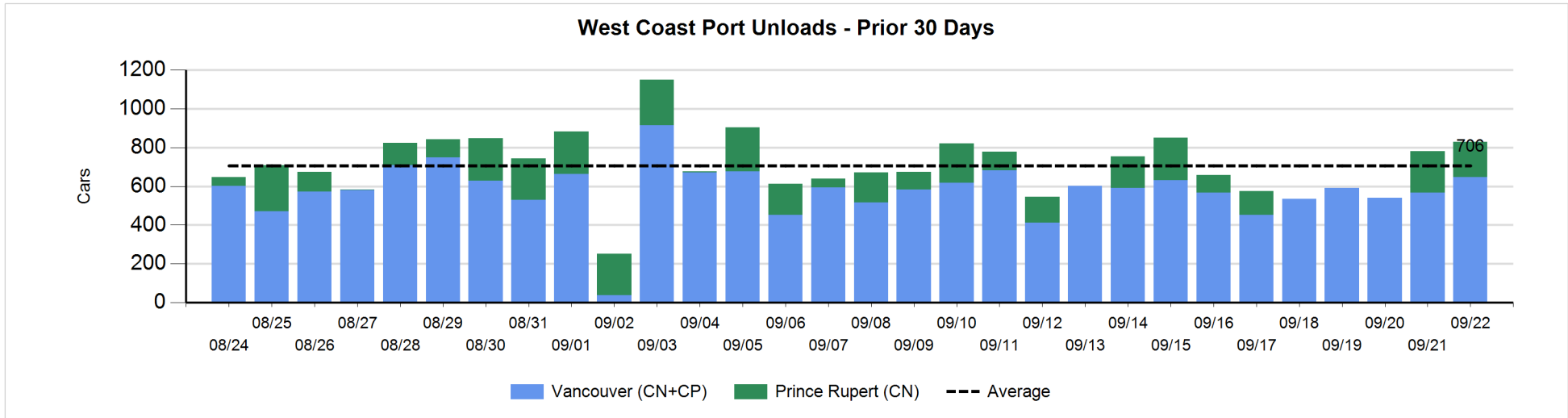
Change in Loads Not Moving 48 Hours or More - 9/22/2019

	E Canada	Prince Rupert	Thunder Bay	USA/MEX	Vancouver	Total
CN						
Origin		0		0	39	39
Enroute	43	-1	-2	0	-1	39
Destination	27	0	-43	0	1	-15
	70	-1	-45	0	39	63
CP						
Origin			171		161	332
Enroute	-5		0	5	12	12
Destination	0		99		42	141
	-5		270	5	215	485
US Rail / Short Line						
Origin						
Enroute				9		9
Destination				3	11	14
				12	11	23



Port Unloads - 9/22/2019

	Prince Rupert	Vancouver	West Coast Total	Thunder Bay	Total
CN	183	244	427	96	523
CP		403	403	110	513
	183	647	830	206	1,036



Port Terminal Status

Vancouver

Daily Activity for 9/22/2019

	Cars Arrived	Cars Received in Interchange	Cars Delivered in Interchange	Cars Placed for Unloading	Loads on Wheels at Destination As of 9/22/2019
CN	214	243	198	216	468
CP	334	198	250	334	709
SRY		7		4	30

Port Unloads

	09/22	09/21	Week To Date	Last Week
CN	244	274	1,128	1,446
CP	403	294	2,774	2,673
SRY		8	36	51

Age Profile of Loaded Cars Waiting Placement for Unloading

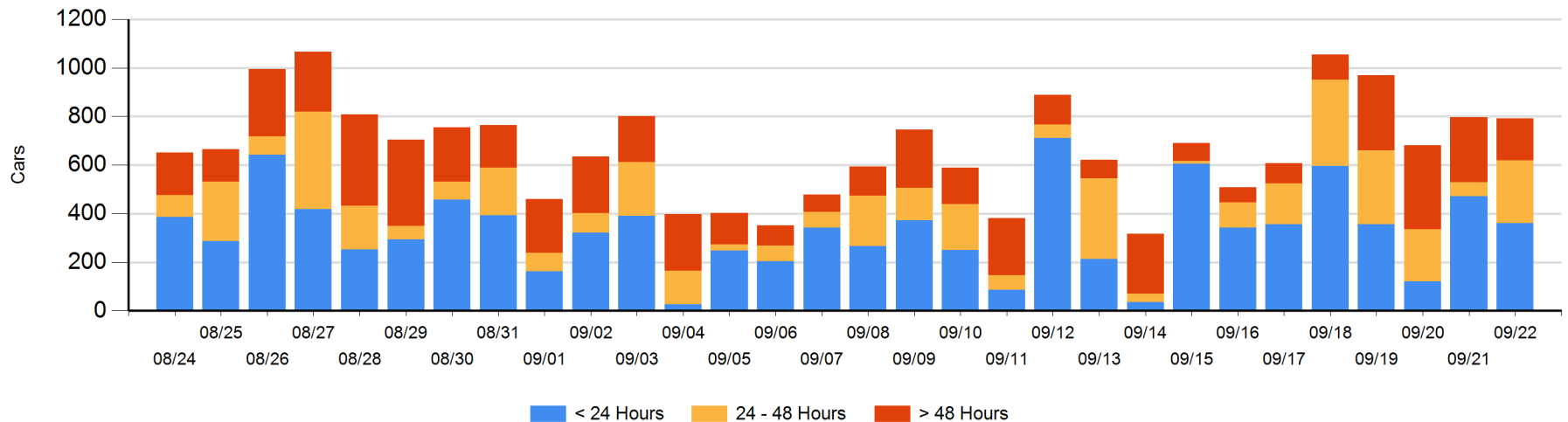
Today

	< 24 Hrs	24 - 48 Hrs	> 48-72 Hrs	> 72 Hrs	Total On Hand
CN	115	145	6	48	314
CP	246	113	50	68	477
SRY					0

Change in Last 24 Hours

	< 24 Hrs	24-48 Hrs	48 - 72 Hrs	> 72 Hrs
CN	1	136	-10	11
CP	-111	63	16	-112
SRY				

Loaded Cars on Hand Vancouver Waiting for Placement - Last 30 Days All Railways



Port Terminal Status

Prince Rupert

Daily Activity for 9/22/2019

	Cars Arrived	Cars Received in Interchange	Cars Delivered in Interchange	Cars Placed for Unloading	Loads on Wheels at Destination As of 9/22/2019
CN	136			136	1

Port Unloads

	09/22	09/21	Week To Date	Last Week
CN	183	213	608	906

Age Profile of Loaded Cars Waiting Placement for Unloading

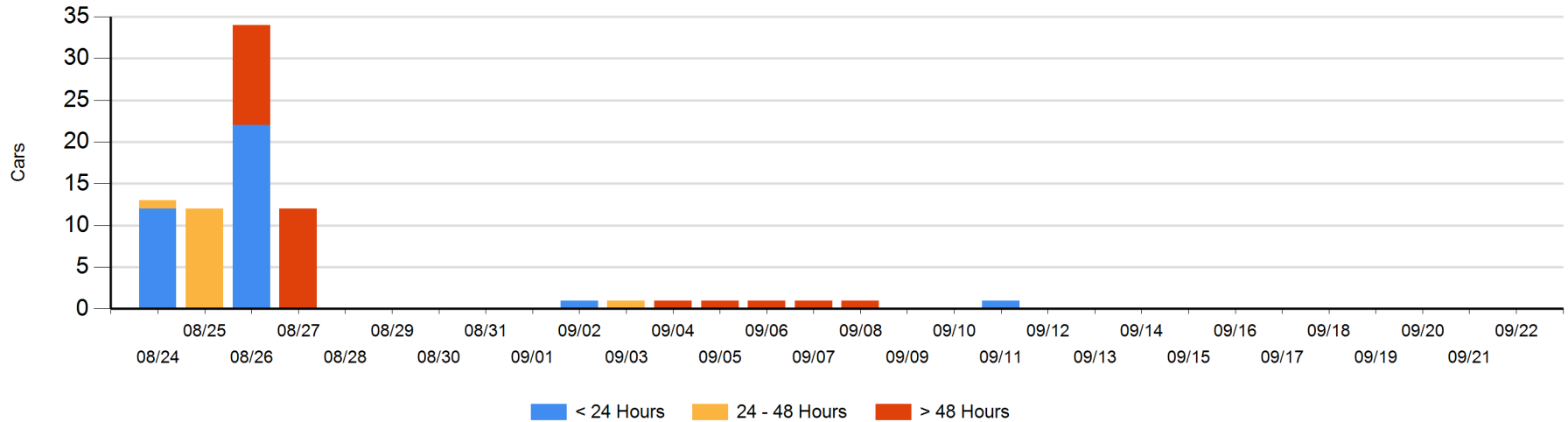
Today

	< 24 Hrs	24 - 48 Hrs	> 48-72 Hrs	> 72 Hrs	Total On Hand
CN					0

Change in Last 24 Hours

	< 24 Hrs	24-48 Hrs	48 - 72 Hrs	> 72 Hrs
CN				

Loaded Cars on Hand Prince Rupert Waiting for Placement - Last 30 Days All Railways



Port Terminal Status

Thunder Bay

Daily Activity for 9/22/2019

	Cars Arrived	Cars Received in Interchange	Cars Delivered in Interchange	Cars Placed for Unloading	Loads on Wheels at Destination As of 9/22/2019
CN	225			248	278
CP				126	289

Port Unloads

	09/22	09/21	Week To Date	Last Week
CN	96	54	619	475
CP	110	126	1,159	933

Age Profile of Loaded Cars Waiting Placement for Unloading

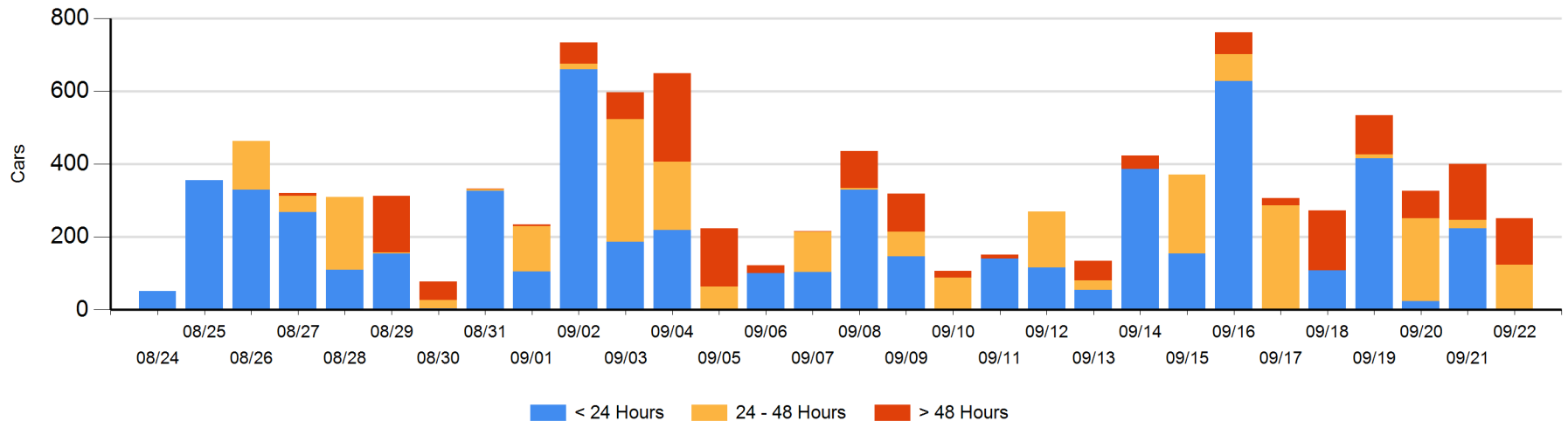
Today

	< 24 Hrs	24 - 48 Hrs	> 48-72 Hrs	> 72 Hrs	Total On Hand
CN				3	3
CP		124		125	249

Change in Last 24 Hours

	< 24 Hrs	24-48 Hrs	48 - 72 Hrs	> 72 Hrs
CN		-23		0
CP	-224	124	-127	101

Loaded Cars on Hand Thunder Bay Waiting for Placement - Last 30 Days All Railways



Measurement Definitions

Loads on Wheels	<p>Count of loaded rail cars including all rail cars that have been released loaded at origin and have not been reported by the railway as unloaded at destination.</p> <p>Counts include all rail cars (hopper cars and boxcars) moving within a pipeline.</p>
Loads Not Moving	<p>Loaded rail cars for which the railways have not reported a movement event for 48 hours or more whether the rail car is at origin, enroute or at destination.</p>
Port Unloads	<p>Count of rail cars reported by railways as unloaded at the western port destinations of Vancouver, Prince Rupert and Thunder Bay.</p> <p>Unload counts include all rail cars (hopper cars and boxcars) unloaded by all receivers including major port terminals, transloaders and other receivers.</p>
Cars Arrived	<p>Count of rail cars reported as arrived at the destination railway terminal.</p>
Cars Received in Interchange	<p>Count of rail cars received in interchange by each railway within a destination railway terminal. Interchange activity is tracked for the Vancouver and Thunder Bay pipelines as applicable.</p>
Cars Delivered in Interchange	<p>Count of rail cars delivered in interchange by each railway within a destination railway terminal. Interchange activity is tracked for the Vancouver and Thunder Bay pipelines as applicable.</p>
Cars Placed for Unloading	<p>Count of rail cars reported by the railways as placed loaded at the receiver's facility for unloading.</p>
Loads on Wheels at Destination	<p>Count of rail cars that remain under load within the destination railway terminal including rail cars that have been reported as placed for unloading but not yet reported as unloaded.</p>
Waiting Placement for Unloading	<p>Count of rail cars that have been reported as arrived at the destination railway terminal but not reported as placed for unloading by the railway.</p> <p>For the Ports of Vancouver, Prince Rupert and Thunder Bay the count of rail cars waiting placement for unloading is categorized by age – i.e. the elapsed time from arrival at destination to the current report date.</p>