

**SPEED READ**

- Loads on wheels declined overnight, marking a decline in CN traffic offset by higher CP volumes. On a net basis, volumes declined due to lower traffic in the Thunder Bay, Prince Rupert and USA/MEX corridors offset by higher volumes in the Vancouver and E. Canada corridors.
- Network fluidity improved overnight, led by a decline in idle car counts on CP by 28% (-199) offset by an increase in idle car counts on CN by 35% (+135). The total count of cars for 4+ days on both railways increased 44% (+84) overnight - now at 275 cars.
- One day in Week 8 unloads now ahead of prior week's performance by 250 unloads, marking improved week over week performance across all three major ports - Vancouver, Thunder Bay and Prince Rupert.

=====

**Loads on Wheels**

- Loads on wheels declined for the third consecutive day, down 3% (-199) overnight, due to lower traffic on CN offset by higher volumes on CP - combined total at 7,670 and 11% above the trailing 30-day average.
- On a net basis, the decline in loads on wheels indicates lower traffic in the Thunder Bay, Prince Rupert and USA/MEX corridors offset by higher volumes in the Vancouver and E. Canada corridors.
- CN volumes decreased 7% (-285) overnight, with lower traffic in the Thunder Bay, Prince Rupert and Vancouver corridors offset by higher volumes in the E. Canada and USA/MEX corridors. System wide CN loads on wheels now at 3,739 and 16% above the trailing 30-day average.
- CP volumes increased 3% (+118) overnight, driven by a rise in volumes in the Vancouver and E. Canada corridors offset by a decline in traffic in the Thunder Bay and USA/MEX corridors. CP system wide loads on wheels currently at 3,798 and 8% above the trailing 30-day average.
- Vancouver presently at 4,562, increased 5% (+229) overnight, now 15% above the trailing 30-day average.
- The Prince Rupert pipeline presently at 697, declined 15% (-126) overnight and have now decreased for the third consecutive day, and 17% below the trailing 30-day average.
- Thunder Bay volumes declined 26% (-401) overnight - presently at 1,153 and 2% below the trailing 30-day average, with 68% of traffic moving on CP.

**Hopper Car Rationing**

- No hopper cars were rationed by either CN or CP in week 6.

**Loads Not Moving**

- **The count of cars not moving for 48+ hours declined 6% (-64) overnight, reflecting reduced counts on CP offset by higher counts on CN. Idle car counts currently at 1,032 and 48% above the trailing 30-day average.**
- CN
  - **The count of idle cars for 48+ hours increased 35% (+135) overnight and have now increased for the third consecutive day - presently at 524 cars.**
  - The number of cars idle for 4+ days increased for the third consecutive day, up 113% (+108) overnight - presently at 204 cars.
  - The count of cars not moving for 7+ days rose 26% (+6) overnight - now at 29 cars.
  - Vancouver represents 41% of all idle cars.
  - In total 36% of all idle cars are dwelling at origin locations.
- CP
  - **CP idle car counts for 48+ hours decreased 28% (-199) overnight - presently at 508 cars.**
  - The number of cars idle for 4+ days declined for the third consecutive day, down 25% (-24) overnight - now at 71 cars.

- The number of cars idle for 7+ days declined 3% (-1) overnight - presently at 35 cars.
- Vancouver accounts for 58% of all idle cars.
- In total 32% of all idle cars are dwelling at origin locations.

### **Port Performance**

- CN and CP reported a total of 1,261 cars unloaded at the three major ports, now 32% above the trailing 30-day average. One day in Week 8 unloads now ahead of last week's pace by 250 unloads, marking higher unloads across all three major ports - Vancouver, Thunder Bay and Prince Rupert.
- Vancouver
  - 638 unloads reported by CN and CP at the Port of Vancouver; CN - 287 and CP - 351. One day in Week 8 unloads are tracking ahead of last week's performance by more than 50 unloads.
  - There are more than 1,400 cars on site at Vancouver with 850 cars arriving at the port in the last 24 hours.
  - CN and CP have nearly 750 cars in British Columbia en route to Vancouver, with 600 cars at Kamloops and west, and 68% of traffic moving on CP.
- Prince Rupert
  - Prince Rupert reported 223 unloads, now ahead of last week's unloads after one day by about 150 unloads.
  - Loads on wheels now below 1,000 cars - now at 697 cars.
  - There are more than 200 cars west of Jasper en route to Prince Rupert.
  - There are nearly 100 cars on site at Prince Rupert with 300 cars arriving at the port in the last 24 hours.
- Thunder Bay
  - 400 unloads were reported at Thunder Bay yesterday. One day in Week 8 unloads are tracking ahead of last week's pace by 50 unloads.
  - There are 500 cars on site at Thunder Bay with nearly 350 cars arriving at the port in the prior 24 hours.
  - There are more than 350 cars en route to Thunder Bay from Winnipeg and east.

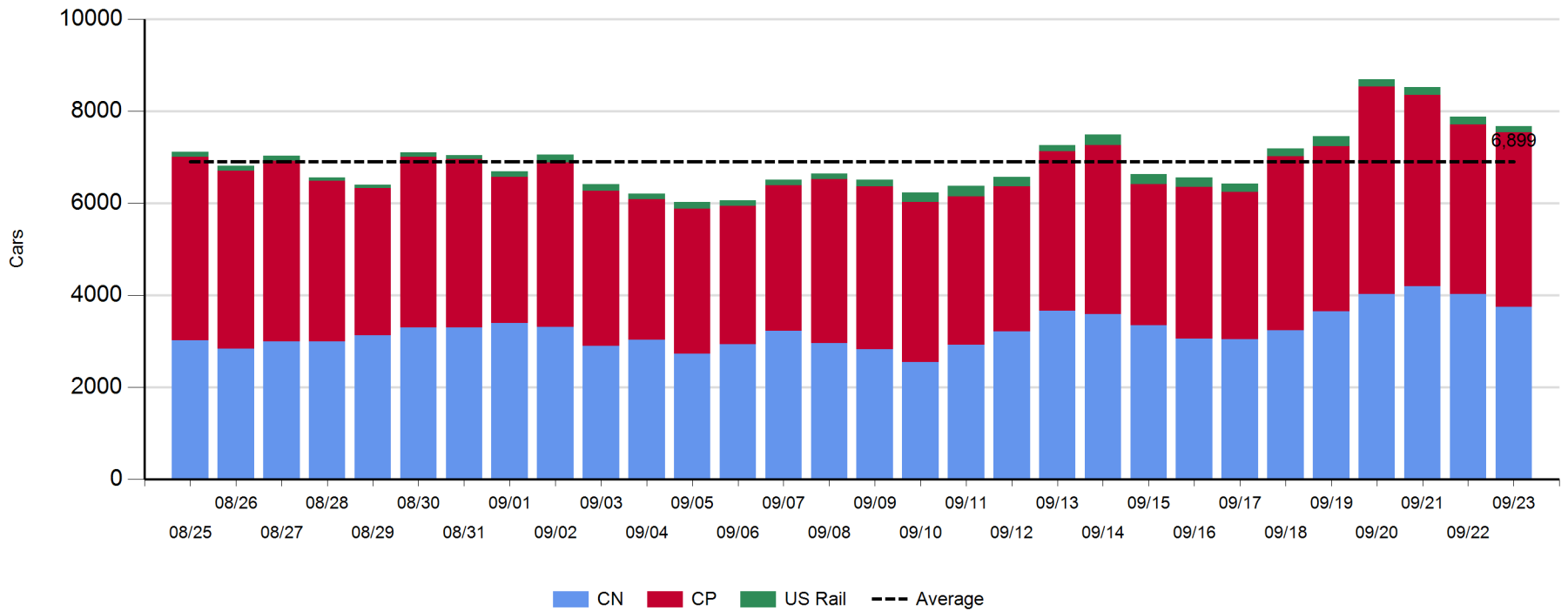
**Daily Loads on Wheels - 9/23/2019**

	E Canada	Prince Rupert	Thunder Bay	USA/MEX	Vancouver	Total
CN	561	697	364	177	1,940	3,739
CP	84		789	329	2,596	3,798
Short Line	6				26	32
US Rail				101		101
	651	697	1,153	607	4,562	7,670

**Change in Loads on Wheels - Prior 24 Hours**

	E Canada	Prince Rupert	Thunder Bay	USA/MEX	Vancouver	Total
CN	100	-126	-210	2	-51	-285
CP	27		-191	-2	284	118
Short Line	-5				-4	-9
US Rail				-23		-23
	122	-126	-401	-23	229	-199

**Loads on Wheels - Prior 30 Days**

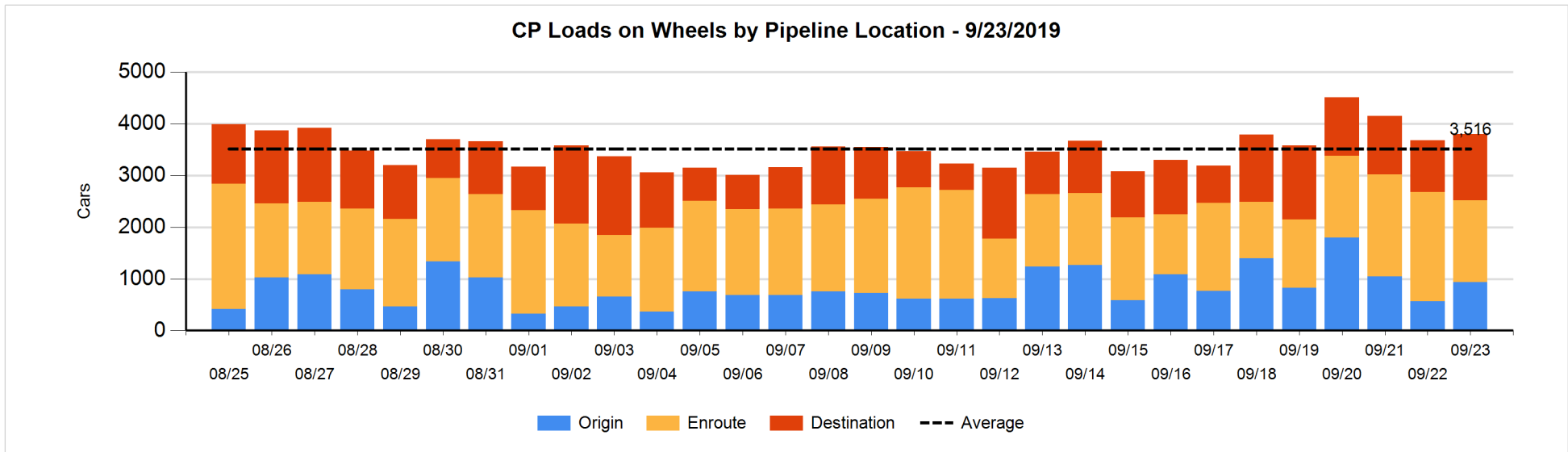
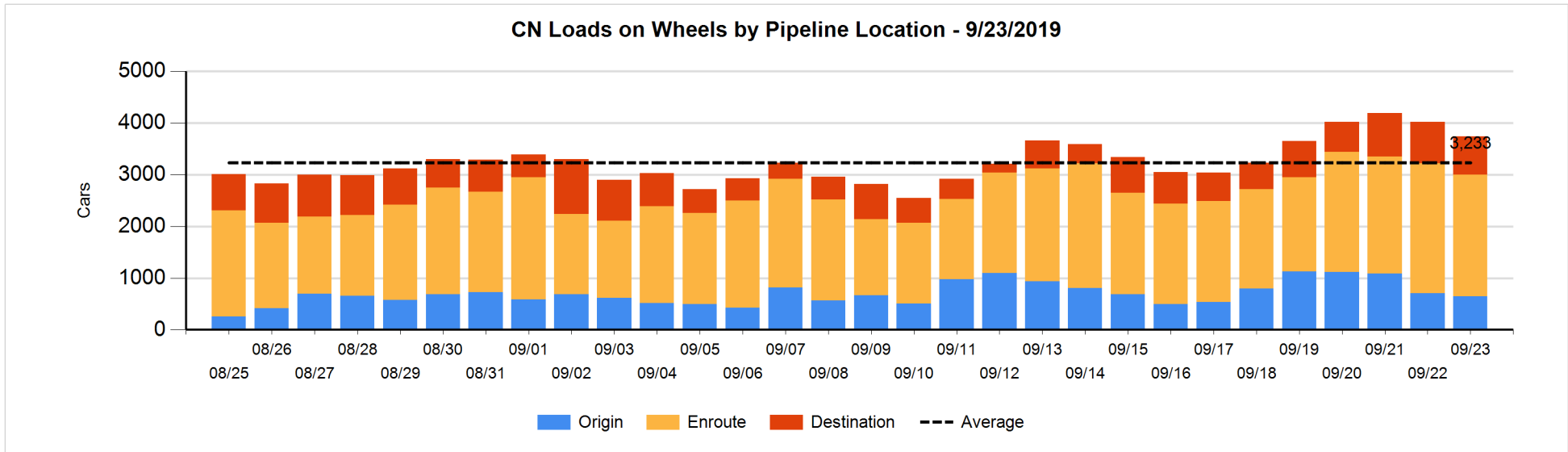


**Daily Loads on Wheels By Pipeline Location - 9/23/2019**

	E Canada	Prince Rupert	Thunder Bay	USA/MEX	Vancouver	Total
CN						
Origin	26	219		7	397	649
Enroute	507	394	296	146	1,003	2,346
Destination	28	84	68	24	540	744
	561	697	364	177	1,940	3,739
CP						
Origin	28		17	62	827	934
Enroute	53		340	267	922	1,582
Destination	3		432		847	1,282
	84		789	329	2,596	3,798
US Rail / Short Line						
Origin						
Enroute	6			72		78
Destination				29	26	55
	6			101	26	133

**Change in Daily Loads on Wheels By Pipeline Location - Prior 24 Hours**

	E Canada	Prince Rupert	Thunder Bay	USA/MEX	Vancouver	Total
CN						
Origin	-116	97	-192	5	154	-52
Enroute	232	-306	192	-10	-277	-169
Destination	-16	83	-210	7	72	-64
	100	-126	-210	2	-51	-285
CP						
Origin	3		-283	62	589	371
Enroute	26		-51	-62	-443	-530
Destination	-2		143	-2	138	277
	27		-191	-2	284	118
US Rail / Short Line						
Origin						
Enroute	0			3		3
Destination	-5			-26	-4	-35
	-5			-23	-4	-32

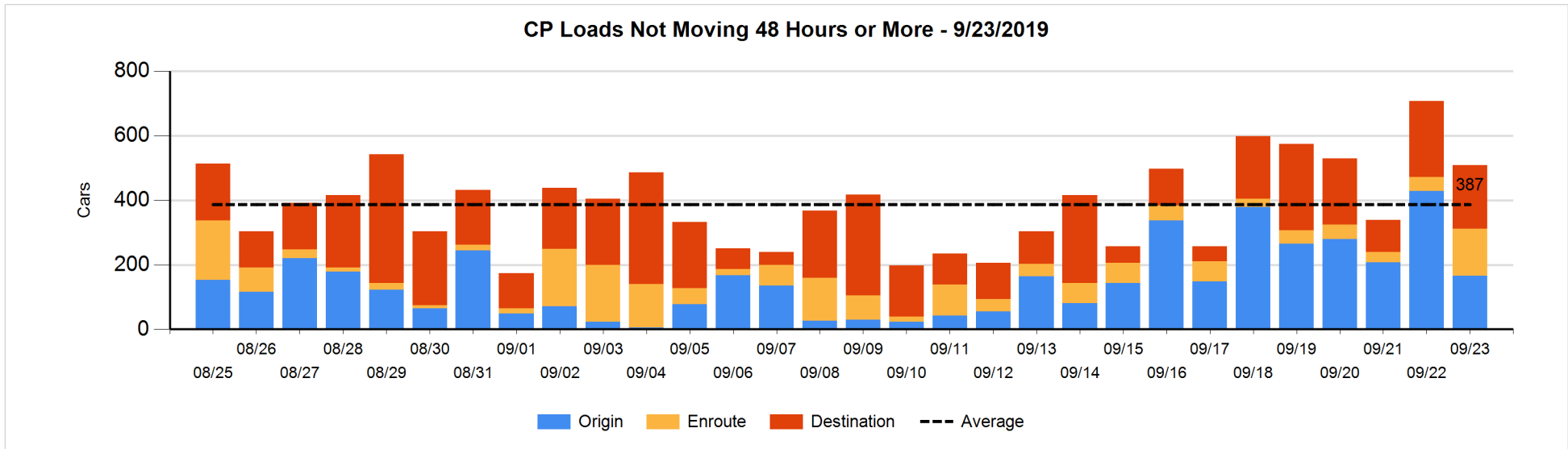
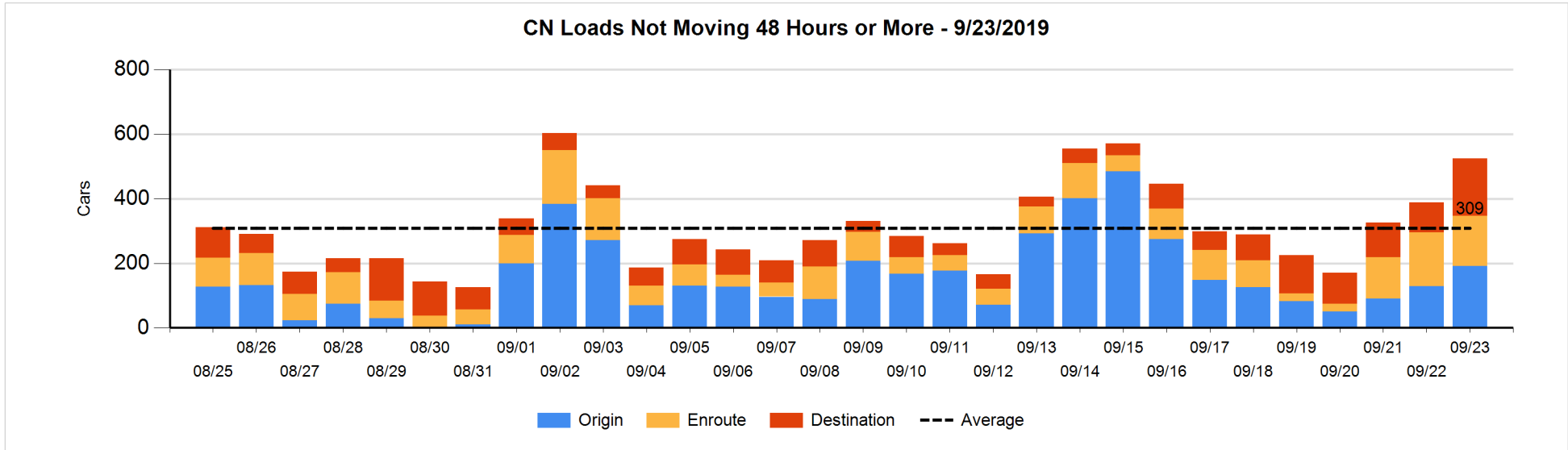


**Loads Not Moving 48 Hours or More - 9/23/2019**

	E Canada	Prince Rupert	Thunder Bay	USA/MEX	Vancouver	Total
<b>CN</b>						
Origin		100		2	89	191
Enroute	145	3	2	1	5	156
Destination	15	1	25	14	122	177
	160	104	27	17	216	524
<b>CP</b>						
Origin					165	165
Enroute	10		1	121	14	146
Destination	3		80		114	197
	13		81	121	293	508
<b>US Rail / Short Line</b>						
Origin						
Enroute				21		21
Destination				23	12	35
				44	12	56

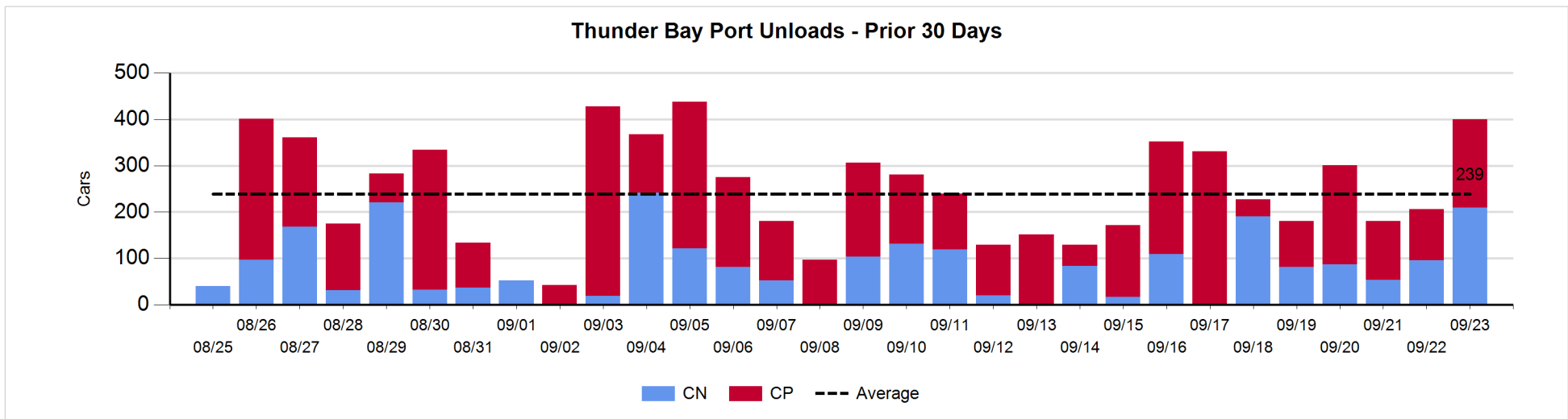
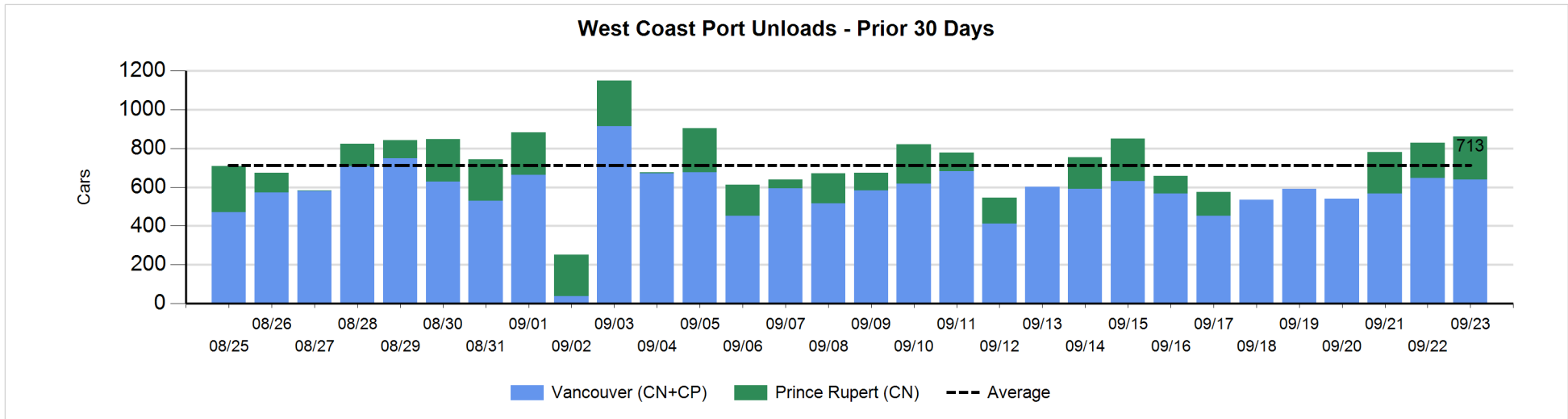
**Change in Loads Not Moving 48 Hours or More - 9/23/2019**

	E Canada	Prince Rupert	Thunder Bay	USA/MEX	Vancouver	Total
<b>CN</b>						
Origin		78		0	-16	62
Enroute	-4	0	0	-1	-6	-11
Destination	-16	0	-5	7	98	84
	-20	78	-5	6	76	135
<b>CP</b>						
Origin			-262		-1	-263
Enroute	3		0	106	-7	102
Destination	-1		-40		3	-38
	2		-302	106	-5	-199
<b>US Rail / Short Line</b>						
Origin						
Enroute				-28		-28
Destination				-28	0	-28
				-56	0	-56



**Port Unloads - 9/23/2019**

	Prince Rupert	Vancouver	West Coast Total	Thunder Bay	Total
CN	223	287	510	209	719
CP		351	351	191	542
	223	638	861	400	1,261





**Port Terminal Status**

**Vancouver**

Daily Activity for 9/23/2019

	Cars Arrived	Cars Received in Interchange	Cars Delivered in Interchange	Cars Placed for Unloading	Loads on Wheels at Destination As of 9/23/2019
CN	392	121	63	335	540
CP	461	63	127	272	847
SRY	1	6		7	26

**Port Unloads**

	09/23	09/22	Week To Date	Last Week
CN	287	244	287	1,128
CP	351	403	351	2,774
SRY	9		9	36

**Age Profile of Loaded Cars Waiting Placement for Unloading**

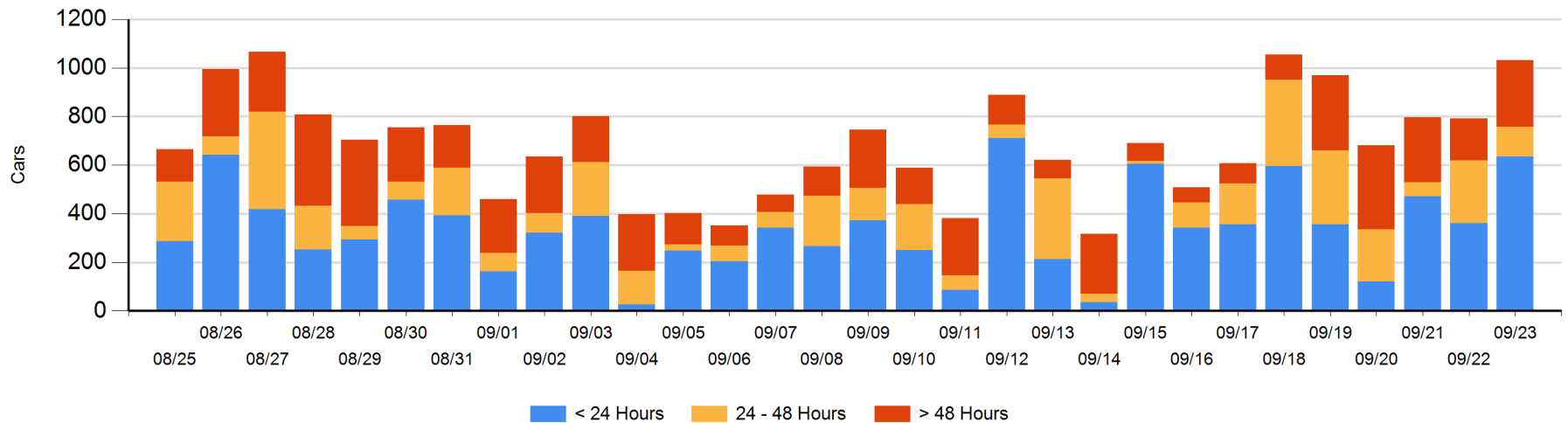
**Today**

	< 24 Hrs	24 - 48 Hrs	> 48-72 Hrs	> 72 Hrs	Total On Hand
CN	265	5	58	34	362
CP	371	116	65	117	669
SRY					0

**Change in Last 24 Hours**

	< 24 Hrs	24-48 Hrs	48 - 72 Hrs	> 72 Hrs
CN	152	-140	52	-14
CP	123	3	15	49
SRY				

**Loaded Cars on Hand Vancouver Waiting for Placement - Last 30 Days All Railways**



**Port Terminal Status**

**Prince Rupert**

Daily Activity for 9/23/2019

	Cars Arrived	Cars Received in Interchange	Cars Delivered in Interchange	Cars Placed for Unloading	Loads on Wheels at Destination As of 9/23/2019
CN	306			306	84

**Port Unloads**

	09/23	09/22	Week To Date	Last Week
CN	223	183	223	608

**Age Profile of Loaded Cars Waiting Placement for Unloading**

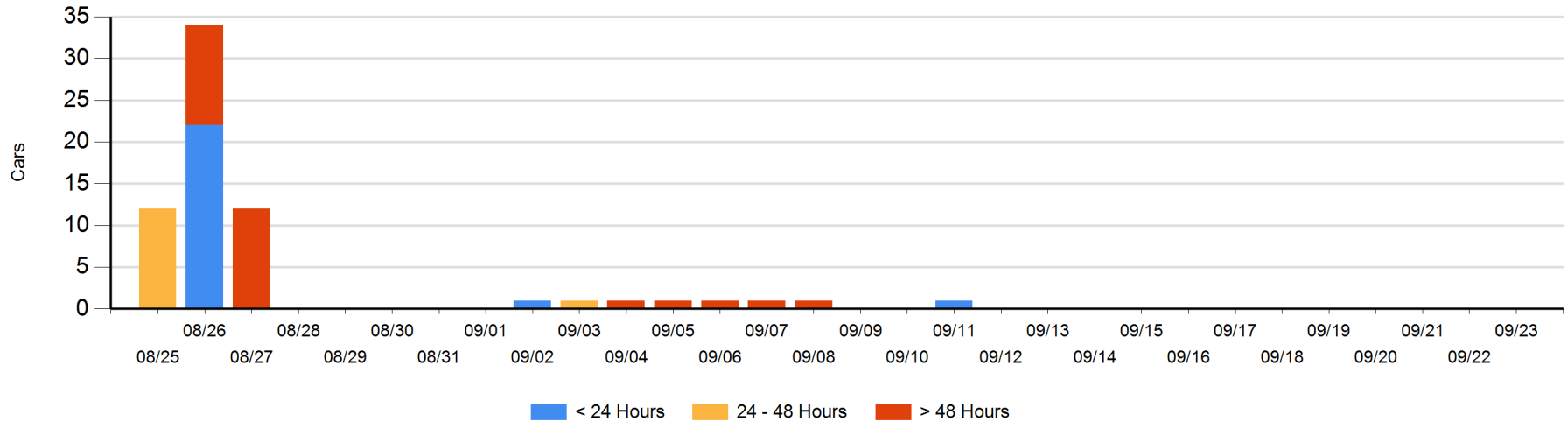
**Today**

	< 24 Hrs	24 - 48 Hrs	> 48-72 Hrs	> 72 Hrs	Total On Hand
CN					0

**Change in Last 24 Hours**

	< 24 Hrs	24-48 Hrs	48 - 72 Hrs	> 72 Hrs
CN				

Loaded Cars on Hand Prince Rupert Waiting for Placement - Last 30 Days All Railways



**Port Terminal Status**

**Thunder Bay**

Daily Activity for 9/23/2019

	Cars Arrived	Cars Received in Interchange	Cars Delivered in Interchange	Cars Placed for Unloading	Loads on Wheels at Destination As of 9/23/2019
CN					68
CP	334			152	432

**Port Unloads**

	09/23	09/22	Week To Date	Last Week
CN	209	96	209	619
CP	191	110	191	1,159

**Age Profile of Loaded Cars Waiting Placement for Unloading**

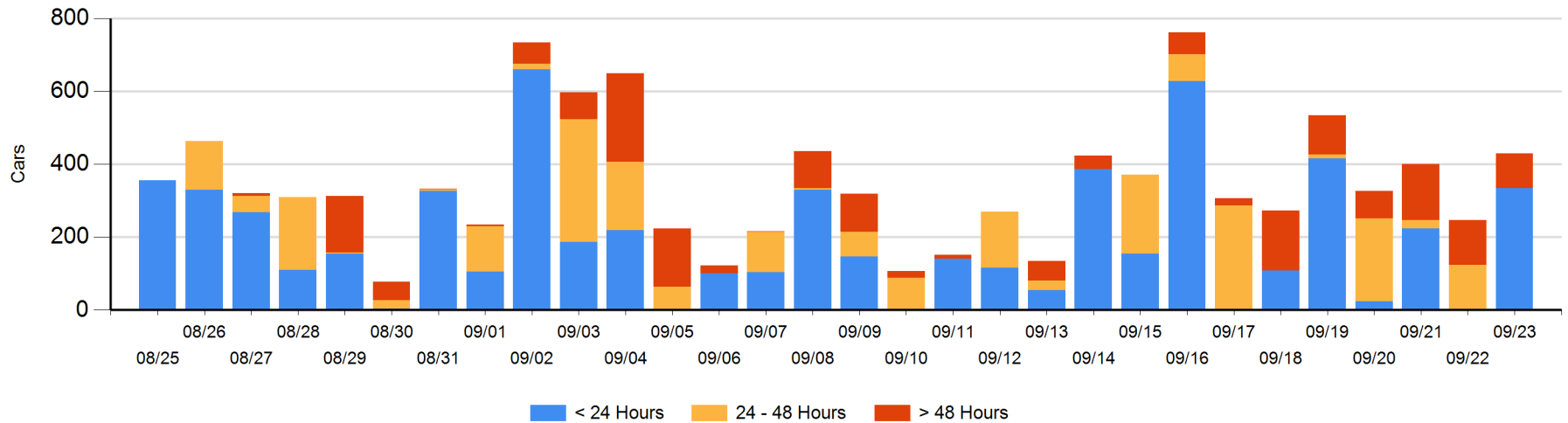
**Today**

	< 24 Hrs	24 - 48 Hrs	> 48-72 Hrs	> 72 Hrs	Total On Hand
CN				3	3
CP	334		39	53	426

**Change in Last 24 Hours**

	< 24 Hrs	24-48 Hrs	48 - 72 Hrs	> 72 Hrs
CN				0
CP	334	-124	39	-67

**Loaded Cars on Hand Thunder Bay Waiting for Placement - Last 30 Days All Railways**



## Measurement Definitions

Loads on Wheels	<p>Count of loaded rail cars including all rail cars that have been released loaded at origin and have not been reported by the railway as unloaded at destination.</p> <p>Counts include all rail cars (hopper cars and boxcars) moving within a pipeline.</p>
Loads Not Moving	<p>Loaded rail cars for which the railways have not reported a movement event for 48 hours or more whether the rail car is at origin, enroute or at destination.</p>
Port Unloads	<p>Count of rail cars reported by railways as unloaded at the western port destinations of Vancouver, Prince Rupert and Thunder Bay.</p> <p>Unload counts include all rail cars (hopper cars and boxcars) unloaded by all receivers including major port terminals, transloaders and other receivers.</p>
Cars Arrived	<p>Count of rail cars reported as arrived at the destination railway terminal.</p>
Cars Received in Interchange	<p>Count of rail cars received in interchange by each railway within a destination railway terminal. Interchange activity is tracked for the Vancouver and Thunder Bay pipelines as applicable.</p>
Cars Delivered in Interchange	<p>Count of rail cars delivered in interchange by each railway within a destination railway terminal. Interchange activity is tracked for the Vancouver and Thunder Bay pipelines as applicable.</p>
Cars Placed for Unloading	<p>Count of rail cars reported by the railways as placed loaded at the receiver's facility for unloading.</p>
Loads on Wheels at Destination	<p>Count of rail cars that remain under load within the destination railway terminal including rail cars that have been reported as placed for unloading but not yet reported as unloaded.</p>
Waiting Placement for Unloading	<p>Count of rail cars that have been reported as arrived at the destination railway terminal but not reported as placed for unloading by the railway.</p> <p>For the Ports of Vancouver, Prince Rupert and Thunder Bay the count of rail cars waiting placement for unloading is categorized by age – i.e. the elapsed time from arrival at destination to the current report date.</p>