

SPEED READ

- Loads on wheels declined overnight, reflecting reduced CP volumes offset by an increase in CN volumes. On a net basis, volumes declined due to lower volumes across all corridors other than USA/MEX.
- Network fluidity improved overnight, led by a decline in idle car counts on both CN and CP by 21% (-110) and 60% (-307), respectively. The total count of cars for 4+ days on both railways rose 8% (+22) overnight - now at 297 cars.
- Two days in Week 8 unloads now ahead of prior week's performance by more than 500 unloads, reflecting improved week over week performance across all three major ports - Vancouver, Thunder Bay and Prince Rupert.

Loads on Wheels

- Loads on wheels declined 2% (-165) overnight and have now decreased for the fourth consecutive day, due to reduced volumes on CP offset by higher traffic on CN - combined total at 7,507 and 9% above the trailing 30-day average.
- On a net basis, the decline in loads on wheels indicates lower volumes across all corridors other than USA/MEX.
- CN volumes increased slightly by (+18) overnight, with higher volumes in the Thunder Bay, USA/MEX and Vancouver corridors offset by reduced volumes in the Prince Rupert and E. Canada corridors. System wide CN loads on wheels now at 3,758 and 15% above the trailing 30-day average.
- CP volumes fell 4% (-153) overnight, driven by a decline in volumes across all corridors other than USA/MEX. CP system wide loads on wheels now at 3,652 and 4% above the trailing 30-day average.
- Vancouver now at 4,438, declined 3% (-125) overnight, now 12% above the trailing 30-day average.
- The Prince Rupert pipeline now at 664, fell for the fourth consecutive day, down 5% (-34) overnight, and 21% below the trailing 30-day average.
- Thunder Bay volumes declined 2% (-22) overnight - currently at 1,131 and 2% below the trailing 30-day average, with 65% of traffic moving on CP.

Hopper Car Rationing

- No hopper cars were rationed by either CN or CP in week 6.

Loads Not Moving

- **The count of cars not moving for 48+ hours declined 40% (-417) overnight, reflecting reduced counts on both CN and CP. Idle car counts currently at 616 and 11% below the trailing 30-day average.**
- CN
 - **The count of idle cars for 48+ hours fell 21% (-110) overnight - now at 415 cars.**
 - The number of cars idle for 4+ days decreased 3% (-7) overnight - now at 197 cars.
 - The count of cars not moving for 7+ days rose 10% (+3) overnight - now at 32 cars.
 - Vancouver represents 51% of all idle cars.
 - In total 6% of all idle cars are dwelling at origin locations.
- CP
 - **CP idle car counts for 48+ hours declined significantly by 60% (-307) overnight - currently at 201 cars.**
 - The number of cars idle for 4+ days rose 41% (+29) overnight - now at 100 cars.
 - The number of cars idle for 7+ days gained 40% (+14) overnight - currently at 49 cars.
 - Vancouver accounts for 82% of all idle cars.

- In total 17% of all idle cars are dwelling at origin locations.

Port Performance

- CN and CP reported a total of 1,162 cars unloaded at the three major ports, now 20% above the trailing 30-day average. Two days in Week 8 unloads now ahead of last week's pace by more than 500 unloads, reflecting higher unloads across all three major ports - Vancouver, Thunder Bay and Prince Rupert.
- Vancouver
 - 770 unloads reported by CN and CP at the Port of Vancouver; CN - 264 and CP - 506. Two days in Week 8 unloads are tracking ahead of last week's performance by 400 unloads.
 - There are more than 1,300 cars on site at Vancouver with 650 cars arriving at the port in the last 24 hours.
 - CN and CP have more than 800 cars in British Columbia en route to Vancouver, with more than 300 cars at Kamloops and west, and 52% of traffic moving on CN.
- Prince Rupert
 - Prince Rupert reported 83 unloads, now ahead of last week's unloads after two days by 100 unloads.
 - Loads on wheels now below 1,000 cars - currently at 664 cars.
 - There are more than 50 cars west of Jasper en route to Prince Rupert.
 - There are 150 cars on site at Prince Rupert with 150 cars arriving at the port in the last 24 hours.
- Thunder Bay
 - 309 unloads were reported at Thunder Bay yesterday. Two days in Week 8 unloads are tracking ahead of last week's pace by 26 unloads.
 - There are more than 500 cars on site at Thunder Bay with more than 300 cars arriving at the port in the prior 24 hours.
 - There are 300 cars en route to Thunder Bay from Winnipeg and east.

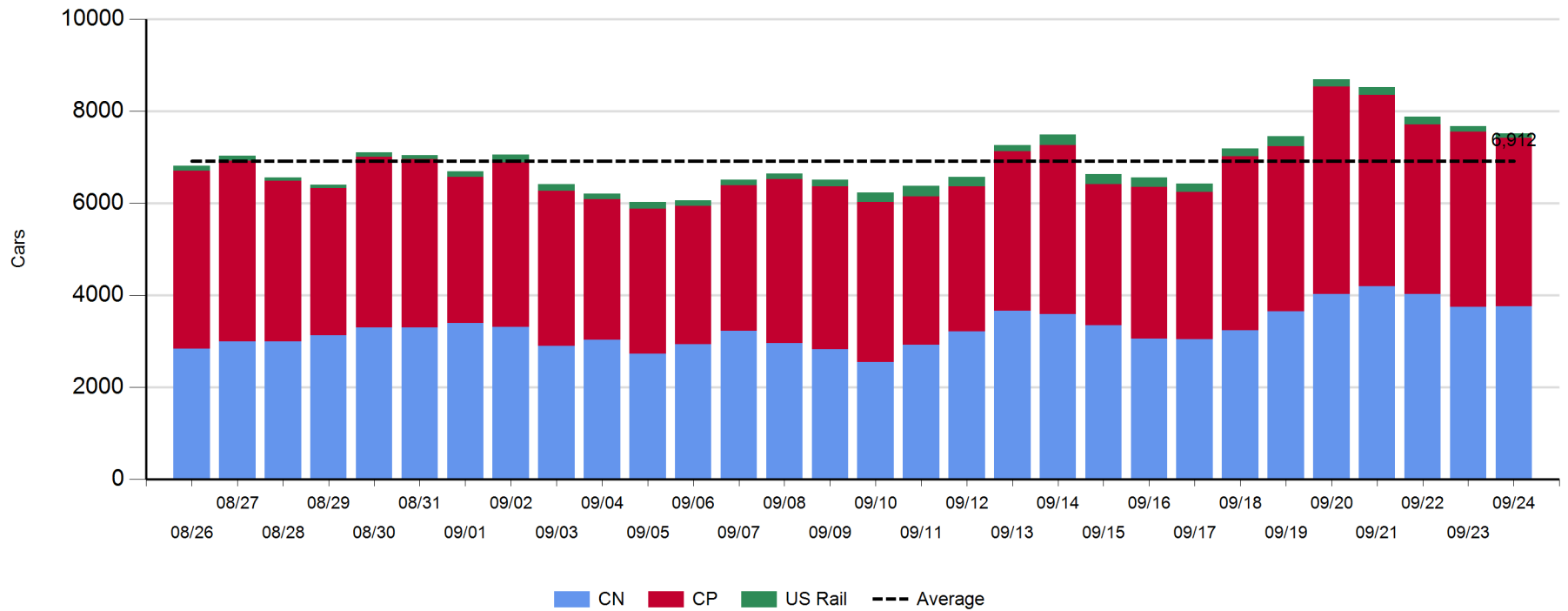
Daily Loads on Wheels - 9/24/2019

	E Canada	Prince Rupert	Thunder Bay	USA/MEX	Vancouver	Total
CN	539	664	398	201	1,956	3,758
CP	56		733	396	2,467	3,652
Short Line	3				15	18
US Rail				79		79
	598	664	1,131	676	4,438	7,507

Change in Loads on Wheels - Prior 24 Hours

	E Canada	Prince Rupert	Thunder Bay	USA/MEX	Vancouver	Total
CN	-22	-34	34	24	16	18
CP	-28		-56	61	-130	-153
Short Line	-3				-11	-14
US Rail				-16		-16
	-53	-34	-22	69	-125	-165

Loads on Wheels - Prior 30 Days

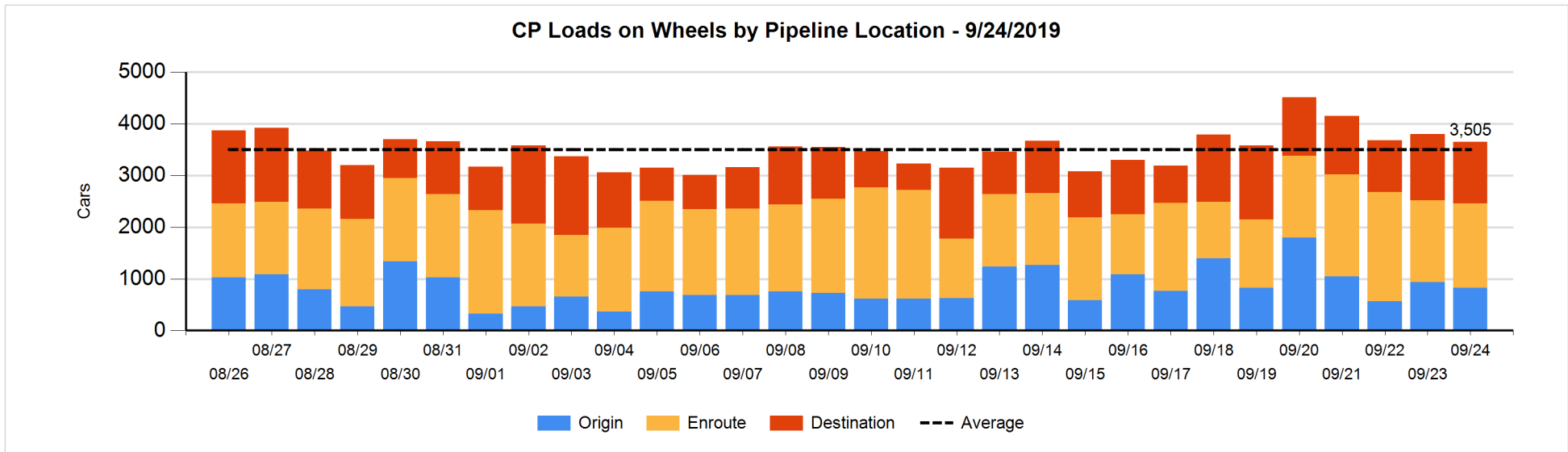
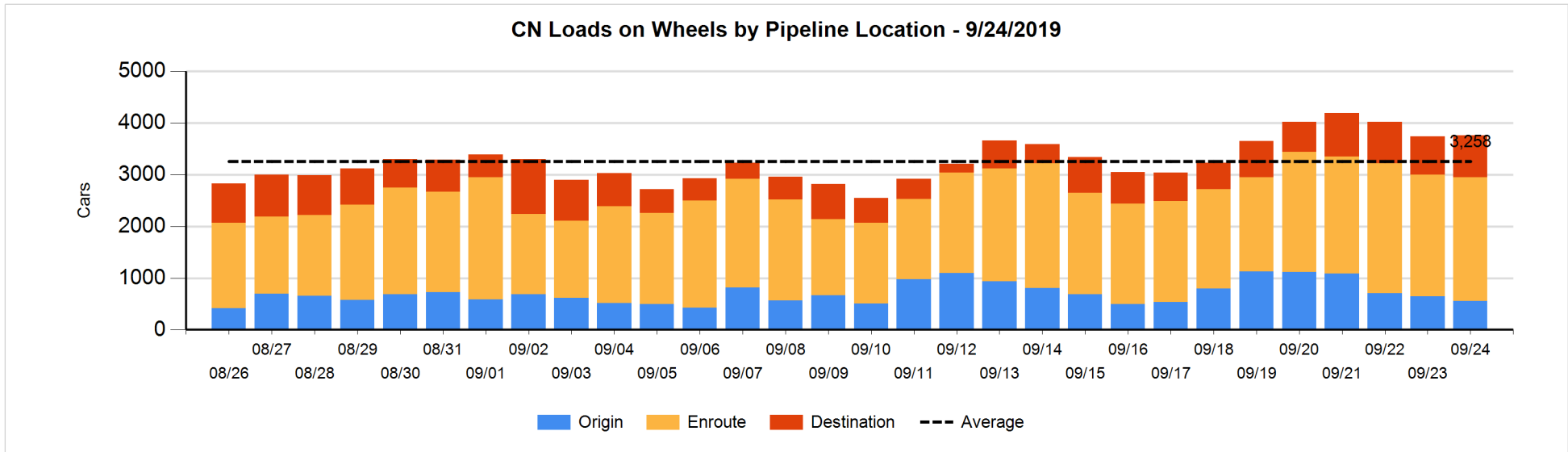


Daily Loads on Wheels By Pipeline Location - 9/24/2019

	E Canada	Prince Rupert	Thunder Bay	USA/MEX	Vancouver	Total
CN						
Origin		49	73	42	392	556
Enroute	525	470	292	142	963	2,392
Destination	14	145	33	17	601	810
	539	664	398	201	1,956	3,758
CP						
Origin			214	14	597	825
Enroute	54		31	382	1,168	1,635
Destination	2		488		702	1,192
	56		733	396	2,467	3,652
US Rail / Short Line						
Origin						
Enroute	3			44		47
Destination				35	15	50
	3			79	15	97

Change in Daily Loads on Wheels By Pipeline Location - Prior 24 Hours

	E Canada	Prince Rupert	Thunder Bay	USA/MEX	Vancouver	Total
CN						
Origin	-26	-170	73	35	-5	-93
Enroute	18	75	-4	-4	-40	45
Destination	-14	61	-35	-7	61	66
	-22	-34	34	24	16	18
CP						
Origin	-28		197	-48	-231	-110
Enroute	1		-309	109	246	47
Destination	-1		56		-145	-90
	-28		-56	61	-130	-153
US Rail / Short Line						
Origin						
Enroute	-3			-22		-25
Destination				6	-11	-5
	-3			-16	-11	-30

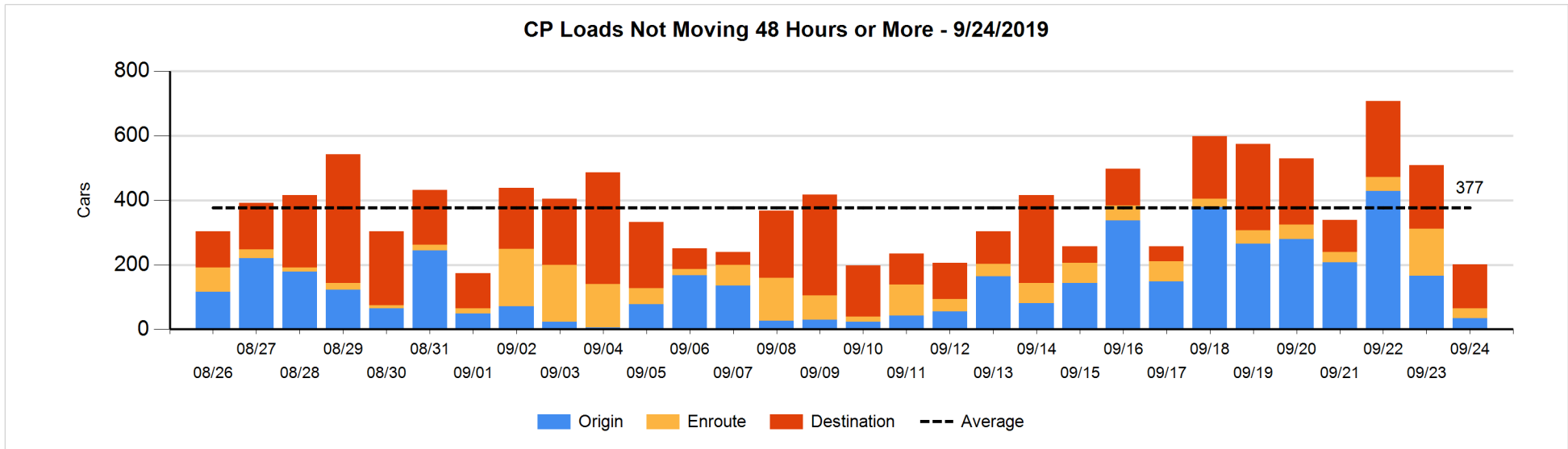
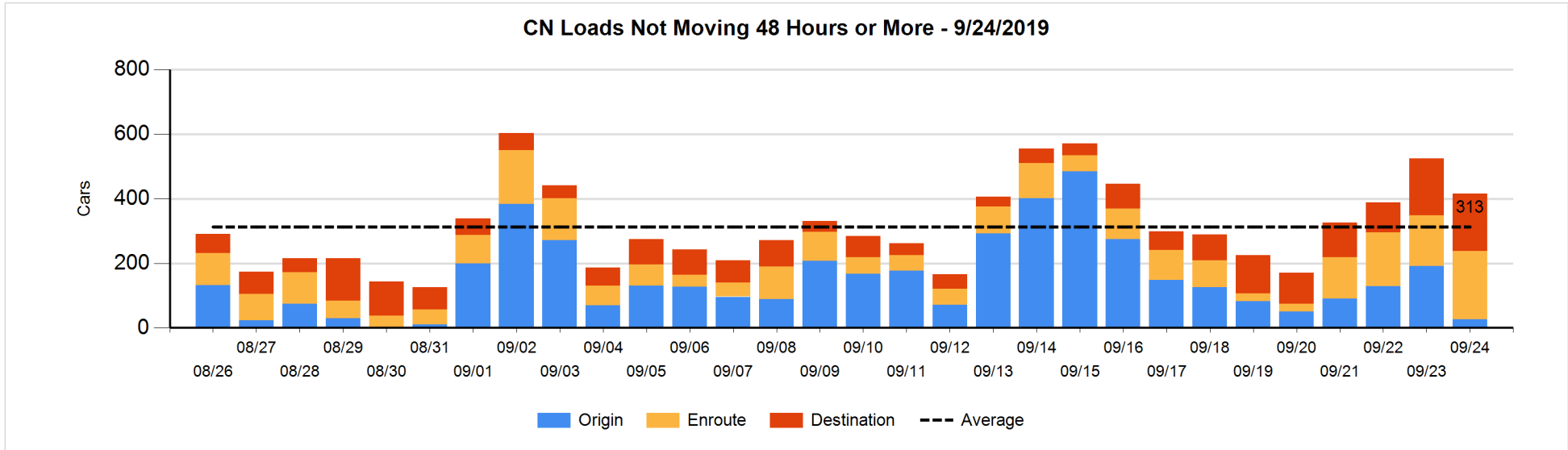


Loads Not Moving 48 Hours or More - 9/24/2019

	E Canada	Prince Rupert	Thunder Bay	USA/MEX	Vancouver	Total
CN						
Origin				2	24	26
Enroute	154	2	1	2	53	212
Destination	3	1	30	9	134	177
	157	3	31	13	211	415
CP						
Origin					34	34
Enroute	8		1	9	12	30
Destination			19		118	137
	8		20	9	164	201
US Rail / Short Line						
Origin						
Enroute				16		16
Destination				8	12	20
				24	12	36

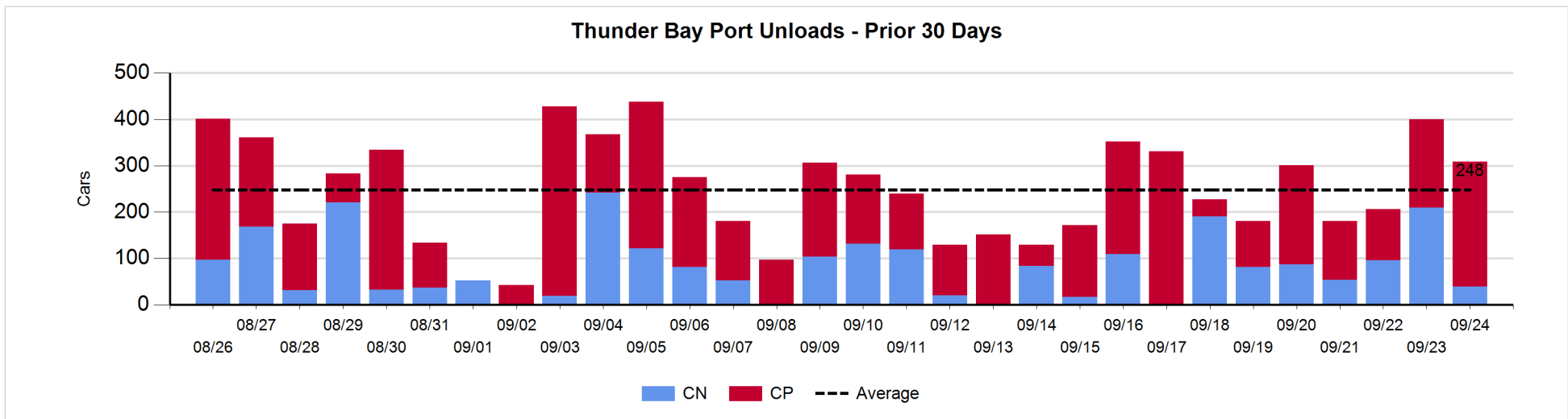
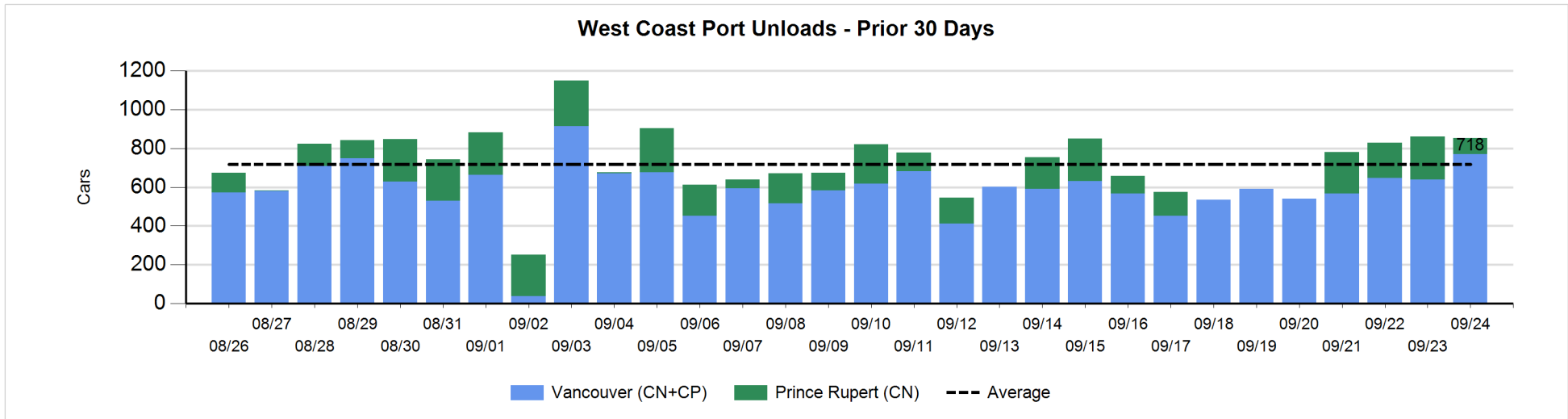
Change in Loads Not Moving 48 Hours or More - 9/24/2019

	E Canada	Prince Rupert	Thunder Bay	USA/MEX	Vancouver	Total
CN						
Origin		-100		0	-65	-165
Enroute	9	-2	-1	1	48	55
Destination	-12	0	5	-5	12	0
	-3	-102	4	-4	-5	-110
CP						
Origin					-131	-131
Enroute	-2		0	-112	-2	-116
Destination	-3		-61		4	-60
	-5		-61	-112	-129	-307
US Rail / Short Line						
Origin						
Enroute				-5		-5
Destination				-15	0	-15
				-20	0	-20



Port Unloads - 9/24/2019

	Prince Rupert	Vancouver	West Coast Total	Thunder Bay	Total
CN	83	264	347	39	386
CP		506	506	270	776
	83	770	853	309	1,162



Port Terminal Status

Vancouver

Daily Activity for 9/24/2019

	Cars Arrived	Cars Received in Interchange	Cars Delivered in Interchange	Cars Placed for Unloading	Loads on Wheels at Destination As of 9/24/2019
CN	305	111	198	317	601
CP	354	197	113	391	702
SRY		3		10	15

Port Unloads

	09/24	09/23	Week To Date	Last Week
CN	264	287	551	1,128
CP	506	351	857	2,774
SRY	12	9	21	36

Age Profile of Loaded Cars Waiting Placement for Unloading

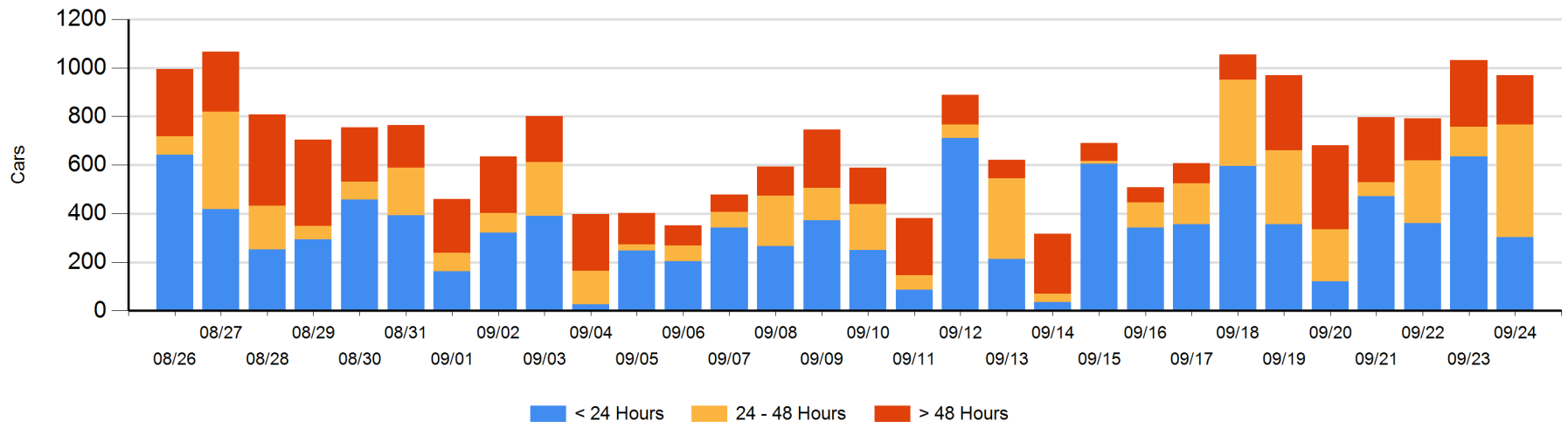
Today

	< 24 Hrs	24 - 48 Hrs	> 48-72 Hrs	> 72 Hrs	Total On Hand
CN	148	116	1	63	328
CP	155	347	49	91	642
SRY					0

Change in Last 24 Hours

	< 24 Hrs	24-48 Hrs	48 - 72 Hrs	> 72 Hrs
CN	-116	111	-57	29
CP	-217	231	-16	-26
SRY				

Loaded Cars on Hand Vancouver Waiting for Placement - Last 30 Days All Railways



Port Terminal Status

Prince Rupert

Daily Activity for 9/24/2019

	Cars Arrived	Cars Received in Interchange	Cars Delivered in Interchange	Cars Placed for Unloading	Loads on Wheels at Destination As of 9/24/2019
CN	146			144	145

Port Unloads

	09/24	09/23	Week To Date	Last Week
CN	83	223	306	608

Age Profile of Loaded Cars Waiting Placement for Unloading

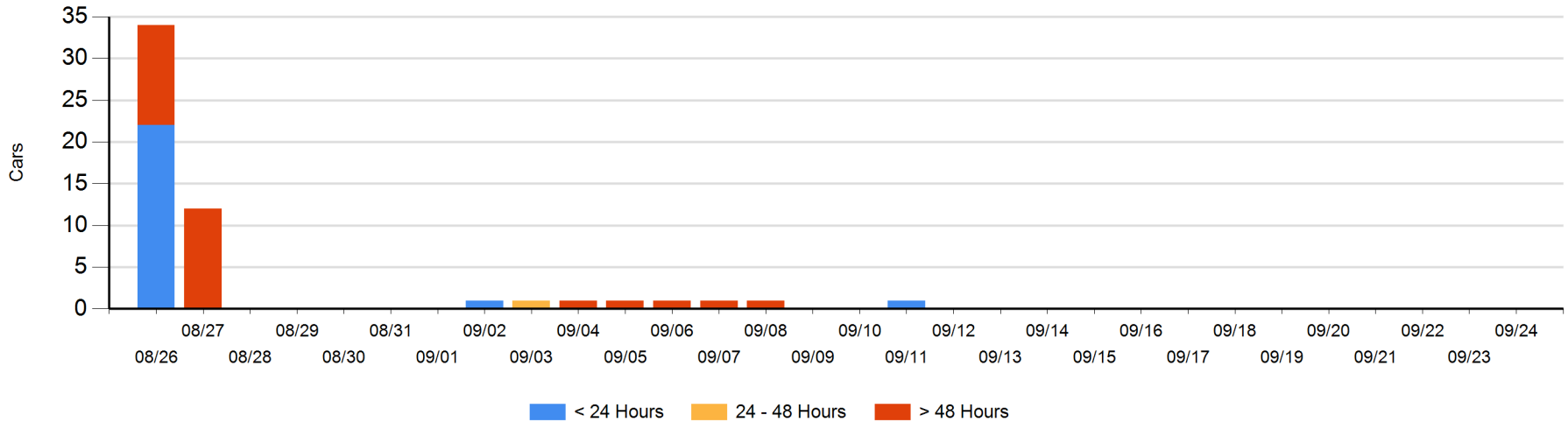
Today

	< 24 Hrs	24 - 48 Hrs	> 48-72 Hrs	> 72 Hrs	Total On Hand
CN					0

Change in Last 24 Hours

	< 24 Hrs	24-48 Hrs	48 - 72 Hrs	> 72 Hrs
CN				

Loaded Cars on Hand Prince Rupert Waiting for Placement - Last 30 Days All Railways



Port Terminal Status

Thunder Bay

Daily Activity for 9/24/2019

	Cars Arrived	Cars Received in Interchange	Cars Delivered in Interchange	Cars Placed for Unloading	Loads on Wheels at Destination As of 9/24/2019
CN	3				33
CP	326			240	488

Port Unloads

	09/24	09/23	Week To Date	Last Week
CN	39	209	248	619
CP	270	191	461	1,159

Age Profile of Loaded Cars Waiting Placement for Unloading

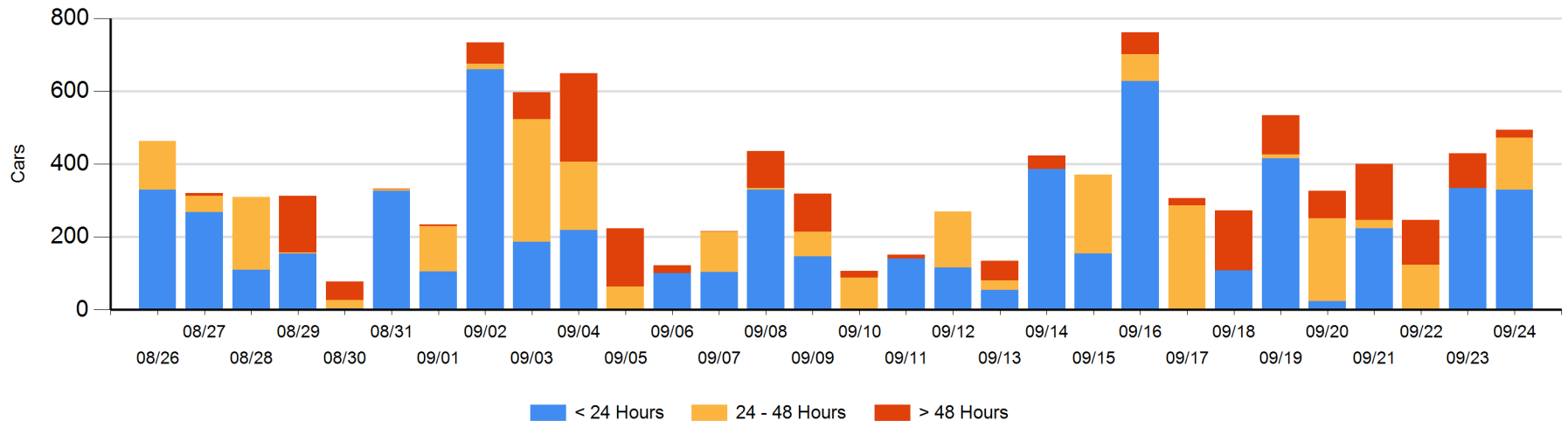
Today

	< 24 Hrs	24 - 48 Hrs	> 48-72 Hrs	> 72 Hrs	Total On Hand
CN	3			3	6
CP	326	143		19	488

Change in Last 24 Hours

	< 24 Hrs	24-48 Hrs	48 - 72 Hrs	> 72 Hrs
CN	3			0
CP	-8	143	-39	-34

Loaded Cars on Hand Thunder Bay Waiting for Placement - Last 30 Days All Railways



Measurement Definitions

Loads on Wheels	<p>Count of loaded rail cars including all rail cars that have been released loaded at origin and have not been reported by the railway as unloaded at destination.</p> <p>Counts include all rail cars (hopper cars and boxcars) moving within a pipeline.</p>
Loads Not Moving	<p>Loaded rail cars for which the railways have not reported a movement event for 48 hours or more whether the rail car is at origin, enroute or at destination.</p>
Port Unloads	<p>Count of rail cars reported by railways as unloaded at the western port destinations of Vancouver, Prince Rupert and Thunder Bay.</p> <p>Unload counts include all rail cars (hopper cars and boxcars) unloaded by all receivers including major port terminals, transloaders and other receivers.</p>
Cars Arrived	<p>Count of rail cars reported as arrived at the destination railway terminal.</p>
Cars Received in Interchange	<p>Count of rail cars received in interchange by each railway within a destination railway terminal. Interchange activity is tracked for the Vancouver and Thunder Bay pipelines as applicable.</p>
Cars Delivered in Interchange	<p>Count of rail cars delivered in interchange by each railway within a destination railway terminal. Interchange activity is tracked for the Vancouver and Thunder Bay pipelines as applicable.</p>
Cars Placed for Unloading	<p>Count of rail cars reported by the railways as placed loaded at the receiver's facility for unloading.</p>
Loads on Wheels at Destination	<p>Count of rail cars that remain under load within the destination railway terminal including rail cars that have been reported as placed for unloading but not yet reported as unloaded.</p>
Waiting Placement for Unloading	<p>Count of rail cars that have been reported as arrived at the destination railway terminal but not reported as placed for unloading by the railway.</p> <p>For the Ports of Vancouver, Prince Rupert and Thunder Bay the count of rail cars waiting placement for unloading is categorized by age – i.e. the elapsed time from arrival at destination to the current report date.</p>