

SPEED READ

- Loads on wheels declined overnight, reflecting a decline in both CN and CP volumes. On a net basis, volumes fell due to lower volumes in the Thunder Bay, Vancouver and E. Canada corridors offset by higher traffic in the USA/MEX and Prince Rupert corridors.
- Network fluidity deteriorated overnight, led by an increase in idle car counts on CP by 196% (+394) offset by a decline in idle car counts on CN by 42% (-174). The total count of cars for 4+ days on both railways decreased 35% (-104) overnight - now at 193 cars.
- Three days in Week 8 unloads now ahead of prior week's performance by more than 1,100 unloads, marking improved week over week performance across all three major ports - Vancouver, Thunder Bay and Prince Rupert.

Loads on Wheels

- Loads on wheels declined 4% (-278) overnight and have now decreased for the fifth consecutive day, due to lower volumes on both CN and CP - combined total at 7,230 and 4% above the trailing 30-day average.
- On a net basis, the decline in loads on wheels reflects lower volumes in the Thunder Bay, Vancouver and E. Canada corridors offset by higher traffic in the USA/MEX and Prince Rupert corridors.
- CN volumes declined 6% (-227) overnight, with reduced volumes in the Vancouver and Thunder Bay corridors offset by higher traffic in the USA/MEX, Prince Rupert and E. Canada corridors. System wide CN loads on wheels currently at 3,531 and 8% above the trailing 30-day average.
- CP volumes decreased slightly by 1% (-28) overnight, driven by a decline in traffic in the Thunder Bay and E. Canada corridors offset by an increase in volumes in the Vancouver and USA/MEX corridors. CP system wide loads on wheels currently at 3,624 and 4% above the trailing 30-day average.
- Vancouver presently at 4,313, decreased 3% (-125) overnight, now 8% above the trailing 30-day average.
- The Prince Rupert pipeline currently at 681, gained 3% (+17) overnight, and 18% below the trailing 30-day average.
- Thunder Bay volumes fell for the third consecutive day, down 20% (-227) overnight - now at 904 and 21% below the trailing 30-day average, with 61% of traffic moving on CP.

Hopper Car Rationing

- No hopper cars were rationed by either CN or CP in week 6.

Loads Not Moving

- **The count of cars not moving for 48+ hours increased 36% (+220) overnight, reflecting higher counts on CP offset by reduced counts on CN. Idle car counts currently at 836 and 20% above the trailing 30-day average.**
- CN
 - **The count of idle cars for 48+ hours decreased 42% (-174) overnight - now at 241 cars.**
 - The number of cars idle for 4+ days decreased 43% (-84) overnight - currently at 113 cars.
 - The count of cars not moving for 7+ days fell 44% (-14) overnight - now at 18 cars.
 - Vancouver represents 49% of all idle cars.
 - In total 2% of all idle cars are dwelling at origin locations.
- CP
 - **CP idle car counts for 48+ hours gained significantly by 196% (+394) overnight - currently at 595 cars.**
 - The number of cars idle for 4+ days fell 20% (-20) overnight - currently at 80 cars.

- The number of cars idle for 7+ days declined 12% (-6) overnight - now at 43 cars.
- Vancouver accounts for 97% of all idle cars.
- In total 34% of all idle cars are dwelling at origin locations.

Port Performance

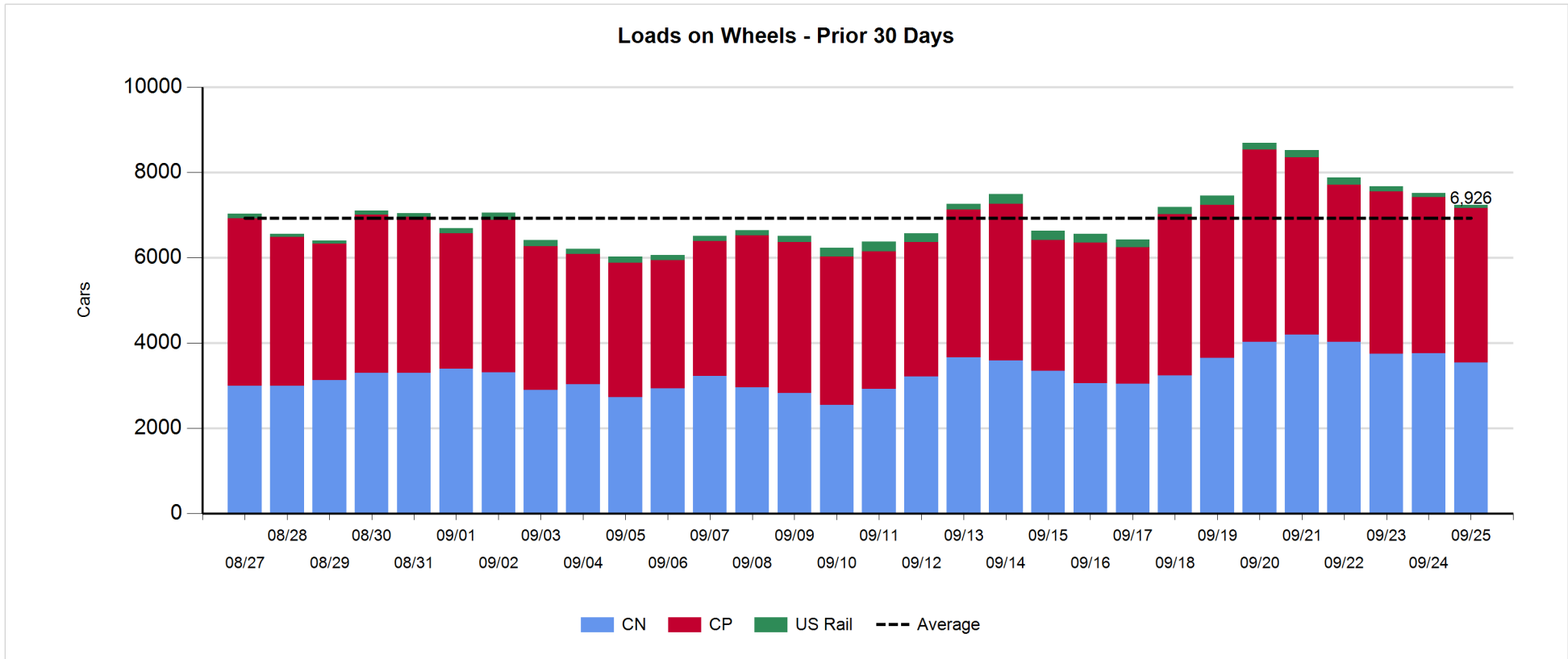
- CN and CP reported a total of 1,353 cars unloaded at the three major ports, now 39% above the trailing 30-day average. Three days in Week 8 unloads now ahead of last week's pace by more than 1,100 unloads, marking higher unloads across all three major ports - Vancouver, Thunder Bay and Prince Rupert.
- Vancouver
 - 807 unloads reported by CN and CP at the Port of Vancouver; CN - 350 and CP - 457. Three days in Week 8 unloads are tracking ahead of last week's performance by more than 650 unloads.
 - There are more than 1,000 cars on site at Vancouver with 500 cars arriving at the port in the last 24 hours.
 - CN and CP have 1,100 cars in British Columbia en route to Vancouver, with around 400 cars at Kamloops and west, and 76% of traffic moving on CP.
- Prince Rupert
 - Prince Rupert reported 187 unloads, now ahead of last week's unloads after three days by around 300 unloads.
 - Loads on wheels now below 1,000 cars - now at 681 cars.
 - There are 200 cars west of Jasper en route to Prince Rupert.
 - There are 2 cars on site at Prince Rupert with 50 cars arriving at the port in the last 24 hours.
- Thunder Bay
 - 359 unloads were reported at Thunder Bay yesterday. Three days in Week 8 unloads are tracking ahead of last week's pace by 150 unloads.
 - There are 450 cars on site at Thunder Bay with 300 cars arriving at the port in the prior 24 hours.
 - There are fewer than 150 cars en route to Thunder Bay from Winnipeg and east.

Daily Loads on Wheels - 9/25/2019

	E Canada	Prince Rupert	Thunder Bay	USA/MEX	Vancouver	Total
CN	541	681	350	233	1,726	3,531
CP	45		554	447	2,578	3,624
Short Line					9	9
US Rail				66		66
	586	681	904	746	4,313	7,230

Change in Loads on Wheels - Prior 24 Hours

	E Canada	Prince Rupert	Thunder Bay	USA/MEX	Vancouver	Total
CN	2	17	-48	32	-230	-227
CP	-11		-179	51	111	-28
Short Line	-4				-6	-10
US Rail				-13		-13
	-13	17	-227	70	-125	-278

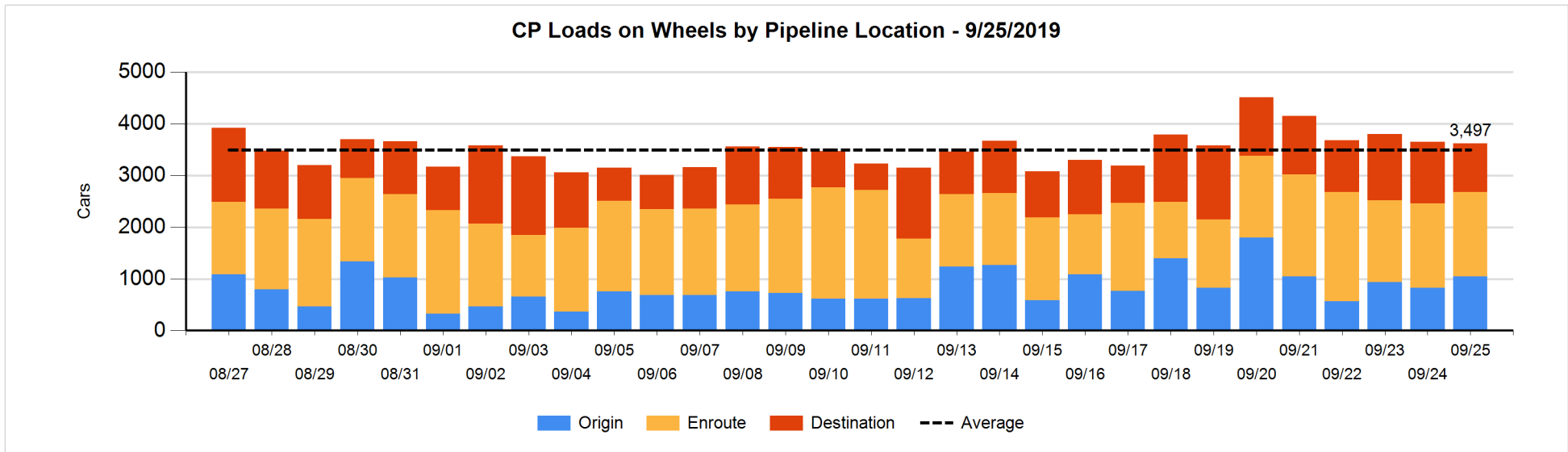
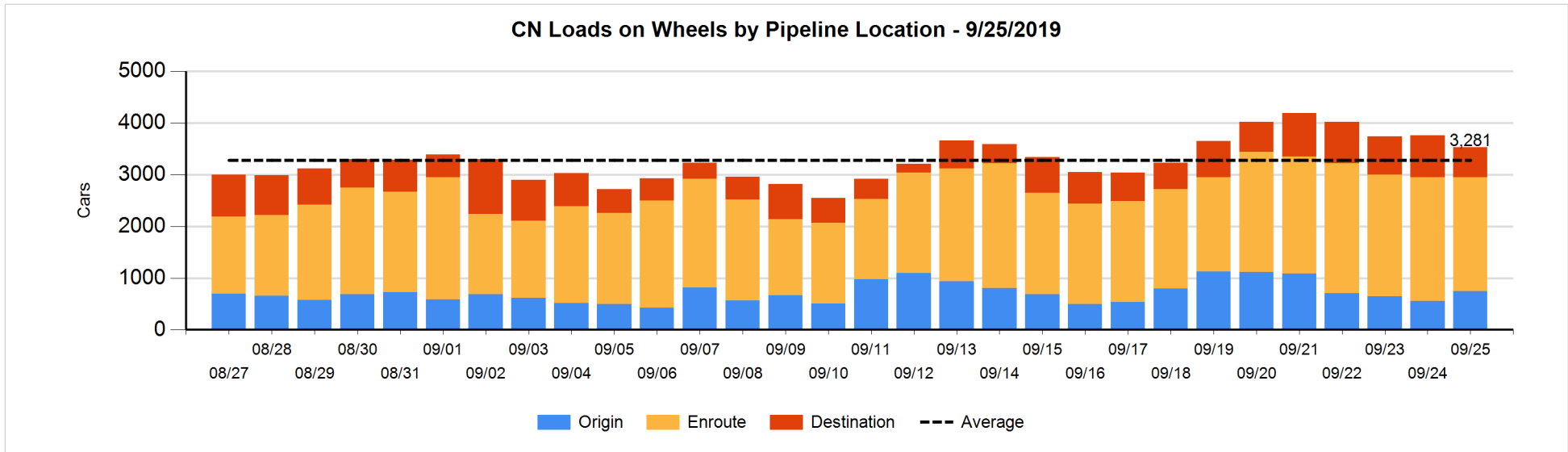


Daily Loads on Wheels By Pipeline Location - 9/25/2019

	E Canada	Prince Rupert	Thunder Bay	USA/MEX	Vancouver	Total
CN						
Origin	2	253	19	68	408	750
Enroute	510	426	77	143	1,048	2,204
Destination	29	2	254	22	270	577
	541	681	350	233	1,726	3,531
CP						
Origin			224	125	697	1,046
Enroute	45		131	322	1,132	1,630
Destination			199		749	948
	45		554	447	2,578	3,624
US Rail / Short Line						
Origin						
Enroute				51		51
Destination				15	9	24
				66	9	75

Change in Daily Loads on Wheels By Pipeline Location - Prior 24 Hours

	E Canada	Prince Rupert	Thunder Bay	USA/MEX	Vancouver	Total
CN						
Origin	2	204	-54	26	16	194
Enroute	-15	-44	-215	1	85	-188
Destination	15	-143	221	5	-331	-233
	2	17	-48	32	-230	-227
CP						
Origin			10	111	100	221
Enroute	-9		100	-60	-36	-5
Destination	-2		-289		47	-244
	-11		-179	51	111	-28
US Rail / Short Line						
Origin						
Enroute	-4			7		3
Destination				-20	-6	-26
	-4			-13	-6	-23

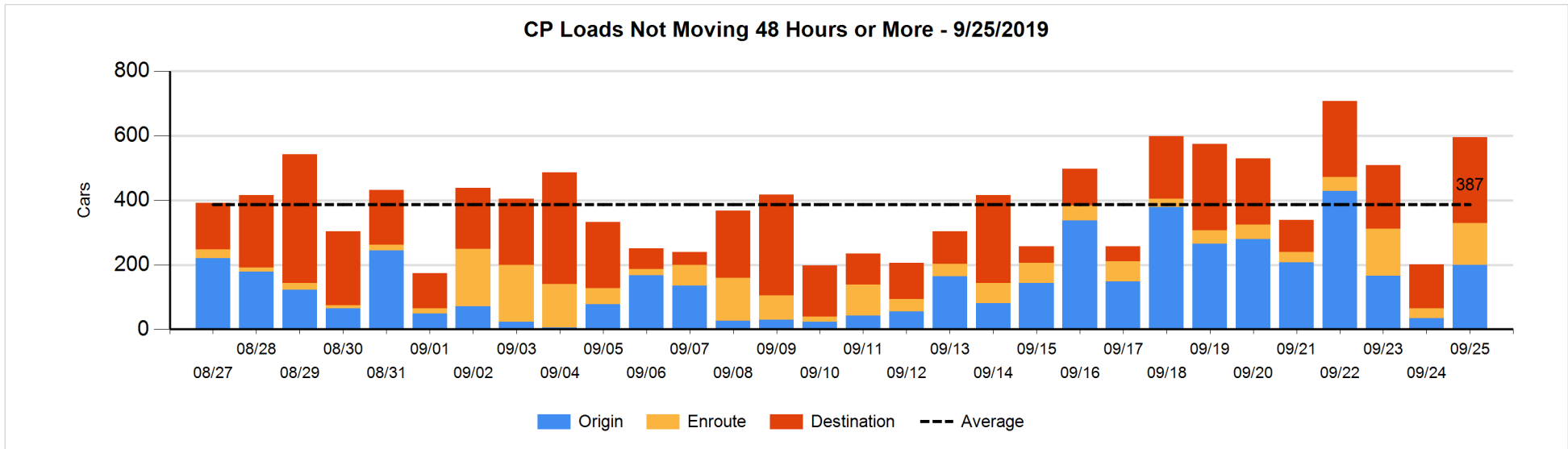
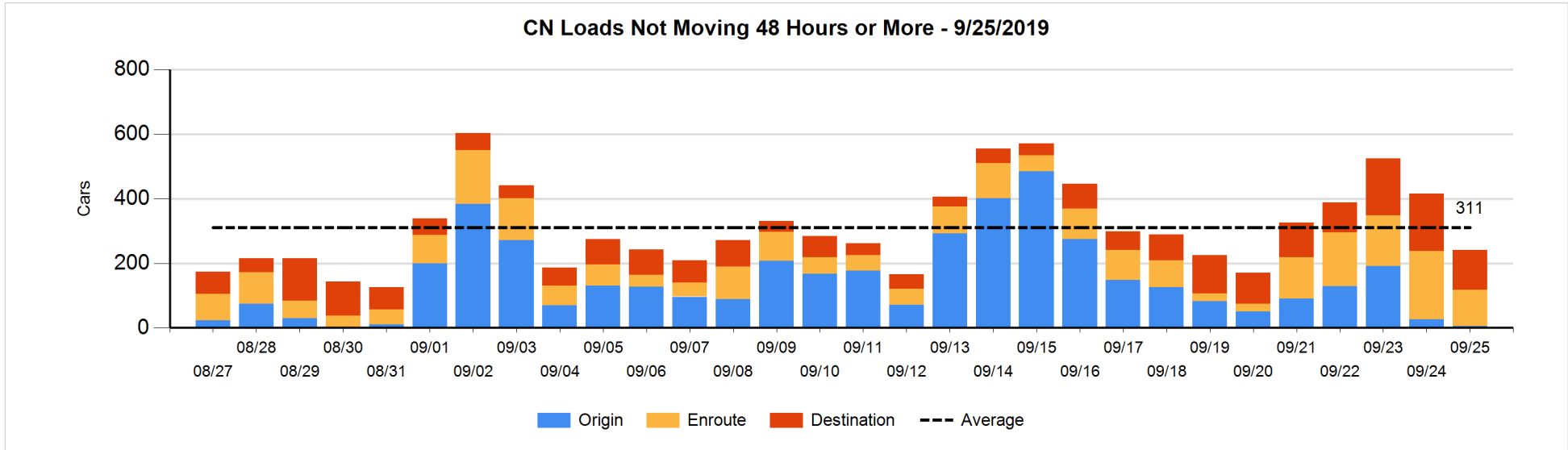


Loads Not Moving 48 Hours or More - 9/25/2019

	E Canada	Prince Rupert	Thunder Bay	USA/MEX	Vancouver	Total
CN						
Origin				2	4	6
Enroute	104	2	1	1	3	111
Destination	4			10	110	124
	108	2	1	13	117	241
CP						
Origin					200	200
Enroute	1		1	7	120	129
Destination			6		260	266
	1		7	7	580	595
US Rail / Short Line						
Origin						
Enroute				16		16
Destination				12	5	17
				28	5	33

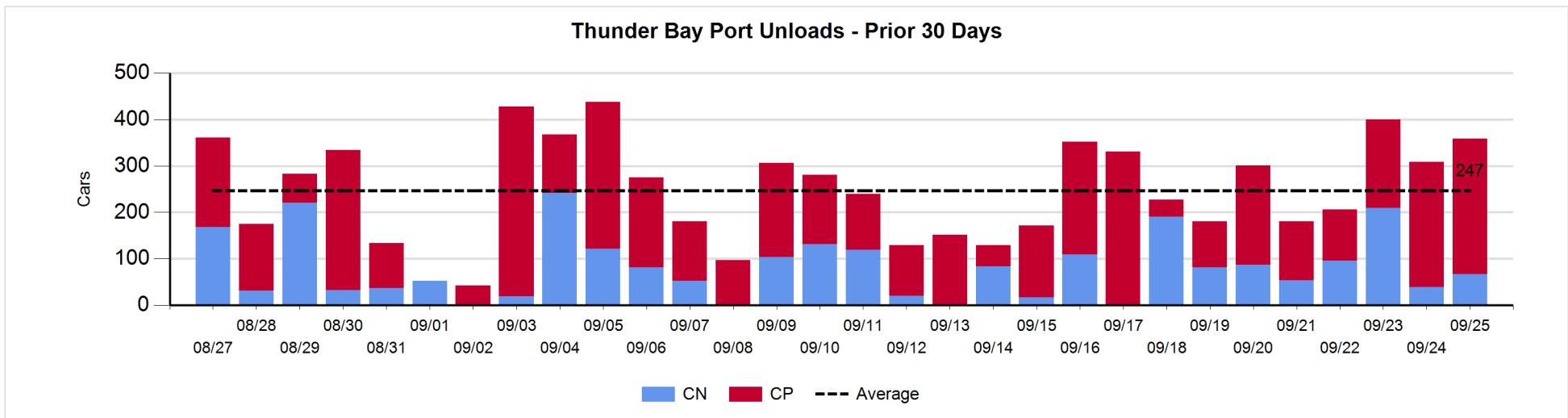
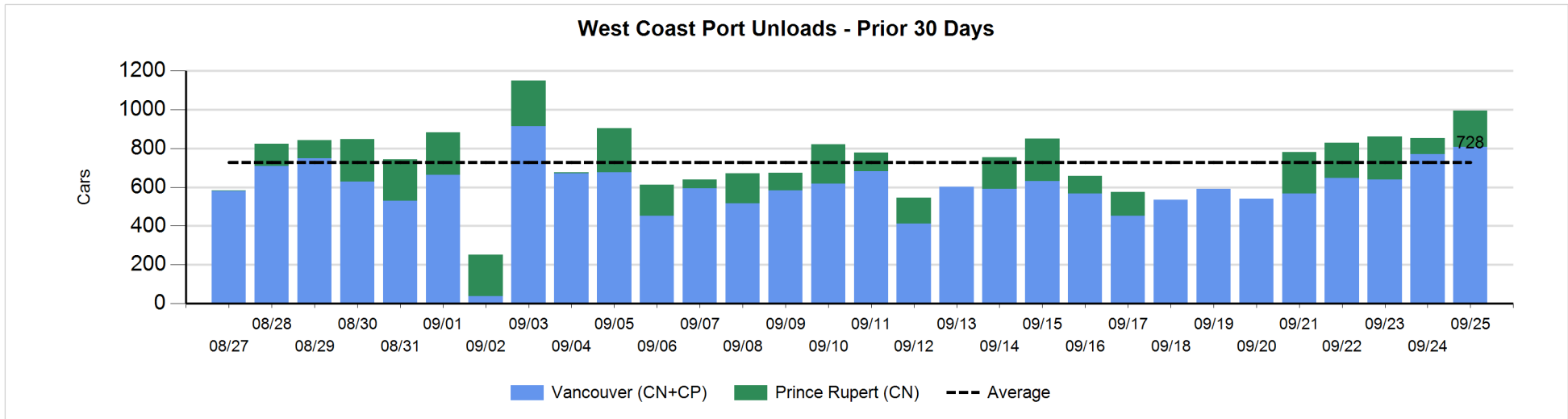
Change in Loads Not Moving 48 Hours or More - 9/25/2019

	E Canada	Prince Rupert	Thunder Bay	USA/MEX	Vancouver	Total
CN						
Origin				0	-20	-20
Enroute	-50	0	0	-1	-50	-101
Destination	1	-1	-30	1	-24	-53
	-49	-1	-30	0	-94	-174
CP						
Origin					166	166
Enroute	-7		0	-2	108	99
Destination			-13		142	129
	-7		-13	-2	416	394
US Rail / Short Line						
Origin						
Enroute				0		0
Destination				4	-7	-3
				4	-7	-3



Port Unloads - 9/25/2019

	Prince Rupert	Vancouver	West Coast Total	Thunder Bay	Total
CN	187	350	537	67	604
CP		457	457	292	749
	187	807	994	359	1,353



Port Terminal Status

Vancouver

Daily Activity for 9/25/2019

	Cars Arrived	Cars Received in Interchange	Cars Delivered in Interchange	Cars Placed for Unloading	Loads on Wheels at Destination As of 9/25/2019
CN	144	37	210	223	271
CP	361	210	39	498	749
SRY	1	2		9	9

Port Unloads

	09/25	09/24	Week To Date	Last Week
CN	350	264	901	1,128
CP	457	506	1,314	2,774
SRY	9	12	30	36

Age Profile of Loaded Cars Waiting Placement for Unloading

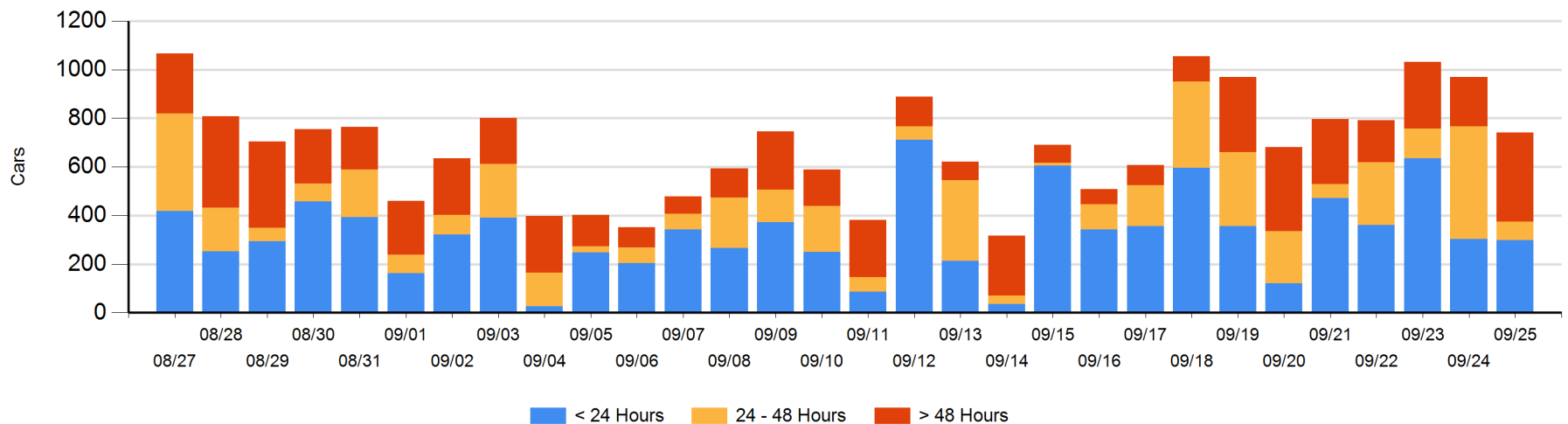
Today

	< 24 Hrs	24 - 48 Hrs	> 48-72 Hrs	> 72 Hrs	Total On Hand
CN	96	30	108	55	289
CP	202	47	158	45	452
SRY					0

Change in Last 24 Hours

	< 24 Hrs	24-48 Hrs	48 - 72 Hrs	> 72 Hrs
CN	-54	-86	107	-8
CP	49	-300	109	-46
SRY				

Loaded Cars on Hand Vancouver Waiting for Placement - Last 30 Days All Railways



Port Terminal Status

Prince Rupert

Daily Activity for 9/25/2019

	Cars Arrived	Cars Received in Interchange	Cars Delivered in Interchange	Cars Placed for Unloading	Loads on Wheels at Destination As of 9/25/2019
CN	42			44	2

Port Unloads

	09/25	09/24	Week To Date	Last Week
CN	187	83	493	608

Age Profile of Loaded Cars Waiting Placement for Unloading

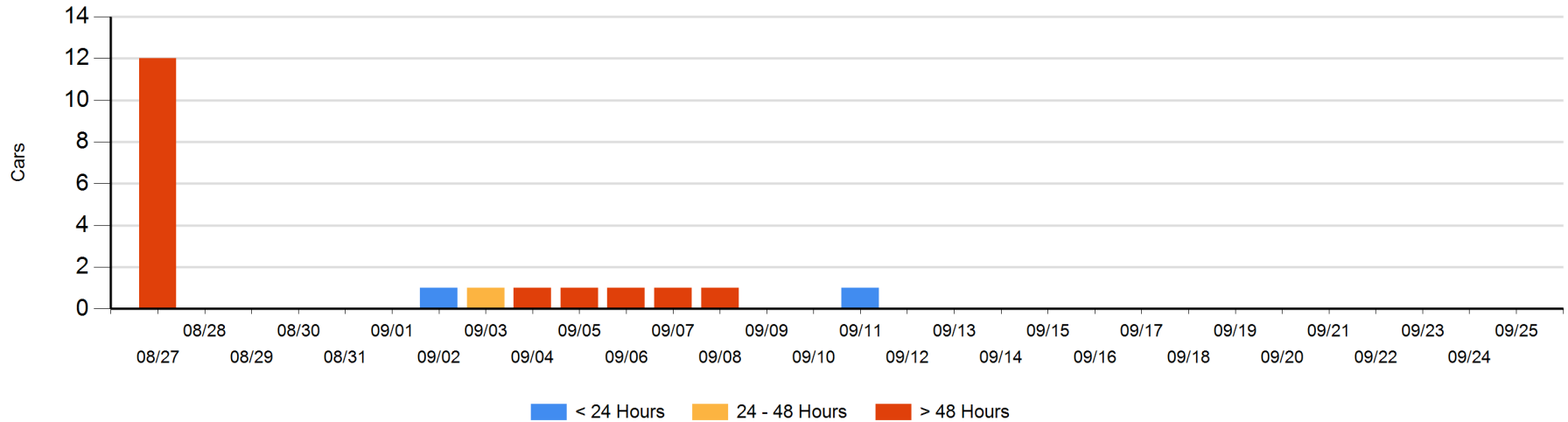
Today

	< 24 Hrs	24 - 48 Hrs	> 48-72 Hrs	> 72 Hrs	Total On Hand
CN					0

Change in Last 24 Hours

	< 24 Hrs	24-48 Hrs	48 - 72 Hrs	> 72 Hrs
CN				

Loaded Cars on Hand Prince Rupert Waiting for Placement - Last 30 Days All Railways



Port Terminal Status

Thunder Bay

Daily Activity for 9/25/2019

	Cars Arrived	Cars Received in Interchange	Cars Delivered in Interchange	Cars Placed for Unloading	Loads on Wheels at Destination As of 9/25/2019
CN	288			152	254
CP	3			307	199

Port Unloads

	09/25	09/24	Week To Date	Last Week
CN	67	39	315	619
CP	292	270	753	1,159

Age Profile of Loaded Cars Waiting Placement for Unloading

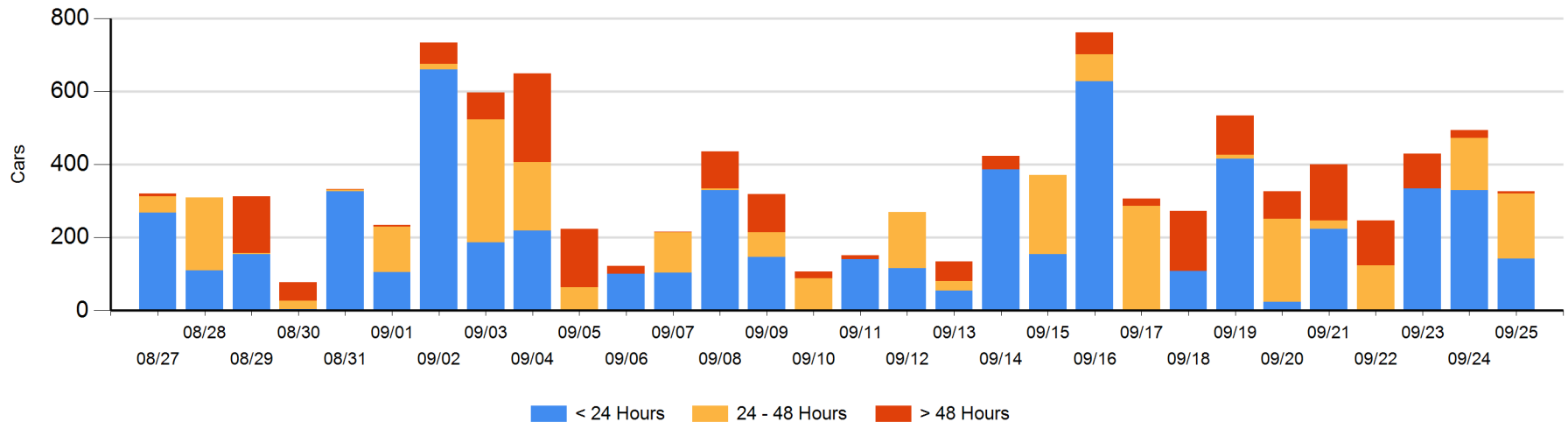
Today

	< 24 Hrs	24 - 48 Hrs	> 48-72 Hrs	> 72 Hrs	Total On Hand
CN	139	3			142
CP	3	175	6		184

Change in Last 24 Hours

	< 24 Hrs	24-48 Hrs	48 - 72 Hrs	> 72 Hrs
CN	136	3		-3
CP	-323	32	6	-19

Loaded Cars on Hand Thunder Bay Waiting for Placement - Last 30 Days All Railways



Measurement Definitions

Loads on Wheels	<p>Count of loaded rail cars including all rail cars that have been released loaded at origin and have not been reported by the railway as unloaded at destination.</p> <p>Counts include all rail cars (hopper cars and boxcars) moving within a pipeline.</p>
Loads Not Moving	<p>Loaded rail cars for which the railways have not reported a movement event for 48 hours or more whether the rail car is at origin, enroute or at destination.</p>
Port Unloads	<p>Count of rail cars reported by railways as unloaded at the western port destinations of Vancouver, Prince Rupert and Thunder Bay.</p> <p>Unload counts include all rail cars (hopper cars and boxcars) unloaded by all receivers including major port terminals, transloaders and other receivers.</p>
Cars Arrived	<p>Count of rail cars reported as arrived at the destination railway terminal.</p>
Cars Received in Interchange	<p>Count of rail cars received in interchange by each railway within a destination railway terminal. Interchange activity is tracked for the Vancouver and Thunder Bay pipelines as applicable.</p>
Cars Delivered in Interchange	<p>Count of rail cars delivered in interchange by each railway within a destination railway terminal. Interchange activity is tracked for the Vancouver and Thunder Bay pipelines as applicable.</p>
Cars Placed for Unloading	<p>Count of rail cars reported by the railways as placed loaded at the receiver's facility for unloading.</p>
Loads on Wheels at Destination	<p>Count of rail cars that remain under load within the destination railway terminal including rail cars that have been reported as placed for unloading but not yet reported as unloaded.</p>
Waiting Placement for Unloading	<p>Count of rail cars that have been reported as arrived at the destination railway terminal but not reported as placed for unloading by the railway.</p> <p>For the Ports of Vancouver, Prince Rupert and Thunder Bay the count of rail cars waiting placement for unloading is categorized by age – i.e. the elapsed time from arrival at destination to the current report date.</p>