

SPEED READ

- Loads on wheels increased overnight, marking an increase in both CN and CP volumes. On a net basis, volumes increased due to higher traffic in the Vancouver, Prince Rupert and Thunder Bay corridors offset by lower traffic in the E. Canada and USA/MEX corridors.
- Network fluidity improved overnight, led by a decline in idle car counts on CP by 32% (-223) offset by an increase in idle car counts on CN by 1% (+3). The total count of cars for 4+ days on both railways decreased 27% (-52) overnight - now at 141 cars.
- Four days in Week 8 unloads now ahead of prior week's performance by more than 1,000 unloads, marking improved week over week performance across all three major ports - Vancouver, Thunder Bay and Prince Rupert.

=====

Loads on Wheels

- Loads on wheels increased 7% (+532) overnight, due to higher traffic on both CN and CP - combined total at 7,986 and 15% above the trailing 30-day average.
- On a net basis, the rise in loads on wheels reflects higher traffic in the Vancouver, Prince Rupert and Thunder Bay corridors offset by lower traffic in the E. Canada and USA/MEX corridors.
- CN volumes increased marginally by 1% (+49) overnight, with higher traffic in the Prince Rupert, USA/MEX and Thunder Bay corridors offset by lower volumes in the E. Canada and Vancouver corridors. System wide CN loads on wheels currently at 3,582 and 8% above the trailing 30-day average.
- CP volumes increased 13% (+487) overnight, driven by an increase in traffic in the Vancouver and Thunder Bay corridors offset by a decline in traffic in the USA/MEX and E. Canada corridors. CP system wide loads on wheels currently at 4,333 and 23% above the trailing 30-day average.
- Vancouver now at 4,867, gained 7% (+331) overnight, now 21% above the trailing 30-day average.
- The Prince Rupert pipeline currently at 894, gained 31% (+213) overnight, and 9% above the trailing 30-day average.
- Thunder Bay volumes increased 13% (+122) overnight - now at 1,026 and 10% below the trailing 30-day average, with 66% of traffic moving on CP.

Hopper Car Rationing

- No hopper cars were rationed by either CN or CP in week 7.

Loads Not Moving

- **The count of cars not moving for 48+ hours decreased 23% (-220) overnight, marking reduced counts on CP offset by nominally higher counts on CN. Idle car counts currently at 726 and 3% above the trailing 30-day average.**
- CN
 - **The count of idle cars for 48+ hours increased marginally by 1% (+3) overnight - presently at 244 cars.**
 - The number of cars idle for 4+ days declined 29% (-33) overnight and have now decreased for the third consecutive day - currently at 80 cars.
 - The count of cars not moving for 7+ days increased 322% (+58) overnight - presently at 76 cars.
 - Vancouver represents 65% of all idle cars.
 - In total 23% of all idle cars are dwelling at origin locations.
- CP
 - **CP idle car counts for 48+ hours decreased 32% (-223) overnight - now at 482 cars.**
 - The number of cars idle for 4+ days declined 24% (-19) overnight - currently at 61 cars.
 - The number of cars idle for 7+ days decreased 19% (-8) overnight - currently at 35 cars.

- Vancouver accounts for 89% of all idle cars.
- In total 17% of all idle cars are dwelling at origin locations.

Port Performance

- CN and CP reported a total of 739 cars unloaded at the three major ports, now 24% below the trailing 30-day average. Four days in Week 8 unloads now ahead of last week's pace by more than 1,000 unloads, marking higher unloads across all three major ports - Vancouver, Thunder Bay and Prince Rupert.
- Vancouver
 - 539 unloads reported by CN and CP at the Port of Vancouver; CN - 203 and CP - 336. Four days in Week 8 unloads are tracking ahead of last week's performance by more than 600 unloads.
 - There are more than 950 cars on site at Vancouver with more than 450 cars arriving at the port in the last 24 hours.
 - CN and CP have 950 cars in British Columbia en route to Vancouver, with more than 650 cars at Kamloops and west, and 61% of traffic moving on CP.
- Prince Rupert
 - Prince Rupert reported zero unloads, now ahead of last week's unloads after four days by less than 300 unloads.
 - Loads on wheels now below 1,000 cars - currently at 894 cars.
 - There are more than 150 cars west of Jasper en route to Prince Rupert.
 - There are 30 cars on site at Prince Rupert with 28 cars arriving at the port in the last 24 hours.
- Thunder Bay
 - 200 unloads were reported at Thunder Bay yesterday. Four days in Week 8 unloads are tracking ahead of last week's pace by more than 150 unloads.
 - There are more than 350 cars on site at Thunder Bay with more than 100 cars arriving at the port in the prior 24 hours.
 - There are around 100 cars en route to Thunder Bay from Winnipeg and east.

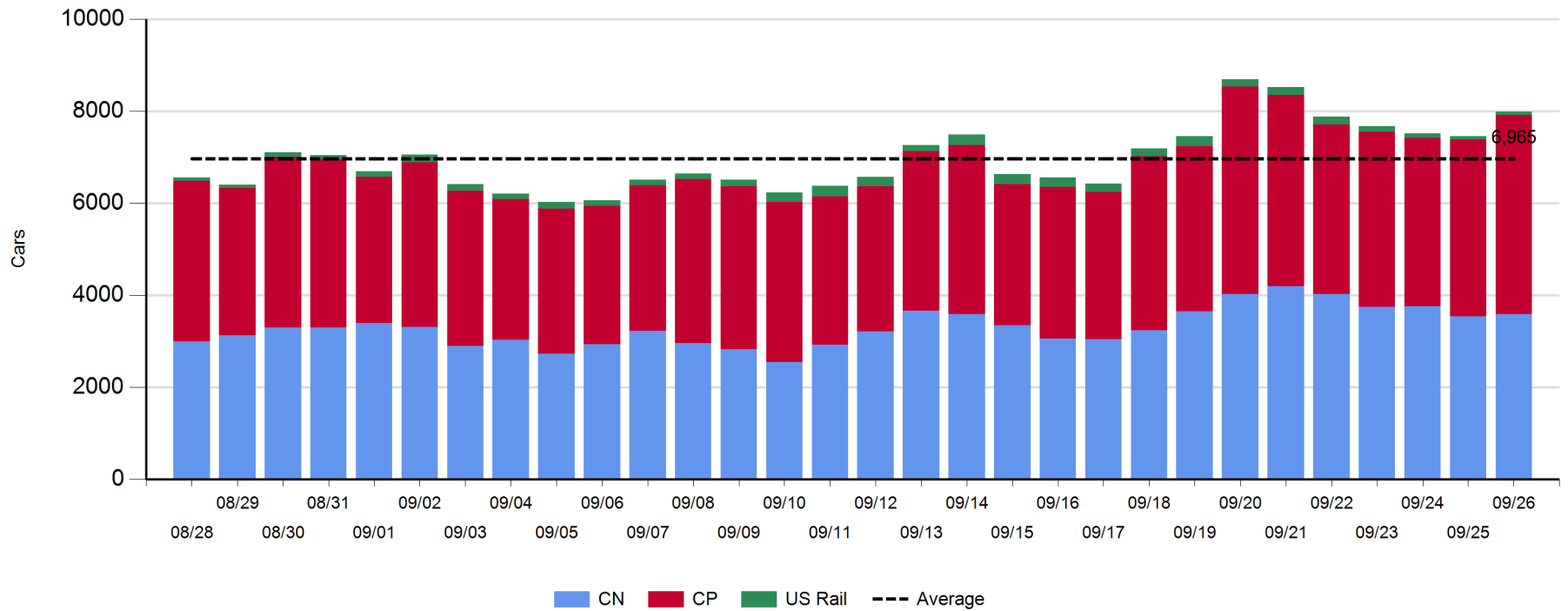
Daily Loads on Wheels - 9/26/2019

	E Canada	Prince Rupert	Thunder Bay	USA/MEX	Vancouver	Total
CN	426	894	353	239	1,670	3,582
CP	42		673	429	3,189	4,333
Short Line	1				8	9
US Rail				62		62
	469	894	1,026	730	4,867	7,986

Change in Loads on Wheels - Prior 24 Hours

	E Canada	Prince Rupert	Thunder Bay	USA/MEX	Vancouver	Total
CN	-115	213	3	5	-57	49
CP	-3		119	-18	389	487
Short Line	1				-1	0
US Rail				-4		-4
	-117	213	122	-17	331	532

Loads on Wheels - Prior 30 Days

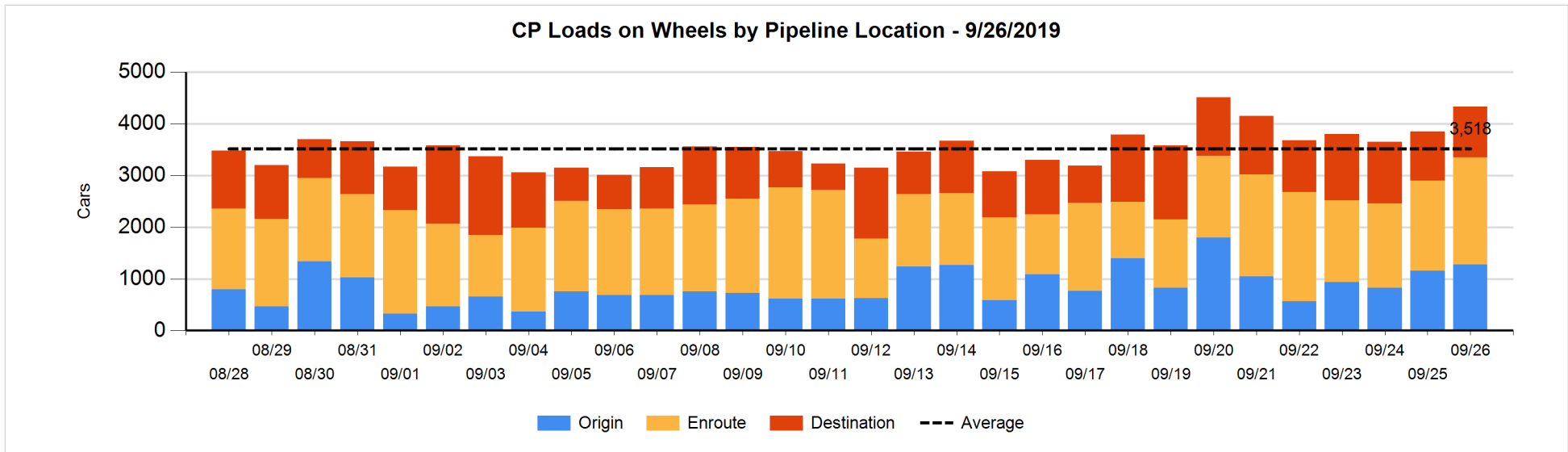
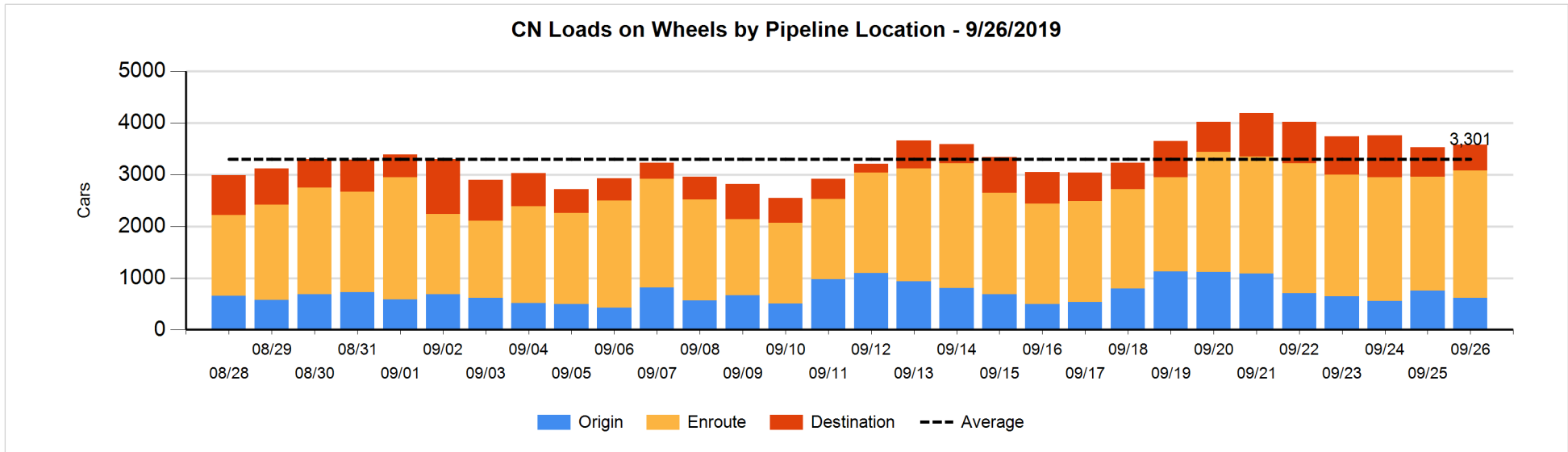


Daily Loads on Wheels By Pipeline Location - 9/26/2019

	E Canada	Prince Rupert	Thunder Bay	USA/MEX	Vancouver	Total
CN						
Origin	12	213	74	19	296	614
Enroute	320	651	96	200	1,201	2,468
Destination	94	30	183	20	173	500
	426	894	353	239	1,670	3,582
CP						
Origin			113	125	1,042	1,280
Enroute	40		367	298	1,364	2,069
Destination	2		193	6	783	984
	42		673	429	3,189	4,333
US Rail / Short Line						
Origin	1					1
Enroute				38		38
Destination				24	8	32
	1			62	8	71

Change in Daily Loads on Wheels By Pipeline Location - Prior 24 Hours

	E Canada	Prince Rupert	Thunder Bay	USA/MEX	Vancouver	Total
CN						
Origin	10	-40	55	-50	-112	-137
Enroute	-190	225	19	57	152	263
Destination	65	28	-71	-2	-97	-77
	-115	213	3	5	-57	49
CP						
Origin			1	0	123	124
Enroute	-5		124	-24	232	327
Destination	2		-6	6	34	36
	-3		119	-18	389	487
US Rail / Short Line						
Origin	1					1
Enroute				-13		-13
Destination				9	-1	8
	1			-4	-1	-4

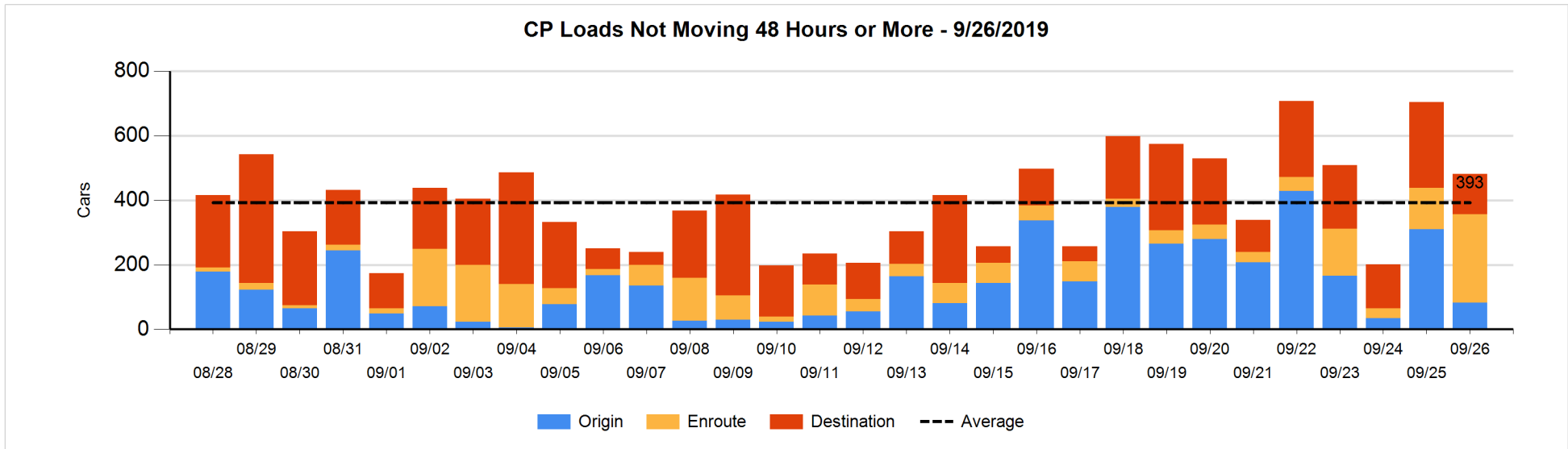
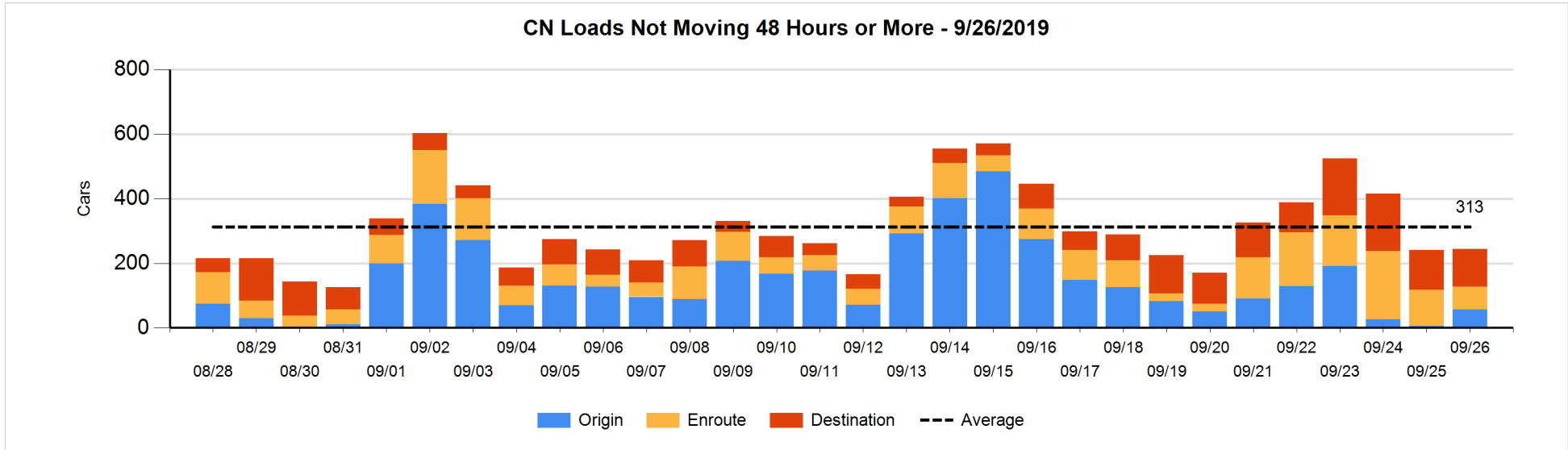


Loads Not Moving 48 Hours or More - 9/26/2019

	E Canada	Prince Rupert	Thunder Bay	USA/MEX	Vancouver	Total
CN						
Origin				7	50	57
Enroute	62	2	1	1	4	70
Destination	3		3	7	104	117
	65	2	4	15	158	244
CP						
Origin				1	82	83
Enroute	4		9	8	252	273
Destination			29		97	126
	4		38	9	431	482
US Rail / Short Line						
Origin						
Enroute				22		22
Destination				13	4	17
				35	4	39

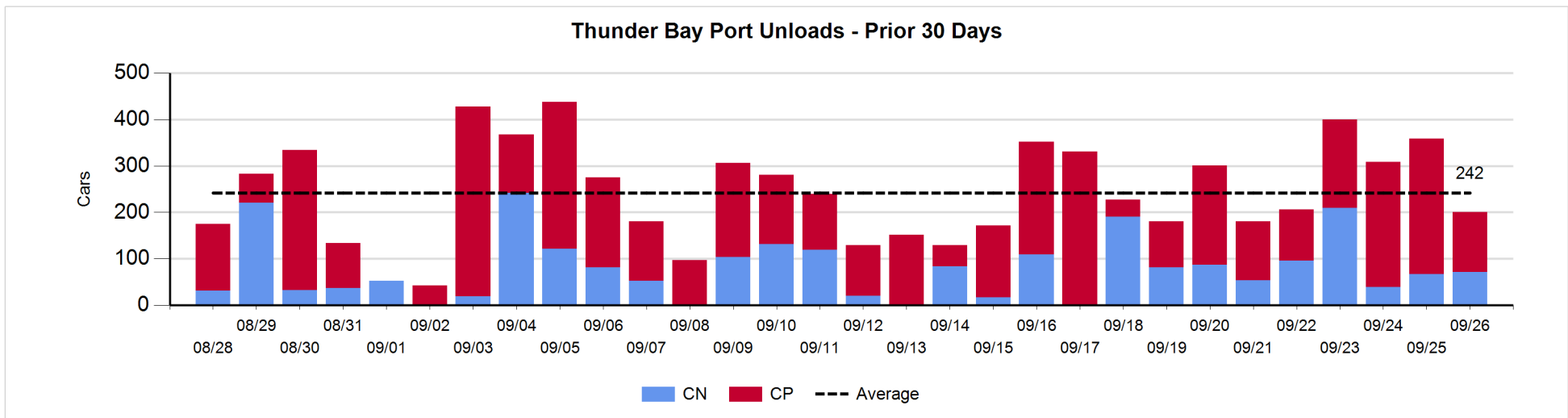
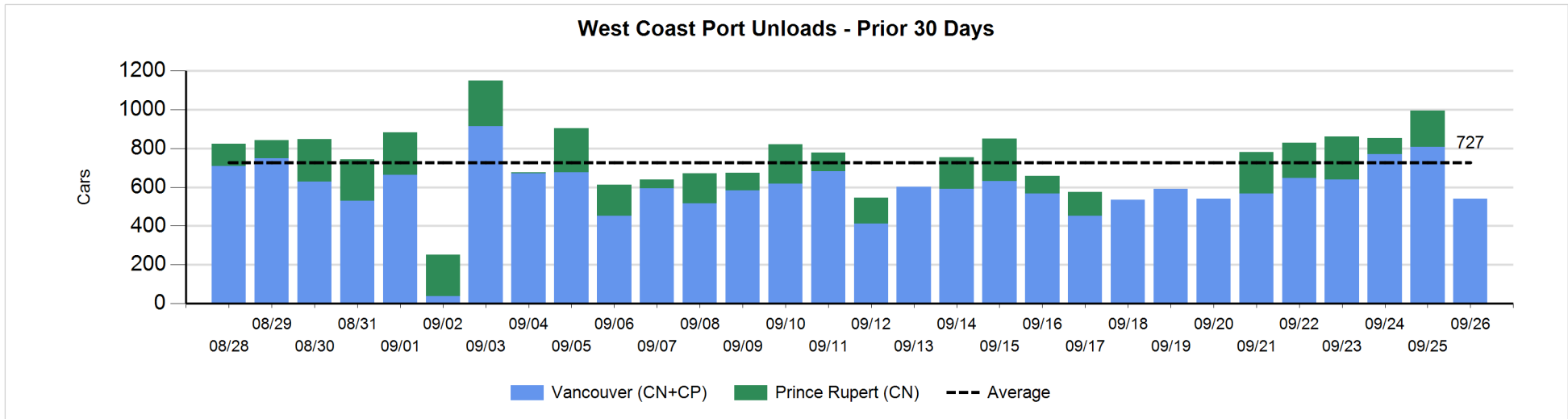
Change in Loads Not Moving 48 Hours or More - 9/26/2019

	E Canada	Prince Rupert	Thunder Bay	USA/MEX	Vancouver	Total
CN						
Origin				5	46	51
Enroute	-42	0	0	0	1	-41
Destination	-1		3	-3	-6	-7
	-43	0	3	2	41	3
CP						
Origin				1	-228	-227
Enroute	3		8	1	132	144
Destination			23		-163	-140
	3		31	2	-259	-223
US Rail / Short Line						
Origin						
Enroute				6		6
Destination				1	-1	0
				7	-1	6



Port Unloads - 9/26/2019

	Prince Rupert	Vancouver	West Coast Total	Thunder Bay	Total
CN		203	203	71	274
CP		336	336	129	465
		539	539	200	739



Port Terminal Status

Vancouver

Daily Activity for 9/26/2019

	Cars Arrived	Cars Received in Interchange	Cars Delivered in Interchange	Cars Placed for Unloading	Loads on Wheels at Destination As of 9/26/2019
CN	209	19	124	97	174
CP	270	122	21	439	783
SRY		4		4	8

Port Unloads

	09/26	09/25	Week To Date	Last Week
CN	203	350	1,104	1,128
CP	336	457	1,650	2,774
SRY	3	9	33	36

Age Profile of Loaded Cars Waiting Placement for Unloading

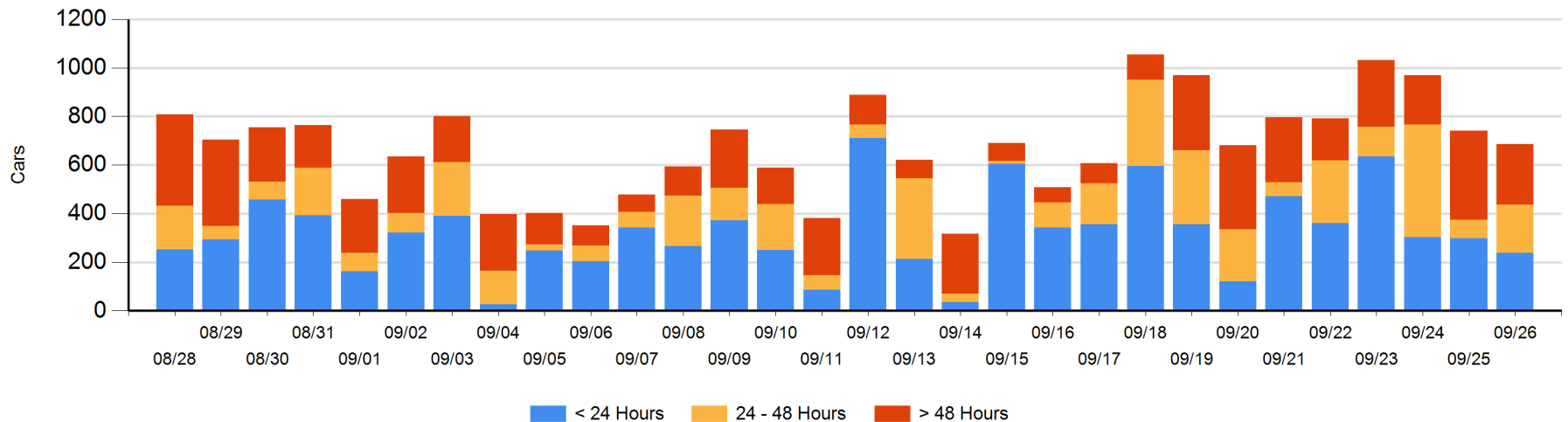
Today

	< 24 Hrs	24 - 48 Hrs	> 48-72 Hrs	> 72 Hrs	Total On Hand
CN	23	35	6	114	178
CP	215	164	42	87	508
SRY					0

Change in Last 24 Hours

	< 24 Hrs	24-48 Hrs	48 - 72 Hrs	> 72 Hrs
CN	-71	5	-102	59
CP	11	117	-116	42
SRY				

Loaded Cars on Hand Vancouver Waiting for Placement - Last 30 Days All Railways



Port Terminal Status

Prince Rupert

Daily Activity for 9/26/2019

	Cars Arrived	Cars Received in Interchange	Cars Delivered in Interchange	Cars Placed for Unloading	Loads on Wheels at Destination As of 9/26/2019
CN	28			28	30

Port Unloads

	09/26	09/25	Week To Date	Last Week
CN		187	493	608

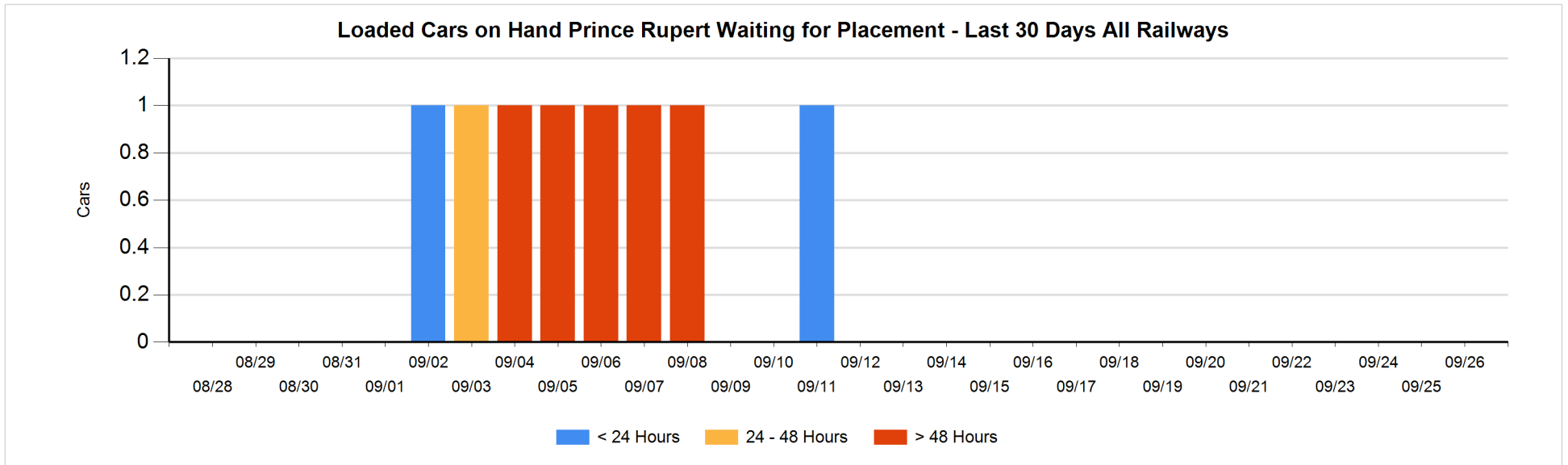
Age Profile of Loaded Cars Waiting Placement for Unloading

Today

	< 24 Hrs	24 - 48 Hrs	> 48-72 Hrs	> 72 Hrs	Total On Hand
CN					0

Change in Last 24 Hours

	< 24 Hrs	24-48 Hrs	48 - 72 Hrs	> 72 Hrs
CN				



Port Terminal Status

Thunder Bay

Daily Activity for 9/26/2019

	Cars Arrived	Cars Received in Interchange	Cars Delivered in Interchange	Cars Placed for Unloading	Loads on Wheels at Destination As of 9/26/2019
CN				115	183
CP	122			148	193

Port Unloads

	09/26	09/25	Week To Date	Last Week
CN	71	67	386	619
CP	129	292	882	1,159

Age Profile of Loaded Cars Waiting Placement for Unloading

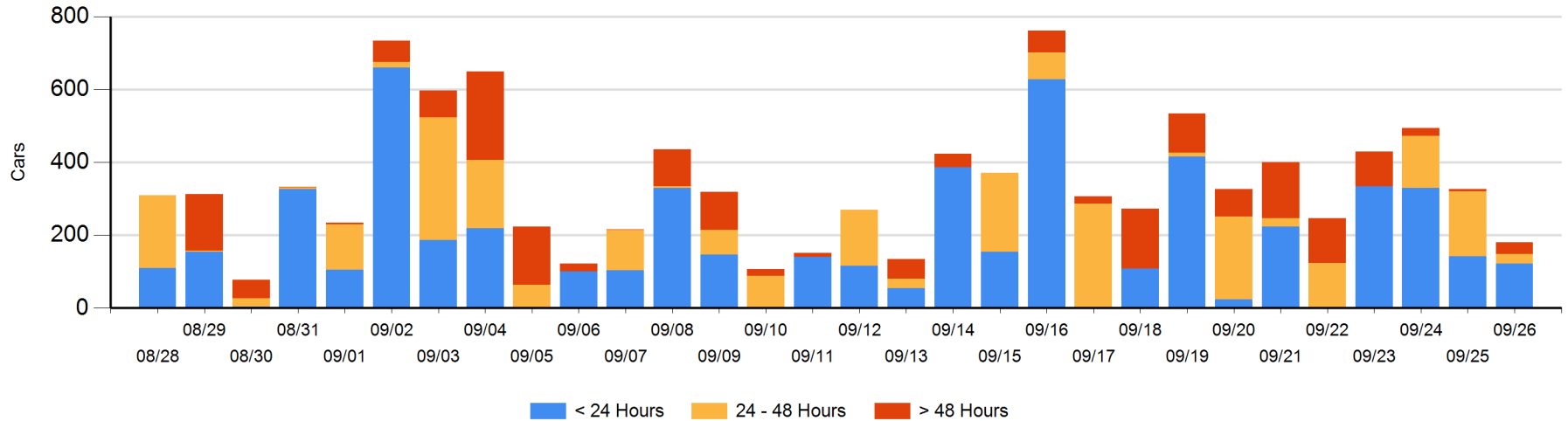
Today

	< 24 Hrs	24 - 48 Hrs	> 48-72 Hrs	> 72 Hrs	Total On Hand
CN		24	3		27
CP	122	3	23	6	154

Change in Last 24 Hours

	< 24 Hrs	24-48 Hrs	48 - 72 Hrs	> 72 Hrs
CN	-139	21	3	
CP	119	-172	17	6

Loaded Cars on Hand Thunder Bay Waiting for Placement - Last 30 Days All Railways



Measurement Definitions

Loads on Wheels	<p>Count of loaded rail cars including all rail cars that have been released loaded at origin and have not been reported by the railway as unloaded at destination.</p> <p>Counts include all rail cars (hopper cars and boxcars) moving within a pipeline.</p>
Loads Not Moving	<p>Loaded rail cars for which the railways have not reported a movement event for 48 hours or more whether the rail car is at origin, enroute or at destination.</p>
Port Unloads	<p>Count of rail cars reported by railways as unloaded at the western port destinations of Vancouver, Prince Rupert and Thunder Bay.</p> <p>Unload counts include all rail cars (hopper cars and boxcars) unloaded by all receivers including major port terminals, transloaders and other receivers.</p>
Cars Arrived	<p>Count of rail cars reported as arrived at the destination railway terminal.</p>
Cars Received in Interchange	<p>Count of rail cars received in interchange by each railway within a destination railway terminal. Interchange activity is tracked for the Vancouver and Thunder Bay pipelines as applicable.</p>
Cars Delivered in Interchange	<p>Count of rail cars delivered in interchange by each railway within a destination railway terminal. Interchange activity is tracked for the Vancouver and Thunder Bay pipelines as applicable.</p>
Cars Placed for Unloading	<p>Count of rail cars reported by the railways as placed loaded at the receiver's facility for unloading.</p>
Loads on Wheels at Destination	<p>Count of rail cars that remain under load within the destination railway terminal including rail cars that have been reported as placed for unloading but not yet reported as unloaded.</p>
Waiting Placement for Unloading	<p>Count of rail cars that have been reported as arrived at the destination railway terminal but not reported as placed for unloading by the railway.</p> <p>For the Ports of Vancouver, Prince Rupert and Thunder Bay the count of rail cars waiting placement for unloading is categorized by age – i.e. the elapsed time from arrival at destination to the current report date.</p>