

SPEED READ

- Loads on wheels decreased overnight, marking a decline in both CN and CP volumes. On a net basis, volumes decreased due to reduced volumes in the Vancouver, USA/MEX and E. Canada corridors offset by higher volumes in the Prince Rupert and Thunder Bay corridors.
- Network fluidity deteriorated overnight, led by a rise in idle car counts on both CN and CP by 40% (+75) and 71% (+212), respectively. The total count of cars for 4+ days on both railways decreased 30% (-39) overnight - now at 93 cars, the lowest seen in the last 30 days.
- Week 8 unloads ended ahead of prior week's performance by more than 1,100 unloads, reflecting improved week over week performance at Vancouver and Prince Rupert offset by lower unloads at Thunder Bay.

Loads on Wheels

- Loads on wheels decreased 3% (-251) overnight, due to lower volumes on both CN and CP - combined total at 8,575 and 20% above the trailing 30-day average.
- On a net basis, the decline in loads on wheels reflects reduced volumes in the Vancouver, USA/MEX and E. Canada corridors offset by higher volumes in the Prince Rupert and Thunder Bay corridors.
- CN volumes decreased 4% (-160) overnight, with lower traffic across all corridors other than Prince Rupert. System wide CN loads on wheels now at 4,250 and 25% above the trailing 30-day average.
- CP volumes decreased 3% (-124) overnight, driven by a decline in volumes across all corridors other than Thunder Bay. CP system wide loads on wheels now at 4,159 and 15% above the trailing 30-day average.
- Vancouver now at 4,140, decreased significantly by 15% (-731) overnight, now 1% above the trailing 30-day average.
- The Prince Rupert pipeline now at 1,604, the highest seen in the last 30 days, rose significantly by 26% (+333) overnight and has now increased for the fifth consecutive day, and 95% above the trailing 30-day average.
- Thunder Bay volumes increased for the fourth consecutive day, up 16% (+238) overnight - presently at 1,739, the highest seen in the last 30 days, and 44% above the trailing 30-day average, with 75% of traffic moving on CP.

Hopper Car Rationing

- No hopper cars were rationed by either CN or CP in week 7.

Loads Not Moving

- **The count of cars not moving for 48+ hours rose 59% (+287) overnight, reflecting higher counts on both CN and CP. Idle car counts presently at 773 and 9% above the trailing 30-day average.**
- CN
 - **The count of idle cars for 48+ hours rose 40% (+75) overnight - presently at 263 cars.**
 - The number of cars idle for 4+ days decreased 66% (-37) overnight - now at 19 cars, the lowest seen in the last 30 days.
 - The count of cars not moving for 7+ days decreased 81% (-39) overnight - now at 09 cars, the lowest seen in the last 30 days.
 - Vancouver represents 38% of all idle cars.
 - In total 49% of all idle cars are dwelling at origin locations.
- CP
 - **CP idle car counts for 48+ hours rose 71% (+212) overnight - presently at 510 cars.**

- The number of cars idle for 4+ days decreased 3% (-2) overnight - presently at 74 cars.
- The number of cars idle for 7+ days decreased 12% (-4) overnight - now at 30 cars.
- Vancouver accounts for 77% of all idle cars.
- In total 37% of all idle cars are dwelling at origin locations.

Port Performance

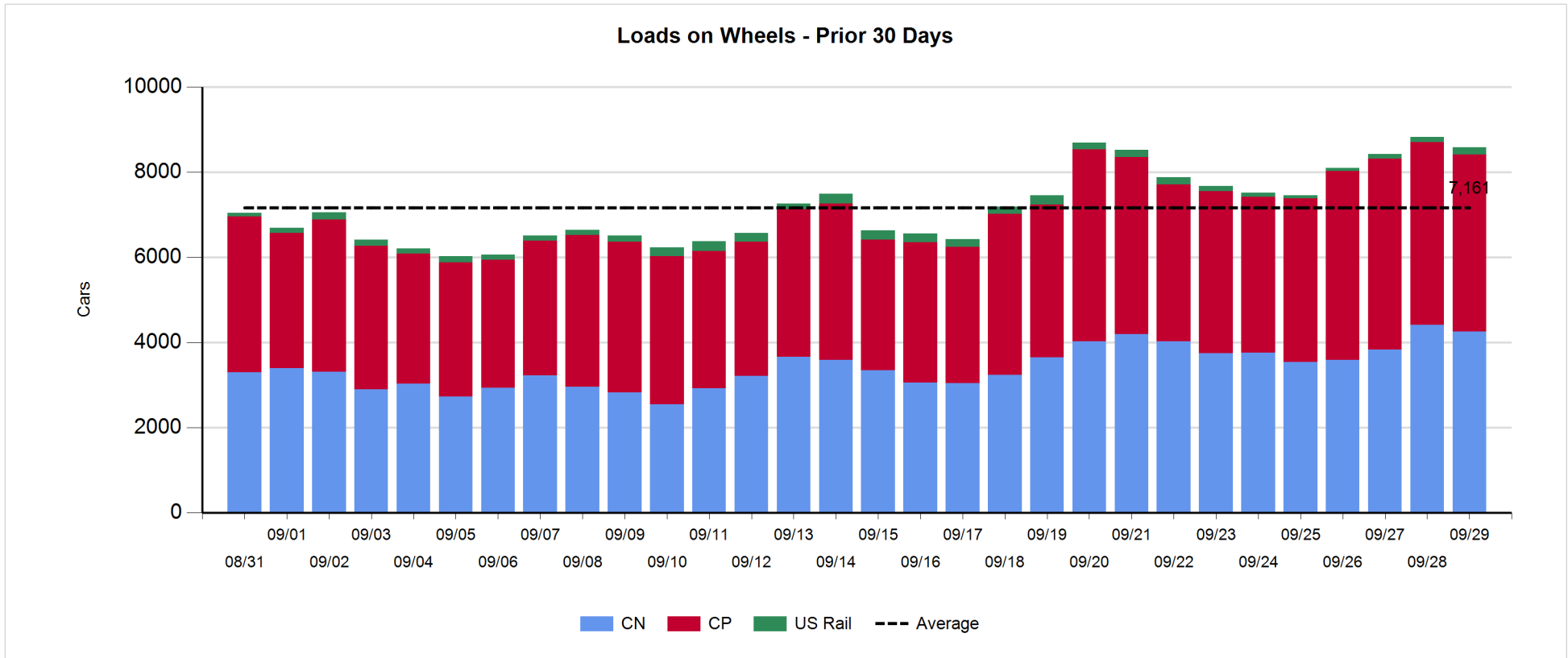
- CN and CP reported a total of 1,062 cars unloaded at the three major ports, now 11% above the trailing 30-day average. Week 8 unloads ended ahead of last week's pace by more than 1,100 unloads, reflecting higher unloads at Vancouver and Prince Rupert offset by lower unloads at Thunder Bay.
- Vancouver
 - 847 unloads reported by CN and CP at the Port of Vancouver; CN - 405 and CP - 442. Week 8 unloads ended ahead of last week's performance by more than 950 unloads.
 - There are more than 1,200 cars on site at Vancouver with 700 cars arriving at the port in the last 24 hours.
 - CN and CP have 1,050 cars in British Columbia en route to Vancouver, with 400 cars at Kamloops and west, and 58% of traffic moving on CP.
- Prince Rupert
 - Prince Rupert reported 115 unloads, finished ahead of last week's unloads by fewer than 200 unloads.
 - Loads on wheels now above 1,000 cars - now at 1,604 cars.
 - There are more than 550 cars west of Jasper en route to Prince Rupert.
 - There are 100 cars on site at Prince Rupert with zero cars arriving at the port in the last 24 hours.
- Thunder Bay
 - 100 unloads were reported at Thunder Bay yesterday. Week 8 unloads finished behind last week's pace by 26 unloads.
 - There are 600 cars on site at Thunder Bay with more than 400 cars arriving at the port in the prior 24 hours.
 - There are more than 550 cars en route to Thunder Bay from Winnipeg and east.

Daily Loads on Wheels - 9/29/2019

	E Canada	Prince Rupert	Thunder Bay	USA/MEX	Vancouver	Total
CN	391	1,604	434	226	1,595	4,250
CP	16		1,305	326	2,512	4,159
Short Line	9				33	42
US Rail				124		124
	416	1,604	1,739	676	4,140	8,575

Change in Loads on Wheels - Prior 24 Hours

	E Canada	Prince Rupert	Thunder Bay	USA/MEX	Vancouver	Total
CN	-10	333	-32	-12	-439	-160
CP	0		270	-101	-293	-124
Short Line	1				1	2
US Rail				31		31
	-9	333	238	-82	-731	-251

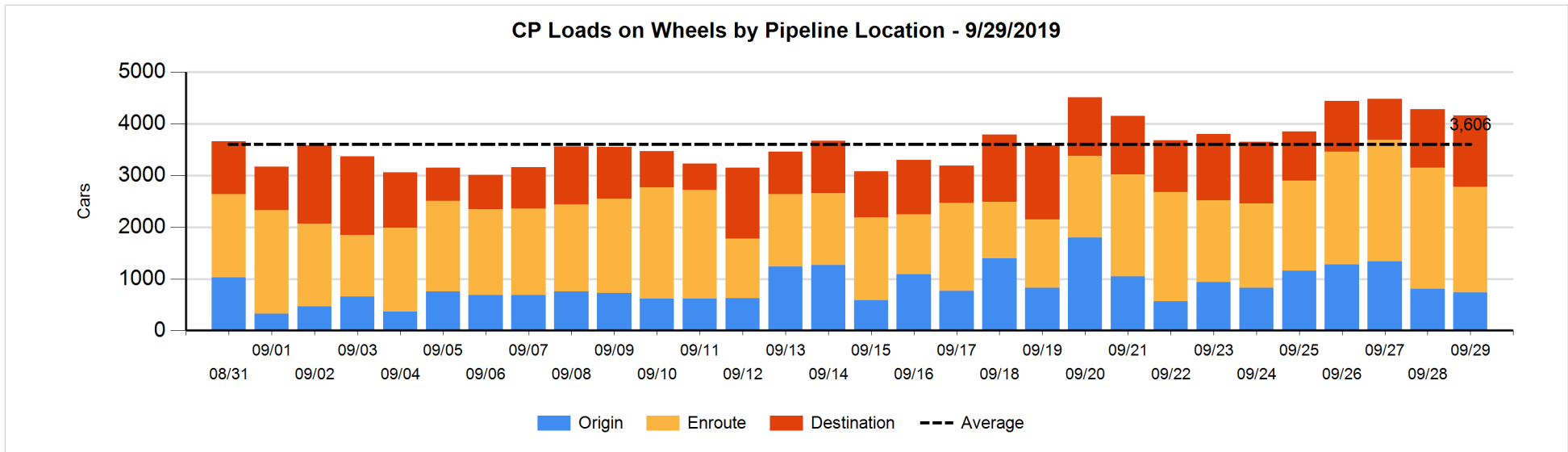
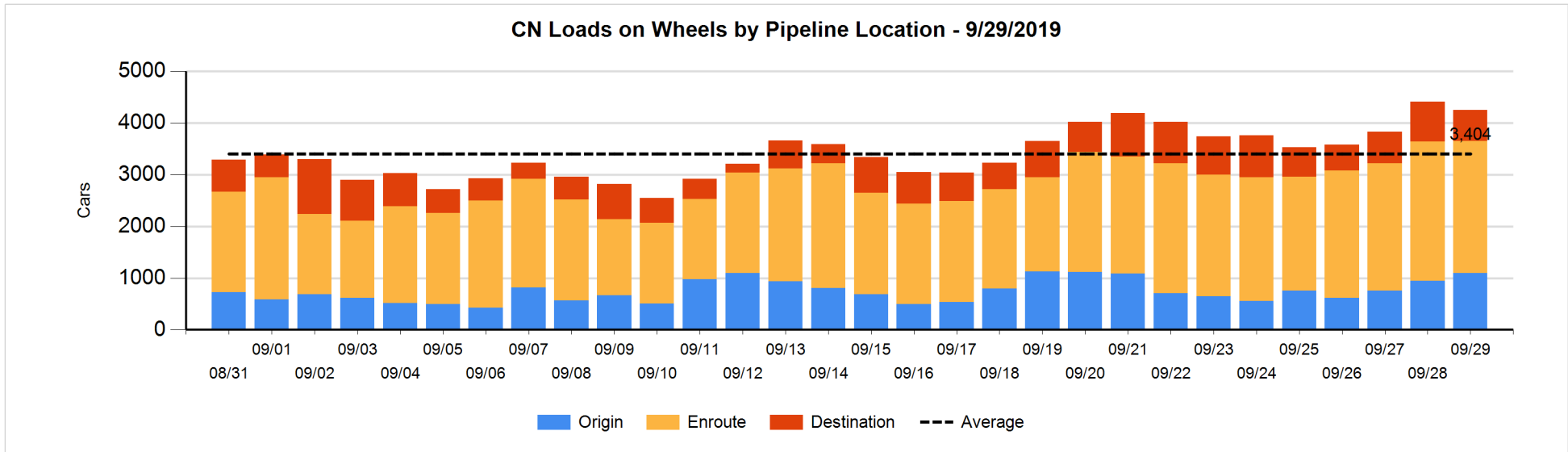


Daily Loads on Wheels By Pipeline Location - 9/29/2019

	E Canada	Prince Rupert	Thunder Bay	USA/MEX	Vancouver	Total
CN						
Origin		815		58	223	1,096
Enroute	331	699	293	151	1,079	2,553
Destination	60	90	141	17	293	601
	391	1,604	434	226	1,595	4,250
CP						
Origin			343	101	293	737
Enroute	10		498	198	1,333	2,039
Destination	6		464	27	886	1,383
	16		1,305	326	2,512	4,159
US Rail / Short Line						
Origin	1					1
Enroute				37		37
Destination	8			87	33	128
	9			124	33	166

Change in Daily Loads on Wheels By Pipeline Location - Prior 24 Hours

	E Canada	Prince Rupert	Thunder Bay	USA/MEX	Vancouver	Total
CN						
Origin	-162	448	-125	-9	1	153
Enroute	135	-90	-12	5	-182	-144
Destination	17	-25	105	-8	-258	-169
	-10	333	-32	-12	-439	-160
CP						
Origin			226	38	-333	-69
Enroute	-4		-179	-53	-65	-301
Destination	4		223	-86	105	246
	0		270	-101	-293	-124
US Rail / Short Line						
Origin	1					1
Enroute				-6		-6
Destination	0			37	1	38
	1			31	1	33

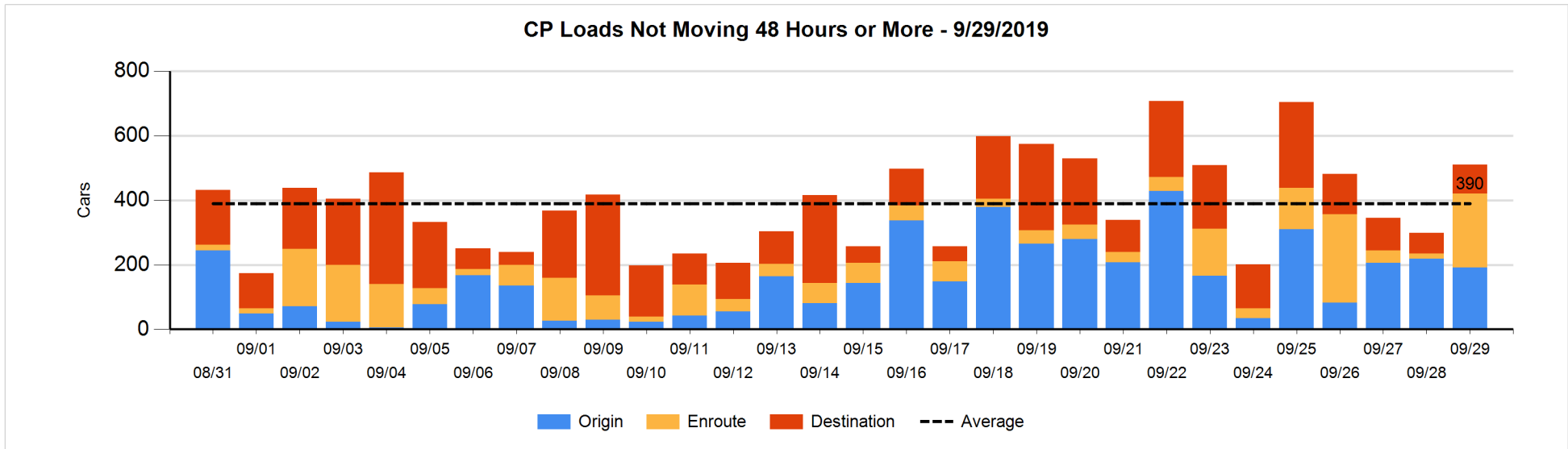
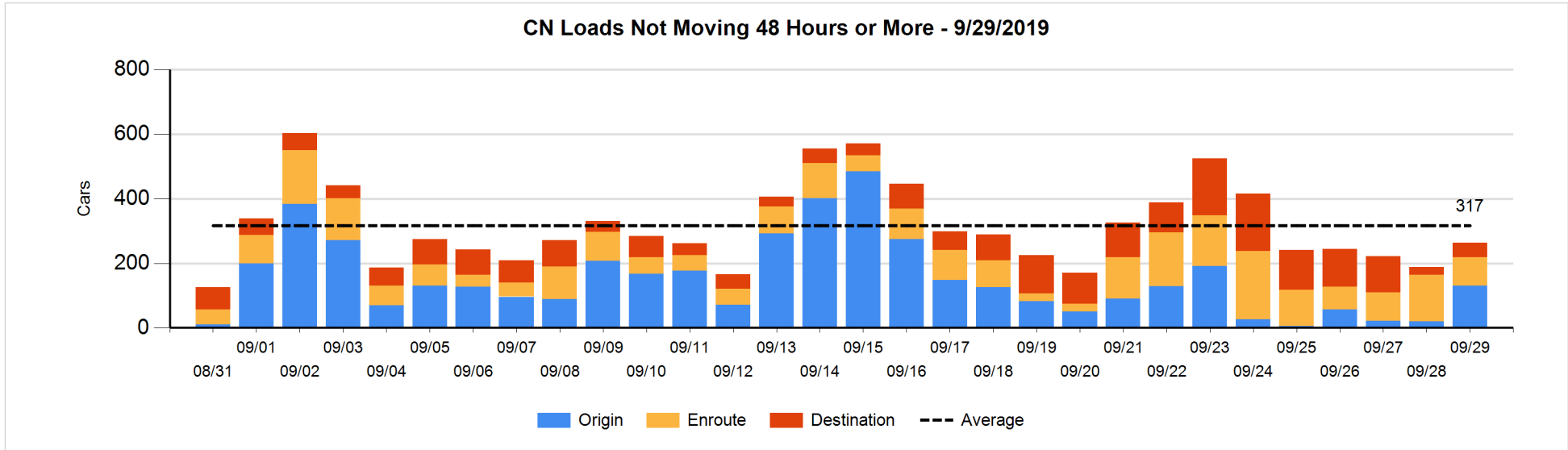


Loads Not Moving 48 Hours or More - 9/29/2019

	E Canada	Prince Rupert	Thunder Bay	USA/MEX	Vancouver	Total
CN						
Origin				58	72	130
Enroute	12	10	1	48	17	88
Destination	19		3	13	10	45
	31	10	4	119	99	263
CP						
Origin			10		181	191
Enroute	3		1	99	126	229
Destination	2			2	86	90
	5		11	101	393	510
US Rail / Short Line						
Origin						
Enroute				17		17
Destination	8			22	30	60
	8			39	30	77

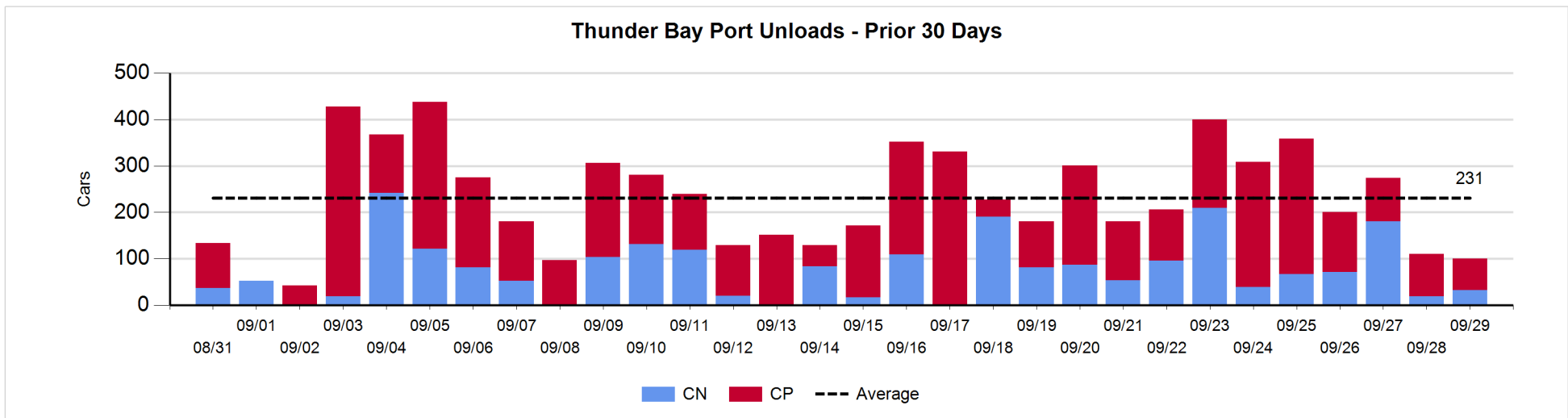
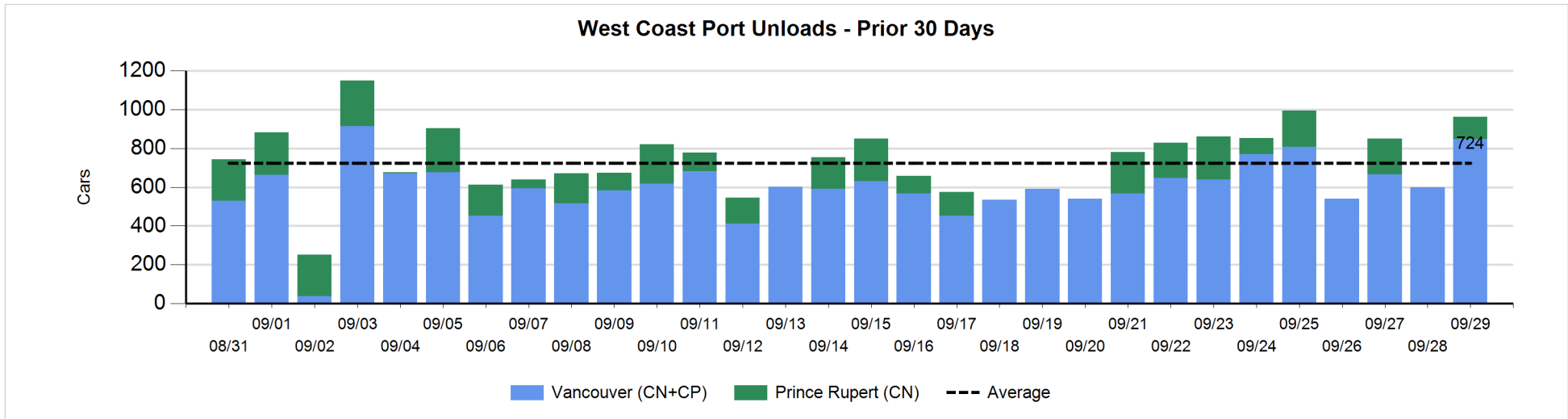
Change in Loads Not Moving 48 Hours or More - 9/29/2019

	E Canada	Prince Rupert	Thunder Bay	USA/MEX	Vancouver	Total
CN						
Origin	-4			46	68	110
Enroute	-60	5	0	47	-48	-56
Destination	1		3	8	9	21
	-63	5	3	101	29	75
CP						
Origin			10	-12	-25	-27
Enroute	1		0	96	116	213
Destination	0		-4	0	30	26
	1		6	84	121	212
US Rail / Short Line						
Origin						
Enroute				1		1
Destination	8			7	29	44
	8			8	29	45



Port Unloads - 9/29/2019

	Prince Rupert	Vancouver	West Coast Total	Thunder Bay	Total
CN	115	405	520	32	552
CP		442	442	68	510
	115	847	962	100	1,062



Port Terminal Status

Vancouver

Daily Activity for 9/29/2019

	Cars Arrived	Cars Received in Interchange	Cars Delivered in Interchange	Cars Placed for Unloading	Loads on Wheels at Destination As of 9/29/2019
CN	351	112	56	255	294
CP	355	56	113	349	886
SRY		1			33

Port Unloads

	09/29	09/28	Week To Date	Last Week
CN	405	172	1,871	1,128
CP	442	426	2,994	2,774
SRY		1	38	36

Age Profile of Loaded Cars Waiting Placement for Unloading

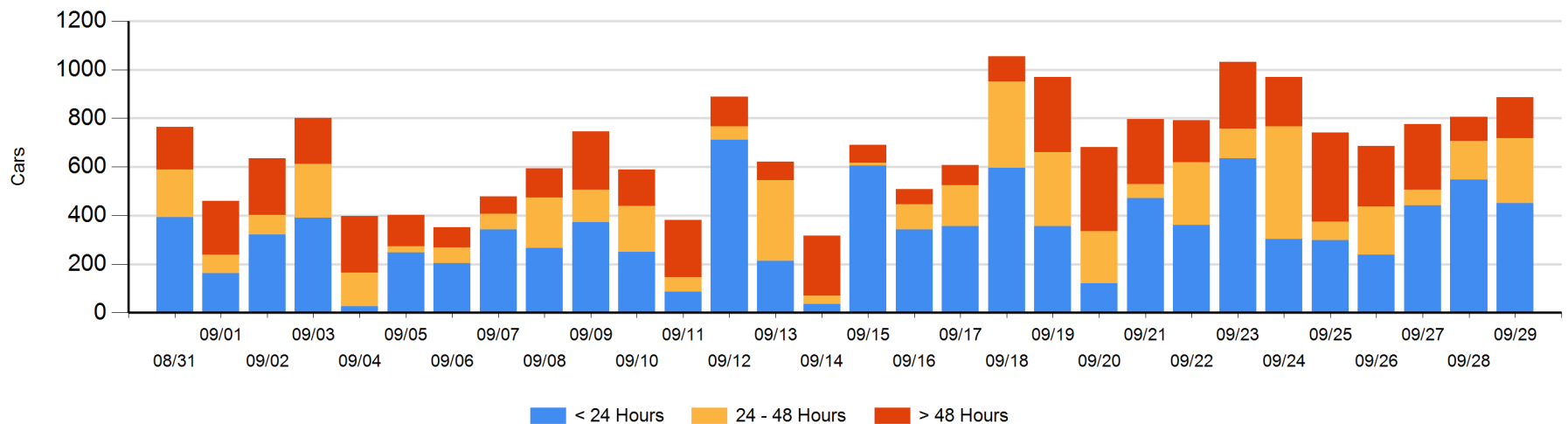
Today

	< 24 Hrs	24 - 48 Hrs	> 48-72 Hrs	> 72 Hrs	Total On Hand
CN	148	130	53	35	366
CP	303	137	42	38	520
SRY					0

Change in Last 24 Hours

	< 24 Hrs	24-48 Hrs	48 - 72 Hrs	> 72 Hrs
CN	19	76	44	6
CP	-116	33	18	0
SRY				

Loaded Cars on Hand Vancouver Waiting for Placement - Last 30 Days All Railways



Port Terminal Status

Prince Rupert

Daily Activity for 9/29/2019

Cars Arrived	Cars Received in Interchange	Cars Delivered in Interchange	Cars Placed for Unloading	Loads on Wheels at Destination As of 9/29/2019
				90
CN				

Port Unloads

	09/29	09/28	Week To Date	Last Week
CN	115		793	608

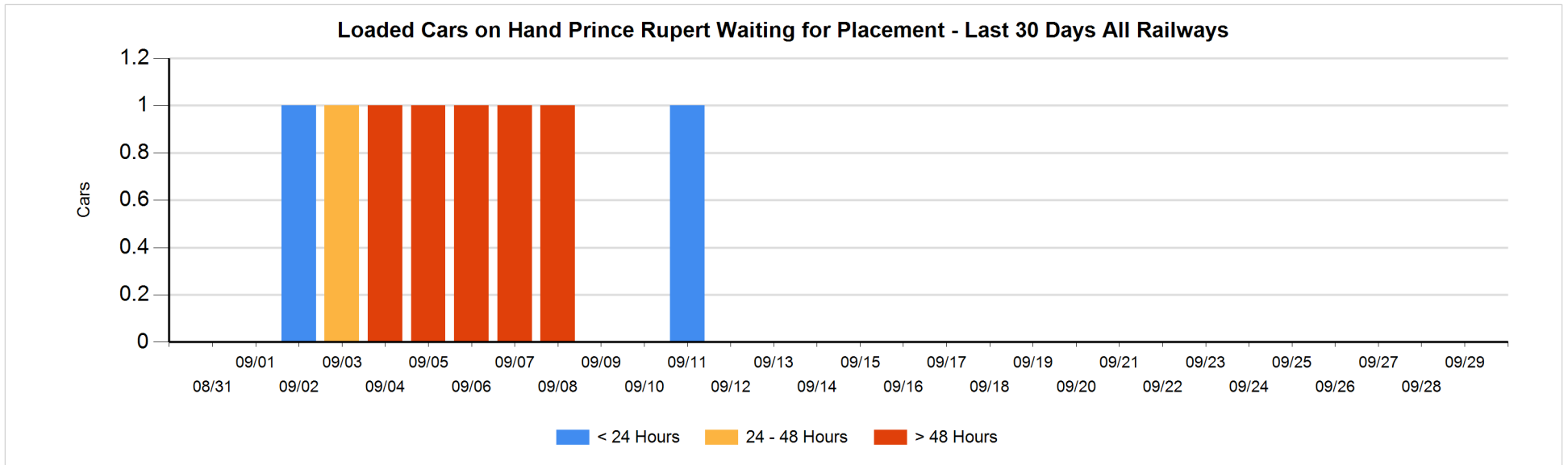
Age Profile of Loaded Cars Waiting Placement for Unloading

Today

< 24 Hrs	24 - 48 Hrs	> 48-72 Hrs	> 72 Hrs	Total On Hand
				0
CN				

Change in Last 24 Hours

< 24 Hrs	24-48 Hrs	48 - 72 Hrs	> 72 Hrs
CN			



Port Terminal Status

Thunder Bay

Daily Activity for 9/29/2019

	Cars Arrived	Cars Received in Interchange	Cars Delivered in Interchange	Cars Placed for Unloading	Loads on Wheels at Destination As of 9/29/2019
CN	137			23	141
CP	291			182	464

Port Unloads

	09/29	09/28	Week To Date	Last Week
CN	32	19	617	619
CP	68	91	1,135	1,159

Age Profile of Loaded Cars Waiting Placement for Unloading

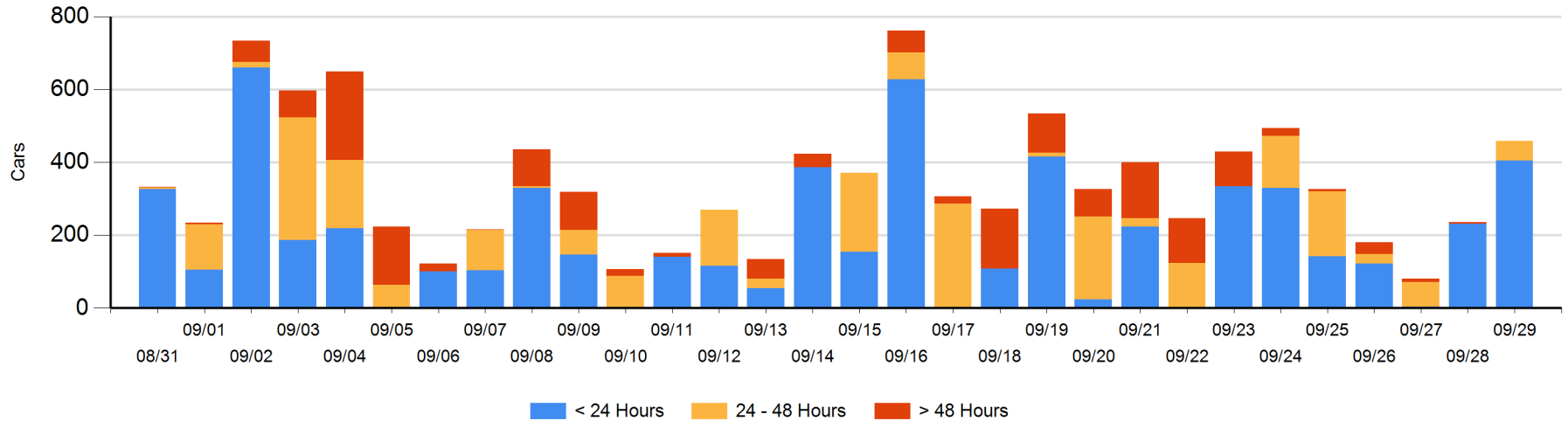
Today

	< 24 Hrs	24 - 48 Hrs	> 48-72 Hrs	> 72 Hrs	Total On Hand
CN	114				114
CP	291	54			345

Change in Last 24 Hours

	< 24 Hrs	24-48 Hrs	48 - 72 Hrs	> 72 Hrs
CN	114			
CP	59	54		-4

Loaded Cars on Hand Thunder Bay Waiting for Placement - Last 30 Days All Railways



Measurement Definitions

Loads on Wheels	<p>Count of loaded rail cars including all rail cars that have been released loaded at origin and have not been reported by the railway as unloaded at destination.</p> <p>Counts include all rail cars (hopper cars and boxcars) moving within a pipeline.</p>
Loads Not Moving	<p>Loaded rail cars for which the railways have not reported a movement event for 48 hours or more whether the rail car is at origin, enroute or at destination.</p>
Port Unloads	<p>Count of rail cars reported by railways as unloaded at the western port destinations of Vancouver, Prince Rupert and Thunder Bay.</p> <p>Unload counts include all rail cars (hopper cars and boxcars) unloaded by all receivers including major port terminals, transloaders and other receivers.</p>
Cars Arrived	<p>Count of rail cars reported as arrived at the destination railway terminal.</p>
Cars Received in Interchange	<p>Count of rail cars received in interchange by each railway within a destination railway terminal. Interchange activity is tracked for the Vancouver and Thunder Bay pipelines as applicable.</p>
Cars Delivered in Interchange	<p>Count of rail cars delivered in interchange by each railway within a destination railway terminal. Interchange activity is tracked for the Vancouver and Thunder Bay pipelines as applicable.</p>
Cars Placed for Unloading	<p>Count of rail cars reported by the railways as placed loaded at the receiver's facility for unloading.</p>
Loads on Wheels at Destination	<p>Count of rail cars that remain under load within the destination railway terminal including rail cars that have been reported as placed for unloading but not yet reported as unloaded.</p>
Waiting Placement for Unloading	<p>Count of rail cars that have been reported as arrived at the destination railway terminal but not reported as placed for unloading by the railway.</p> <p>For the Ports of Vancouver, Prince Rupert and Thunder Bay the count of rail cars waiting placement for unloading is categorized by age – i.e. the elapsed time from arrival at destination to the current report date.</p>