

## SPEED READ

- Loads on wheels increased overnight, marking a rise in both CN and CP volumes. On a net basis, volumes gained due to higher traffic across all corridors other than Vancouver.
- Network fluidity deteriorated overnight, led by an increase in idle car counts on CP by 42% (+216) offset by a decline in idle car counts on CN by 33% (-90). The total count of cars for 4+ days on both railways gained significantly by 84% (+79) overnight - currently at 173 cars.
- One day in Week 9 unloads now ahead of prior week's performance by nearly 50 unloads, marking improved week over week performance at Vancouver and Prince Rupert offset by lower unloads at Thunder Bay.

---

## Loads on Wheels

- Loads on wheels increased 5% (+437) overnight, due to higher traffic on both CN and CP - combined total at 9,024, the highest seen in the last 30 days, and 25% above the trailing 30-day average.
- On a net basis, the rise in loads on wheels indicates higher traffic across all corridors other than Vancouver.
- CN volumes gained 5% (+201) overnight, with higher traffic across all corridors other than Vancouver. System wide CN loads on wheels currently at 4,458, the highest seen in the last 30 days, and 29% above the trailing 30-day average.
- CP volumes increased 4% (+181) overnight, driven by a rise in volumes in the Thunder Bay corridor offset by a decline in volumes in the USA/MEX, Vancouver and E. Canada corridors. CP system wide loads on wheels presently at 4,345 and 20% above the trailing 30-day average.
- Vancouver currently at 4,079, declined marginally by 1% (-61) overnight and have now decreased for the third consecutive day, now 1% below the trailing 30-day average.
- The Prince Rupert pipeline presently at 1,667, the highest seen in the last 30 days, increased for the sixth consecutive day, up 4% (+63) overnight, and 97% above the trailing 30-day average.
- Thunder Bay volumes increased 19% (+324) overnight and have now increased for the fifth consecutive day - currently at 2,064, the highest seen in the last 30 days, and 67% above the trailing 30-day average, with 76% of traffic moving on CP.

## Hopper Car Rationing

- No hopper cars were rationed by either CN or CP in week 7.

## Loads Not Moving

- **The count of cars not moving for 48+ hours increased 16% (+126) overnight, reflecting higher counts on CP offset by reduced counts on CN. Idle car counts now at 906 and 26% above the trailing 30-day average.**
- CN
  - **The count of idle cars for 48+ hours decreased 33% (-90) overnight - currently at 180 cars.**
  - The number of cars idle for 4+ days increased 35% (+7) overnight - now at 27 cars.
  - The count of cars not moving for 7+ days declined 11% (-1) overnight - now at 08 cars, the lowest seen in the last 30 days.
  - Vancouver represents 32% of all idle cars.
  - In total 41% of all idle cars are dwelling at origin locations.
- CP
  - **CP idle car counts for 48+ hours increased 42% (+216) overnight - presently at 726 cars, the highest seen in the last 30 days.**

- The number of cars idle for 4+ days increased significantly by 97% (+72) overnight - currently at 146 cars.
- The number of cars idle for 7+ days increased significantly by 60% (+18) overnight - presently at 48 cars.
- Vancouver accounts for 71% of all idle cars.
- In total 55% of all idle cars are dwelling at origin locations.

### **Port Performance**

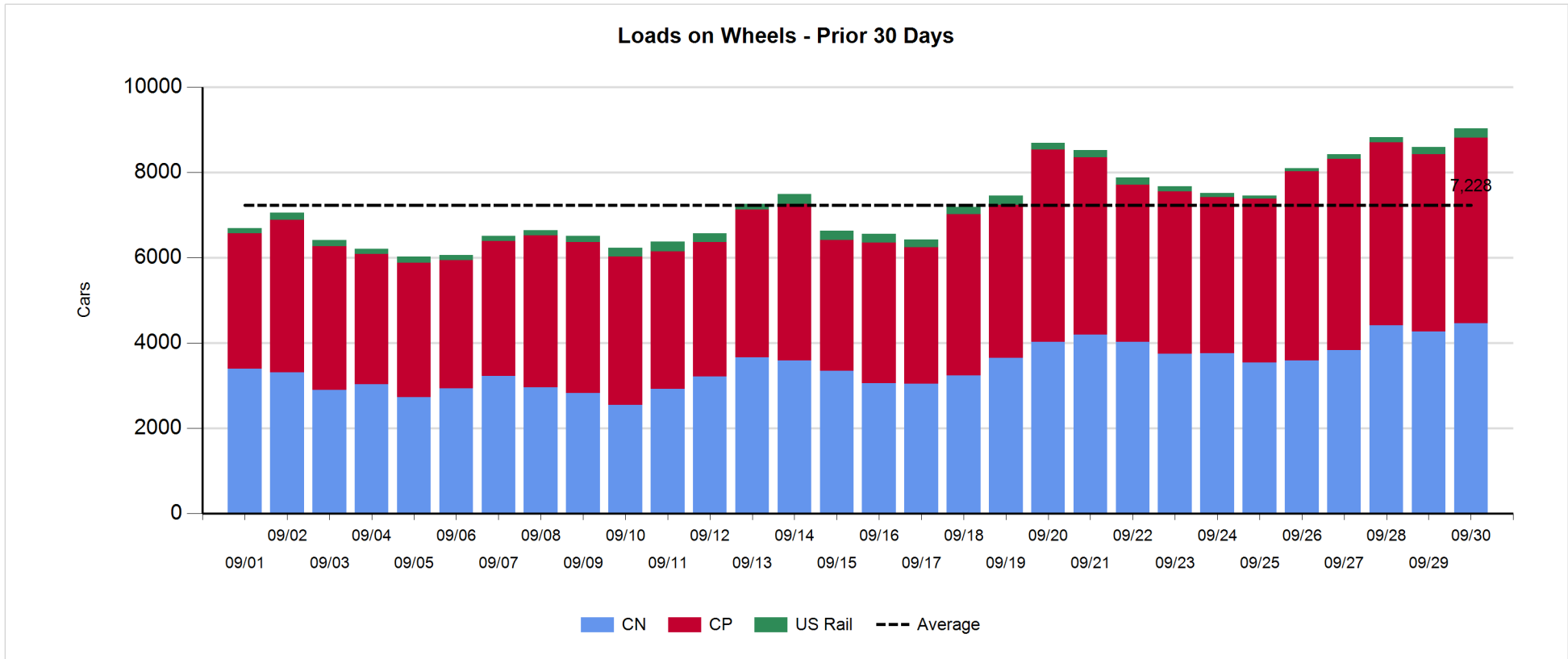
- CN and CP reported a total of 1,297 cars unloaded at the three major ports, now 34% above the trailing 30-day average. One day in Week 9 unloads now ahead of last week's pace by less than 50 unloads, marking higher unloads at Vancouver and Prince Rupert offset by lower unloads at Thunder Bay.
- Vancouver
  - 724 unloads reported by CN and CP at the Port of Vancouver; CN - 259 and CP - 465. One day in Week 9 unloads are tracking ahead of last week's performance by less than 100 unloads.
  - There are 1,350 cars on site at Vancouver with 850 cars arriving at the port in the last 24 hours.
  - CN and CP have more than 800 cars in British Columbia en route to Vancouver, with more than 450 cars at Kamloops and west, and 68% of traffic moving on CP.
- Prince Rupert
  - Prince Rupert reported 274 unloads, the highest seen in the last 30 days, now ahead of last week's unloads after one day by 50 unloads.
  - Loads on wheels now above 1,000 cars - currently at 1,667 cars.
  - There are more than 200 cars west of Jasper en route to Prince Rupert.
  - There are more than 150 cars on site at Prince Rupert with 450 cars arriving at the port in the last 24 hours.
- Thunder Bay
  - 299 unloads were reported at Thunder Bay yesterday. One day in Week 9 unloads are tracking behind last week's pace by 100 unloads.
  - There are more than 750 cars on site at Thunder Bay with more than 450 cars arriving at the port in the prior 24 hours.
  - There are more than 300 cars en route to Thunder Bay from Winnipeg and east.

**Daily Loads on Wheels - 9/30/2019**

	E Canada	Prince Rupert	Thunder Bay	USA/MEX	Vancouver	Total
CN	496	1,667	487	261	1,547	4,458
CP	10		1,577	272	2,486	4,345
Short Line	9				46	55
US Rail				166		166
	515	1,667	2,064	699	4,079	9,024

**Change in Loads on Wheels - Prior 24 Hours**

	E Canada	Prince Rupert	Thunder Bay	USA/MEX	Vancouver	Total
CN	98	63	53	35	-48	201
CP	-10		271	-54	-26	181
Short Line	0				13	13
US Rail				42		42
	88	63	324	23	-61	437

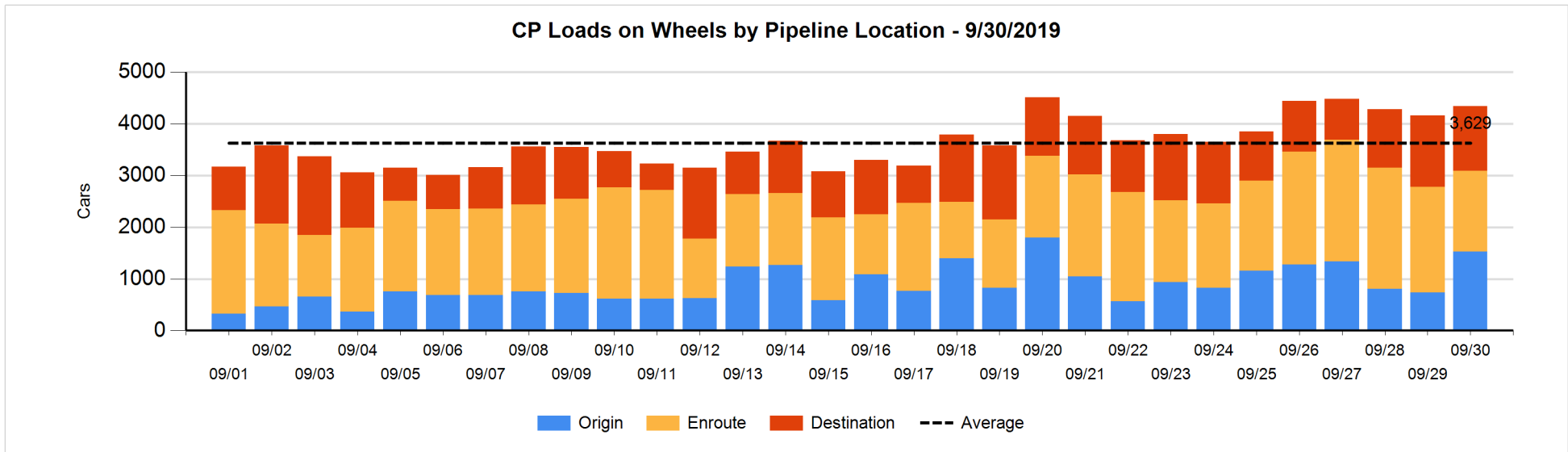
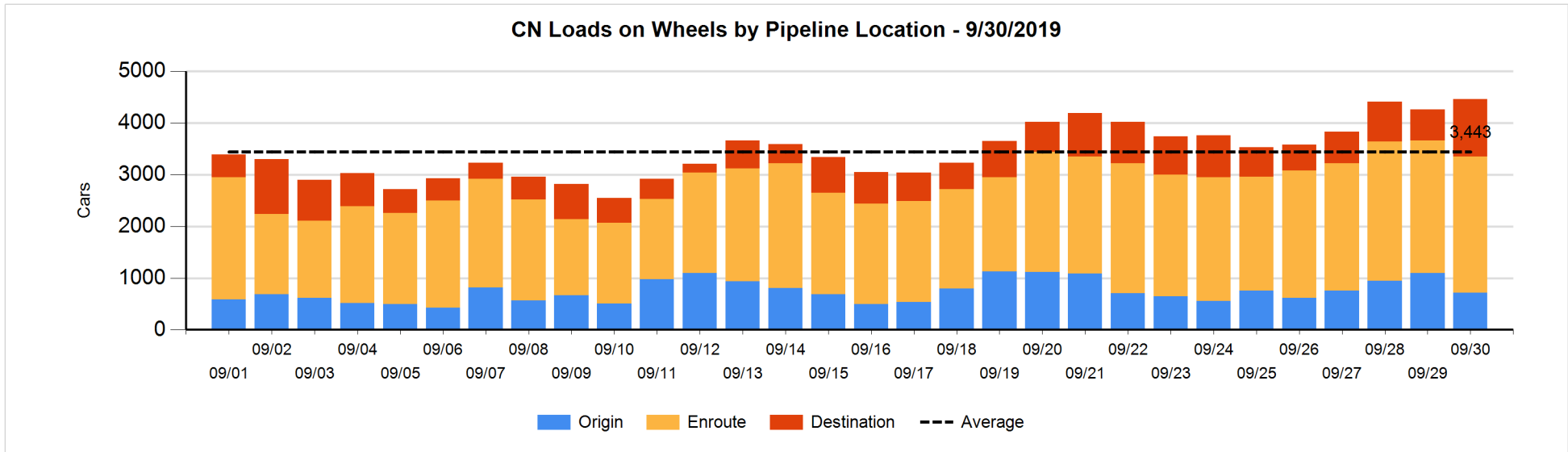


**Daily Loads on Wheels By Pipeline Location - 9/30/2019**

	E Canada	Prince Rupert	Thunder Bay	USA/MEX	Vancouver	Total
CN						
Origin	3	397		111	203	714
Enroute	443	1,103	190	94	803	2,633
Destination	50	167	297	56	541	1,111
	496	1,667	487	261	1,547	4,458
CP						
Origin	2		650	101	770	1,523
Enroute	8		449	158	956	1,571
Destination			478	13	760	1,251
	10		1,577	272	2,486	4,345
US Rail / Short Line						
Origin						
Enroute				42		42
Destination	9			124	46	179
	9			166	46	221

**Change in Daily Loads on Wheels By Pipeline Location - Prior 24 Hours**

	E Canada	Prince Rupert	Thunder Bay	USA/MEX	Vancouver	Total
CN						
Origin	3	-418		53	-20	-382
Enroute	105	404	-103	-57	-276	73
Destination	-10	77	156	39	248	510
	98	63	53	35	-48	201
CP						
Origin	2		306	0	477	785
Enroute	-6		-49	-40	-377	-472
Destination	-6		14	-14	-126	-132
	-10		271	-54	-26	181
US Rail / Short Line						
Origin	-1					-1
Enroute				5		5
Destination	1			37	13	51
	0			42	13	55

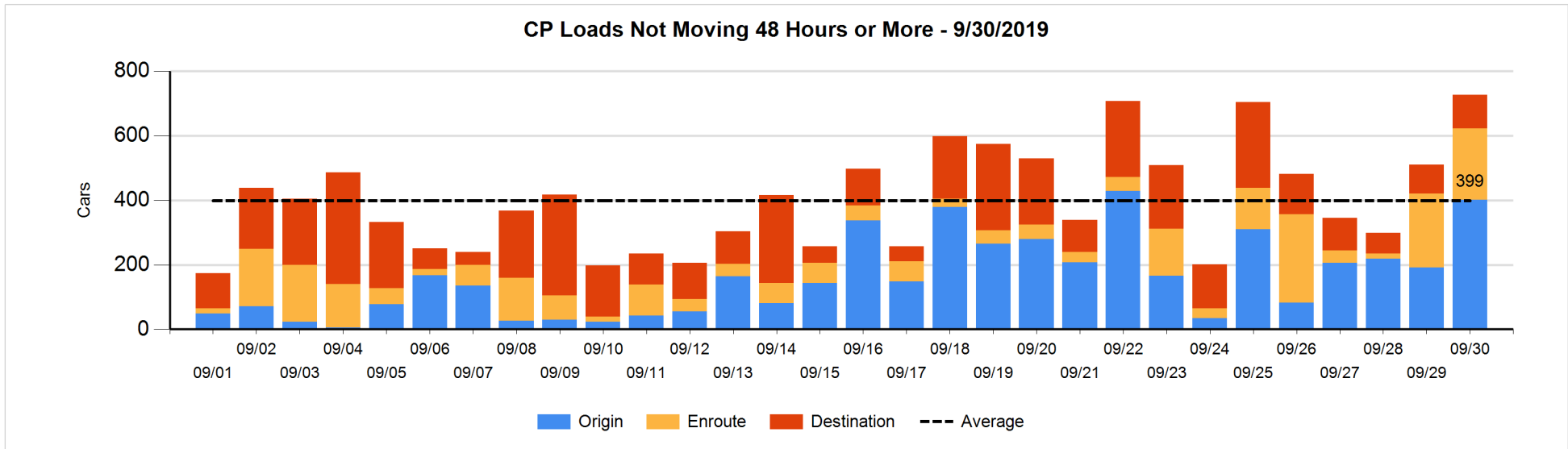
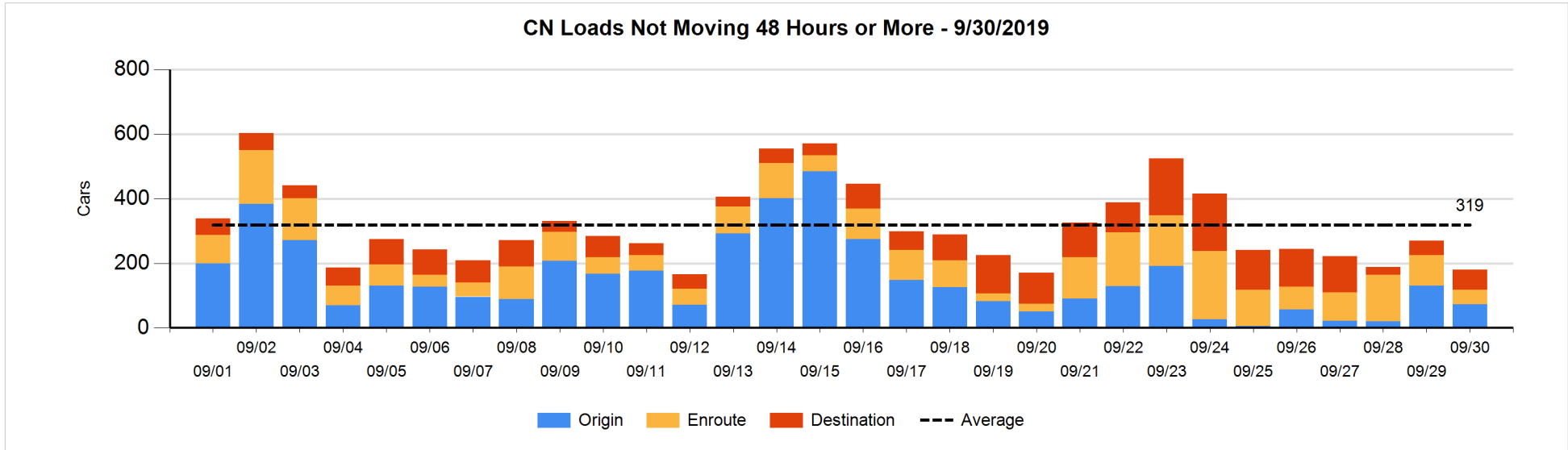


**Loads Not Moving 48 Hours or More - 9/30/2019**

	E Canada	Prince Rupert	Thunder Bay	USA/MEX	Vancouver	Total
<b>CN</b>						
Origin				55	18	73
Enroute	18	11	1	1	14	45
Destination	31		1	5	25	62
	49	11	2	61	57	180
<b>CP</b>						
Origin			10	101	290	401
Enroute			1	99	121	221
Destination				1	103	104
			11	201	514	726
<b>US Rail / Short Line</b>						
Origin						
Enroute				16		16
Destination	4			18	4	26
	4			34	4	42

**Change in Loads Not Moving 48 Hours or More - 9/30/2019**

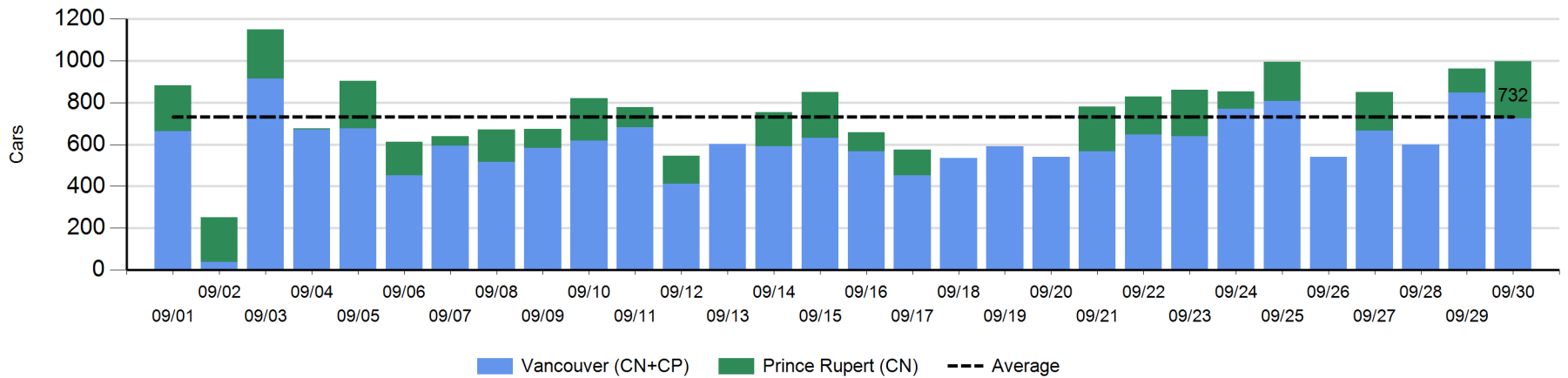
	E Canada	Prince Rupert	Thunder Bay	USA/MEX	Vancouver	Total
<b>CN</b>						
Origin				-3	-54	-57
Enroute	-1	1	0	-47	-3	-50
Destination	12		-2	-8	15	17
	11	1	-2	-58	-42	-90
<b>CP</b>						
Origin			0	101	109	210
Enroute	-3		0	0	-5	-8
Destination	-2			-1	17	14
	-5		0	100	121	216
<b>US Rail / Short Line</b>						
Origin						
Enroute				-1		-1
Destination	-4			-4	-26	-34
	-4			-5	-26	-35



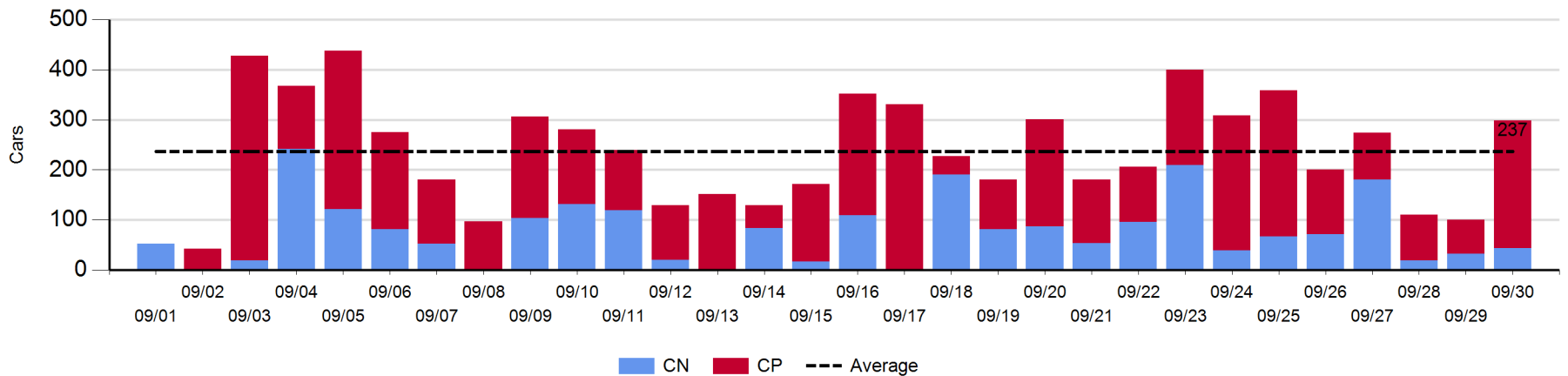
Port Unloads - 9/30/2019

	Prince Rupert	Vancouver	West Coast Total	Thunder Bay	Total
CN	274	259	533	44	577
CP		465	465	255	720
	274	724	998	299	1,297

West Coast Port Unloads - Prior 30 Days



Thunder Bay Port Unloads - Prior 30 Days





**Port Terminal Status**

**Vancouver**

Daily Activity for 9/30/2019

	Cars Arrived	Cars Received in Interchange	Cars Delivered in Interchange	Cars Placed for Unloading	Loads on Wheels at Destination As of 9/30/2019
CN	582	162	238	259	542
CP	259	238	177	444	760
SRY	1	15		2	46

**Port Unloads**

	09/30	09/29	Week To Date	Last Week
CN	259	405	259	1,871
CP	465	442	465	2,994
SRY	3		3	38

**Age Profile of Loaded Cars Waiting Placement for Unloading**

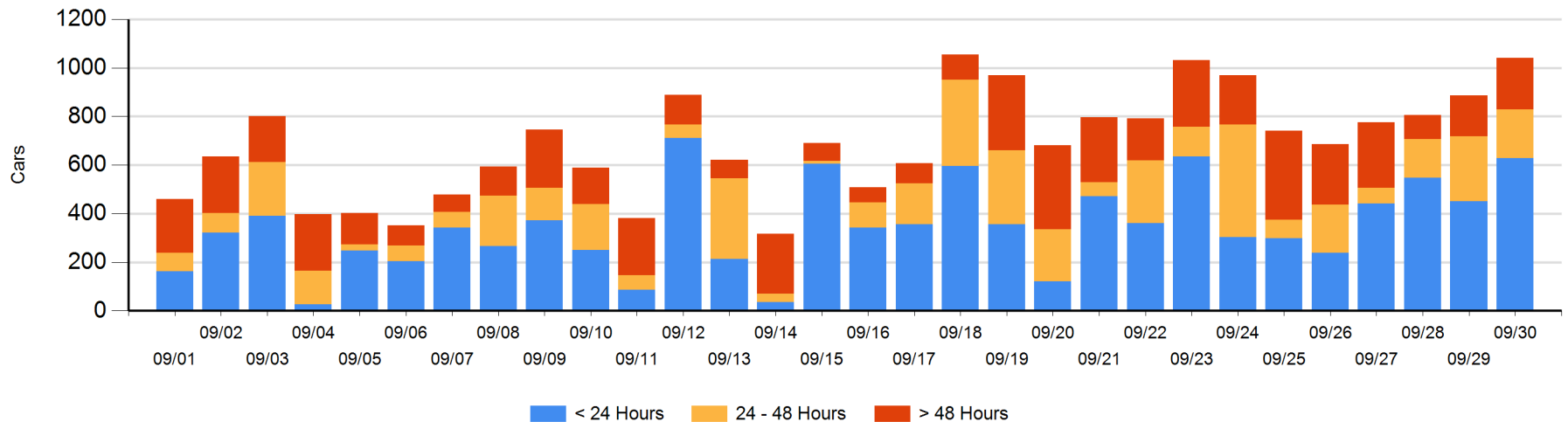
**Today**

	< 24 Hrs	24 - 48 Hrs	> 48-72 Hrs	> 72 Hrs	Total On Hand
CN	374	46	26	58	504
CP	255	153	55	73	536
SRY					0

**Change in Last 24 Hours**

	< 24 Hrs	24-48 Hrs	48 - 72 Hrs	> 72 Hrs
CN	226	-84	-27	23
CP	-48	16	13	35
SRY				

**Loaded Cars on Hand Vancouver Waiting for Placement - Last 30 Days All Railways**



**Port Terminal Status**

**Prince Rupert**

Daily Activity for 9/30/2019

	Cars Arrived	Cars Received in Interchange	Cars Delivered in Interchange	Cars Placed for Unloading	Loads on Wheels at Destination As of 9/30/2019
CN	441			441	167

**Port Unloads**

	09/30	09/29	Week To Date	Last Week
CN	274	115	274	793

**Age Profile of Loaded Cars Waiting Placement for Unloading**

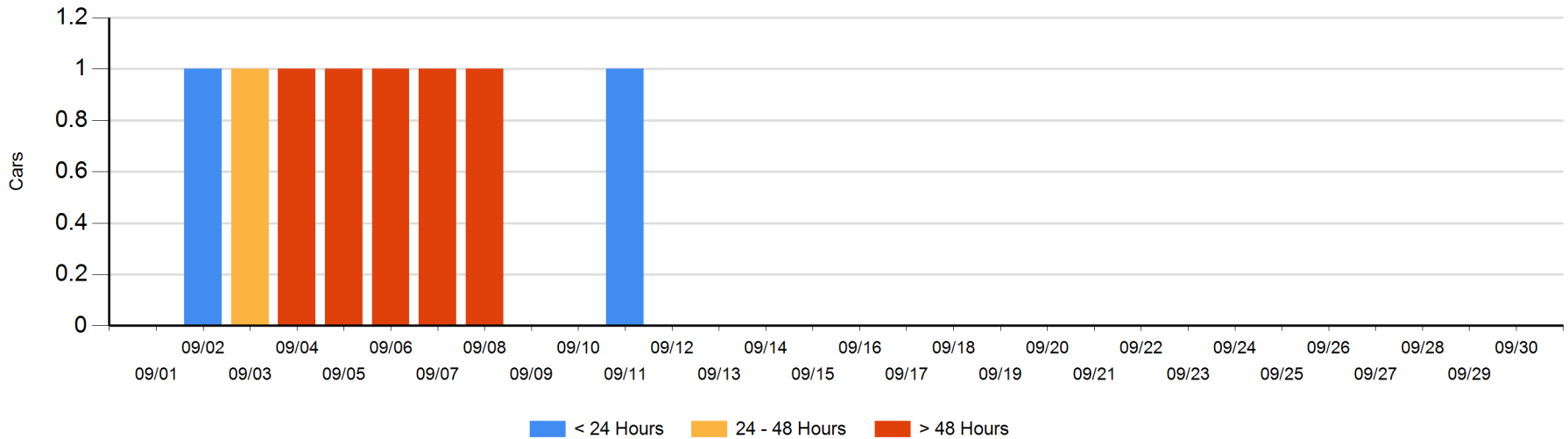
**Today**

	< 24 Hrs	24 - 48 Hrs	> 48-72 Hrs	> 72 Hrs	Total On Hand
CN					0

**Change in Last 24 Hours**

	< 24 Hrs	24-48 Hrs	48 - 72 Hrs	> 72 Hrs
CN				

Loaded Cars on Hand Prince Rupert Waiting for Placement - Last 30 Days All Railways



**Port Terminal Status**

**Thunder Bay**

Daily Activity for 9/30/2019

	Cars Arrived	Cars Received in Interchange	Cars Delivered in Interchange	Cars Placed for Unloading	Loads on Wheels at Destination As of 9/30/2019
CN	200			168	297
CP	271			143	478

**Port Unloads**

	09/30	09/29	Week To Date	Last Week
CN	44	32	44	617
CP	255	68	255	1,135

**Age Profile of Loaded Cars Waiting Placement for Unloading**

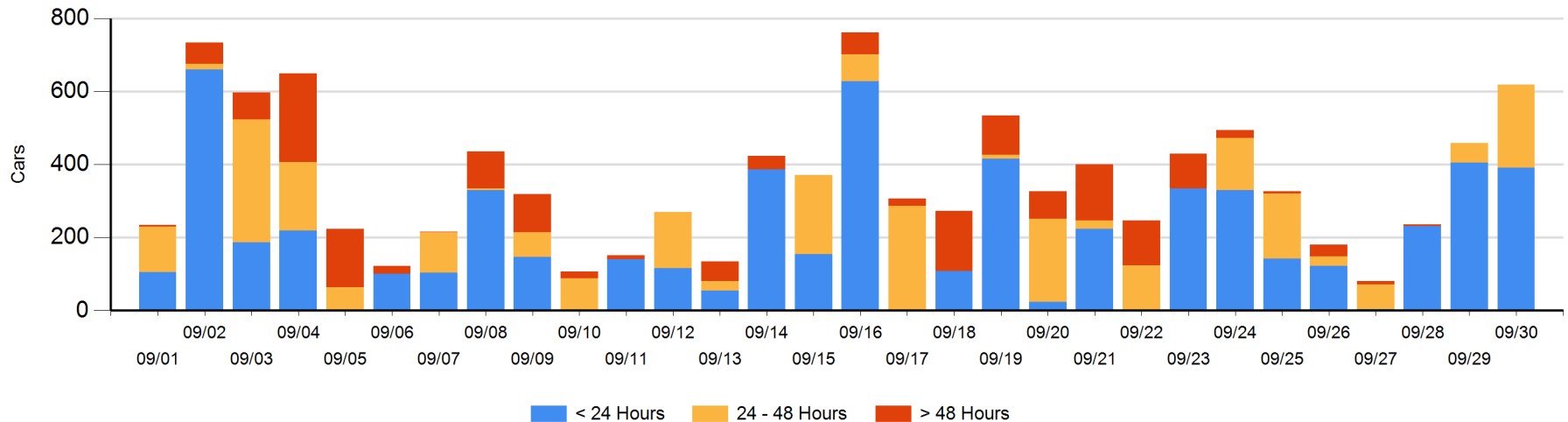
**Today**

	< 24 Hrs	24 - 48 Hrs	> 48-72 Hrs	> 72 Hrs	Total On Hand
CN	120	26			146
CP	271	202			473

**Change in Last 24 Hours**

	< 24 Hrs	24-48 Hrs	48 - 72 Hrs	> 72 Hrs
CN	6	26		
CP	-20	148		

Loaded Cars on Hand Thunder Bay Waiting for Placement - Last 30 Days All Railways



## Measurement Definitions

Loads on Wheels	<p>Count of loaded rail cars including all rail cars that have been released loaded at origin and have not been reported by the railway as unloaded at destination.</p> <p>Counts include all rail cars (hopper cars and boxcars) moving within a pipeline.</p>
Loads Not Moving	<p>Loaded rail cars for which the railways have not reported a movement event for 48 hours or more whether the rail car is at origin, enroute or at destination.</p>
Port Unloads	<p>Count of rail cars reported by railways as unloaded at the western port destinations of Vancouver, Prince Rupert and Thunder Bay.</p> <p>Unload counts include all rail cars (hopper cars and boxcars) unloaded by all receivers including major port terminals, transloaders and other receivers.</p>
Cars Arrived	<p>Count of rail cars reported as arrived at the destination railway terminal.</p>
Cars Received in Interchange	<p>Count of rail cars received in interchange by each railway within a destination railway terminal. Interchange activity is tracked for the Vancouver and Thunder Bay pipelines as applicable.</p>
Cars Delivered in Interchange	<p>Count of rail cars delivered in interchange by each railway within a destination railway terminal. Interchange activity is tracked for the Vancouver and Thunder Bay pipelines as applicable.</p>
Cars Placed for Unloading	<p>Count of rail cars reported by the railways as placed loaded at the receiver's facility for unloading.</p>
Loads on Wheels at Destination	<p>Count of rail cars that remain under load within the destination railway terminal including rail cars that have been reported as placed for unloading but not yet reported as unloaded.</p>
Waiting Placement for Unloading	<p>Count of rail cars that have been reported as arrived at the destination railway terminal but not reported as placed for unloading by the railway.</p> <p>For the Ports of Vancouver, Prince Rupert and Thunder Bay the count of rail cars waiting placement for unloading is categorized by age – i.e. the elapsed time from arrival at destination to the current report date.</p>