

## Loads on Wheels

- Loads on wheels increased modestly (164 cars) overnight remaining below the 11,000 car threshold for the second consecutive day - loads on wheels now at 10,981 - 2% above the trailing 30 day average
- Higher loads on wheels reflects a decline on CN (-147) and an increase on CP (+442) offset by declines on US and shortline carriers who previously had traffic interchanged to them by CN or CP.
- On a net basis the overall increase is attributable primarily to increases in the Vancouver corridor (+314) for CP and the Prince Rupert corridor (+82) for CN.
- Volumes declined in 3 of 5 corridors for CN led by Thunder Bay (-176) offset by an increase in the Prince Rupert corridor. System wide CN loads on wheels now at 5,367 - 4% above the trailing 30 day average.
- Higher CP volumes reflect primarily increases in the Vancouver and US corridors with little change seen in other corridors. CP system wide loads on wheels now at 5,133 - in line with the trailing 30 day average.
- Vancouver now at 6,140 returning above the 6,000 car threshold for the 24th time in the last 30 days - loads on wheels are now 5% below the trailing 30 day average.
- The Prince Rupert pipeline currently sits at 1,506 - the highest level in the last 30 days - now 21% above the trailing 30 day average.
- Thunder Bay volumes declined 16% overnight reflecting lower volumes on both railways - remains above 1,100 cars. The current pipeline has traffic split almost evenly between the two railways.

## Hopper Car Rationing

- CN rationed 659 cars in week 35 - a 70% increase from the prior week. Early indications are that rationing is continuing in weeks 36 and 37 although the level of such rationing is not yet known.

## Loads Not Moving

- **The count of cars not moving for 48+ hours on CN and CP declined by 18% (556 cars) overnight with 97% of the decrease attributable to CN while CP counts remained largely unchanged. The count of idle cars now stands at 2,529 - above the 2,400 car mark for the 29th time in the last 30 days.**
- CN
  - **The count of idle cars declined by 43% (537 cars) in the prior 24 hours following three consecutive days of increase that as of yesterday had counts rising to nearly 1,300 cars. Idle cars on CN now at 706 - the lowest level in the last 9 days.**
  - The number of cars idle for 4+ days declined by 50% and now sits below 300 cars.
  - The count of cars not moving for 7+ days declined marginally overnight - remains above 50 cars.
  - Vancouver destined traffic represents 48% of all idle cars with 52% of all idle cars currently dwelling at origin.
- CP
  - **CP counts declined nominally overnight and remain above 1,800 cars. The count of idle cars on CP is now 1,823 below the 2,000 car threshold for the 3rd consecutive day.**
  - The number of cars idle for 4+ days declined marginally overnight and remains above 900 cars.
  - The count of cars idle for 7+ days increased slightly overnight - now 350 cars.
  - The count of idle cars in the Vancouver corridor continues to account for 83% of all idle cars on CP. Thunder Bay counts remain below 100 cars accounting for only 4% of all idle cars.
  - In total 92% of all idle cars are dwelling at origin locations - as has been the case for much of the past 30 days.

---

## Port Performance

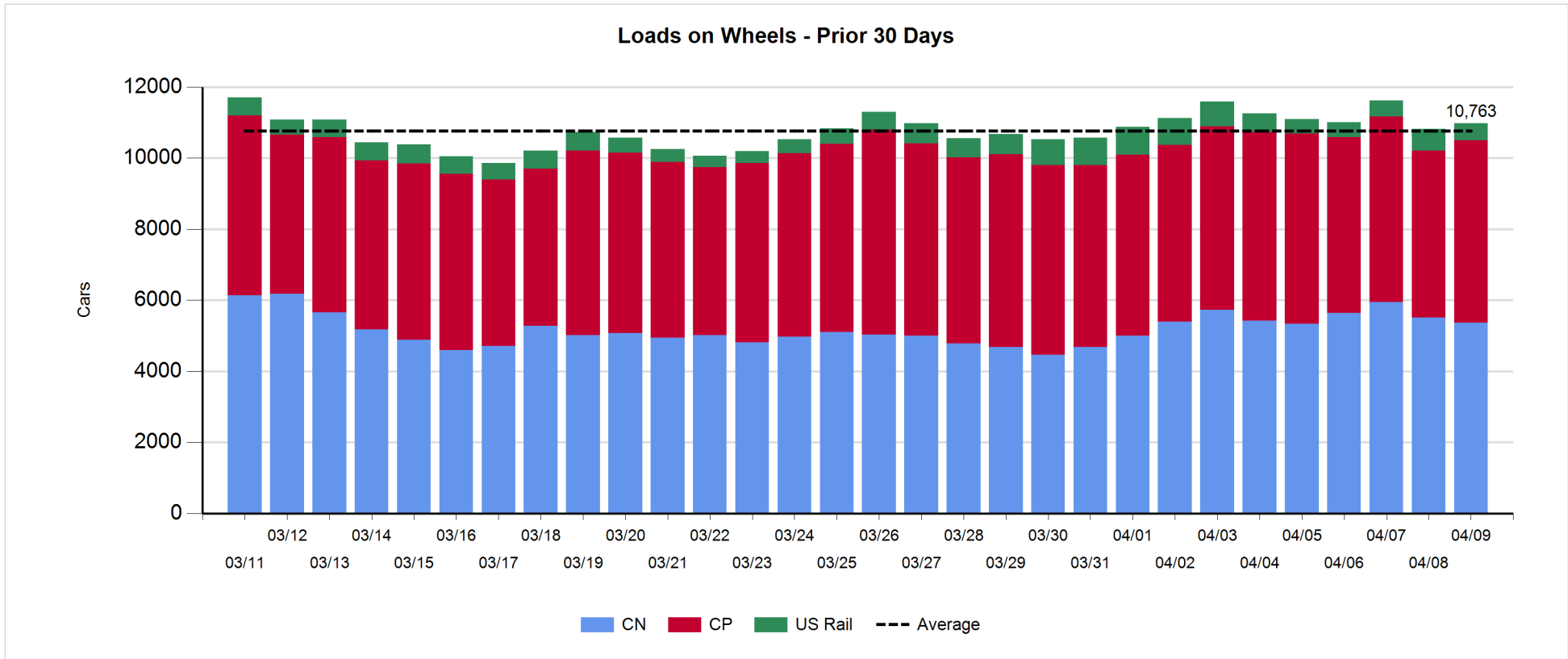
- CN and CP reported a total of 1,305 cars unloaded at the three western ports - slightly higher than Monday of last week reflecting higher unloads at Prince Rupert and Thunder Bay and lower unloads at Vancouver.
- Vancouver
  - 712 cars reported unloaded by CN and CP at the Port of Vancouver; CN - 413 and CP - 299
  - There are approximately 800 cars on hand at Vancouver waiting placement for unloading - with only 544 cars arriving at the port in the last 24 hours.
  - CN and CP have 1,200+ cars enroute to Vancouver west of Alberta with 60% of traffic currently moving on CN; 44% (2,700) of all cars destined to Vancouver are currently at origin locations awaiting movement with 1,600 of these - 89% of which are situated on CP lines - not having moved for 48+ hours.
- Prince Rupert
  - Prince Rupert unloads began the week with more than 280 unloads slightly higher than Monday of last week.
  - Loads on wheels are currently above the 1,500 car mark - the highest level seen in the prior 30 days.
  - There are currently only 100 cars west of Jasper - all west of Prince George - with 400 cars between Edmonton and Jasper. With less than 100 cars on site the timely movement of cars currently east of Jasper will determine whether desired unload levels can be supported over the course of the next few days.

**Daily Loads on Wheels - 4/9/2018**

	E Canada	Prince Rupert	Thunder Bay	USA/MEX	Vancouver	Total
CN	460	1,506	542	306	2,553	5,367
CP	186		596	816	3,535	5,133
Short Line	55				52	107
US Rail				374		374
	701	1,506	1,138	1,496	6,140	10,981

**Change in Loads on Wheels - Prior 24 Hours**

	E Canada	Prince Rupert	Thunder Bay	USA/MEX	Vancouver	Total
CN	22	82	-176	-51	-24	-147
CP	43		-39	124	314	442
Short Line	-74				3	-71
US Rail				-60		-60
	-9	82	-215	13	293	164



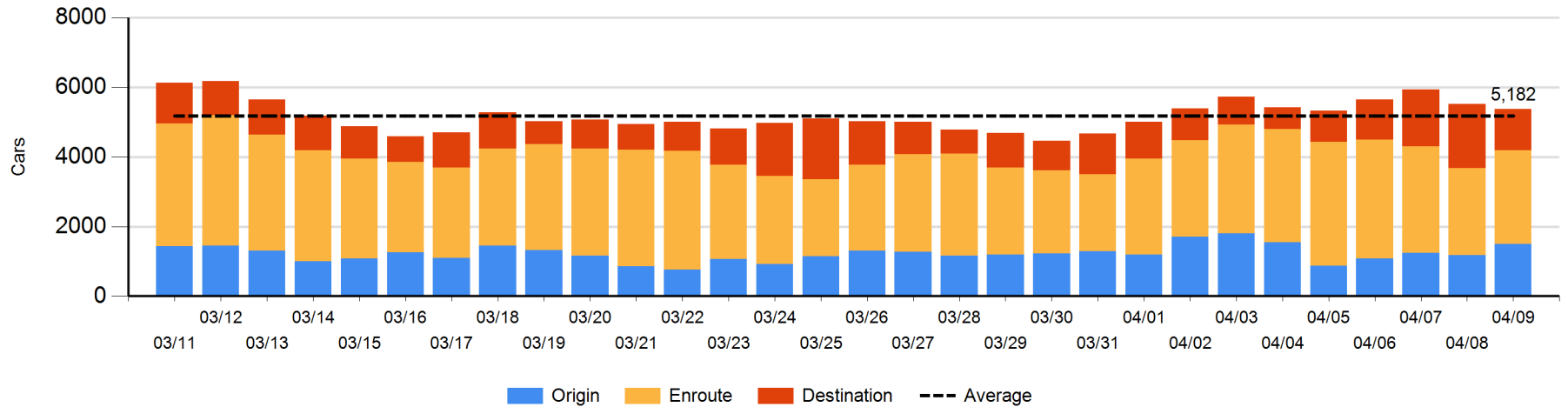
**Daily Loads on Wheels By Pipeline Location - 4/9/2018**

	E Canada	Prince Rupert	Thunder Bay	USA/MEX	Vancouver	Total
CN						
Origin	66	623	102	32	679	1,502
Enroute	302	798	74	258	1,263	2,695
Destination	92	85	366	16	612	1,171
	460	1,506	542	306	2,554	5,368
CP						
Origin	66		103	377	2,005	2,551
Enroute	64		360	418	1,081	1,923
Destination	56		133	21	449	659
	186		596	816	3,535	5,133
US Rail / Short Line						
Origin						
Enroute	12			200		212
Destination	43			174	52	269
	55			374	52	481

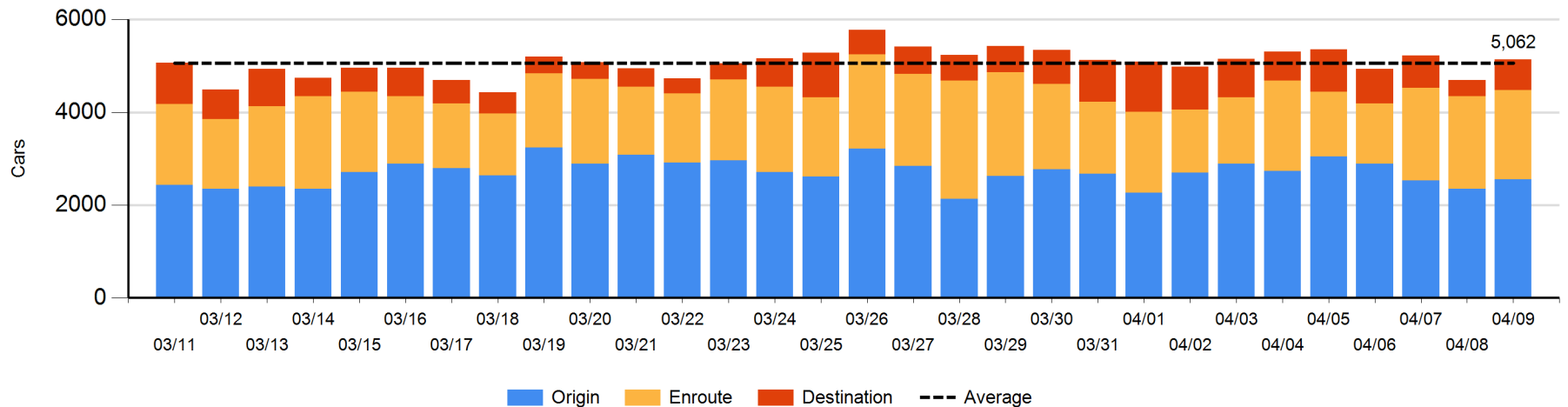
**Change in Daily Loads on Wheels By Pipeline Location - Prior 24 Hours**

	E Canada	Prince Rupert	Thunder Bay	USA/MEX	Vancouver	Total
CN						
Origin	35	154	4	6	133	332
Enroute	-35	81	-97	-17	257	189
Destination	22	-153	-83	-40	-414	-668
	22	82	-176	-51	-24	-147
CP						
Origin	-10		-134	119	224	199
Enroute	-3		83	-1	-150	-71
Destination	56		12	6	240	314
	43		-39	124	314	442
US Rail / Short Line						
Origin	-5					-5
Enroute	-65			-45		-110
Destination	-4			-15	3	-16
	-74			-60	3	-131

**CN Loads on Wheels by Pipeline Location - 4/9/2018**



**CP Loads on Wheels by Pipeline Location - 4/9/2018**

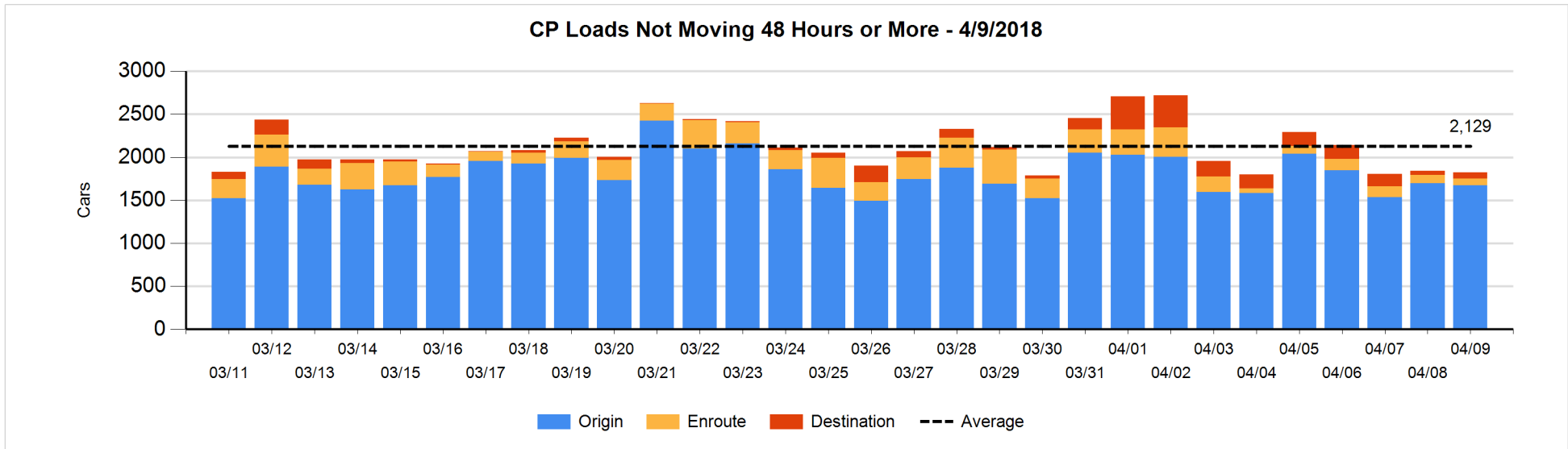
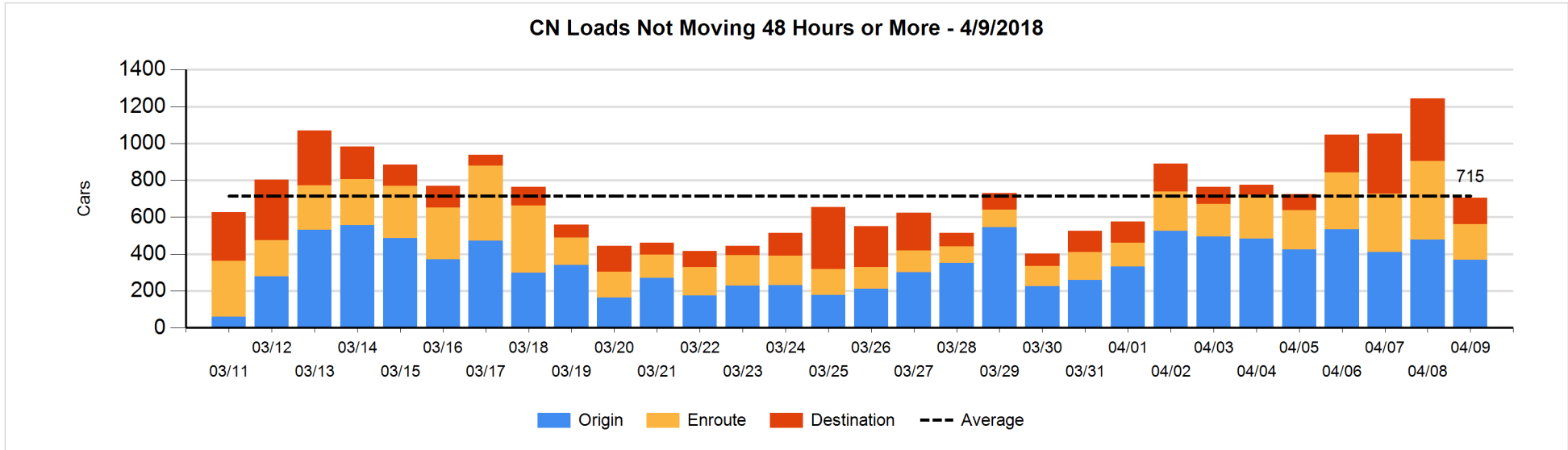


**Loads Not Moving 48 Hours or More - 4/9/2018**

	E Canada	Prince Rupert	Thunder Bay	USA/MEX	Vancouver	Total
<b>CN</b>						
Origin	1	70	98	26	173	368
Enroute	30	4	6	66	88	194
Destination	22	27	3	14	78	144
	53	101	107	106	339	706
<b>CP</b>						
Origin	12		22	189	1450	1673
Enroute	1		18	19	41	79
Destination			42		29	71
	13		82	208	1520	1823
<b>US Rail / Short Line</b>						
Origin						
Enroute	7			23		30
Destination	18			46	11	75
	25			69	11	105

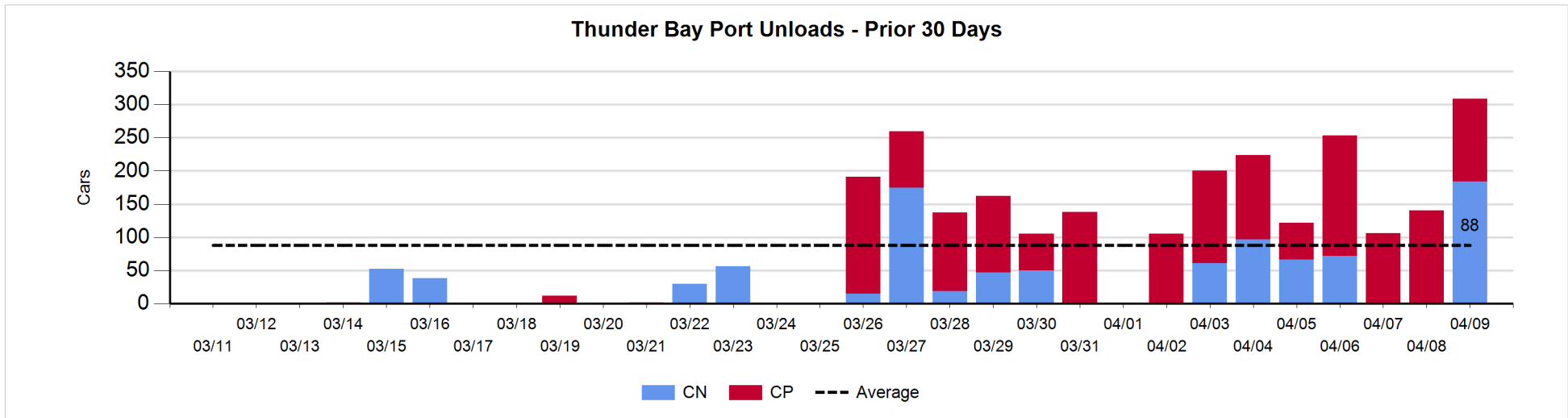
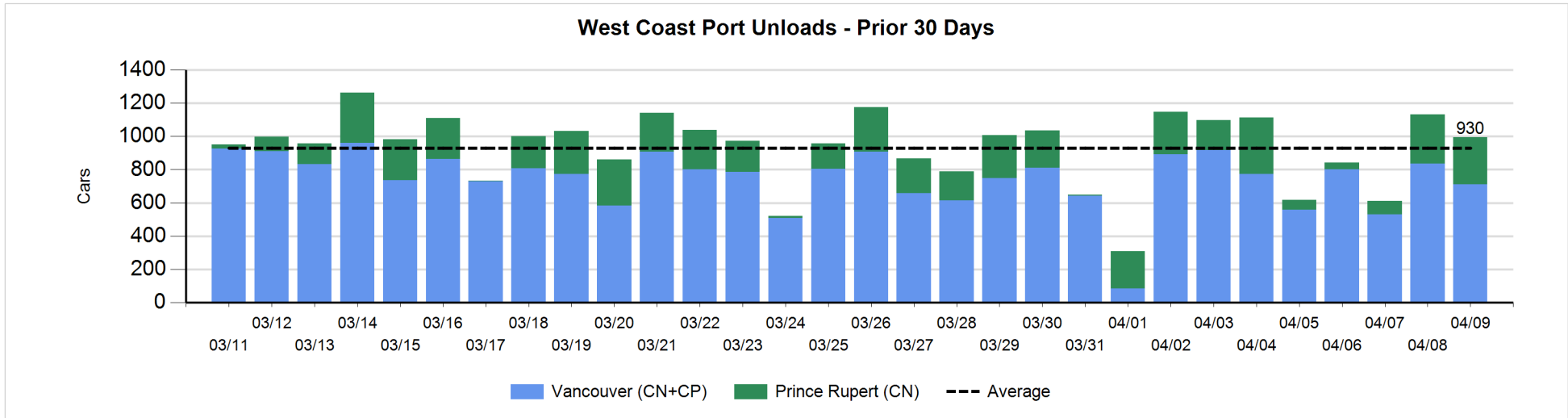
**Change in Loads Not Moving 48 Hours or More - 4/9/2018**

	E Canada	Prince Rupert	Thunder Bay	USA/MEX	Vancouver	Total
<b>CN</b>						
Origin	-30	-45	0	9	-43	-109
Enroute	-31	-12	6	-47	-150	-234
Destination	-21	3	-1	-23	-152	-194
	-82	-54	5	-61	-345	-537
<b>CP</b>						
Origin	-64		-48	76	11	-25
Enroute	0		-6	-7	-3	-16
Destination			33	-15	4	22
	-64		-21	54	12	-19
<b>US Rail / Short Line</b>						
Origin						
Enroute	-20			-6		-26
Destination	-6			-44	-10	-60
	-26			-50	-10	-86



Port Unloads - 4/9/2018

	Prince Rupert	Vancouver	West Coast Total	Thunder Bay	Total
CN	284	413	697	184	881
CP		299	299	125	424
	284	712	996	309	1,305





**Port Terminal Status**

**Vancouver**

Daily Activity for 4/9/2018

	Cars Arrived	Cars Received in Interchange	Cars Delivered in Interchange	Cars Placed for Unloading	Loads on Wheels at Destination As of 4/9/2018
CN	79	115	6	453	612
CP	465		121	382	449
SRY		12			52

**Port Unloads**

	04/09	04/08	Week To Date	Last Week
CN	413	409	413	2,547
CP	299	428	299	2,764
SRY	3	1	3	62

**Age Profile of Loaded Cars Waiting Placement for Unloading**

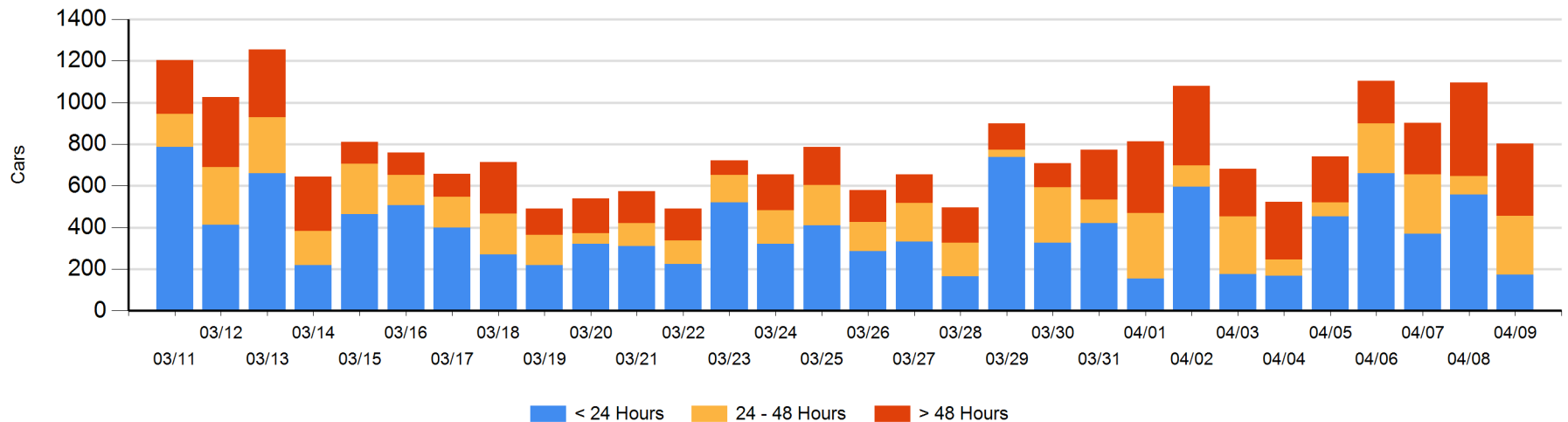
**Today**

	< 24 Hrs	24 - 48 Hrs	> 48-72 Hrs	> 72 Hrs	Total On Hand
CN	79	96	46	191	412
CP	94	188		109	391
SRY					0

**Change in Last 24 Hours**

	< 24 Hrs	24-48 Hrs	48 - 72 Hrs	> 72 Hrs
CN	-226	48	-187	138
CP	-158	145	-54	1
SRY				

**Loaded Cars on Hand Vancouver Waiting for Placement - Last 30 Days All Railways**



**Port Terminal Status**

**Prince Rupert**

Daily Activity for 4/9/2018

	Cars Arrived	Cars Received in Interchange	Cars Delivered in Interchange	Cars Placed for Unloading	Loads on Wheels at Destination As of 4/9/2018
CN	136			138	85

**Port Unloads**

	04/09	04/08	Week To Date	Last Week
CN	284	294	284	1,245

**Age Profile of Loaded Cars Waiting Placement for Unloading**

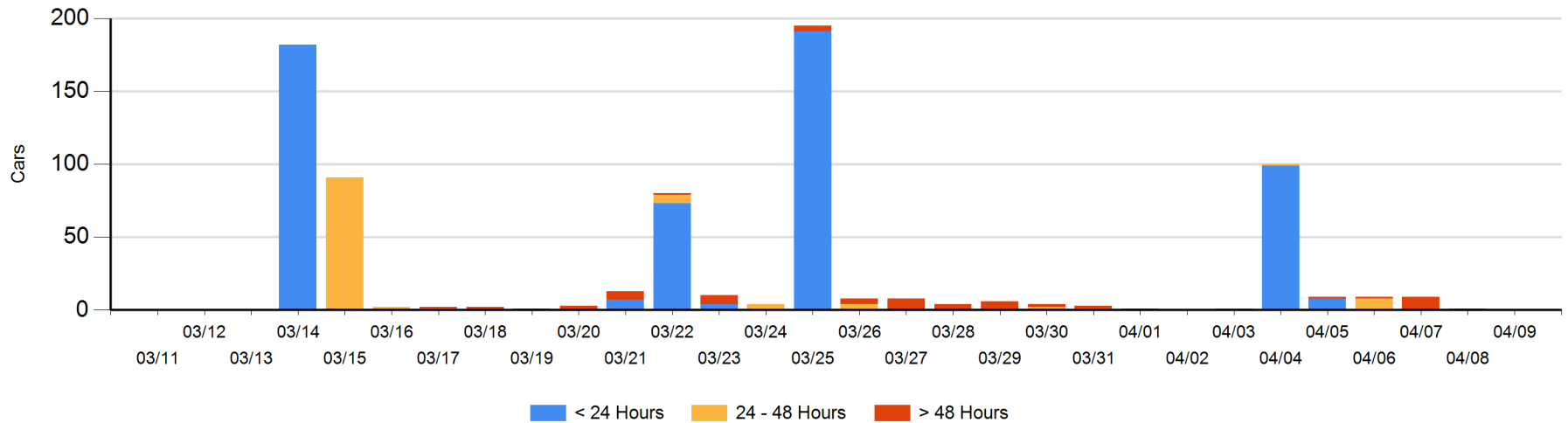
**Today**

	< 24 Hrs	24 - 48 Hrs	> 48-72 Hrs	> 72 Hrs	Total On Hand
CN					0

**Change in Last 24 Hours**

	< 24 Hrs	24-48 Hrs	48 - 72 Hrs	> 72 Hrs
CN				-1

Loaded Cars on Hand Prince Rupert Waiting for Placement - Last 30 Days All Railways



**Port Terminal Status**

**Thunder Bay**

**Daily Activity for 4/9/2018**

	Cars Arrived	Cars Received in Interchange	Cars Delivered in Interchange	Cars Placed for Unloading	Loads on Wheels at Destination As of 4/9/2018
CN	101			203	366
CP	137			120	133

**Port Unloads**

	04/09	04/08	Week To Date	Last Week
CN	184		184	296
CP	125	140	125	854

**Age Profile of Loaded Cars Waiting Placement for Unloading**

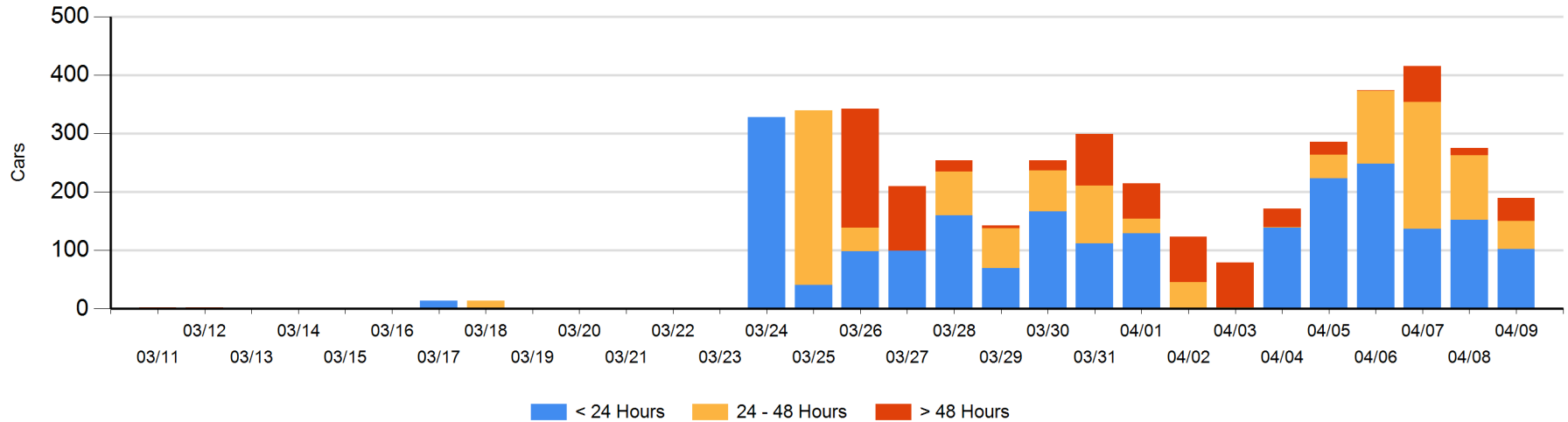
**Today**

	< 24 Hrs	24 - 48 Hrs	> 48-72 Hrs	> 72 Hrs	Total On Hand
CN	46	14			60
CP	56	34	38	2	130

**Change in Last 24 Hours**

	< 24 Hrs	24-48 Hrs	48 - 72 Hrs	> 72 Hrs
CN	-106	14	-10	
CP	56	-77	36	2

**Loaded Cars on Hand Thunder Bay Waiting for Placement - Last 30 Days All Railways**



## Measurement Definitions

Loads on Wheels	<p>Count of loaded rail cars including all rail cars that have been released loaded at origin and have not been reported by the railway as unloaded at destination.</p> <p>Counts include all rail cars (hopper cars and boxcars) moving within a pipeline.</p>
Loads Not Moving	<p>Loaded rail cars for which the railways have not reported a movement event for 48 hours or more whether the rail car is at origin, enroute or at destination.</p>
Port Unloads	<p>Count of rail cars reported by railways as unloaded at the western port destinations of Vancouver, Prince Rupert and Thunder Bay.</p> <p>Unload counts include all rail cars (hopper cars and boxcars) unloaded by all receivers including major port terminals, transloaders and other receivers.</p>
Cars Arrived	<p>Count of rail cars reported as arrived at the destination railway terminal.</p>
Cars Received in Interchange	<p>Count of rail cars received in interchange by each railway within a destination railway terminal. Interchange activity is tracked for the Vancouver and Thunder Bay pipelines as applicable.</p>
Cars Delivered in Interchange	<p>Count of rail cars delivered in interchange by each railway within a destination railway terminal. Interchange activity is tracked for the Vancouver and Thunder Bay pipelines as applicable.</p>
Cars Placed for Unloading	<p>Count of rail cars reported by the railways as placed loaded at the receiver's facility for unloading.</p>
Loads on Wheels at Destination	<p>Count of rail cars that remain under load within the destination railway terminal including rail cars that have been reported as placed for unloading but not yet reported as unloaded.</p>
Waiting Placement for Unloading	<p>Count of rail cars that have been reported as arrived at the destination railway terminal but not reported as placed for unloading by the railway.</p> <p>For the Ports of Vancouver, Prince Rupert and Thunder Bay the count of rail cars waiting placement for unloading is categorized by age – i.e. the elapsed time from arrival at destination to the current report date.</p>