

Note: Effective with the report for November 27, 2017 the Daily Network Status Report reflects performance and data for the prior day removing the 24 hour lag time which was in place for reporting previously.

Loads on Wheels

- System wide loads on wheels increased slightly in the prior 24 hours - loads now at 11,014 - in line with the trailing 30 day average
- In total loads on wheels increased by 141 cars reflecting little change in CN volumes (+16) and a slight increase in CP volumes (+149).
- CN volumes changed nominally in all corridors with Prince Rupert and Vancouver up slightly offset by minor declines in the USA and Eastern Canada corridors. System wide CN loads on wheels are now at 5,911 - 7% higher than the trailing 30 day average.
- CP volumes increased in the Vancouver (+187) and USA (+80) corridors offset by a decline in traffic in the Thunder Bay corridor (-115). System wide loads at 4,834 - 6% below the trailing 30 day average.
- Vancouver now at 5,869, Prince Rupert at 1,117 - highest level in the prior 14 days - and Thunder Bay at 2,473 - 47% higher than the trailing 30 day average.

Loads Not Moving

- The count of loaded cars not moving on CN and CP for 48 hours or more declined significantly (-654) in the prior 24 hours; total cars on CN and CP not moving for 48 hours now at 2,291.
- CN
 - The count of cars not moving declined by 117 cars on a net basis in the prior 24 hours - loads on wheels now idle for 48 hours or more at 893 with 70% of these cars destined to Vancouver .
 - Counts declined in all corridors other than Thunder Bay which rose nominally (+59).
 - 22% of cars (198) are dwelling at origin locations while the majority of cars (491) are dwelling on line - of these 70% are destined to Vancouver of which 90% are dwelling at locations west of Jasper.
- CP
 - CP counts declined significantly (-537) reflecting substantial declines in both the Thunder Bay (-156) and Vancouver (-411) corridors - idle cars now at 1,398; the lowest level in the prior 3 weeks.
 - The majority of cars (77%) continue to dwell at origin - 1,200 cars. This consists principally of 509 cars destined to Vancouver and 633 cars destined to Thunder Bay.

Port Performance

- CN and CP unloaded a total of 1,264 cars at the three western ports some 5% lower than average Monday performance in the prior 30 days but 10% better than the same day last week.
- Prince Rupert and Thunder Bay are tracking ahead of last week's pace while Vancouver unloads are 20% lower than last week.
- Vancouver
 - Total of 628 cars reported unloaded by CN and CP at the Port of Vancouver; CN - 363 and CP - 265
 - There are currently 747 cars on hand at Vancouver waiting placement for unloading - 228 of these cars arrived at Vancouver more than 72 hours ago.
- Thunder Bay
 - Total of 332 cars reported unloaded by CN and CP in the prior 24 hours
 - Cars at Thunder Bay waiting placement now at 622 - 75% CP. Of the cars waiting for placement on CP, 146 arrived at Thunder Bay more than 72 hours ago.

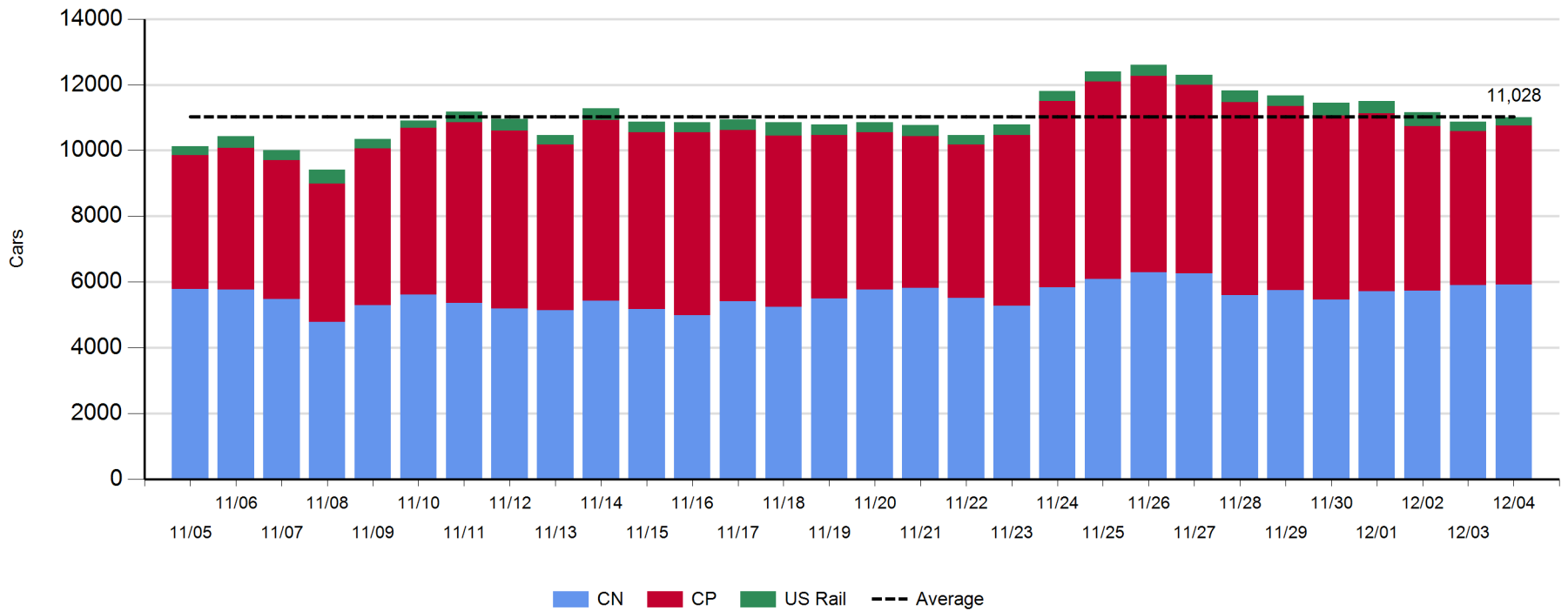
Daily Loads on Wheels - 12/4/2017

	E Canada	Prince Rupert	Thunder Bay	USA/MEX	Vancouver	Total
CN	460	1,117	722	344	3,268	5,911
CP	102		1,751	419	2,562	4,834
Short Line	36				39	75
US Rail				194		194
	598	1,117	2,473	957	5,869	11,014

Change in Loads on Wheels - Prior 24 Hours

	E Canada	Prince Rupert	Thunder Bay	USA/MEX	Vancouver	Total
CN	-21		42	6	-29	18
CP	-3		-115	80		187
Short Line	-21					13
US Rail				-16		-16
	-45	42	-109	35	218	141

Loads on Wheels - Prior 30 Days

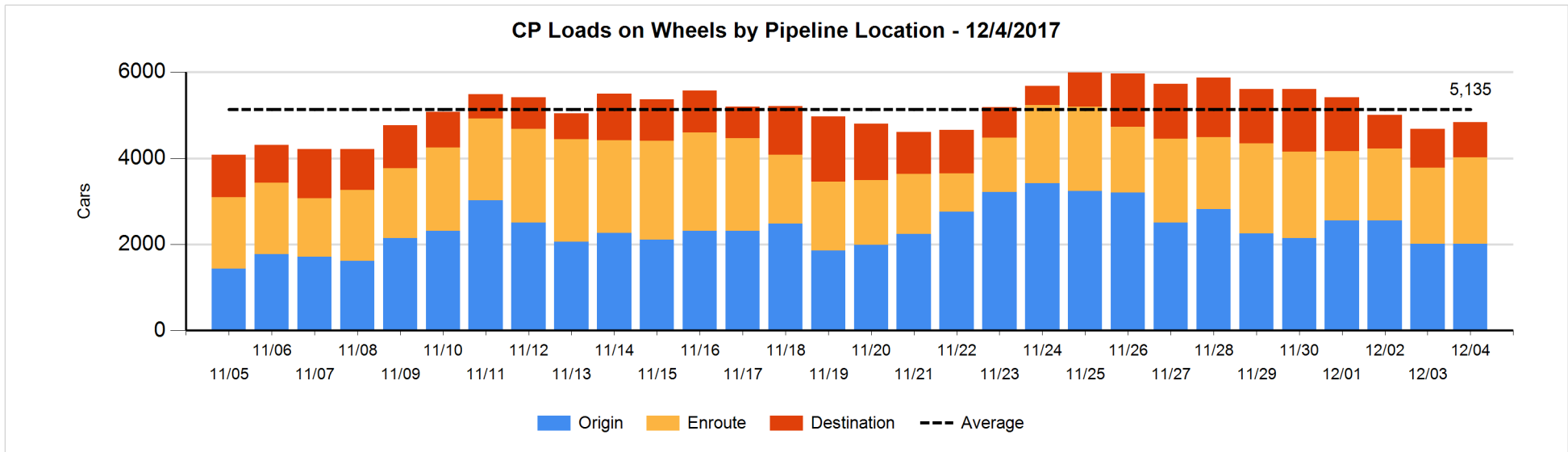
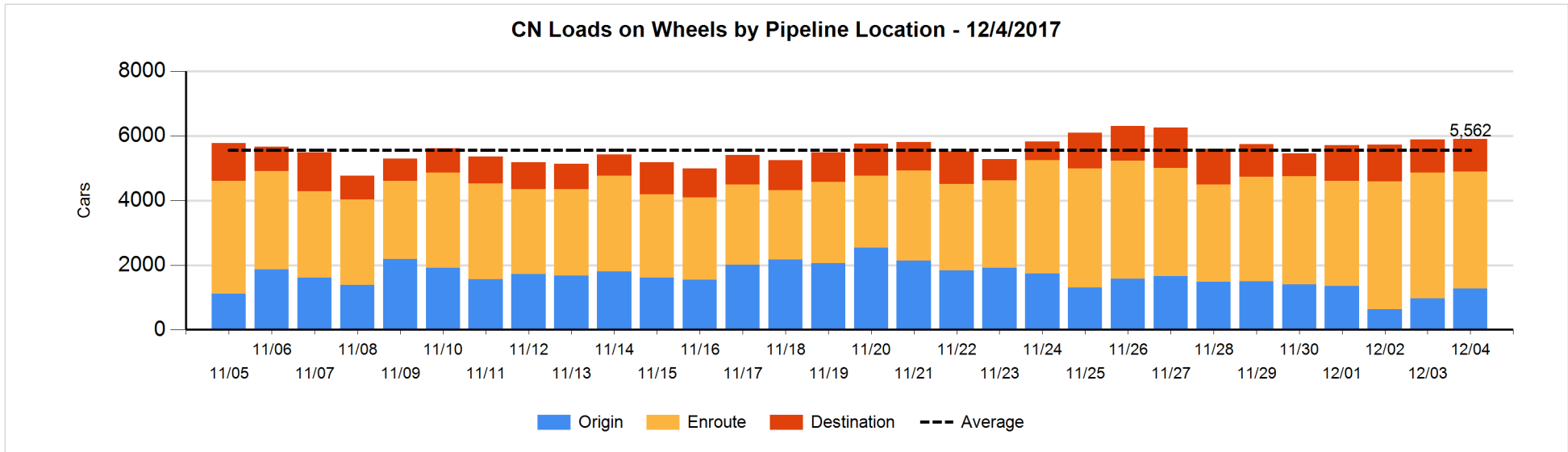


Daily Loads on Wheels By Pipeline Location - 12/4/2017

	E Canada	Prince Rupert	Thunder Bay	USA/MEX	Vancouver	Total
CN						
Origin	26	448	40	6	758	1,278
Enroute	285	610	422	318	1,985	3,620
Destination	149	59	260	20	525	1,013
	460	1,117	722	344	3,268	5,911
CP						
Origin	5		969	161	877	2,012
Enroute	84		274	258	1,397	2,013
Destination	13		508		288	809
	102		1,751	419	2,562	4,834
US Rail / Short Line						
Origin						
Enroute	35			90		125
Destination	1			104	39	144
	36			194	39	269

Change in Daily Loads on Wheels By Pipeline Location - Prior 24 Hours

	E Canada	Prince Rupert	Thunder Bay	USA/MEX	Vancouver	Total
CN						
Origin	-77	248	-162	-45	340	304
Enroute	-5	-69	126	16	-334	-266
Destination	61	-137	42	0	12	-22
	-21	42	6	-29	18	16
CP						
Origin	0		-71	82	-10	1
Enroute	0		-6	11	236	241
Destination	-3		-38	-13	-39	-93
	-3		-115	80	187	149
US Rail / Short Line						
Origin						
Enroute	4			18		22
Destination	-25			-34	13	-46
	-21			-16	13	-24

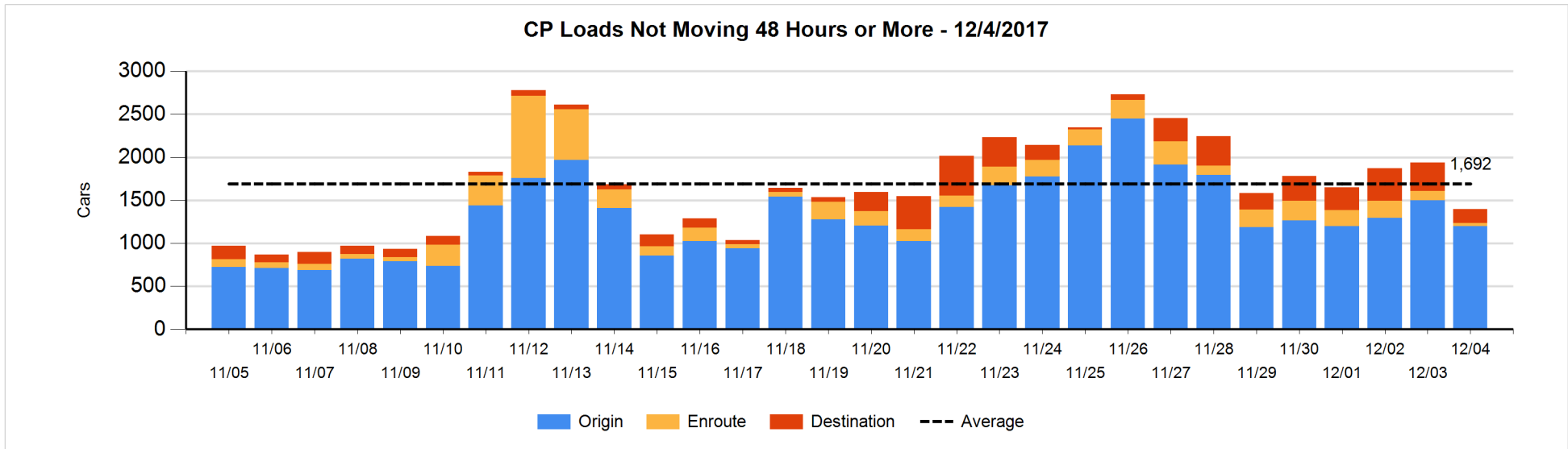
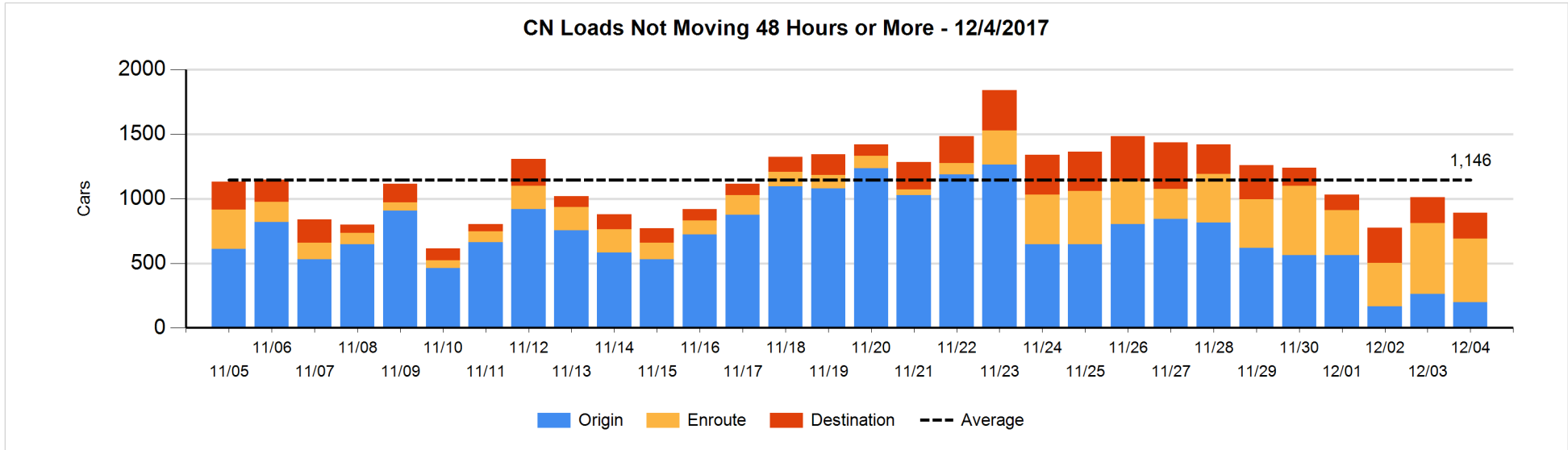


Loads Not Moving 48 Hours or More - 12/4/2017

	E Canada	Prince Rupert	Thunder Bay	USA/MEX	Vancouver	Total
CN						
Origin		99		1	98	198
Enroute	31	16		12	432	491
Destination	39	4	63	9	89	204
	70	119	63	22	619	893
CP						
Origin	3		633	55	509	1200
Enroute	8		1	6	17	32
Destination			162		4	166
	11		796	61	530	1398
US Rail / Short Line						
Origin						
Enroute	25			23		48
Destination	1			76	12	89
	26			99	12	137

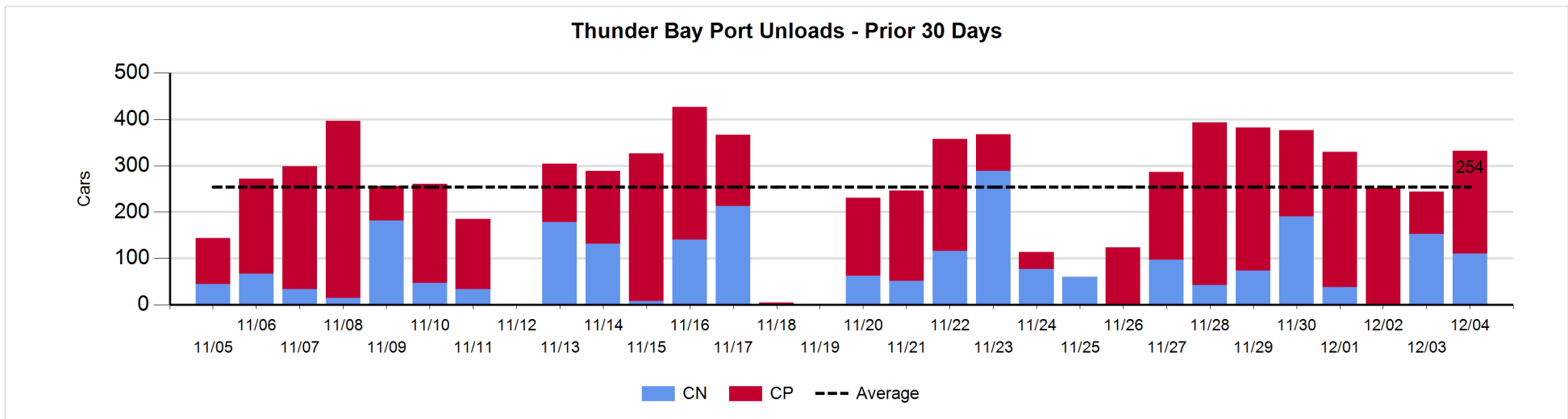
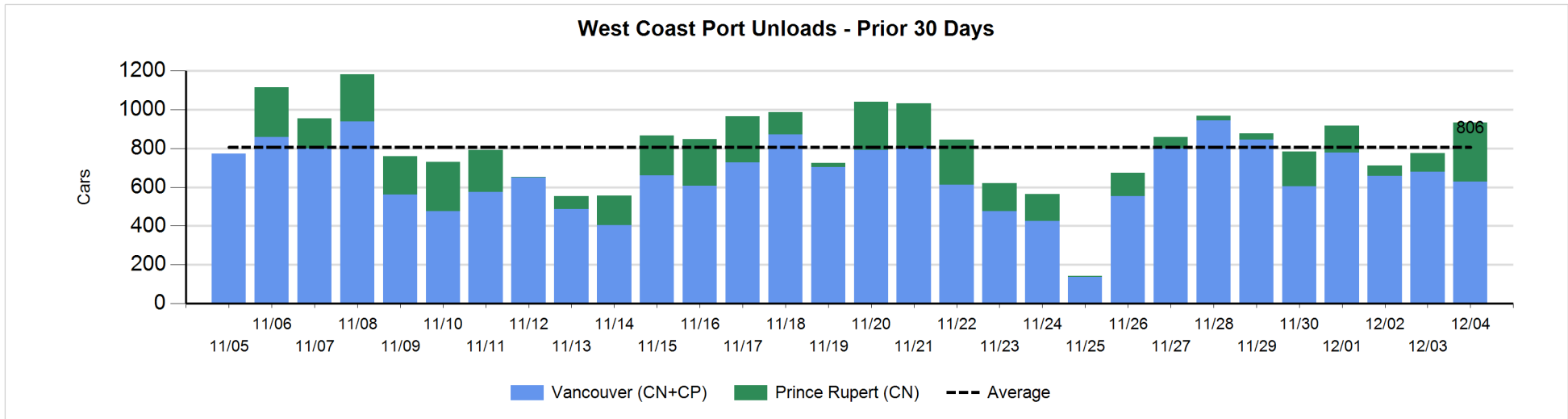
Change in Loads Not Moving 48 Hours or More - 12/4/2017

	E Canada	Prince Rupert	Thunder Bay	USA/MEX	Vancouver	Total
CN						
Origin		0		-50	-13	-63
Enroute	-7	3		-2	-52	-58
Destination	-34	-6	59	-4	-11	4
	-41	-3	59	-56	-76	-117
CP						
Origin	0		-3	28	-325	-300
Enroute	1		1	1	-80	-77
Destination			-154		-6	-160
	1		-156	29	-411	-537
US Rail / Short Line						
Origin						
Enroute	25			-27		-2
Destination	-25			-30	2	-53
	0			-57	2	-55



Port Unloads - 12/4/2017

	Prince Rupert	Vancouver	West Coast Total	Thunder Bay	Total
CN	304	363	667	110	777
CP		265	265	222	487
	304	628	932	332	1,264



Port Terminal Status

Vancouver

Daily Activity for 12/4/2017

	Cars Arrived	Cars Received in Interchange	Cars Delivered in Interchange	Cars Placed for Unloading	Loads on Wheels at Destination As of 12/4/2017
CN	482	27	133	390	525
CP	142	114	47	217	288
SRY	1	39		9	39

Port Unloads

	12/04	12/03	Week To Date	Last Week
CN	363	458	363	2,719
CP	265	220	265	2,585
SRY	9	1	9	41

Age Profile of Loaded Cars Waiting Placement for Unloading

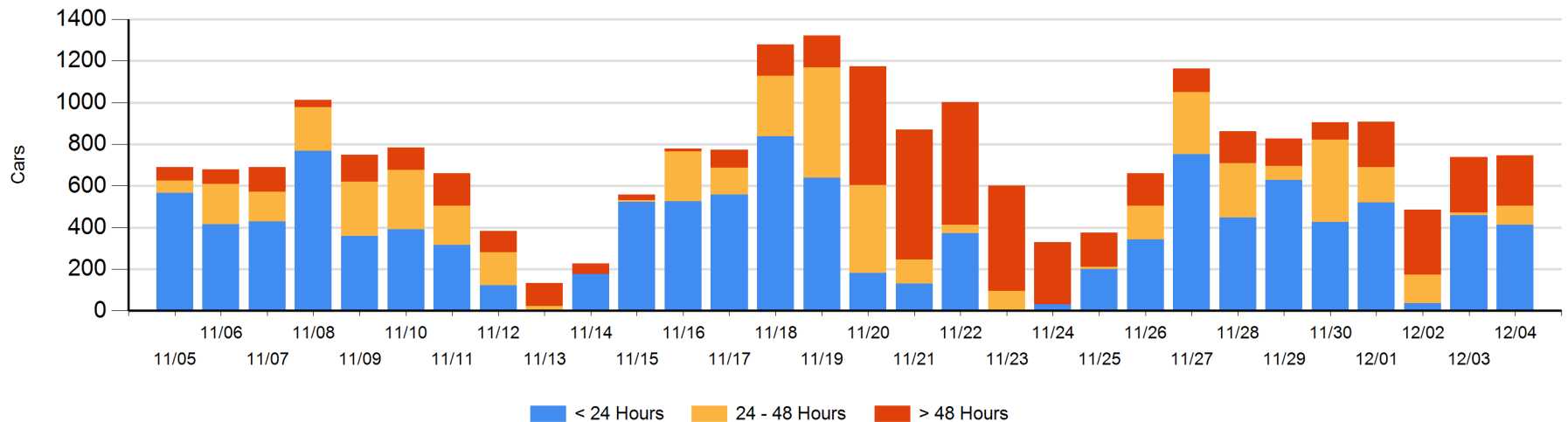
Today

	< 24 Hrs	24 - 48 Hrs	> 48-72 Hrs	> 72 Hrs	Total On Hand
CN	383	22	1	122	528
CP	30	70	13	106	219
SRY					0

Change in Last 24 Hours

	< 24 Hrs	24-48 Hrs	48 - 72 Hrs	> 72 Hrs
CN	199	21	-60	39
CP	-245	57	-5	2
SRY				

Loaded Cars on Hand Vancouver Waiting for Placement - Last 30 Days All Railways



Port Terminal Status

Prince Rupert

Daily Activity for 12/4/2017

	Cars Arrived	Cars Received in Interchange	Cars Delivered in Interchange	Cars Placed for Unloading	Loads on Wheels at Destination As of 12/4/2017
CN	247			246	59

Port Unloads

	12/04	12/03	Week To Date	Last Week
CN	304	97	304	586

Age Profile of Loaded Cars Waiting Placement for Unloading

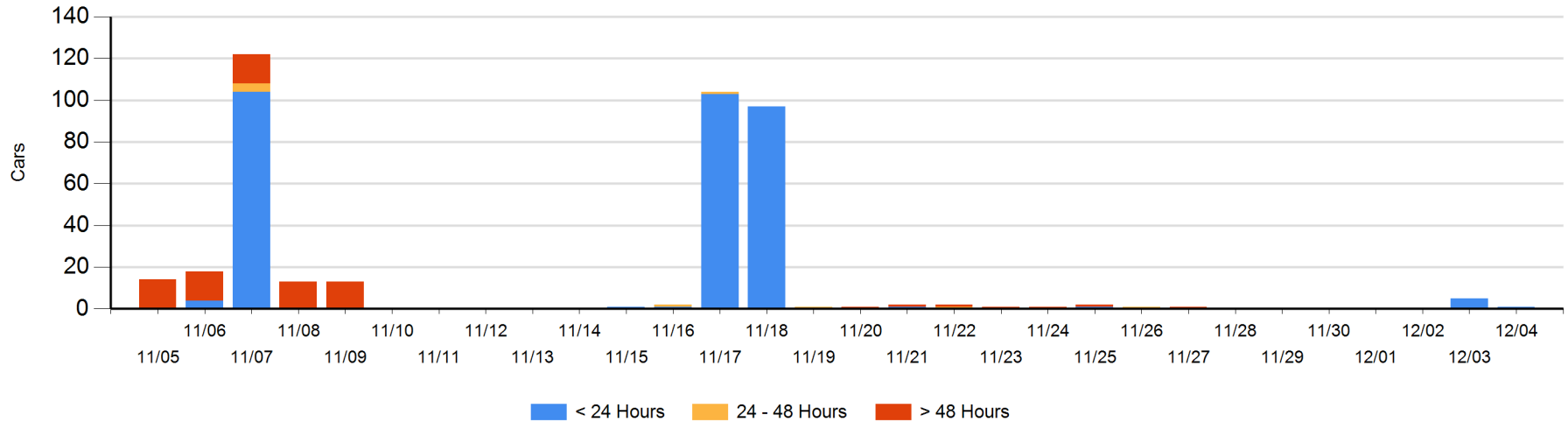
Today

	< 24 Hrs	24 - 48 Hrs	> 48-72 Hrs	> 72 Hrs	Total On Hand
CN	1				1

Change in Last 24 Hours

	< 24 Hrs	24-48 Hrs	48 - 72 Hrs	> 72 Hrs
CN	1			

Loaded Cars on Hand Prince Rupert Waiting for Placement - Last 30 Days All Railways



Port Terminal Status

Thunder Bay

Daily Activity for 12/4/2017

	Cars Arrived	Cars Received in Interchange	Cars Delivered in Interchange	Cars Placed for Unloading	Loads on Wheels at Destination As of 12/4/2017
CN	152			97	260
CP	215			254	508

Port Unloads

	12/04	12/03	Week To Date	Last Week
CN	110	153	110	596
CP	222	91	222	1,667

Age Profile of Loaded Cars Waiting Placement for Unloading

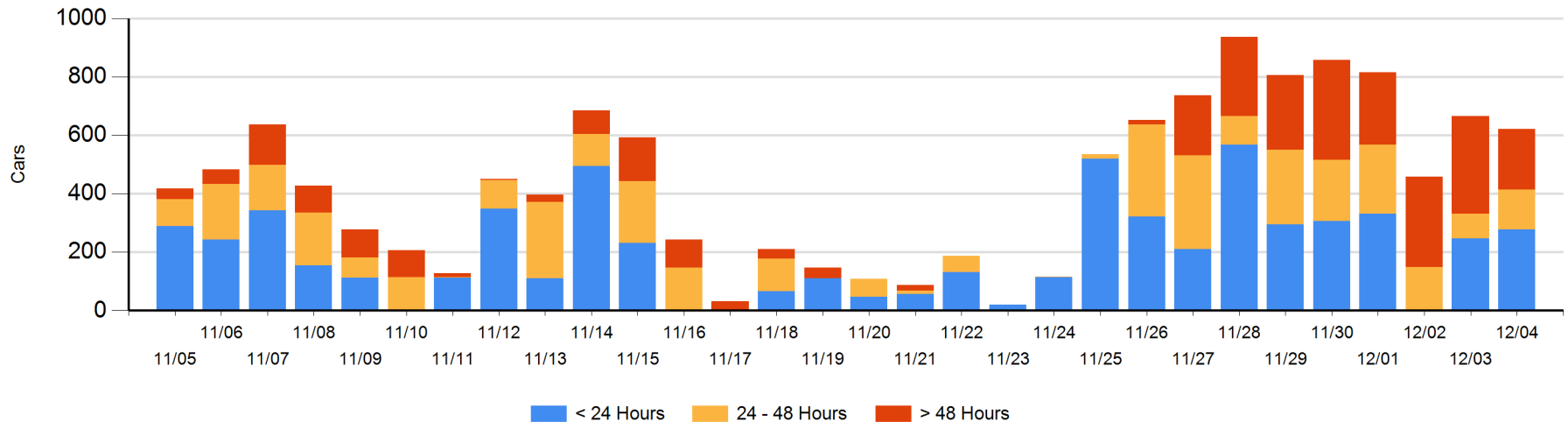
Today

	< 24 Hrs	24 - 48 Hrs	> 48-72 Hrs	> 72 Hrs	Total On Hand
CN	93	10	59	2	164
CP	185	126	1	146	458

Change in Last 24 Hours

	< 24 Hrs	24-48 Hrs	48 - 72 Hrs	> 72 Hrs
CN	83	-74	45	1
CP	-37	124	-132	-40

Loaded Cars on Hand Thunder Bay Waiting for Placement - Last 30 Days All Railways



Measurement Definitions

Loads on Wheels	<p>Count of loaded rail cars including all rail cars that have been released loaded at origin and have not been reported by the railway as unloaded at destination.</p> <p>Counts include all rail cars (hopper cars and boxcars) moving within a pipeline.</p>
Loads Not Moving	<p>Loaded rail cars for which the railways have not reported a movement event for 48 hours or more whether the rail car is at origin, enroute or at destination.</p>
Port Unloads	<p>Count of rail cars reported by railways as unloaded at the western port destinations of Vancouver, Prince Rupert and Thunder Bay.</p> <p>Unload counts include all rail cars (hopper cars and boxcars) unloaded by all receivers including major port terminals, transloaders and other receivers.</p>
Cars Arrived	<p>Count of rail cars reported as arrived at the destination railway terminal.</p>
Cars Received in Interchange	<p>Count of rail cars received in interchange by each railway within a destination railway terminal. Interchange activity is tracked for the Vancouver and Thunder Bay pipelines as applicable.</p>
Cars Delivered in Interchange	<p>Count of rail cars delivered in interchange by each railway within a destination railway terminal. Interchange activity is tracked for the Vancouver and Thunder Bay pipelines as applicable.</p>
Cars Placed for Unloading	<p>Count of rail cars reported by the railways as placed loaded at the receiver's facility for unloading.</p>
Loads on Wheels at Destination	<p>Count of rail cars that remain under load within the destination railway terminal including rail cars that have been reported as placed for unloading but not yet reported as unloaded.</p>
Waiting Placement for Unloading	<p>Count of rail cars that have been reported as arrived at the destination railway terminal but not reported as placed for unloading by the railway.</p> <p>For the Ports of Vancouver, Prince Rupert and Thunder Bay the count of rail cars waiting placement for unloading is categorized by age – i.e. the elapsed time from arrival at destination to the current report date.</p>