

Note: Effective with the report for November 27, 2017 the Daily Network Status Report reflects performance and data for the prior day removing the 24 hour lag time which was in place for reporting previously.

Loads on Wheels

- System wide loads on wheels were unchanged in the prior 24 hours - loads now at 10,535 - 5% lower than the trailing 30 day average
- In total loads on wheels decreased by 2 cars reflecting nominal increases in both CN and CP volumes offset by a decline in cars moving on US carriers.
- CN volumes declined in 2 of 5 corridors led by the Vancouver (-201) and US corridors (-56) offset by increases in the Thunder Bay (+106), Prince Rupert (+126) and Eastern Canada (+60) corridors. System wide CN loads on wheels are now at 5,353 - 4% lower than the trailing 30 day average.
- CP volumes declined in the Thunder Bay corridor (-183) offset by increases in the US (+53) and Vancouver (+188) corridors. System wide loads at 4,885 - 6% below the trailing 30 day average.
- Vancouver now at 5,662, Prince Rupert at 1,030 and Thunder Bay at 2,443 - 36% higher than the trailing 30 day average.

Loads Not Moving

- The count of loaded cars not moving on CN and CP for 48 hours or more increased significantly (+720) in the prior 24 hours; total cars on CN and CP not moving for 48 hours now at 2,471.
- CN
 - The count of cars not moving increased by 102 cars on a net basis in the prior 24 hours - loads on wheels now idle for 48 hours or more at 950 with 70% of these cars destined to Vancouver .
 - Principal change is in the Thunder Bay (+50) and Vancouver (+75) corridors.
 - 72% of cars are destined to Vancouver.
- CP
 - CP counts increased significantly (+618) driven by increases in the Vancouver (+365) and Thunder Bay (+228) corridors - idle cars now at 1,521
 - 77% of cars are dwelling at origin - 1,167 cars. The majority of these cars (794) are destined to Vancouver.

Port Performance

- CN and CP unloaded a total of 1,089 cars at the three western ports - in line with average Thursday performance in the prior 30 days and 6% lower than the same day last week. Through the first 4 days of week 19 western port unloads are tracking at the same pace as last week.
- Prince Rupert continues to track ahead of last week's pace having already exceeded total unloads last week while Vancouver (-9%) and Thunder Bay (-17%) unloads continue to lag as compared to last week.
- Vancouver
 - Total of 620 cars reported unloaded by CN and CP at the Port of Vancouver; CN - 254 and CP - 366
 - There are currently 862 cars on hand at Vancouver waiting placement for unloading -110 of these cars arrived at Vancouver more than 72 hours ago.
- Thunder Bay
 - Total of 364 cars reported unloaded by CN and CP in the prior 24 hours
 - Cars at Thunder Bay waiting placement now at 441; Of these, 201 arrived at Thunder Bay more than 72 hours ago.

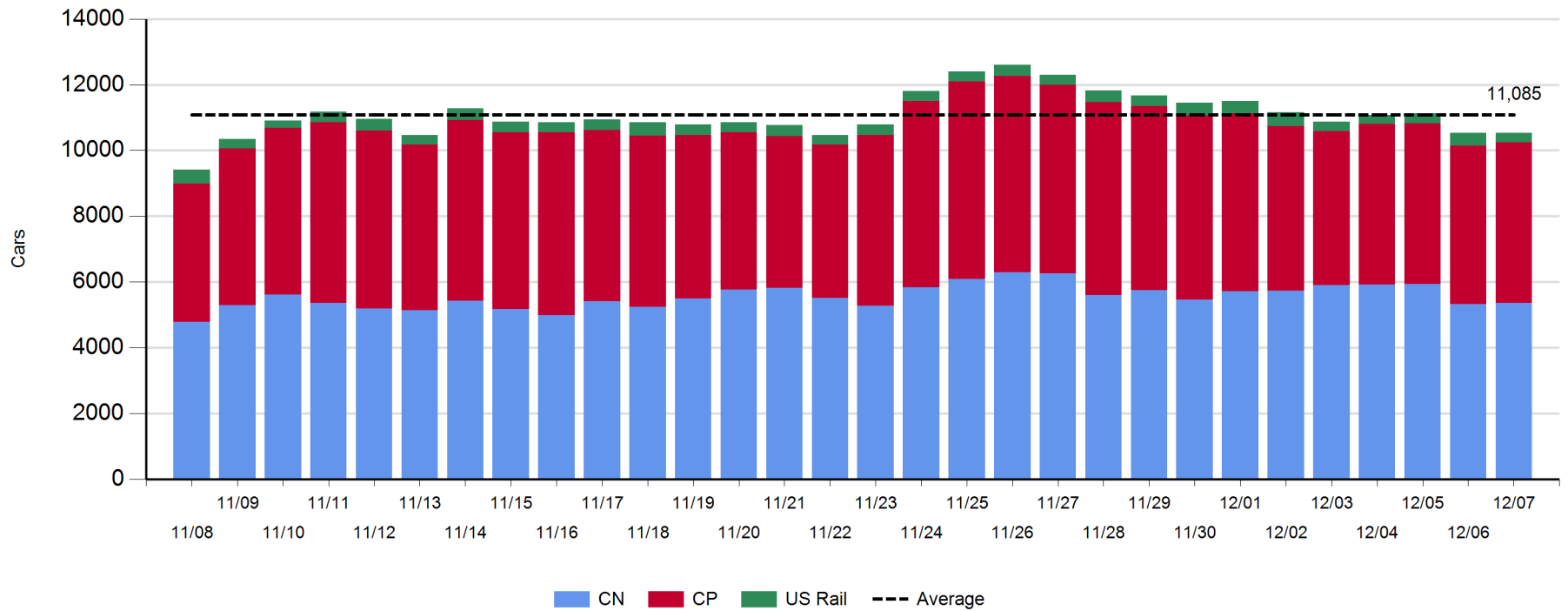
Daily Loads on Wheels - 12/7/2017

| | E Canada | Prince Rupert | Thunder Bay | USA/MEX | Vancouver | Total |
|------------|----------|---------------|-------------|---------|-----------|--------|
| CN | 373 | 1,030 | 689 | 357 | 2,904 | 5,353 |
| CP | 79 | | 1,754 | 335 | 2,717 | 4,885 |
| Short Line | 1 | | | | 41 | 42 |
| US Rail | | | | 255 | | 255 |
| | 453 | 1,030 | 2,443 | 947 | 5,662 | 10,535 |

Change in Loads on Wheels - Prior 24 Hours

| | E Canada | Prince Rupert | Thunder Bay | USA/MEX | Vancouver | Total |
|------------|----------|---------------|-------------|---------|-----------|-------|
| CN | 60 | 126 | 106 | -56 | -201 | 35 |
| CP | -1 | | -183 | 53 | 188 | 57 |
| Short Line | -10 | | | | -2 | -12 |
| US Rail | | | | -82 | | -82 |
| | 49 | 126 | -77 | -85 | -15 | -2 |

Loads on Wheels - Prior 30 Days

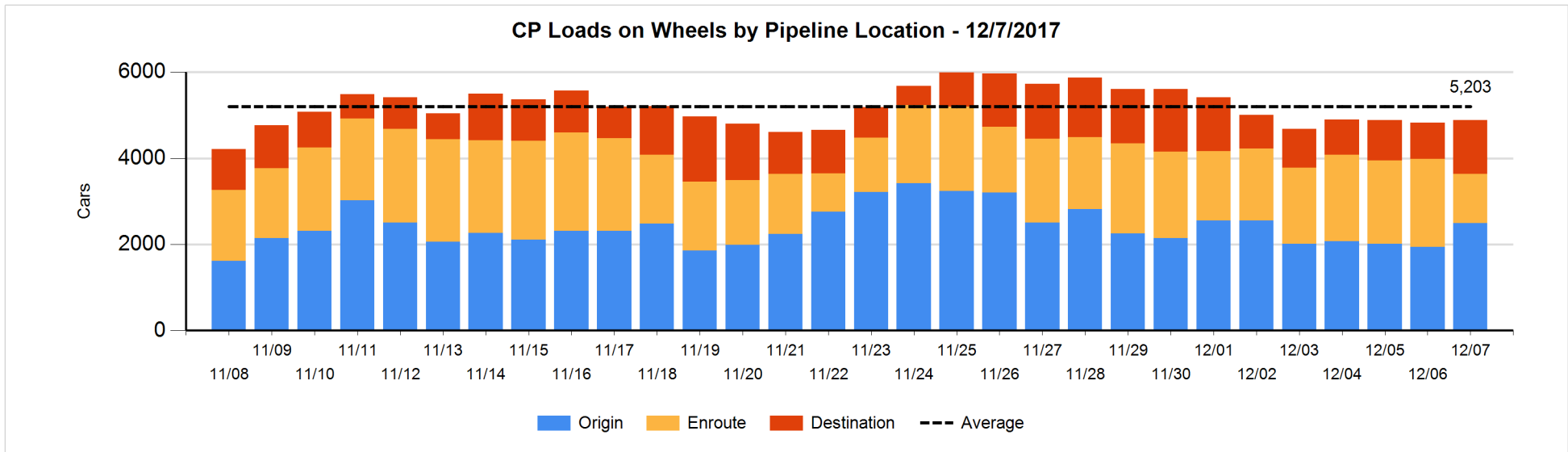
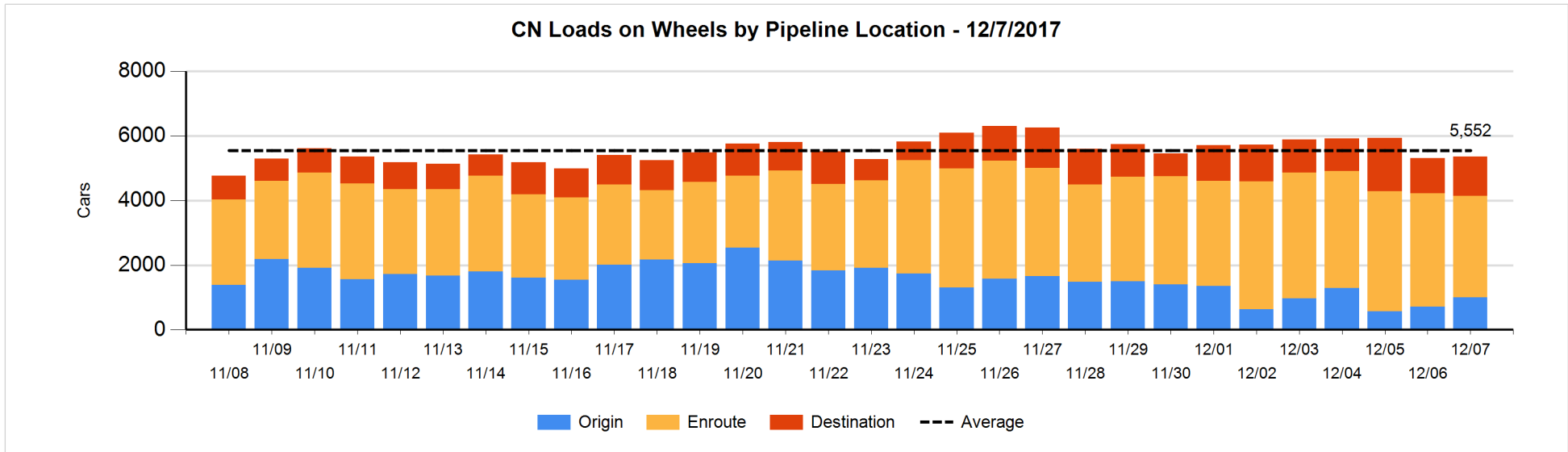


Daily Loads on Wheels By Pipeline Location - 12/7/2017

| | E Canada | Prince Rupert | Thunder Bay | USA/MEX | Vancouver | Total |
|----------------------|----------|---------------|-------------|---------|-----------|-------|
| CN | | | | | | |
| Origin | 135 | 296 | 162 | 21 | 383 | 997 |
| Enroute | 97 | 692 | 169 | 326 | 1,860 | 3,144 |
| Destination | 141 | 42 | 358 | 10 | 661 | 1,212 |
| | 373 | 1,030 | 689 | 357 | 2,904 | 5,353 |
| CP | | | | | | |
| Origin | 11 | | 664 | 107 | 1,710 | 2,492 |
| Enroute | 68 | | 256 | 206 | 609 | 1,139 |
| Destination | | | 834 | 22 | 398 | 1,254 |
| | 79 | | 1,754 | 335 | 2,717 | 4,885 |
| US Rail / Short Line | | | | | | |
| Origin | | | | | | |
| Enroute | 1 | | | 194 | | 195 |
| Destination | | | | 61 | 41 | 102 |
| | 1 | | | 255 | 41 | 297 |

Change in Daily Loads on Wheels By Pipeline Location - Prior 24 Hours

| | E Canada | Prince Rupert | Thunder Bay | USA/MEX | Vancouver | Total |
|----------------------|----------|---------------|-------------|---------|-----------|-------|
| CN | | | | | | |
| Origin | 128 | 156 | 73 | -51 | -25 | 281 |
| Enroute | -120 | -25 | 95 | -2 | -316 | -368 |
| Destination | 52 | -5 | -62 | -3 | 140 | 122 |
| | 60 | 126 | 106 | -56 | -201 | 35 |
| CP | | | | | | |
| Origin | 2 | | 121 | 105 | 325 | 553 |
| Enroute | -1 | | -641 | -72 | -188 | -902 |
| Destination | -2 | | 337 | 20 | 51 | 406 |
| | -1 | | -183 | 53 | 188 | 57 |
| US Rail / Short Line | | | | | | |
| Origin | | | | | | |
| Enroute | 0 | | | -65 | | -65 |
| Destination | -10 | | | -17 | -2 | -29 |
| | -10 | | | -82 | -2 | -94 |

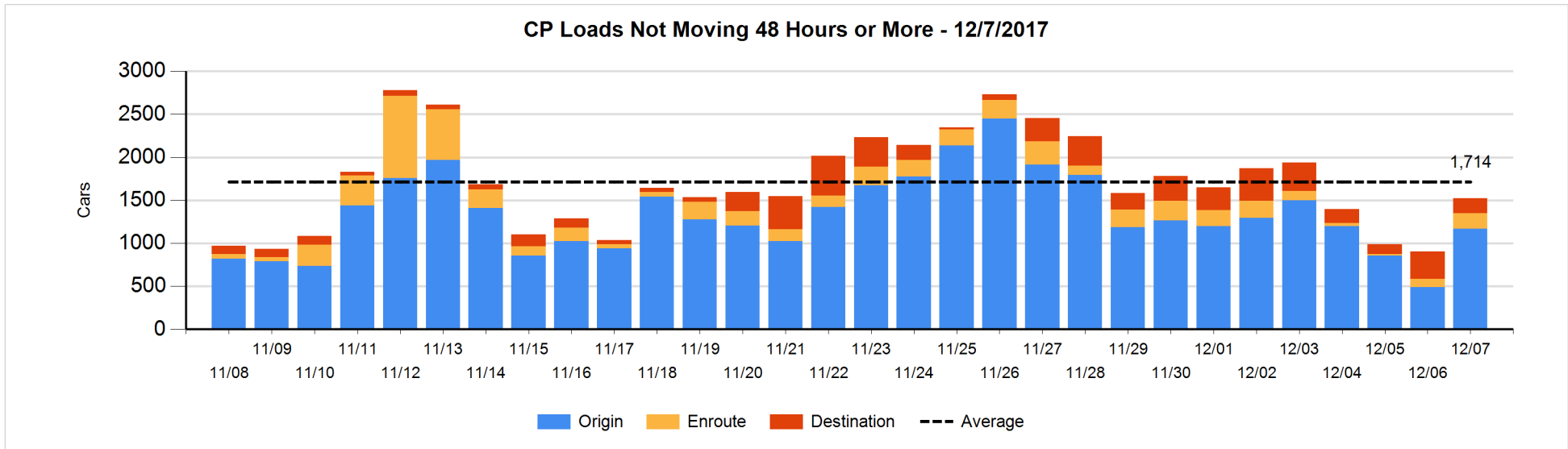
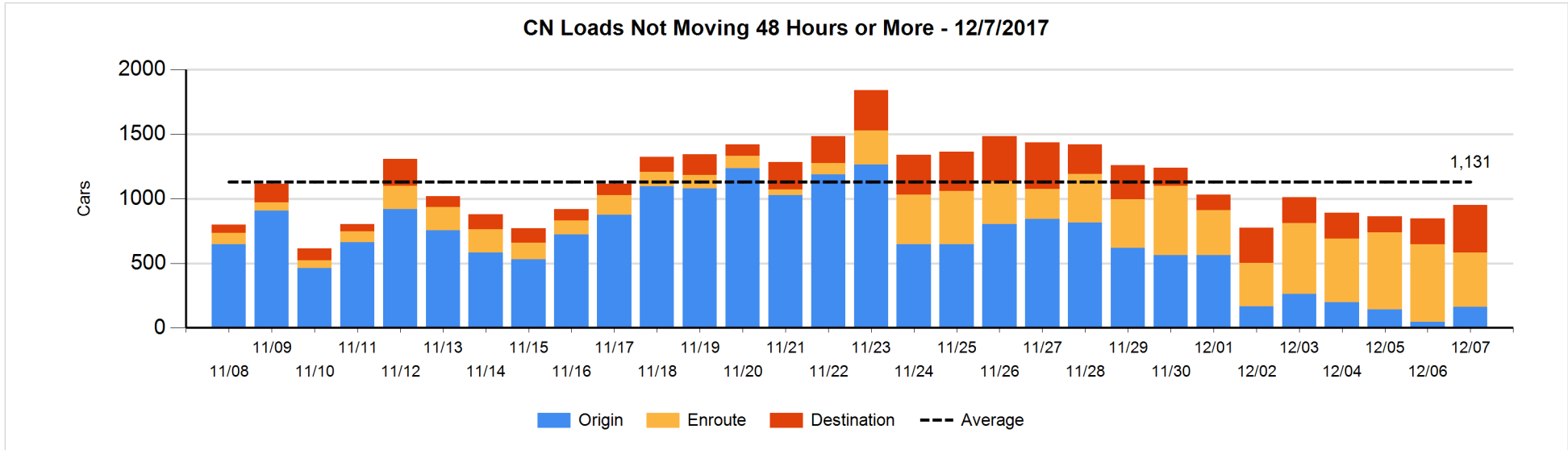


Loads Not Moving 48 Hours or More - 12/7/2017

| | E Canada | Prince Rupert | Thunder Bay | USA/MEX | Vancouver | Total |
|-----------------------------|----------|---------------|-------------|---------|-----------|-------|
| CN | | | | | | |
| Origin | | 4 | 1 | | 158 | 163 |
| Enroute | 17 | 9 | | 48 | 344 | 418 |
| Destination | 15 | 29 | 139 | 3 | 183 | 369 |
| | 32 | 42 | 140 | 51 | 685 | 950 |
| CP | | | | | | |
| Origin | 9 | | 362 | 2 | 794 | 1167 |
| Enroute | 39 | | 11 | 66 | 66 | 182 |
| Destination | | | 167 | | 5 | 172 |
| | 48 | | 540 | 68 | 865 | 1521 |
| US Rail / Short Line | | | | | | |
| Origin | | | | | | |
| Enroute | | | | 22 | | 22 |
| Destination | | | | 33 | 11 | 44 |
| | | | | 55 | 11 | 66 |

Change in Loads Not Moving 48 Hours or More - 12/7/2017

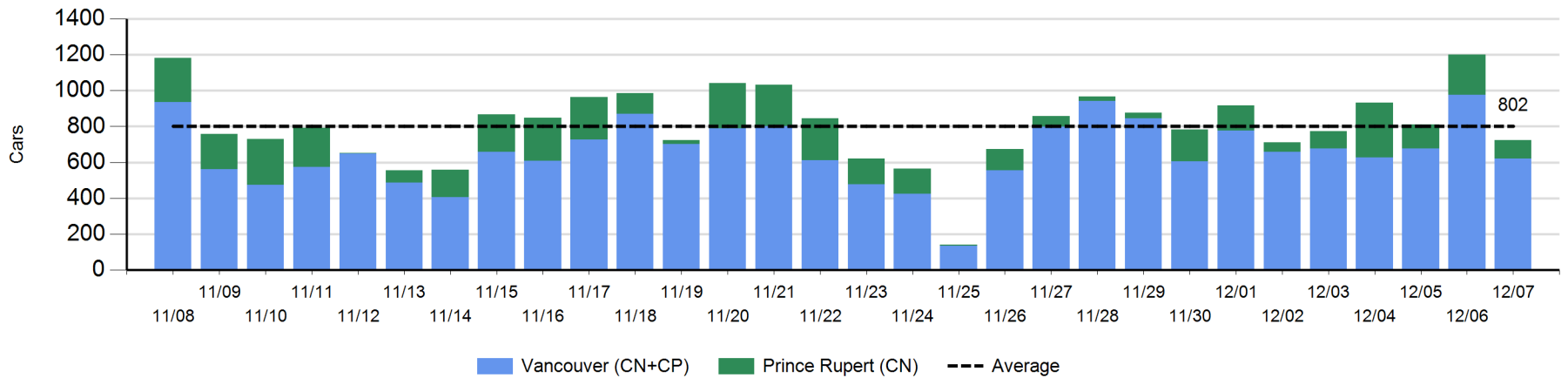
| | E Canada | Prince Rupert | Thunder Bay | USA/MEX | Vancouver | Total |
|-----------------------------|----------|---------------|-------------|---------|-----------|-------|
| CN | | | | | | |
| Origin | | 3 | 1 | | 114 | 118 |
| Enroute | 3 | -3 | | -1 | -182 | -183 |
| Destination | -39 | 14 | 49 | 0 | 143 | 167 |
| | -36 | 14 | 50 | -1 | 75 | 102 |
| CP | | | | | | |
| Origin | 5 | | 271 | 2 | 397 | 675 |
| Enroute | 1 | | 10 | 17 | 60 | 88 |
| Destination | | | -53 | | -92 | -145 |
| | 6 | | 228 | 19 | 365 | 618 |
| US Rail / Short Line | | | | | | |
| Origin | | | | | | |
| Enroute | | | | 2 | | 2 |
| Destination | -1 | | | 6 | 0 | 5 |
| | -1 | | | 8 | 0 | 7 |



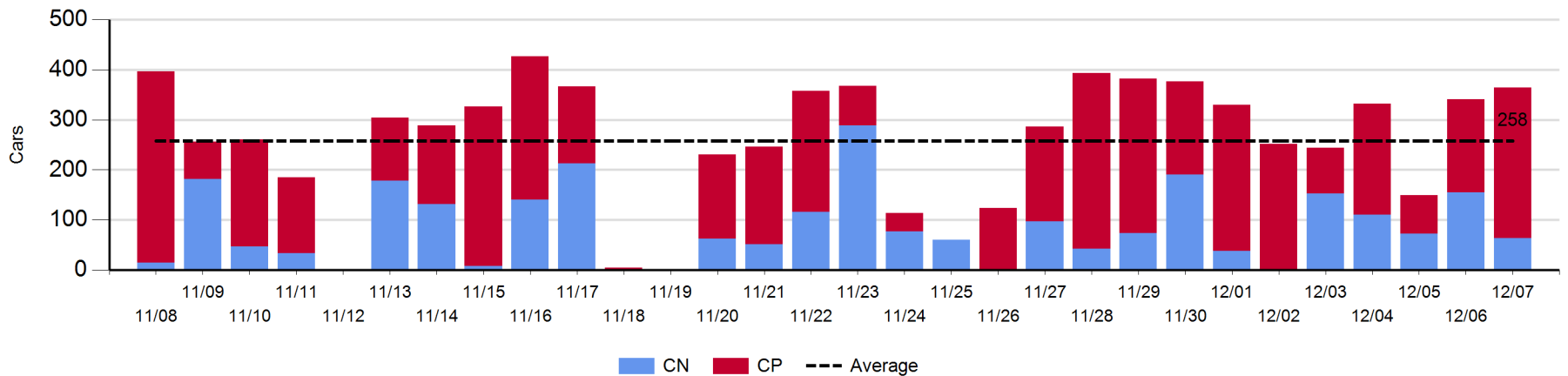
Port Unloads - 12/7/2017

| | Prince Rupert | Vancouver | West Coast Total | Thunder Bay | Total |
|----|---------------|-----------|------------------|-------------|-------|
| CN | 105 | 254 | 359 | 64 | 423 |
| CP | | 366 | 366 | 300 | 666 |
| | 105 | 620 | 725 | 364 | 1,089 |

West Coast Port Unloads - Prior 30 Days



Thunder Bay Port Unloads - Prior 30 Days



Port Terminal Status

Vancouver

Daily Activity for 12/7/2017

| | Cars Arrived | Cars Received in Interchange | Cars Delivered in Interchange | Cars Placed for Unloading | Loads on Wheels at Destination As of 12/7/2017 |
|-----|--------------|------------------------------|-------------------------------|---------------------------|--|
| CN | 524 | | 185 | 358 | 661 |
| CP | 305 | 185 | 9 | 293 | 398 |
| SRY | | 9 | | 11 | 41 |

Port Unloads

| | 12/07 | 12/06 | Week To Date | Last Week |
|-----|-------|-------|--------------|-----------|
| CN | 254 | 487 | 1,406 | 2,719 |
| CP | 366 | 490 | 1,497 | 2,585 |
| SRY | 11 | 12 | 37 | 41 |

Age Profile of Loaded Cars Waiting Placement for Unloading

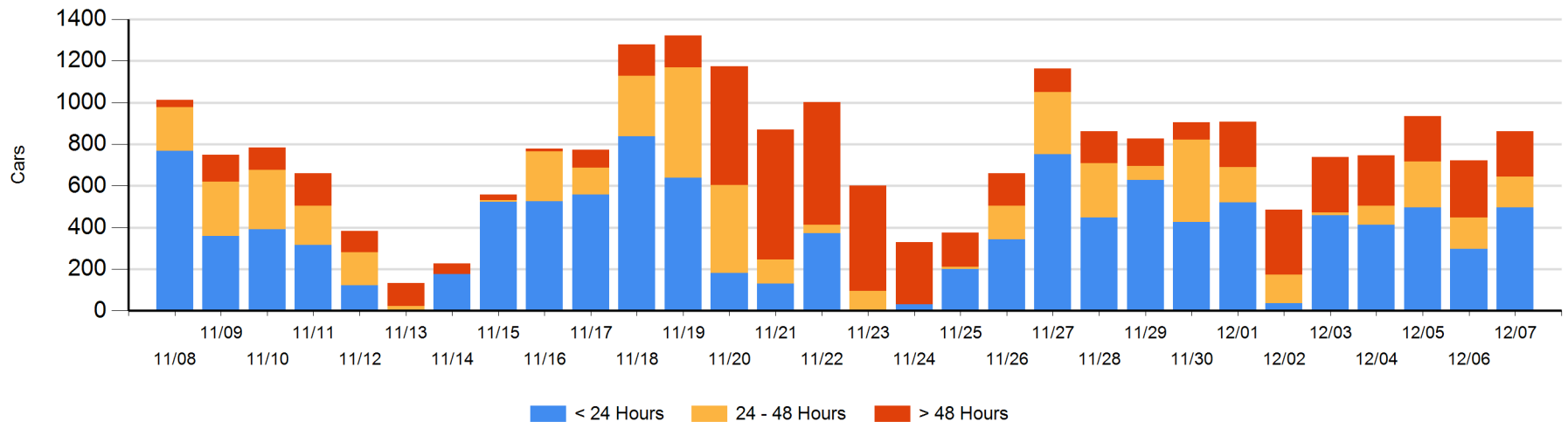
Today

| | < 24 Hrs | 24 - 48 Hrs | > 48-72 Hrs | > 72 Hrs | Total On Hand |
|-----|----------|-------------|-------------|----------|---------------|
| CN | 301 | 73 | 86 | 37 | 497 |
| CP | 194 | 75 | 23 | 73 | 365 |
| SRY | | | | | 0 |

Change in Last 24 Hours

| | < 24 Hrs | 24-48 Hrs | 48 - 72 Hrs | > 72 Hrs |
|-----|----------|-----------|-------------|----------|
| CN | 80 | -33 | -67 | 18 |
| CP | 119 | 30 | 19 | -27 |
| SRY | | | | |

Loaded Cars on Hand Vancouver Waiting for Placement - Last 30 Days All Railways



Port Terminal Status

Prince Rupert

Daily Activity for 12/7/2017

| | Cars Arrived | Cars Received in Interchange | Cars Delivered in Interchange | Cars Placed for Unloading | Loads on Wheels at Destination As of 12/7/2017 |
|----|--------------|------------------------------|-------------------------------|---------------------------|--|
| CN | 100 | | | 99 | 42 |

Port Unloads

| | 12/07 | 12/06 | Week To Date | Last Week |
|----|-------|-------|--------------|-----------|
| CN | 105 | 223 | 765 | 586 |

Age Profile of Loaded Cars Waiting Placement for Unloading

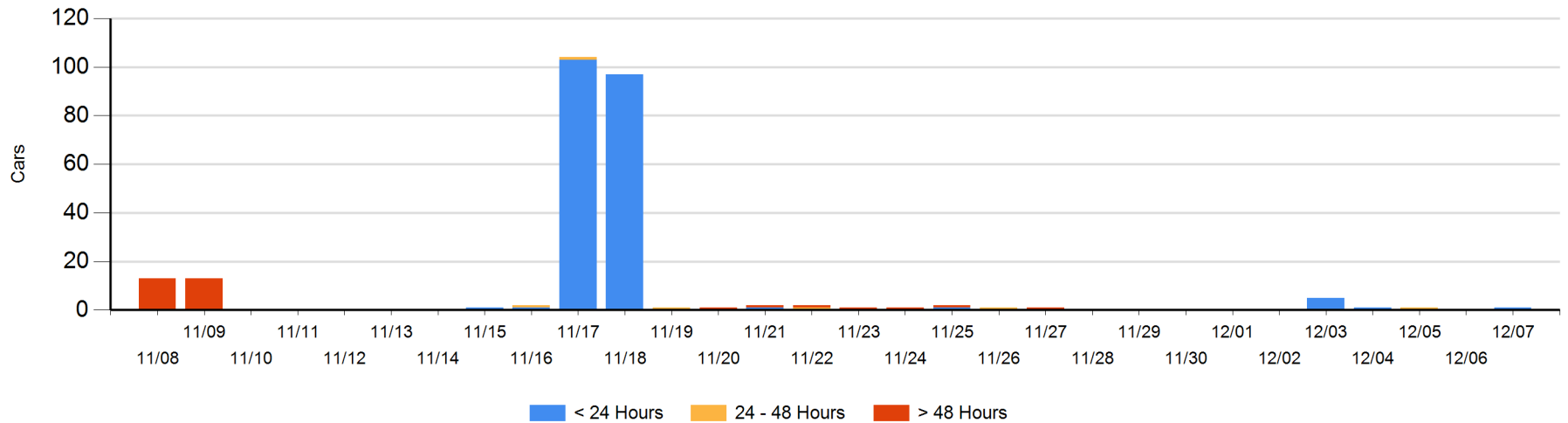
Today

| | < 24 Hrs | 24 - 48 Hrs | > 48-72 Hrs | > 72 Hrs | Total On Hand |
|----|----------|-------------|-------------|----------|---------------|
| CN | 1 | | | | 1 |

Change in Last 24 Hours

| | < 24 Hrs | 24-48 Hrs | 48 - 72 Hrs | > 72 Hrs |
|----|----------|-----------|-------------|----------|
| CN | 1 | | | |

Loaded Cars on Hand Prince Rupert Waiting for Placement - Last 30 Days All Railways



Port Terminal Status

Thunder Bay

Daily Activity for 12/7/2017

| | Cars Arrived | Cars Received in Interchange | Cars Delivered in Interchange | Cars Placed for Unloading | Loads on Wheels at Destination As of 12/7/2017 |
|----|--------------|------------------------------|-------------------------------|---------------------------|--|
| CN | 2 | | | 102 | 358 |
| CP | 92 | | | 248 | 834 |

Port Unloads

| | 12/07 | 12/06 | Week To Date | Last Week |
|----|-------|-------|--------------|-----------|
| CN | 64 | 155 | 402 | 596 |
| CP | 300 | 186 | 784 | 1,667 |

Age Profile of Loaded Cars Waiting Placement for Unloading

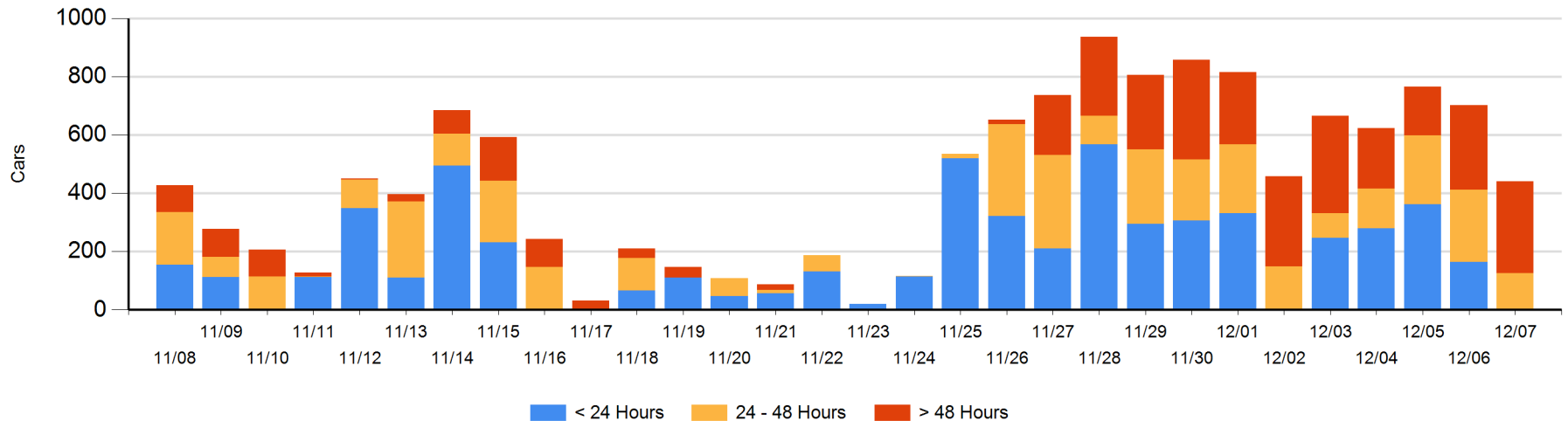
Today

| | < 24 Hrs | 24 - 48 Hrs | > 48-72 Hrs | > 72 Hrs | Total On Hand |
|----|----------|-------------|-------------|----------|---------------|
| CN | 2 | 123 | 104 | 53 | 282 |
| CP | | | 11 | 148 | 159 |

Change in Last 24 Hours

| | < 24 Hrs | 24-48 Hrs | 48 - 72 Hrs | > 72 Hrs |
|----|----------|-----------|-------------|----------|
| CN | -163 | -8 | 54 | 17 |
| CP | | -117 | -116 | 71 |

Loaded Cars on Hand Thunder Bay Waiting for Placement - Last 30 Days All Railways



Measurement Definitions

| | |
|---------------------------------|---|
| Loads on Wheels | <p>Count of loaded rail cars including all rail cars that have been released loaded at origin and have not been reported by the railway as unloaded at destination.</p> <p>Counts include all rail cars (hopper cars and boxcars) moving within a pipeline.</p> |
| Loads Not Moving | <p>Loaded rail cars for which the railways have not reported a movement event for 48 hours or more whether the rail car is at origin, enroute or at destination.</p> |
| Port Unloads | <p>Count of rail cars reported by railways as unloaded at the western port destinations of Vancouver, Prince Rupert and Thunder Bay.</p> <p>Unload counts include all rail cars (hopper cars and boxcars) unloaded by all receivers including major port terminals, transloaders and other receivers.</p> |
| Cars Arrived | <p>Count of rail cars reported as arrived at the destination railway terminal.</p> |
| Cars Received in Interchange | <p>Count of rail cars received in interchange by each railway within a destination railway terminal. Interchange activity is tracked for the Vancouver and Thunder Bay pipelines as applicable.</p> |
| Cars Delivered in Interchange | <p>Count of rail cars delivered in interchange by each railway within a destination railway terminal. Interchange activity is tracked for the Vancouver and Thunder Bay pipelines as applicable.</p> |
| Cars Placed for Unloading | <p>Count of rail cars reported by the railways as placed loaded at the receiver's facility for unloading.</p> |
| Loads on Wheels at Destination | <p>Count of rail cars that remain under load within the destination railway terminal including rail cars that have been reported as placed for unloading but not yet reported as unloaded.</p> |
| Waiting Placement for Unloading | <p>Count of rail cars that have been reported as arrived at the destination railway terminal but not reported as placed for unloading by the railway.</p> <p>For the Ports of Vancouver, Prince Rupert and Thunder Bay the count of rail cars waiting placement for unloading is categorized by age – i.e. the elapsed time from arrival at destination to the current report date.</p> |