

Loads on Wheels

- System wide loads on wheels changed little in the prior 24 hours - loads now at 10,630 - 3% lower than the trailing 30 day average
- In total loads on wheels increased by 65 cars reflecting a slight decrease in CN volumes offset by an increase in CP volumes.
- CN volumes declined marginally across all 5 corridors with little notable change in any one corridor. System wide CN loads on wheels are now at 5,533 - in line with the trailing 30 day average.
- CP volumes increased in the Vancouver corridor (+137) in addition to seeing minor increases in the Thunder Bay and E Canada corridors. System wide loads at 4,953 - 2% below the trailing 30 day average.
- Vancouver now at 5,765, Prince Rupert at 1,538 - the 2nd highest level in the prior 30 days - and Thunder Bay at 1,687. Thunder Bay volumes continue to moderate as the closing of the Seaway shipping season approaches.

Loads Not Moving

- The count of loaded cars not moving on CN and CP for 48 hours or more increased by 644 cars in the prior 24 hours; total cars on CN and CP not moving for 48 hours now at 2,829.
- CN
 - The count of cars not moving increased marginally (+59) on a net basis in the prior 24 hours - loads on wheels now idle for 48 hours or more at 950.
 - Principal changes are in the Vancouver (-57) and Prince Rupert (+86) corridors.
 - Cars are dwelling throughout the various pipelines - Prince Rupert primarily at origin and Vancouver primarily on line.
- CP
 - CP counts increased by 585 cars with increases seen in the Vancouver (+308), USA (+167) and Thunder Bay (+111) corridors - idle cars now at 1,879
 - 85% of cars are dwelling at origin with nearly 700 cars dwelling loaded at origin for 4 days or more.

Port Performance

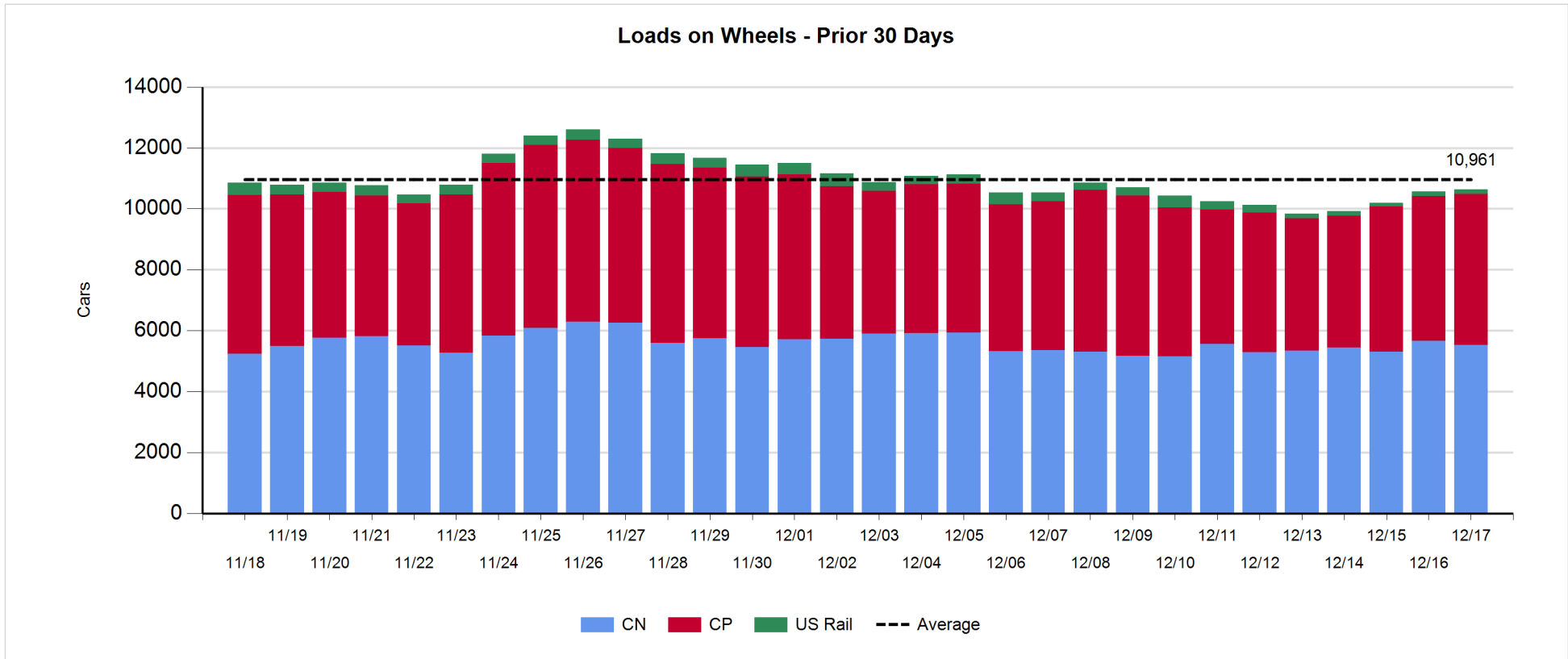
- CN and CP unloaded a total of 1,092 cars at the three western ports. Week 20 unloads totaled 8,620 a 5% increase as compared to the prior week. Prince Rupert (+54%) and Vancouver (+5%) saw increases while Thunder Bay unloads declined 21% week over week.
- Vancouver
 - Total of 649 cars reported unloaded by CN and CP at the Port of Vancouver; CN - 416 and CP - 233.
 - There are currently 1,058 cars on hand at Vancouver waiting placement for unloading - 314 of these cars arrived at Vancouver more than 72 hours ago.
- Thunder Bay
 - Total of 238 cars reported unloaded by CN and CP in the prior 24 hours.
 - Cars at Thunder Bay waiting placement now at 307.

Daily Loads on Wheels - 12/17/2017

	E Canada	Prince Rupert	Thunder Bay	USA/MEX	Vancouver	Total
CN	686	1,538	329	331	2,649	5,533
CP	106		1,358	406	3,083	4,953
Short Line	9				33	42
US Rail				102		102
	801	1,538	1,687	839	5,765	10,630

Change in Loads on Wheels - Prior 24 Hours

	E Canada	Prince Rupert	Thunder Bay	USA/MEX	Vancouver	Total
CN	-3	-8	-30	-6	-76	-123
CP	25		31	0	137	193
Short Line	1				-4	-3
US Rail				-2		-2
	23	-8	1	-8	57	65



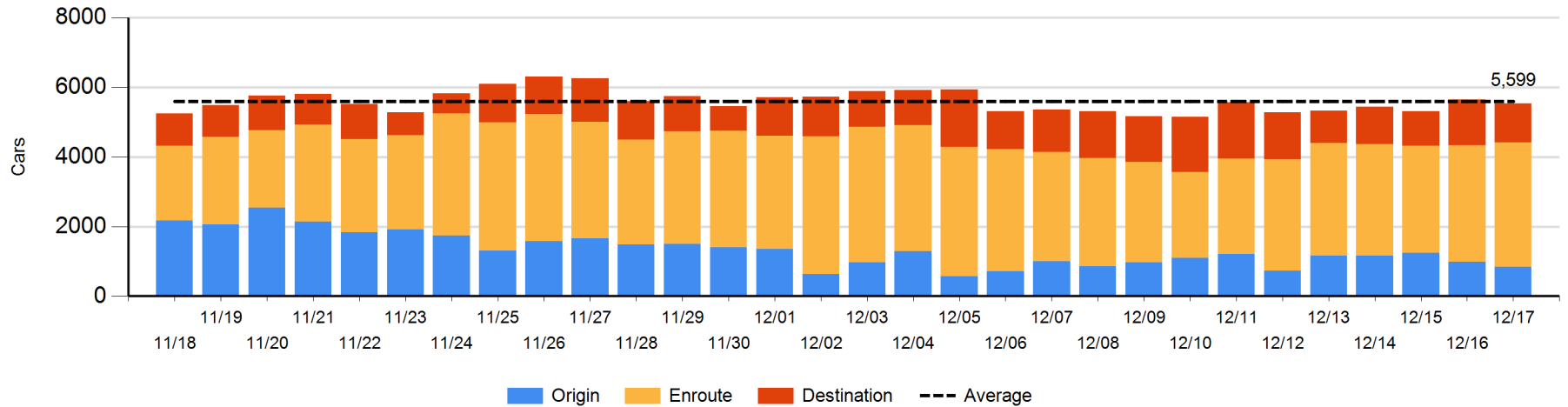
Daily Loads on Wheels By Pipeline Location - 12/17/2017

	E Canada	Prince Rupert	Thunder Bay	USA/MEX	Vancouver	Total
CN						
Origin	59	339	52		388	838
Enroute	545	918	133	216	1,769	3,581
Destination	82	281	144	115	492	1,114
	686	1,538	329	331	2,649	5,533
CP						
Origin	30		750	192	1,589	2,561
Enroute	60		322	207	690	1,279
Destination	16		286	7	804	1,113
	106		1,358	406	3,083	4,953
US Rail / Short Line						
Origin						
Enroute	1			73		74
Destination	8			29	33	70
	9			102	33	144

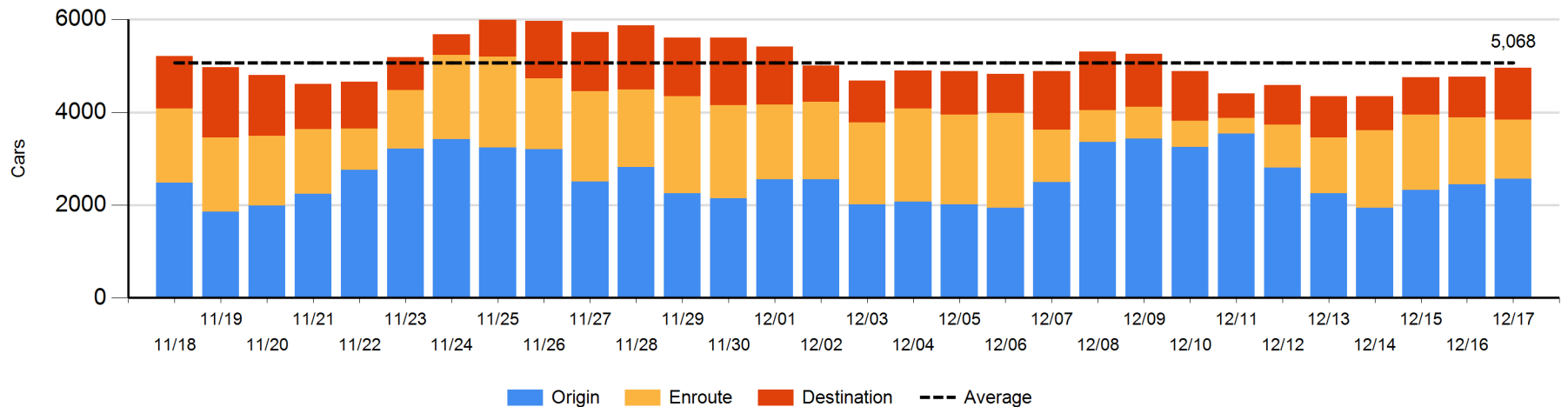
Change in Daily Loads on Wheels By Pipeline Location - Prior 24 Hours

	E Canada	Prince Rupert	Thunder Bay	USA/MEX	Vancouver	Total
CN						
Origin	-20	-17	-15	-8	-81	-141
Enroute	16	-45	-7	7	256	227
Destination	1	54	-8	-5	-251	-209
	-3	-8	-30	-6	-76	-123
CP						
Origin	25		137	-2	-44	116
Enroute	-11		29	2	-189	-169
Destination	11		-135	0	370	246
	25		31	0	137	193
US Rail / Short Line						
Origin						
Enroute	1			-3		-2
Destination	0			1	-4	-3
	1			-2	-4	-5

CN Loads on Wheels by Pipeline Location - 12/17/2017



CP Loads on Wheels by Pipeline Location - 12/17/2017

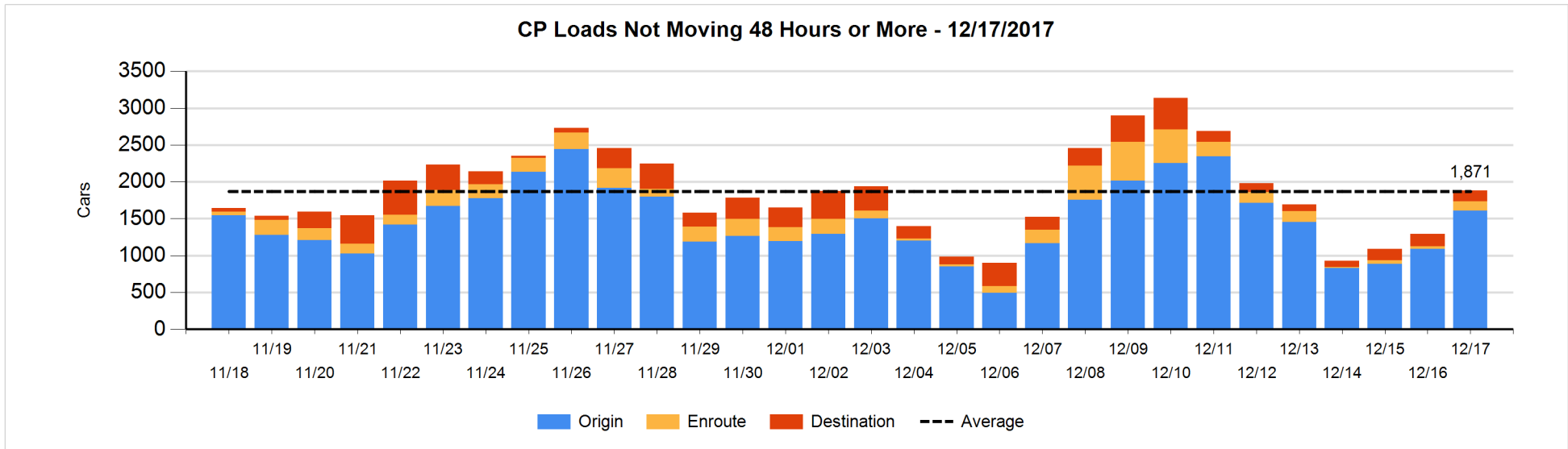
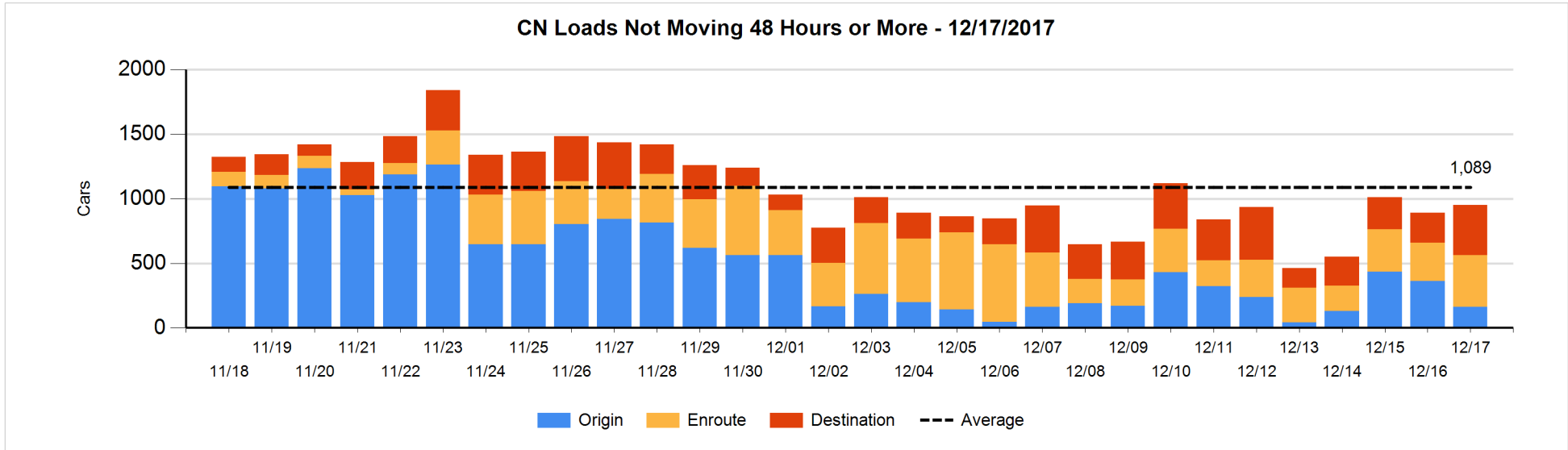


Loads Not Moving 48 Hours or More - 12/17/2017

	E Canada	Prince Rupert	Thunder Bay	USA/MEX	Vancouver	Total
CN						
Origin		143			17	160
Enroute	24	44	9	8	316	401
Destination	81	87	50	9	162	389
	105	274	59	17	495	950
CP						
Origin	5		500	192	911	1608
Enroute	8		52	55	15	130
Destination			22		119	141
	13		574	247	1045	1879
US Rail / Short Line						
Origin						
Enroute				28		28
Destination	2			25	13	40
	2			53	13	68

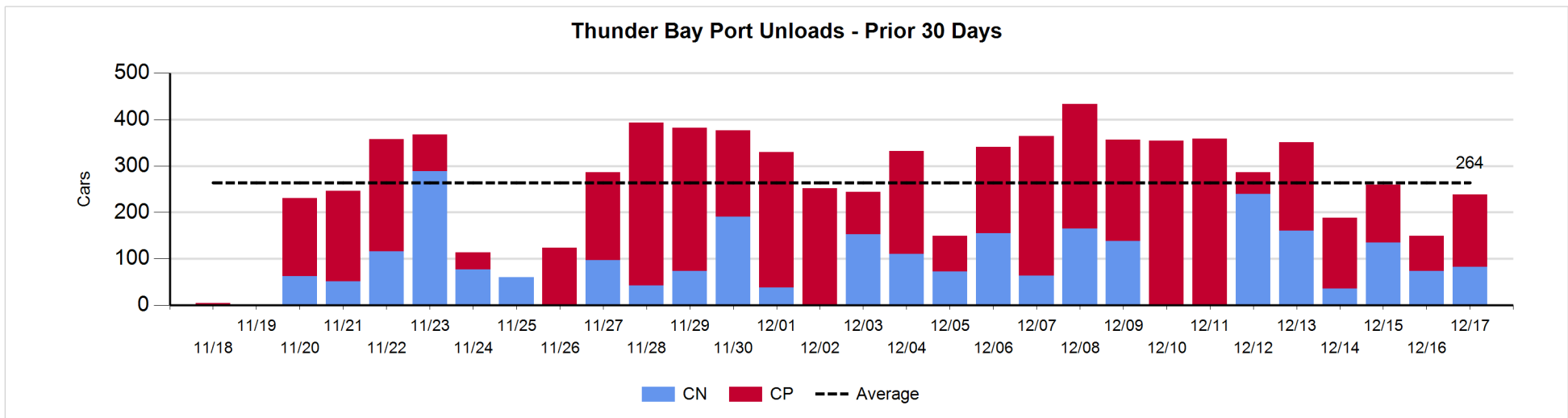
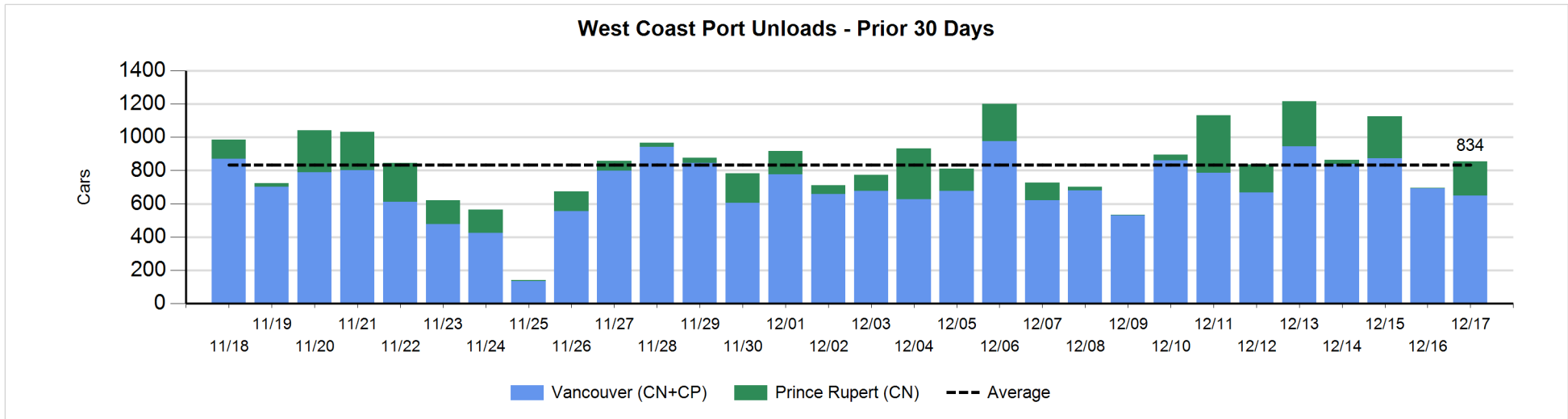
Change in Loads Not Moving 48 Hours or More - 12/17/2017

	E Canada	Prince Rupert	Thunder Bay	USA/MEX	Vancouver	Total
CN						
Origin		-2			-202	-204
Enroute	-14	2	5	1	114	108
Destination	3	86	38	-3	31	155
	-11	86	43	-2	-57	59
CP						
Origin	0		59	122	334	515
Enroute	-1		52	45	0	96
Destination			0		-26	-26
	-1		111	167	308	585
US Rail / Short Line						
Origin						
Enroute				-4		-4
Destination	0			3	-1	2
	0			-1	-1	-2



Port Unloads - 12/17/2017

	Prince Rupert	Vancouver	West Coast Total	Thunder Bay	Total
CN	205	416	621	82	703
CP		233	233	156	389
	205	649	854	238	1,092



Port Terminal Status

Vancouver

Daily Activity for 12/17/2017

	Cars Arrived	Cars Received in Interchange	Cars Delivered in Interchange	Cars Placed for Unloading	Loads on Wheels at Destination As of 12/17/2017
CN	174	3	11	293	492
CP	597	11	3	329	804
SRY				3	33

Port Unloads

	12/17	12/16	Week To Date	Last Week
CN	416	350	2,995	2,253
CP	233	341	2,452	2,721
SRY	5	1	66	52

Age Profile of Loaded Cars Waiting Placement for Unloading

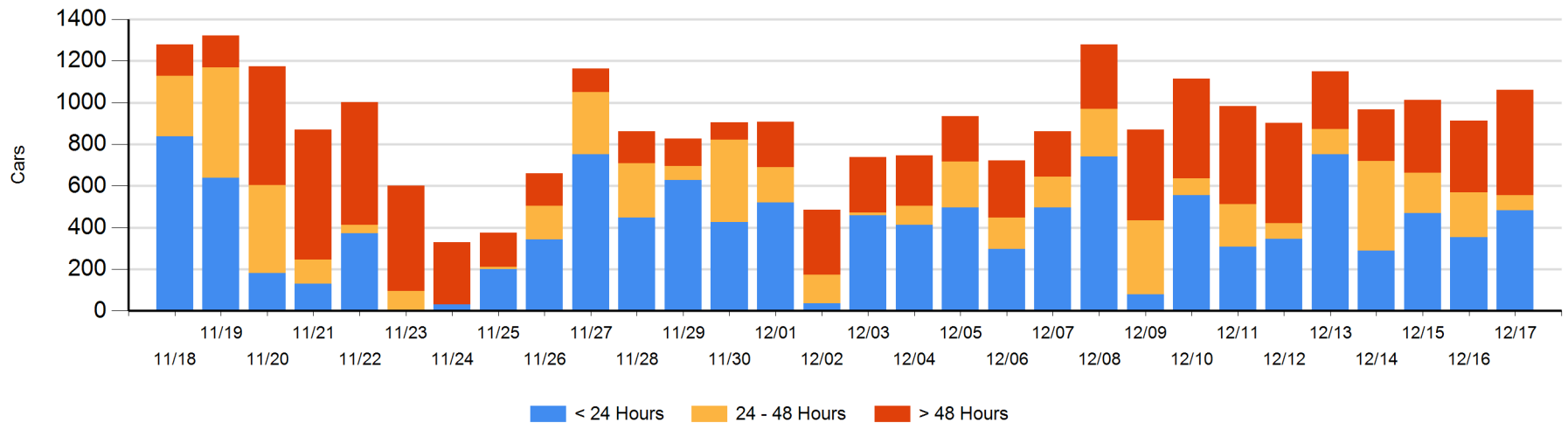
Today

	< 24 Hrs	24 - 48 Hrs	> 48-72 Hrs	> 72 Hrs	Total On Hand
CN	98	24	124	118	364
CP	386	47	65	196	694
SRY				2	2

Change in Last 24 Hours

	< 24 Hrs	24-48 Hrs	48 - 72 Hrs	> 72 Hrs
CN	-26	-113	123	-22
CP	156	-31	24	35
SRY				0

Loaded Cars on Hand Vancouver Waiting for Placement - Last 30 Days All Railways



Port Terminal Status

Prince Rupert

Daily Activity for 12/17/2017

	Cars Arrived	Cars Received in Interchange	Cars Delivered in Interchange	Cars Placed for Unloading	Loads on Wheels at Destination As of 12/17/2017
CN	259			197	281

Port Unloads

	12/17	12/16	Week To Date	Last Week
CN	205	4	1,277	827

Age Profile of Loaded Cars Waiting Placement for Unloading

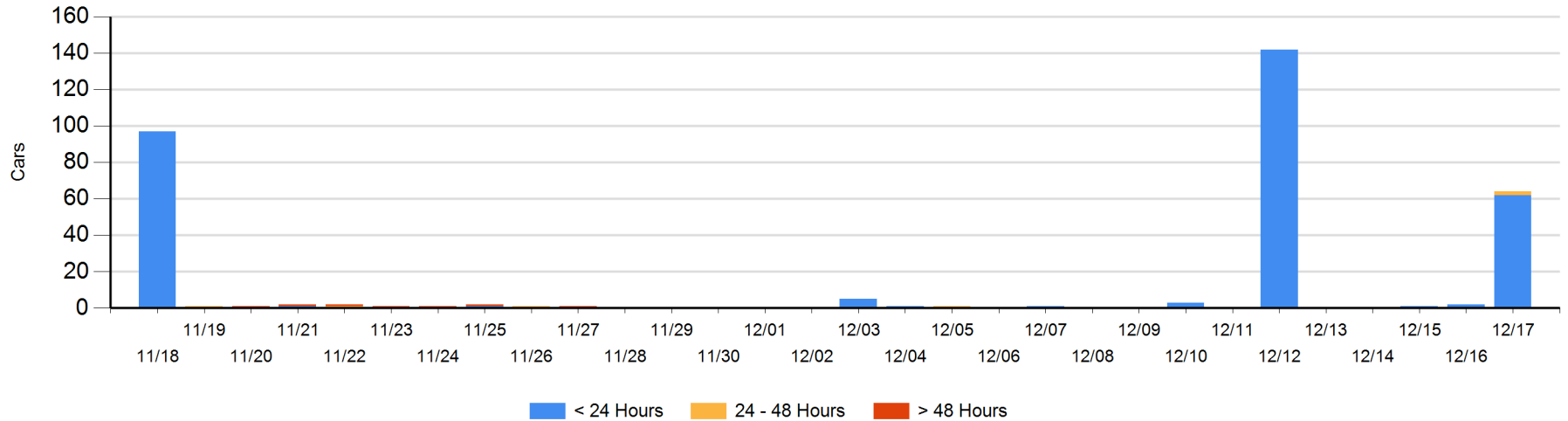
Today

	< 24 Hrs	24 - 48 Hrs	> 48-72 Hrs	> 72 Hrs	Total On Hand
CN	62	2			64

Change in Last 24 Hours

	< 24 Hrs	24-48 Hrs	48 - 72 Hrs	> 72 Hrs
CN	60	2		

Loaded Cars on Hand Prince Rupert Waiting for Placement - Last 30 Days All Railways



Port Terminal Status

Thunder Bay

Daily Activity for 12/17/2017

	Cars Arrived	Cars Received in Interchange	Cars Delivered in Interchange	Cars Placed for Unloading	Loads on Wheels at Destination As of 12/17/2017
CN	74				144
CP	23			189	286

Port Unloads

	12/17	12/16	Week To Date	Last Week
CN	82	74	728	706
CP	156	75	1,102	1,623

Age Profile of Loaded Cars Waiting Placement for Unloading

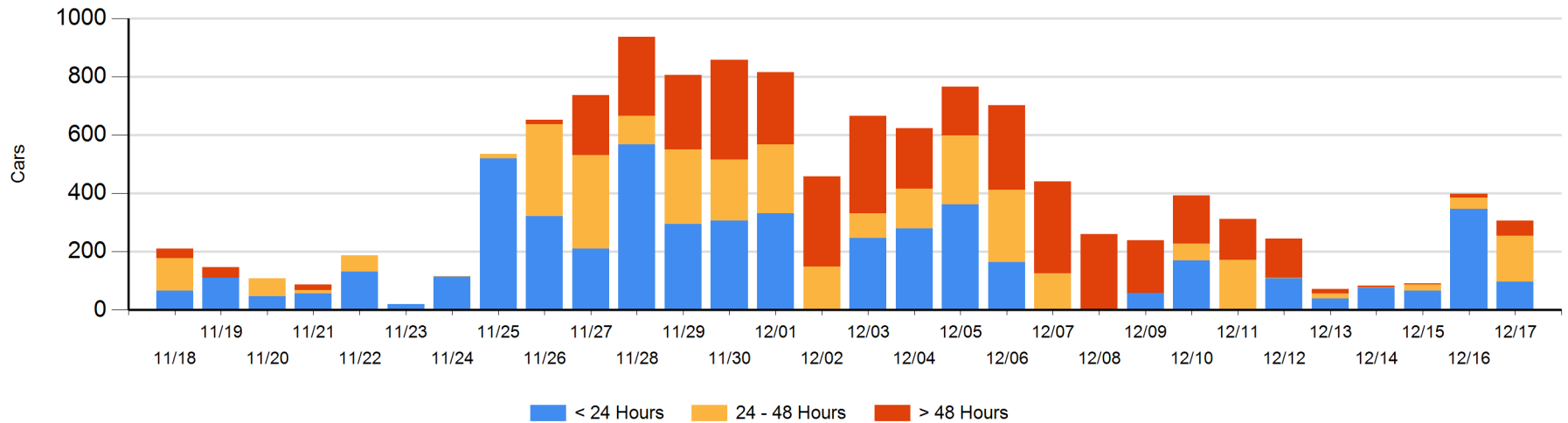
Today

	< 24 Hrs	24 - 48 Hrs	> 48-72 Hrs	> 72 Hrs	Total On Hand
CN	74	11	40		125
CP	23	146		13	182

Change in Last 24 Hours

	< 24 Hrs	24-48 Hrs	48 - 72 Hrs	> 72 Hrs
CN	63	-29	40	
CP	-312	146	-11	11

Loaded Cars on Hand Thunder Bay Waiting for Placement - Last 30 Days All Railways



Measurement Definitions

Loads on Wheels	<p>Count of loaded rail cars including all rail cars that have been released loaded at origin and have not been reported by the railway as unloaded at destination.</p> <p>Counts include all rail cars (hopper cars and boxcars) moving within a pipeline.</p>
Loads Not Moving	<p>Loaded rail cars for which the railways have not reported a movement event for 48 hours or more whether the rail car is at origin, enroute or at destination.</p>
Port Unloads	<p>Count of rail cars reported by railways as unloaded at the western port destinations of Vancouver, Prince Rupert and Thunder Bay.</p> <p>Unload counts include all rail cars (hopper cars and boxcars) unloaded by all receivers including major port terminals, transloaders and other receivers.</p>
Cars Arrived	<p>Count of rail cars reported as arrived at the destination railway terminal.</p>
Cars Received in Interchange	<p>Count of rail cars received in interchange by each railway within a destination railway terminal. Interchange activity is tracked for the Vancouver and Thunder Bay pipelines as applicable.</p>
Cars Delivered in Interchange	<p>Count of rail cars delivered in interchange by each railway within a destination railway terminal. Interchange activity is tracked for the Vancouver and Thunder Bay pipelines as applicable.</p>
Cars Placed for Unloading	<p>Count of rail cars reported by the railways as placed loaded at the receiver's facility for unloading.</p>
Loads on Wheels at Destination	<p>Count of rail cars that remain under load within the destination railway terminal including rail cars that have been reported as placed for unloading but not yet reported as unloaded.</p>
Waiting Placement for Unloading	<p>Count of rail cars that have been reported as arrived at the destination railway terminal but not reported as placed for unloading by the railway.</p> <p>For the Ports of Vancouver, Prince Rupert and Thunder Bay the count of rail cars waiting placement for unloading is categorized by age – i.e. the elapsed time from arrival at destination to the current report date.</p>