

### Loads on Wheels

- System wide loads on wheels increased in the prior 24 hours - loads now at 11,006 - in line with the trailing 30 day average
- In total loads on wheels increased by 371 cars reflecting an increase in CN volumes offset by a nominal decrease in CP volumes.
- CN volumes increased principally in the Vancouver corridor (+440) along with a nominal increase in the Thunder Bay corridor (+47) offset by declines in other corridors. System wide CN loads on wheels are now at 5,963 - 6% above the trailing 30 day average.
- CP volumes declined slightly in total lead by Vancouver (-105) offset by an increase in traffic destined to the US (+77). System wide loads at 4,905 - 3% below the trailing 30 day average.
- Vancouver now at 6,087, Prince Rupert at 1,507 and Thunder Bay at 1,713.

### Loads Not Moving

- The count of loaded cars not moving on CN and CP for 48 hours or more declined significantly (-905) in the prior 24 hours; total cars on CN and CP not moving for 48 hours now at 1,925.
- CN
  - The count of cars not moving declined by 264 cars on a net basis in the prior 24 hours - loads on wheels now idle for 48 hours or more at 687.
  - Principal changes are in the Vancouver (-124) and Prince Rupert (-198) corridors offset by an increase in cars destined to the US (+102).
  - 54% of idle cars (372) are destined to Vancouver with half of these dwelling on line - nearly all west of Jasper, AB.
- CP
  - CP counts declined by 641 cars led by Vancouver (-241), Thunder Bay (-269) and US (-135) - idle cars now at 1,238
  - 83% of cars are dwelling at origin with more than 400 cars dwelling loaded at origin for 4 days or more - an improvement over the prior 24 hours.

### Port Performance

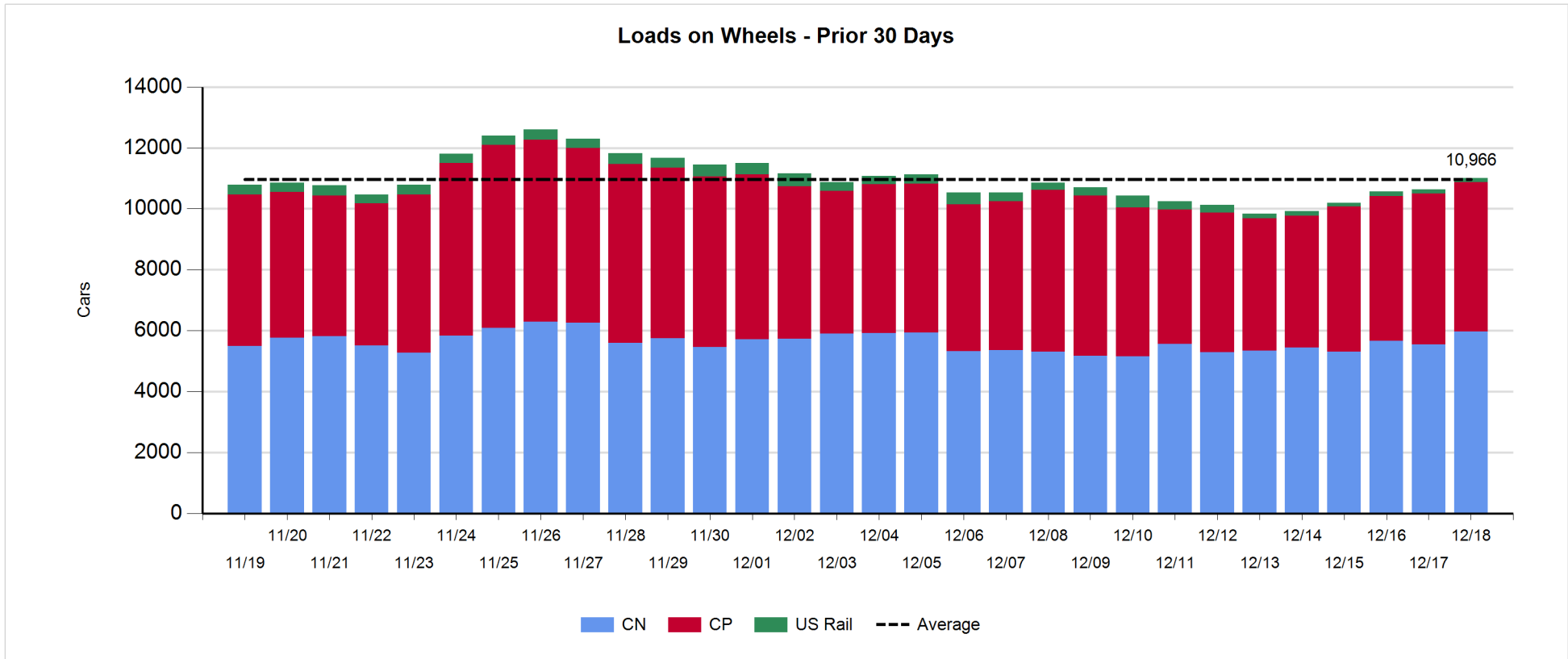
- CN and CP unloaded a total of 1,301 cars at the three western ports - 13% lower than unloads the same day last week.
- Vancouver
  - Total of 855 cars reported unloaded by CN and CP at the Port of Vancouver; CN - 345 and CP - 510.
  - There are currently 698 cars on hand at Vancouver waiting placement for unloading - 244 of these cars arrived at Vancouver more than 72 hours ago.
- Thunder Bay
  - Total of 163 cars reported unloaded by CN and CP in the prior 24 hours.
  - Cars at Thunder Bay waiting placement now at 231 - all CP.

**Daily Loads on Wheels - 12/18/2017**

	E Canada	Prince Rupert	Thunder Bay	USA/MEX	Vancouver	Total
CN	712	1,507	376	278	3,090	5,963
CP	107		1,337	483	2,978	4,905
Short Line	4				19	23
US Rail				115		115
	823	1,507	1,713	876	6,087	11,006

**Change in Loads on Wheels - Prior 24 Hours**

	E Canada	Prince Rupert	Thunder Bay	USA/MEX	Vancouver	Total
CN	26	-35	47	-53	440	425
CP	1		-21	77	-105	-48
Short Line	-5				-14	-19
US Rail				13		13
	22	-35	26	37	321	371

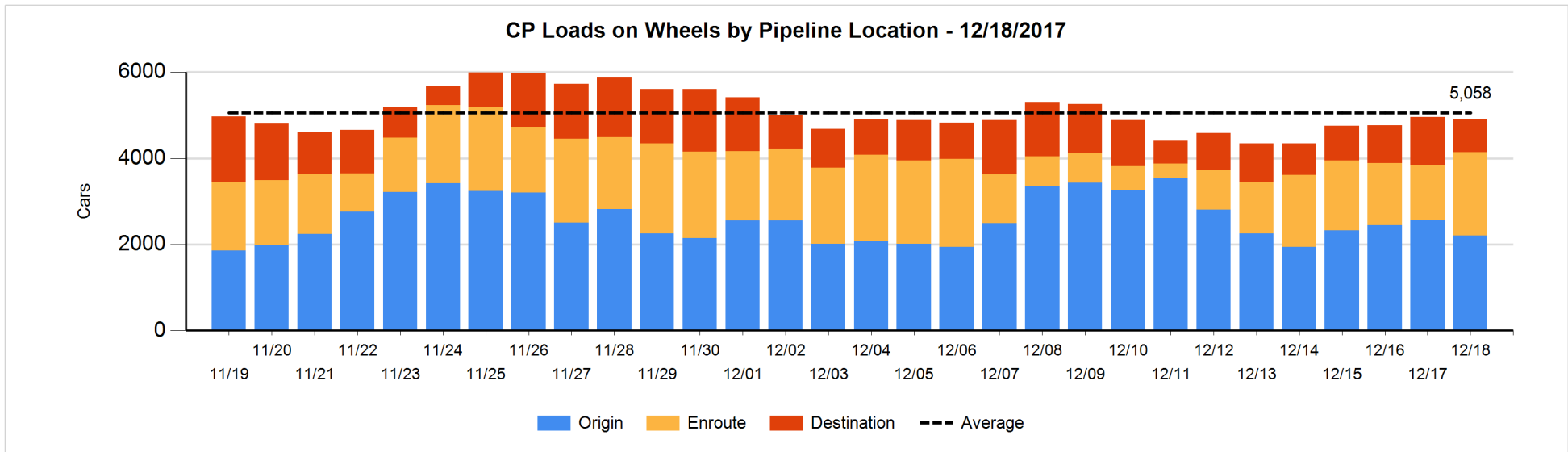
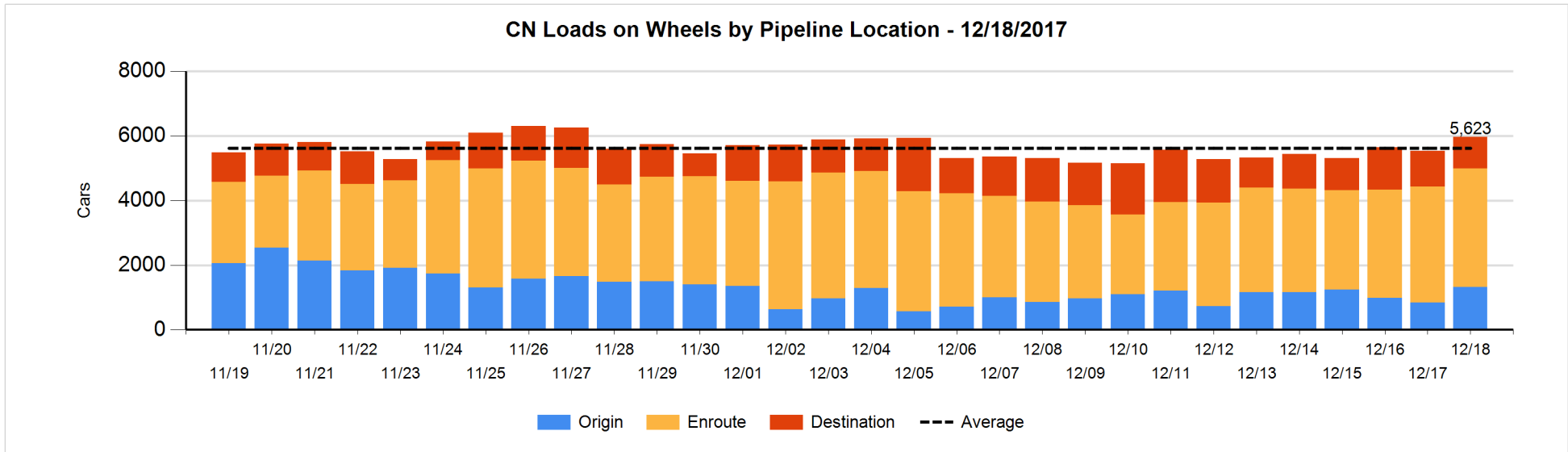


**Daily Loads on Wheels By Pipeline Location - 12/18/2017**

	E Canada	Prince Rupert	Thunder Bay	USA/MEX	Vancouver	Total
CN						
Origin	60	462	156	6	636	1,320
Enroute	575	957	133	154	1,855	3,674
Destination	77	88	87	118	611	981
	712	1,507	376	278	3,102	5,975
CP						
Origin	32		443	192	1,532	2,199
Enroute	22		496	284	1,139	1,941
Destination	53		398	7	307	765
	107		1,337	483	2,978	4,905
US Rail / Short Line						
Origin						
Enroute	1			65		66
Destination	3			50	19	72
	4			115	19	138

**Change in Daily Loads on Wheels By Pipeline Location - Prior 24 Hours**

	E Canada	Prince Rupert	Thunder Bay	USA/MEX	Vancouver	Total
CN						
Origin	1	119	104	6	248	478
Enroute	30	39	0	-62	85	92
Destination	-5	-193	-57	3	119	-133
	26	-35	47	-53	452	437
CP						
Origin	2		-307	0	-57	-362
Enroute	-38		174	77	449	662
Destination	37		112	0	-497	-348
	1		-21	77	-105	-48
US Rail / Short Line						
Origin						
Enroute	0			-8		-8
Destination	-5			21	-14	2
	-5			13	-14	-6

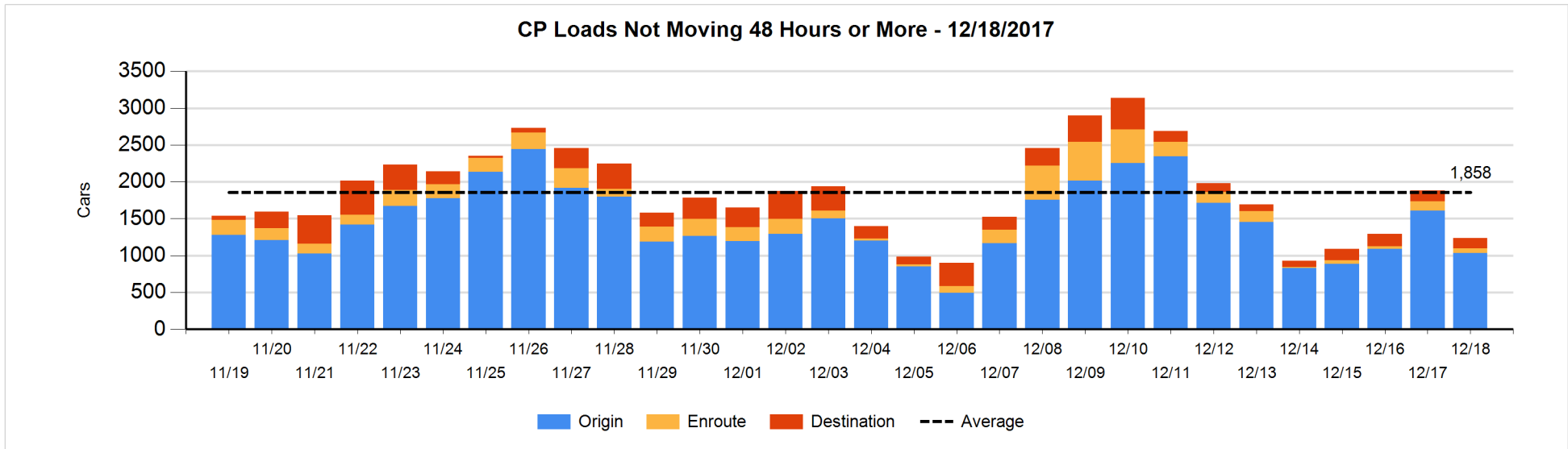
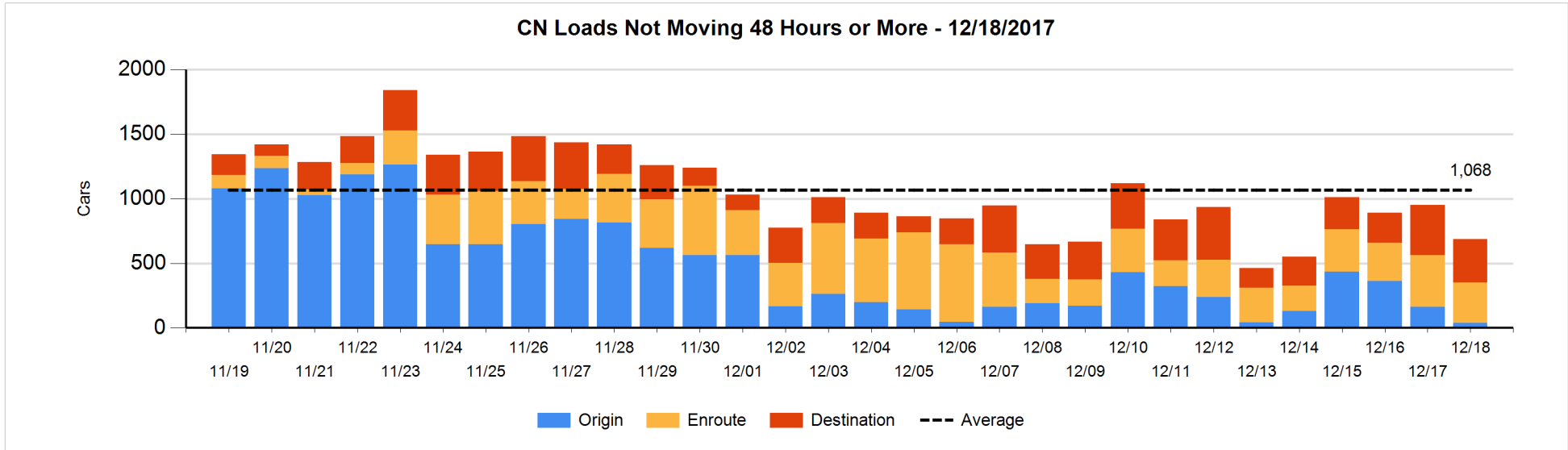


**Loads Not Moving 48 Hours or More - 12/18/2017**

	E Canada	Prince Rupert	Thunder Bay	USA/MEX	Vancouver	Total
<b>CN</b>						
Origin		13			26	39
Enroute	30	61	9	9	204	313
Destination	71	2	10	110	142	335
	101	76	19	119	372	687
<b>CP</b>						
Origin	5		169	92	766	1032
Enroute	7			20	35	62
Destination	5		136		3	144
	17		305	112	804	1238
<b>US Rail / Short Line</b>						
Origin						
Enroute				22		22
Destination				6	9	15
				28	9	37

**Change in Loads Not Moving 48 Hours or More - 12/18/2017**

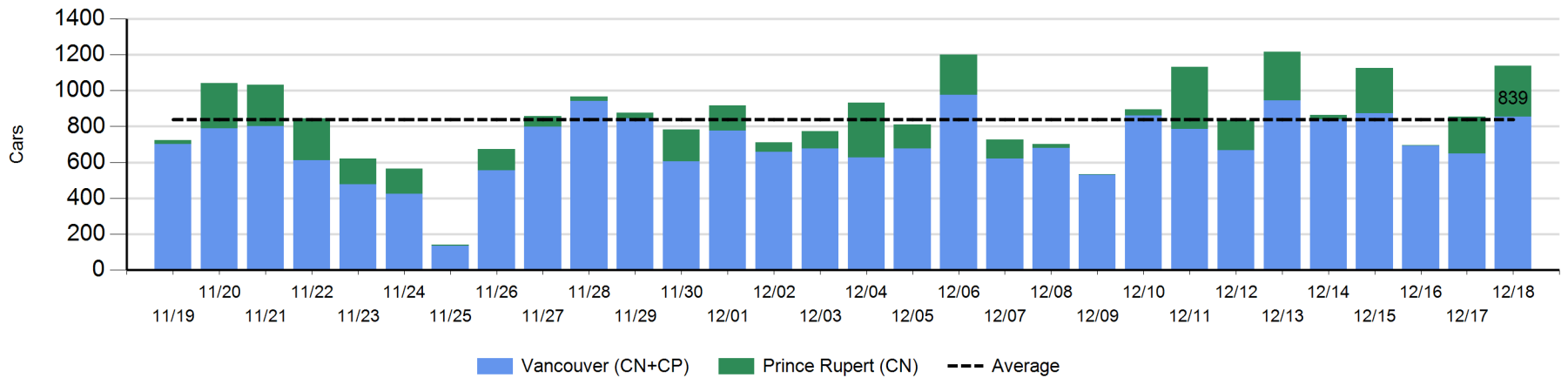
	E Canada	Prince Rupert	Thunder Bay	USA/MEX	Vancouver	Total
<b>CN</b>						
Origin		-130			9	-121
Enroute	6	17	0	1	-113	-89
Destination	-10	-85	-40	101	-20	-54
	-4	-198	-40	102	-124	-264
<b>CP</b>						
Origin	0		-331	-100	-145	-576
Enroute	-1		-52	-35	20	-68
Destination	5		114		-116	3
	4		-269	-135	-241	-641
<b>US Rail / Short Line</b>						
Origin						
Enroute				-6		-6
Destination	-2			-19	-4	-25
	-2			-25	-4	-31



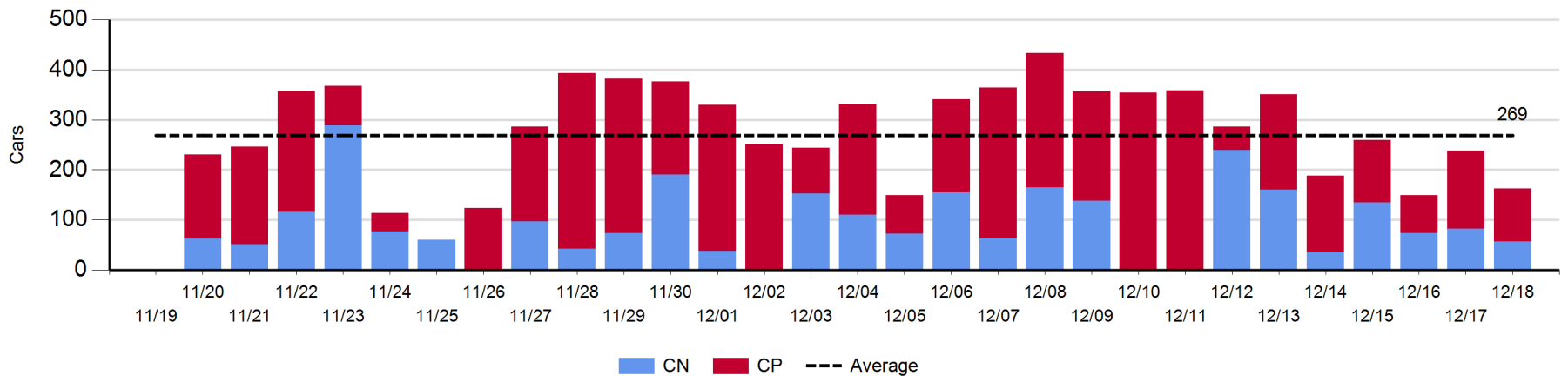
**Port Unloads - 12/18/2017**

	Prince Rupert	Vancouver	West Coast Total	Thunder Bay	Total
CN	283	345	628	57	685
CP		510	510	106	616
	283	855	1,138	163	1,301

**West Coast Port Unloads - Prior 30 Days**



**Thunder Bay Port Unloads - Prior 30 Days**



**Port Terminal Status**

**Vancouver**

Daily Activity for 12/18/2017

	Cars Arrived	Cars Received in Interchange	Cars Delivered in Interchange	Cars Placed for Unloading	Loads on Wheels at Destination As of 12/18/2017
CN	348	221	136	382	611
CP	118	136	222	423	307
SRY		1		12	19

**Port Unloads**

	12/18	12/17	Week To Date	Last Week
CN	345	416	345	2,995
CP	510	233	510	2,452
SRY	14	5	14	66

**Age Profile of Loaded Cars Waiting Placement for Unloading**

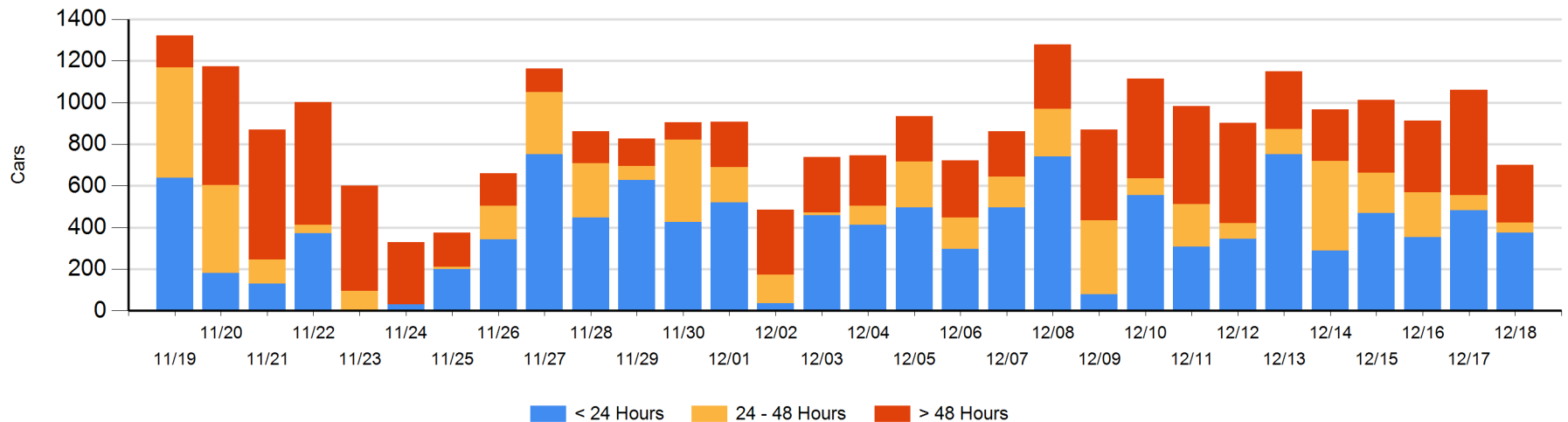
**Today**

	< 24 Hrs	24 - 48 Hrs	> 48-72 Hrs	> 72 Hrs	Total On Hand
CN	258	42	24	109	433
CP	118	6	6	135	265
SRY				2	2

**Change in Last 24 Hours**

	< 24 Hrs	24-48 Hrs	48 - 72 Hrs	> 72 Hrs
CN	160	18	-100	-9
CP	-268	-41	-59	-61
SRY				0

**Loaded Cars on Hand Vancouver Waiting for Placement - Last 30 Days All Railways**





**Port Terminal Status**

**Prince Rupert**

Daily Activity for 12/18/2017

	Cars Arrived	Cars Received in Interchange	Cars Delivered in Interchange	Cars Placed for Unloading	Loads on Wheels at Destination As of 12/18/2017
CN	55			117	88

**Port Unloads**

	12/18	12/17	Week To Date	Last Week
CN	283	205	283	1,277

**Age Profile of Loaded Cars Waiting Placement for Unloading**

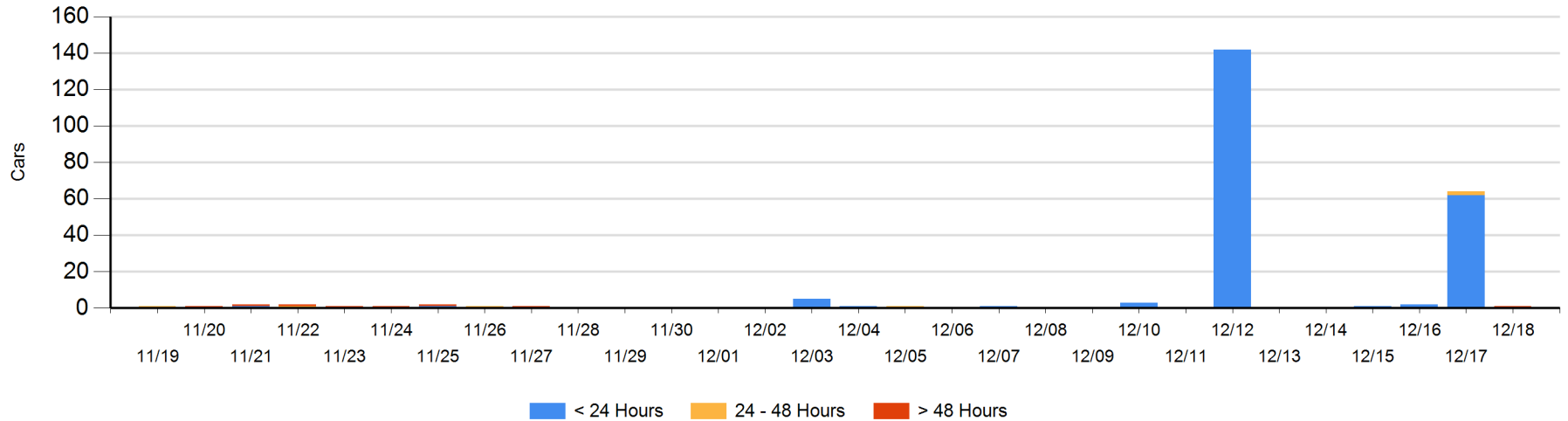
**Today**

	< 24 Hrs	24 - 48 Hrs	> 48-72 Hrs	> 72 Hrs	Total On Hand
CN			1		1

**Change in Last 24 Hours**

	< 24 Hrs	24-48 Hrs	48 - 72 Hrs	> 72 Hrs
CN	-62	-2	1	

Loaded Cars on Hand Prince Rupert Waiting for Placement - Last 30 Days All Railways



**Port Terminal Status**

**Thunder Bay**

Daily Activity for 12/18/2017

	Cars Arrived	Cars Received in Interchange	Cars Delivered in Interchange	Cars Placed for Unloading	Loads on Wheels at Destination As of 12/18/2017
CN				126	87
CP	136			71	398

**Port Unloads**

	12/18	12/17	Week To Date	Last Week
CN	57	82	57	728
CP	106	156	106	1,102

**Age Profile of Loaded Cars Waiting Placement for Unloading**

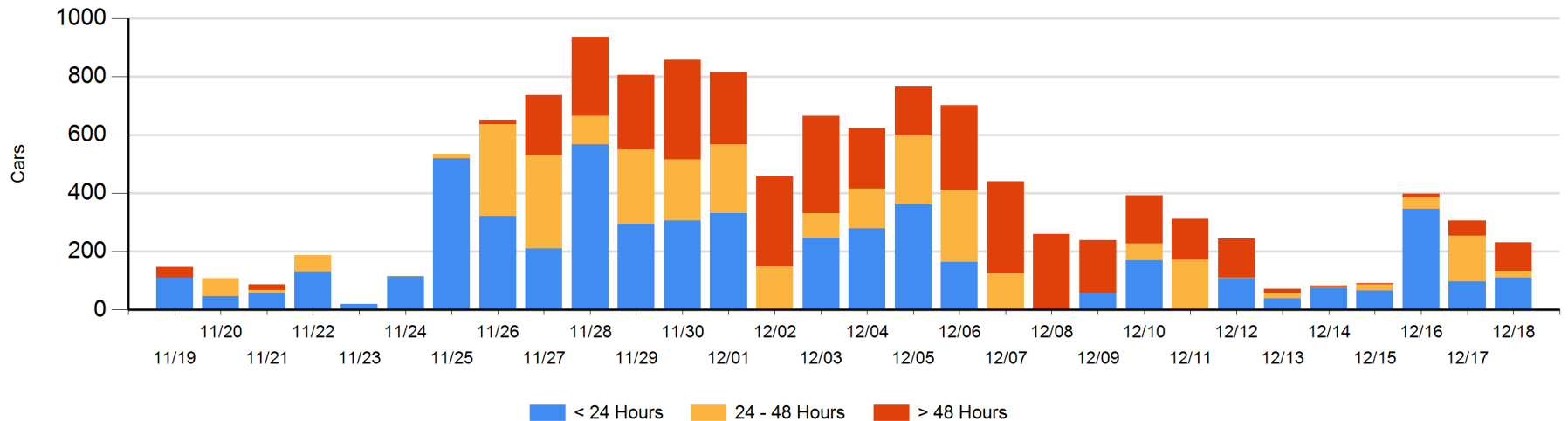
**Today**

	< 24 Hrs	24 - 48 Hrs	> 48-72 Hrs	> 72 Hrs	Total On Hand
CN					0
CP	110	23	85	13	231

**Change in Last 24 Hours**

	< 24 Hrs	24-48 Hrs	48 - 72 Hrs	> 72 Hrs
CN	-74	-11	-40	
CP	87	-123	85	0

Loaded Cars on Hand Thunder Bay Waiting for Placement - Last 30 Days All Railways



## Measurement Definitions

Loads on Wheels	<p>Count of loaded rail cars including all rail cars that have been released loaded at origin and have not been reported by the railway as unloaded at destination.</p> <p>Counts include all rail cars (hopper cars and boxcars) moving within a pipeline.</p>
Loads Not Moving	<p>Loaded rail cars for which the railways have not reported a movement event for 48 hours or more whether the rail car is at origin, enroute or at destination.</p>
Port Unloads	<p>Count of rail cars reported by railways as unloaded at the western port destinations of Vancouver, Prince Rupert and Thunder Bay.</p> <p>Unload counts include all rail cars (hopper cars and boxcars) unloaded by all receivers including major port terminals, transloaders and other receivers.</p>
Cars Arrived	<p>Count of rail cars reported as arrived at the destination railway terminal.</p>
Cars Received in Interchange	<p>Count of rail cars received in interchange by each railway within a destination railway terminal. Interchange activity is tracked for the Vancouver and Thunder Bay pipelines as applicable.</p>
Cars Delivered in Interchange	<p>Count of rail cars delivered in interchange by each railway within a destination railway terminal. Interchange activity is tracked for the Vancouver and Thunder Bay pipelines as applicable.</p>
Cars Placed for Unloading	<p>Count of rail cars reported by the railways as placed loaded at the receiver's facility for unloading.</p>
Loads on Wheels at Destination	<p>Count of rail cars that remain under load within the destination railway terminal including rail cars that have been reported as placed for unloading but not yet reported as unloaded.</p>
Waiting Placement for Unloading	<p>Count of rail cars that have been reported as arrived at the destination railway terminal but not reported as placed for unloading by the railway.</p> <p>For the Ports of Vancouver, Prince Rupert and Thunder Bay the count of rail cars waiting placement for unloading is categorized by age – i.e. the elapsed time from arrival at destination to the current report date.</p>