

Loads on Wheels

- System wide loads on wheels declined slightly in the prior 24 hours - loads now at 10,945 - in line with the trailing 30 day average
- In total loads on wheels decreased by 77 cars reflecting a decline in CN volumes offset by an increase in CP volumes.
- CN volumes declined in 3 of 5 corridors namely Vancouver (-208), USA (-114) and Prince Rupert (-227) offset by increases in the Thunder Bay and E Canada corridors. System wide CN loads on wheels are now at 5,624 - in line with the trailing 30 day average.
- CP volumes increased in 3 of 5 corridors including Vancouver (+222), USA (+137) and E Canada (+52) offset by lower volumes in the Thunder Bay corridor (-108). System wide loads at 5,212 - 3% above the trailing 30 day average.
- Vancouver now at 6,105, Prince Rupert at 1,281 and Thunder Bay at 1,686.

Loads Not Moving

- The count of loaded cars not moving on CN and CP for 48 hours or more declined by 210 cars in the prior 24 hours; total cars on CN and CP not moving for 48 hours now at 1,728.
- CN
 - The count of cars not moving declined by 149 cars on a net basis in the prior 24 hours - loads on wheels now idle for 48 hours or more at 548.
 - Principal changes are in the Vancouver (-113) and USA (-93) corridors.
 - 49% of idle cars (268) are destined to Vancouver with nearly 70% of these dwelling in Vancouver proper.
- CP
 - CP counts declined by 61 cars led by Thunder Bay (-201) offset by increases in other corridors - idle cars now at 1,180
 - 83% of cars are dwelling at origin with more than 350 cars dwelling loaded at origin for 4 days or more.

Port Performance

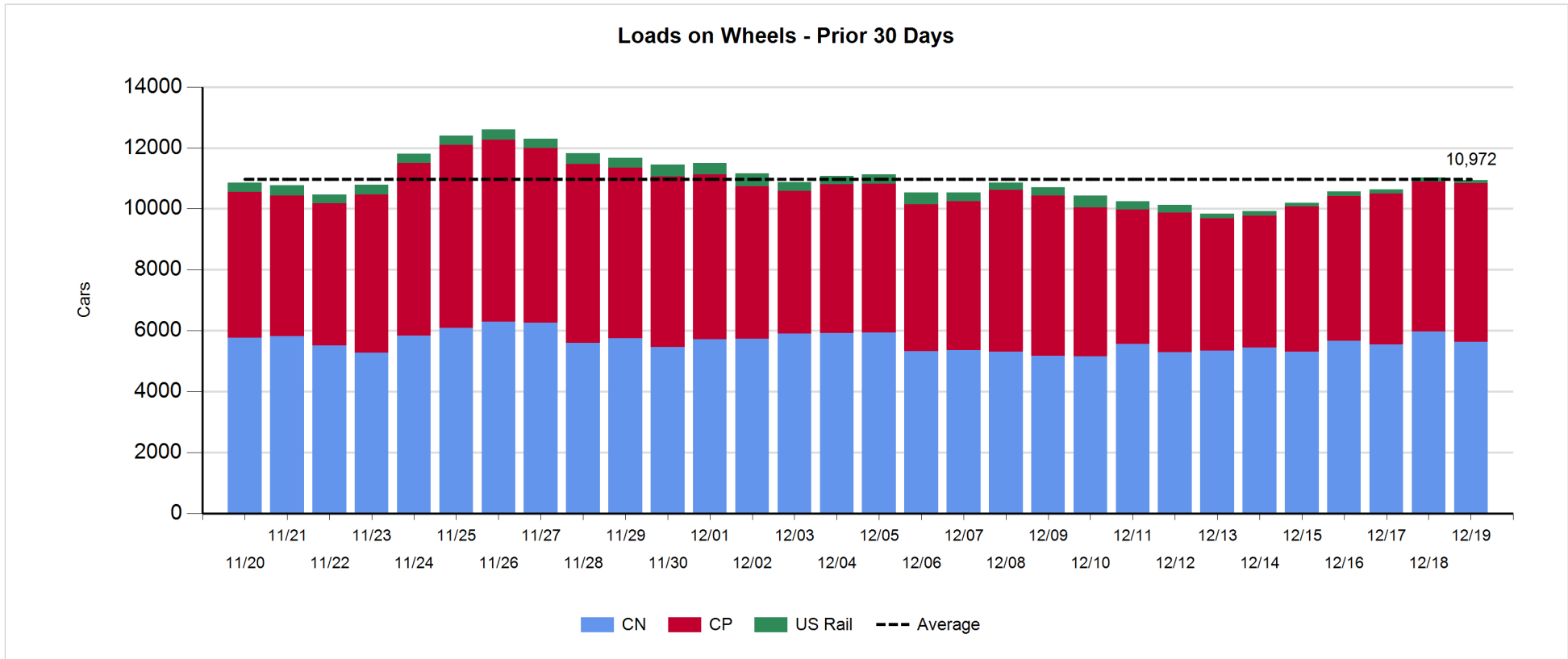
- CN and CP unloaded a total of 1,235 cars at the three western ports - 9% higher than unloads the same day last week. Through the first 2 days of week 21 unloads are tracking 3% below last week's pace with Prince Rupert (+8%) and Vancouver (+7%) ahead of last week's pace and Thunder Bay (-34%) trailing.
- Vancouver
 - Total of 697 cars reported unloaded by CN and CP at the Port of Vancouver; CN - 381 and CP - 316.
 - There are currently 906 cars on hand at Vancouver waiting placement for unloading - 235 of these cars arrived at Vancouver more than 72 hours ago.
- Thunder Bay
 - Total of 263 cars reported unloaded by CN and CP in the prior 24 hours.
 - Cars at Thunder Bay waiting placement now at 162 - nearly all CP.

Daily Loads on Wheels - 12/19/2017

	E Canada	Prince Rupert	Thunder Bay	USA/MEX	Vancouver	Total
CN	831	1,280	457	164	2,892	5,624
CP	159	1	1,229	623	3,200	5,212
Short Line	4				13	17
US Rail				92		92
	994	1,281	1,686	879	6,105	10,945

Change in Loads on Wheels - Prior 24 Hours

	E Canada	Prince Rupert	Thunder Bay	USA/MEX	Vancouver	Total
CN	118	-227	80	-114	-208	-351
CP	52	1	-108	137	222	304
Short Line	0				-7	-7
US Rail				-23		-23
	170	-226	-28	0	7	-77



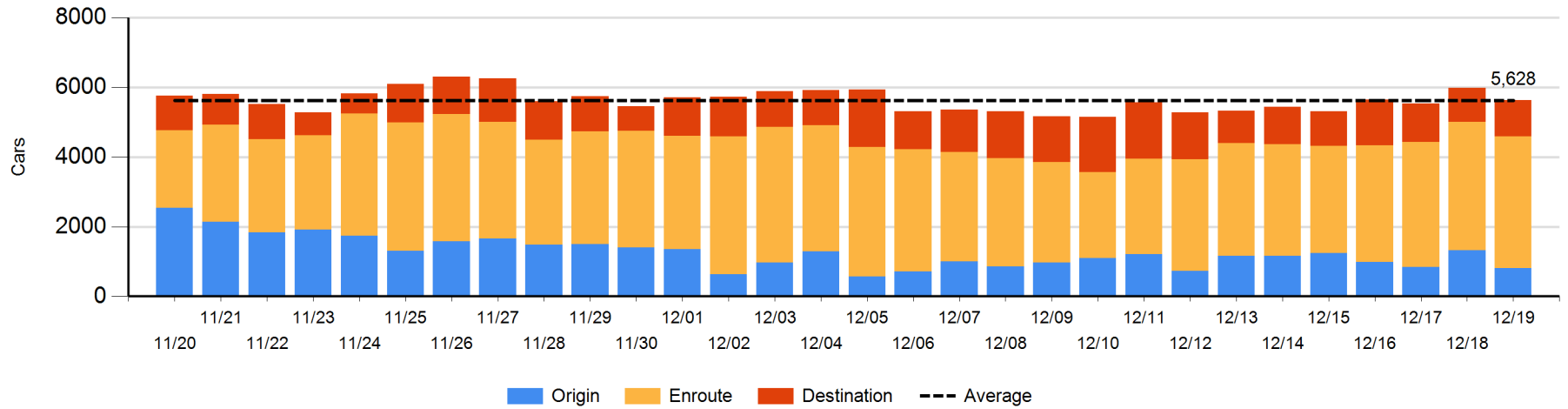
Daily Loads on Wheels By Pipeline Location - 12/19/2017

	E Canada	Prince Rupert	Thunder Bay	USA/MEX	Vancouver	Total
CN						
Origin	97	113	201	14	380	805
Enroute	570	1,154	236	134	1,687	3,781
Destination	164	13	20	16	837	1,050
	831	1,280	457	164	2,904	5,636
CP						
Origin	36		314	352	1,789	2,491
Enroute	97		723	264	1,017	2,101
Destination	26	1	192	7	394	620
	159	1	1,229	623	3,200	5,212
US Rail / Short Line						
Origin						
Enroute				51		51
Destination	4			41	13	58
	4			92	13	109

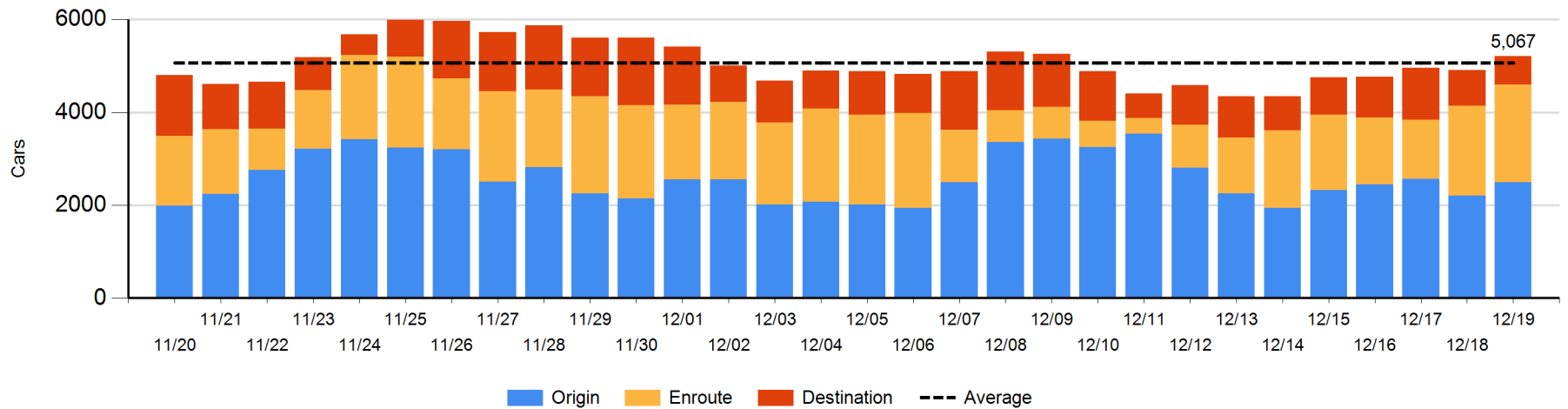
Change in Daily Loads on Wheels By Pipeline Location - Prior 24 Hours

	E Canada	Prince Rupert	Thunder Bay	USA/MEX	Vancouver	Total
CN						
Origin	37	-349	45	8	-261	-520
Enroute	-6	197	102	-20	-167	106
Destination	87	-75	-67	-102	220	63
	118	-227	80	-114	-208	-351
CP						
Origin	4		-129	160	257	292
Enroute	75		227	-23	-122	157
Destination	-27	1	-206	0	87	-145
	52	1	-108	137	222	304
US Rail / Short Line						
Origin						
Enroute	-1			-14		-15
Destination	1			-9	-7	-15
	0			-23	-7	-30

CN Loads on Wheels by Pipeline Location - 12/19/2017



CP Loads on Wheels by Pipeline Location - 12/19/2017

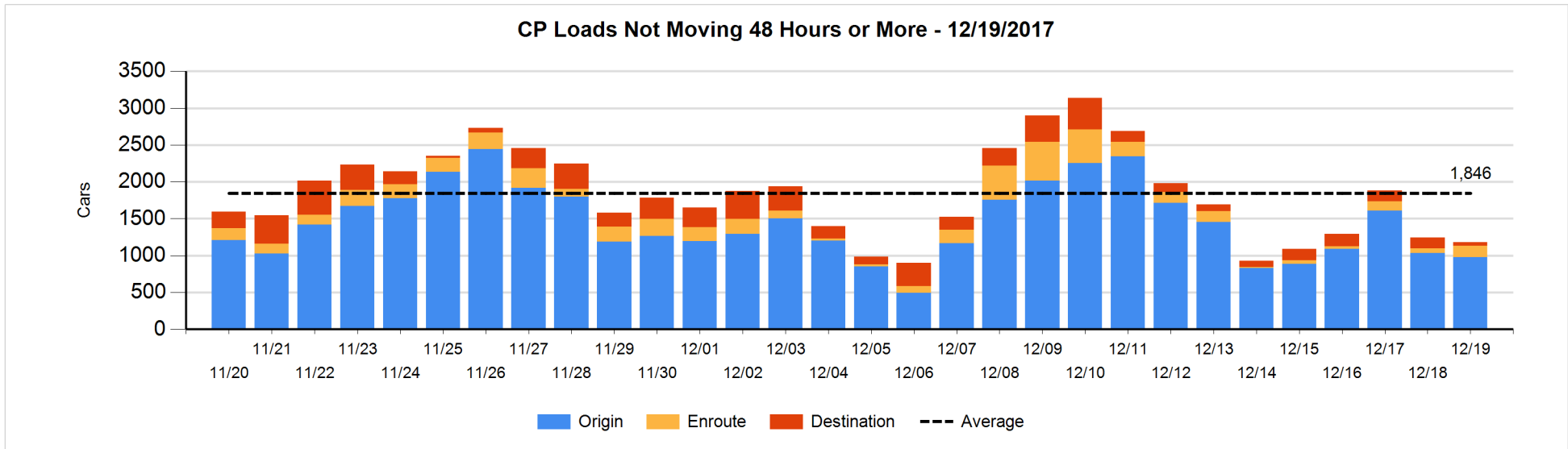
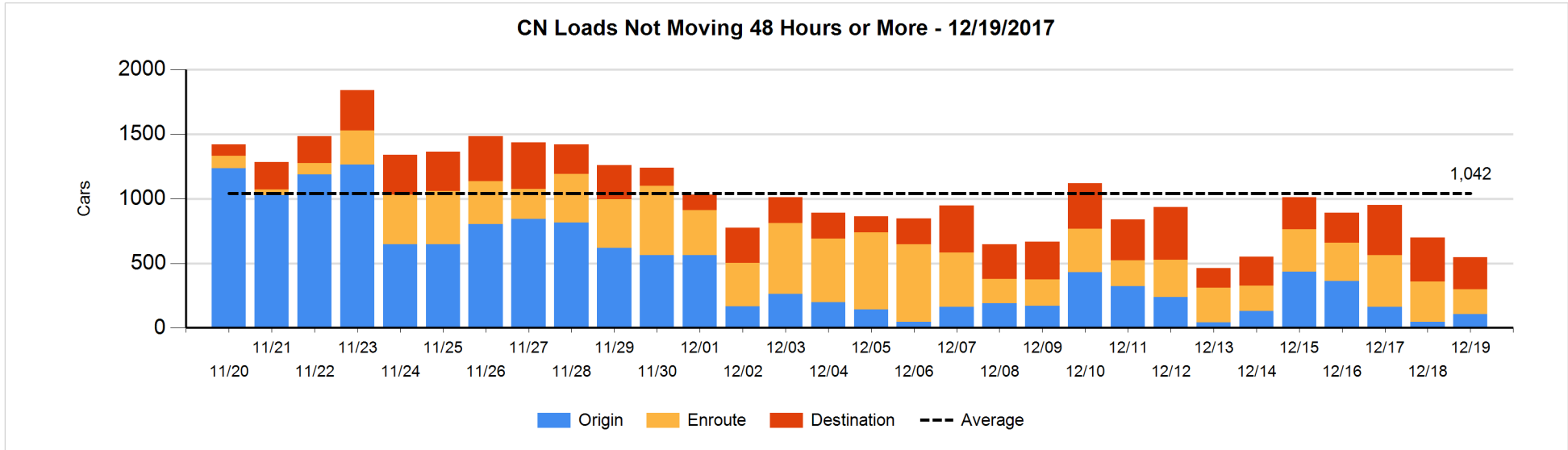


Loads Not Moving 48 Hours or More - 12/19/2017

	E Canada	Prince Rupert	Thunder Bay	USA/MEX	Vancouver	Total
CN						
Origin		13	52		39	104
Enroute	52	71	1	21	49	194
Destination	56	2	7	5	180	250
	108	86	60	26	268	548
CP						
Origin	9		79	91	801	980
Enroute	7			109	37	153
Destination	11		25		11	47
	27		104	200	849	1180
US Rail / Short Line						
Origin						
Enroute				16		16
Destination				6	9	15
				22	9	31

Change in Loads Not Moving 48 Hours or More - 12/19/2017

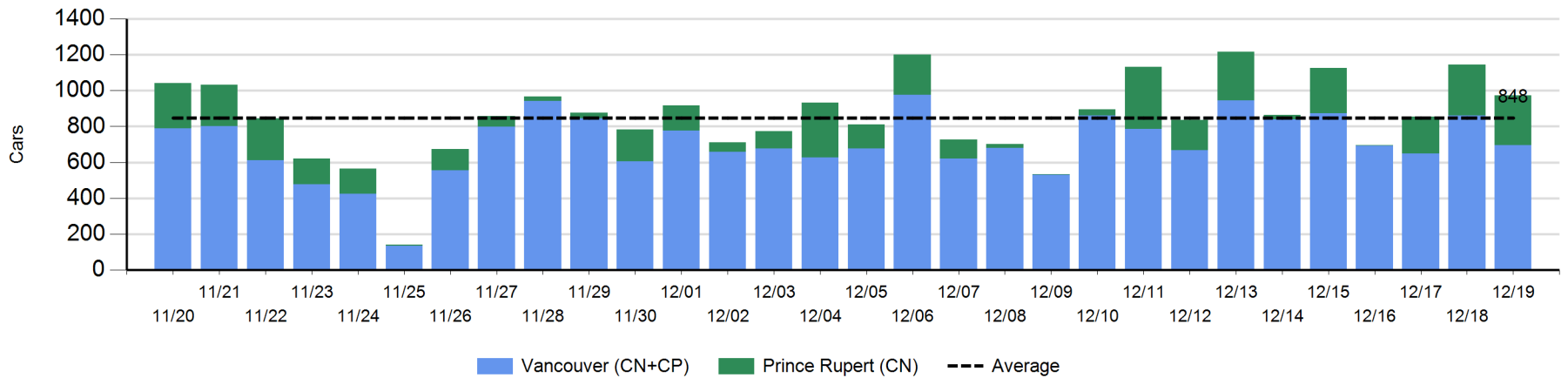
	E Canada	Prince Rupert	Thunder Bay	USA/MEX	Vancouver	Total
CN						
Origin		0	52		8	60
Enroute	21	10	-8	12	-155	-120
Destination	-15	0	-3	-105	34	-89
	6	10	41	-93	-113	-149
CP						
Origin	4		-90	-1	35	-52
Enroute	0			86	2	88
Destination	6		-111		8	-97
	10		-201	85	45	-61
US Rail / Short Line						
Origin						
Enroute				-6		-6
Destination				0	0	0
				-6	0	-6



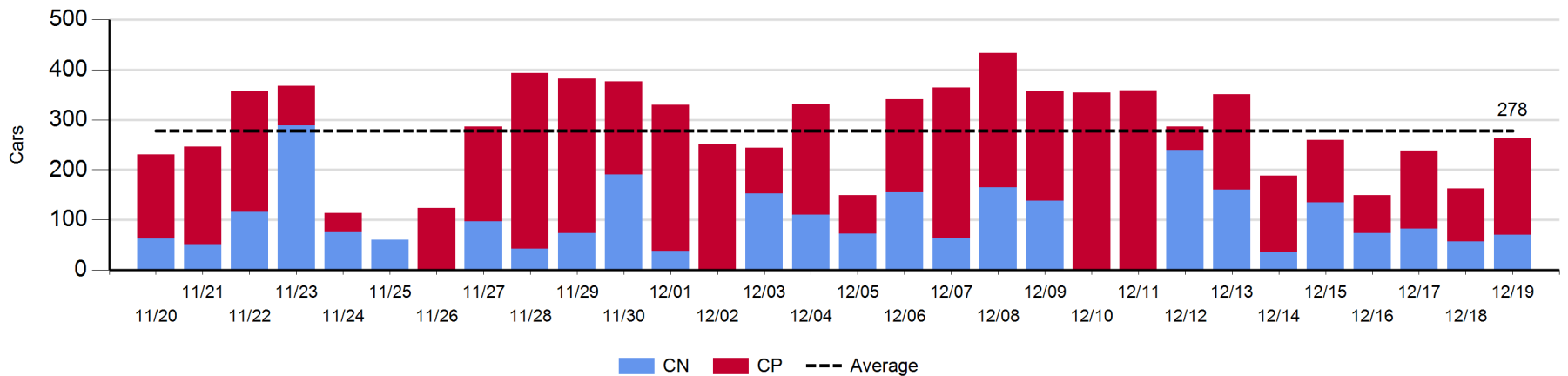
Port Unloads - 12/19/2017

	Prince Rupert	Vancouver	West Coast Total	Thunder Bay	Total
CN	275	381	656	70	726
CP		316	316	193	509
	275	697	972	263	1,235

West Coast Port Unloads - Prior 30 Days



Thunder Bay Port Unloads - Prior 30 Days



Port Terminal Status

Vancouver

Daily Activity for 12/19/2017

	Cars Arrived	Cars Received in Interchange	Cars Delivered in Interchange	Cars Placed for Unloading	Loads on Wheels at Destination As of 12/19/2017
CN	640	5	1	425	837
CP	342		5	338	394
SRY		1		8	13

Port Unloads

	12/19	12/18	Week To Date	Last Week
CN	381	351	732	2,995
CP	316	510	826	2,452
SRY	8	14	22	66

Age Profile of Loaded Cars Waiting Placement for Unloading

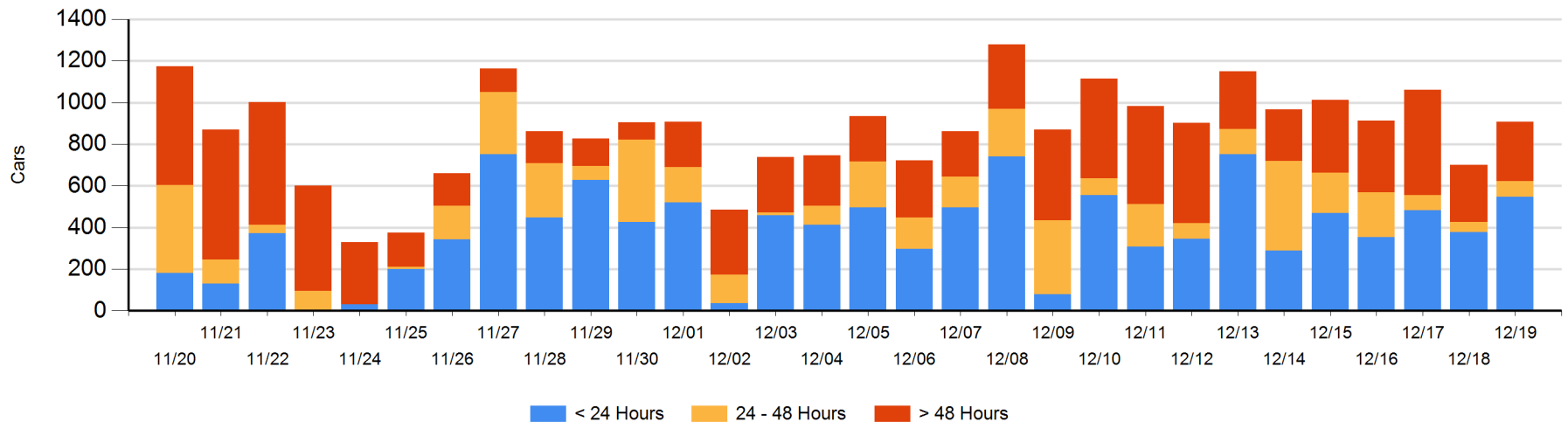
Today

	< 24 Hrs	24 - 48 Hrs	> 48-72 Hrs	> 72 Hrs	Total On Hand
CN	429	62	42	129	662
CP	119	13	6	106	244
SRY				2	2

Change in Last 24 Hours

	< 24 Hrs	24-48 Hrs	48 - 72 Hrs	> 72 Hrs
CN	171	20	18	20
CP	0	7	0	-29
SRY				0

Loaded Cars on Hand Vancouver Waiting for Placement - Last 30 Days All Railways



Port Terminal Status

Prince Rupert

Daily Activity for 12/19/2017

	Cars Arrived	Cars Received in Interchange	Cars Delivered in Interchange	Cars Placed for Unloading	Loads on Wheels at Destination As of 12/19/2017
CN	209			201	13

Port Unloads

	12/19	12/18	Week To Date	Last Week
CN	275	283	558	1,277

Age Profile of Loaded Cars Waiting Placement for Unloading

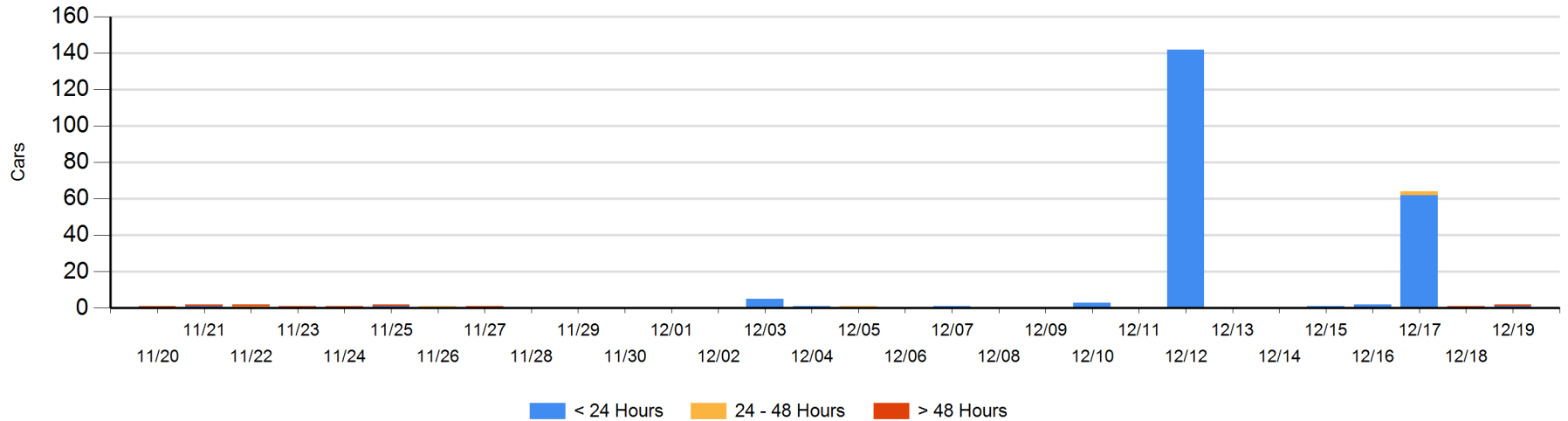
Today

	< 24 Hrs	24 - 48 Hrs	> 48-72 Hrs	> 72 Hrs	Total On Hand
CN	1			1	2

Change in Last 24 Hours

	< 24 Hrs	24-48 Hrs	48 - 72 Hrs	> 72 Hrs
CN	1		-1	1

Loaded Cars on Hand Prince Rupert Waiting for Placement - Last 30 Days All Railways



Port Terminal Status

Thunder Bay

Daily Activity for 12/19/2017

	Cars Arrived	Cars Received in Interchange	Cars Delivered in Interchange	Cars Placed for Unloading	Loads on Wheels at Destination As of 12/19/2017
CN	3				20
CP	56			128	192

Port Unloads

	12/19	12/18	Week To Date	Last Week
CN	70	57	127	728
CP	193	106	299	1,102

Age Profile of Loaded Cars Waiting Placement for Unloading

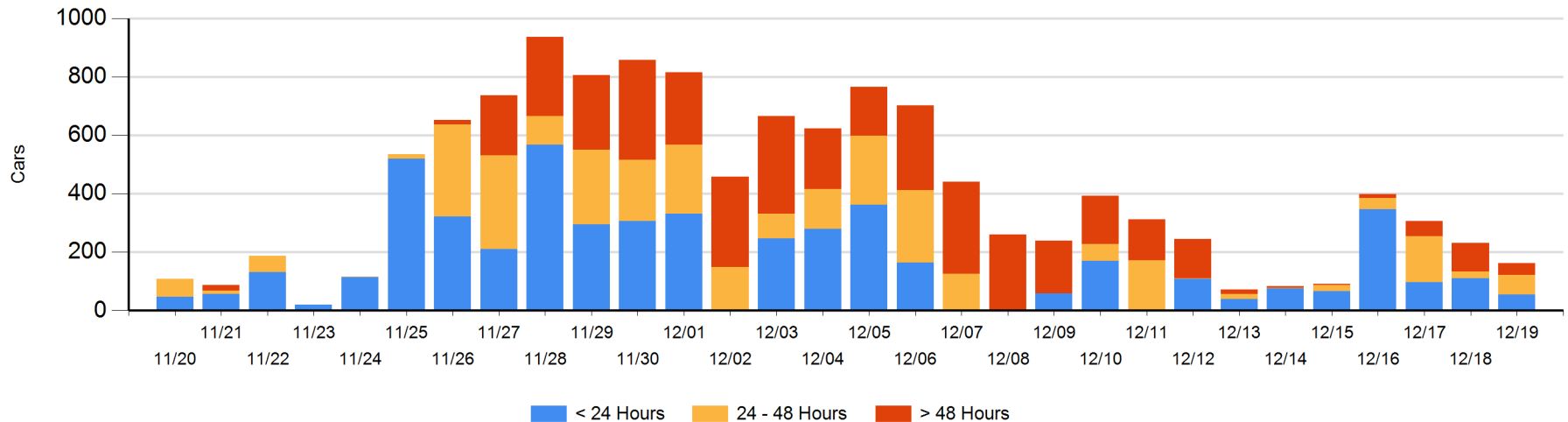
Today

	< 24 Hrs	24 - 48 Hrs	> 48-72 Hrs	> 72 Hrs	Total On Hand
CN	3				3
CP	52	66		41	159

Change in Last 24 Hours

	< 24 Hrs	24-48 Hrs	48 - 72 Hrs	> 72 Hrs
CN	3			
CP	-58	43	-85	28

Loaded Cars on Hand Thunder Bay Waiting for Placement - Last 30 Days All Railways



Measurement Definitions

Loads on Wheels	<p>Count of loaded rail cars including all rail cars that have been released loaded at origin and have not been reported by the railway as unloaded at destination.</p> <p>Counts include all rail cars (hopper cars and boxcars) moving within a pipeline.</p>
Loads Not Moving	<p>Loaded rail cars for which the railways have not reported a movement event for 48 hours or more whether the rail car is at origin, enroute or at destination.</p>
Port Unloads	<p>Count of rail cars reported by railways as unloaded at the western port destinations of Vancouver, Prince Rupert and Thunder Bay.</p> <p>Unload counts include all rail cars (hopper cars and boxcars) unloaded by all receivers including major port terminals, transloaders and other receivers.</p>
Cars Arrived	<p>Count of rail cars reported as arrived at the destination railway terminal.</p>
Cars Received in Interchange	<p>Count of rail cars received in interchange by each railway within a destination railway terminal. Interchange activity is tracked for the Vancouver and Thunder Bay pipelines as applicable.</p>
Cars Delivered in Interchange	<p>Count of rail cars delivered in interchange by each railway within a destination railway terminal. Interchange activity is tracked for the Vancouver and Thunder Bay pipelines as applicable.</p>
Cars Placed for Unloading	<p>Count of rail cars reported by the railways as placed loaded at the receiver's facility for unloading.</p>
Loads on Wheels at Destination	<p>Count of rail cars that remain under load within the destination railway terminal including rail cars that have been reported as placed for unloading but not yet reported as unloaded.</p>
Waiting Placement for Unloading	<p>Count of rail cars that have been reported as arrived at the destination railway terminal but not reported as placed for unloading by the railway.</p> <p>For the Ports of Vancouver, Prince Rupert and Thunder Bay the count of rail cars waiting placement for unloading is categorized by age – i.e. the elapsed time from arrival at destination to the current report date.</p>