

## Loads on Wheels

- Loads on wheels increased during the prior 24 hours nudging the 11,000 car threshold - loads on wheels now at 10,972 - 11% above the trailing 30 day average
- Loads on wheels rose 6% (+632 cars) on a net basis reflecting an increase on CN (+629) with CP largely unchanged.
- CN volumes reflect an increase in the Vancouver corridor (+671). System wide CN loads on wheels now at 5,952 - the highest level in the prior 30 days and 12% above the trailing 30 day average.
- CP volumes declined in the Vancouver corridor (-125) offset by nominal increases in other corridors. CP system wide loads on wheels now at 4,747 - 11% above the trailing 30 day average.
- Vancouver now at 6,554 and Prince Rupert at 1,543 - unchanged from yesterday.

## Hopper Car Rationing

- **Preliminary indications are that CN rationed an estimated 2,000 hopper car orders for week 29 and in the order of 700+ for the current grain week (week 30).**

## Loads Not Moving

- The number of cars not moving for 48+ hours on CN and CP declined by 429 cars on a net basis in the prior 24 hours reflecting declines for both CN and CP - idle cars on CN and CP now at 4,580.
- CN
  - The count of idle cars declined nominally (-78) in the prior 24 hours - idle cars on CN now at 1,641, the lowest level in the prior 3 weeks - **1,000+ have been idle for 4+ days - unchanged in the last 24 hours; 550 have not moved in 7 days - a decline of 50% in the last 7 days and 400 for 10+ days - largely unchanged from yesterday but a 50% improvement in the last 3 days.**
  - Vancouver (831) and Prince Rupert (328) represent 70% of all idle cars - 70% of all idle cars are dwelling at origin
- CP
  - CP counts decreased by 10% (351 cars) in prior 24 hours - idle cars now at 2,939 - **double the level 7 days ago; more than 2,000 of these cars have been idle for 4+ days - a 17% increase in the last 24 hours and the 5th consecutive day this has grown; 800 have not moved for 7+ days - a 40% jump in the last 24 hours.**
  - Vancouver continues to account for the majority of idle cars (87%) with 86% of all idle cars dwelling at origin locations.

## Port Performance

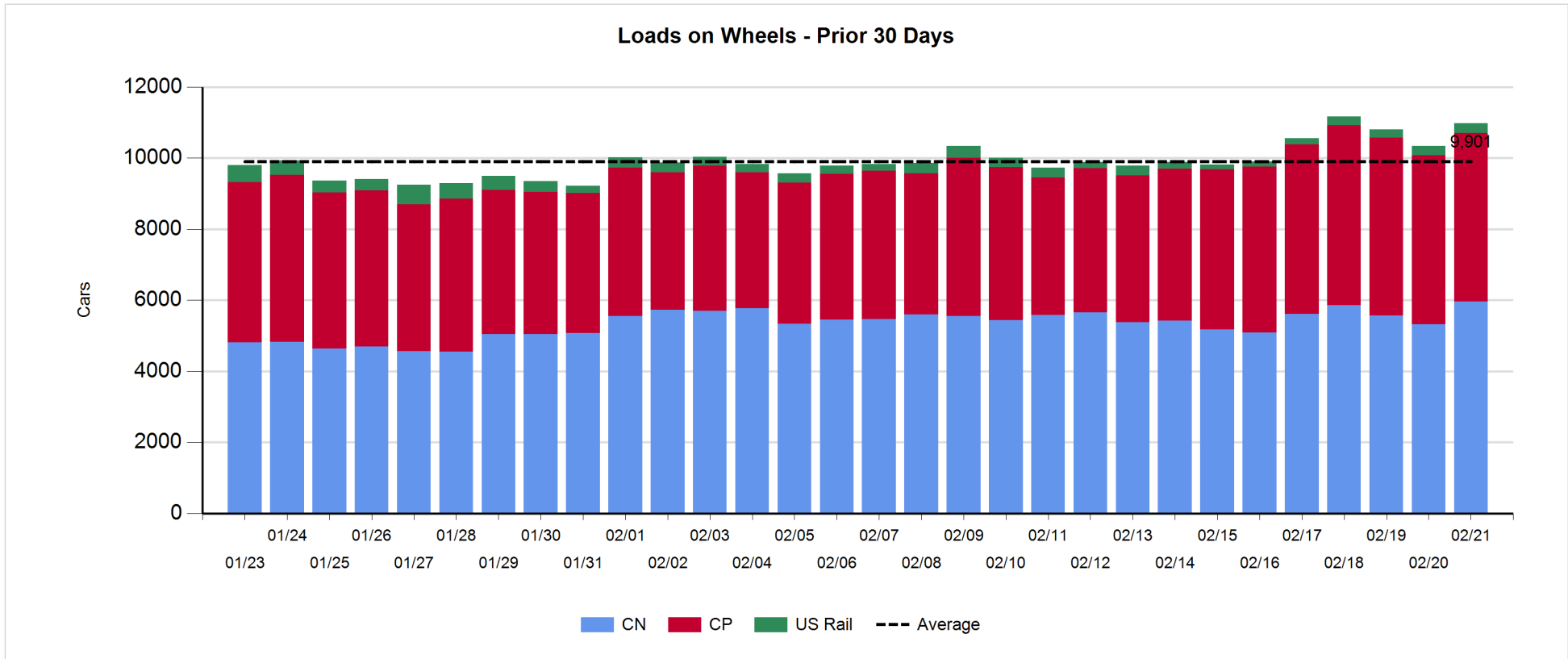
- CN and CP reported 541 cars unloaded at the three western ports - three days in, week 30 unloads continue to lag last week's pace reflecting marginally higher unloads at Prince Rupert and lower unloads at Vancouver.
- Vancouver
  - 349 cars reported unloaded by CN and CP at the Port of Vancouver; CN - 152 and CP - 197
  - There are currently only 368 cars on hand at Vancouver waiting placement for unloading with 600+ cars arriving at the port in the last 24 hours; CN and CP have fewer than 500 cars enroute to Vancouver west of Alberta - 60% (3,900) of all cars destined to Vancouver are currently at origin locations awaiting movement - 70% on CP.
- Prince Rupert
  - There are currently less than 350 cars west of Jasper and 500+ cars (33% of loads on wheels) sitting at origin locations of which more than 60% have not moved for 2+ days; unloads are likely to continue to be challenged in the coming week.

**Daily Loads on Wheels - 2/21/2018**

	E Canada	Prince Rupert	Thunder Bay	USA/MEX	Vancouver	Total
CN	898	1,543		591	2,920	5,952
CP	483		5	663	3,596	4,747
Short Line	43				38	81
US Rail				192		192
	1,424	1,543	5	1,446	6,554	10,972

**Change in Loads on Wheels - Prior 24 Hours**

	E Canada	Prince Rupert	Thunder Bay	USA/MEX	Vancouver	Total
CN	-43	8		-7	671	629
CP	61		0	53	-125	-11
Short Line	18				5	23
US Rail				-9		-9
	36	8	0	37	551	632

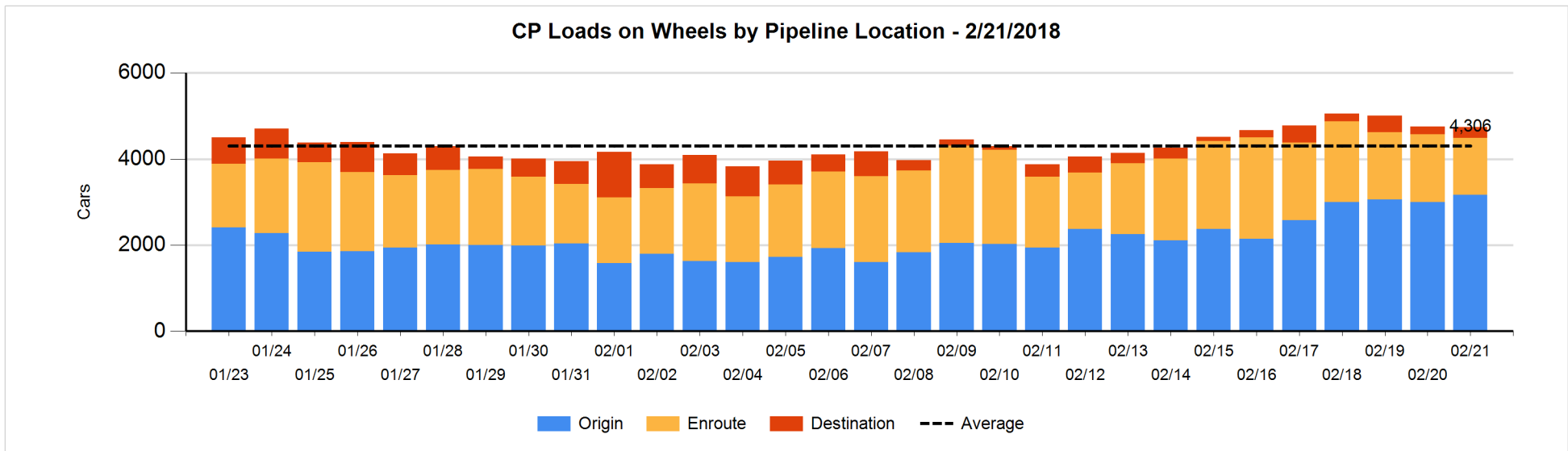
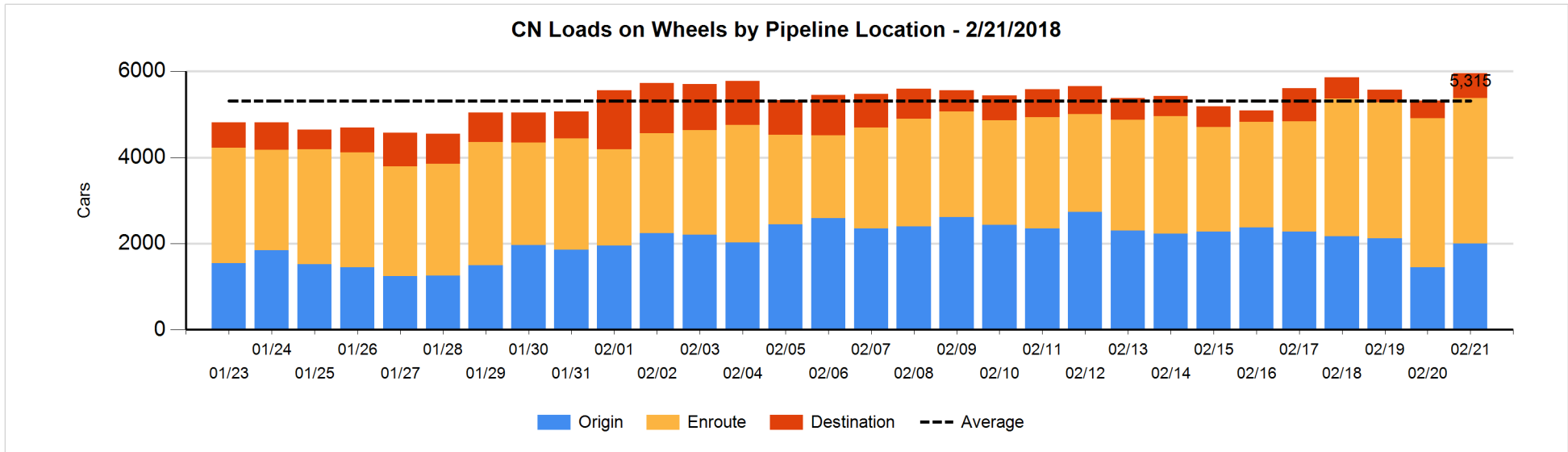


**Daily Loads on Wheels By Pipeline Location - 2/21/2018**

	E Canada	Prince Rupert	Thunder Bay	USA/MEX	Vancouver	Total
CN						
Origin	47	512		160	1,281	2,000
Enroute	783	922		330	1,339	3,374
Destination	68	109		101	300	578
	898	1,543		591	2,920	5,952
CP						
Origin	304			190	2,671	3,165
Enroute	179			451	688	1,318
Destination			5	22	237	264
	483		5	663	3,596	4,747
US Rail / Short Line						
Origin						
Enroute	40			83		123
Destination	3			109	38	150
	43			192	38	273

**Change in Daily Loads on Wheels By Pipeline Location - Prior 24 Hours**

	E Canada	Prince Rupert	Thunder Bay	USA/MEX	Vancouver	Total
CN						
Origin	0	67		2	478	547
Enroute	-74	29		-37	-5	-87
Destination	31	-88		28	198	169
	-43	8		-7	671	629
CP						
Origin	84			-48	132	168
Enroute	-23			101	-335	-257
Destination			0	0	78	78
	61		0	53	-125	-11
US Rail / Short Line						
Origin						
Enroute	16			2		18
Destination	2			-11	5	-4
	18			-9	5	14

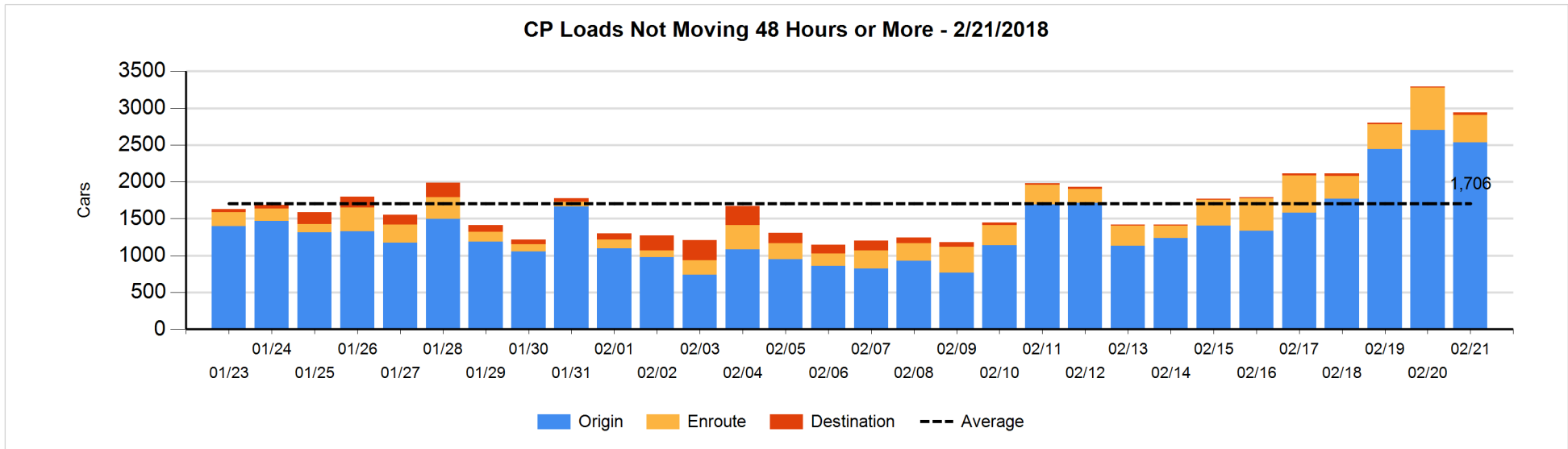
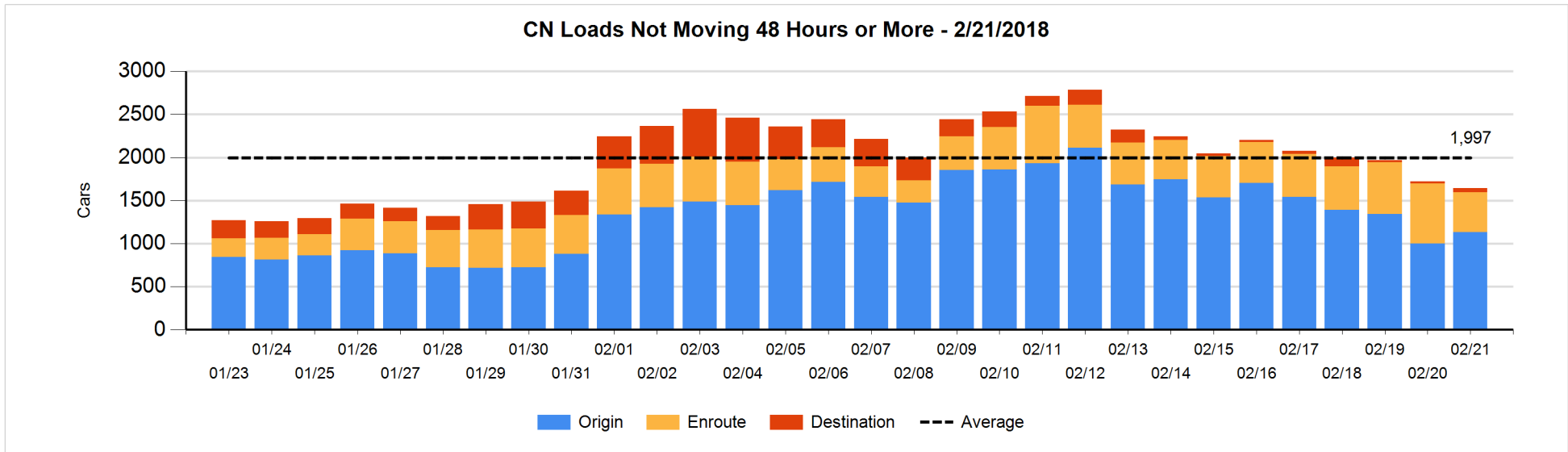


**Loads Not Moving 48 Hours or More - 2/21/2018**

	E Canada	Prince Rupert	Thunder Bay	USA/MEX	Vancouver	Total
CN						
Origin	47	292		158	633	1130
Enroute	127	37		112	189	465
Destination				37	9	46
	174	329		307	831	1641
CP						
Origin	167			64	2305	2536
Enroute	20			94	259	373
Destination			5	22	3	30
	187		5	180	2567	2939
US Rail / Short Line						
Origin						
Enroute	4			26		30
Destination	1			8	7	16
	5			34	7	46

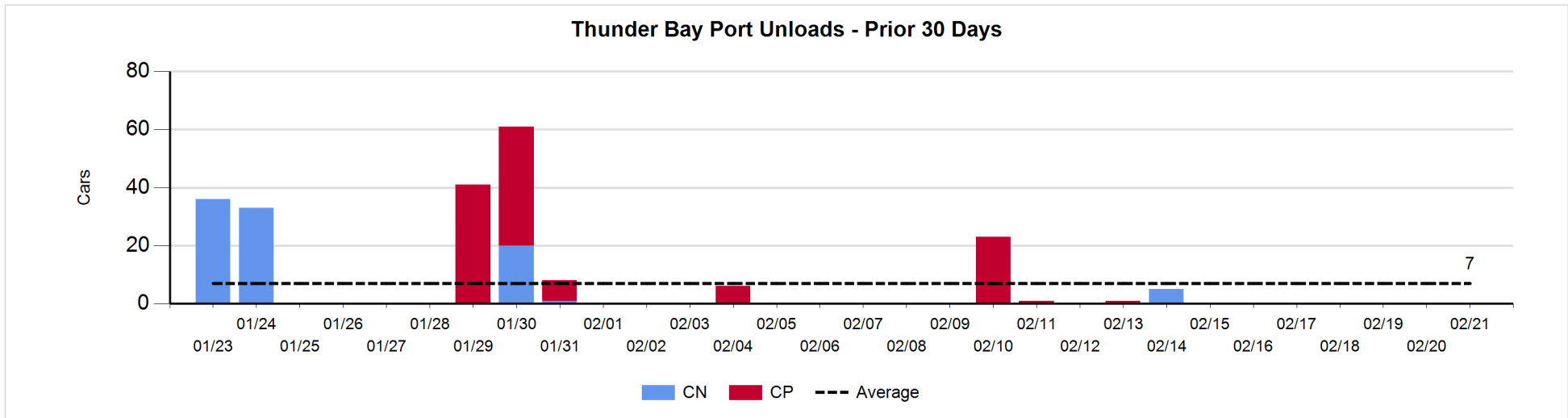
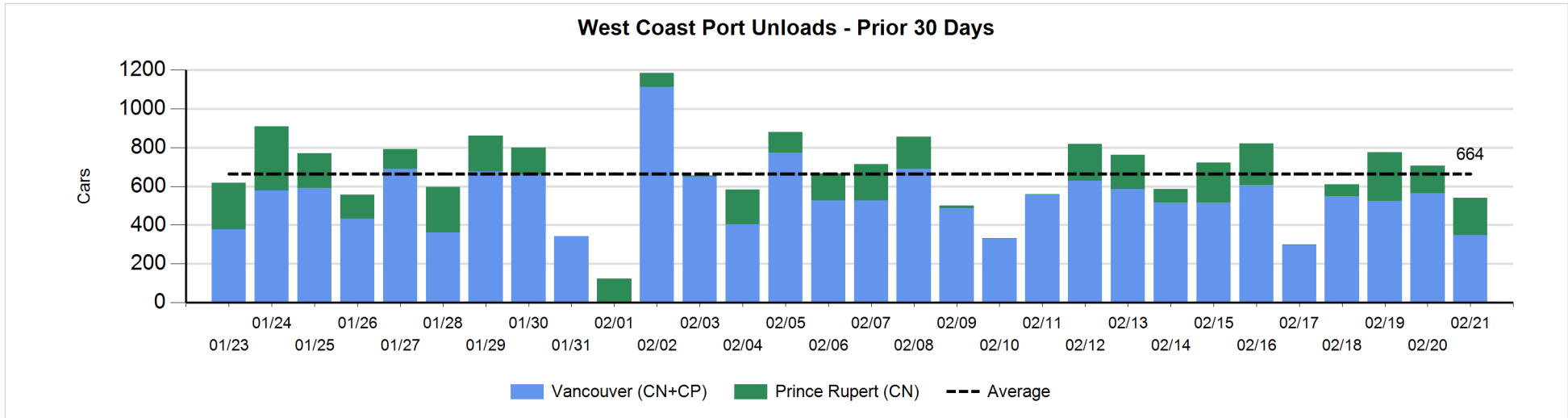
**Change in Loads Not Moving 48 Hours or More - 2/21/2018**

	E Canada	Prince Rupert	Thunder Bay	USA/MEX	Vancouver	Total
CN						
Origin	25	28		105	-29	129
Enroute	-48	-83		-57	-41	-229
Destination	-6	-1		27	2	22
	-29	-56		75	-68	-78
CP						
Origin	0			-71	-93	-164
Enroute	-67			-128	-9	-204
Destination			0	22	-5	17
	-67		0	-177	-107	-351
US Rail / Short Line						
Origin						
Enroute	-3			1		-2
Destination	0			-4	3	-1
	-3			-3	3	-3



**Port Unloads - 2/21/2018**

	Prince Rupert	Vancouver	West Coast Total	Thunder Bay	Total
CN	192	152	344		344
CP		197	197		197
	192	349	541		541



**Port Terminal Status**

**Vancouver**

Daily Activity for 2/21/2018

	Cars Arrived	Cars Received in Interchange	Cars Delivered in Interchange	Cars Placed for Unloading	Loads on Wheels at Destination As of 2/21/2018
CN	156	210	29	158	300
CP	476	11	211	308	237
SRY		19		2	38

**Port Unloads**

	02/21	02/20	Week To Date	Last Week
CN	152	141	549	1,825
CP	197	424	888	1,873
SRY	3	12	22	49

**Age Profile of Loaded Cars Waiting Placement for Unloading**

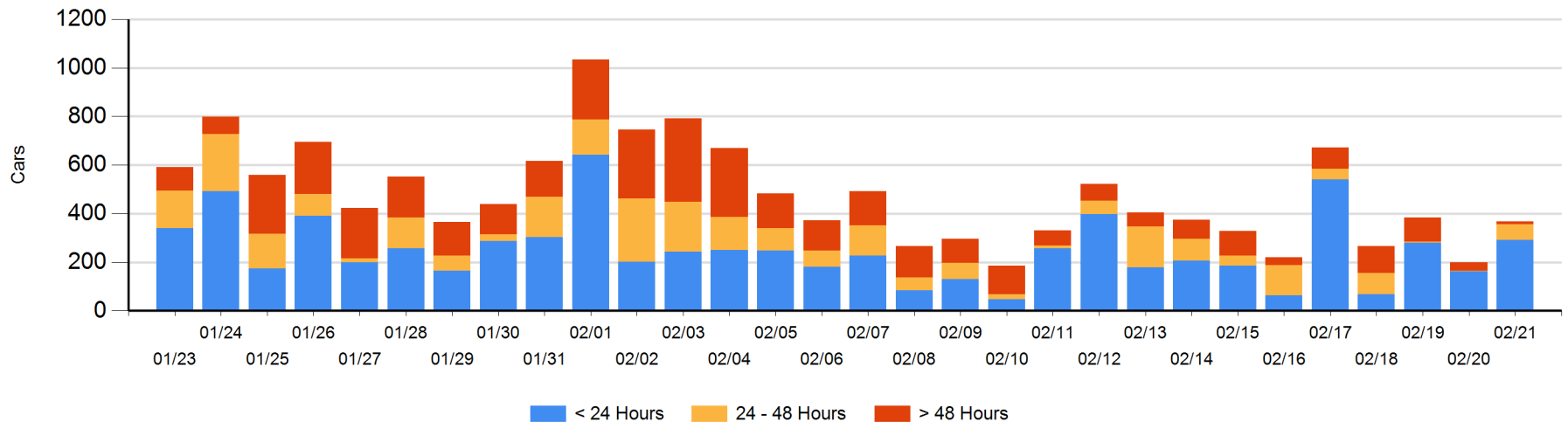
**Today**

	< 24 Hrs	24 - 48 Hrs	> 48-72 Hrs	> 72 Hrs	Total On Hand
CN	106	42	1	3	152
CP	186	23	2	5	216
SRY					0

**Change in Last 24 Hours**

	< 24 Hrs	24-48 Hrs	48 - 72 Hrs	> 72 Hrs
CN	24	41	-2	-4
CP	106	21	2	-20
SRY				

**Loaded Cars on Hand Vancouver Waiting for Placement - Last 30 Days All Railways**





**Port Terminal Status**

**Prince Rupert**

Daily Activity for 2/21/2018

	Cars Arrived	Cars Received in Interchange	Cars Delivered in Interchange	Cars Placed for Unloading	Loads on Wheels at Destination As of 2/21/2018
CN	105			105	109

**Port Unloads**

	02/21	02/20	Week To Date	Last Week
CN	192	141	586	918

**Age Profile of Loaded Cars Waiting Placement for Unloading**

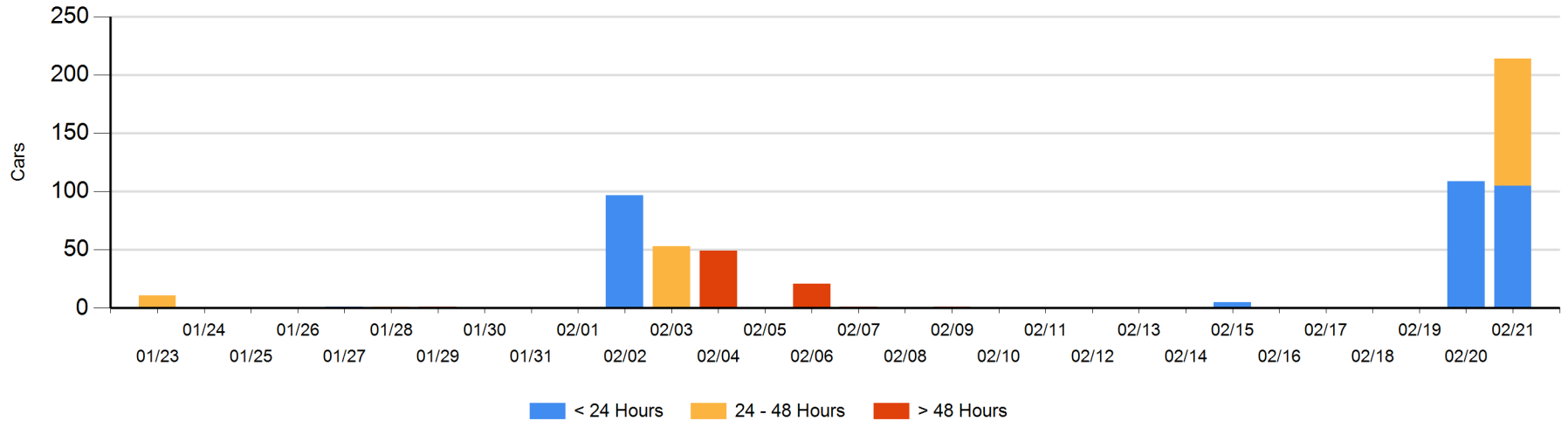
**Today**

	< 24 Hrs	24 - 48 Hrs	> 48-72 Hrs	> 72 Hrs	Total On Hand
CN	105	109			214

**Change in Last 24 Hours**

	< 24 Hrs	24-48 Hrs	48 - 72 Hrs	> 72 Hrs
CN	-4	109		

Loaded Cars on Hand Prince Rupert Waiting for Placement - Last 30 Days All Railways



**Port Terminal Status**

**Thunder Bay**

Daily Activity for 2/21/2018

	Cars Arrived	Cars Received in Interchange	Cars Delivered in Interchange	Cars Placed for Unloading	Loads on Wheels at Destination As of 2/21/2018
CN					
CP					5

**Port Unloads**

	02/21	02/20	Week To Date	Last Week
CN				5
CP				1

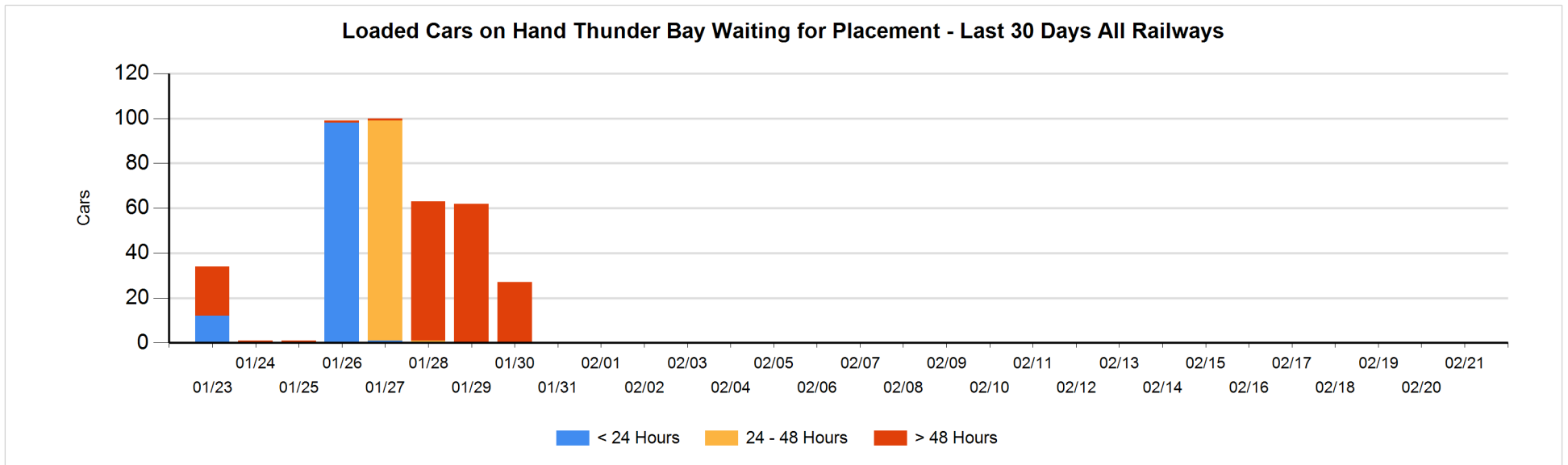
**Age Profile of Loaded Cars Waiting Placement for Unloading**

**Today**

	< 24 Hrs	24 - 48 Hrs	> 48-72 Hrs	> 72 Hrs	Total On Hand
CN					0
CP					0

**Change in Last 24 Hours**

	< 24 Hrs	24-48 Hrs	48 - 72 Hrs	> 72 Hrs
CN				
CP				



## Measurement Definitions

Loads on Wheels	<p>Count of loaded rail cars including all rail cars that have been released loaded at origin and have not been reported by the railway as unloaded at destination.</p> <p>Counts include all rail cars (hopper cars and boxcars) moving within a pipeline.</p>
Loads Not Moving	<p>Loaded rail cars for which the railways have not reported a movement event for 48 hours or more whether the rail car is at origin, enroute or at destination.</p>
Port Unloads	<p>Count of rail cars reported by railways as unloaded at the western port destinations of Vancouver, Prince Rupert and Thunder Bay.</p> <p>Unload counts include all rail cars (hopper cars and boxcars) unloaded by all receivers including major port terminals, transloaders and other receivers.</p>
Cars Arrived	<p>Count of rail cars reported as arrived at the destination railway terminal.</p>
Cars Received in Interchange	<p>Count of rail cars received in interchange by each railway within a destination railway terminal. Interchange activity is tracked for the Vancouver and Thunder Bay pipelines as applicable.</p>
Cars Delivered in Interchange	<p>Count of rail cars delivered in interchange by each railway within a destination railway terminal. Interchange activity is tracked for the Vancouver and Thunder Bay pipelines as applicable.</p>
Cars Placed for Unloading	<p>Count of rail cars reported by the railways as placed loaded at the receiver's facility for unloading.</p>
Loads on Wheels at Destination	<p>Count of rail cars that remain under load within the destination railway terminal including rail cars that have been reported as placed for unloading but not yet reported as unloaded.</p>
Waiting Placement for Unloading	<p>Count of rail cars that have been reported as arrived at the destination railway terminal but not reported as placed for unloading by the railway.</p> <p>For the Ports of Vancouver, Prince Rupert and Thunder Bay the count of rail cars waiting placement for unloading is categorized by age – i.e. the elapsed time from arrival at destination to the current report date.</p>