

Loads on Wheels

- System wide loads on wheels declined for the third consecutive day in the prior 24 hours - loads now at 10,821 - in line with the trailing 30 day average
- In total loads on wheels decreased marginally reflecting marginal declines in both CN and CP volumes.
- System wide CN loads on wheels are now at 5,278 - 2% below the trailing 30 day average.
- CP system wide loads on wheels are now at 5,183 - 2% above the trailing 30 day average.
- Vancouver now at 6,643, Prince Rupert at 742 and Thunder Bay at 1,027. Vancouver volumes are 7% above the trailing 30 day average while Prince Rupert (-34%) and Thunder Bay (-36%) are well below their trailing 30 day averages.

Loads Not Moving

- The count of loaded cars not moving on CN and CP for 48 hours or more declined by 309 cars in the prior 24 hours; total cars on CN and CP not moving for 48 hours now at 5,941 after peaking on December 31st at more than 6,200.
- CN
 - The count of cars not moving declined by 106 cars on a net basis in the prior 24 hours however remains at the highest levels seen in the prior 30 days - loads on wheels now idle for 48 hours or more at 2,453.
 - The Vancouver corridor accounts for 56% of all cars with nearly 900 cars sitting loaded at origin locations.
- CP
 - CP counts decreased by 203 cars although much like CN, CP counts remain near the highest levels seen in the prior 30 days - idle cars now at 3,488
 - 78% of cars are dwelling at origin with more than 2,200 cars at origin destined for Vancouver. Of these more than 1,600 cars have been idle at origin for more than 4 days.

Port Performance

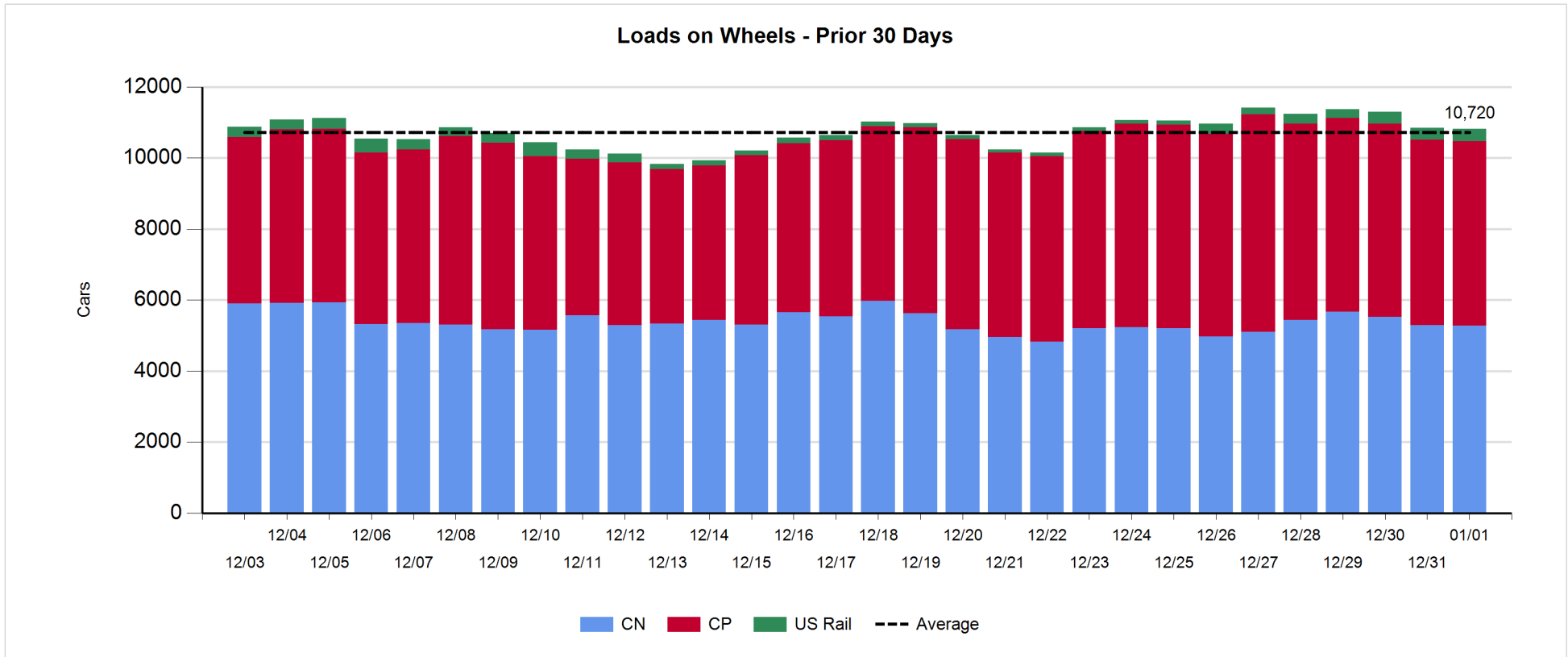
- CN and CP reported a total of 48 cars unloaded at the three western ports - all at Vancouver.
- Vancouver
 - Total of 48 cars reported unloaded by CN and CP at the Port of Vancouver; CN - 29 and CP - 19.
 - There are currently 743 cars on hand at Vancouver waiting placement for unloading
- Thunder Bay
 - Total of 0 cars reported unloaded by CN and CP in the prior 24 hours.
 - Cars at Thunder Bay waiting placement now at 50

Daily Loads on Wheels - 1/1/2018

	E Canada	Prince Rupert	Thunder Bay	USA/MEX	Vancouver	Total
CN	712	742	492	367	2,965	5,278
CP	506		535	497	3,645	5,183
Short Line	18				33	51
US Rail				309		309
	1,236	742	1,027	1,173	6,643	10,821

Change in Loads on Wheels - Prior 24 Hours

	E Canada	Prince Rupert	Thunder Bay	USA/MEX	Vancouver	Total
CN	0	2	0	0	-11	-9
CP	0		0	-13	-31	-44
Short Line	0				2	2
US Rail				21		21
	0	2	0	8	-40	-30

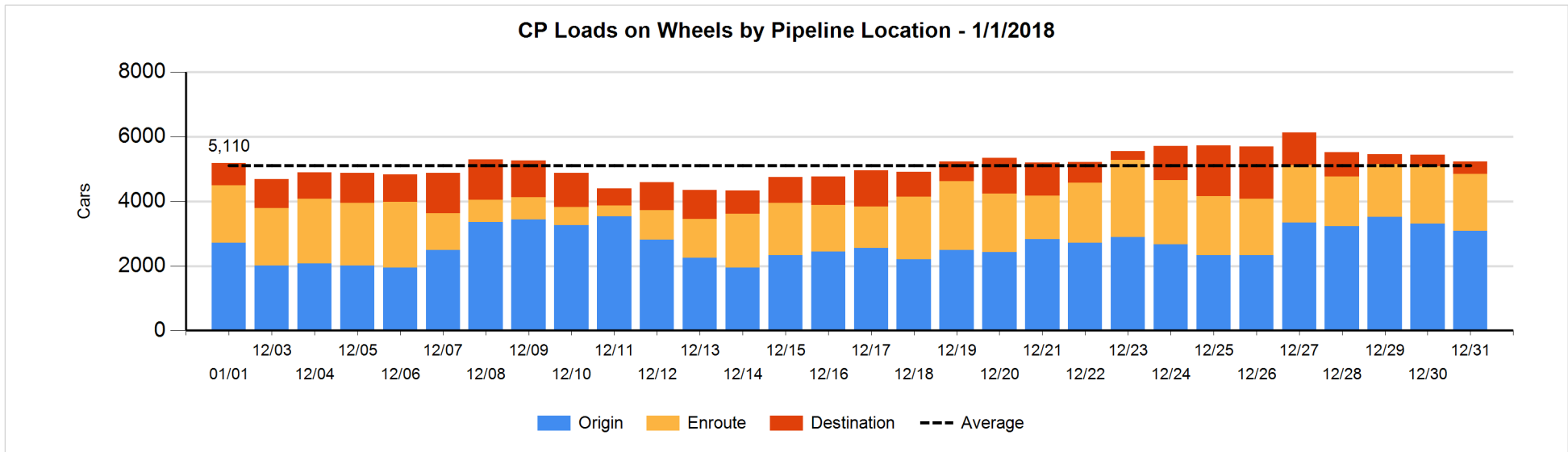
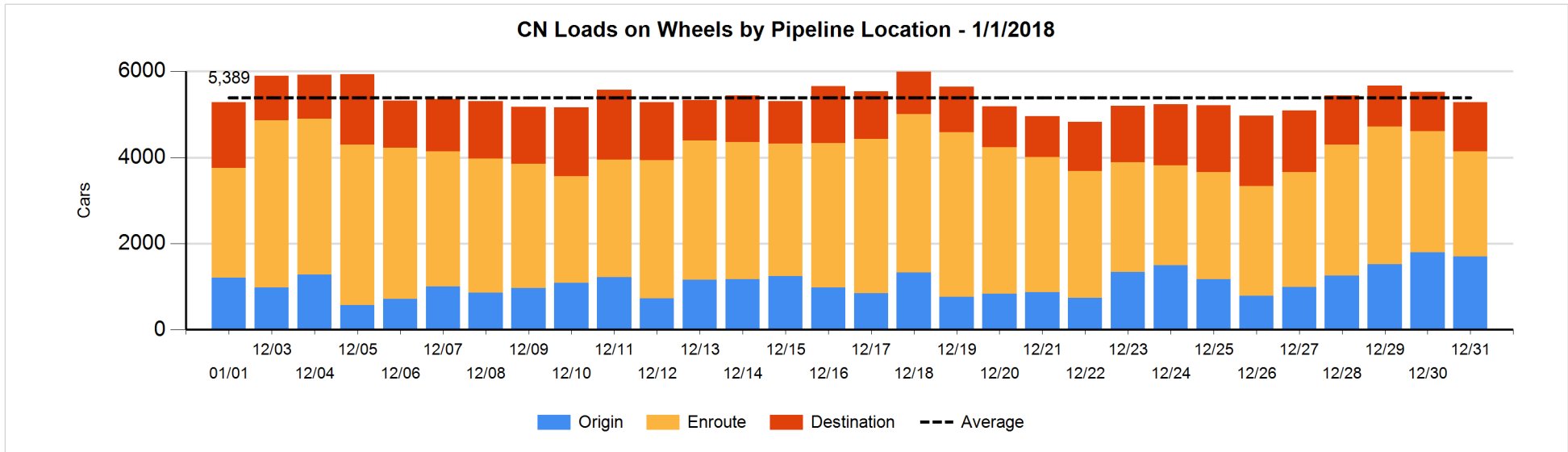


Daily Loads on Wheels By Pipeline Location - 1/1/2018

	E Canada	Prince Rupert	Thunder Bay	USA/MEX	Vancouver	Total
CN						
Origin	43	206		74	880	1,203
Enroute	547	183	410	262	1,151	2,553
Destination	122	353	82	31	934	1,522
	712	742	492	367	2,965	5,278
CP						
Origin	136		161	194	2,226	2,717
Enroute	370		244	273	895	1,782
Destination			130	30	524	684
	506		535	497	3,645	5,183
US Rail / Short Line						
Origin						
Enroute	18			118		136
Destination				191	33	224
	18			309	33	360

Change in Daily Loads on Wheels By Pipeline Location - Prior 24 Hours

	E Canada	Prince Rupert	Thunder Bay	USA/MEX	Vancouver	Total
CN						
Origin	-24	-50	-102	-4	-315	-495
Enroute	-11	-108	102	3	129	115
Destination	35	160	0	1	175	371
	0	2	0	0	-11	-9
CP						
Origin	-43		-110	0	-220	-373
Enroute	43		-1	-13	4	33
Destination			111	0	185	296
	0		0	-13	-31	-44
US Rail / Short Line						
Origin						
Enroute	0			-72		-72
Destination				93	2	95
	0			21	2	23

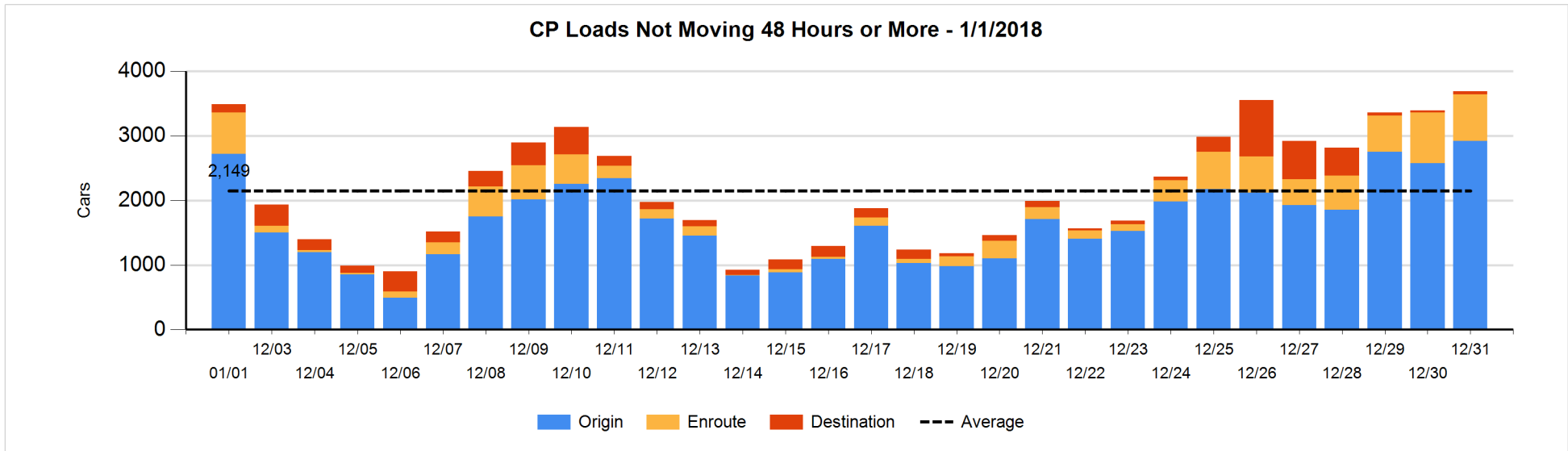
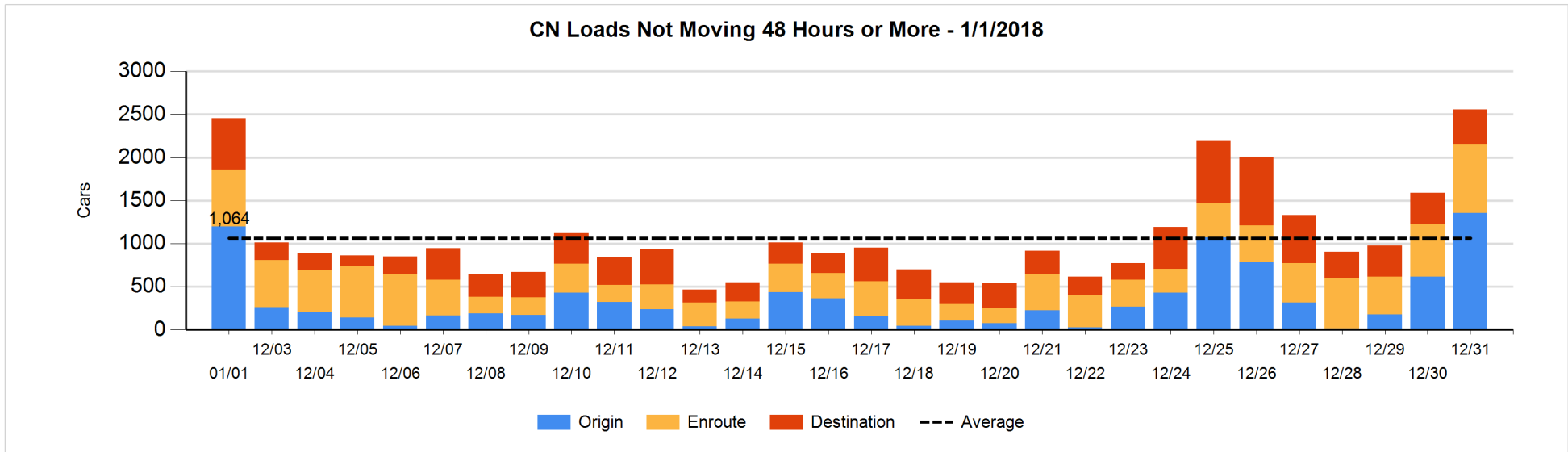


Loads Not Moving 48 Hours or More - 1/1/2018

	E Canada	Prince Rupert	Thunder Bay	USA/MEX	Vancouver	Total
CN						
Origin	43	206		74	873	1196
Enroute	115	11	204	108	223	661
Destination	84	190	14	30	278	596
	242	407	218	212	1374	2453
CP						
Origin	136		161	194	2226	2717
Enroute	181		60	109	294	644
Destination				30	97	127
	317		221	333	2617	3488
US Rail / Short Line						
Origin						
Enroute	2			28		30
Destination				55	26	81
	2			83	26	111

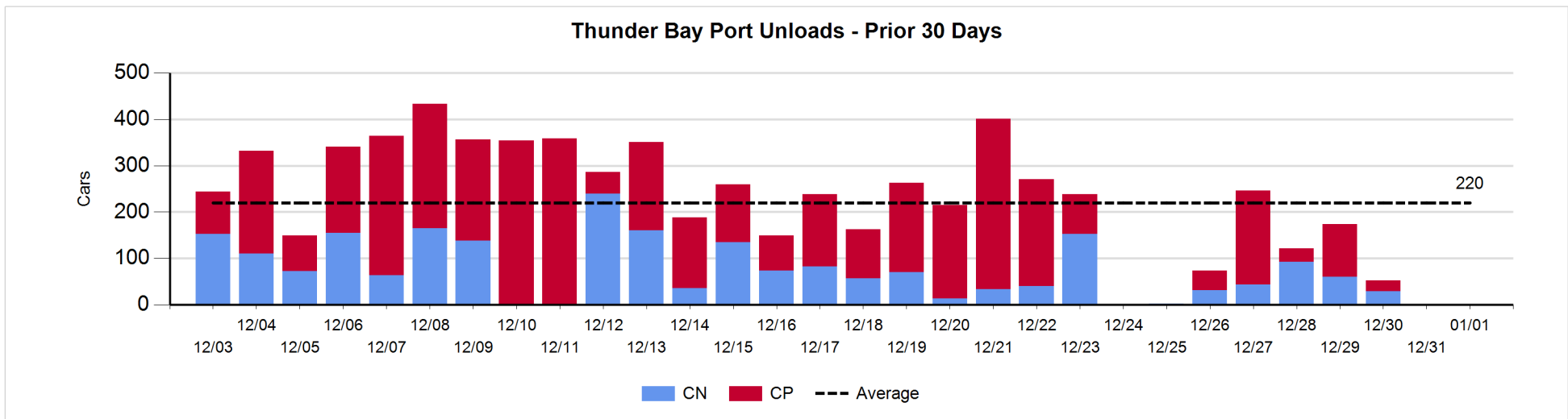
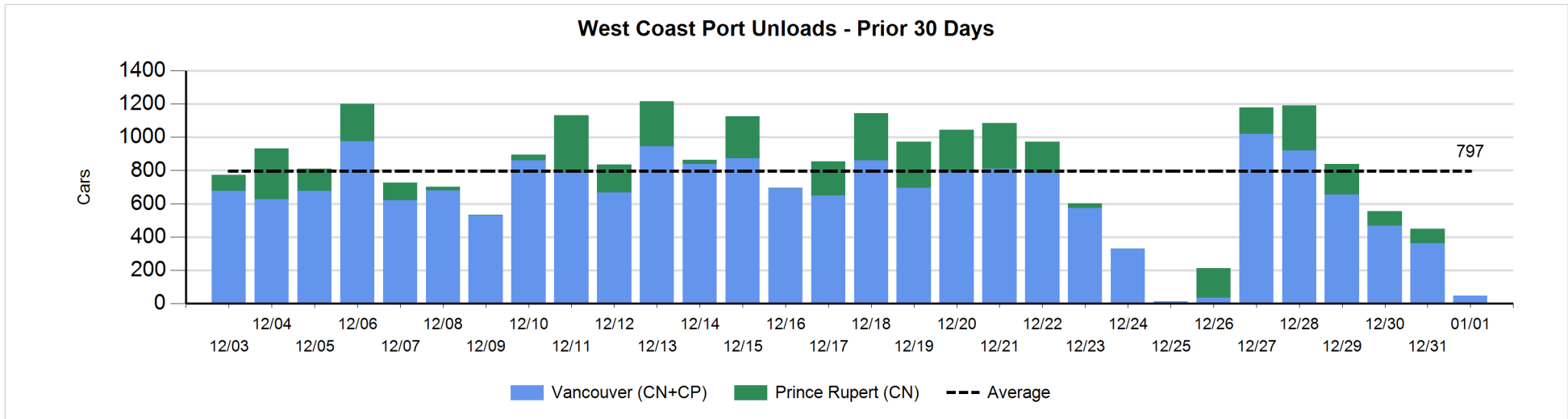
Change in Loads Not Moving 48 Hours or More - 1/1/2018

	E Canada	Prince Rupert	Thunder Bay	USA/MEX	Vancouver	Total
CN						
Origin	-5	52		-4	-200	-157
Enroute	3	-2	-6	-48	-81	-134
Destination	30	146	-23	0	32	185
	28	196	-29	-52	-249	-106
CP						
Origin	-43		-36	0	-122	-201
Enroute	-7		-47	-23	1	-76
Destination				0	74	74
	-50		-83	-23	-47	-203
US Rail / Short Line						
Origin						
Enroute	1			5		6
Destination				8	6	14
	1			13	6	20



Port Unloads - 1/1/2018

	Prince Rupert	Vancouver	West Coast Total	Thunder Bay	Total
CN		29	29		29
CP		19	19		19
		48	48		48



Port Terminal Status

Vancouver

Daily Activity for 1/1/2018

	Cars Arrived	Cars Received in Interchange	Cars Delivered in Interchange	Cars Placed for Unloading	Loads on Wheels at Destination As of 1/1/2018
CN	169	29	25	153	934
CP	216	23	29	104	524
SRY		2			33

Port Unloads

	01/01	12/31	Week To Date	Last Week
CN	29	148	29	1,622
CP	19	215	19	1,850
SRY				27

Age Profile of Loaded Cars Waiting Placement for Unloading

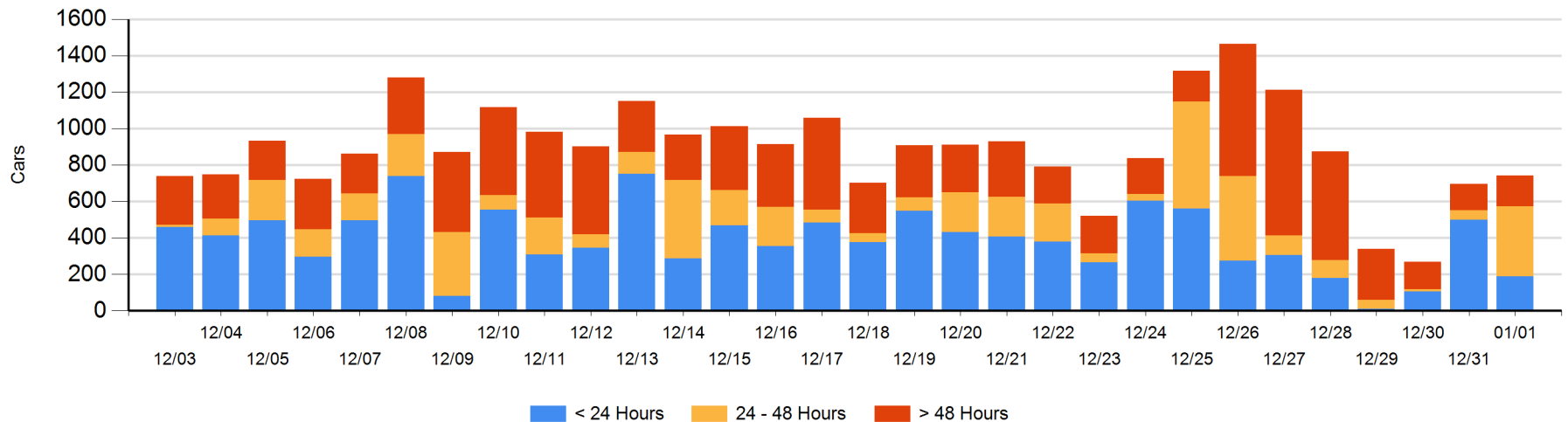
Today

	< 24 Hrs	24 - 48 Hrs	> 48-72 Hrs	> 72 Hrs	Total On Hand
CN	169	89	8	92	358
CP	20	294	45	26	385
SRY					0

Change in Last 24 Hours

	< 24 Hrs	24-48 Hrs	48 - 72 Hrs	> 72 Hrs
CN	-55	81	-5	0
CP	-256	249	45	-8
SRY				-4

Loaded Cars on Hand Vancouver Waiting for Placement - Last 30 Days All Railways



Port Terminal Status

Prince Rupert

Daily Activity for 1/1/2018

	Cars Arrived	Cars Received in Interchange	Cars Delivered in Interchange	Cars Placed for Unloading	Loads on Wheels at Destination As of 1/1/2018
CN	163			163	353

Port Unloads

	01/01	12/31	Week To Date	Last Week
CN		87		964

Age Profile of Loaded Cars Waiting Placement for Unloading

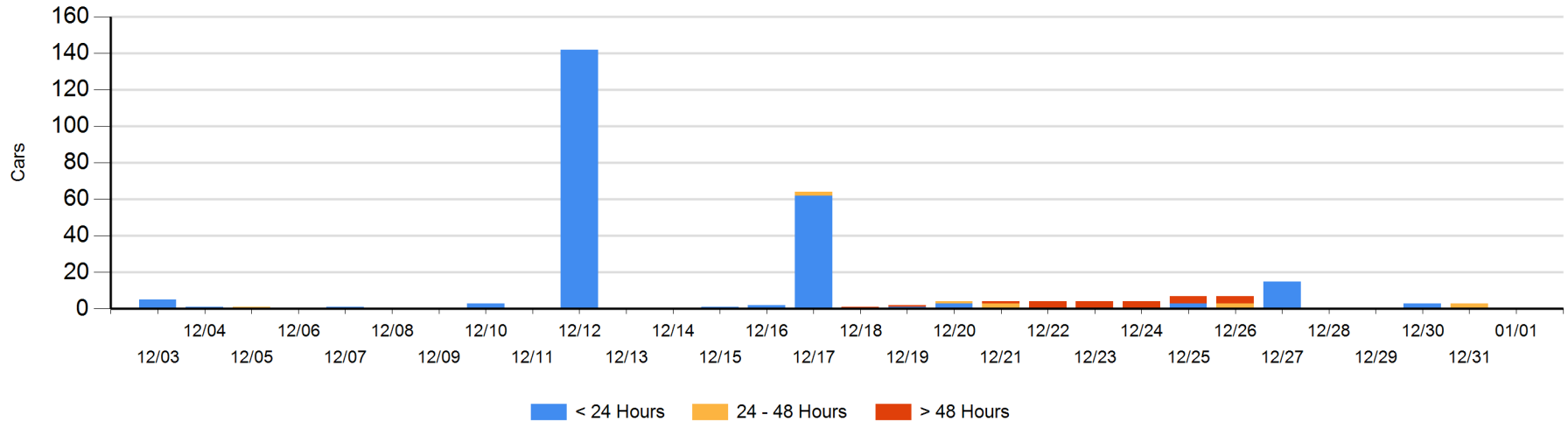
Today

	< 24 Hrs	24 - 48 Hrs	> 48-72 Hrs	> 72 Hrs	Total On Hand
CN					0

Change in Last 24 Hours

	< 24 Hrs	24-48 Hrs	48 - 72 Hrs	> 72 Hrs
CN		-3		

Loaded Cars on Hand Prince Rupert Waiting for Placement - Last 30 Days All Railways



Port Terminal Status

Thunder Bay

Daily Activity for 1/1/2018

	Cars Arrived	Cars Received in Interchange	Cars Delivered in Interchange	Cars Placed for Unloading	Loads on Wheels at Destination As of 1/1/2018
CN					82
CP	111			87	130

Port Unloads

	01/01	12/31	Week To Date	Last Week
CN				259
CP				411

Age Profile of Loaded Cars Waiting Placement for Unloading

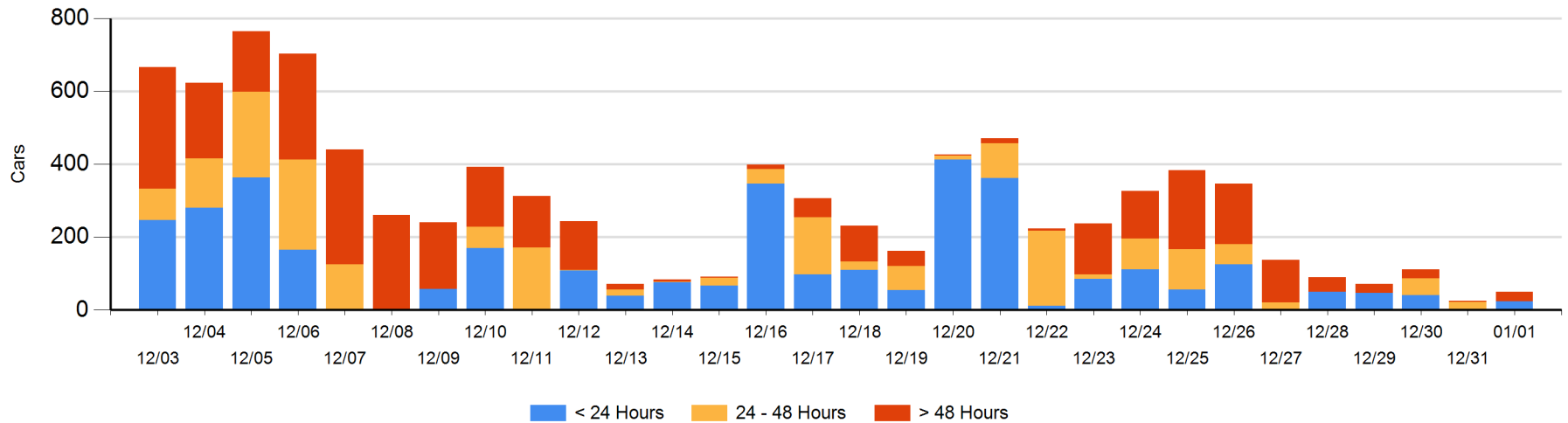
Today

	< 24 Hrs	24 - 48 Hrs	> 48-72 Hrs	> 72 Hrs	Total On Hand
CN			22	4	26
CP	24				24

Change in Last 24 Hours

	< 24 Hrs	24-48 Hrs	48 - 72 Hrs	> 72 Hrs
CN		-22	18	4
CP	24			

Loaded Cars on Hand Thunder Bay Waiting for Placement - Last 30 Days All Railways



Measurement Definitions

Loads on Wheels	<p>Count of loaded rail cars including all rail cars that have been released loaded at origin and have not been reported by the railway as unloaded at destination.</p> <p>Counts include all rail cars (hopper cars and boxcars) moving within a pipeline.</p>
Loads Not Moving	<p>Loaded rail cars for which the railways have not reported a movement event for 48 hours or more whether the rail car is at origin, enroute or at destination.</p>
Port Unloads	<p>Count of rail cars reported by railways as unloaded at the western port destinations of Vancouver, Prince Rupert and Thunder Bay.</p> <p>Unload counts include all rail cars (hopper cars and boxcars) unloaded by all receivers including major port terminals, transloaders and other receivers.</p>
Cars Arrived	<p>Count of rail cars reported as arrived at the destination railway terminal.</p>
Cars Received in Interchange	<p>Count of rail cars received in interchange by each railway within a destination railway terminal. Interchange activity is tracked for the Vancouver and Thunder Bay pipelines as applicable.</p>
Cars Delivered in Interchange	<p>Count of rail cars delivered in interchange by each railway within a destination railway terminal. Interchange activity is tracked for the Vancouver and Thunder Bay pipelines as applicable.</p>
Cars Placed for Unloading	<p>Count of rail cars reported by the railways as placed loaded at the receiver's facility for unloading.</p>
Loads on Wheels at Destination	<p>Count of rail cars that remain under load within the destination railway terminal including rail cars that have been reported as placed for unloading but not yet reported as unloaded.</p>
Waiting Placement for Unloading	<p>Count of rail cars that have been reported as arrived at the destination railway terminal but not reported as placed for unloading by the railway.</p> <p>For the Ports of Vancouver, Prince Rupert and Thunder Bay the count of rail cars waiting placement for unloading is categorized by age – i.e. the elapsed time from arrival at destination to the current report date.</p>