

### **Note to Reader**

Prince Rupert unloads continue to be lower than normal due to ongoing maintenance at the terminal, resulting in reduced unload capacity. While Prince Rupert unloads have averaged 710 per week over the course of the last four weeks, they have reported unloads above the 900-car mark for the two consecutive weeks prior to Week 48. This is consistent with an increase in hopper car orders in this corridor which have risen above 1,000 cars in week 48 and 49 for the third time in the last seven weeks. During Week 48, Prince Rupert unloads fell to less than 600. Alliance Grain Terminal in Vancouver has now begun planned maintenance which is expected to continue until mid-August.

### **SPEED READ**

- Loads on wheels increased overnight, marking an increase in CN volumes offset by lower CP volumes. On a net basis, the net increase in volume indicates higher destined traffic in all corridors other than Prince Rupert.
- Network fluidity improved overnight, led by a decline in idle car counts from both CN and CP by 38% and 32%, respectively. The total count of cars for 4+ days from both major railways decreased for the fourth consecutive day - now at 553 cars.
- Two days in Week 49 unloads now ahead of prior week's performance by more than 100 unloads, reflecting an improvement in week over week performance at Prince Rupert and Thunder Bay offset by reduced unloads at Vancouver.

=====

### **Loads on Wheels**

- Loads on wheels rose 2% (+168) overnight. The increase displays greater traffic levels on CN offset by lower traffic levels on CP - now at 8,516 and 1% above the trailing 30-day average.
- On a net basis, the increase in loads on wheels shows higher traffic levels in all corridors other than Prince Rupert.
- CN volumes rose 6% (+254) overnight with greater volumes in the Vancouver and E Canada corridors offset by lower traffic in the USA/MEX, Thunder Bay and Prince Rupert corridors. System wide CN loads on wheels - now at 4,456 and 9% above the trailing 30-day average.
- CP volumes decreased for the third consecutive day, down 3% (-128) overnight, driven by a drop in the Vancouver corridors offset by an uptick in the Thunder Bay corridor. CP system wide loads on wheels - now at 3,641 and 10% below the trailing 30-day average.
- Vancouver currently at 4,386, up 3% overnight and 11% below the trailing 30-day average.
- The Prince Rupert pipeline now sits at 1,147, declined marginally by 1% overnight, 25% above the trailing 30-day average and above the 1,000-car threshold for the fourth consecutive day.
- Thunder Bay volumes rose marginally by 2% overnight and have now increased for four consecutive days - now at 1,801, the highest seen in the last 30 days, and 45% above the trailing 30-day average with 78% of traffic moving on CP.

### **Hopper Car Rationing**

- No hopper car rationing was reported for either CN or CP in week 48 and none expected in week 49.

### **Loads Not Moving**

- **The count of cars not moving for 48+ hours decreased significantly by 35% (-774) overnight, marking lower counts from both major railways. Idle car counts currently at 1,467.**
- CN
  - **The count of idle cars down significantly by 38% (-392) overnight - idle car counts now at 652.**

- The number of cars idle for 4+ days increased significantly by 25% overnight - now sits at 314 cars.
- The count of cars not moving for 7+ days rose marginally by 1% overnight - currently sits at 161 cars.
- Vancouver represents 31% of all idle cars.
- In total 42% of all idle cars are dwelling at origin locations.
- CP
  - **CP counts dropped significantly by 32% (-382) overnight - idle car counts currently sits at 815.**
  - The number of cars idle for 4+ days dropped significantly by 36% overnight and have now declined for the second consecutive day - currently sits at 239 cars.
  - The number of cars idle for 7+ days decreased for the third consecutive day, down significantly by 92% overnight - currently sits at 12 cars.
  - Vancouver accounts for 60% of all idle cars.
  - In total 78% of all idle cars are dwelling at origin locations.

### **Port Performance**

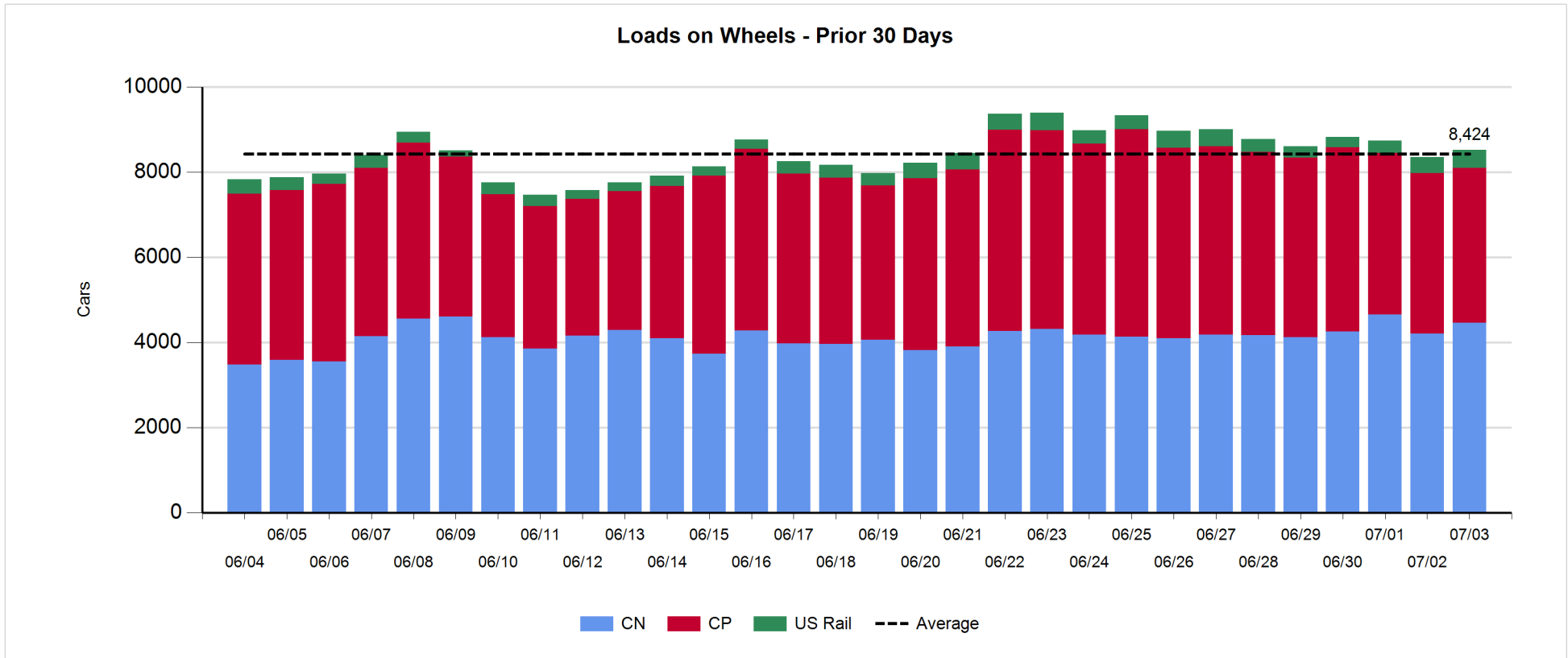
- CN and CP reported a total of 1,145 cars unloaded at the three western ports, above the 1,000-car threshold for the second consecutive day. Two days in Week 49 unloads are tracking ahead of last week's pace by more than 100 unloads, reflecting increased unloads at Prince Rupert and Thunder Bay offset by lower unloads at Vancouver.
- Vancouver
  - 764 unloads reported by CN and CP at the Port of Vancouver; CN - 449 and CP - 315.
  - There are fewer than 950 cars on site with about 450 cars arriving at the port in the last 24 hours.
  - CN and CP have about 750 cars enroute to Vancouver, west of Alberta, with nearly 500 Kamloops and west and 56% of traffic currently moving on CP.
- Prince Rupert
  - Prince Rupert reported 117 unloads, above the 100-car threshold and now ahead last week's unloads after two days by about 150.
  - Loads on wheels now above 1,100 cars.
  - There are less than 300 cars west of Jasper – predominantly Prince George and west.
  - There are currently more than 200 cars on site with 125 cars arriving at the port in the last 24 hours. Given the structure of the pipeline, there appears sufficient cars available to support unloads for the rest of the week.
- Thunder Bay
  - 264 unloads reported at Thunder Bay yesterday. Two days in Week 49 unloads are tracking ahead of last week's pace by 10 unloads.
  - There are about 500 cars on site at Thunder Bay with nearly 350 cars arriving at the port in the prior 24 hours.
  - There are around 250 cars enroute to Thunder Bay from Winnipeg and east. Cars on hand and those enroute should support unloads for another day or two.

**Daily Loads on Wheels - 7/3/2018**

	E Canada	Prince Rupert	Thunder Bay	USA/MEX	Vancouver	Total
CN	362	1,147	400	180	2,367	4,456
CP	12		1,401	284	1,944	3,641
Short Line	16				75	91
US Rail				328		328
	390	1,147	1,801	792	4,386	8,516

**Change in Loads on Wheels - Prior 24 Hours**

	E Canada	Prince Rupert	Thunder Bay	USA/MEX	Vancouver	Total
CN	38	-13	-15	-27	271	254
CP	-6		49	4	-175	-128
Short Line	-17				21	4
US Rail				38		38
	15	-13	34	15	117	168

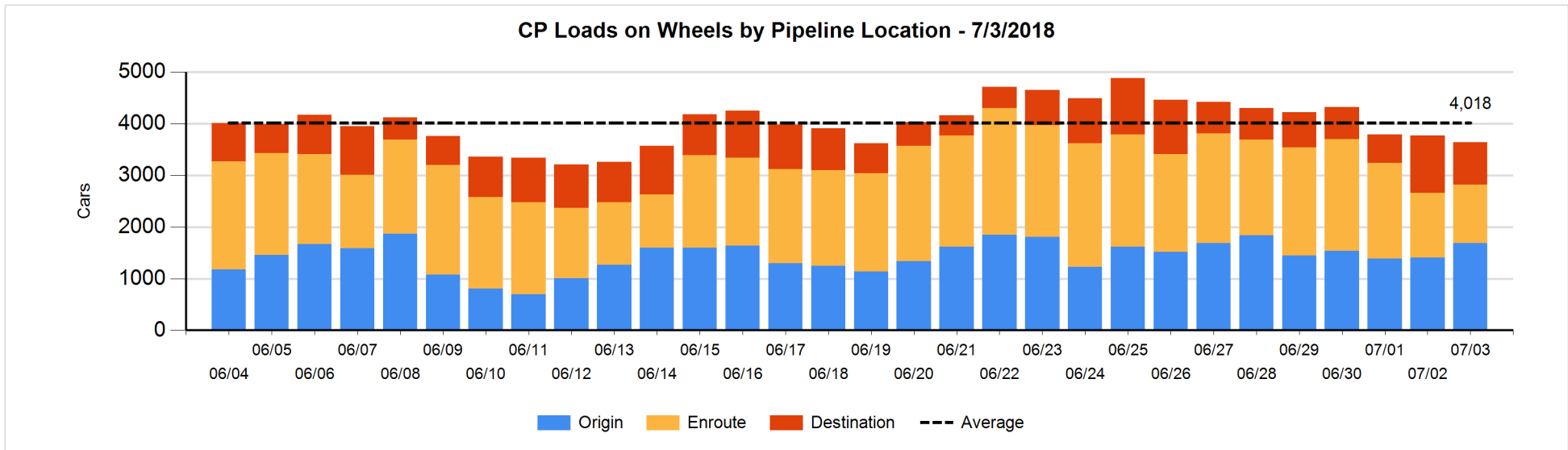
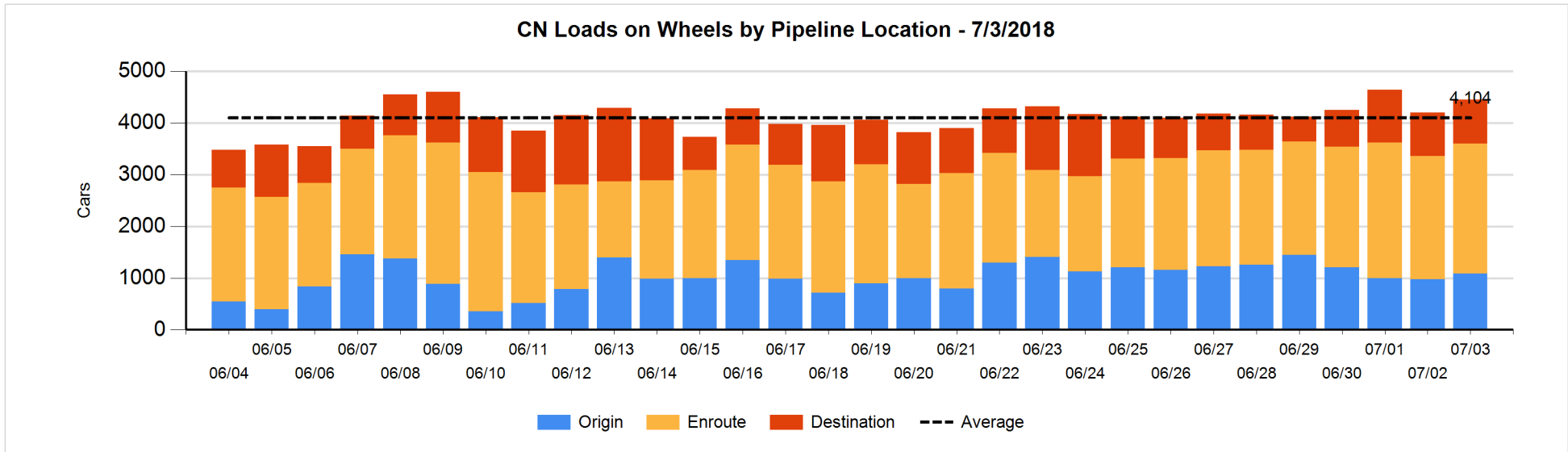


**Daily Loads on Wheels By Pipeline Location - 7/3/2018**

	E Canada	Prince Rupert	Thunder Bay	USA/MEX	Vancouver	Total
CN						
Origin	73	202	4	52	754	1,085
Enroute	216	733	287	120	1,163	2,519
Destination	73	212	109	8	450	852
	362	1,147	400	180	2,367	4,456
CP						
Origin	2		684	97	900	1,683
Enroute	8		324	155	646	1,133
Destination	2		393	32	398	825
	12		1,401	284	1,944	3,641
US Rail / Short Line						
Origin						
Enroute	6			264		270
Destination	10			64	75	149
	16			328	75	419

**Change in Daily Loads on Wheels By Pipeline Location - Prior 24 Hours**

	E Canada	Prince Rupert	Thunder Bay	USA/MEX	Vancouver	Total
CN						
Origin	10	-301	-93	16	474	106
Enroute	22	240	-6	-39	-76	141
Destination	6	48	84	-4	-127	7
	38	-13	-15	-27	271	254
CP						
Origin	2		290	92	-107	277
Enroute	-9		-223	-38	146	-124
Destination	1		-18	-50	-214	-281
	-6		49	4	-175	-128
US Rail / Short Line						
Origin	-3					-3
Enroute	0			50		50
Destination	-14			-12	21	-5
	-17			38	21	42

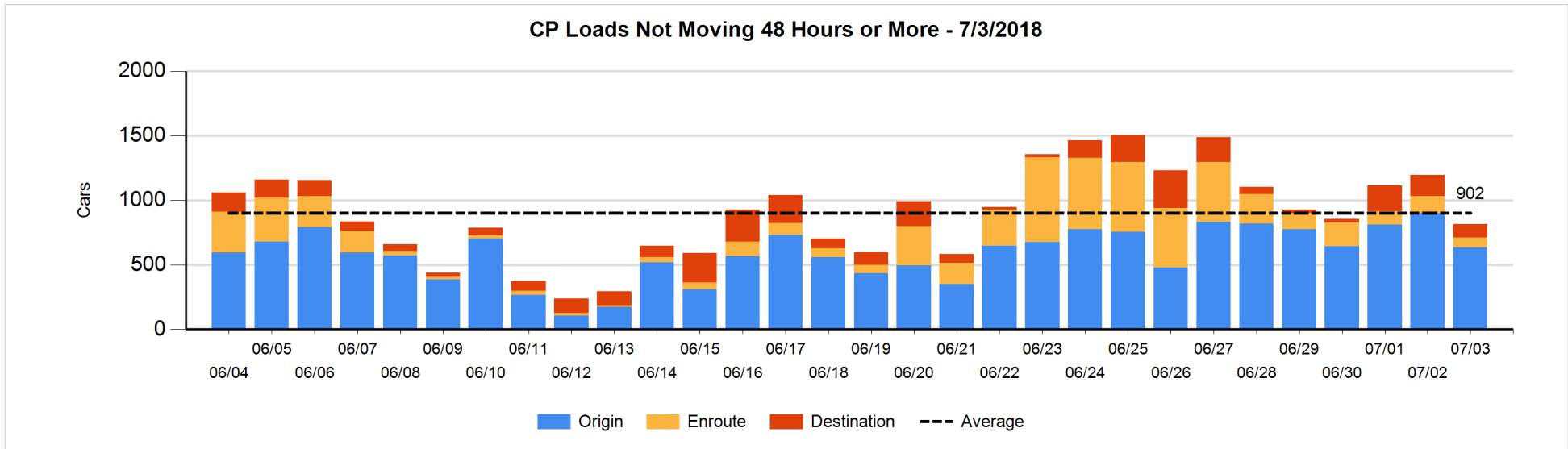
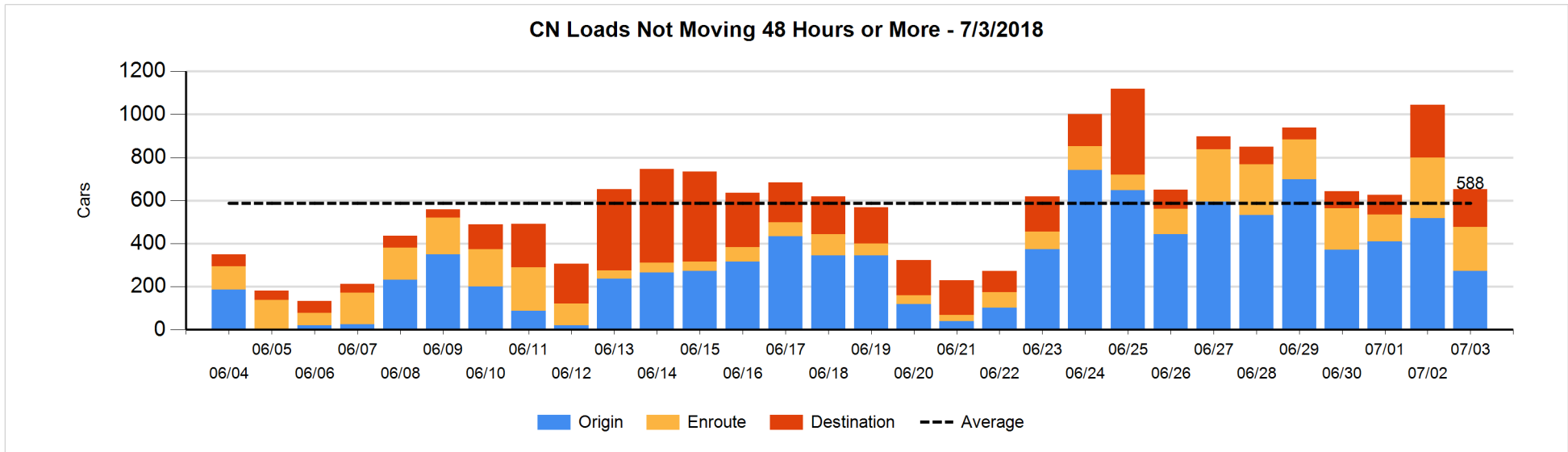


**Loads Not Moving 48 Hours or More - 7/3/2018**

	E Canada	Prince Rupert	Thunder Bay	USA/MEX	Vancouver	Total
<b>CN</b>						
Origin	25	103		36	109	273
Enroute	50	96		6	53	205
Destination	41	87	4		42	174
	116	286	4	42	204	652
<b>CP</b>						
Origin			229	1	405	635
Enroute	1		4	48	23	76
Destination	1		18	22	63	104
	2		251	71	491	815
<b>US Rail / Short Line</b>						
Origin						
Enroute	3			50		53
Destination	2			34	41	77
	5			84	41	130

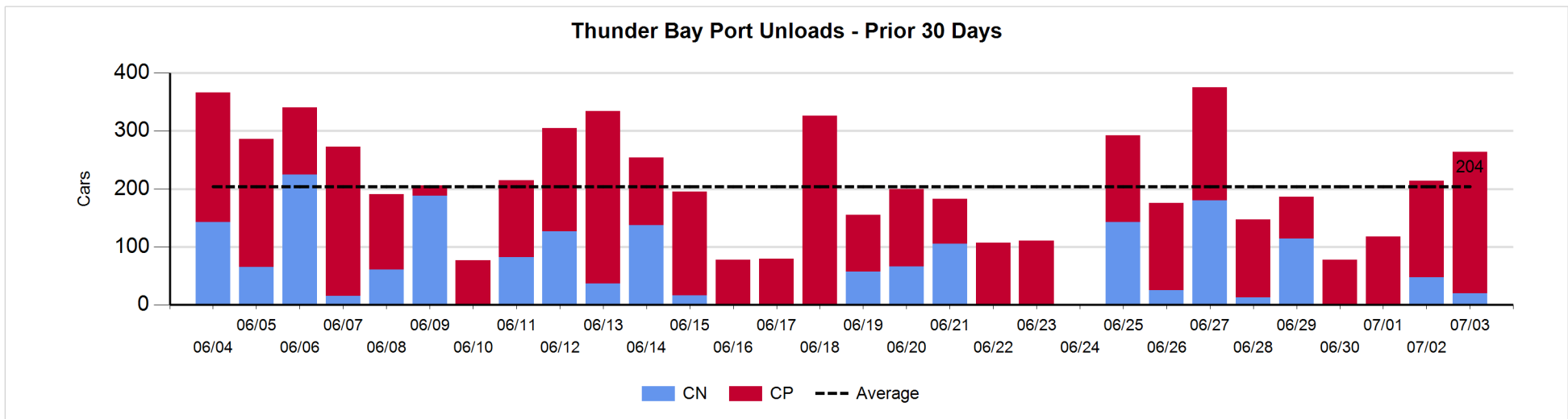
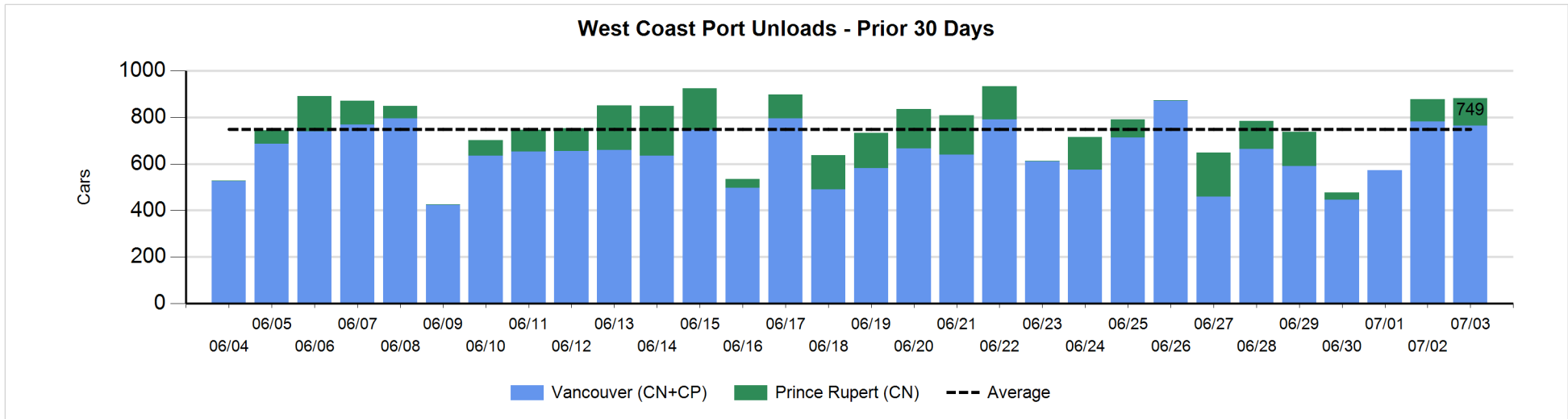
**Change in Loads Not Moving 48 Hours or More - 7/3/2018**

	E Canada	Prince Rupert	Thunder Bay	USA/MEX	Vancouver	Total
<b>CN</b>						
Origin	-37	-208		0	-1	-246
Enroute	-41	-35		-2	2	-76
Destination	-3	-13	-12	-1	-41	-70
	-81	-256	-12	-3	-40	-392
<b>CP</b>						
Origin			11	-4	-270	-263
Enroute	-9		-5	-29	-13	-56
Destination	1		-100	20	16	-63
	-8		-94	-13	-267	-382
<b>US Rail / Short Line</b>						
Origin	-3					-3
Enroute	-1			25		24
Destination	-22			-9	12	-19
	-26			16	12	2



**Port Unloads - 7/3/2018**

	Prince Rupert	Vancouver	West Coast Total	Thunder Bay	Total
CN	117	449	566	20	586
CP		315	315	244	559
	117	764	881	264	1,145





**Port Terminal Status**

**Vancouver**

Daily Activity for 7/3/2018

	Cars Arrived	Cars Received in Interchange	Cars Delivered in Interchange	Cars Placed for Unloading	Loads on Wheels at Destination As of 7/3/2018
CN	81	292	153	432	450
CP	371	124	296	313	398
SRY		33		6	75

**Port Unloads**

	07/03	07/02	Week To Date	Last Week
CN	449	521	970	2,156
CP	315	261	576	2,158
SRY	10	7	17	44

**Age Profile of Loaded Cars Waiting Placement for Unloading**

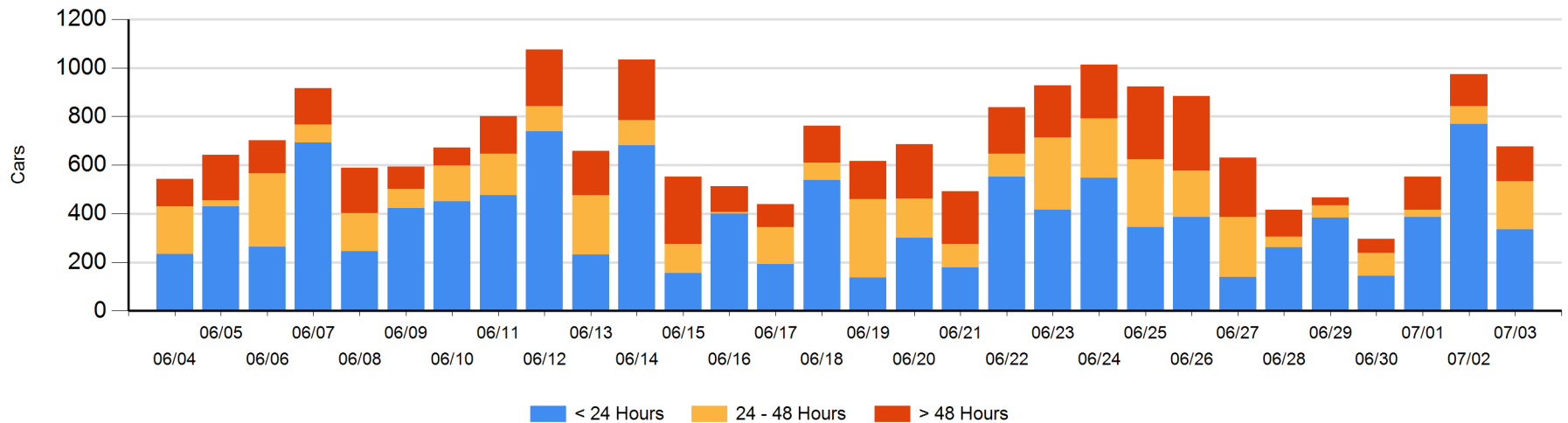
**Today**

	< 24 Hrs	24 - 48 Hrs	> 48-72 Hrs	> 72 Hrs	Total On Hand
CN	81	135	3	8	227
CP	254	63	52	60	429
SRY				20	20

**Change in Last 24 Hours**

	< 24 Hrs	24-48 Hrs	48 - 72 Hrs	> 72 Hrs
CN	-303	131	-1	1
CP	-131	-7	46	-33
SRY			-14	12

**Loaded Cars on Hand Vancouver Waiting for Placement - Last 30 Days All Railways**



**Port Terminal Status**

**Prince Rupert**

**Daily Activity for 7/3/2018**

	Cars Arrived	Cars Received in Interchange	Cars Delivered in Interchange	Cars Placed for Unloading	Loads on Wheels at Destination As of 7/3/2018
CN	125			174	212

**Port Unloads**

	07/03	07/02	Week To Date	Last Week
CN	117	95	212	568

**Age Profile of Loaded Cars Waiting Placement for Unloading**

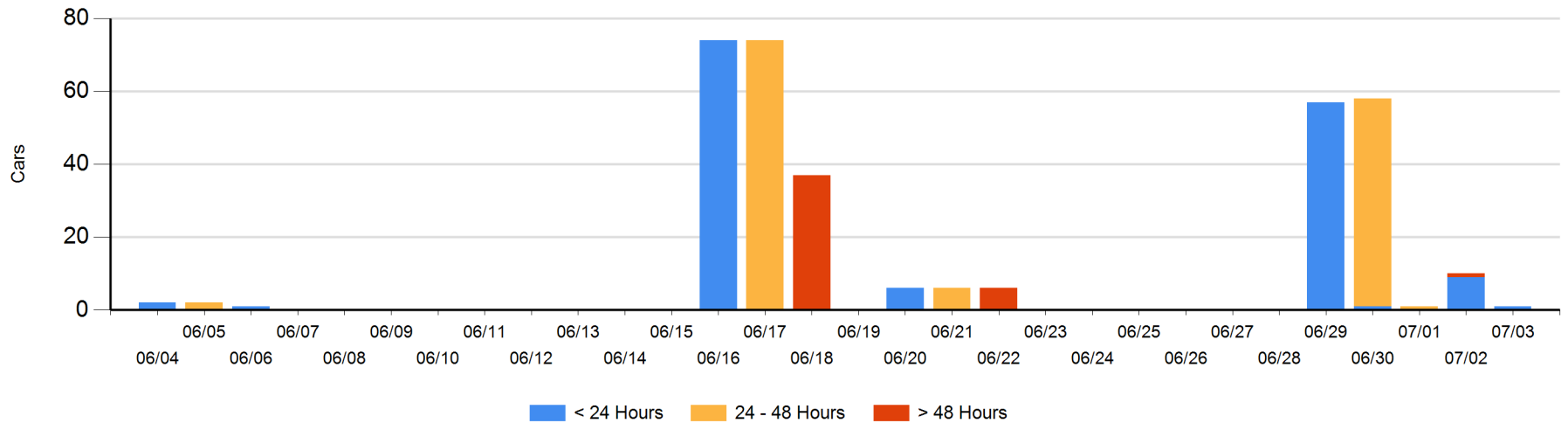
**Today**

	< 24 Hrs	24 - 48 Hrs	> 48-72 Hrs	> 72 Hrs	Total On Hand
CN	1				1

**Change in Last 24 Hours**

	< 24 Hrs	24-48 Hrs	48 - 72 Hrs	> 72 Hrs
CN	-8		-1	

**Loaded Cars on Hand Prince Rupert Waiting for Placement - Last 30 Days All Railways**



**Port Terminal Status**

**Thunder Bay**

Daily Activity for 7/3/2018

	Cars Arrived	Cars Received in Interchange	Cars Delivered in Interchange	Cars Placed for Unloading	Loads on Wheels at Destination As of 7/3/2018
CN	104			98	109
CP	227			214	393

**Port Unloads**

	07/03	07/02	Week To Date	Last Week
CN	20	47	67	475
CP	244	167	411	897

**Age Profile of Loaded Cars Waiting Placement for Unloading**

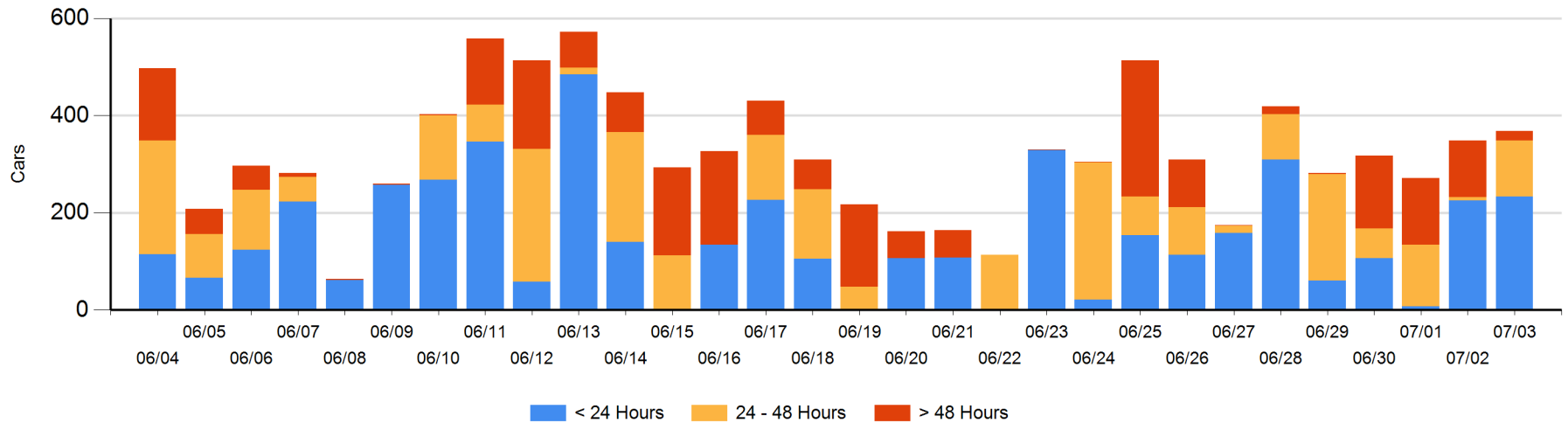
**Today**

	< 24 Hrs	24 - 48 Hrs	> 48-72 Hrs	> 72 Hrs	Total On Hand
CN	6			1	7
CP	227	116		18	361

**Change in Last 24 Hours**

	< 24 Hrs	24-48 Hrs	48 - 72 Hrs	> 72 Hrs
CN	6		-1	1
CP	2	109	-57	-41

Loaded Cars on Hand Thunder Bay Waiting for Placement - Last 30 Days All Railways



## Measurement Definitions

Loads on Wheels	<p>Count of loaded rail cars including all rail cars that have been released loaded at origin and have not been reported by the railway as unloaded at destination.</p> <p>Counts include all rail cars (hopper cars and boxcars) moving within a pipeline.</p>
Loads Not Moving	<p>Loaded rail cars for which the railways have not reported a movement event for 48 hours or more whether the rail car is at origin, enroute or at destination.</p>
Port Unloads	<p>Count of rail cars reported by railways as unloaded at the western port destinations of Vancouver, Prince Rupert and Thunder Bay.</p> <p>Unload counts include all rail cars (hopper cars and boxcars) unloaded by all receivers including major port terminals, transloaders and other receivers.</p>
Cars Arrived	<p>Count of rail cars reported as arrived at the destination railway terminal.</p>
Cars Received in Interchange	<p>Count of rail cars received in interchange by each railway within a destination railway terminal. Interchange activity is tracked for the Vancouver and Thunder Bay pipelines as applicable.</p>
Cars Delivered in Interchange	<p>Count of rail cars delivered in interchange by each railway within a destination railway terminal. Interchange activity is tracked for the Vancouver and Thunder Bay pipelines as applicable.</p>
Cars Placed for Unloading	<p>Count of rail cars reported by the railways as placed loaded at the receiver's facility for unloading.</p>
Loads on Wheels at Destination	<p>Count of rail cars that remain under load within the destination railway terminal including rail cars that have been reported as placed for unloading but not yet reported as unloaded.</p>
Waiting Placement for Unloading	<p>Count of rail cars that have been reported as arrived at the destination railway terminal but not reported as placed for unloading by the railway.</p> <p>For the Ports of Vancouver, Prince Rupert and Thunder Bay the count of rail cars waiting placement for unloading is categorized by age – i.e. the elapsed time from arrival at destination to the current report date.</p>