

Note to Reader

Prince Rupert unloads continue to be lower than normal due to ongoing maintenance at the terminal, resulting in reduced unload capacity. While Prince Rupert unloads have averaged 710 per week over the course of the last four weeks, they have reported unloads above the 900-car mark for the two consecutive weeks prior to Week 48. This is consistent with an increase in hopper car orders in this corridor which have risen above 1,000 cars in week 48 and 49 for the third time in the last seven weeks. During Week 48, Prince Rupert unloads fell to less than 600. Alliance Grain Terminal in Vancouver has now begun planned maintenance which is expected to continue until mid-August.

SPEED READ

- Loads on wheels declined overnight, indicating a decline in both CN and CP volumes. On a net basis, volumes declined due to reduced levels in the Vancouver, Prince Rupert and E Canada corridors offset by increased volumes in the USA/MEX and Thunder Bay corridors.
- Network fluidity improved overnight for the second consecutive day, led by lower CP counts, down 15% overnight, offset by higher CN counts, up 10% overnight. The total count of cars for 4+ days from both major railways increased significantly by 58% overnight - currently at 902 cars.
- Three days in Week 49 unloads now ahead of prior week's performance by fewer than 100 unloads, reflecting improved week over week performance at Vancouver and Prince Rupert offset by reduced unloads at Thunder Bay.

=====

Loads on Wheels

- Loads on wheels declined 4% (-328) overnight. The drop reflects reduced traffic levels on both CN and CP - now sits at 8,209 and 3% below the trailing 30-day average.
- On a net basis, the fall in loads on wheels indicates reduced traffic levels in the Vancouver, Prince Rupert and E Canada corridors offset by higher volumes in the USA/MEX and Thunder Bay corridors.
- CN volumes decreased 3% (-126) overnight with lower volumes across all corridors other than USA/MEX. System wide CN loads on wheels now sits at 4,332 and 5% above the trailing 30-day average.
- CP volumes decreased 4% (-163) overnight and have now declined for the fourth consecutive day, driven by a large decline in the Vancouver corridor offset by increased traffic in the USA/MEX and Thunder Bay corridors. CP system wide loads on wheels currently at 3,497 and 13% below the trailing 30-day average.
- Vancouver currently sits at 4,001, the lowest seen in the last 30 days, decreased 9% overnight and 19% below the trailing 30-day average.
- The Prince Rupert pipeline currently at 1,082, decreased for two consecutive days, down 6% overnight and 16% above the trailing 30-day average and above the 1,000-car threshold for the fifth consecutive day.
- Thunder Bay volumes gained 5% overnight and have now increased for the fifth consecutive day - currently at 1,885, the highest seen in the last 30 days, and 49% above the trailing 30-day average with 79% of traffic moving on CP.

Hopper Car Rationing

- No hopper car rationing was reported for either CN or CP in week 48 and none expected in week 49.

Loads Not Moving

- **The count of cars not moving for 48+ hours decreased for the second consecutive day, dropped 4% (-59) overnight, showing lower car counts from CP offset by higher car counts from CN. Idle car counts currently sits at 1,428.**

- CN
 - **The count of idle cars gained 10% (+67) overnight - idle car counts now sits at 720.**
 - The number of cars idle for 4+ days increased for two consecutive days, up significantly by 34% overnight - now at 421 cars.
 - The count of cars not moving for 7+ days decreased significantly by 33% overnight - currently at 108 cars.
 - Vancouver represents 49% of all idle cars.
 - In total 40% of all idle cars are dwelling at origin locations.
- CP
 - **CP counts decreased significantly by 15% (-126) overnight and have now declined for the second consecutive day - idle car counts now sits at 708.**
 - The number of cars idle for 4+ days increased significantly by 87% overnight - currently at 481 cars.
 - The number of cars idle for 7+ days gained significantly by 67% overnight - now at 20 cars.
 - Vancouver accounts for 62% of all idle cars.
 - In total 73% of all idle cars are dwelling at origin locations.

Port Performance

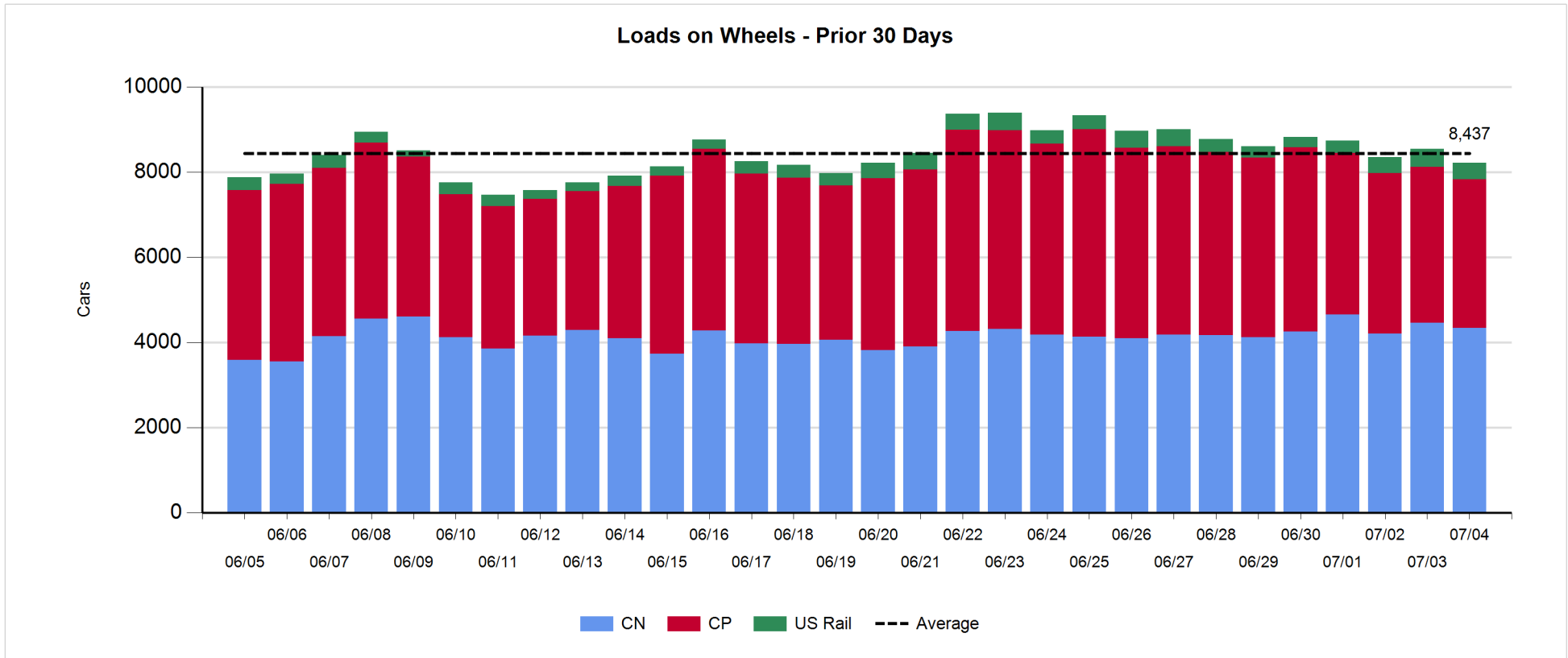
- CN and CP reported a total of 994 cars unloaded at the three western ports, below the 1,000-car threshold. Three days in Week 49 unloads are tracking ahead of last week's pace by fewer than 100 unloads, showing increased unloads at Vancouver and Prince Rupert offset by lower unloads at Thunder Bay.
- Vancouver
 - 656 unloads reported by CN and CP at the Port of Vancouver; CN - 369 and CP - 287.
 - There are about 1,000 cars on site at Vancouver with nearly 800 cars arriving at the port in the last 24 hours.
 - CN and CP have about 350 cars enroute to Vancouver, west of Alberta, with 300 Kamloops and west and 16% of traffic currently moving on CP.
- Prince Rupert
 - Prince Rupert reported 164 unloads, above the 100-car threshold for two consecutive days, and now ahead last week's unloads after three days by more than 100.
 - Loads on wheels now above 1,000 cars.
 - There are fewer than 250 cars west of Jasper - mostly Prince George and west.
 - There are currently more than 100 cars on site with 90 cars arriving at the port in the last 24 hours. Given the structure of the pipeline, there appears to be sufficient cars available to support unloads for the remainder of the week.
- Thunder Bay
 - 174 unloads reported at Thunder Bay yesterday. Three days in Week 49 unloads are tracking behind last week's pace by nearly 200 unloads.
 - There are about 550 cars on site at Thunder Bay with less than 250 cars arriving at the port in the prior 24 hours.
 - There are fewer than 200 cars enroute to Thunder Bay from Winnipeg and east. Cars on hand and those enroute should support unloads for the balance of the week.

Daily Loads on Wheels - 7/4/2018

	E Canada	Prince Rupert	Thunder Bay	USA/MEX	Vancouver	Total
CN	338	1,082	390	189	2,333	4,332
CP	17		1,495	380	1,605	3,497
Short Line	5				63	68
US Rail				312		312
	360	1,082	1,885	881	4,001	8,209

Change in Loads on Wheels - Prior 24 Hours

	E Canada	Prince Rupert	Thunder Bay	USA/MEX	Vancouver	Total
CN	-24	-65	-10	9	-36	-126
CP	5		94	96	-358	-163
Short Line	-11				-12	-23
US Rail				-16		-16
	-30	-65	84	89	-406	-328



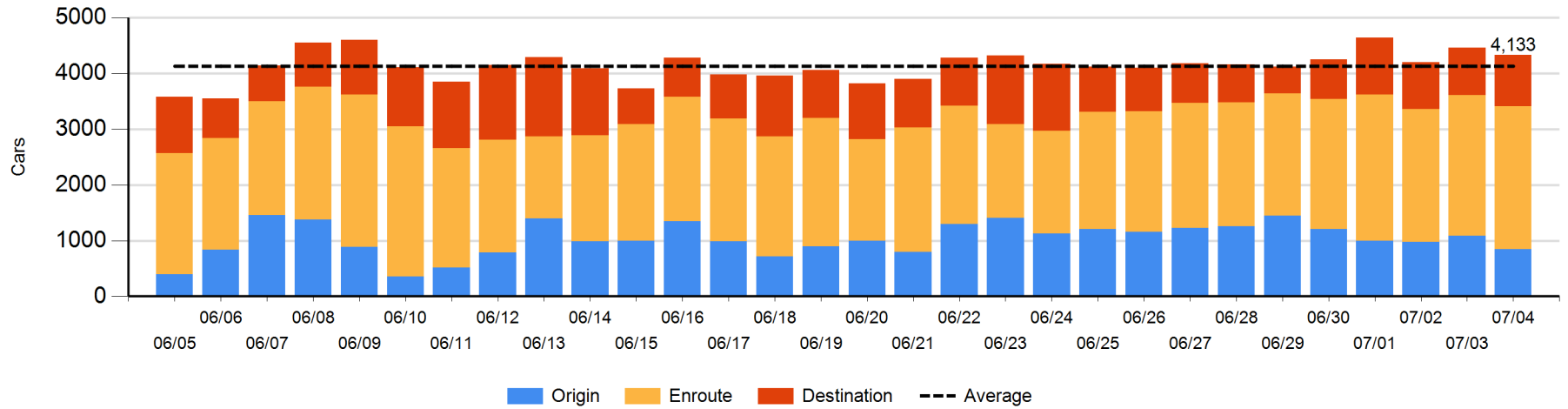
Daily Loads on Wheels By Pipeline Location - 7/4/2018

	E Canada	Prince Rupert	Thunder Bay	USA/MEX	Vancouver	Total
CN						
Origin	25	200	50	5	569	849
Enroute	259	771	189	171	1,173	2,563
Destination	54	111	151	13	591	920
	338	1,082	390	189	2,333	4,332
CP						
Origin	8		549	178	717	1,452
Enroute	8		543	154	499	1,204
Destination	1		403	48	389	841
	17		1,495	380	1,605	3,497
US Rail / Short Line						
Origin						
Enroute				258		258
Destination	5			54	63	122
	5			312	63	380

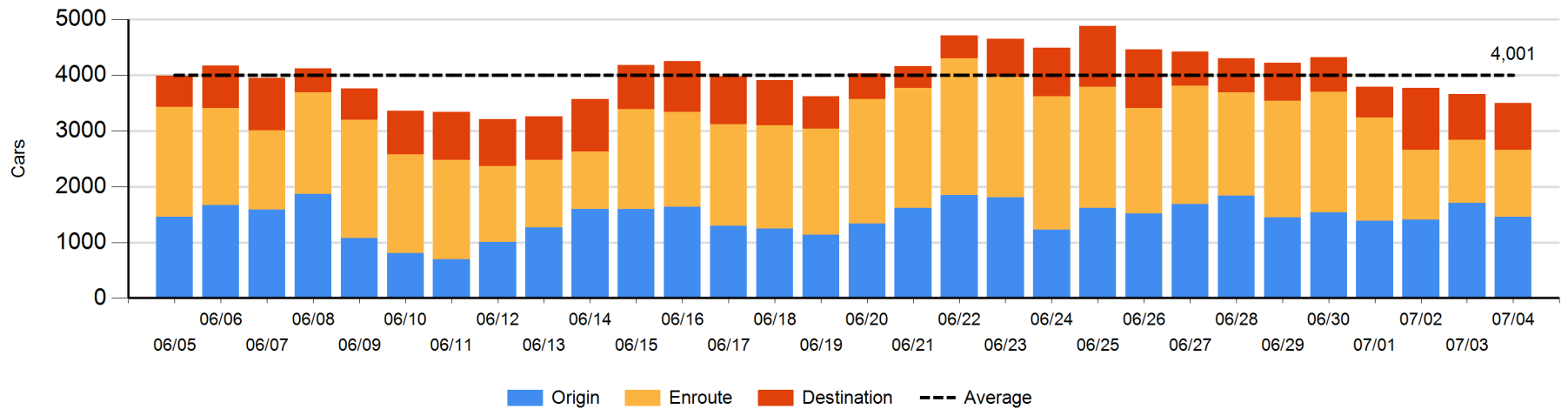
Change in Daily Loads on Wheels By Pipeline Location - Prior 24 Hours

	E Canada	Prince Rupert	Thunder Bay	USA/MEX	Vancouver	Total
CN						
Origin	-48	-2	46	-47	-186	-237
Enroute	43	38	-98	51	9	43
Destination	-19	-101	42	5	141	68
	-24	-65	-10	9	-36	-126
CP						
Origin	6		-135	81	-202	-250
Enroute	0		219	-1	-147	71
Destination	-1		10	16	-9	16
	5		94	96	-358	-163
US Rail / Short Line						
Origin						
Enroute	-6			-6		-12
Destination	-5			-10	-12	-27
	-11			-16	-12	-39

CN Loads on Wheels by Pipeline Location - 7/4/2018



CP Loads on Wheels by Pipeline Location - 7/4/2018

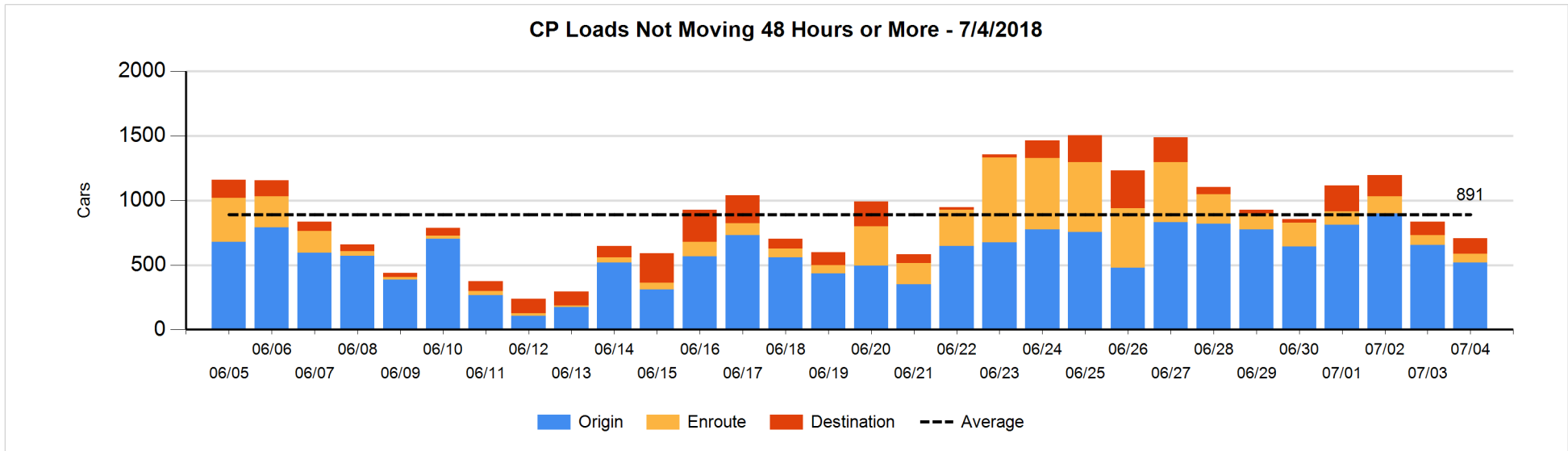
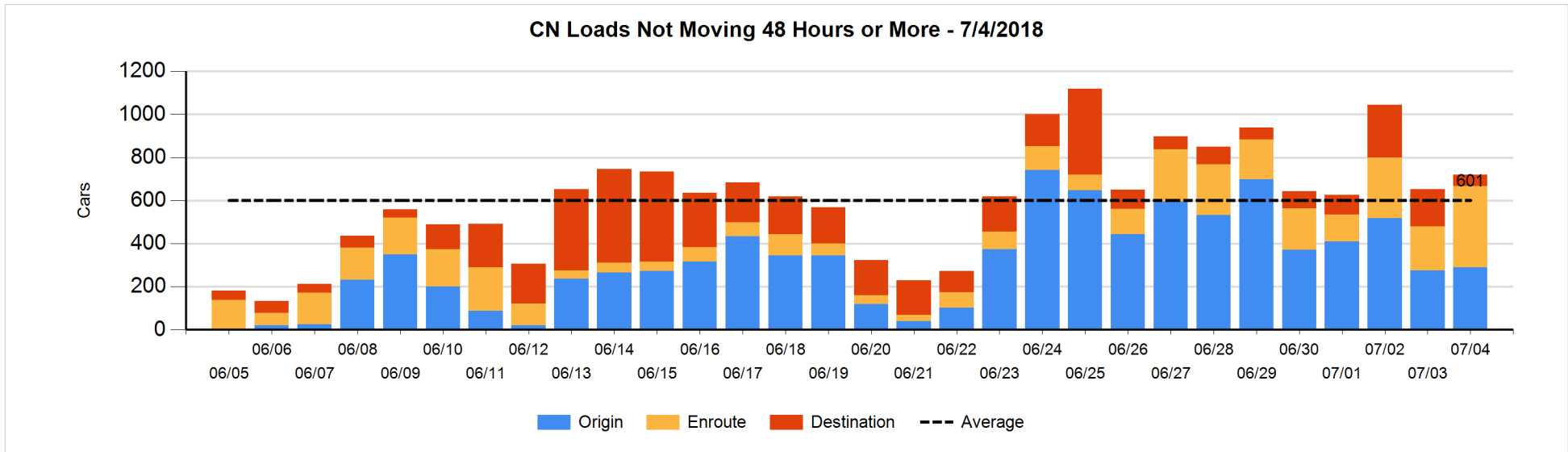


Loads Not Moving 48 Hours or More - 7/4/2018

	E Canada	Prince Rupert	Thunder Bay	USA/MEX	Vancouver	Total
CN						
Origin	25	103		5	156	289
Enroute	92	96		5	184	377
Destination	33		5	2	14	54
	150	199	5	12	354	720
CP						
Origin			163		356	519
Enroute	2		3	41	22	68
Destination			39	23	59	121
	2		205	64	437	708
US Rail / Short Line						
Origin						
Enroute				87		87
Destination	2			37	30	69
	2			124	30	156

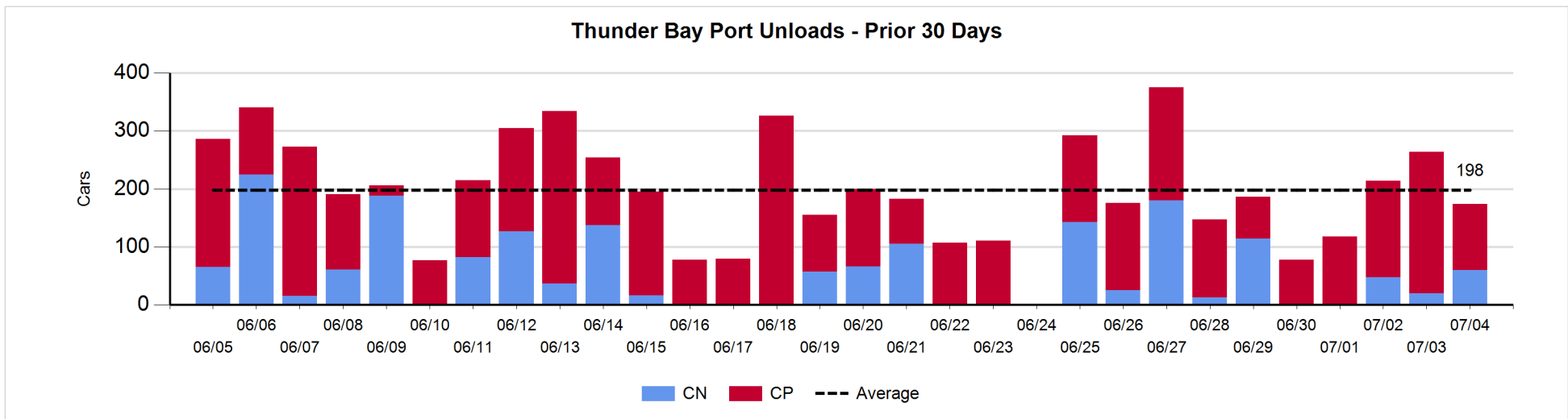
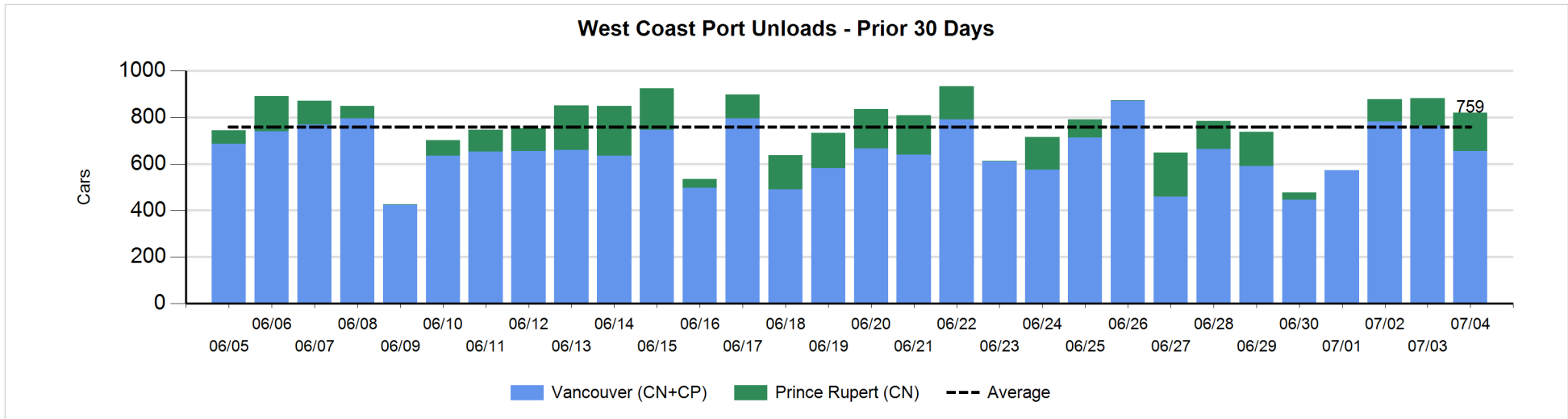
Change in Loads Not Moving 48 Hours or More - 7/4/2018

	E Canada	Prince Rupert	Thunder Bay	USA/MEX	Vancouver	Total
CN						
Origin	0	0		-31	46	15
Enroute	42	0		-1	131	172
Destination	-8	-87	1	2	-28	-120
	34	-87	1	-30	149	67
CP						
Origin			-66	-1	-68	-135
Enroute	1		-1	-7	-1	-8
Destination	-1		21	1	-4	17
	0		-46	-7	-73	-126
US Rail / Short Line						
Origin						
Enroute	-3			37		34
Destination	0			3	-11	-8
	-3			40	-11	26



Port Unloads - 7/4/2018

	Prince Rupert	Vancouver	West Coast Total	Thunder Bay	Total
CN	164	369	533	60	593
CP		287	287	114	401
	164	656	820	174	994



Port Terminal Status

Vancouver

Daily Activity for 7/4/2018

	Cars Arrived	Cars Received in Interchange	Cars Delivered in Interchange	Cars Placed for Unloading	Loads on Wheels at Destination As of 7/4/2018
CN	342	228	98	394	591
CP	448	98	228	377	389
SRY	1			5	63

Port Unloads

	07/04	07/03	Week To Date	Last Week
CN	369	449	1,339	2,156
CP	287	315	863	2,158
SRY	15	10	32	44

Age Profile of Loaded Cars Waiting Placement for Unloading

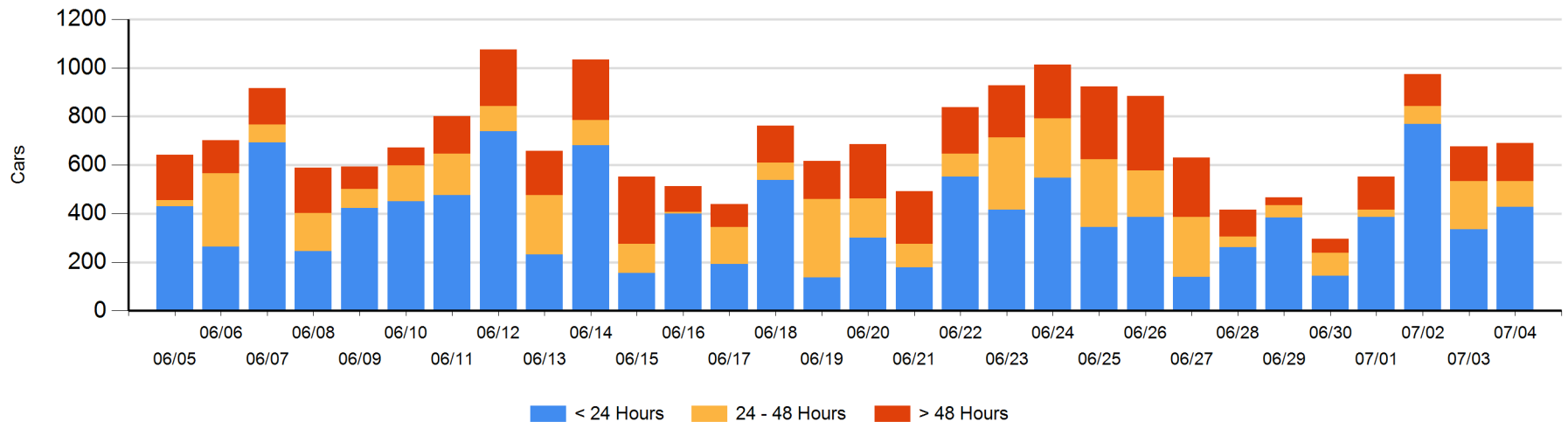
Today

	< 24 Hrs	24 - 48 Hrs	> 48-72 Hrs	> 72 Hrs	Total On Hand
CN	197	48	23	6	274
CP	231	57	45	67	400
SRY				16	16

Change in Last 24 Hours

	< 24 Hrs	24-48 Hrs	48 - 72 Hrs	> 72 Hrs
CN	116	-87	20	-2
CP	-23	-6	-7	7
SRY				-4

Loaded Cars on Hand Vancouver Waiting for Placement - Last 30 Days All Railways



Port Terminal Status

Prince Rupert

Daily Activity for 7/4/2018

	Cars Arrived	Cars Received in Interchange	Cars Delivered in Interchange	Cars Placed for Unloading	Loads on Wheels at Destination As of 7/4/2018
CN	90			64	111

Port Unloads

	07/04	07/03	Week To Date	Last Week
CN	164	117	376	568

Age Profile of Loaded Cars Waiting Placement for Unloading

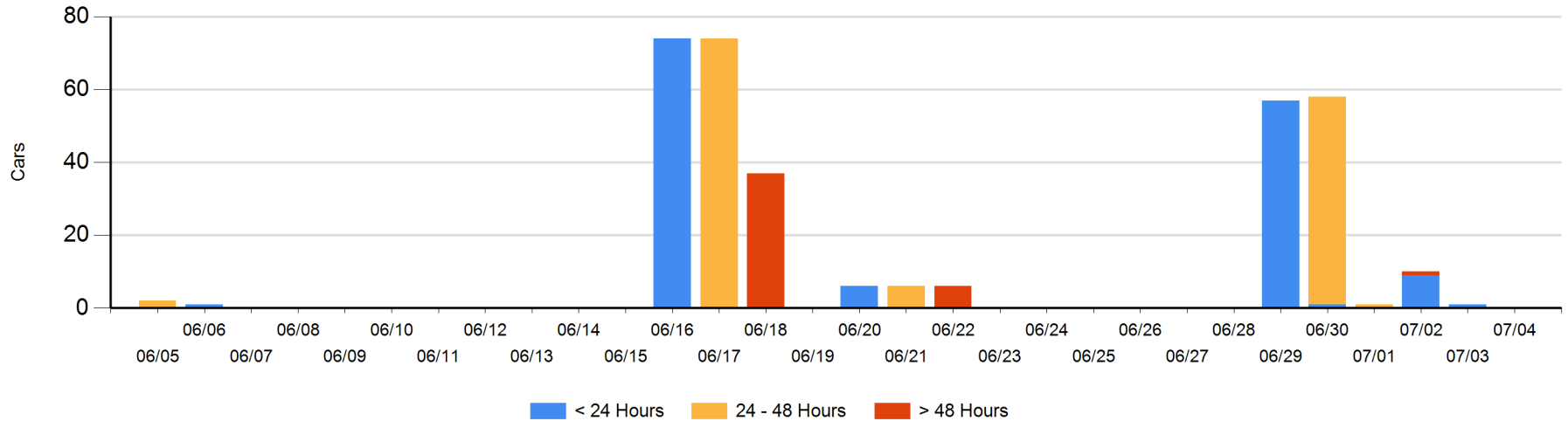
Today

	< 24 Hrs	24 - 48 Hrs	> 48-72 Hrs	> 72 Hrs	Total On Hand
CN					0

Change in Last 24 Hours

	< 24 Hrs	24-48 Hrs	48 - 72 Hrs	> 72 Hrs
CN	-1			

Loaded Cars on Hand Prince Rupert Waiting for Placement - Last 30 Days All Railways



Port Terminal Status

Thunder Bay

Daily Activity for 7/4/2018

	Cars Arrived	Cars Received in Interchange	Cars Delivered in Interchange	Cars Placed for Unloading	Loads on Wheels at Destination As of 7/4/2018
CN	102			42	151
CP	121			278	403

Port Unloads

	07/04	07/03	Week To Date	Last Week
CN	60	20	127	475
CP	114	244	525	897

Age Profile of Loaded Cars Waiting Placement for Unloading

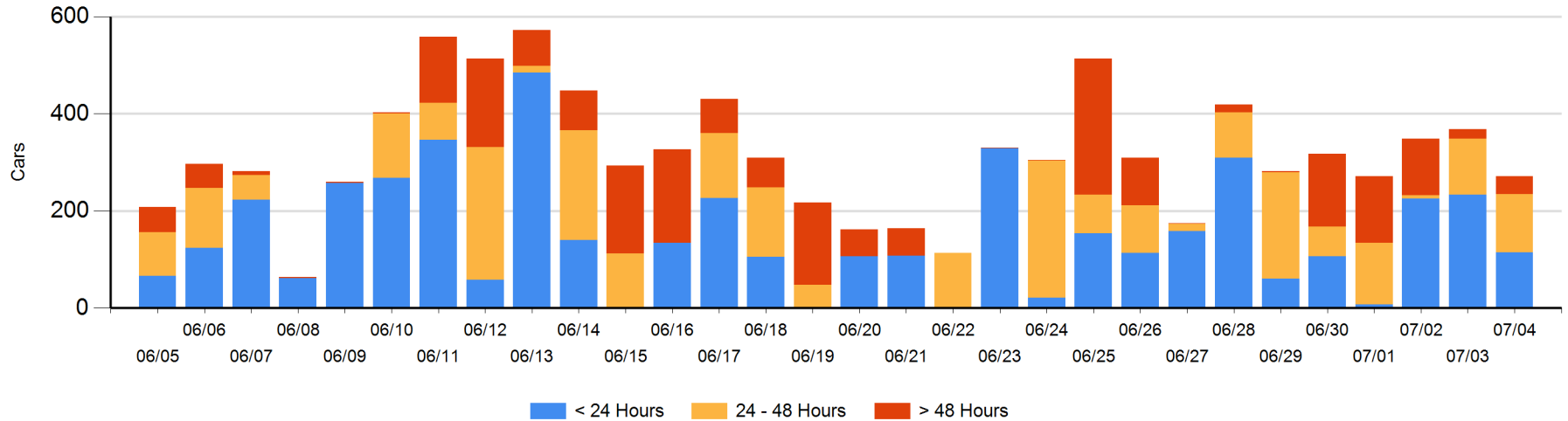
Today

	< 24 Hrs	24 - 48 Hrs	> 48-72 Hrs	> 72 Hrs	Total On Hand
CN	60	6		1	67
CP	55	113	22	14	204

Change in Last 24 Hours

	< 24 Hrs	24-48 Hrs	48 - 72 Hrs	> 72 Hrs
CN	54	6		0
CP	-172	-3	22	-4

Loaded Cars on Hand Thunder Bay Waiting for Placement - Last 30 Days All Railways



Measurement Definitions

Loads on Wheels	<p>Count of loaded rail cars including all rail cars that have been released loaded at origin and have not been reported by the railway as unloaded at destination.</p> <p>Counts include all rail cars (hopper cars and boxcars) moving within a pipeline.</p>
Loads Not Moving	<p>Loaded rail cars for which the railways have not reported a movement event for 48 hours or more whether the rail car is at origin, enroute or at destination.</p>
Port Unloads	<p>Count of rail cars reported by railways as unloaded at the western port destinations of Vancouver, Prince Rupert and Thunder Bay.</p> <p>Unload counts include all rail cars (hopper cars and boxcars) unloaded by all receivers including major port terminals, transloaders and other receivers.</p>
Cars Arrived	<p>Count of rail cars reported as arrived at the destination railway terminal.</p>
Cars Received in Interchange	<p>Count of rail cars received in interchange by each railway within a destination railway terminal. Interchange activity is tracked for the Vancouver and Thunder Bay pipelines as applicable.</p>
Cars Delivered in Interchange	<p>Count of rail cars delivered in interchange by each railway within a destination railway terminal. Interchange activity is tracked for the Vancouver and Thunder Bay pipelines as applicable.</p>
Cars Placed for Unloading	<p>Count of rail cars reported by the railways as placed loaded at the receiver's facility for unloading.</p>
Loads on Wheels at Destination	<p>Count of rail cars that remain under load within the destination railway terminal including rail cars that have been reported as placed for unloading but not yet reported as unloaded.</p>
Waiting Placement for Unloading	<p>Count of rail cars that have been reported as arrived at the destination railway terminal but not reported as placed for unloading by the railway.</p> <p>For the Ports of Vancouver, Prince Rupert and Thunder Bay the count of rail cars waiting placement for unloading is categorized by age – i.e. the elapsed time from arrival at destination to the current report date.</p>