

### **Note to Reader**

Prince Rupert unloads continue to be lower than normal due to ongoing maintenance at the terminal, resulting in reduced unload capacity. For Week 48 and 49, they have reported unloads at nearly 600 and 800, respectively. Alliance Grain Terminal in Vancouver has now begun planned maintenance which is expected to continue until mid-August.

### **SPEED READ**

- Loads on wheels declined overnight, marking a fall in both CN and CP volumes. On a net basis, volumes decreased due to lower traffic levels across all corridors.
- Network fluidity worsened overnight, led by an increase in idle car counts from both CN and CP by 237% and 71%, respectively. The total count of cars for 4+ days from both major railways rose significantly by 22% overnight - presently at 546 cars.
- Week 49 unloads finished ahead of prior week's performance by nearly 800 unloads, indicating an improvement in week over week performance across all three major ports.

=====

### **Loads on Wheels**

- Loads on wheels declined 9% (-743) overnight and have now decreased for two consecutive days. The decline reflects reduced traffic on both CN and CP – combined total at 7,928 and 6% below the trailing 30-day average.
- On a net basis, the fall in loads on wheels shows lower volumes across all corridors.
- CN volumes dropped slightly by 1% (-54) overnight with lower volumes across all corridors other than Vancouver. System wide CN loads on wheels now at 4,413 and 6% above the trailing 30-day average.
- CP volumes decreased for the second consecutive day, down significantly by 18% (-705) overnight, driven by lower levels in the Vancouver and Thunder Bay corridors. CP system wide loads on wheels now at 3,125, the lowest seen in the last 30 days, and 21% below the trailing 30-day average.
- Vancouver presently at 3,942, the lowest seen in the last 30 days, decreased 10% overnight and have now declined for two consecutive days, now 19% below the trailing 30-day average.
- The Prince Rupert pipeline now sits at 974, dropped significantly by 11% overnight, in line with the trailing 30 day-average.
- Thunder Bay volumes declined by 10% overnight - now at 1,528 and 16% above the trailing 30-day average with 63% of traffic moving on CP.

### **Hopper Car Rationing**

- No hopper car rationing was reported for either CN or CP in week 49 and none expected in week 50.

### **Loads Not Moving**

- **The count of cars not moving for 48+ hours increased significantly by 111% (+977) overnight, reflecting greater counts from both major railways. Idle car counts presently at 1,857.**
- CN
  - **The count of idle cars surged by 237% (+498) overnight - idle car counts now sits at 708.**
  - The number of cars idle for 4+ days up 9% overnight - now sits at 120 cars.
  - The count of cars not moving for 7+ days declined 3% overnight - now sits at 87 cars.
  - Vancouver represents 36% of all idle cars.

- In total 23% of all idle cars are dwelling at origin locations.
- CP
  - **CP counts rose significantly by 71% (+479) overnight - idle car counts - now at 1,149.**
  - The number of cars idle for 4+ days gained significantly by 26% overnight - now sits at 426 cars.
  - The number of cars idle for 7+ days declined significantly by 40% overnight and have now decreased for the second consecutive day - presently at 75 cars.
  - Vancouver accounts for 53% of all idle cars.
  - In total 77% of all idle cars are dwelling at origin locations.

### **Port Performance**

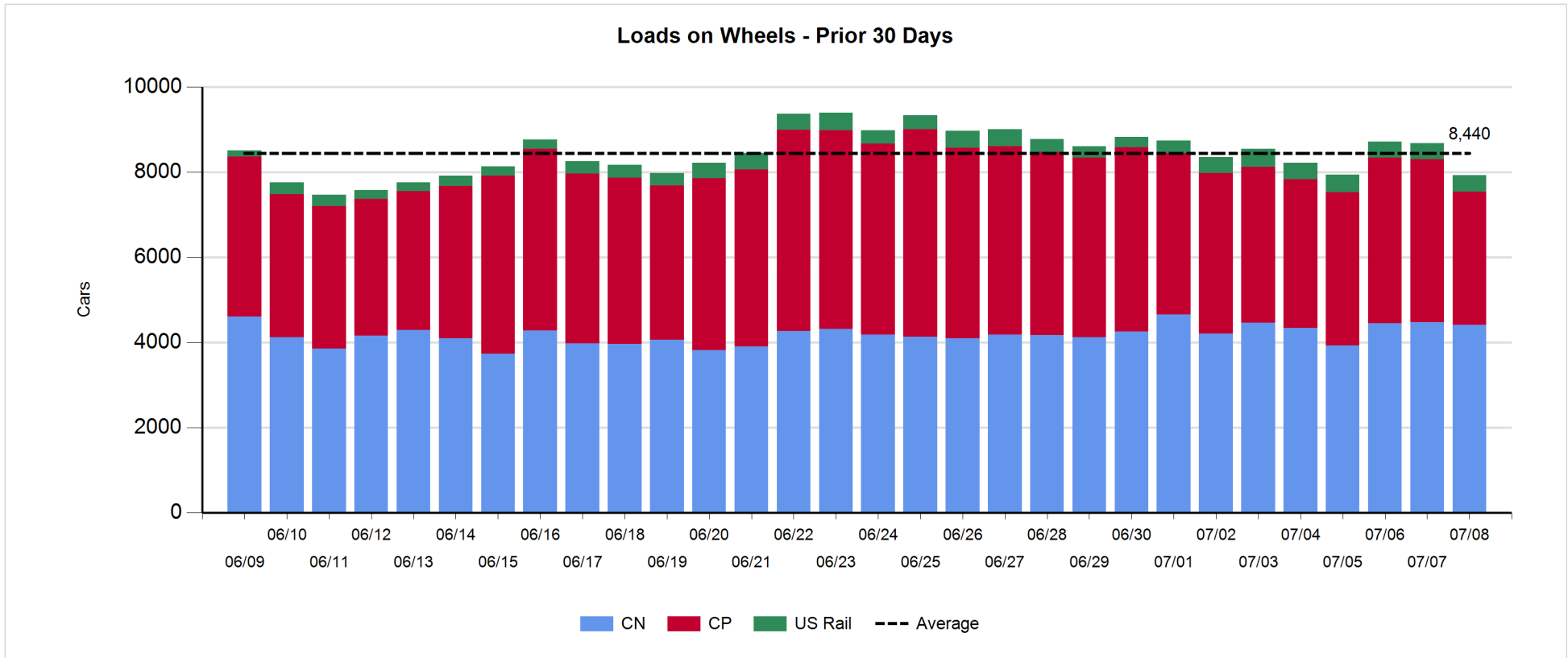
- CN and CP reported a total of 955 cars unloaded at the three major ports, below the 1,000-car threshold for the third consecutive day. Week 49 unloads concluded ahead of last week's pace by nearly 800 unloads, indicating increased unloads across all three ports.
- Vancouver
  - 664 unloads reported by CN and CP at the Port of Vancouver; CN - 355 and CP - 309.
  - There are less than 700 cars on site at Vancouver with nearly 500 cars arriving at the port in the last 24 hours.
  - CN and CP have more than 750 cars enroute to Vancouver, west of Alberta, with about 500 Kamloops and west and 69% of traffic currently moving on CN.
- Prince Rupert
  - Prince Rupert reported 119 unloads, above the 100-car threshold and ended ahead last week's unloads by more than 200.
  - Loads on wheels now below 1,000 cars.
  - There are fewer than 400 cars west of Jasper - predominantly Prince George and west.
  - There are currently more than 350 cars on site with zero cars arriving at the port in the last 24 hours. Given the structure of the pipeline, there appears to be sufficient cars available to support unloads in the early part of week 50.
- Thunder Bay
  - 172 unloads reported at Thunder Bay yesterday. Week 49 unloads finished ahead of last week's pace by nearly 300 unloads.
  - There are 900 cars on site at Thunder Bay with about 150 cars arriving at the port in the prior 24 hours.
  - There are around 300 cars enroute to Thunder Bay from Winnipeg and east. Cars on hand and those enroute should support unloads for the rest of week 50.

**Daily Loads on Wheels - 7/8/2018**

	E Canada	Prince Rupert	Thunder Bay	USA/MEX	Vancouver	Total
CN	373	974	561	204	2,301	4,413
CP	96		967	458	1,604	3,125
Short Line	15				37	52
US Rail				338		338
	484	974	1,528	1,000	3,942	7,928

**Change in Loads on Wheels - Prior 24 Hours**

	E Canada	Prince Rupert	Thunder Bay	USA/MEX	Vancouver	Total
CN	-2	-119	-10	-34	111	-54
CP	0		-162	-7	-536	-705
Short Line	1				-3	-2
US Rail				18		18
	-1	-119	-172	-23	-428	-743

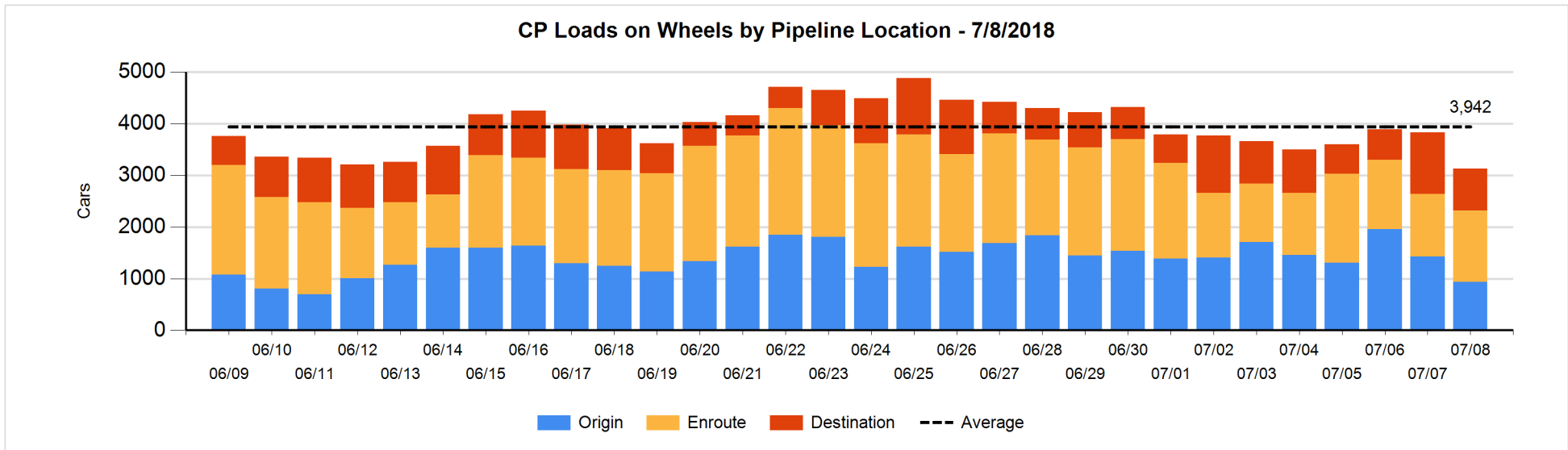
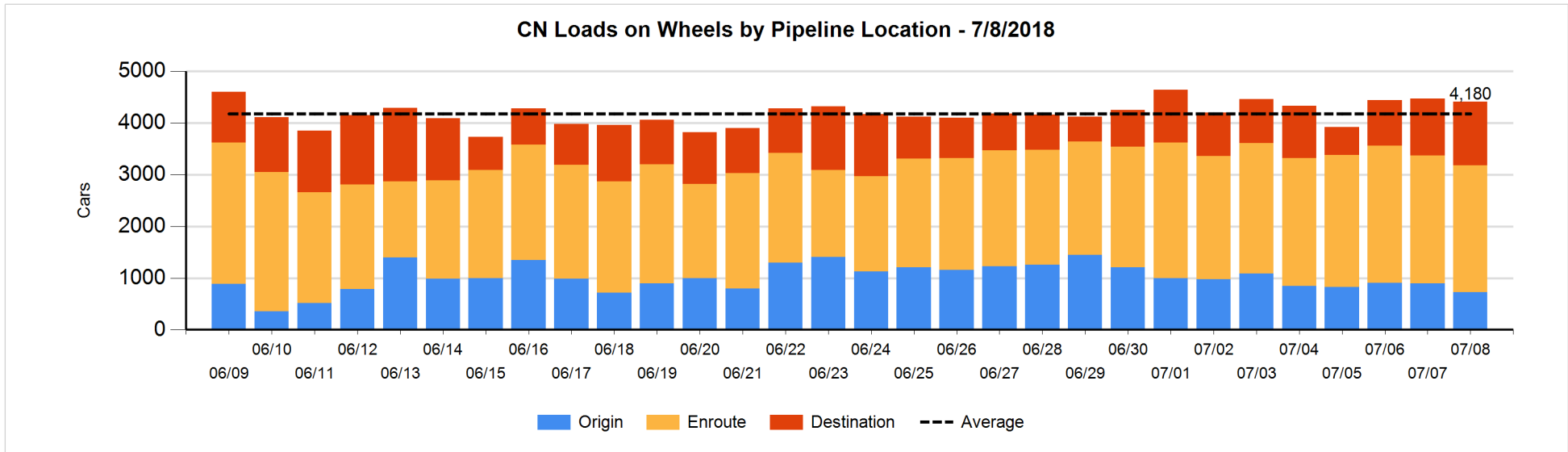


**Daily Loads on Wheels By Pipeline Location - 7/8/2018**

	E Canada	Prince Rupert	Thunder Bay	USA/MEX	Vancouver	Total
CN						
Origin	28	100		4	592	724
Enroute	267	495	267	187	1,235	2,451
Destination	78	379	294	13	474	1,238
	373	974	561	204	2,301	4,413
CP						
Origin	59		161	114	601	935
Enroute	36		200	321	824	1,381
Destination	1		606	23	179	809
	96		967	458	1,604	3,125
US Rail / Short Line						
Origin						
Enroute	1			203		204
Destination	14			135	37	186
	15			338	37	390

**Change in Daily Loads on Wheels By Pipeline Location - Prior 24 Hours**

	E Canada	Prince Rupert	Thunder Bay	USA/MEX	Vancouver	Total
CN						
Origin	-43	0	-119	-26	20	-168
Enroute	25	-44	36	-11	-36	-30
Destination	16	-75	73	3	127	144
	-2	-119	-10	-34	111	-54
CP						
Origin	0		-165	-154	-172	-491
Enroute	0		91	146	-71	166
Destination	0		-88	1	-293	-380
	0		-162	-7	-536	-705
US Rail / Short Line						
Origin						
Enroute	1			14		15
Destination	0			4	-3	1
	1			18	-3	16

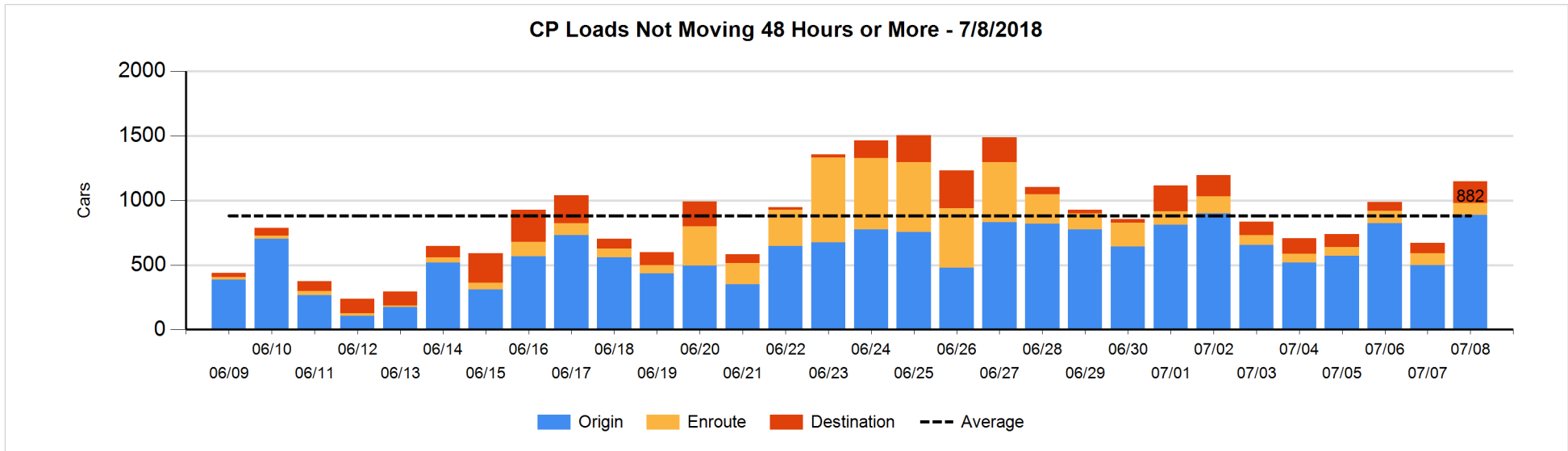
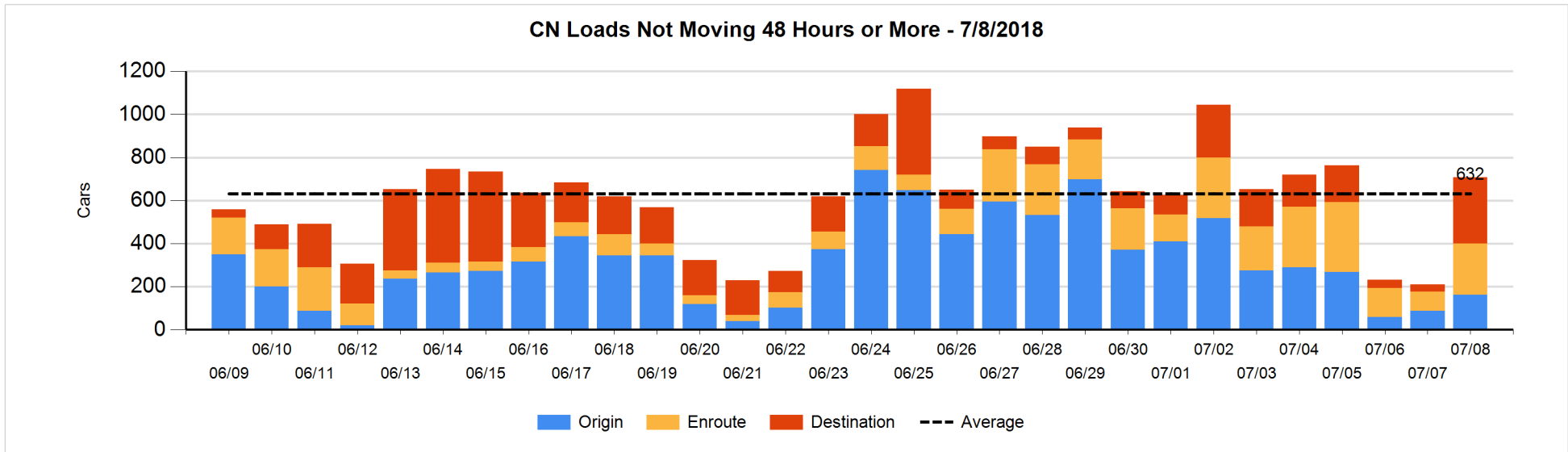


**Loads Not Moving 48 Hours or More - 7/8/2018**

	E Canada	Prince Rupert	Thunder Bay	USA/MEX	Vancouver	Total
<b>CN</b>						
Origin	4			4	155	163
Enroute	38	111		2	85	236
Destination	46	227	8	10	18	309
	88	338	8	16	258	708
<b>CP</b>						
Origin	59		161	114	552	886
Enroute	2		4	63	26	95
Destination	1		112	22	33	168
	62		277	199	611	1149
<b>US Rail / Short Line</b>						
Origin						
Enroute				72		72
Destination	1			67	35	103
	1			139	35	175

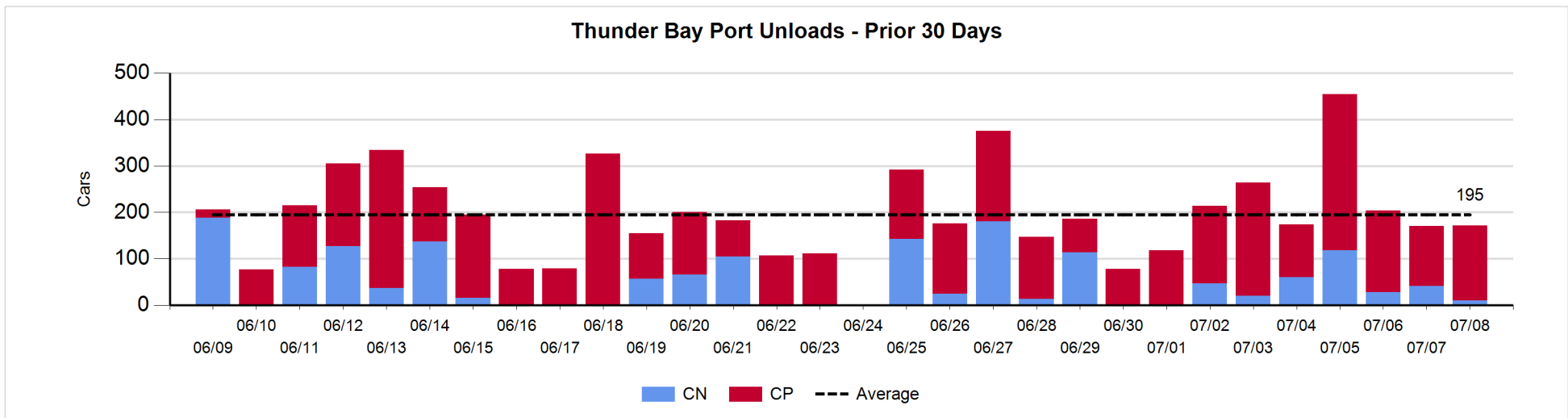
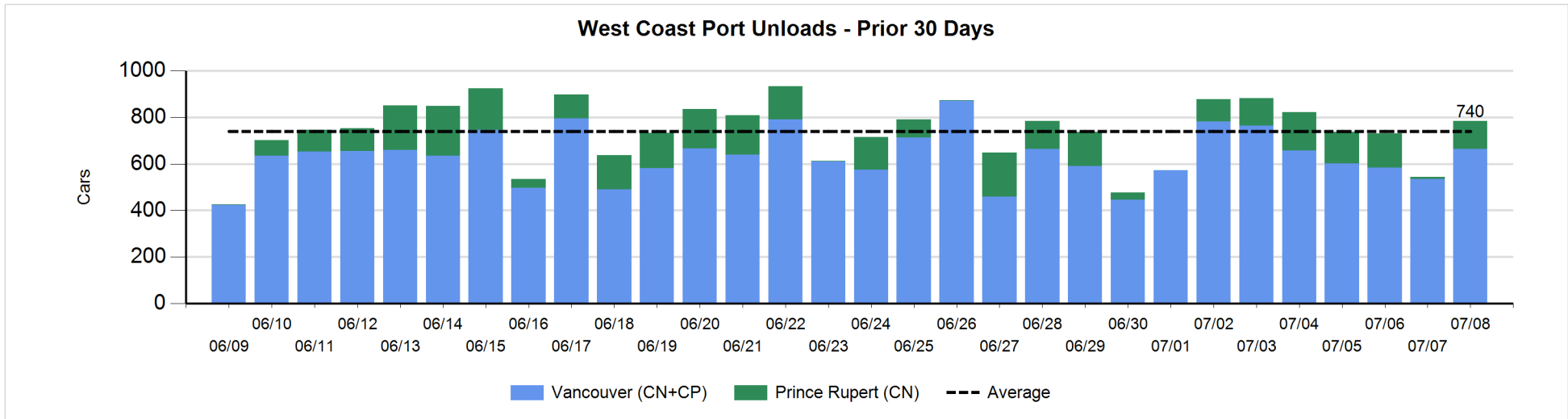
**Change in Loads Not Moving 48 Hours or More - 7/8/2018**

	E Canada	Prince Rupert	Thunder Bay	USA/MEX	Vancouver	Total
<b>CN</b>						
Origin	1			-26	100	75
Enroute	0	87		-2	63	148
Destination	39	227	3	0	6	275
	40	314	3	-28	169	498
<b>CP</b>						
Origin	57		0	1	330	388
Enroute	1		0	3	-1	3
Destination	0		108	0	-20	88
	58		108	4	309	479
<b>US Rail / Short Line</b>						
Origin						
Enroute				9		9
Destination	1			25	22	48
	1			34	22	57



**Port Unloads - 7/8/2018**

	Prince Rupert	Vancouver	West Coast Total	Thunder Bay	Total
CN	119	355	474	10	484
CP		309	309	162	471
	119	664	783	172	955





**Port Terminal Status**

**Vancouver**

Daily Activity for 7/8/2018

	Cars Arrived	Cars Received in Interchange	Cars Delivered in Interchange	Cars Placed for Unloading	Loads on Wheels at Destination As of 7/8/2018
CN	262	229	1	454	474
CP	237	1	231	246	179
SRY		2		2	37

**Port Unloads**

	07/08	07/07	Week To Date	Last Week
CN	355	210	2,546	2,156
CP	309	325	2,042	2,158
SRY	3	4	69	44

**Age Profile of Loaded Cars Waiting Placement for Unloading**

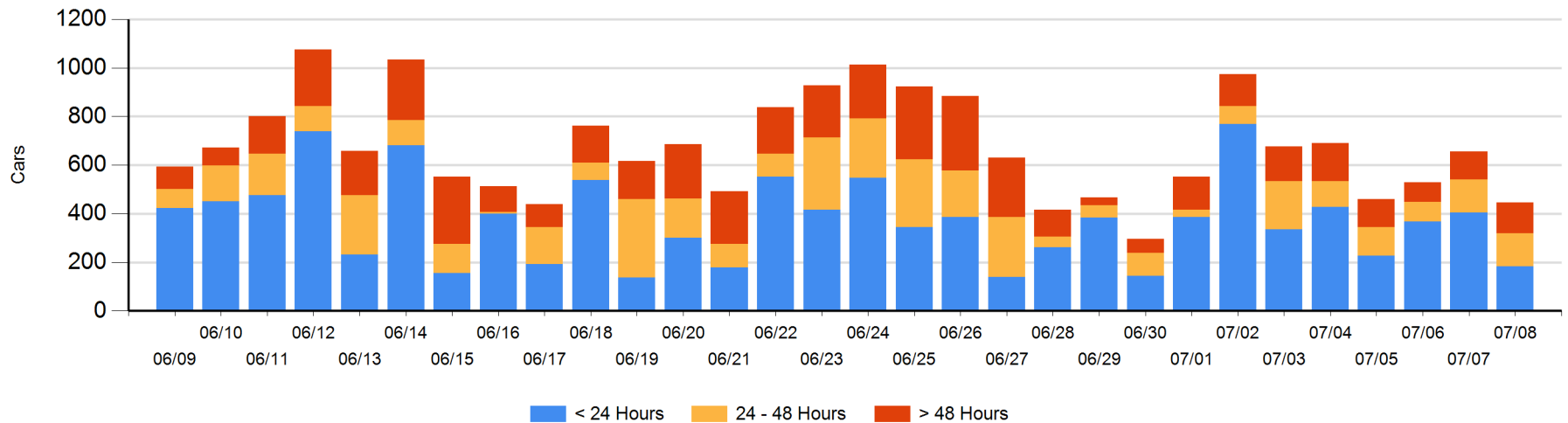
**Today**

	< 24 Hrs	24 - 48 Hrs	> 48-72 Hrs	> 72 Hrs	Total On Hand
CN	57	76	30	53	216
CP	127	60	3	35	225
SRY				4	4

**Change in Last 24 Hours**

	< 24 Hrs	24-48 Hrs	48 - 72 Hrs	> 72 Hrs
CN	-161	-56	-7	25
CP	-60	57	-19	11
SRY				-1

**Loaded Cars on Hand Vancouver Waiting for Placement - Last 30 Days All Railways**



**Port Terminal Status**

**Prince Rupert**

Daily Activity for 7/8/2018

	Cars Arrived	Cars Received in Interchange	Cars Delivered in Interchange	Cars Placed for Unloading	Loads on Wheels at Destination As of 7/8/2018
CN					379

**Port Unloads**

	07/08	07/07	Week To Date	Last Week
CN	119	8	785	568

**Age Profile of Loaded Cars Waiting Placement for Unloading**

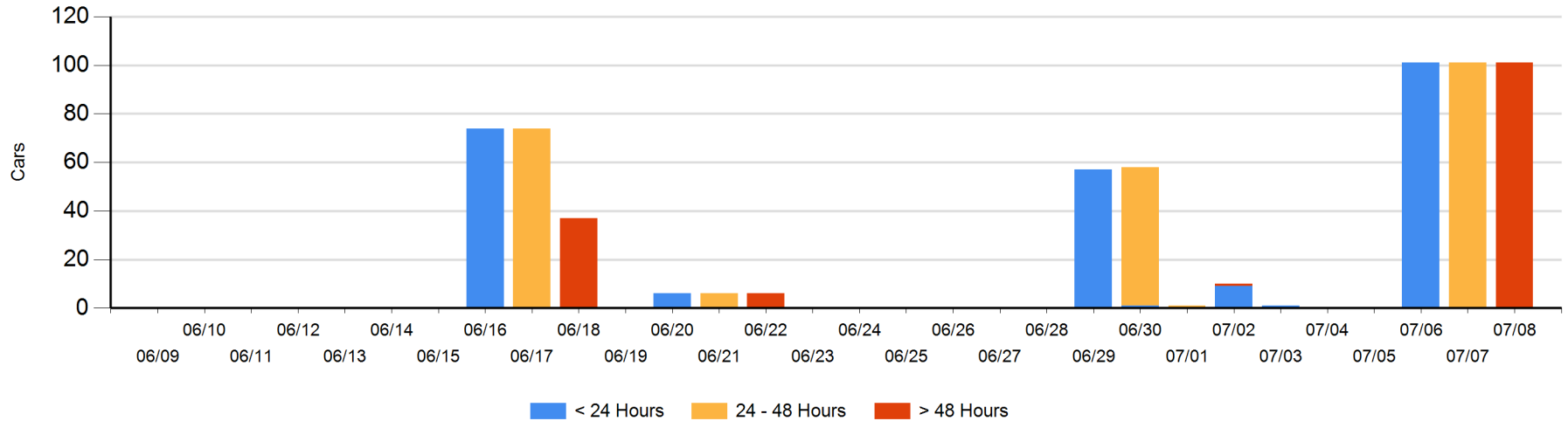
**Today**

	< 24 Hrs	24 - 48 Hrs	> 48-72 Hrs	> 72 Hrs	Total On Hand
CN			101		101

**Change in Last 24 Hours**

	< 24 Hrs	24-48 Hrs	48 - 72 Hrs	> 72 Hrs
CN		-101	101	

Loaded Cars on Hand Prince Rupert Waiting for Placement - Last 30 Days All Railways



**Port Terminal Status**

**Thunder Bay**

Daily Activity for 7/8/2018

	Cars Arrived	Cars Received in Interchange	Cars Delivered in Interchange	Cars Placed for Unloading	Loads on Wheels at Destination As of 7/8/2018
CN	83			102	294
CP	73			287	606

**Port Unloads**

	07/08	07/07	Week To Date	Last Week
CN	10	41	324	475
CP	162	130	1,329	897

**Age Profile of Loaded Cars Waiting Placement for Unloading**

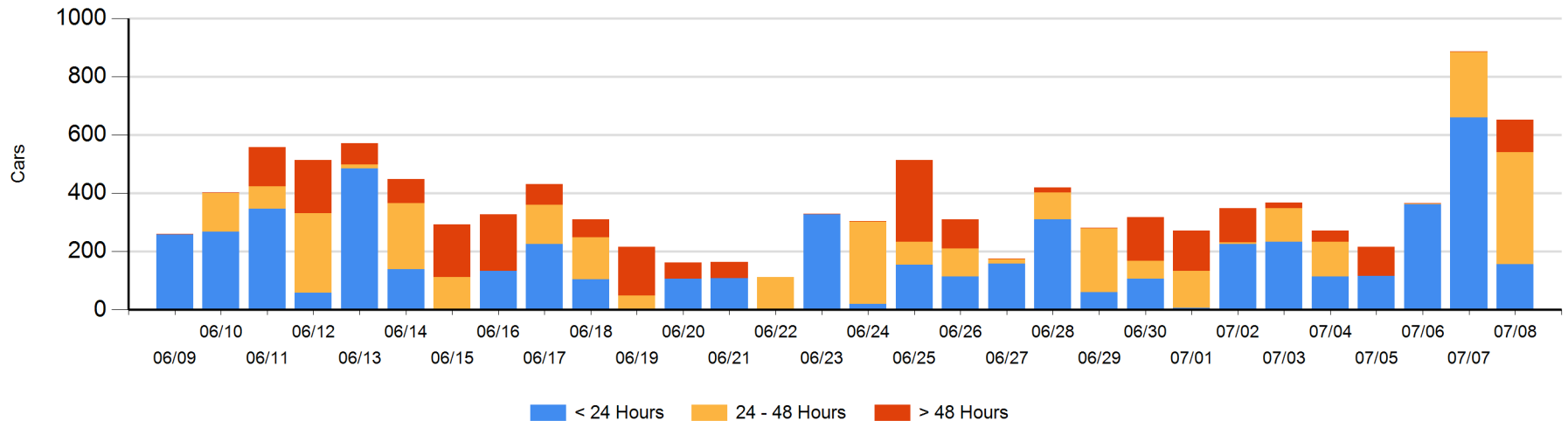
**Today**

	< 24 Hrs	24 - 48 Hrs	> 48-72 Hrs	> 72 Hrs	Total On Hand
CN	83	101	3		187
CP	73	283	108	1	465

**Change in Last 24 Hours**

	< 24 Hrs	24-48 Hrs	48 - 72 Hrs	> 72 Hrs
CN	-120	98	3	
CP	-383	61	107	0

**Loaded Cars on Hand Thunder Bay Waiting for Placement - Last 30 Days All Railways**



## Measurement Definitions

Loads on Wheels	<p>Count of loaded rail cars including all rail cars that have been released loaded at origin and have not been reported by the railway as unloaded at destination.</p> <p>Counts include all rail cars (hopper cars and boxcars) moving within a pipeline.</p>
Loads Not Moving	<p>Loaded rail cars for which the railways have not reported a movement event for 48 hours or more whether the rail car is at origin, enroute or at destination.</p>
Port Unloads	<p>Count of rail cars reported by railways as unloaded at the western port destinations of Vancouver, Prince Rupert and Thunder Bay.</p> <p>Unload counts include all rail cars (hopper cars and boxcars) unloaded by all receivers including major port terminals, transloaders and other receivers.</p>
Cars Arrived	<p>Count of rail cars reported as arrived at the destination railway terminal.</p>
Cars Received in Interchange	<p>Count of rail cars received in interchange by each railway within a destination railway terminal. Interchange activity is tracked for the Vancouver and Thunder Bay pipelines as applicable.</p>
Cars Delivered in Interchange	<p>Count of rail cars delivered in interchange by each railway within a destination railway terminal. Interchange activity is tracked for the Vancouver and Thunder Bay pipelines as applicable.</p>
Cars Placed for Unloading	<p>Count of rail cars reported by the railways as placed loaded at the receiver's facility for unloading.</p>
Loads on Wheels at Destination	<p>Count of rail cars that remain under load within the destination railway terminal including rail cars that have been reported as placed for unloading but not yet reported as unloaded.</p>
Waiting Placement for Unloading	<p>Count of rail cars that have been reported as arrived at the destination railway terminal but not reported as placed for unloading by the railway.</p> <p>For the Ports of Vancouver, Prince Rupert and Thunder Bay the count of rail cars waiting placement for unloading is categorized by age – i.e. the elapsed time from arrival at destination to the current report date.</p>