

### **Note to Reader**

Prince Rupert unloads continue to be lower than normal due to ongoing maintenance at the terminal, resulting in reduced unload capacity. For Week 49 and 50, they have reported unloads at about 800 and 1000, respectively. Alliance Grain Terminal in Vancouver has now begun planned maintenance which is expected to continue until mid-August.

### **SPEED READ**

- Loads on wheels declined slightly overnight, reflecting a decrease in CN volumes offset by higher CP volumes. On a net basis, volumes decreased due to lower volumes across all corridors other than Thunder Bay.
- Network fluidity improved overnight, led by a decline in idle car counts on both CN and CP by 41% and 34%, respectively. The total count of cars for 4+ days for both railways increased for the fifth consecutive day, up 18% overnight - now at 961 cars.
- Two days in Week 51 unloads now ahead of prior week's performance by more than 150 unloads, showing improved week over week performance at Vancouver and Thunder Bay.

=====

### **Loads on Wheels**

- Loads on wheels decreased marginally by 1% (-125) overnight and have now declined for the third consecutive day, due to reduced volumes on CN offset by greater volumes on CP - combined total at 8,458 and 1% below the trailing 30-day average.
- On a net basis, the fall in loads on wheels reflects lower traffic across all corridors other than Thunder Bay.
- CN volumes declined for three consecutive days, down 8% (-350) overnight with decreased traffic levels across all corridors except USA/MEX. System wide CN loads on wheels currently at 3,867 and 8% below the trailing 30-day average.
- CP volumes rose 7% (+283) overnight driven by volume increase in the Thunder Bay and USA/MEX corridors offset by a lower traffic in the Vancouver and E Canada corridors. CP system wide loads on wheels currently sits at 4,354 and 8% above the trailing 30-day average.
- Vancouver currently sits at 4,658, decreased for the third consecutive day, down 2% overnight and 2% below the trailing 30-day average.
- The Prince Rupert pipeline now sits at 871, down significantly by 15% overnight and 12% below the trailing 30 day-average.
- Thunder Bay volumes increased significantly by 13% overnight – presently at 1,767 and 19% above the trailing 30-day average with 82% of traffic moving on CP.

### **Hopper Car Rationing**

- No hopper car rationing was reported for either CN or CP in week 50 and none expected in week 51.

### **Loads Not Moving**

- **The count of cars not moving for 48+ hours declined significantly by 37% (-839) overnight, indicating reduced counts on both railways. Idle car counts now sit at 1,444 and 17% below the trailing 30 day-average.**
- CN
  - **The count of idle cars decreased significantly by 41% (-348) overnight - idle car counts currently at 504.**
  - The number of cars idle for 4+ days surged by 61% overnight - presently at 301 cars.
  - The count of cars not moving for 7+ days remained unchanged overnight - now sits at 97 cars.
  - Vancouver represents 63% of all idle cars.

- In total 49% of all idle cars are dwelling at origin locations.
- CP
  - **CP counts declined significantly by 34% (-491) overnight - idle car counts now at 940, below 1,400 for the first time in the last six days.**
  - The number of cars idle for 4+ days rose 5% overnight and have now increased for the fourth consecutive day - currently sits at 660 cars.
  - The number of cars idle for 7+ days was largely unchanged overnight - currently sits at 107 cars.
  - Vancouver accounts for 84% of all idle cars.
  - In total 61% of all idle cars are dwelling at origin locations.

## **Port Performance**

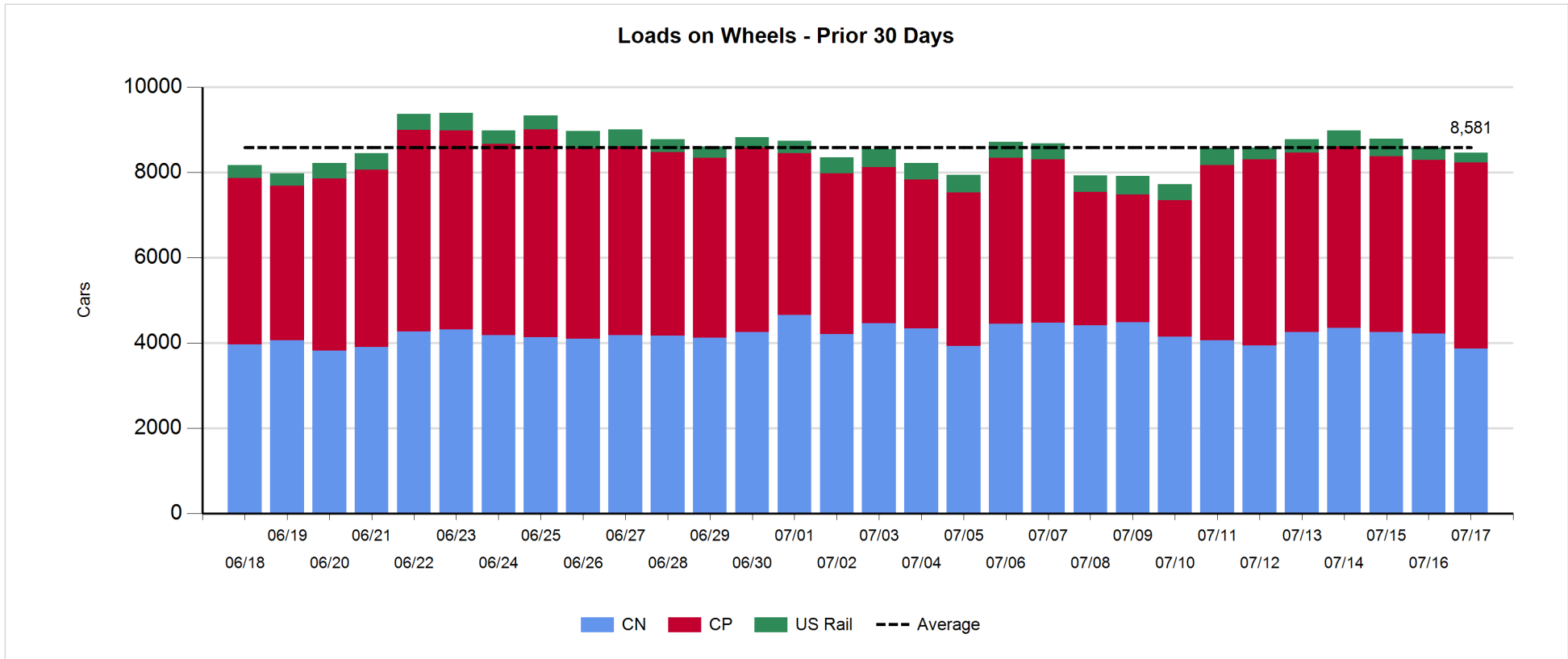
- CN and CP reported a total of 1,023 cars unloaded at the three major ports, above the 1,000-car threshold for the second consecutive day, and 12% above the trailing 30-day average. Two days in Week 51 unloads are tracking ahead of last week's pace by more than 150 unloads, showing higher unloads at Vancouver and Thunder Bay.
- Vancouver
  - 555 unloads reported by CN and CP at the Port of Vancouver; CN - 351 and CP - 204. Two days in Week 51 unloads are tracking ahead of last week's performance by nearly 100 unloads.
  - There are less than 900 cars on site at Vancouver with more than 450 cars arriving at the port in the last 24 hours.
  - CN and CP have fewer than 700 cars enroute to Vancouver, west of Alberta, with around 450 Kamloops and west and 67% of traffic currently moving on CN.
- Prince Rupert
  - Prince Rupert reported 171 unloads, above the 100-car threshold for the sixth consecutive day, now in line with last week's unloads after two days.
  - Loads on wheels now below 1,000 cars.
  - There are more than 250 cars west of Jasper - predominantly Prince George and west.
  - There are nearly 100 cars on site with about 100 cars arriving at the port in the last 24 hours. Given the structure of the pipeline, there appears to be sufficient cars available to support unloads for the next few days.
- Thunder Bay
  - 297 unloads reported at Thunder Bay yesterday. Two days in Week 51 unloads are tracking ahead of last week's pace by more than 50 unloads.
  - There are about 450 cars on site at Thunder Bay with nearly 30 cars arriving at the port in the prior 24 hours.
  - There are around 550 cars enroute to Thunder Bay from Winnipeg and east. Cars on hand and those enroute should support unloads for the balance of the week.

**Daily Loads on Wheels - 7/17/2018**

	E Canada	Prince Rupert	Thunder Bay	USA/MEX	Vancouver	Total
CN	367	871	326	130	2,173	3,867
CP	130		1,441	316	2,467	4,354
Short Line	38				16	54
US Rail				181	2	183
	535	871	1,767	627	4,658	8,458

**Change in Loads on Wheels - Prior 24 Hours**

	E Canada	Prince Rupert	Thunder Bay	USA/MEX	Vancouver	Total
CN	-32	-150	-100	3	-71	-350
CP	-1		307	16	-39	283
Short Line	2				-3	-1
US Rail				-59	2	-57
	-31	-150	207	-40	-111	-125

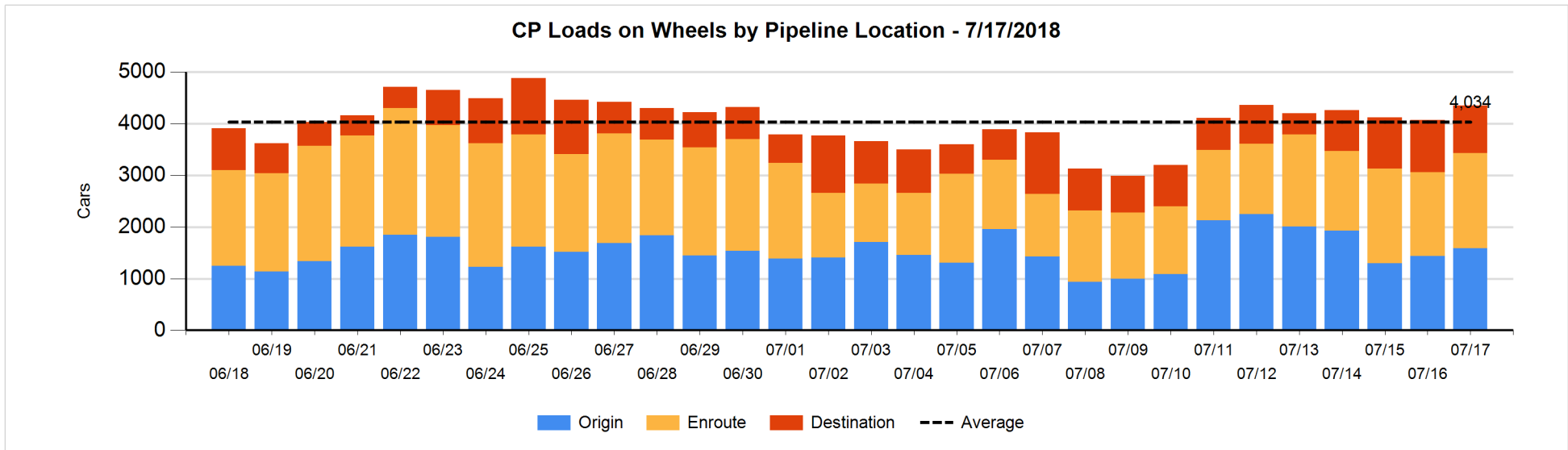
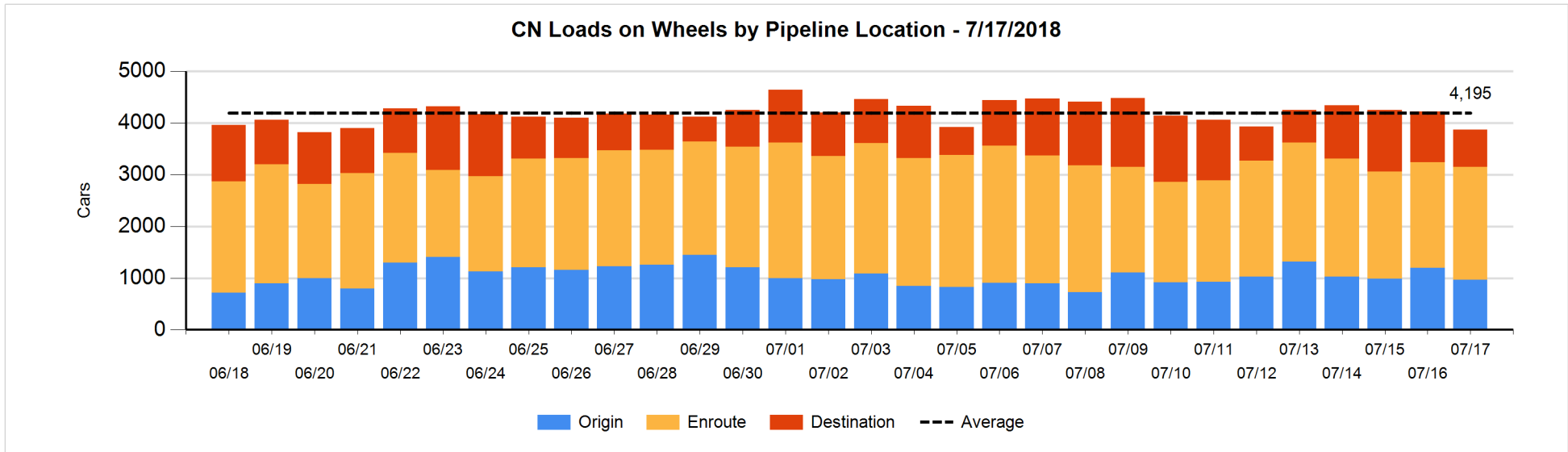


**Daily Loads on Wheels By Pipeline Location - 7/17/2018**

	E Canada	Prince Rupert	Thunder Bay	USA/MEX	Vancouver	Total
CN						
Origin	45	120	98	27	673	963
Enroute	206	665	95	91	1,128	2,185
Destination	116	86	133	12	372	719
	367	871	326	130	2,173	3,867
CP						
Origin	1		575	17	997	1,590
Enroute	128		550	194	970	1,842
Destination	1		316	105	500	922
	130		1,441	316	2,467	4,354
US Rail / Short Line						
Origin						
Enroute	25			97		122
Destination	13			84	18	115
	38			181	18	237

**Change in Daily Loads on Wheels By Pipeline Location - Prior 24 Hours**

	E Canada	Prince Rupert	Thunder Bay	USA/MEX	Vancouver	Total
CN						
Origin	-44	-235	0	5	39	-235
Enroute	16	153	0	-4	-23	142
Destination	-4	-68	-100	2	-87	-257
	-32	-150	-100	3	-71	-350
CP						
Origin	-2		358	-3	-197	156
Enroute	1		120	-75	171	217
Destination	0		-171	94	-13	-90
	-1		307	16	-39	283
US Rail / Short Line						
Origin						
Enroute	1			-45		-44
Destination	1			-14	-1	-14
	2			-59	-1	-58

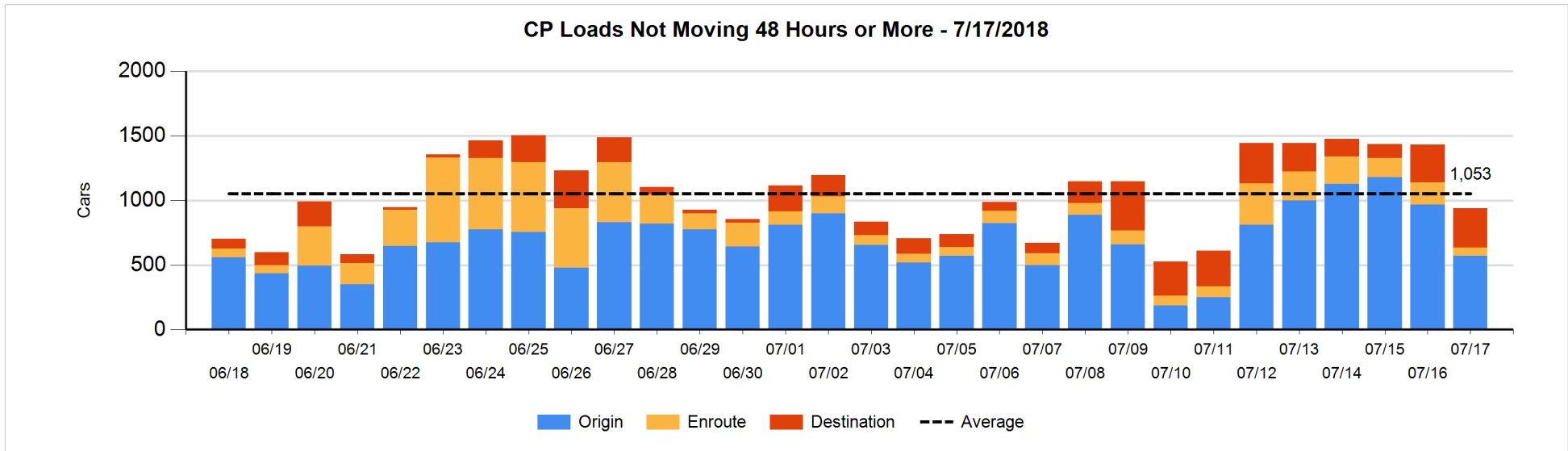
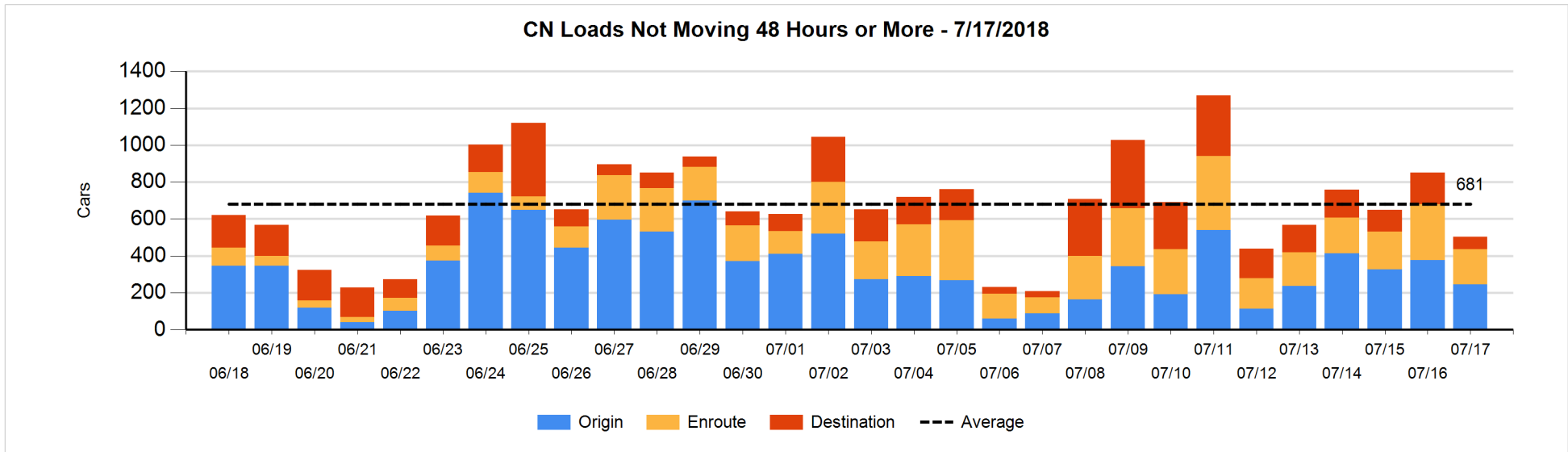


**Loads Not Moving 48 Hours or More - 7/17/2018**

	E Canada	Prince Rupert	Thunder Bay	USA/MEX	Vancouver	Total
<b>CN</b>						
Origin	26				220	246
Enroute	54	44	1	3	88	190
Destination	24	26		6	12	68
	104	70	1	9	320	504
<b>CP</b>						
Origin			3	1	568	572
Enroute				35	29	64
Destination			107	1	196	304
			110	37	793	940
<b>US Rail / Short Line</b>						
Origin						
Enroute	23			24		47
Destination	9			31	2	42
	32			55	2	89

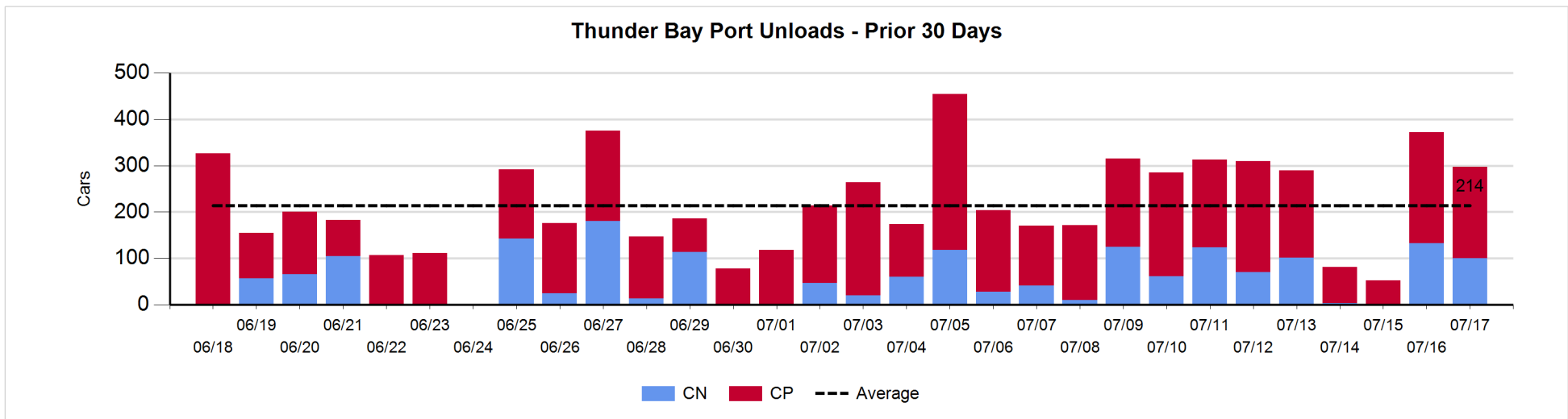
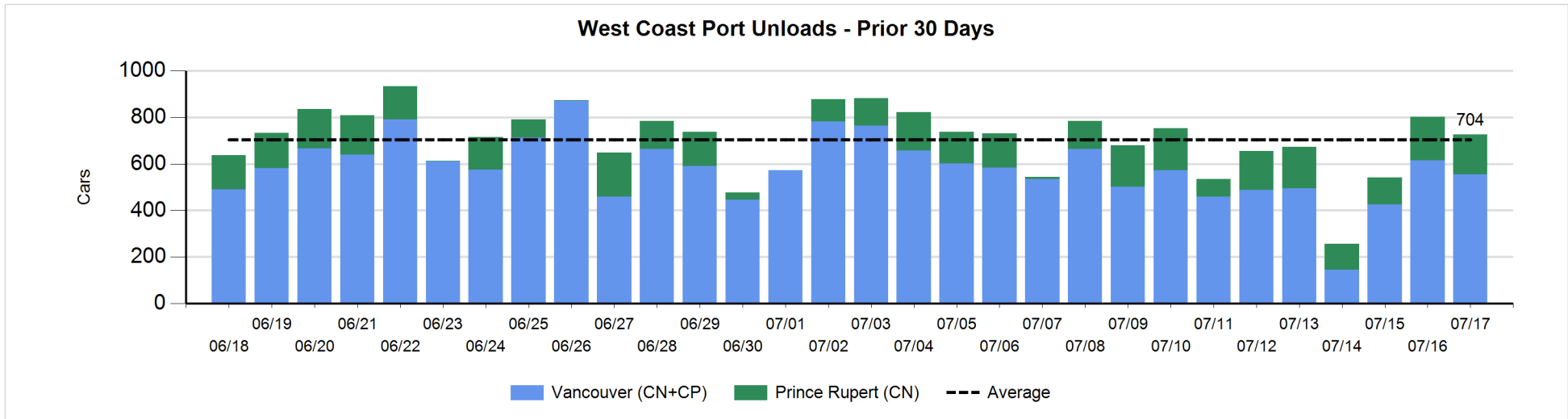
**Change in Loads Not Moving 48 Hours or More - 7/17/2018**

	E Canada	Prince Rupert	Thunder Bay	USA/MEX	Vancouver	Total
<b>CN</b>						
Origin	0	-51		-17	-63	-131
Enroute	19	-91	0	-3	-38	-113
Destination	17	0	-94	-1	-26	-104
	36	-142	-94	-21	-127	-348
<b>CP</b>						
Origin	-2		0	0	-392	-394
Enroute	-1		-77	-32	0	-110
Destination			-147	0	160	13
	-3		-224	-32	-232	-491
<b>US Rail / Short Line</b>						
Origin						
Enroute	0			-17		-17
Destination	0			13	-4	9
	0			-4	-4	-8



Port Unloads - 7/17/2018

	Prince Rupert	Vancouver	West Coast Total	Thunder Bay	Total
CN	171	351	522	100	622
CP		204	204	197	401
	171	555	726	297	1,023





**Port Terminal Status**

**Vancouver**

Daily Activity for 7/17/2018

	Cars Arrived	Cars Received in Interchange	Cars Delivered in Interchange	Cars Placed for Unloading	Loads on Wheels at Destination As of 7/17/2018
CN	144	224	138	498	372
CP	321	137	224	218	500
SRY	2	1		5	16

**Port Unloads**

	07/17	07/16	Week To Date	Last Week
CN	351	446	797	2,576
CP	204	168	372	511
SRY	20	10	30	58

**Age Profile of Loaded Cars Waiting Placement for Unloading**

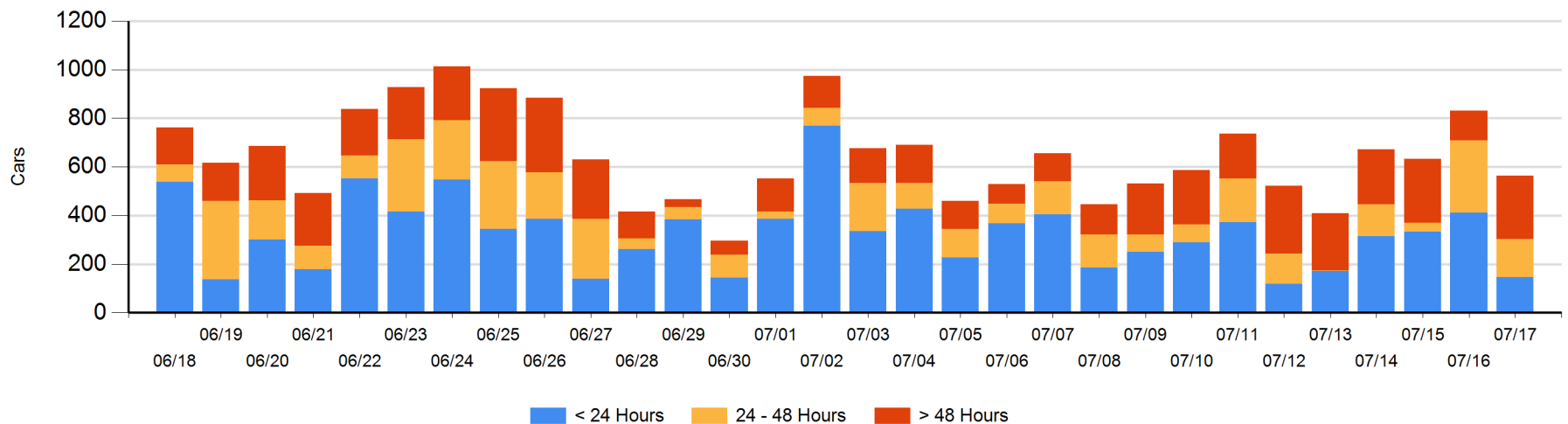
**Today**

	< 24 Hrs	24 - 48 Hrs	> 48-72 Hrs	> 72 Hrs	Total On Hand
CN	97	58	14	15	184
CP	47	98	206	26	377
SRY					0

**Change in Last 24 Hours**

	< 24 Hrs	24-48 Hrs	48 - 72 Hrs	> 72 Hrs
CN	-120	3	7	-14
CP	-147	-146	183	-37
SRY				

**Loaded Cars on Hand Vancouver Waiting for Placement - Last 30 Days All Railways**



**Port Terminal Status**

**Prince Rupert**

Daily Activity for 7/17/2018

	Cars Arrived	Cars Received in Interchange	Cars Delivered in Interchange	Cars Placed for Unloading	Loads on Wheels at Destination As of 7/17/2018
CN	103			103	86

**Port Unloads**

	07/17	07/16	Week To Date	Last Week
CN	171	188	359	1,004

**Age Profile of Loaded Cars Waiting Placement for Unloading**

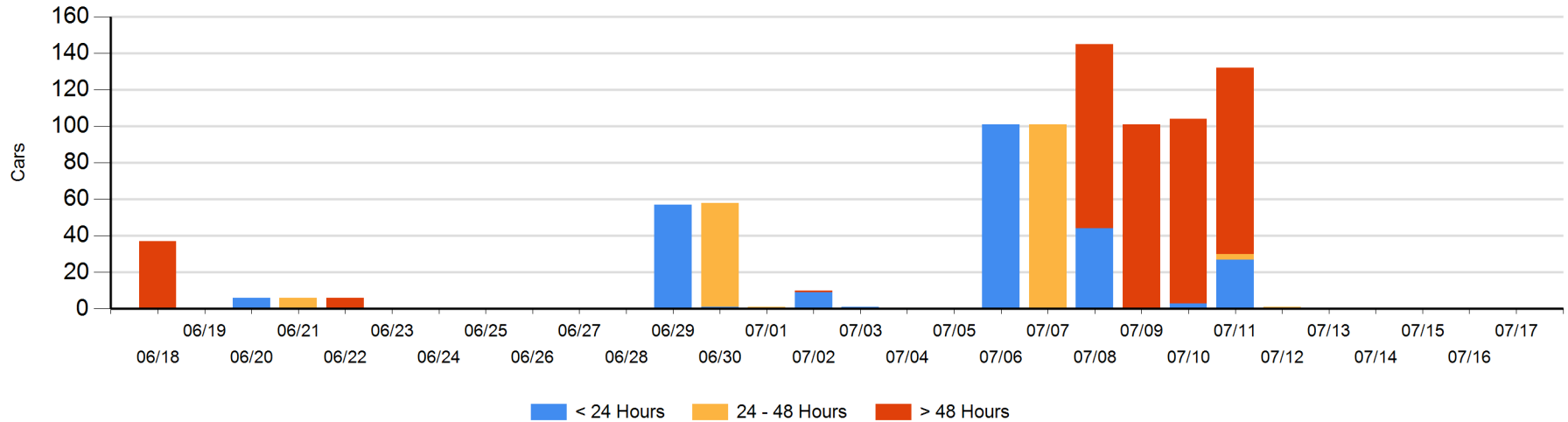
**Today**

	< 24 Hrs	24 - 48 Hrs	> 48-72 Hrs	> 72 Hrs	Total On Hand
CN					0

**Change in Last 24 Hours**

	< 24 Hrs	24-48 Hrs	48 - 72 Hrs	> 72 Hrs
CN				

Loaded Cars on Hand Prince Rupert Waiting for Placement - Last 30 Days All Railways



**Port Terminal Status**

**Thunder Bay**

Daily Activity for 7/17/2018

	Cars Arrived	Cars Received in Interchange	Cars Delivered in Interchange	Cars Placed for Unloading	Loads on Wheels at Destination As of 7/17/2018
CN				84	133
CP	25			134	316

**Port Unloads**

	07/17	07/16	Week To Date	Last Week
CN	100	133	233	485
CP	197	239	436	1,162

**Age Profile of Loaded Cars Waiting Placement for Unloading**

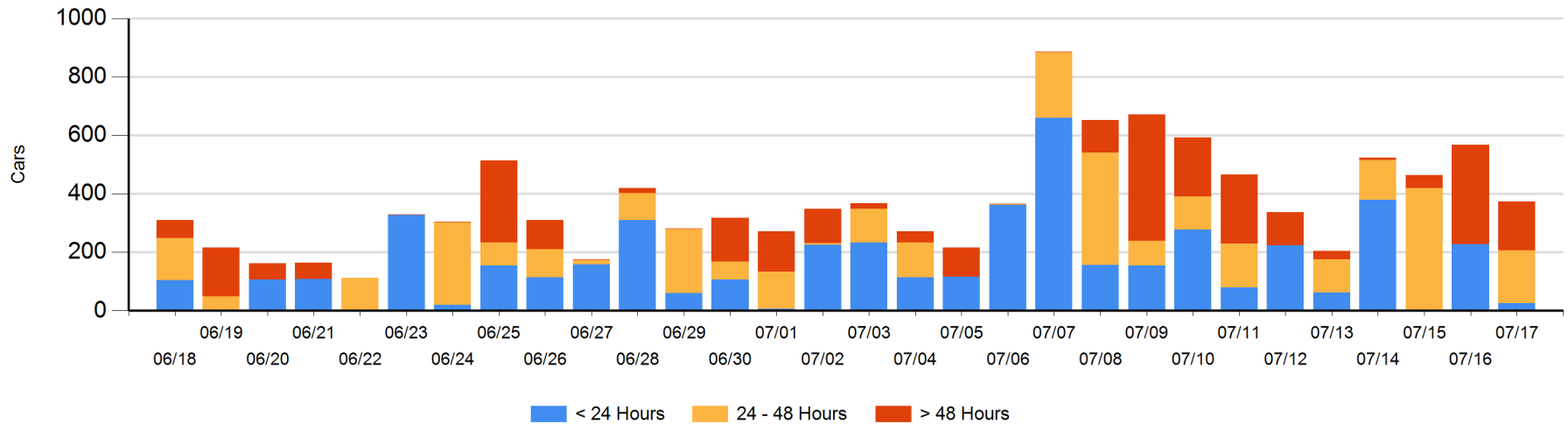
**Today**

	< 24 Hrs	24 - 48 Hrs	> 48-72 Hrs	> 72 Hrs	Total On Hand
CN		10		13	23
CP	25	172		154	351

**Change in Last 24 Hours**

	< 24 Hrs	24-48 Hrs	48 - 72 Hrs	> 72 Hrs
CN	-10	10	-97	13
CP	-192	172	-235	146

**Loaded Cars on Hand Thunder Bay Waiting for Placement - Last 30 Days All Railways**



## Measurement Definitions

Loads on Wheels	<p>Count of loaded rail cars including all rail cars that have been released loaded at origin and have not been reported by the railway as unloaded at destination.</p> <p>Counts include all rail cars (hopper cars and boxcars) moving within a pipeline.</p>
Loads Not Moving	<p>Loaded rail cars for which the railways have not reported a movement event for 48 hours or more whether the rail car is at origin, enroute or at destination.</p>
Port Unloads	<p>Count of rail cars reported by railways as unloaded at the western port destinations of Vancouver, Prince Rupert and Thunder Bay.</p> <p>Unload counts include all rail cars (hopper cars and boxcars) unloaded by all receivers including major port terminals, transloaders and other receivers.</p>
Cars Arrived	<p>Count of rail cars reported as arrived at the destination railway terminal.</p>
Cars Received in Interchange	<p>Count of rail cars received in interchange by each railway within a destination railway terminal. Interchange activity is tracked for the Vancouver and Thunder Bay pipelines as applicable.</p>
Cars Delivered in Interchange	<p>Count of rail cars delivered in interchange by each railway within a destination railway terminal. Interchange activity is tracked for the Vancouver and Thunder Bay pipelines as applicable.</p>
Cars Placed for Unloading	<p>Count of rail cars reported by the railways as placed loaded at the receiver's facility for unloading.</p>
Loads on Wheels at Destination	<p>Count of rail cars that remain under load within the destination railway terminal including rail cars that have been reported as placed for unloading but not yet reported as unloaded.</p>
Waiting Placement for Unloading	<p>Count of rail cars that have been reported as arrived at the destination railway terminal but not reported as placed for unloading by the railway.</p> <p>For the Ports of Vancouver, Prince Rupert and Thunder Bay the count of rail cars waiting placement for unloading is categorized by age – i.e. the elapsed time from arrival at destination to the current report date.</p>