

### **Note to Reader**

Alliance Grain Terminal in Vancouver has now begun planned maintenance which is expected to continue until mid-August.

### **SPEED READ**

- Loads on wheels increased overnight, reflecting an increase in CN and CP volumes. On a net basis, volume increased due to higher volumes in the Vancouver, Prince Rupert and Thunder Bay corridors offset by reduced volumes in the USA/MEX and E Canada corridors.
- Network fluidity improved overnight, led by a decrease in idle car counts on both CN and CP by 27% and 13%, respectively. The total count of cars for 4+ days on both railways declined significantly by 32% overnight - currently sits at 544 cars.
- Four days in Week 52 unloads now behind prior week's performance by fewer than 600 unloads, marking reduced unloads at Thunder Bay and Prince Rupert offset by improved week over week performance at Vancouver.

=====

### **Loads on Wheels**

- Loads on wheels increased 4% (+256) overnight due to higher traffic levels on both CN and CP - combined total at 7,456 and 9% below the trailing 30-day average.
- On a net basis, the increase in loads on wheels indicates higher volumes in the Vancouver, Prince Rupert and Thunder Bay corridors offset by lower traffic in the USA/MEX and E Canada corridors.
- CN volumes rose 6% (+229) overnight and have now increased for the second consecutive day, with higher traffic in the Thunder Bay, Prince Rupert and Vancouver corridors offset by lower volumes in the USA/MEX and E Canada corridors. System wide CN loads on wheels now at 3,930 and 4% below the trailing 30-day average.
- CP volumes increased marginally 1% (+33) overnight driven by increased volumes in the Vancouver corridor offset by reduced traffic in the Thunder Bay, USA/MEX and E Canada corridors. CP system wide loads on wheels currently at 3,382 and 12% below the trailing 30-day average.
- Vancouver currently sits at 3,231, rose 9% (+272) overnight and 25% below the trailing 30-day average.
- The Prince Rupert pipeline now at 1,071, gained 8% (+81) overnight and 7% above the trailing 30-day average.
- Thunder Bay volumes increased slightly by 1% (+13) overnight - now at 1,966, the highest seen in the last 30 days, and 19% above the trailing 30-day average with 68% of traffic moving on CP.

### **Hopper Car Rationing**

- No hopper car rationing was reported for either CN or CP in week 51 and none expected in week 52.

### **Loads Not Moving**

- **The count of cars not moving for 48+ hours decreased 20% (-304) overnight, reflecting lower counts on both railways. Idle car counts currently at 1,244 and 29% below the trailing 30 day-average.**
- CN
  - **The count of idle cars declined 27% (-195) overnight - idle car counts currently at 537.**
  - The number of cars idle for 4+ days decreased significantly by 42% (-207) overnight - now sits at 287 cars.
  - The count of cars not moving for 7+ days declined significantly by 65% (-179) overnight - presently at 95 cars.
  - Vancouver represents 23% of all idle cars.

- In total 75% of all idle cars are dwelling at origin locations.
- CP
  - **CP counts declined 13% (-109) overnight - idle car counts now at 707.**
  - The number of cars idle for 4+ days decreased 15% (-46) overnight - presently at 257 cars.
  - The number of cars idle for 7+ days declined 25% (-14) overnight - currently at 41 cars.
  - Vancouver accounts for 31% of all idle cars.
  - In total 48% of all idle cars are dwelling at origin locations.

## **Port Performance**

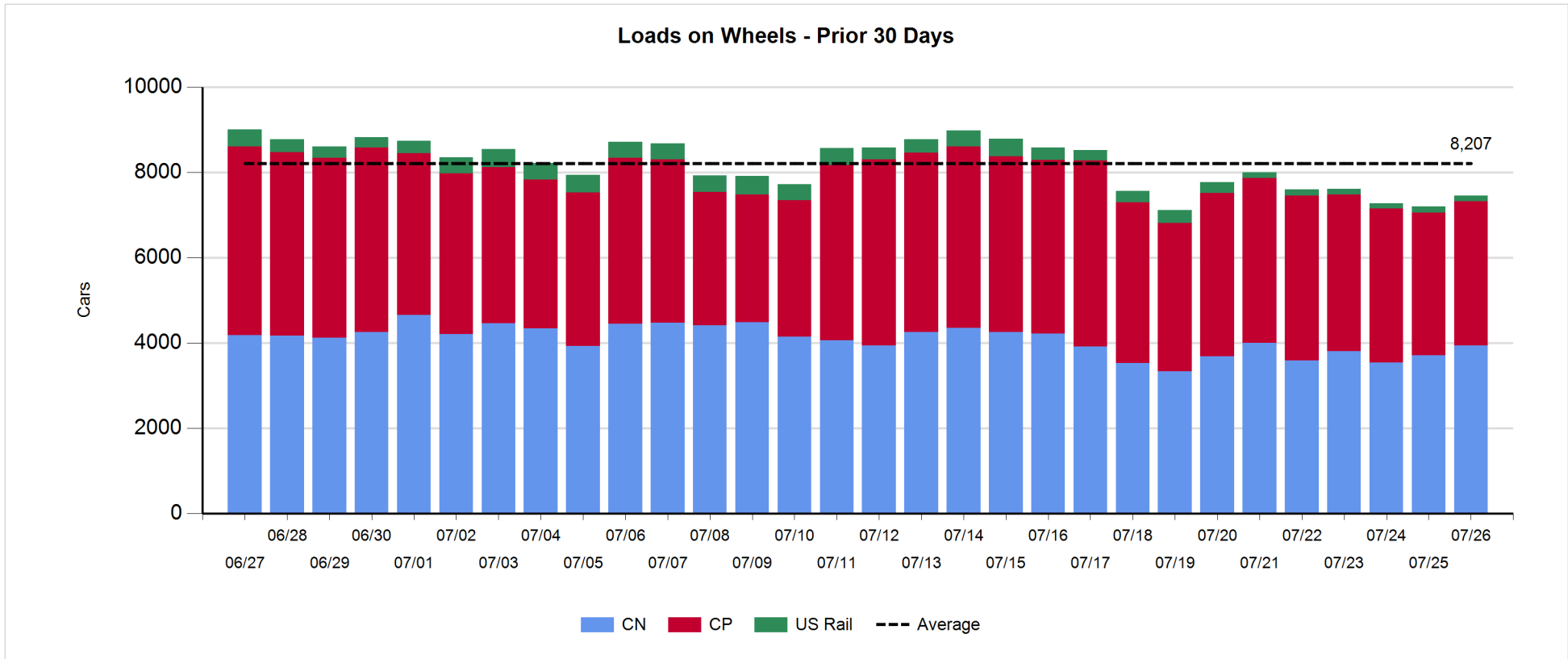
- CN and CP reported a total of 882 cars unloaded at the three major ports, below the 1,000-car threshold for the third consecutive day, and 3% below the trailing 30 day-average. Four days in Week 52 unloads are tracking behind last week's pace by less than 600 unloads, marking lower unloads at Thunder Bay and Prince Rupert offset by higher unloads at Vancouver.
- Vancouver
  - 531 unloads reported by CN and CP at the Port of Vancouver; CN - 321 and CP - 210. Four days in Week 52 unloads are tracking ahead of last week's performance by more than 200 unloads.
  - There are 500 cars on site at Vancouver with nearly 500 cars arriving at the port in the last 24 hours.
  - CN and CP have around 550 cars in British Columbia en route to Vancouver, with about 200 Kamloops and west and 67% of traffic currently moving on CN.
- Prince Rupert
  - Prince Rupert reported 120 unloads, now behind last week's unloads after four days by 300 unloads.
  - Loads on wheels now above 1,000 cars.
  - There are more than 250 cars west of Jasper - predominantly Prince George and west.
  - There are fewer than 100 cars on site at Prince Rupert with more than 150 cars arriving at the port in the last 24 hours. Given the structure of the pipeline, there is a chance unloads may be challenged in the next few days.
- Thunder Bay
  - 231 unloads reported at Thunder Bay yesterday. Four days in Week 52 unloads are tracking behind last week's pace by about 500 unloads.
  - There are more than 700 cars on site at Thunder Bay with around 300 cars arriving at the port in the prior 24 hours.
  - There are more than 450 cars en route to Thunder Bay from Winnipeg and east. Cars on hand and those en route should support unloads for the balance of the week.

**Daily Loads on Wheels - 7/26/2018**

	E Canada	Prince Rupert	Thunder Bay	USA/MEX	Vancouver	Total
CN	305	1,071	622	179	1,753	3,930
CP	76		1,344	498	1,464	3,382
Short Line	5				14	19
US Rail				125		125
	386	1,071	1,966	802	3,231	7,456

**Change in Loads on Wheels - Prior 24 Hours**

	E Canada	Prince Rupert	Thunder Bay	USA/MEX	Vancouver	Total
CN	-1	81	93	-19	75	229
CP	-38		-80	-47	198	33
Short Line	0				-1	-1
US Rail				-5		-5
	-39	81	13	-71	272	256

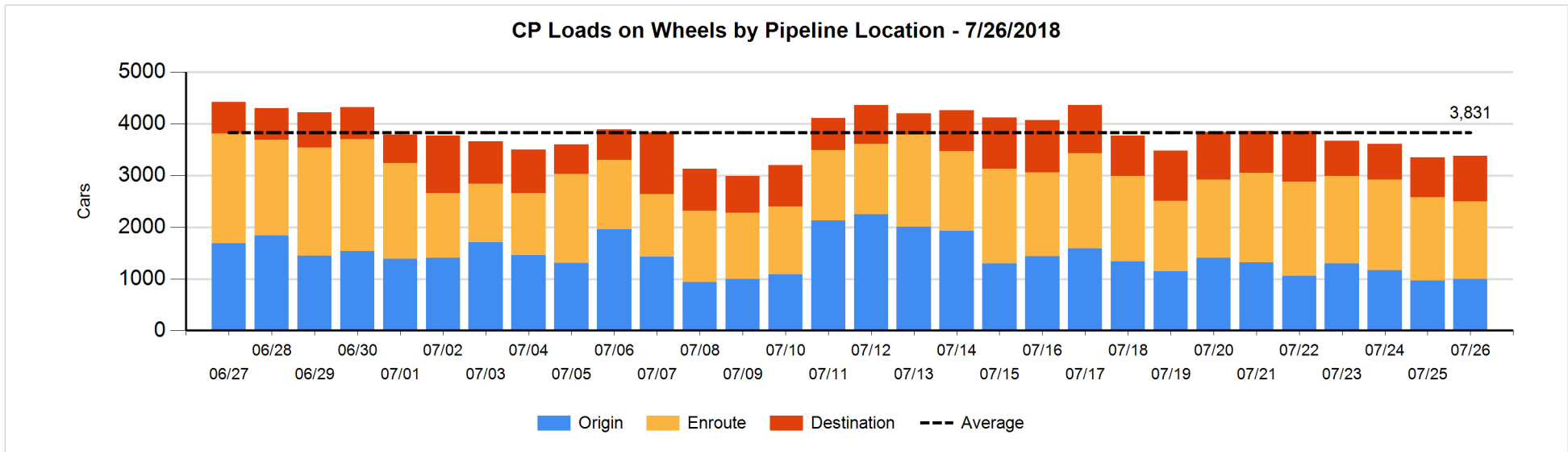
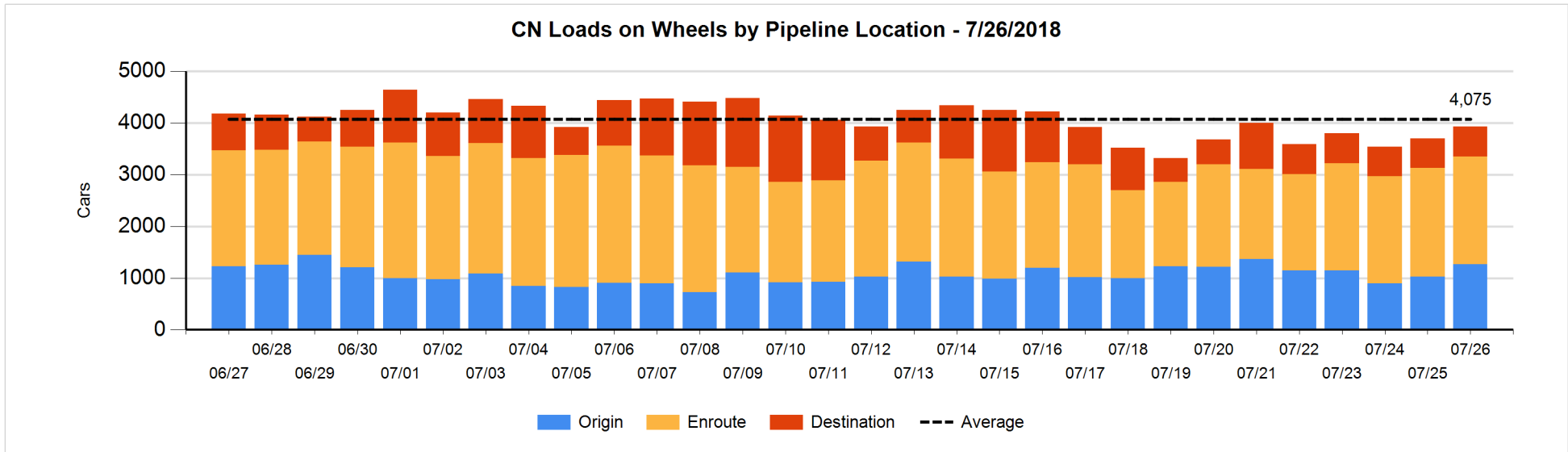


**Daily Loads on Wheels By Pipeline Location - 7/26/2018**

	E Canada	Prince Rupert	Thunder Bay	USA/MEX	Vancouver	Total
CN						
Origin	29	422	257	34	524	1,266
Enroute	186	577	166	122	1,032	2,083
Destination	90	72	199	23	197	581
	305	1,071	622	179	1,753	3,930
CP						
Origin	5		233	180	575	993
Enroute	69		580	261	599	1,509
Destination	2		531	57	290	880
	76		1,344	498	1,464	3,382
US Rail / Short Line						
Origin						
Enroute				85		85
Destination	5			40	14	59
	5			125	14	144

**Change in Daily Loads on Wheels By Pipeline Location - Prior 24 Hours**

	E Canada	Prince Rupert	Thunder Bay	USA/MEX	Vancouver	Total
CN						
Origin	25	122	189	-12	-83	241
Enroute	-26	-95	-88	-20	206	-23
Destination	0	54	-8	13	-48	11
	-1	81	93	-19	75	229
CP						
Origin	-24		-175	1	227	29
Enroute	-14		7	-63	-37	-107
Destination	0		88	15	8	111
	-38		-80	-47	198	33
US Rail / Short Line						
Origin						
Enroute				1		1
Destination	0			-6	-1	-7
	0			-5	-1	-6

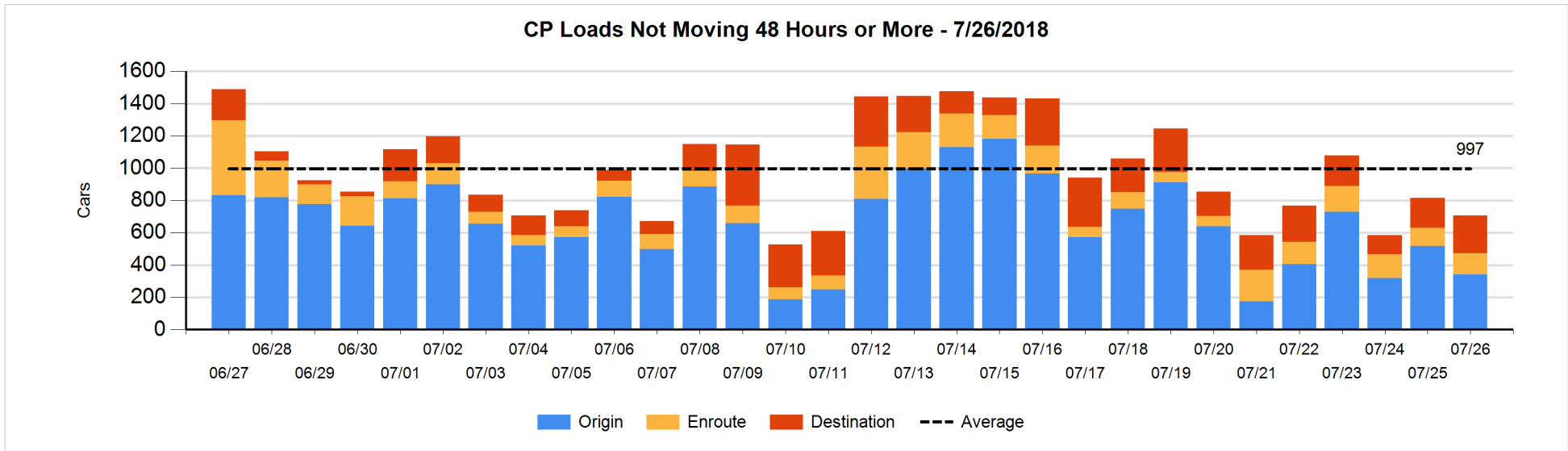
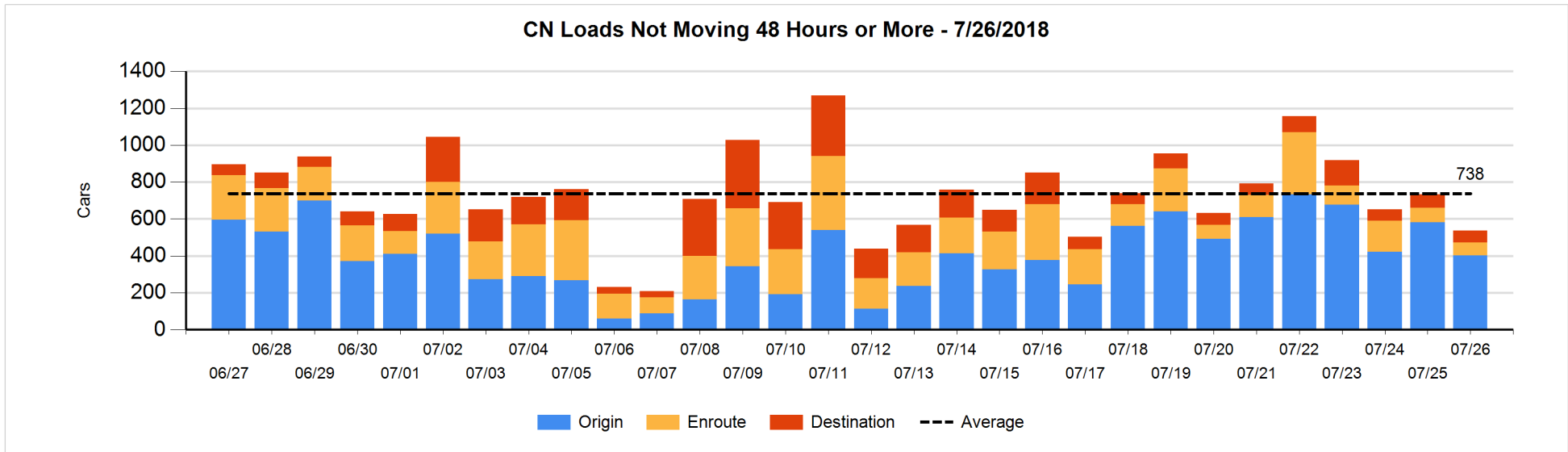


**Loads Not Moving 48 Hours or More - 7/26/2018**

	E Canada	Prince Rupert	Thunder Bay	USA/MEX	Vancouver	Total
<b>CN</b>						
Origin	4	254	59	27	57	401
Enroute	3	6	1	13	48	71
Destination	40	1		4	20	65
	47	261	60	44	125	537
<b>CP</b>						
Origin	3		71	152	115	341
Enroute	30		14	13	75	132
Destination	2		199	4	29	234
	35		284	169	219	707
<b>US Rail / Short Line</b>						
Origin						
Enroute				17		17
Destination				16	6	22
				33	6	39

**Change in Loads Not Moving 48 Hours or More - 7/26/2018**

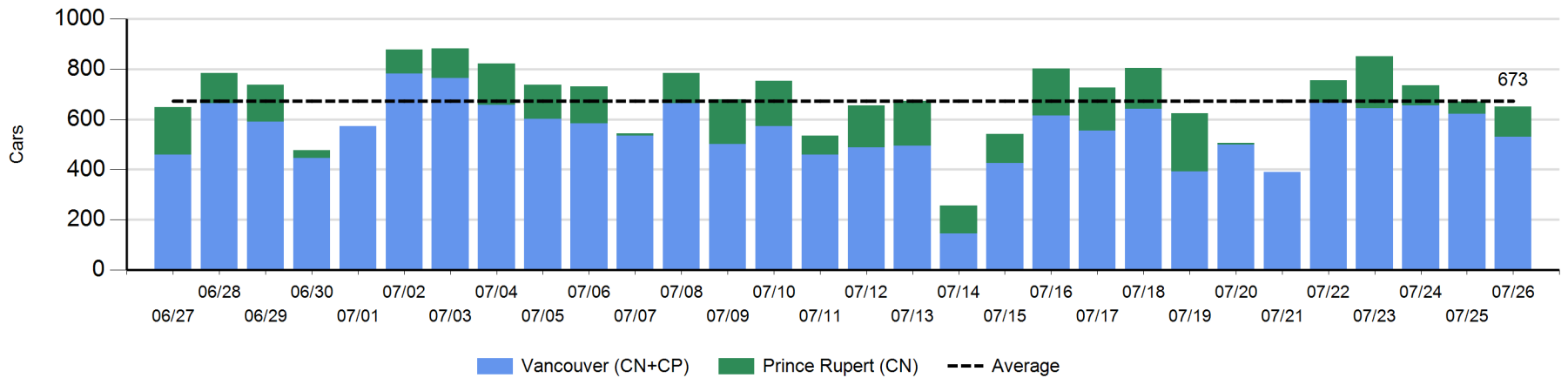
	E Canada	Prince Rupert	Thunder Bay	USA/MEX	Vancouver	Total
<b>CN</b>						
Origin	4	22	0	0	-207	-181
Enroute	-3	0	0	4	-7	-6
Destination	0	0	-12	-5	9	-8
	1	22	-12	-1	-205	-195
<b>CP</b>						
Origin	-23		-42	1	-112	-176
Enroute	-3		9	12	2	20
Destination	1		104	-2	-56	47
	-25		71	11	-166	-109
<b>US Rail / Short Line</b>						
Origin						
Enroute				-2		-2
Destination				-3	-1	-4
				-5	-1	-6



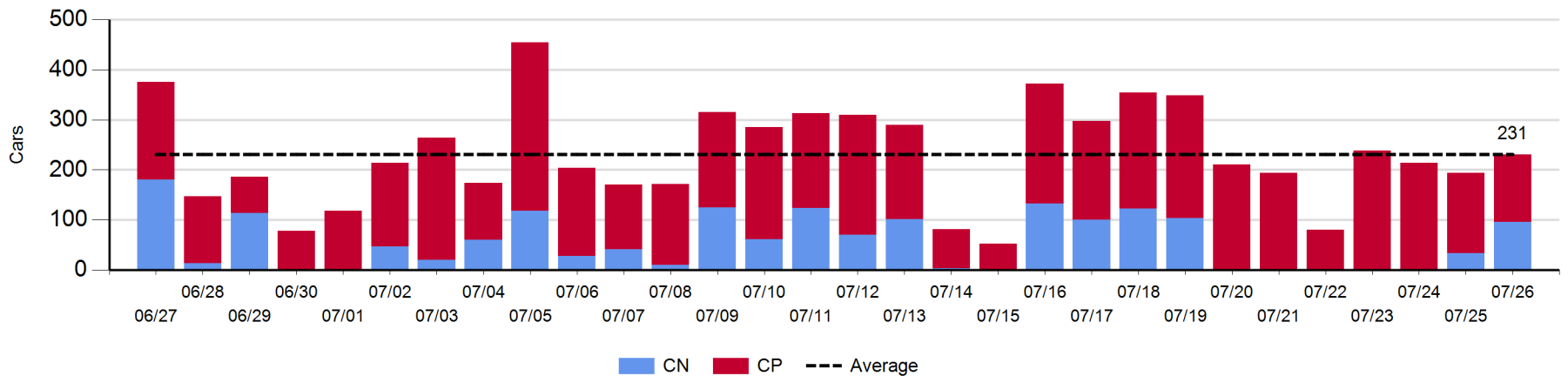
Port Unloads - 7/26/2018

	Prince Rupert	Vancouver	West Coast Total	Thunder Bay	Total
CN	120	321	441	96	537
CP		210	210	135	345
	120	531	651	231	882

West Coast Port Unloads - Prior 30 Days



Thunder Bay Port Unloads - Prior 30 Days





**Port Terminal Status**

**Vancouver**

Daily Activity for 7/26/2018

	Cars Arrived	Cars Received in Interchange	Cars Delivered in Interchange	Cars Placed for Unloading	Loads on Wheels at Destination As of 7/26/2018
CN	157	115		324	197
CP	341		115	178	290
SRY				9	14

**Port Unloads**

	07/26	07/25	Week To Date	Last Week
CN	321	392	1,564	2,299
CP	210	229	888	1,459
SRY	9		11	44

**Age Profile of Loaded Cars Waiting Placement for Unloading**

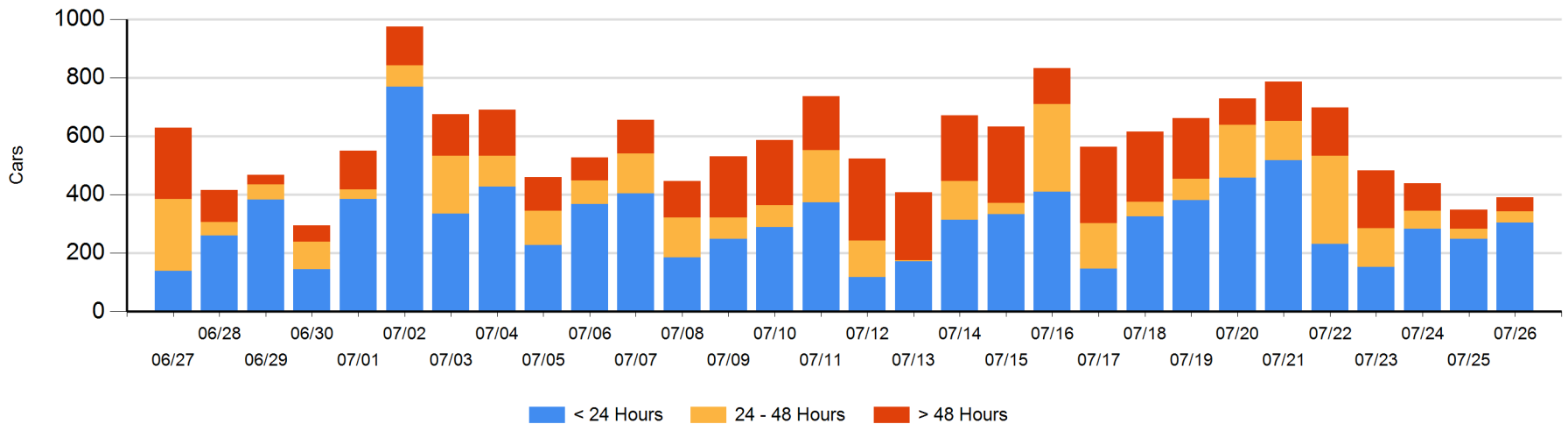
**Today**

	< 24 Hrs	24 - 48 Hrs	> 48-72 Hrs	> 72 Hrs	Total On Hand
CN	48	13	4	22	87
CP	257	24	15	8	304
SRY					0

**Change in Last 24 Hours**

	< 24 Hrs	24-48 Hrs	48 - 72 Hrs	> 72 Hrs
CN	-75	5	3	-20
CP	131	-3	5	-3
SRY				

**Loaded Cars on Hand Vancouver Waiting for Placement - Last 30 Days All Railways**



**Port Terminal Status**

**Prince Rupert**

Daily Activity for 7/26/2018

	Cars Arrived	Cars Received in Interchange	Cars Delivered in Interchange	Cars Placed for Unloading	Loads on Wheels at Destination As of 7/26/2018
CN	174			174	72

**Port Unloads**

	07/26	07/25	Week To Date	Last Week
CN	120	49	453	848

**Age Profile of Loaded Cars Waiting Placement for Unloading**

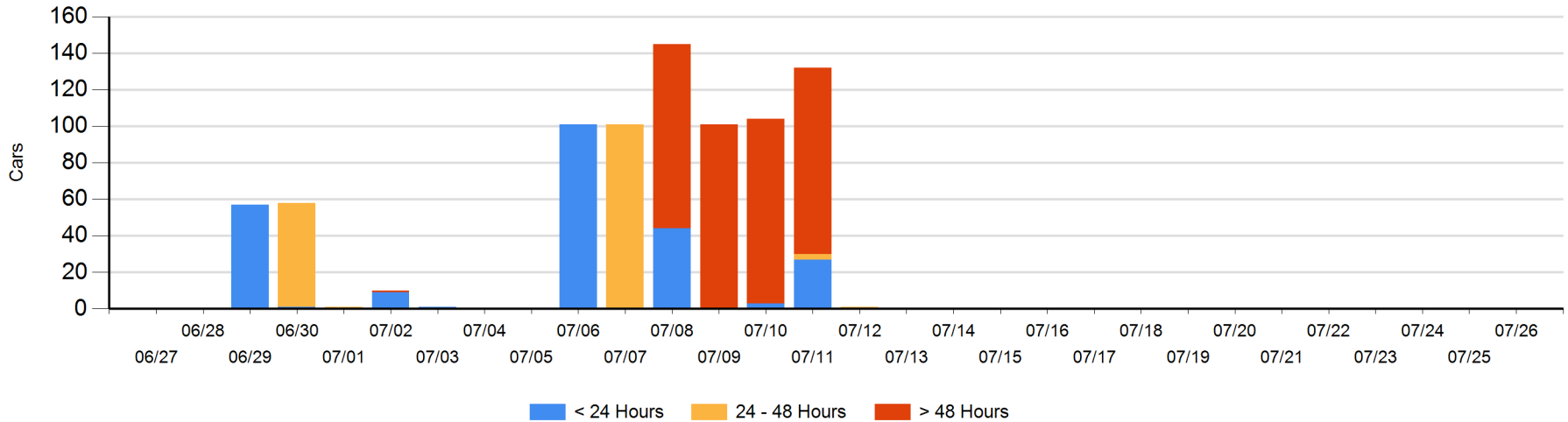
**Today**

	< 24 Hrs	24 - 48 Hrs	> 48-72 Hrs	> 72 Hrs	Total On Hand
CN					0

**Change in Last 24 Hours**

	< 24 Hrs	24-48 Hrs	48 - 72 Hrs	> 72 Hrs
CN				

Loaded Cars on Hand Prince Rupert Waiting for Placement - Last 30 Days All Railways



**Port Terminal Status**

**Thunder Bay**

Daily Activity for 7/26/2018

	Cars Arrived	Cars Received in Interchange	Cars Delivered in Interchange	Cars Placed for Unloading	Loads on Wheels at Destination As of 7/26/2018
CN	88			58	199
CP	219			138	531

**Port Unloads**

	07/26	07/25	Week To Date	Last Week
CN	96	33	129	460
CP	135	161	748	1,397

**Age Profile of Loaded Cars Waiting Placement for Unloading**

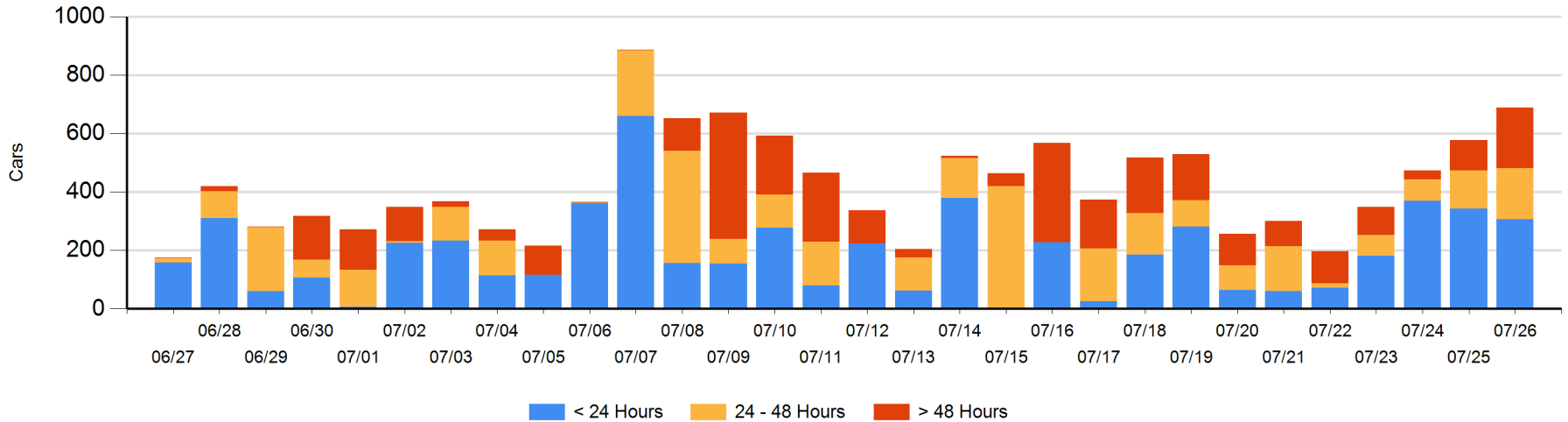
**Today**

	< 24 Hrs	24 - 48 Hrs	> 48-72 Hrs	> 72 Hrs	Total On Hand
CN	88	84	25		197
CP	219	91	90	92	492

**Change in Last 24 Hours**

	< 24 Hrs	24-48 Hrs	48 - 72 Hrs	> 72 Hrs
CN	-26	43	13	
CP	-10	1	29	61

**Loaded Cars on Hand Thunder Bay Waiting for Placement - Last 30 Days All Railways**



## Measurement Definitions

Loads on Wheels	<p>Count of loaded rail cars including all rail cars that have been released loaded at origin and have not been reported by the railway as unloaded at destination.</p> <p>Counts include all rail cars (hopper cars and boxcars) moving within a pipeline.</p>
Loads Not Moving	<p>Loaded rail cars for which the railways have not reported a movement event for 48 hours or more whether the rail car is at origin, enroute or at destination.</p>
Port Unloads	<p>Count of rail cars reported by railways as unloaded at the western port destinations of Vancouver, Prince Rupert and Thunder Bay.</p> <p>Unload counts include all rail cars (hopper cars and boxcars) unloaded by all receivers including major port terminals, transloaders and other receivers.</p>
Cars Arrived	<p>Count of rail cars reported as arrived at the destination railway terminal.</p>
Cars Received in Interchange	<p>Count of rail cars received in interchange by each railway within a destination railway terminal. Interchange activity is tracked for the Vancouver and Thunder Bay pipelines as applicable.</p>
Cars Delivered in Interchange	<p>Count of rail cars delivered in interchange by each railway within a destination railway terminal. Interchange activity is tracked for the Vancouver and Thunder Bay pipelines as applicable.</p>
Cars Placed for Unloading	<p>Count of rail cars reported by the railways as placed loaded at the receiver's facility for unloading.</p>
Loads on Wheels at Destination	<p>Count of rail cars that remain under load within the destination railway terminal including rail cars that have been reported as placed for unloading but not yet reported as unloaded.</p>
Waiting Placement for Unloading	<p>Count of rail cars that have been reported as arrived at the destination railway terminal but not reported as placed for unloading by the railway.</p> <p>For the Ports of Vancouver, Prince Rupert and Thunder Bay the count of rail cars waiting placement for unloading is categorized by age – i.e. the elapsed time from arrival at destination to the current report date.</p>