

Note to Reader

Prince Rupert unloads have been lower than normal for a number of weeks as a result of ongoing maintenance at the terminal which is reducing unload capacity. Over the last four weeks unloads have averaged 770 unloads although this reflects a consistent week over week decline from 950 four weeks ago to less than 500 last week. While unloads were anticipated to be reduced due to the ongoing maintenance work the last two weeks have seemingly fallen below expectations which is in part attributable to lower shipper demand in the Prince Rupert corridor during this time period - averaging 700 orders per week. Order volumes for Rupert have jumped almost 50% this week surpassing 1,000 for the first time in four weeks.

SPEED READ

- Loads on wheels declined by more than 700 cars overnight reflecting notable declines on both CN (-483) and CP (-396). The volume reduction was seen in all corridors led by Vancouver (-561). With the pending two month shutdown at Alliance Grain Terminal in Vancouver set to begin June 15 it is anticipated that loads on wheels in the Vancouver corridor will begin to decline in the coming days as shippers stop shipping to the terminal. Looking further out it is expected that unloads will begin to decline toward the tail end of this week.
- Loads on wheels fell below the 8,000 car threshold for the first time in four days.
- Network fluidity improved somewhat for CN overnight while CP counts increased. Prior to this most recent increase CP counts had dropped steadily for six consecutive days from a high of 1,200 to below 500 cars.
- Week 45 unloads remained strong through the balance of the week finishing more than 700 unloads higher than the prior week. This overall improvement reflects improved performance at Thunder Bay and Vancouver while Prince Rupert unloads came in some 45% below the prior week.
- While the current inbound pipeline for Prince Rupert would suggest the potential for improved unload performance this week with only 250 cars west of Edmonton unloads may be challenged somewhat in the middle part of the week.
- Thunder Bay and Vancouver pipelines continue to appear robust which should support strong unloads to begin this week.

=====

Loads on Wheels

- Loads on wheels declined by 9% (742 cars) overnight reflecting declines on both CN (-483) and CP (-396) offset by higher volumes on US carriers for traffic previously interchanged from CN and CP - now at 7,768 and 9% below the trailing 30 day average
- On a net basis the decline in loads on wheels reflects declines in all corridors led by Vancouver (-561).
- CN volumes decreased 10% (483 cars) reflecting lower volumes in 4 of 5 corridors most prominently lower Vancouver volumes. System wide CN loads on wheels now at 4,116 - above the 4,000 car threshold for the fourth consecutive day and in line with the trailing 30 day average.
- CP volumes also declined 10% (396 cars) overnight reflecting lower volumes in the Vancouver and US corridors. CP system wide loads on wheels now at 3,360 - 20% below the trailing 30 day average.
- Vancouver now at 4,225 - the lowest level in two weeks and 18% below the trailing 30 day average.
- The Prince Rupert pipeline currently sits at 868 - 2% above the trailing 30 day average.
- Thunder Bay volumes declined slightly overnight but remain above the 1,300 car threshold and 23% above the trailing 30 day average with 70% of traffic moving on CP

Hopper Car Rationing

- No hopper car rationing has been reported for either CN or CP in week 44 and none expected in week 45.

Loads Not Moving

- **The count of cars not moving for 48+ hours rose overnight reflecting lower counts on CN and higher counts on CP. The count of idle cars now stands at 1,275.**
- CN
 - **The count of idle cars declined slightly overnight (71 cars) - idle car counts now at 488 with 80% of these cars idle for 2 - 4 days.**
 - The number of cars idle for 4+ days fell 60% overnight on the heels of two days of increasing counts - now below 100 cars.
 - The count of cars not moving for 7+ days unchanged overnight - remains below 40 cars.
 - Vancouver represents 67% of all idle cars.
- CP
 - **CP counts rose overnight (350 cars). This is the first time in a week that the count of idle cars has increased on CP. The count of idle cars on CP now at 787.**
 - The number of cars idle for 4+ days up slightly overnight but at 177 cars is at half the levels seen two days ago.
 - The count of cars idle for 7+ days unchanged overnight - now just above 100 cars, down 60% from the near 400 cars three days ago.
 - Vancouver continues to account for the majority of all idle cars (53%) with the balance accounted for by the Thunder Bay and US corridors.
 - In total 89% of all idle cars are dwelling at origin locations.

Port Performance

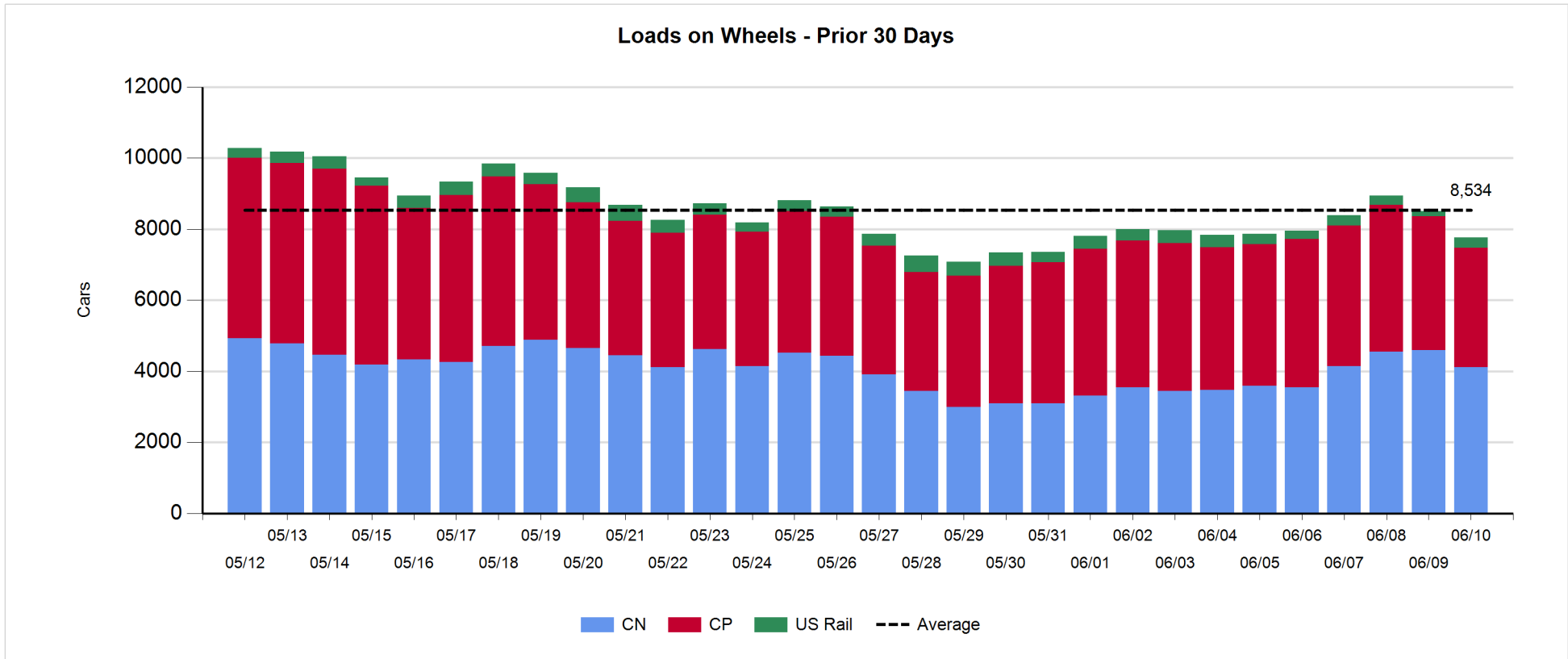
- CN and CP reported a total of 776 cars unloaded at the three western ports - below the 1,000 car mark for the second consecutive day. Week 45 unloads at just above 6,800 cars exceeded the prior week's performance by more than 700 unloads reflecting stronger week over week performance at Thunder Bay and Vancouver.
- Vancouver
 - 632 cars reported unloaded by CN and CP at the Port of Vancouver; CN - 282 and CP - 350.
 - There are 650+ cars on hand at Vancouver waiting placement for unloading with 650+ cars arriving at the port in the last 24 hours.
 - CN and CP have 1,000+ cars enroute to Vancouver west of Alberta - 400+ Kamloops and west - with 70% of traffic currently moving on CN.
- Prince Rupert
 - Prince Rupert unloads finished the week less robustly than anticipated ending the week with fewer than 500 unloads about 45% lower than the prior week.
 - Loads on wheels at 868 - down slightly since yesterday.
 - There are 250+ cars west of Jasper - 180 Prince George and west.
 - While the pipeline is near the highest levels seen in the prior two weeks beyond the cars currently moving west of Jasper there are no cars west of Edmonton which calls into question the level of unloads that can be anticipated in the middle part of week 46.
- Thunder Bay
 - Week 45 unloads at more than 1,700 finished the week 50% higher than the prior week.
 - There are 600 cars on site at Thunder Bay with 250+ cars arriving at the Port in the prior 24 hours.
 - There are now 600 cars enroute to Thunder Bay - 400 Winnipeg and east. Given the number of cars on hand and the proximity of inbound cars the Port remains well positioned for strong unload performance to begin Week 46.

Daily Loads on Wheels - 6/10/2018

	E Canada	Prince Rupert	Thunder Bay	USA/MEX	Vancouver	Total
CN	289	868	402	93	2,464	4,116
CP	76		950	593	1,741	3,360
Short Line	1				20	21
US Rail				271		271
	366	868	1,352	957	4,225	7,768

Change in Loads on Wheels - Prior 24 Hours

	E Canada	Prince Rupert	Thunder Bay	USA/MEX	Vancouver	Total
CN	-29	-68	0	-22	-364	-483
CP	0		-60	-145	-191	-396
Short Line	0				-6	-6
US Rail				143		143
	-29	-68	-60	-24	-561	-742

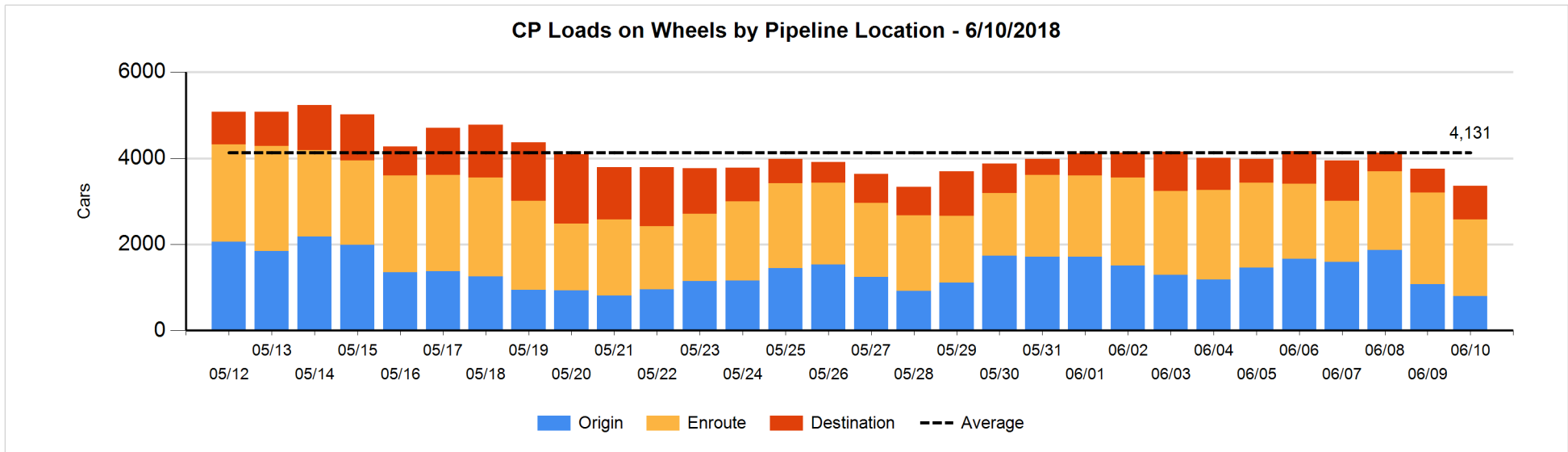
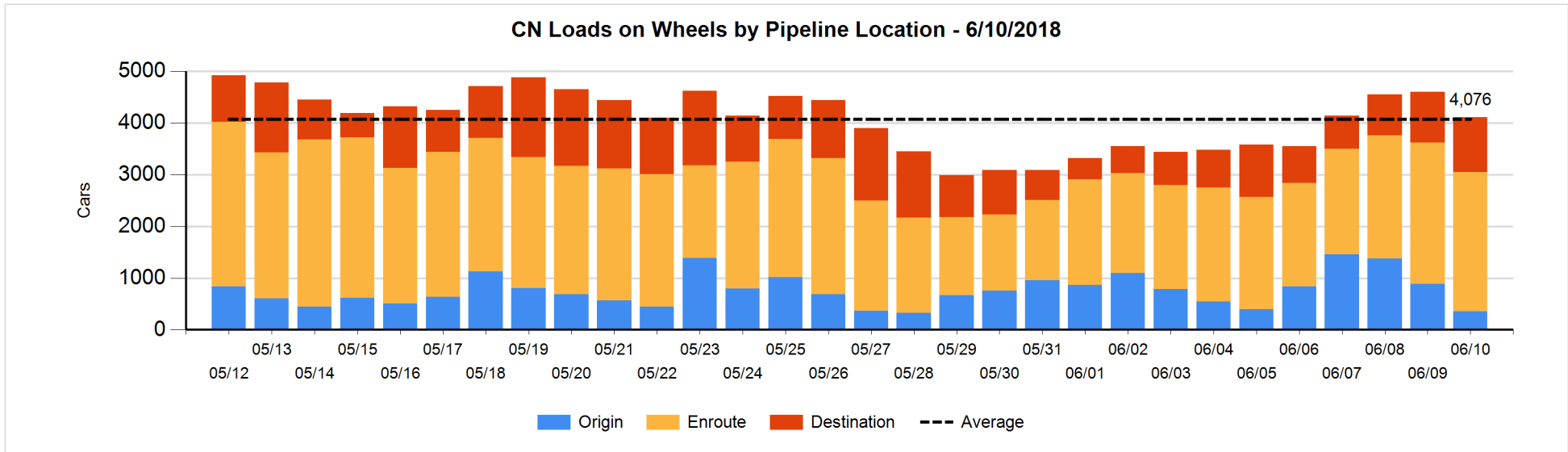


Daily Loads on Wheels By Pipeline Location - 6/10/2018

	E Canada	Prince Rupert	Thunder Bay	USA/MEX	Vancouver	Total
CN						
Origin	50			2	304	356
Enroute	178	830	176	76	1,432	2,692
Destination	61	38	226	15	728	1,068
	289	868	402	93	2,464	4,116
CP						
Origin	1		222	139	442	804
Enroute	73		406	269	1,025	1,773
Destination	2		322	185	274	783
	76		950	593	1,741	3,360
US Rail / Short Line						
Origin						
Enroute				189		189
Destination	1			82	20	103
	1			271	20	292

Change in Daily Loads on Wheels By Pipeline Location - Prior 24 Hours

	E Canada	Prince Rupert	Thunder Bay	USA/MEX	Vancouver	Total
CN						
Origin	0	-200	-100	-34	-199	-533
Enroute	-54	197	20	34	-239	-42
Destination	25	-65	80	-22	74	92
	-29	-68	0	-22	-364	-483
CP						
Origin	0		-26	0	-243	-269
Enroute	0		-145	-285	74	-356
Destination	0		111	140	-22	229
	0		-60	-145	-191	-396
US Rail / Short Line						
Origin						
Enroute				117		117
Destination	0			26	-6	20
	0			143	-6	137

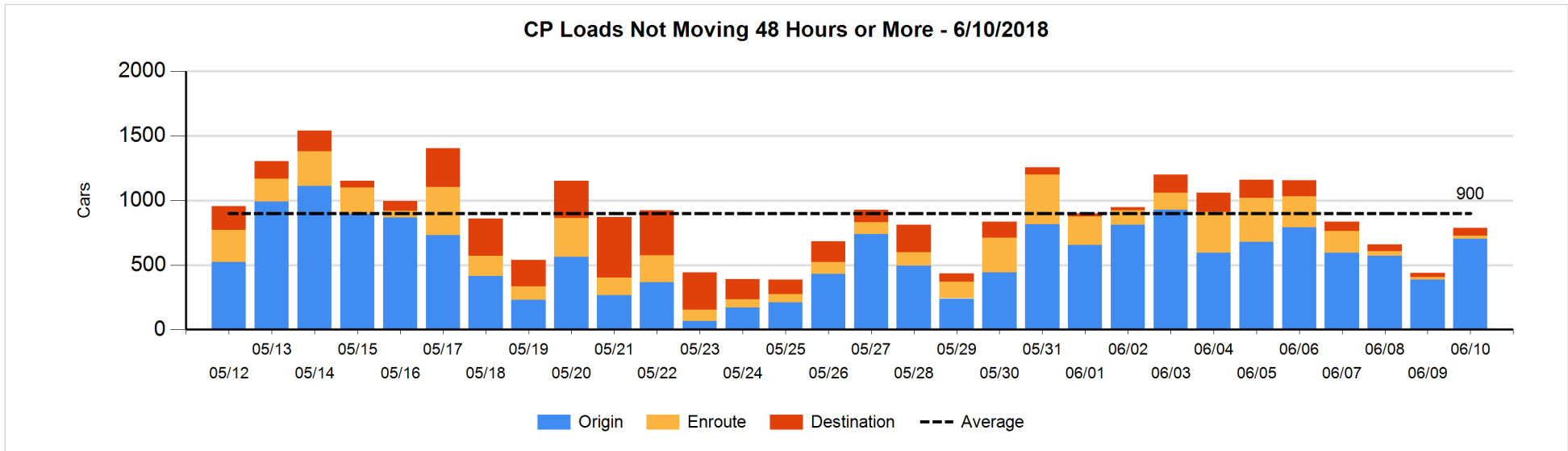
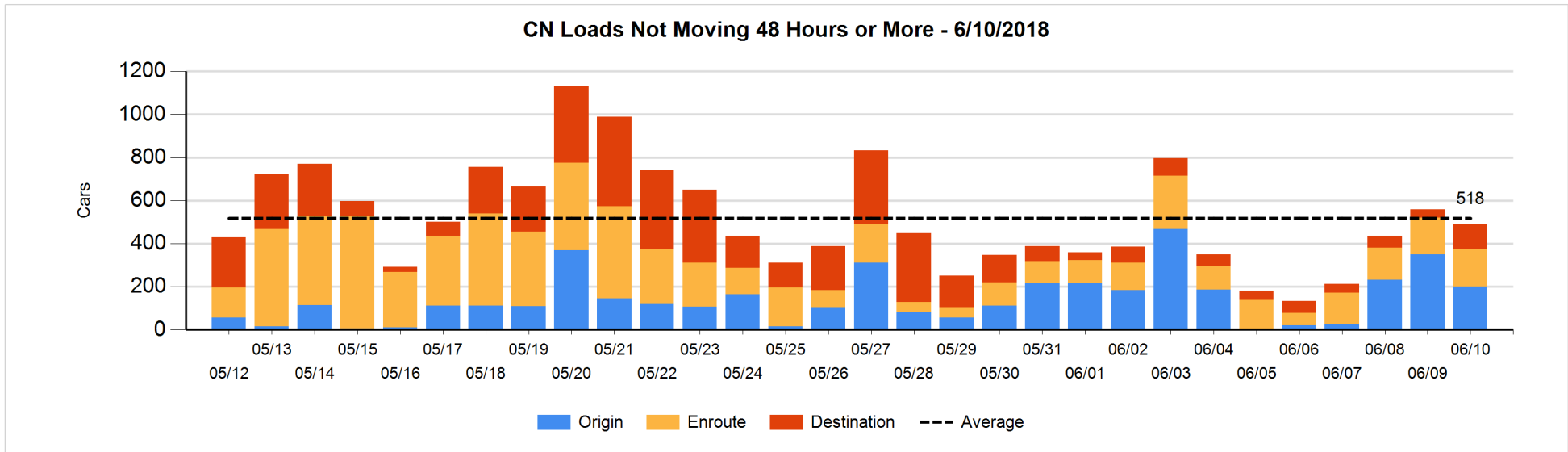


Loads Not Moving 48 Hours or More - 6/10/2018

	E Canada	Prince Rupert	Thunder Bay	USA/MEX	Vancouver	Total
CN						
Origin	1			2	198	201
Enroute	69	51		12	40	172
Destination	6		3	15	91	115
	76	51	3	29	329	488
CP						
Origin	1		222	114	365	702
Enroute	15		5	2	3	25
Destination	2		3	6	49	60
	18		230	122	417	787
US Rail / Short Line						
Origin						
Enroute				24		24
Destination	1			29	9	39
	1			53	9	63

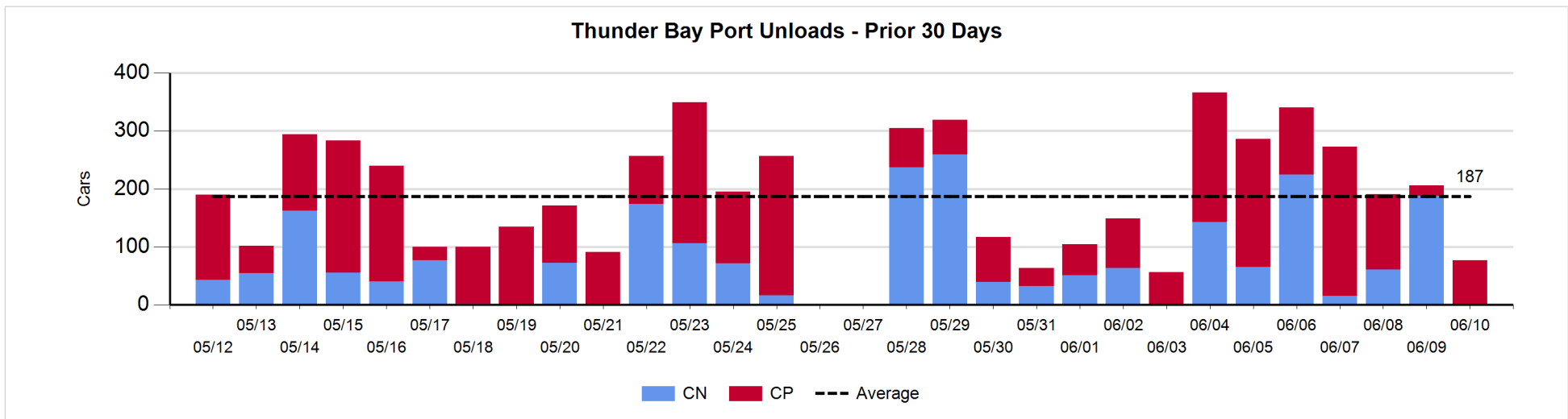
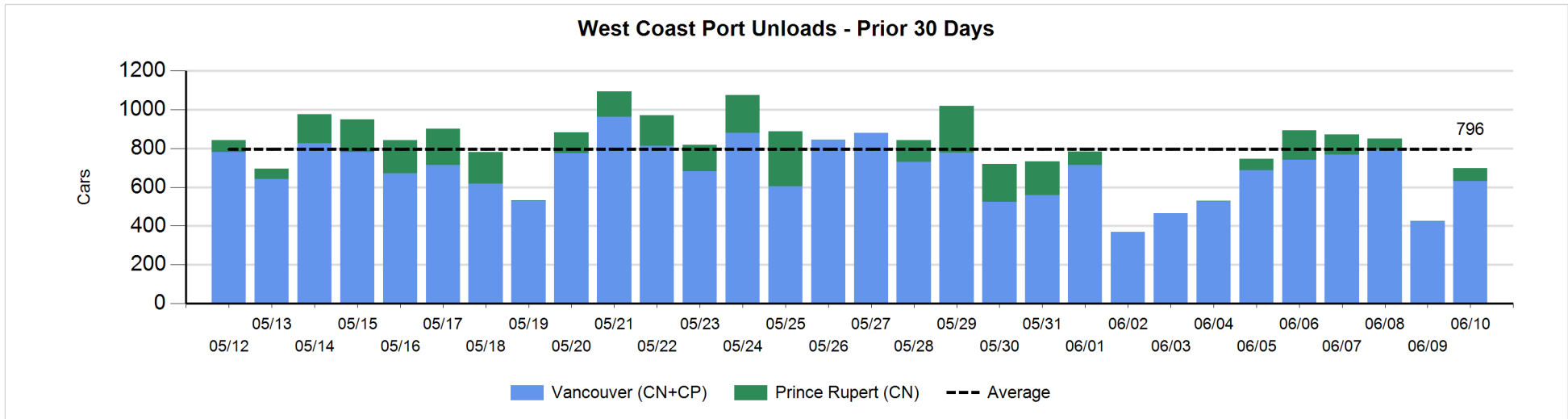
Change in Loads Not Moving 48 Hours or More - 6/10/2018

	E Canada	Prince Rupert	Thunder Bay	USA/MEX	Vancouver	Total
CN						
Origin	1	-100		-33	-17	-149
Enroute	62	50		0	-111	1
Destination	3	-10	3	5	76	77
	66	-60	3	-28	-52	-71
CP						
Origin	0		196	71	49	316
Enroute	1		4	-1	0	4
Destination	0		1	-15	44	30
	1		201	55	93	350
US Rail / Short Line						
Origin						
Enroute				5		5
Destination	0			2	-9	-7
	0			7	-9	-2



Port Unloads - 6/10/2018

	Prince Rupert	Vancouver	West Coast Total	Thunder Bay	Total
CN	67	282	349		349
CP		350	350	77	427
	67	632	699	77	776



Port Terminal Status

Vancouver

Daily Activity for 6/10/2018

	Cars Arrived	Cars Received in Interchange	Cars Delivered in Interchange	Cars Placed for Unloading	Loads on Wheels at Destination As of 6/10/2018
CN	446	4	107	238	728
CP	232	102	4	351	274
SRY		5			20

Port Unloads

	06/10	06/09	Week To Date	Last Week
CN	282	174	2,649	1,997
CP	350	249	1,924	2,142
SRY	5	2	54	44

Age Profile of Loaded Cars Waiting Placement for Unloading

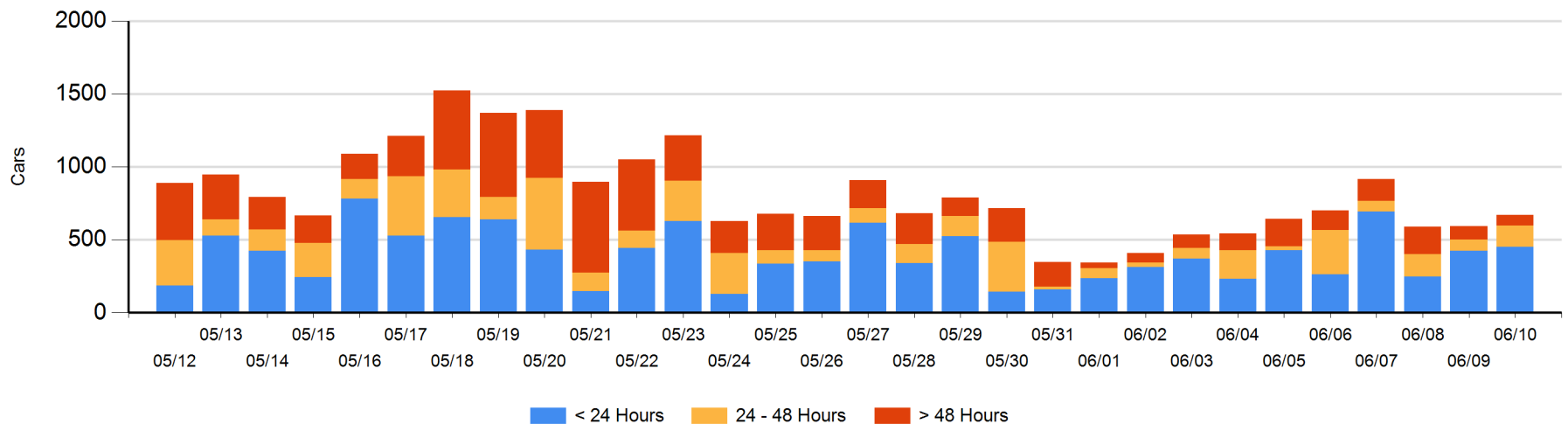
Today

	< 24 Hrs	24 - 48 Hrs	> 48-72 Hrs	> 72 Hrs	Total On Hand
CN	388	81	15	9	493
CP	63	67	2	47	179
SRY					0

Change in Last 24 Hours

	< 24 Hrs	24-48 Hrs	48 - 72 Hrs	> 72 Hrs
CN	312	44	2	7
CP	-285	26	-55	28
SRY				

Loaded Cars on Hand Vancouver Waiting for Placement - Last 30 Days All Railways



Port Terminal Status

Prince Rupert

Daily Activity for 6/10/2018

	Cars Arrived	Cars Received in Interchange	Cars Delivered in Interchange	Cars Placed for Unloading	Loads on Wheels at Destination As of 6/10/2018
CN				1	38

Port Unloads

	06/10	06/09	Week To Date	Last Week
CN	67	2	437	788

Age Profile of Loaded Cars Waiting Placement for Unloading

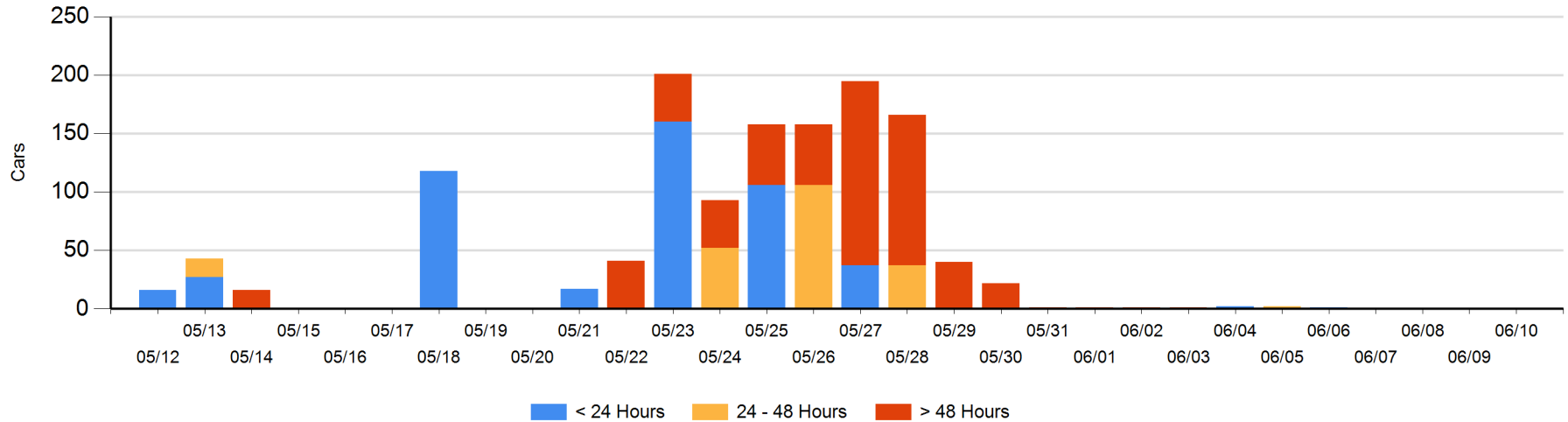
Today

	< 24 Hrs	24 - 48 Hrs	> 48-72 Hrs	> 72 Hrs	Total On Hand
CN					0

Change in Last 24 Hours

	< 24 Hrs	24-48 Hrs	48 - 72 Hrs	> 72 Hrs
CN				

Loaded Cars on Hand Prince Rupert Waiting for Placement - Last 30 Days All Railways



Port Terminal Status

Thunder Bay

Daily Activity for 6/10/2018

	Cars Arrived	Cars Received in Interchange	Cars Delivered in Interchange	Cars Placed for Unloading	Loads on Wheels at Destination As of 6/10/2018
CN	80			48	226
CP	188			77	322

Port Unloads

	06/10	06/09	Week To Date	Last Week
CN		188	697	681
CP	77	18	1,042	432

Age Profile of Loaded Cars Waiting Placement for Unloading

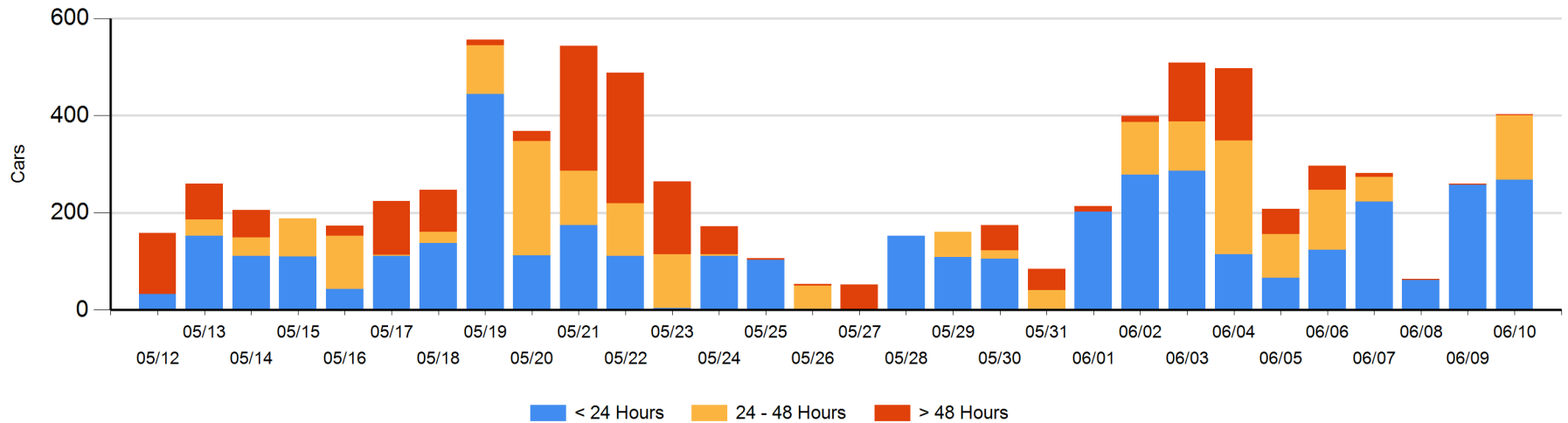
Today

	< 24 Hrs	24 - 48 Hrs	> 48-72 Hrs	> 72 Hrs	Total On Hand
CN	80	94			174
CP	188	39		2	229

Change in Last 24 Hours

	< 24 Hrs	24-48 Hrs	48 - 72 Hrs	> 72 Hrs
CN	-62	94		
CP	72	39		0

Loaded Cars on Hand Thunder Bay Waiting for Placement - Last 30 Days All Railways



Measurement Definitions

Loads on Wheels	<p>Count of loaded rail cars including all rail cars that have been released loaded at origin and have not been reported by the railway as unloaded at destination.</p> <p>Counts include all rail cars (hopper cars and boxcars) moving within a pipeline.</p>
Loads Not Moving	<p>Loaded rail cars for which the railways have not reported a movement event for 48 hours or more whether the rail car is at origin, enroute or at destination.</p>
Port Unloads	<p>Count of rail cars reported by railways as unloaded at the western port destinations of Vancouver, Prince Rupert and Thunder Bay.</p> <p>Unload counts include all rail cars (hopper cars and boxcars) unloaded by all receivers including major port terminals, transloaders and other receivers.</p>
Cars Arrived	<p>Count of rail cars reported as arrived at the destination railway terminal.</p>
Cars Received in Interchange	<p>Count of rail cars received in interchange by each railway within a destination railway terminal. Interchange activity is tracked for the Vancouver and Thunder Bay pipelines as applicable.</p>
Cars Delivered in Interchange	<p>Count of rail cars delivered in interchange by each railway within a destination railway terminal. Interchange activity is tracked for the Vancouver and Thunder Bay pipelines as applicable.</p>
Cars Placed for Unloading	<p>Count of rail cars reported by the railways as placed loaded at the receiver's facility for unloading.</p>
Loads on Wheels at Destination	<p>Count of rail cars that remain under load within the destination railway terminal including rail cars that have been reported as placed for unloading but not yet reported as unloaded.</p>
Waiting Placement for Unloading	<p>Count of rail cars that have been reported as arrived at the destination railway terminal but not reported as placed for unloading by the railway.</p> <p>For the Ports of Vancouver, Prince Rupert and Thunder Bay the count of rail cars waiting placement for unloading is categorized by age – i.e. the elapsed time from arrival at destination to the current report date.</p>