

Note to Reader

Prince Rupert unloads have been lower than normal for a number of weeks as a result of ongoing maintenance at the terminal which is reducing unload capacity. Over the last four weeks unloads have averaged 770 unloads although this reflects a consistent week over week decline from 950 four weeks ago to less than 500 last week. While unloads were anticipated to be reduced due to the ongoing maintenance work the last two weeks have seemingly fallen below expectations which is in part attributable to lower shipper demand in the Prince Rupert corridor during this time period - averaging 700 orders per week. Order volumes for Rupert have jumped almost 50% this week surpassing 1,000 for the first time in four weeks.

SPEED READ

- Loads on wheels increased slightly for the second straight day. The uptick on volumes was led by CN with all of the increase for both railways seen in the Vancouver corridor while volumes in all other corridors declined marginally.
- Alliance Grain Terminal in Vancouver is set to begin a two month shutdown tomorrow (June 15).
- Network fluidity deteriorated overnight for both CN and CP with the count of idle cars increasing by more than 400 cars. The majority of the increase was seen on CN where counts more than doubled with 75% of the increase seen in the Vancouver corridor. Overall at 950 cars counts remain approximately 30% lower than the daily average of 1,300 cars over the course of the last 30 days.
- Week 46 unloads continue to track at last week's pace three days in.
- Prince Rupert saw its best unloading performance in two weeks with nearly 200 unloads reported for yesterday. The Port continues to be well positioned for unloads in the 150+ range over the next 3 - 4 days.
- Thunder Bay and Vancouver pipelines remain robust which should support strong unloads for the next few days particularly at Thunder Bay.

=====

Loads on Wheels

- Loads on wheels rose nominally overnight for the second consecutive day. The slight increase reflects increases on both CN (+131) and CP (+46) - now at 7,755 and 7% below the trailing 30 day average
- On a net basis the increase in loads on wheels reflects higher volumes in the Vancouver (+337) corridor with lower volumes in all other corridors.
- CN volumes rose nominally (131 cars) reflecting higher volumes in the Vancouver corridor and declines in all other corridors. System wide CN loads on wheels now at 4,675 and 5% above the trailing 30 day average.
- CP volumes also rose although only slightly overnight as with CN reflecting an increase in the Vancouver corridor and lower volumes in all other corridors. CP system wide loads on wheels now at 3,256 - 18% below the trailing 30 day average.
- Vancouver now at 4,675 - 5% below the trailing 30 day average.
- The Prince Rupert pipeline currently sits at 926 - little change overnight and 10% above the trailing 30 day average.
- Thunder Bay volumes declined for the fifth consecutive day remaining below the 1,100 car threshold and in line with the trailing 30 day average with 80% of traffic moving on CP

Hopper Car Rationing

- No hopper car rationing has been reported for either CN or CP in week 44 and none expected in week 45.

Loads Not Moving

- The count of cars not moving for 48+ hours increased 75% (411 cars) overnight reflecting increases on both railways with the most significant

increase seen on CN. The count of idle cars now stands at 953.

- CN
 - **The count of idle cars more than doubled overnight (+346 cars) - idle car counts now at 652 - the highest level in 10 days.**
 - The number of cars idle for 4+ days down slightly overnight - remains below 100 cars.
 - The count of cars not moving for 7+ days down marginally - remains below 50 cars.
 - Vancouver represents 75% of all idle cars.

- CP
 - **CP counts increased slightly (+65 cars) overnight. CP counts remain at the second lowest level in more than 30 days. The count of idle cars on CP now at 301.**
 - The number of cars idle for 4+ days down slightly overnight - remains below 150 cars.
 - The count of cars idle for 7+ days up marginally overnight - remains below 50 cars.
 - Vancouver accounts for only 15% of all idle cars.
 - In total 57% of all idle cars are dwelling at origin locations.

Port Performance

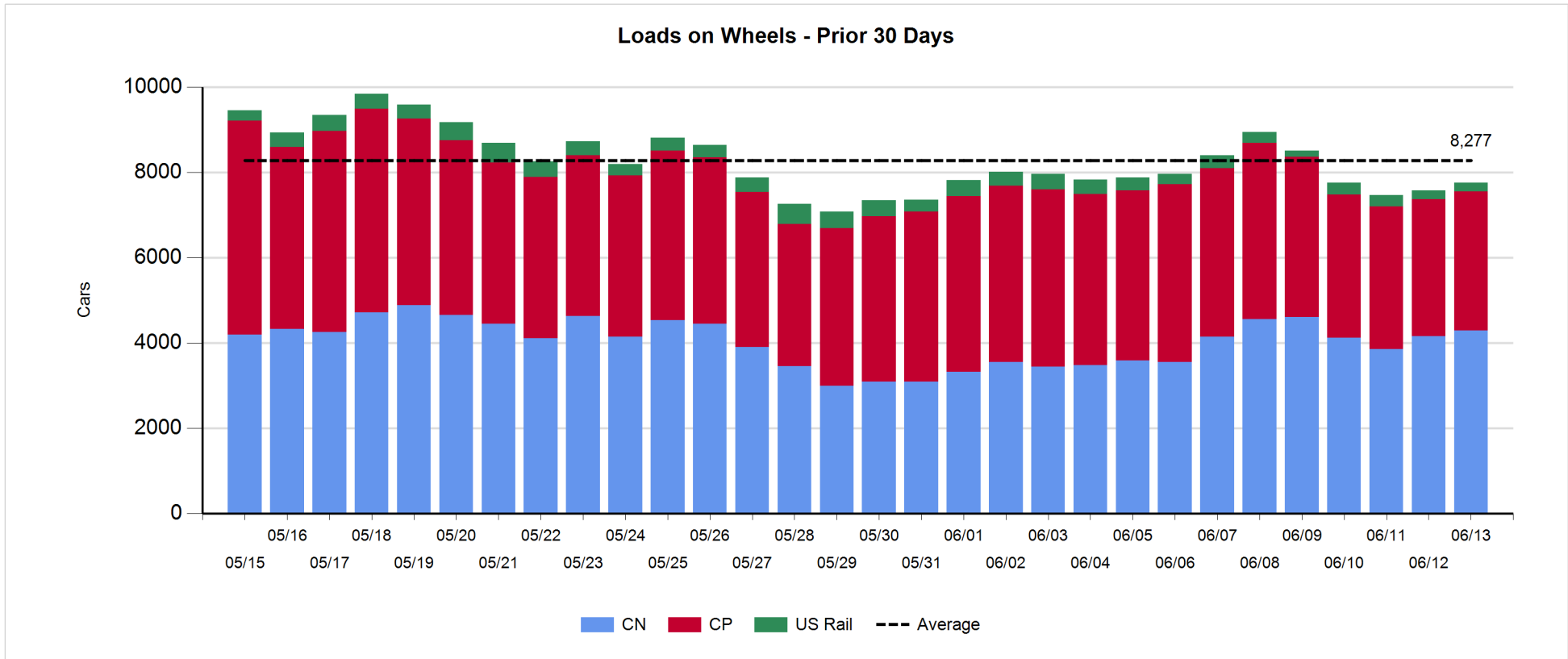
- CN and CP reported a total of 1,184 cars unloaded at the three western ports - above the 1,000 car mark for the second consecutive day. Three days in Week 46 unloads continue to track at last week's pace.
- Vancouver
 - 659 cars reported unloaded by CN and CP at the Port of Vancouver; CN - 314 and CP - 345.
 - There are nearly 650+ cars on hand at Vancouver waiting placement for unloading with only 300+ cars arriving at the port in the last 24 hours.
 - CN and CP have 850 cars enroute to Vancouver west of Alberta - 250 Kamloops and west - with 60% of traffic currently moving on CP.
- Prince Rupert
 - Prince Rupert saw its best day of unloads in two weeks yesterday reporting nearly 200 unloads and are currently tracking more than 150 unloads ahead of last week's pace after three days.
 - Loads on wheels at 926 - down slightly from yesterday.
 - There are 195 cars west of Jasper - nearly all Prince George and west.
 - With nearly 300 cars on site and the proximity of inbound cars to the Port it is expected that the Port is well positioned to maintain a pace of 150+ unloads a day for the next 3-4 days assuming no disruptions in unloading and the timely movement of cars currently enroute.
- Thunder Bay
 - 300+ unloads reported at Thunder Bay yesterday resulting in Week 46 unloads continuing to trail last week's pace by almost 150 unloads through the first three days of the week.
 - There are 600+ cars on site at Thunder Bay with 500+ cars arriving at the Port in the prior 24 hours.
 - There are now fewer than 150 cars enroute to Thunder Bay - all Winnipeg and east moving on CP. Given the number of cars on hand and the proximity of inbound cars the Port remains well positioned for strong unload performance over the next few days.

Daily Loads on Wheels - 6/13/2018

| | E Canada | Prince Rupert | Thunder Bay | USA/MEX | Vancouver | Total |
|------------|----------|---------------|-------------|---------|-----------|-------|
| CN | 231 | 926 | 203 | 121 | 2,806 | 4,287 |
| CP | 78 | | 874 | 476 | 1,828 | 3,256 |
| Short Line | 3 | | | | 41 | 44 |
| US Rail | | | | 168 | | 168 |
| | 312 | 926 | 1,077 | 765 | 4,675 | 7,755 |

Change in Loads on Wheels - Prior 24 Hours

| | E Canada | Prince Rupert | Thunder Bay | USA/MEX | Vancouver | Total |
|------------|----------|---------------|-------------|---------|-----------|-------|
| CN | -41 | -25 | -8 | -5 | 210 | 131 |
| CP | -9 | | -24 | -55 | 134 | 46 |
| Short Line | -12 | | | | -7 | -19 |
| US Rail | | | | 30 | | 30 |
| | -62 | -25 | -32 | -30 | 337 | 188 |

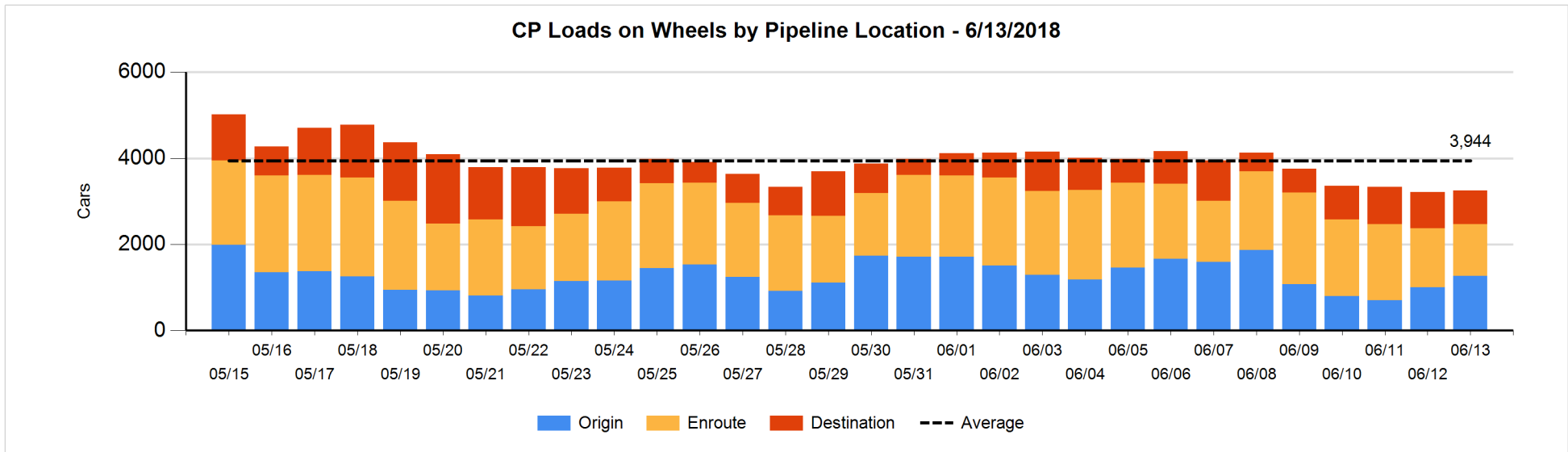
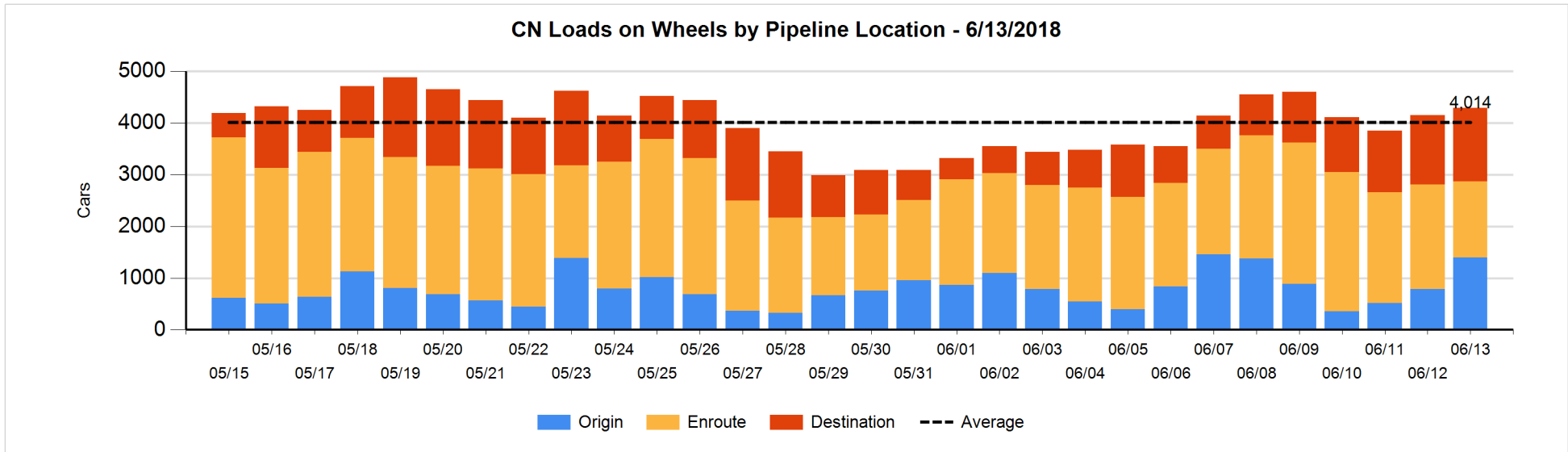


Daily Loads on Wheels By Pipeline Location - 6/13/2018

| | E Canada | Prince Rupert | Thunder Bay | USA/MEX | Vancouver | Total |
|----------------------|----------|---------------|-------------|---------|-----------|-------|
| CN | | | | | | |
| Origin | 26 | 269 | 47 | 25 | 1,032 | 1,399 |
| Enroute | 201 | 369 | | 89 | 815 | 1,474 |
| Destination | 4 | 288 | 156 | 7 | 959 | 1,414 |
| | 231 | 926 | 203 | 121 | 2,806 | 4,287 |
| CP | | | | | | |
| Origin | 23 | | 307 | 129 | 803 | 1,262 |
| Enroute | 21 | | 119 | 278 | 793 | 1,211 |
| Destination | 34 | | 448 | 69 | 232 | 783 |
| | 78 | | 874 | 476 | 1,828 | 3,256 |
| US Rail / Short Line | | | | | | |
| Origin | | | | | | |
| Enroute | | | | 119 | | 119 |
| Destination | 3 | | | 49 | 41 | 93 |
| | 3 | | | 168 | 41 | 212 |

Change in Daily Loads on Wheels By Pipeline Location - Prior 24 Hours

| | E Canada | Prince Rupert | Thunder Bay | USA/MEX | Vancouver | Total |
|----------------------|----------|---------------|-------------|---------|-----------|-------|
| CN | | | | | | |
| Origin | 0 | 67 | 47 | 4 | 498 | 616 |
| Enroute | -18 | -264 | -138 | -6 | -121 | -547 |
| Destination | -23 | 172 | 83 | -3 | -167 | 62 |
| | -41 | -25 | -8 | -5 | 210 | 131 |
| CP | | | | | | |
| Origin | 1 | | 162 | -100 | 197 | 260 |
| Enroute | -42 | | -274 | 21 | 138 | -157 |
| Destination | 32 | | 88 | 24 | -201 | -57 |
| | -9 | | -24 | -55 | 134 | 46 |
| US Rail / Short Line | | | | | | |
| Origin | | | | | | |
| Enroute | | | | 31 | | 31 |
| Destination | -12 | | | -1 | -7 | -20 |
| | -12 | | | 30 | -7 | 11 |

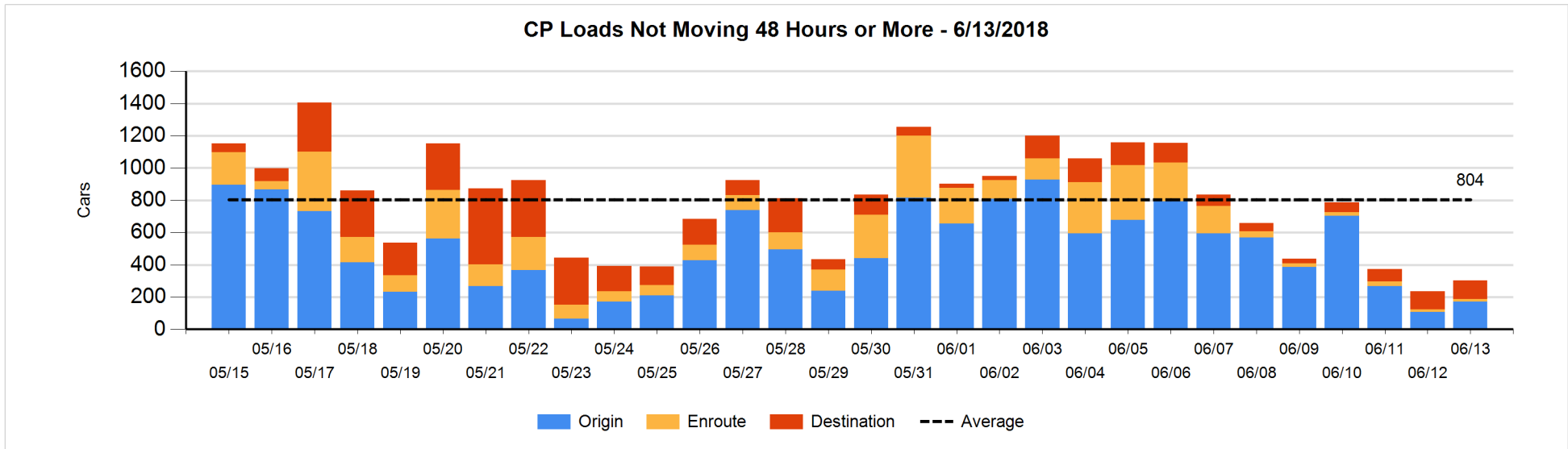
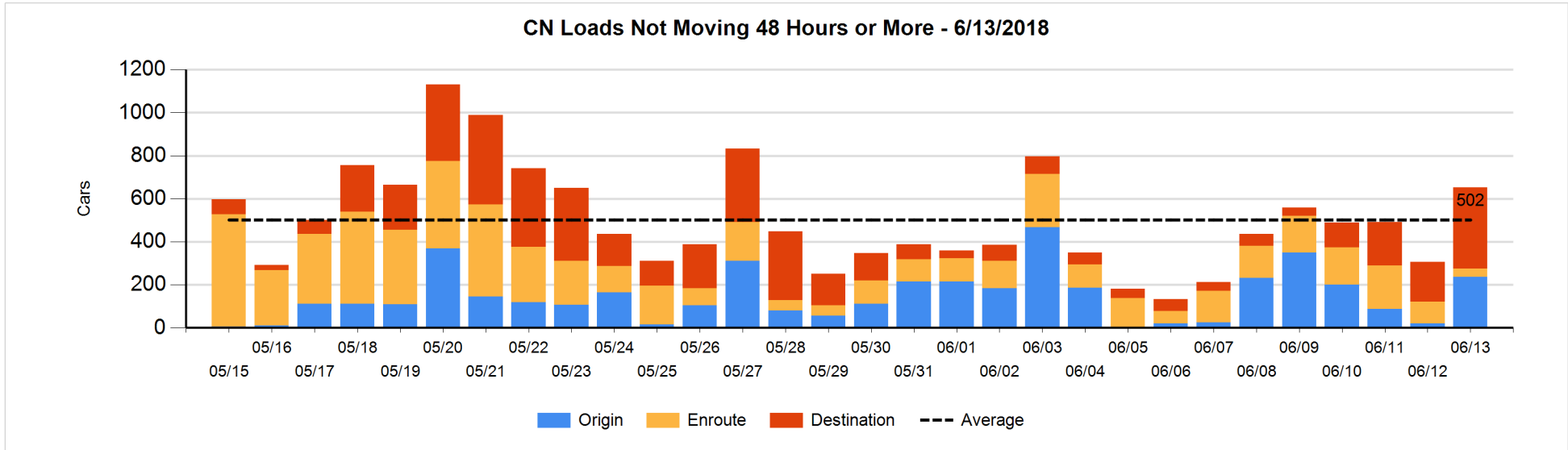


Loads Not Moving 48 Hours or More - 6/13/2018

| | E Canada | Prince Rupert | Thunder Bay | USA/MEX | Vancouver | Total |
|-----------------------------|----------|---------------|-------------|---------|-----------|-------|
| CN | | | | | | |
| Origin | | 103 | | 9 | 124 | 236 |
| Enroute | 12 | 1 | | 10 | 17 | 40 |
| Destination | 2 | | 16 | 3 | 355 | 376 |
| | 14 | 104 | 16 | 22 | 496 | 652 |
| CP | | | | | | |
| Origin | 22 | | 33 | 94 | 23 | 172 |
| Enroute | 4 | | 5 | 4 | 2 | 15 |
| Destination | 2 | | 62 | 28 | 22 | 114 |
| | 28 | | 100 | 126 | 47 | 301 |
| US Rail / Short Line | | | | | | |
| Origin | | | | | | |
| Enroute | | | | 22 | | 22 |
| Destination | 1 | | | 23 | 3 | 27 |
| | 1 | | | 45 | 3 | 49 |

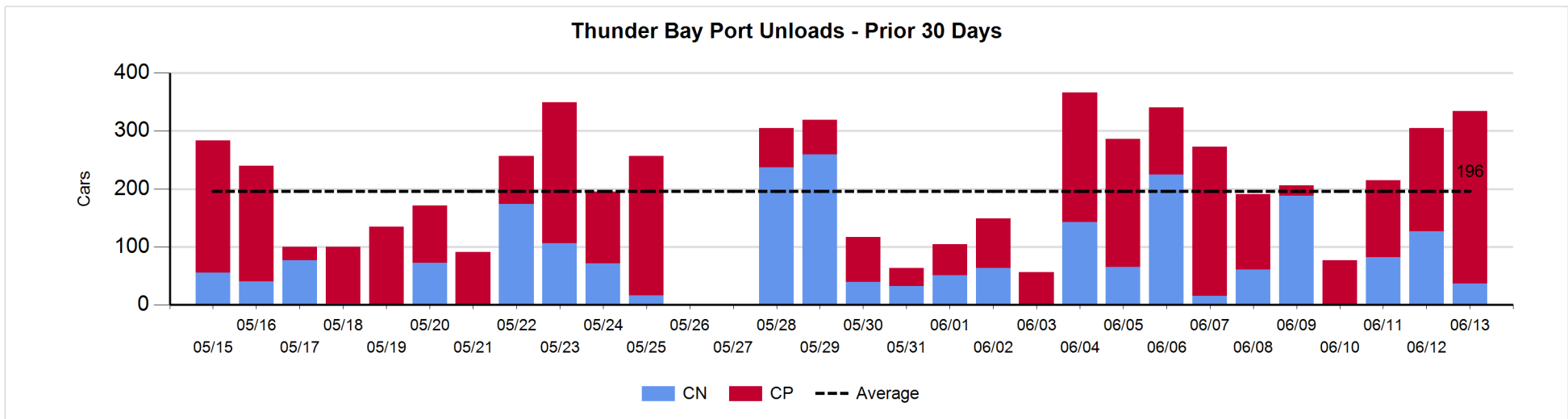
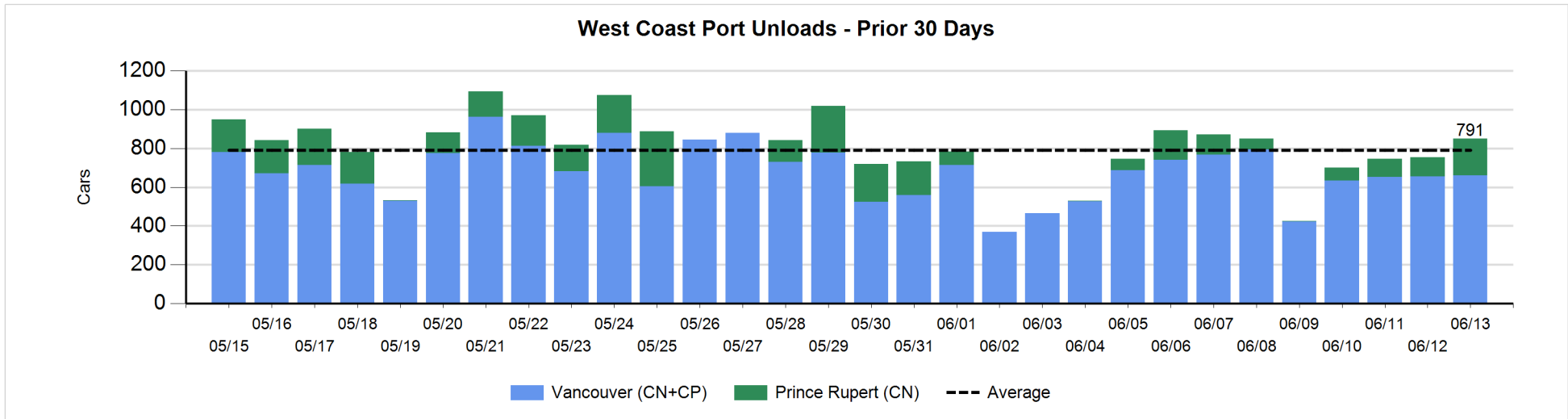
Change in Loads Not Moving 48 Hours or More - 6/13/2018

| | E Canada | Prince Rupert | Thunder Bay | USA/MEX | Vancouver | Total |
|-----------------------------|----------|---------------|-------------|---------|-----------|-------|
| CN | | | | | | |
| Origin | | 103 | | 7 | 105 | 215 |
| Enroute | -27 | -12 | -18 | -4 | 1 | -60 |
| Destination | 0 | | -1 | -2 | 194 | 191 |
| | -27 | 91 | -19 | 1 | 300 | 346 |
| CP | | | | | | |
| Origin | 22 | | 33 | 0 | 10 | 65 |
| Enroute | 0 | | -1 | 1 | -2 | -2 |
| Destination | 0 | | -27 | 27 | 2 | 2 |
| | 22 | | 5 | 28 | 10 | 65 |
| US Rail / Short Line | | | | | | |
| Origin | | | | | | |
| Enroute | | | | -3 | | -3 |
| Destination | 0 | | | -4 | -5 | -9 |
| | 0 | | | -7 | -5 | -12 |



Port Unloads - 6/13/2018

| | Prince Rupert | Vancouver | West Coast Total | Thunder Bay | Total |
|----|---------------|-----------|------------------|-------------|-------|
| CN | 191 | 314 | 505 | 37 | 542 |
| CP | | 345 | 345 | 297 | 642 |
| | 191 | 659 | 850 | 334 | 1,184 |



Port Terminal Status

Vancouver

Daily Activity for 6/13/2018

| | Cars Arrived | Cars Received in Interchange | Cars Delivered in Interchange | Cars Placed for Unloading | Loads on Wheels at Destination As of 6/13/2018 |
|-----|--------------|------------------------------|-------------------------------|---------------------------|--|
| CN | 164 | 110 | | 352 | 959 |
| CP | 150 | | 111 | 322 | 232 |
| SRY | 1 | 1 | | 6 | 41 |

Port Unloads

| | 06/13 | 06/12 | Week To Date | Last Week |
|-----|-------|-------|--------------|-----------|
| CN | 314 | 359 | 1,115 | 2,649 |
| CP | 345 | 295 | 851 | 1,926 |
| SRY | 8 | 4 | 24 | 54 |

Age Profile of Loaded Cars Waiting Placement for Unloading

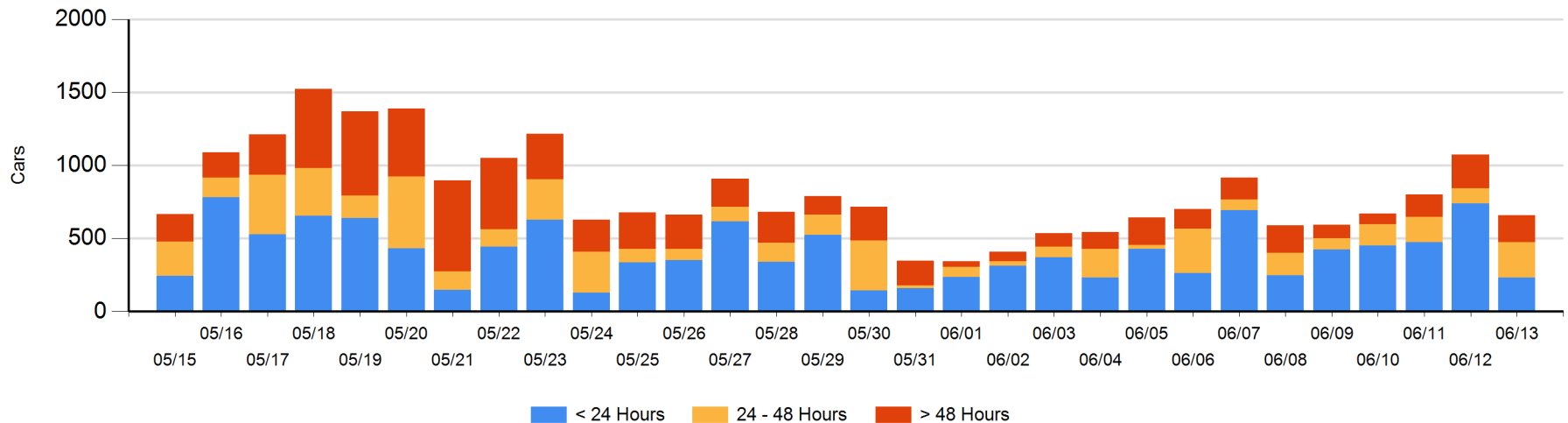
Today

| | < 24 Hrs | 24 - 48 Hrs | > 48-72 Hrs | > 72 Hrs | Total On Hand |
|-----|----------|-------------|-------------|----------|---------------|
| CN | 141 | 101 | 27 | 131 | 400 |
| CP | 91 | 142 | | 26 | 259 |
| SRY | | | | | 0 |

Change in Last 24 Hours

| | < 24 Hrs | 24-48 Hrs | 48 - 72 Hrs | > 72 Hrs |
|-----|----------|-----------|-------------|----------|
| CN | -157 | 59 | -137 | 101 |
| CP | -350 | 81 | -5 | -8 |
| SRY | | | | |

Loaded Cars on Hand Vancouver Waiting for Placement - Last 30 Days All Railways



Port Terminal Status

Prince Rupert

Daily Activity for 6/13/2018

| | Cars Arrived | Cars Received in Interchange | Cars Delivered in Interchange | Cars Placed for Unloading | Loads on Wheels at Destination As of 6/13/2018 |
|----|--------------|------------------------------|-------------------------------|---------------------------|--|
| CN | | 363 | | 363 | 288 |

Port Unloads

| | 06/13 | 06/12 | Week To Date | Last Week |
|----|-------|-------|--------------|-----------|
| CN | 191 | 100 | 385 | 437 |

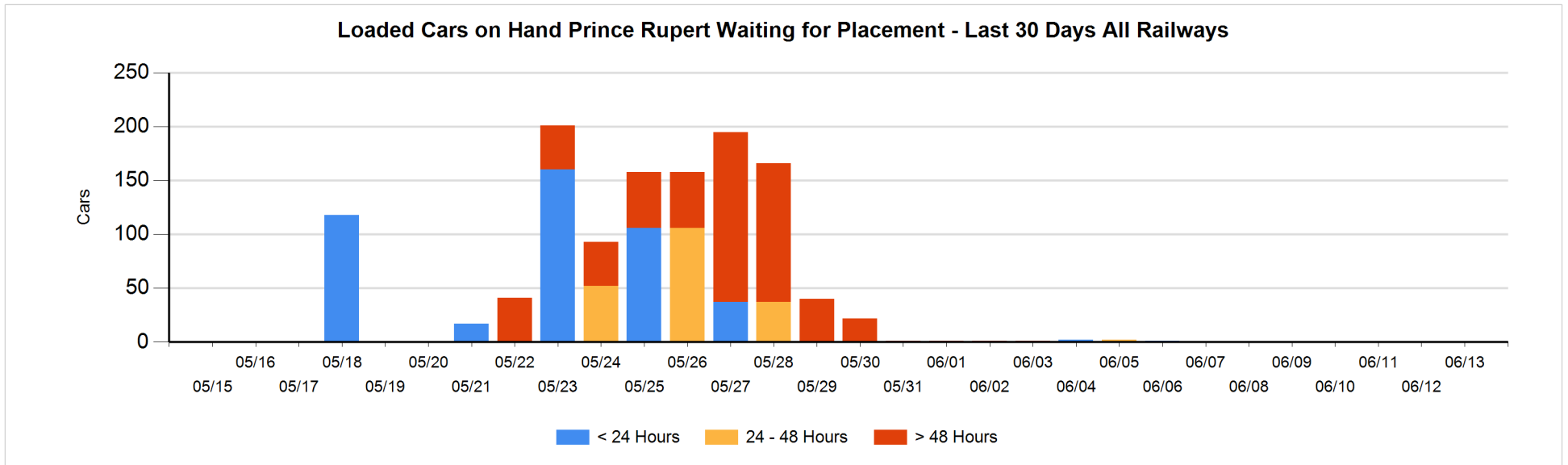
Age Profile of Loaded Cars Waiting Placement for Unloading

Today

| | < 24 Hrs | 24 - 48 Hrs | > 48-72 Hrs | > 72 Hrs | Total On Hand |
|----|----------|-------------|-------------|----------|---------------|
| CN | | | | | 0 |

Change in Last 24 Hours

| | < 24 Hrs | 24-48 Hrs | 48 - 72 Hrs | > 72 Hrs |
|----|----------|-----------|-------------|----------|
| CN | | | | |



Port Terminal Status

Thunder Bay

Daily Activity for 6/13/2018

| | Cars Arrived | Cars Received in Interchange | Cars Delivered in Interchange | Cars Placed for Unloading | Loads on Wheels at Destination As of 6/13/2018 |
|----|--------------|------------------------------|-------------------------------|---------------------------|--|
| CN | 120 | | | 38 | 156 |
| CP | 385 | | | 297 | 448 |

Port Unloads

| | 06/13 | 06/12 | Week To Date | Last Week |
|----|-------|-------|--------------|-----------|
| CN | 37 | 127 | 246 | 697 |
| CP | 297 | 178 | 608 | 1,042 |

Age Profile of Loaded Cars Waiting Placement for Unloading

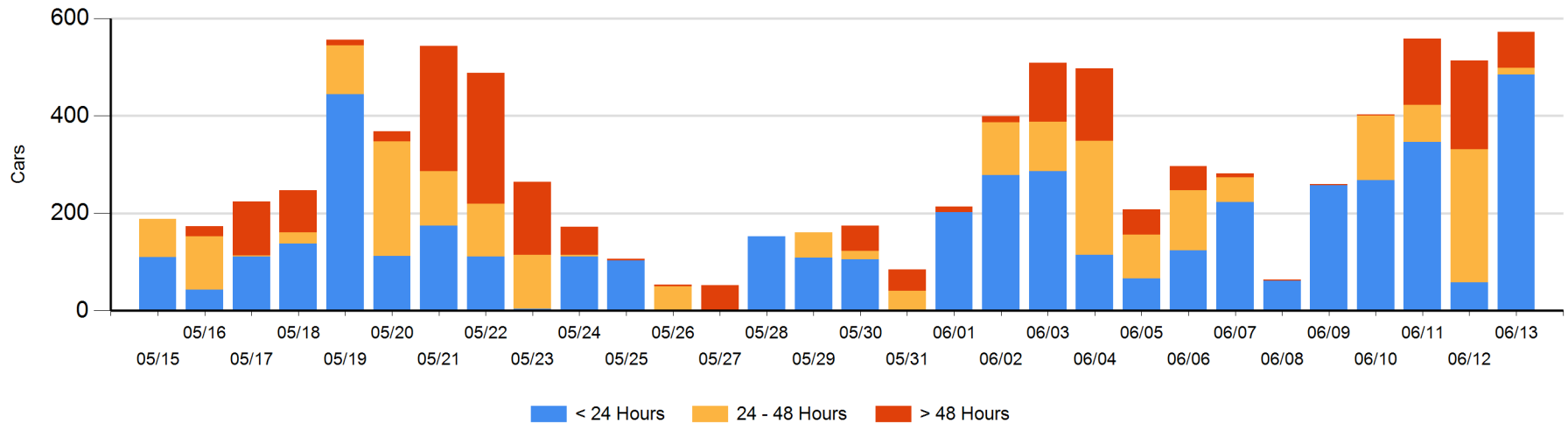
Today

| | < 24 Hrs | 24 - 48 Hrs | > 48-72 Hrs | > 72 Hrs | Total On Hand |
|----|----------|-------------|-------------|----------|---------------|
| CN | 100 | 13 | | 12 | 125 |
| CP | 385 | 1 | 9 | 52 | 447 |

Change in Last 24 Hours

| | < 24 Hrs | 24-48 Hrs | 48 - 72 Hrs | > 72 Hrs |
|----|----------|-----------|-------------|----------|
| CN | 69 | 13 | | -82 |
| CP | 358 | -272 | -68 | 41 |

Loaded Cars on Hand Thunder Bay Waiting for Placement - Last 30 Days All Railways



Measurement Definitions

| | |
|---------------------------------|---|
| Loads on Wheels | <p>Count of loaded rail cars including all rail cars that have been released loaded at origin and have not been reported by the railway as unloaded at destination.</p> <p>Counts include all rail cars (hopper cars and boxcars) moving within a pipeline.</p> |
| Loads Not Moving | <p>Loaded rail cars for which the railways have not reported a movement event for 48 hours or more whether the rail car is at origin, enroute or at destination.</p> |
| Port Unloads | <p>Count of rail cars reported by railways as unloaded at the western port destinations of Vancouver, Prince Rupert and Thunder Bay.</p> <p>Unload counts include all rail cars (hopper cars and boxcars) unloaded by all receivers including major port terminals, transloaders and other receivers.</p> |
| Cars Arrived | <p>Count of rail cars reported as arrived at the destination railway terminal.</p> |
| Cars Received in Interchange | <p>Count of rail cars received in interchange by each railway within a destination railway terminal. Interchange activity is tracked for the Vancouver and Thunder Bay pipelines as applicable.</p> |
| Cars Delivered in Interchange | <p>Count of rail cars delivered in interchange by each railway within a destination railway terminal. Interchange activity is tracked for the Vancouver and Thunder Bay pipelines as applicable.</p> |
| Cars Placed for Unloading | <p>Count of rail cars reported by the railways as placed loaded at the receiver's facility for unloading.</p> |
| Loads on Wheels at Destination | <p>Count of rail cars that remain under load within the destination railway terminal including rail cars that have been reported as placed for unloading but not yet reported as unloaded.</p> |
| Waiting Placement for Unloading | <p>Count of rail cars that have been reported as arrived at the destination railway terminal but not reported as placed for unloading by the railway.</p> <p>For the Ports of Vancouver, Prince Rupert and Thunder Bay the count of rail cars waiting placement for unloading is categorized by age – i.e. the elapsed time from arrival at destination to the current report date.</p> |