

Note to Reader

Prince Rupert unloads continue to be lower than normal as a result of ongoing maintenance at the terminal resulting in reduced unload capacity. While unloads have averaged 770 per week over the course of the last four weeks, they have now risen above the 900 car mark for two consecutive weeks consistent with an increase in hopper car orders in this corridor which have risen above 1,000 cars in week 48 for only the second time in the last six weeks. Alliance Grain Terminal in Vancouver has now begun planned maintenance which is expected to continue until mid-August.

SPEED READ

- Loads on wheels decreased overnight, marking a decline in both CN and CP volumes. On a net basis, the traffic levels in Vancouver corridor decreased significantly offset by higher volumes in Thunder Bay and Prince Rupert corridors.
- Network fluidity improved overnight for the first time in the last five days due to a decline in CN and CP idle car counts by 42% and 18%, respectively. The count of cars for 4+ days increased for two consecutive days - now at more than 1,000 cars.
- Week 48 unloads now ahead of the prior week's performance after two days by more than 250 unloads reflecting an improved week over week performance at Vancouver offset by lower unloads at Prince Rupert and Thunder Bay.

=====

Loads on Wheels

- Loads on wheels declined -4% (-371) overnight. The decline reflects lower traffic levels for both CN and CP - now at 8,961 and 10% above the trailing 30 day average.
- On a net basis, the decrease in loads on wheels reflects low volumes in Vancouver corridor offset by higher volumes in Thunder Bay and Prince Rupert corridors.
- CN volumes decreased slightly by 1% (-29) overnight with lower levels in Vancouver corridor offset by higher volumes in Thunder Bay and Prince Rupert corridors. System wide CN loads on wheels now at 4,097 and 6% above the trailing 30 day average.
- CP volumes dropped 9% (-418) overnight driven by a decrease in Vancouver destined traffic offset by a slight increase in Thunder Bay corridor. CP system wide loads on wheels now at 4,463 and 13% above the trailing 30 day average.
- Vancouver now at 4,885 - decreased significantly by 11% overnight and equalled the trailing 30 day average.
- The Prince Rupert pipeline currently sits at 1,061, up 5% overnight, 31% above the trailing 30 day average and above the 1,000 car threshold for the second consecutive day in the last nine days.
- Thunder Bay volumes increased significantly by 13% overnight - now at 1,468 cars, the highest level seen in the last 30 days, above the 1,000 car threshold for the fifth consecutive day and 33% above the trailing 30 day average with 66% of traffic moving on CP.

Hopper Car Rationing

- No hopper car rationing has been reported for either CN or CP in week 47 and none expected in week 48.

Loads Not Moving

- **The count of cars not moving for 48+ hours decreased for the first time following four consecutive days of increasing counts, down 28% (-744) overnight, reflecting lower counts from both major railways.**
- CN
 - **The count of idle cars declined 42% overnight (-468 cars), marking the first day of improvement - idle car counts now at 651.**

- The number of cars idle for 4+ days increased for four consecutive days, up 40% overnight from 330 cars to about 460 cars.
- The count of cars not moving for 7+ days decreased 17% overnight - now at just below 40 cars.
- Vancouver represents 82% of all idle cars.
- CP
 - **CP counts declined 18% (-276 cars) overnight, demonstrating an improvement for the first time in the last five days - idle car counts now at 1,230.**
 - The number of cars idle for 4+ days was largely unchanged overnight - currently at more than 650 cars, nearly quadruple (+490) in the last six days.
 - The count of cars idle for 7+ days surged 263% overnight - remains at nearly 120 cars.
 - Vancouver accounts for 84% of all idle cars.
 - In total 39% of all idle cars are dwelling at origin locations.

Port Performance

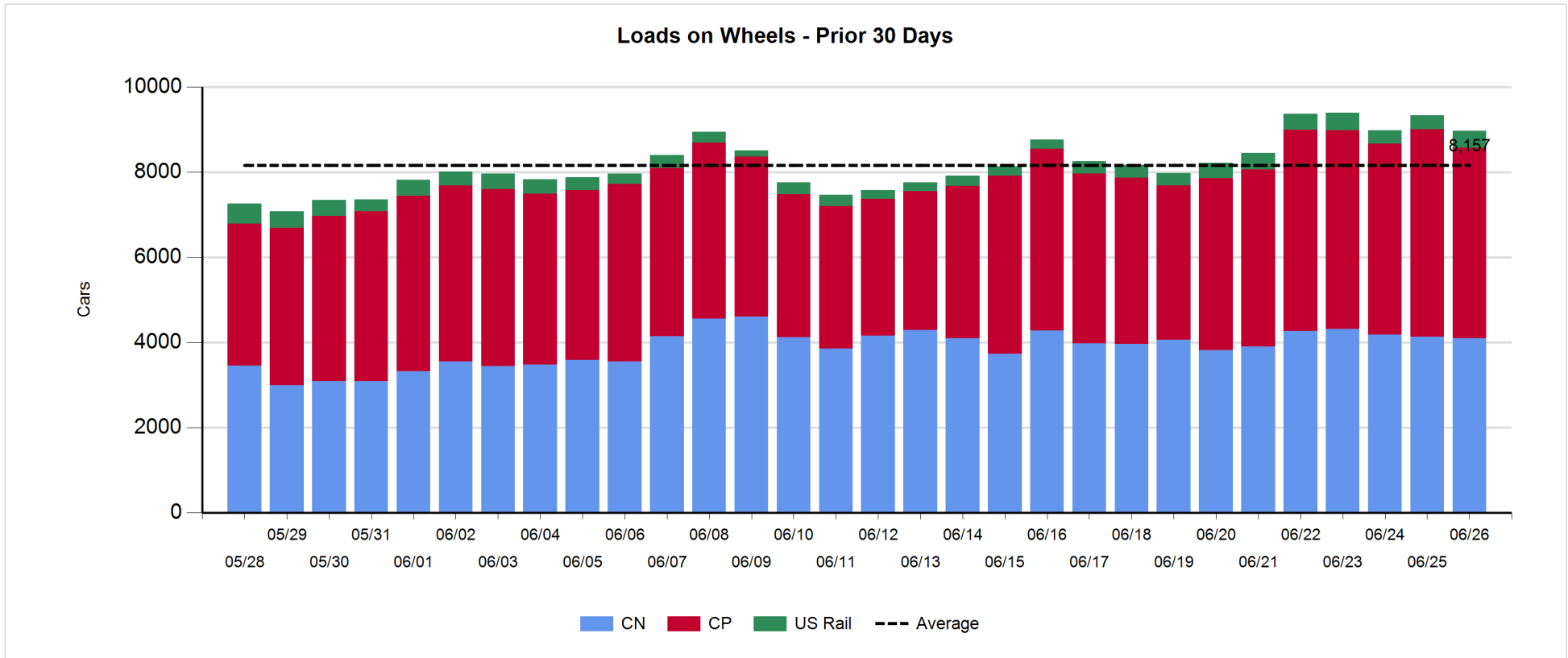
- CN and CP reported a total of 1,049 cars unloaded at the three western ports - above the 1,000 car threshold for the second time in a row. Two days in Week 48 unloads track 275 unloads ahead of last week's pace, reflecting increased unloads at Vancouver offset by lower unloads in Prince Rupert.
- Vancouver
 - 872 unloads reported by CN and CP at the Port of Vancouver; CN - 496 and CP - 376.
 - There are fewer than 900 cars on hand at Vancouver waiting placement for unloading with about 600 cars arriving at the port in the last 24 hours.
 - CN and CP have around 360 cars enroute to Vancouver west of Alberta - more than 200 Kamloops and west - with 13% of traffic currently moving on CP.
- Prince Rupert
 - Prince Rupert unloads (1) fell below the 100 car threshold for the third time in the last four days and now trail last week's unloads after two days by more than 200.
 - Loads on wheels now slightly above 1,000 cars.
 - There are nearly 150 cars west of Jasper - all Prince George and west.
 - There are currently zero cars on site. Given the structure of the pipeline, there is a chance unloads may be challenged in the next few days.
- Thunder Bay
 - 176 unloads reported at Thunder Bay yesterday. Two days in Week 48 unloads track behind of last week's pace by about 10 unloads.
 - There are about 300 cars on site at Thunder Bay with more than 100 cars arriving at the Port in the prior 24 hours.
 - There are 300 cars enroute to Thunder Bay - all Winnipeg and east. Cars on hand and those enroute should support unloads for another day or two.

Daily Loads on Wheels - 6/26/2018

	E Canada	Prince Rupert	Thunder Bay	USA/MEX	Vancouver	Total
CN	294	1,061	498	162	2,082	4,097
CP	92		970	632	2,769	4,463
Short Line	28				34	62
US Rail				339		339
	414	1,061	1,468	1,133	4,885	8,961

Change in Loads on Wheels - Prior 24 Hours

	E Canada	Prince Rupert	Thunder Bay	USA/MEX	Vancouver	Total
CN	-13		94	-10	-155	-29
CP	2		77	-47	-450	-418
Short Line	17				16	33
US Rail				43		43
	6	55	171	-14	-589	-371

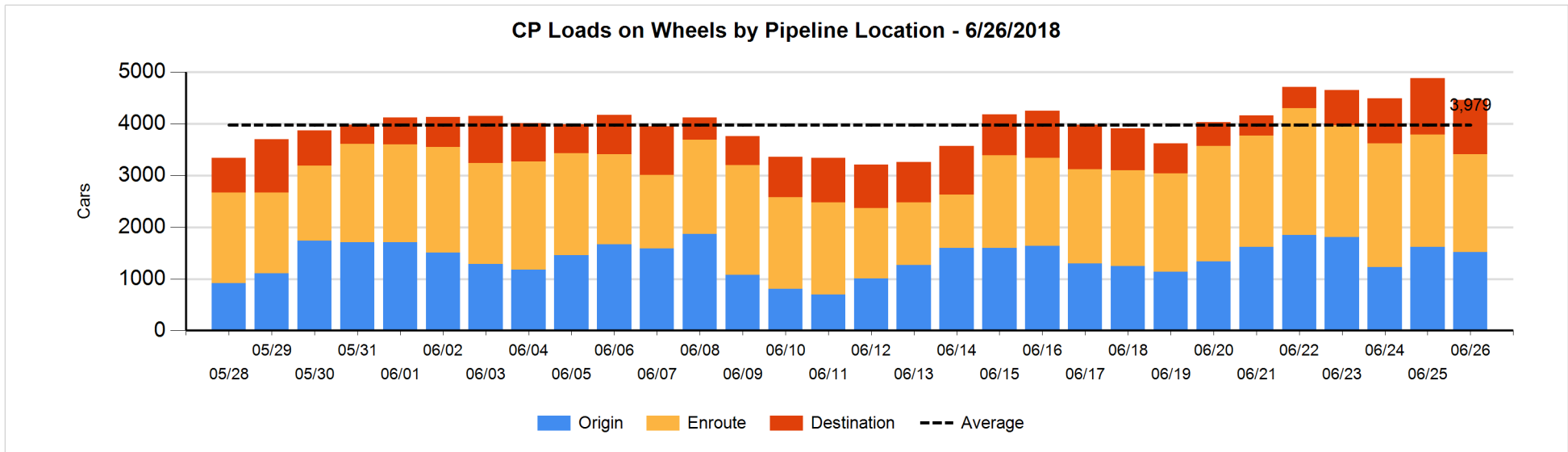
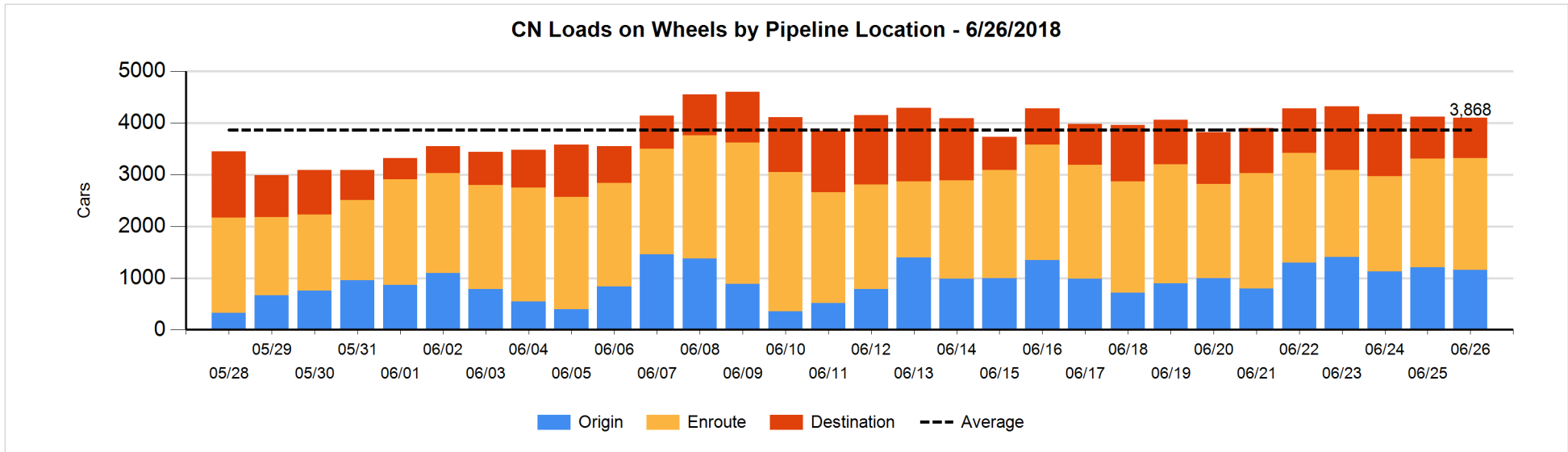


Daily Loads on Wheels By Pipeline Location - 6/26/2018

	E Canada	Prince Rupert	Thunder Bay	USA/MEX	Vancouver	Total
CN						
Origin	51	298	119	7	678	1,153
Enroute	198	579	238	152	999	2,166
Destination	45	184	141	3	405	778
	294	1,061	498	162	2,082	4,097
CP						
Origin	23		399	129	968	1,519
Enroute	69		280	353	1,184	1,886
Destination			291	150	617	1,058
	92		970	632	2,769	4,463
US Rail / Short Line						
Origin						
Enroute	7			273		280
Destination	21			66	34	121
	28			339	34	401

Change in Daily Loads on Wheels By Pipeline Location - Prior 24 Hours

	E Canada	Prince Rupert	Thunder Bay	USA/MEX	Vancouver	Total
CN						
Origin	25	-43	64	-25	-71	-50
Enroute	-41	-79	55	19	102	56
Destination	3	177	-25	-4	-186	-35
	-13	55	94	-10	-155	-29
CP						
Origin	2		67	30	-201	-102
Enroute	0		47	-184	-142	-279
Destination			-37	107	-107	-37
	2		77	-47	-450	-418
US Rail / Short Line						
Origin						
Enroute	0			56		56
Destination	17			-13	16	20
	17			43	16	76

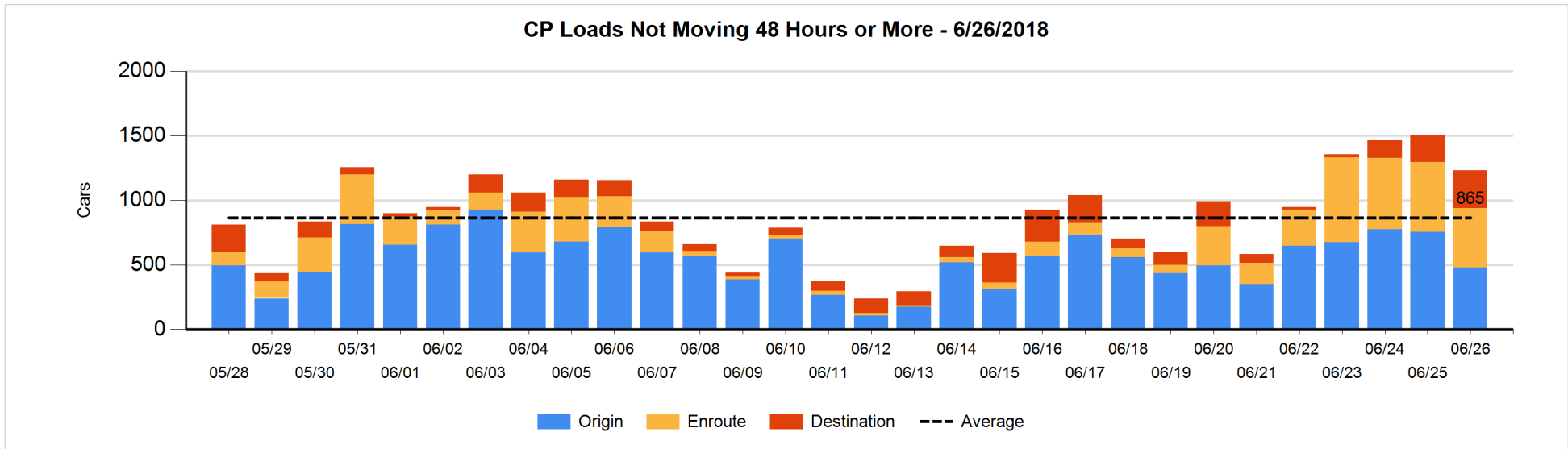
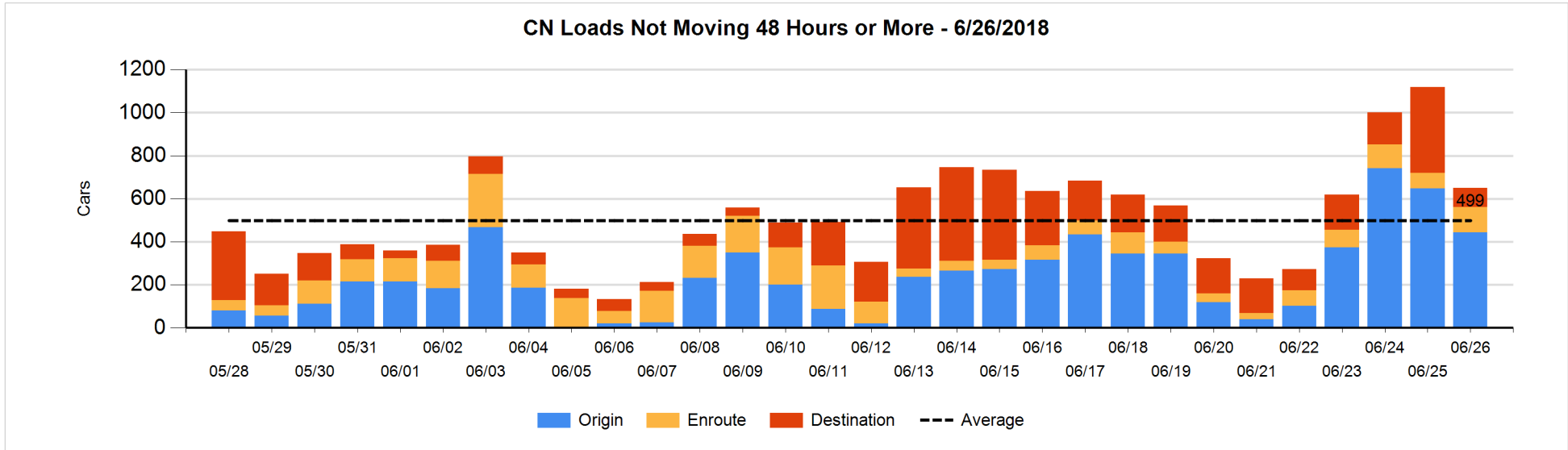


Loads Not Moving 48 Hours or More - 6/26/2018

	E Canada	Prince Rupert	Thunder Bay	USA/MEX	Vancouver	Total
CN						
Origin		27		4	413	444
Enroute	8	11	1	50	46	116
Destination	13		2		76	91
	21	38	3	54	535	651
CP						
Origin	20		4	2	451	477
Enroute	1		6	109	346	462
Destination			50	2	239	291
	21		60	113	1036	1230
US Rail / Short Line						
Origin						
Enroute	1			42		43
Destination				14	10	24
	1			56	10	67

Change in Loads Not Moving 48 Hours or More - 6/26/2018

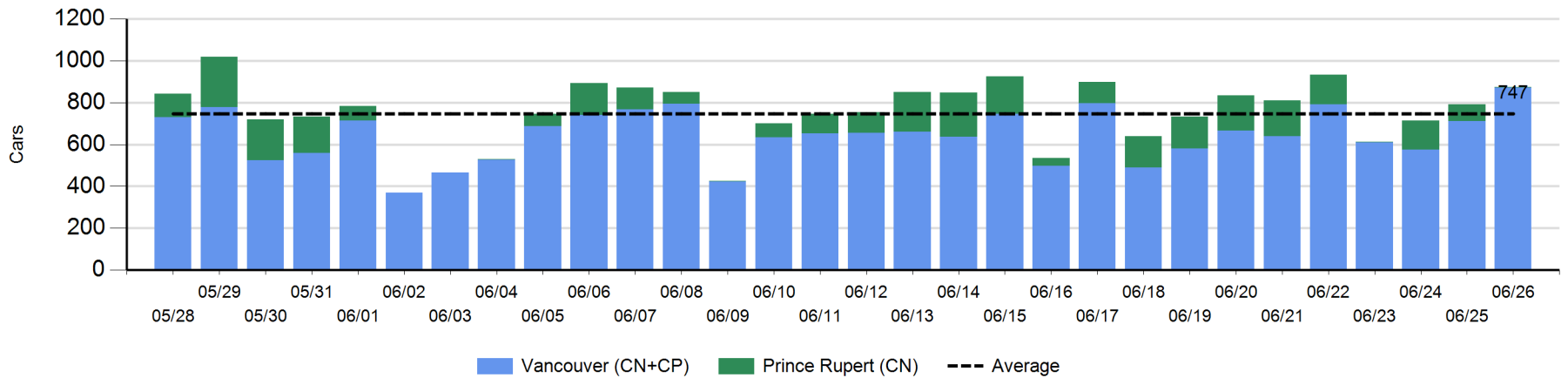
	E Canada	Prince Rupert	Thunder Bay	USA/MEX	Vancouver	Total
CN						
Origin		0	-55	0	-149	-204
Enroute	3	9	0	28	3	43
Destination	0	-1	-116	-7	-183	-307
	3	8	-171	21	-329	-468
CP						
Origin	1		-50	-46	-183	-278
Enroute	-1		0	-41	-37	-79
Destination			-57	1	137	81
	0		-107	-86	-83	-276
US Rail / Short Line						
Origin						
Enroute	0			0		0
Destination	-1			-11	-3	-15
	-1			-11	-3	-15



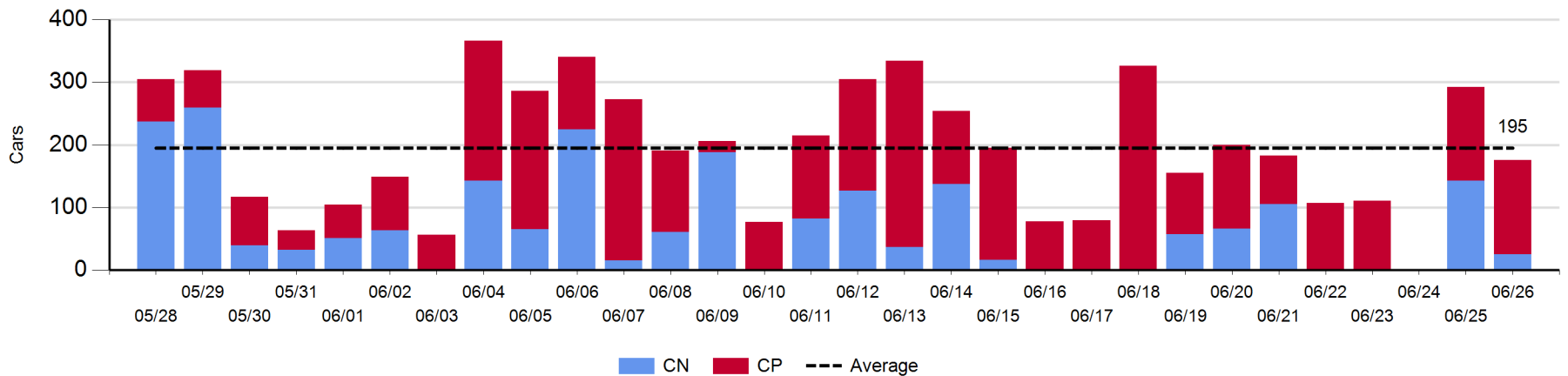
Port Unloads - 6/26/2018

	Prince Rupert	Vancouver	West Coast Total	Thunder Bay	Total
CN	1	496	497	25	522
CP		376	376	151	527
	1	872	873	176	1,049

West Coast Port Unloads - Prior 30 Days



Thunder Bay Port Unloads - Prior 30 Days



Port Terminal Status

Vancouver

Daily Activity for 6/26/2018

	Cars Arrived	Cars Received in Interchange	Cars Delivered in Interchange	Cars Placed for Unloading	Loads on Wheels at Destination As of 6/26/2018
CN	333	128	16	286	405
CP	268		131	349	617
SRY	1	19		8	34

Port Unloads

	06/26	06/25	Week To Date	Last Week
CN	496	365	861	2,571
CP	376	347	723	1,780
SRY	8	4	12	55

Age Profile of Loaded Cars Waiting Placement for Unloading

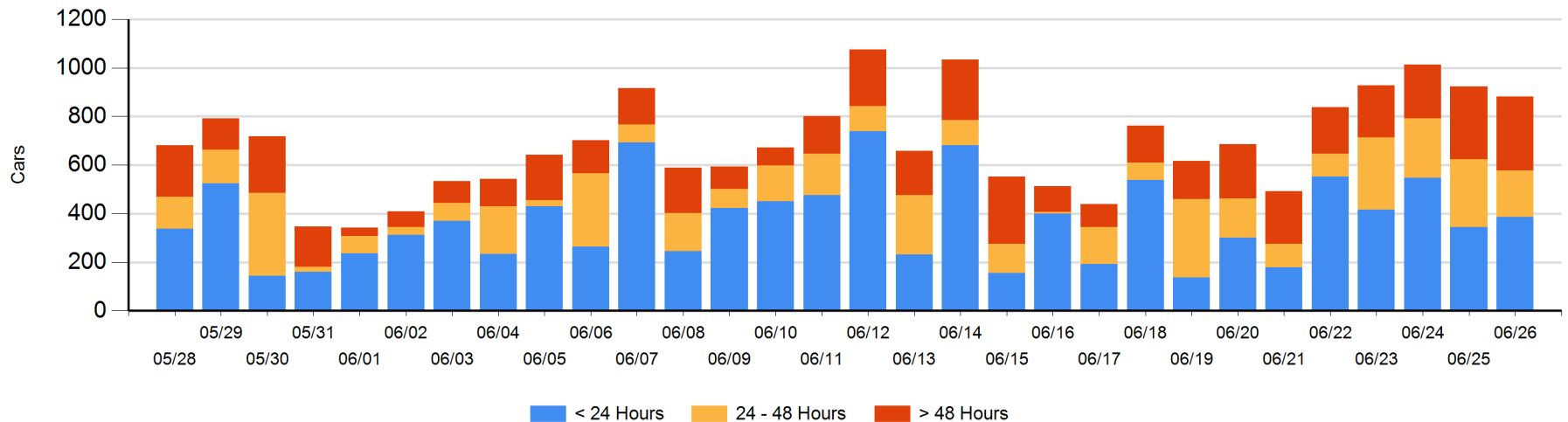
Today

	< 24 Hrs	24 - 48 Hrs	> 48-72 Hrs	> 72 Hrs	Total On Hand
CN	231	87	3	50	371
CP	155	104	161	91	511
SRY					0

Change in Last 24 Hours

	< 24 Hrs	24-48 Hrs	48 - 72 Hrs	> 72 Hrs
CN	144	81	-148	11
CP	-103	-169	141	1
SRY				

Loaded Cars on Hand Vancouver Waiting for Placement - Last 30 Days All Railways



Port Terminal Status

Prince Rupert

Daily Activity for 6/26/2018

	Cars Arrived	Cars Received in Interchange	Cars Delivered in Interchange	Cars Placed for Unloading	Loads on Wheels at Destination As of 6/26/2018
CN	178			178	184

Port Unloads

	06/26	06/25	Week To Date	Last Week
CN	1	79	80	922

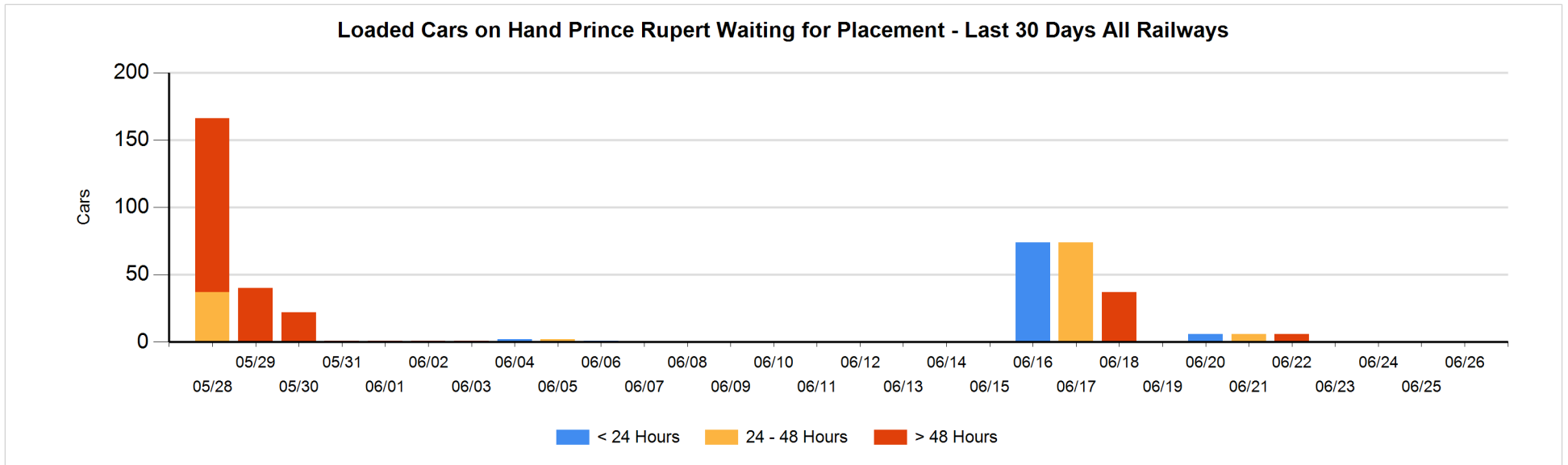
Age Profile of Loaded Cars Waiting Placement for Unloading

Today

	< 24 Hrs	24 - 48 Hrs	> 48-72 Hrs	> 72 Hrs	Total On Hand
CN					0

Change in Last 24 Hours

	< 24 Hrs	24-48 Hrs	48 - 72 Hrs	> 72 Hrs
CN				



Port Terminal Status

Thunder Bay

Daily Activity for 6/26/2018

	Cars Arrived	Cars Received in Interchange	Cars Delivered in Interchange	Cars Placed for Unloading	Loads on Wheels at Destination As of 6/26/2018
CN				139	141
CP	114			123	291

Port Unloads

	06/26	06/25	Week To Date	Last Week
CN	25	143	168	228
CP	151	149	300	855

Age Profile of Loaded Cars Waiting Placement for Unloading

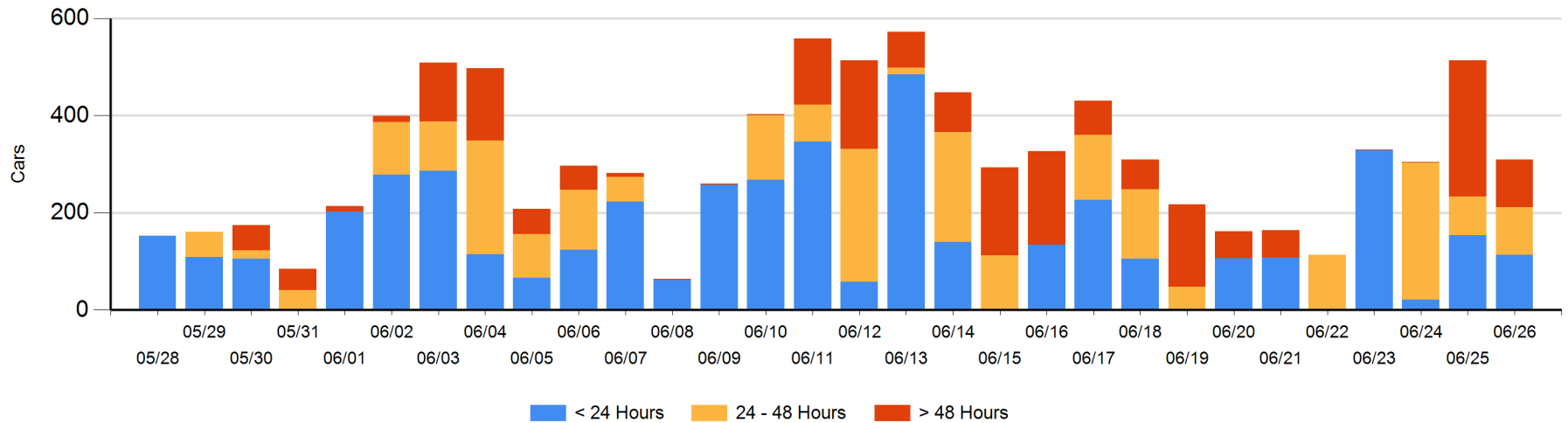
Today

	< 24 Hrs	24 - 48 Hrs	> 48-72 Hrs	> 72 Hrs	Total On Hand
CN					0
CP	114	97	8	91	310

Change in Last 24 Hours

	< 24 Hrs	24-48 Hrs	48 - 72 Hrs	> 72 Hrs
CN		-21	-118	
CP	-40	39	-154	90

Loaded Cars on Hand Thunder Bay Waiting for Placement - Last 30 Days All Railways



Measurement Definitions

Loads on Wheels	<p>Count of loaded rail cars including all rail cars that have been released loaded at origin and have not been reported by the railway as unloaded at destination.</p> <p>Counts include all rail cars (hopper cars and boxcars) moving within a pipeline.</p>
Loads Not Moving	<p>Loaded rail cars for which the railways have not reported a movement event for 48 hours or more whether the rail car is at origin, enroute or at destination.</p>
Port Unloads	<p>Count of rail cars reported by railways as unloaded at the western port destinations of Vancouver, Prince Rupert and Thunder Bay.</p> <p>Unload counts include all rail cars (hopper cars and boxcars) unloaded by all receivers including major port terminals, transloaders and other receivers.</p>
Cars Arrived	<p>Count of rail cars reported as arrived at the destination railway terminal.</p>
Cars Received in Interchange	<p>Count of rail cars received in interchange by each railway within a destination railway terminal. Interchange activity is tracked for the Vancouver and Thunder Bay pipelines as applicable.</p>
Cars Delivered in Interchange	<p>Count of rail cars delivered in interchange by each railway within a destination railway terminal. Interchange activity is tracked for the Vancouver and Thunder Bay pipelines as applicable.</p>
Cars Placed for Unloading	<p>Count of rail cars reported by the railways as placed loaded at the receiver's facility for unloading.</p>
Loads on Wheels at Destination	<p>Count of rail cars that remain under load within the destination railway terminal including rail cars that have been reported as placed for unloading but not yet reported as unloaded.</p>
Waiting Placement for Unloading	<p>Count of rail cars that have been reported as arrived at the destination railway terminal but not reported as placed for unloading by the railway.</p> <p>For the Ports of Vancouver, Prince Rupert and Thunder Bay the count of rail cars waiting placement for unloading is categorized by age – i.e. the elapsed time from arrival at destination to the current report date.</p>