

SPEED READ

- Loads on wheels declined modestly in the last 24 hours reflecting lower volumes on CN and higher volumes on CP.
- CN rationed no hopper car orders in week 39 marking the second consecutive week and second time since week 9 at the end of September that no orders have been rationed by CN. It appears as though no orders will be rationed in week 40.
- Network fluidity has deteriorated in the last few days with the count of idle cars rising on both railways. Idle car counts have now risen above 2,000 cars for CN and CP combined - the highest level in two weeks. On a somewhat positive note the increase reflects higher counts for cars sitting idle for 48-96 hours with the count of cars older than that on both railways remaining at the lowest levels seen in a number of months.
- Western port unloads exceeded 9,100 cars for week 40 - some 900 unloads better than the prior week. This reflects reduced unloads at Prince Rupert offset by higher unloads at both Thunder Bay and Vancouver.
- It is expected that pipeline volumes and unloads in the Prince Rupert corridor will continue to tail off somewhat reflecting reduced unload capacity at the Port beginning this week due to scheduled maintenance. As shippers adjust their pipelines order volumes in the Prince Rupert corridor have fallen below 1,000 cars for two consecutive weeks as compared to a weekly average of 1,500 for the preceding four weeks.

Loads on Wheels

- Loads on wheels declined modestly overnight following three consecutive days of increasing volumes - now at 10,287 - above 10,000 cars for the second consecutive day and 2% below the trailing 30 day average
- The decline in loads on wheels reflects reduced volumes on CN (-419) and higher volumes on CP (+231).
- On a net basis the nominal decline in loads on wheels is driven by lower volumes in the Vancouver corridor (-510) offset by higher volumes in the Thunder Bay corridor (+403).
- CN volumes declined 8% overnight reflecting declines in the Vancouver and Prince Rupert corridors offset by an increase in Thunder Bay traffic. System wide CN loads on wheels now at 4,956 - 7% below the trailing 30 day average.
- CP volumes rose overnight driven by higher volumes moving to Thunder Bay. CP system wide loads on wheels now at 5,086 - 6% above the trailing 30 day average.
- Vancouver now at 6,204 - above the 6,000 car threshold for the fourth consecutive day and in line with the trailing 30 day average.
- The Prince Rupert pipeline currently sits at 878 - below the 1,000 car threshold for the third consecutive day and 39% below the trailing 30 day average.
- Thunder Bay volumes up 30% (400 cars) overnight - 39% above the trailing 30 day average - 60% of traffic moving on CP.

Hopper Car Rationing

- No hopper car rationing by CN occurred in week 39 and to date none has been reported for week 40.

Loads Not Moving

- **The count of cars not moving for 48+ hours rose sharply on both CN (70%) and CP (43%) overnight. This marks the second consecutive day of increasing counts following a five day period where counts had declined steadily on both railways. The count of idle cars now stands at 2,242 - above the 2,000 car threshold for the first time in two weeks.**
- CN
 - **The count of idle cars rose 70% overnight (410 cars). Idle car counts have now risen from a low of 215 cars five days ago to the current level of 1,010 - the highest level seen in 30 days.**
 - The number of cars idle for 4+ days down slightly - remains below 100 cars.

- The count of cars not moving for 7+ days up slightly - remains below 50 cars.
- Vancouver represents 65% of all idle cars.
- CP
 - **CP counts increased 43% (370 cars) overnight. The count of idle cars on CP has jumped 175% in the last two days from a low of 447 two days ago to the current level of 1,232.**
 - The number of cars idle for 4+ days down slightly - remains above 200 cars - well below the trailing 30 day average of nearly 700 cars.
 - The count of cars idle for 7+ days down slightly - remains below 40 cars.
 - Vancouver continues to account for the majority of all idle cars (72%).
 - In total 50% of all idle cars are dwelling at origin locations.

Port Performance

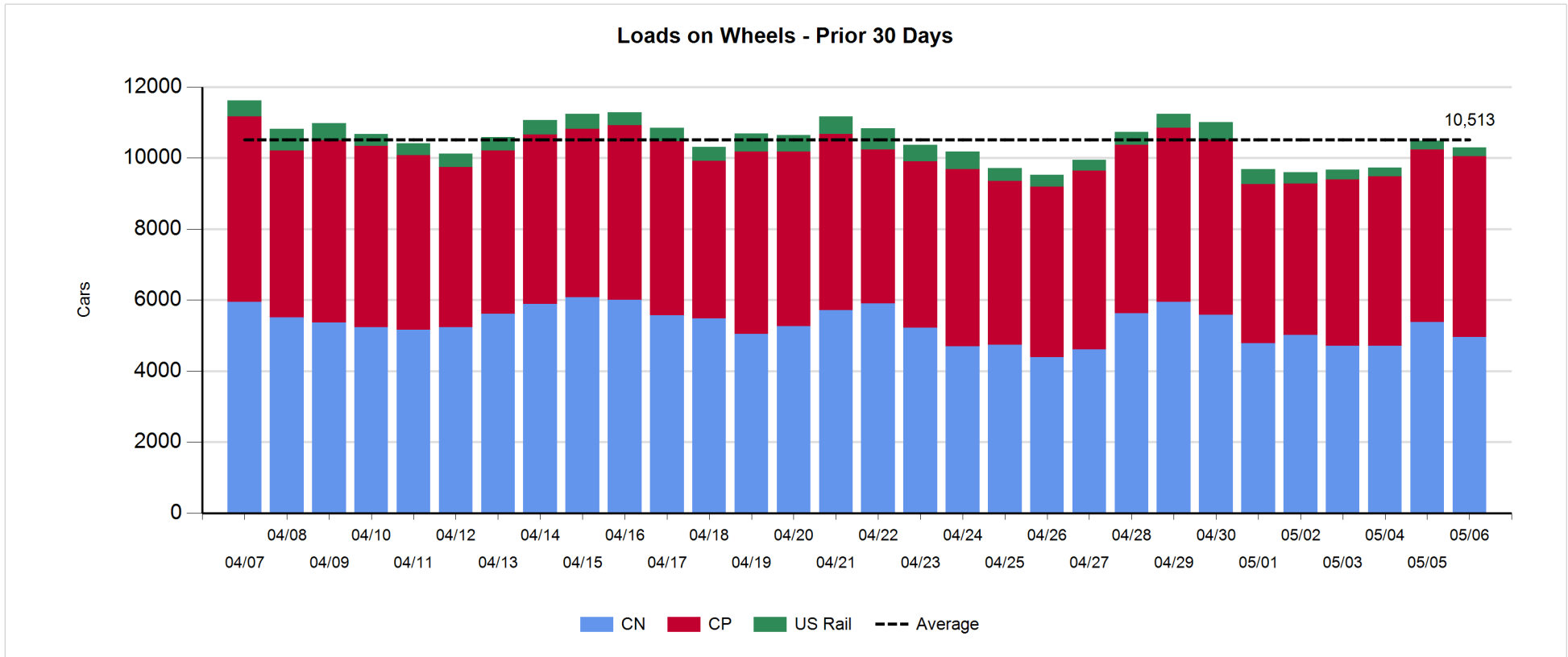
- CN and CP reported a total of 1,214 cars unloaded at the three western ports - week 40 unloads finished 11% (900 cars) above the prior week's performance breaching the 9,000 car threshold at more than 9,100. This reflects lower unloads at Prince Rupert and higher unloads at both Vancouver and Thunder Bay.
- Vancouver
 - 915 cars reported unloaded by CN and CP at the Port of Vancouver; CN - 456 and CP - 459.
 - There are 1,200+ cars on hand at Vancouver waiting placement for unloading - with only 535 cars arriving at the port in the last 24 hours.
 - CN and CP have 1,200+ cars enroute to Vancouver west of Alberta - 650 Kamloops and west - with 60% of traffic currently moving on CP.
- Prince Rupert
 - Prince Rupert unloads fell below 200 cars for two of the last three days of week 40 finishing the week at 1,450 - some 13% lower than the prior week.
 - Loads on wheels now below 900 cars.
 - There are fewer than 400 cars west of Jasper - most west of Prince George.
 - Declining loads on wheels in the Rupert corridor are a reflection of reduced unload capacity at the Port beginning this week due to the start of planned maintenance. Shipper orders for Rupert are below 1,000 cars for the last two weeks (40/41) as compared to a weekly average of 1,500 for the previous four weeks.
- Thunder Bay
 - 64 unloads reported by CN and CP yesterday - week 40 unloads came in 50% (650 cars) higher than the prior week at just under 2,000 cars for the week.
 - There are currently 200+ cars on hand waiting placement for unload with 200+ cars arriving at the Port in the last 24 hours.
 - There are 650+ cars enroute to Thunder Bay with 300 Winnipeg and east.

Daily Loads on Wheels - 5/6/2018

| | E Canada | Prince Rupert | Thunder Bay | USA/MEX | Vancouver | Total |
|------------|----------|---------------|-------------|---------|-----------|--------|
| CN | 256 | 878 | 669 | 313 | 2,840 | 4,956 |
| CP | 90 | | 1,059 | 595 | 3,342 | 5,086 |
| Short Line | 4 | | | | 22 | 26 |
| US Rail | | | | 219 | | 219 |
| | 350 | 878 | 1,728 | 1,127 | 6,204 | 10,287 |

Change in Loads on Wheels - Prior 24 Hours

| | E Canada | Prince Rupert | Thunder Bay | USA/MEX | Vancouver | Total |
|------------|----------|---------------|-------------|---------|-----------|-------|
| CN | 37 | -87 | 148 | -24 | -493 | -419 |
| CP | 0 | | 255 | -2 | -22 | 231 |
| Short Line | 0 | | | | 5 | 5 |
| US Rail | | | | -6 | | -6 |
| | 37 | -87 | 403 | -32 | -510 | -189 |

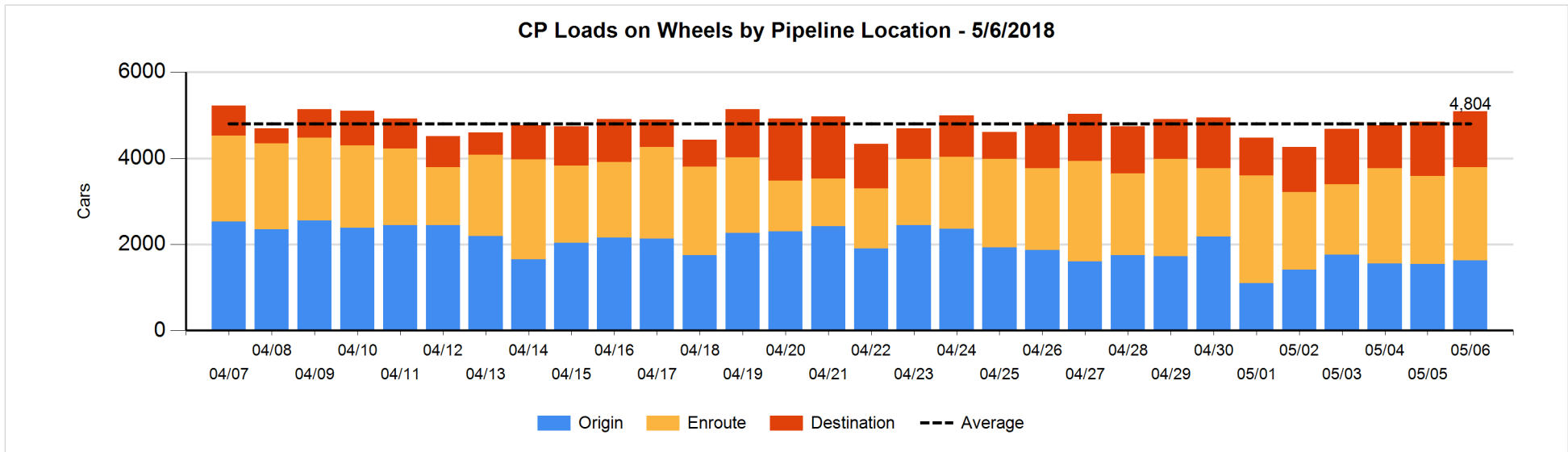
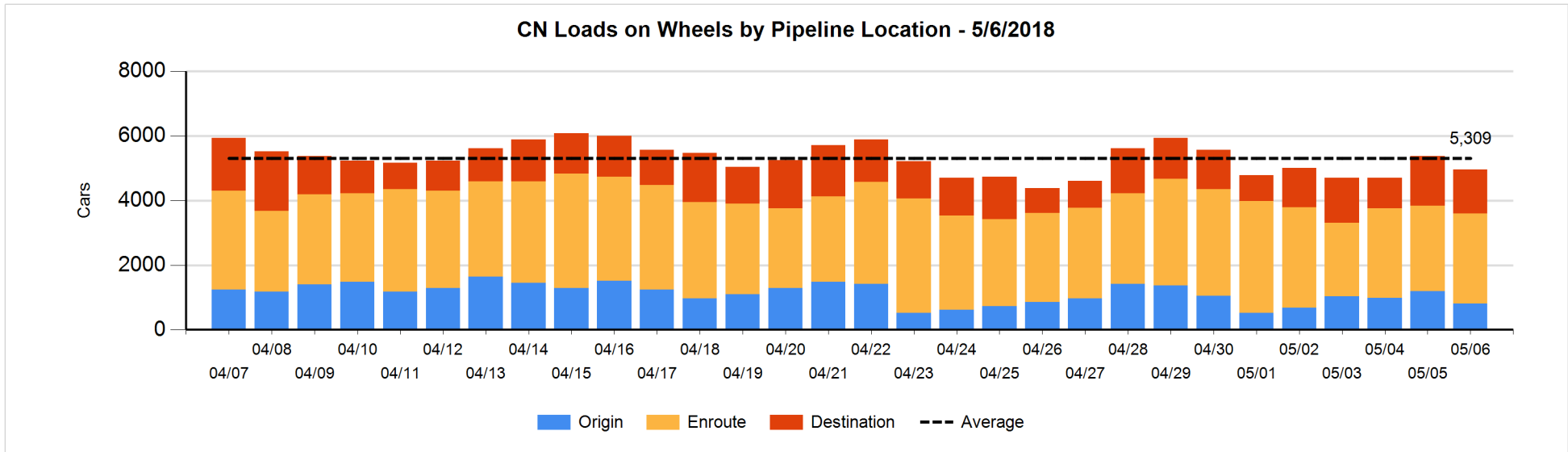


Daily Loads on Wheels By Pipeline Location - 5/6/2018

| | E Canada | Prince Rupert | Thunder Bay | USA/MEX | Vancouver | Total |
|----------------------|----------|---------------|-------------|---------|-----------|-------|
| CN | | | | | | |
| Origin | 2 | 164 | 149 | | 488 | 803 |
| Enroute | 177 | 502 | 236 | 278 | 1,605 | 2,798 |
| Destination | 77 | 212 | 284 | 35 | 747 | 1,355 |
| | 256 | 878 | 669 | 313 | 2,840 | 4,956 |
| CP | | | | | | |
| Origin | 79 | | 291 | 237 | 1,017 | 1,624 |
| Enroute | 11 | | 444 | 222 | 1,491 | 2,168 |
| Destination | | | 324 | 136 | 834 | 1,294 |
| | 90 | | 1,059 | 595 | 3,342 | 5,086 |
| US Rail / Short Line | | | | | | |
| Origin | | | | 12 | | 12 |
| Enroute | | | | 171 | | 171 |
| Destination | 4 | | | 36 | 22 | 62 |
| | 4 | | | 219 | 22 | 245 |

Change in Daily Loads on Wheels By Pipeline Location - Prior 24 Hours

| | E Canada | Prince Rupert | Thunder Bay | USA/MEX | Vancouver | Total |
|----------------------|----------|---------------|-------------|---------|-----------|-------|
| CN | | | | | | |
| Origin | 0 | 139 | 50 | -106 | -476 | -393 |
| Enroute | 49 | -201 | -2 | 80 | 227 | 153 |
| Destination | -12 | -25 | 100 | 2 | -244 | -179 |
| | 37 | -87 | 148 | -24 | -493 | -419 |
| CP | | | | | | |
| Origin | 0 | | 41 | 0 | 45 | 86 |
| Enroute | 0 | | 151 | -108 | 72 | 115 |
| Destination | | | 63 | 106 | -139 | 30 |
| | 0 | | 255 | -2 | -22 | 231 |
| US Rail / Short Line | | | | | | |
| Origin | | | | 0 | | 0 |
| Enroute | | | | -21 | | -21 |
| Destination | 0 | | | 15 | 5 | 20 |
| | 0 | | | -6 | 5 | -1 |

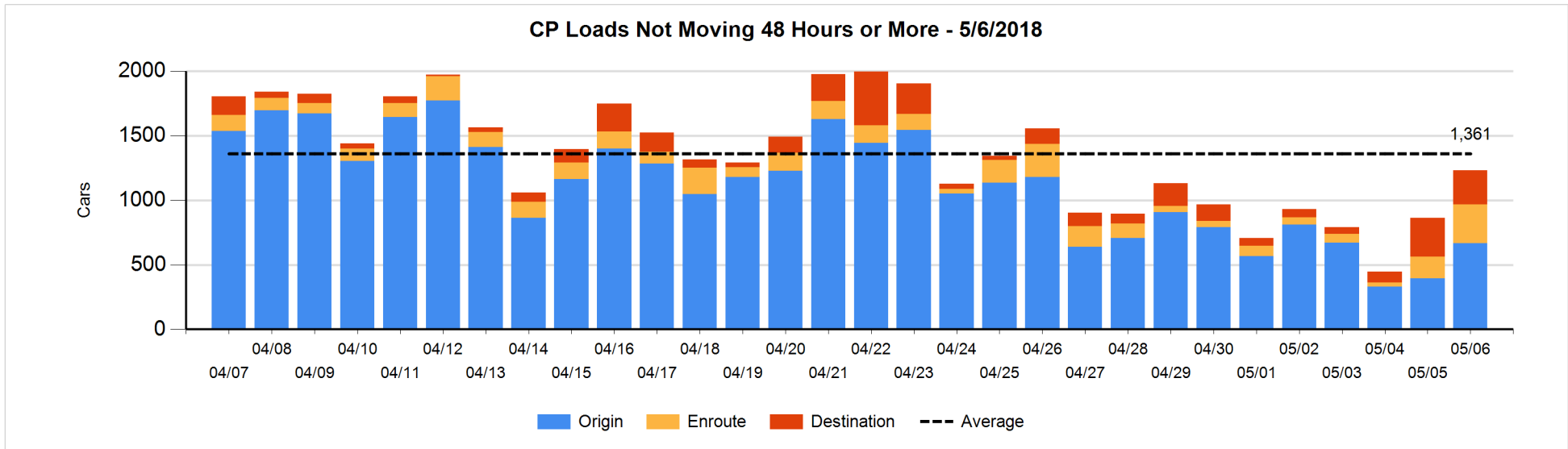
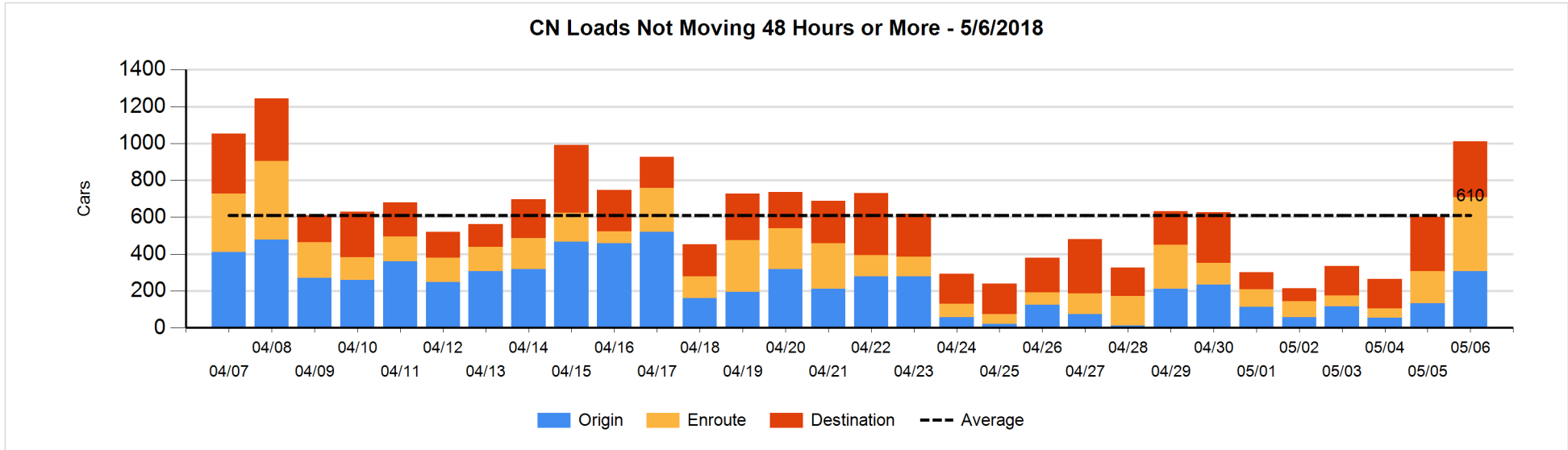


Loads Not Moving 48 Hours or More - 5/6/2018

| | E Canada | Prince Rupert | Thunder Bay | USA/MEX | Vancouver | Total |
|-----------------------------|----------|---------------|-------------|---------|-----------|-------|
| CN | | | | | | |
| Origin | 2 | 16 | | | 290 | 308 |
| Enroute | 55 | 131 | | 38 | 177 | 401 |
| Destination | 77 | 4 | 6 | 33 | 181 | 301 |
| | 134 | 151 | 6 | 71 | 648 | 1010 |
| CP | | | | | | |
| Origin | 79 | | 11 | 137 | 438 | 665 |
| Enroute | 3 | | | 15 | 283 | 301 |
| Destination | | | 82 | 20 | 164 | 266 |
| | 82 | | 93 | 172 | 885 | 1232 |
| US Rail / Short Line | | | | | | |
| Origin | | | | 12 | | 12 |
| Enroute | | | | 33 | | 33 |
| Destination | 4 | | | 17 | 16 | 37 |
| | 4 | | | 62 | 16 | 82 |

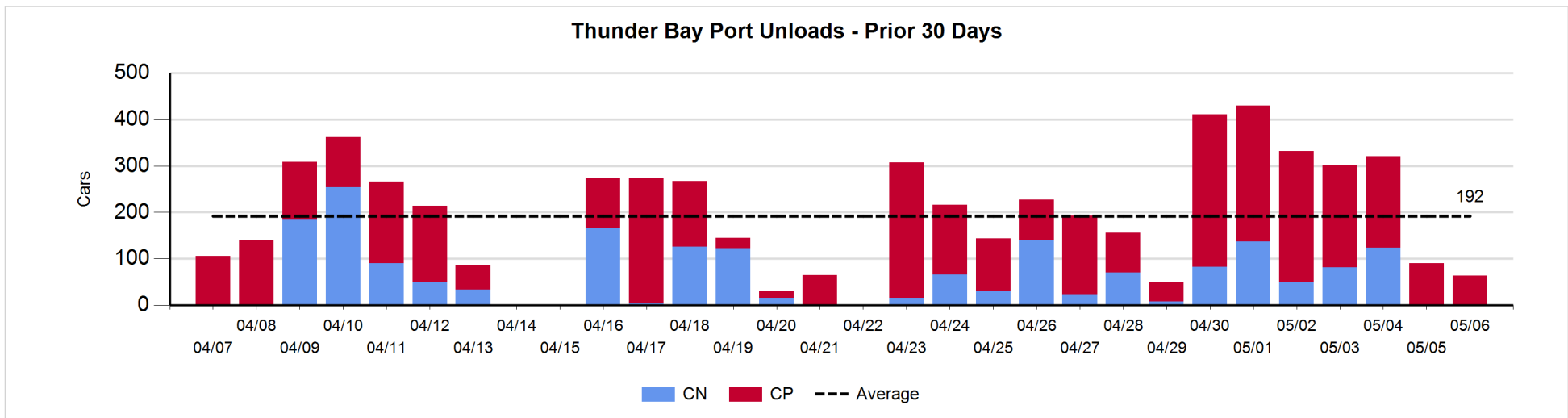
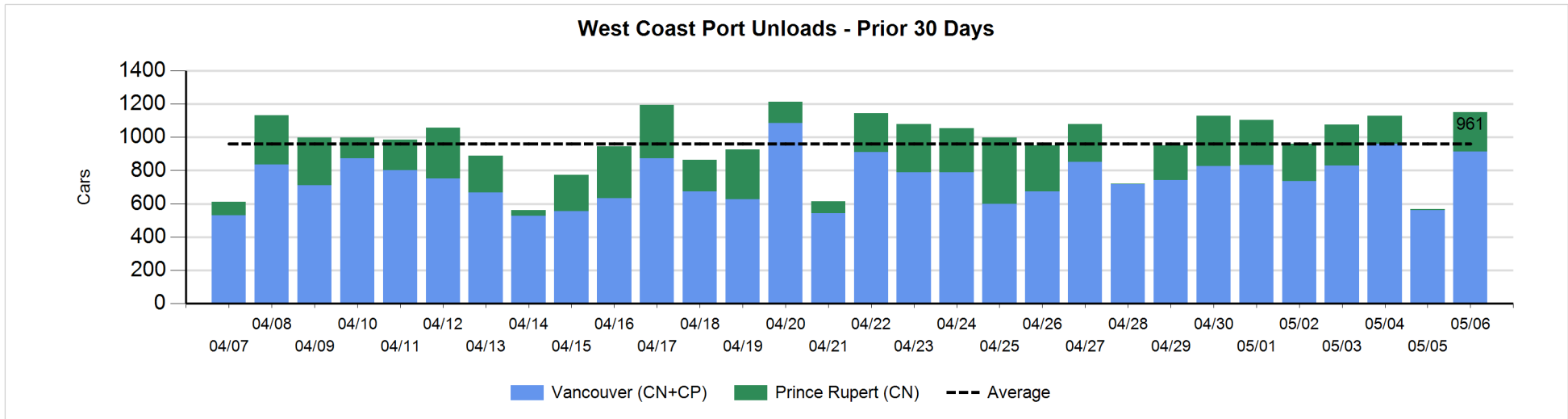
Change in Loads Not Moving 48 Hours or More - 5/6/2018

| | E Canada | Prince Rupert | Thunder Bay | USA/MEX | Vancouver | Total |
|-----------------------------|----------|---------------|-------------|---------|-----------|-------|
| CN | | | | | | |
| Origin | 0 | 16 | | -3 | 163 | 176 |
| Enroute | 13 | 125 | | 29 | 60 | 227 |
| Destination | 43 | 0 | -1 | 29 | -64 | 7 |
| | 56 | 141 | -1 | 55 | 159 | 410 |
| CP | | | | | | |
| Origin | 58 | | 0 | 4 | 210 | 272 |
| Enroute | 0 | | | 9 | 123 | 132 |
| Destination | | | 17 | 4 | -55 | -34 |
| | 58 | | 17 | 17 | 278 | 370 |
| US Rail / Short Line | | | | | | |
| Origin | | | | 0 | | 0 |
| Enroute | | | | 1 | | 1 |
| Destination | 4 | | | -2 | 4 | 6 |
| | 4 | | | -1 | 4 | 7 |



Port Unloads - 5/6/2018

| | Prince Rupert | Vancouver | West Coast Total | Thunder Bay | Total |
|----|---------------|-----------|------------------|-------------|-------|
| CN | 235 | 456 | 691 | 1 | 692 |
| CP | | 459 | 459 | 63 | 522 |
| | 235 | 915 | 1,150 | 64 | 1,214 |



Port Terminal Status

Vancouver

Daily Activity for 5/6/2018

| | Cars Arrived | Cars Received in Interchange | Cars Delivered in Interchange | Cars Placed for Unloading | Loads on Wheels at Destination As of 5/6/2018 |
|-----|--------------|------------------------------|-------------------------------|---------------------------|-----------------------------------------------|
| CN | 297 | 11 | 99 | 369 | 747 |
| CP | 238 | 99 | 14 | 428 | 834 |
| SRY | | 3 | | | 22 |

Port Unloads

| | 05/06 | 05/05 | Week To Date | Last Week |
|-----|-------|-------|--------------|-----------|
| CN | 456 | 157 | 2,807 | 2,431 |
| CP | 459 | 406 | 2,854 | 2,731 |
| SRY | | 4 | 46 | 85 |

Age Profile of Loaded Cars Waiting Placement for Unloading

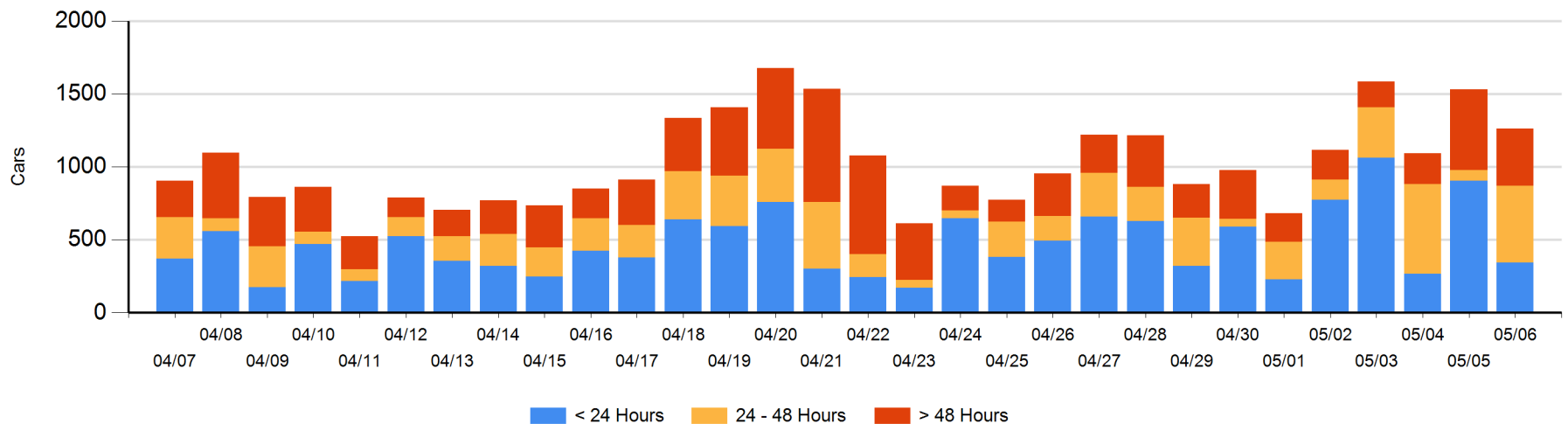
Today

| | < 24 Hrs | 24 - 48 Hrs | > 48-72 Hrs | > 72 Hrs | Total On Hand |
|-----|----------|-------------|-------------|----------|---------------|
| CN | 147 | 117 | 34 | 293 | 591 |
| CP | 196 | 409 | 9 | 56 | 670 |
| SRY | | | | | 0 |

Change in Last 24 Hours

| | < 24 Hrs | 24-48 Hrs | 48 - 72 Hrs | > 72 Hrs |
|-----|----------|-----------|-------------|----------|
| CN | -159 | 83 | -399 | 234 |
| CP | -402 | 368 | -4 | 8 |
| SRY | | | | |

Loaded Cars on Hand Vancouver Waiting for Placement - Last 30 Days All Railways



Port Terminal Status

Prince Rupert

Daily Activity for 5/6/2018

| | Cars Arrived | Cars Received in Interchange | Cars Delivered in Interchange | Cars Placed for Unloading | Loads on Wheels at Destination As of 5/6/2018 |
|----|--------------|------------------------------|-------------------------------|---------------------------|-----------------------------------------------|
| CN | 211 | | | 210 | 212 |

Port Unloads

| | 05/06 | 05/05 | Week To Date | Last Week |
|----|-------|-------|--------------|-----------|
| CN | 235 | 5 | 1,451 | 1,666 |

Age Profile of Loaded Cars Waiting Placement for Unloading

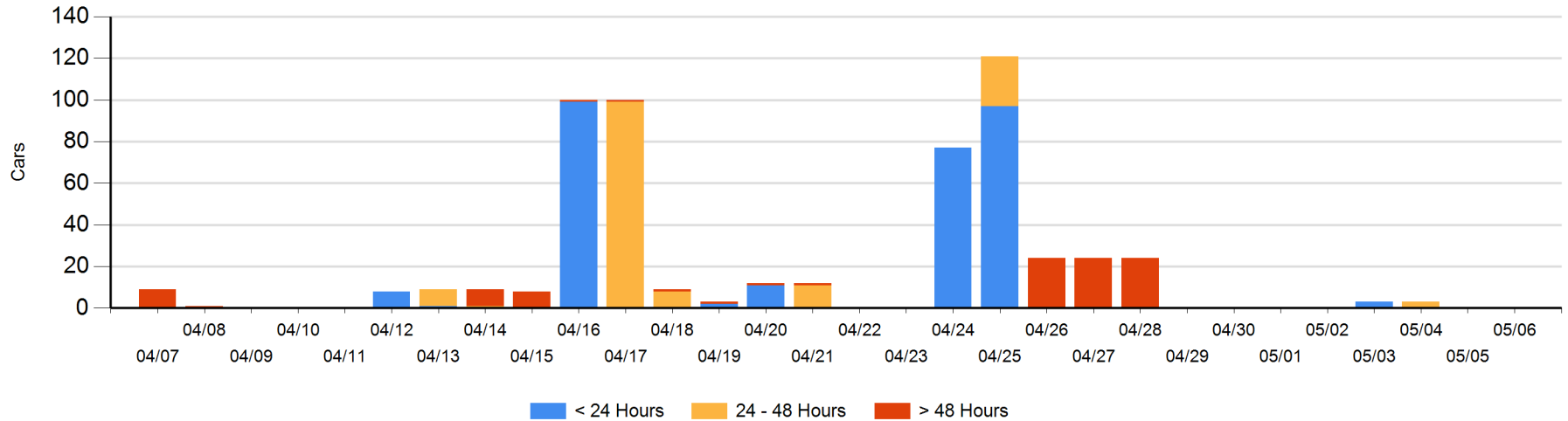
Today

| | < 24 Hrs | 24 - 48 Hrs | > 48-72 Hrs | > 72 Hrs | Total On Hand |
|----|----------|-------------|-------------|----------|---------------|
| CN | | | | | 0 |

Change in Last 24 Hours

| | < 24 Hrs | 24-48 Hrs | 48 - 72 Hrs | > 72 Hrs |
|----|----------|-----------|-------------|----------|
| CN | | | | |

Loaded Cars on Hand Prince Rupert Waiting for Placement - Last 30 Days All Railways



Port Terminal Status

Thunder Bay

Daily Activity for 5/6/2018

| | Cars Arrived | Cars Received in Interchange | Cars Delivered in Interchange | Cars Placed for Unloading | Loads on Wheels at Destination As of 5/6/2018 |
|----|--------------|------------------------------|-------------------------------|---------------------------|-----------------------------------------------|
| CN | 101 | | | 142 | 284 |
| CP | 125 | | | 148 | 324 |

Port Unloads

| | 05/06 | 05/05 | Week To Date | Last Week |
|----|-------|-------|--------------|-----------|
| CN | 1 | | 475 | 354 |
| CP | 63 | 90 | 1,475 | 939 |

Age Profile of Loaded Cars Waiting Placement for Unloading

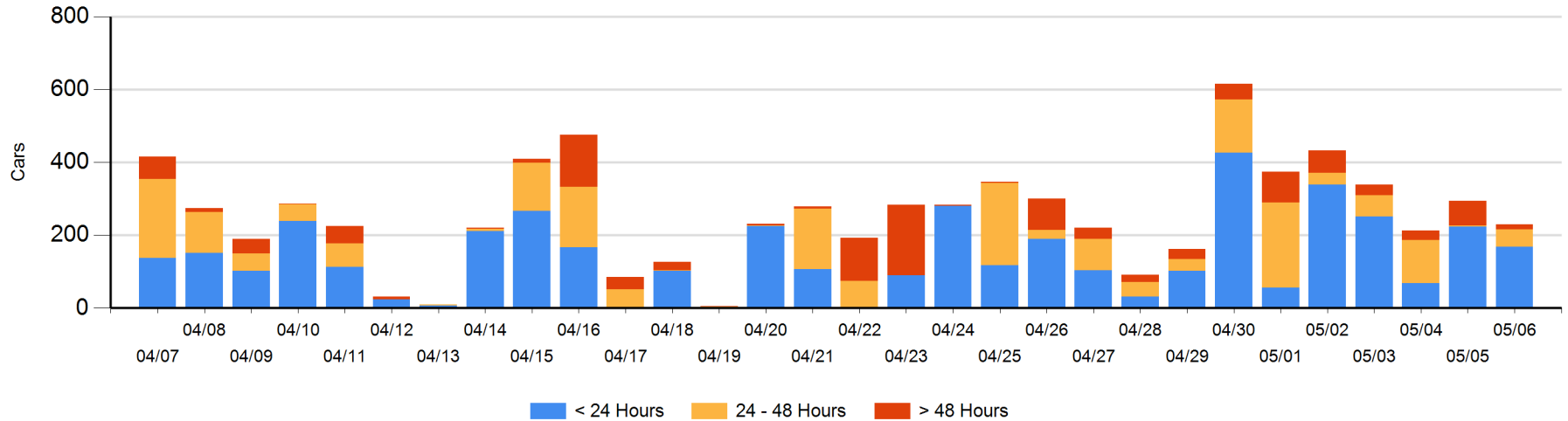
Today

| | < 24 Hrs | 24 - 48 Hrs | > 48-72 Hrs | > 72 Hrs | Total On Hand |
|----|----------|-------------|-------------|----------|---------------|
| CN | 101 | 24 | | 11 | 136 |
| CP | 67 | 24 | 2 | | 93 |

Change in Last 24 Hours

| | < 24 Hrs | 24-48 Hrs | 48 - 72 Hrs | > 72 Hrs |
|----|----------|-----------|-------------|----------|
| CN | -65 | 24 | -2 | 2 |
| CP | 10 | 20 | -53 | -1 |

Loaded Cars on Hand Thunder Bay Waiting for Placement - Last 30 Days All Railways



Measurement Definitions

| | |
|---------------------------------|-----------------------------------------------------------------------------------------------------------------------------------------------------------------------------------------------------------------------------------------------------------------------------------------------------------------------------------------------------------------------------------------|
| Loads on Wheels | <p>Count of loaded rail cars including all rail cars that have been released loaded at origin and have not been reported by the railway as unloaded at destination.</p> <p>Counts include all rail cars (hopper cars and boxcars) moving within a pipeline.</p> |
| Loads Not Moving | <p>Loaded rail cars for which the railways have not reported a movement event for 48 hours or more whether the rail car is at origin, enroute or at destination.</p> |
| Port Unloads | <p>Count of rail cars reported by railways as unloaded at the western port destinations of Vancouver, Prince Rupert and Thunder Bay.</p> <p>Unload counts include all rail cars (hopper cars and boxcars) unloaded by all receivers including major port terminals, transloaders and other receivers.</p> |
| Cars Arrived | <p>Count of rail cars reported as arrived at the destination railway terminal.</p> |
| Cars Received in Interchange | <p>Count of rail cars received in interchange by each railway within a destination railway terminal. Interchange activity is tracked for the Vancouver and Thunder Bay pipelines as applicable.</p> |
| Cars Delivered in Interchange | <p>Count of rail cars delivered in interchange by each railway within a destination railway terminal. Interchange activity is tracked for the Vancouver and Thunder Bay pipelines as applicable.</p> |
| Cars Placed for Unloading | <p>Count of rail cars reported by the railways as placed loaded at the receiver's facility for unloading.</p> |
| Loads on Wheels at Destination | <p>Count of rail cars that remain under load within the destination railway terminal including rail cars that have been reported as placed for unloading but not yet reported as unloaded.</p> |
| Waiting Placement for Unloading | <p>Count of rail cars that have been reported as arrived at the destination railway terminal but not reported as placed for unloading by the railway.</p> <p>For the Ports of Vancouver, Prince Rupert and Thunder Bay the count of rail cars waiting placement for unloading is categorized by age – i.e. the elapsed time from arrival at destination to the current report date.</p> |