

Note to Reader

Daily Network Status reports for last week were not delivered due to a previously undetected technical issue. These reports will be posted to the Ag Transport Coalition website and can be retrieved there if desired. (agtransportcoalition.com)

SPEED READ

- Loads on wheels declined for the third consecutive day reflecting lower volumes on CN and CP. Loads on wheels have declined 12% - nearly 1,200 cars - in the last three days reaching their lowest levels in more than 30 days.
- It is anticipated that CN volumes will continue to decline this week as week 43 hopper car orders fell to their lowest level since August of last year - below 3,000 cars. This is most evident in the Prince Rupert corridor where orders have fallen below 600 cars for week 43 - 40% lower than the 3 week trailing average.
- Network fluidity improved somewhat overnight following a couple of up and down days for both railways. Idle car counts remain near the 2,000 car threshold with 80%+ of all idle cars for both railways destined to Vancouver.
- Western port unloads in week 42 fell more than 900 unloads short of the prior week coming in just below 7,300 for the week. This reflect lower unloads at Vancouver and Thunder Bay offset by a slight improvement week over week at Prince Rupert.

=====

Loads on Wheels

- Loads on wheels declined for the third consecutive day falling 5% (493 cars) overnight - now at 8,683 - the lowest level in more than 30 days and 13% below the trailing 30 day average
- The change in loads on wheels reflects lower volumes on both CN (-217) and CP (-301).
- On a net basis the decline in loads on wheels reflects lower volumes in all corridors.
- CN volumes declined in three of five corridors led by Prince Rupert (-129) . System wide CN loads on wheels now at 4,438 - 8% below the trailing 30 day average.
- CP volumes fell across the board reflecting nominal declines in all corridors. CP system wide loads on wheels now at 3,790 - below the 4,000 car threshold for the first time in more than 30 days and 20% below the trailing 30 day average.
- Vancouver now at 5,041 - the lowest level in more than 30 days and 16% below the trailing 30 day average.
- The Prince Rupert pipeline currently sits at 1,158 - above the 1,100 car threshold for the third consecutive day and in line with the trailing 30 day average.
- Thunder Bay volumes down slightly for the fourth consecutive day remaining above the 1,000 car threshold - 20% below the trailing 30 day average - 60% of traffic moving on CP.

Hopper Car Rationing

- No hopper car rationing has been reported for either CN or CP in week 41.

Loads Not Moving

- **The count of cars not moving for 48+ hours declined by 17% (394 cars) reflecting declines on both CN and CP. As recently as two days ago idle car counts jumped by more than 1,000 cars overnight rising above 2,200 cars. The count of idle cars now stands at 1,889.**
- CN
 - **The count of idle cars declined 12% (140 cars) on the heels of rising above 1,100 cars two days ago - the highest level seen in more than**

30 days. Idle car counts now at 991.

- The number of cars idle for 4+ days down 20% overnight - remains above 350 cars.
- The count of cars not moving for 7+ days unchanged - above 200 cars for the 4th consecutive day reflecting cars being held on line enroute to Vancouver.
- Vancouver represents 80% of all idle cars with the majority of cars dwelling on line.
- CP
 - **CP counts declined 22% (254 cars) overnight. As was the case with CN, CP counts had risen significantly two days ago to more than 1,100 cars. The count of idle cars on CP now at 898.**
 - The number of cars idle for 4+ days up 66% overnight - remains above 300 cars.
 - The count of cars idle for 7+ days below 50 cars.
 - Vancouver continues to account for the majority of all idle cars (80%).
 - In total only 30% of all idle cars are dwelling at origin locations.

Port Performance

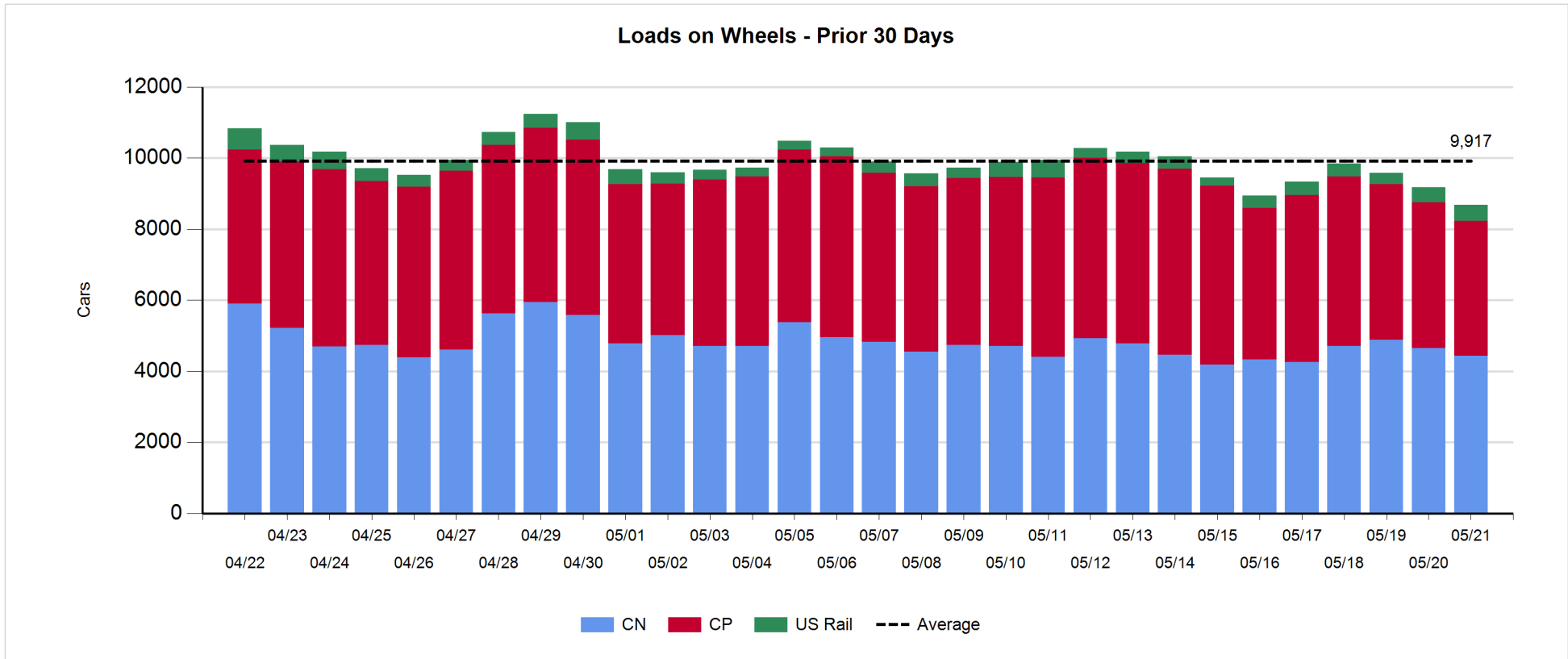
- CN and CP reported a total of 1,184 cars unloaded at the three western ports. Week 42 unloads came in just below 7,300 some 900 unloads lower than the prior week reflecting lower unloads at Thunder Bay and Vancouver while Prince Rupert unloads exceeded the prior week by a little more than 100 cars. One day in to week 43 unloads are tracking nominally behind last week.
- Vancouver
 - 963 cars reported unloaded by CN and CP at the Port of Vancouver; CN - 478 and CP - 485.
 - There are nearly 900 cars on hand at Vancouver waiting placement for unloading - with fewer than 400 cars arriving at the port in the last 24 hours.
 - CN and CP have 1,600 cars enroute to Vancouver west of Alberta - 1,100+ Kamloops and west - with traffic split evenly between the railways.
- Prince Rupert
 - Prince Rupert unloads were below 200 for the 14th consecutive day since the beginning of scheduled maintenance resultng in reduced unload capacity. Having said this unloads last week came in at 950 - roughly 100 unloads higher than the prior week.
 - Loads on wheels above 1,100 cars for the third consecutive day.
 - There are fewer than 150 cars west of Jasper - 90% west of Prince George.
 - Given the cars on hand and the location of cars enroute - assuming timely movement of inbound traffic it is expected that Rupert unloads should maintain at this pace given the reduced unload capacity due to ongoing maintenance.
- Thunder Bay
 - 91 unloads reported by CN and CP yesterday - week 42 unloads fell more than 400 unloads short of the prior week's performance coming in around 1,300 cars.
 - There are currently 500+ cars on hand waiting placement for unload with only 200+ cars arriving at the Port in the last 24 hours.
 - There are 250+ cars enroute to Thunder Bay - half of which are Winnipeg and east.
 - Given the cars on hand at the Port and the status of the inbound pipeline we would expect to see robust unloading performance in the coming days.

Daily Loads on Wheels - 5/21/2018

	E Canada	Prince Rupert	Thunder Bay	USA/MEX	Vancouver	Total
CN	389	1,158	410	90	2,391	4,438
CP	136		616	410	2,628	3,790
Short Line	30				22	52
US Rail				403		403
	555	1,158	1,026	903	5,041	8,683

Change in Loads on Wheels - Prior 24 Hours

	E Canada	Prince Rupert	Thunder Bay	USA/MEX	Vancouver	Total
CN	1	-129	0	-26	-63	-217
CP	-16		-91	-96	-98	-301
Short Line	1				-8	-7
US Rail				32		32
	-14	-129	-91	-90	-169	-493

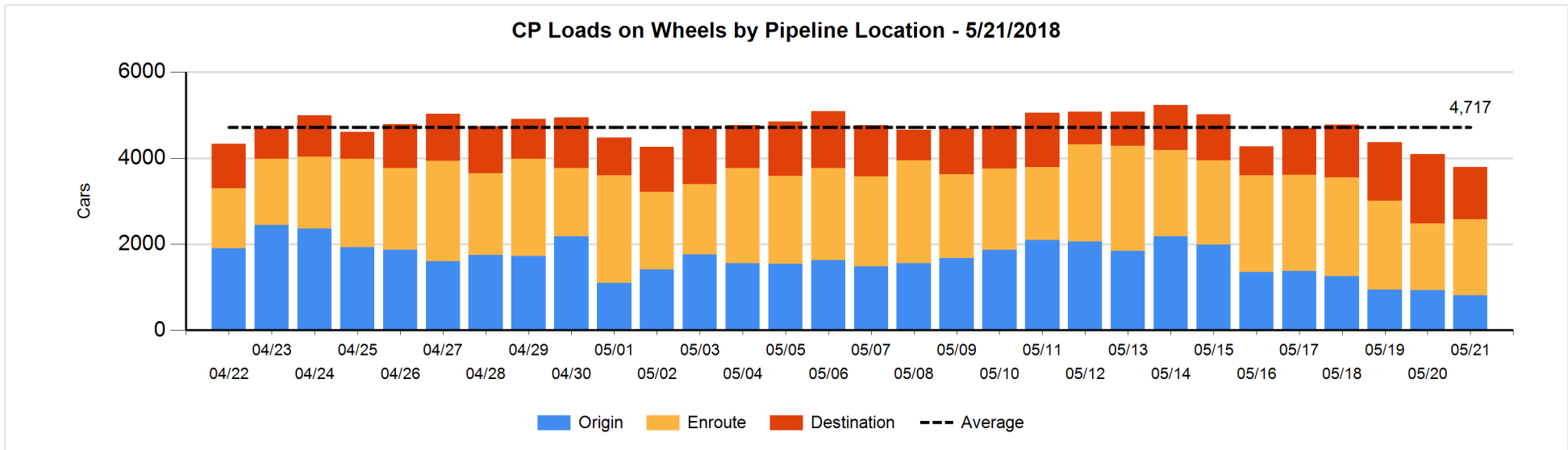
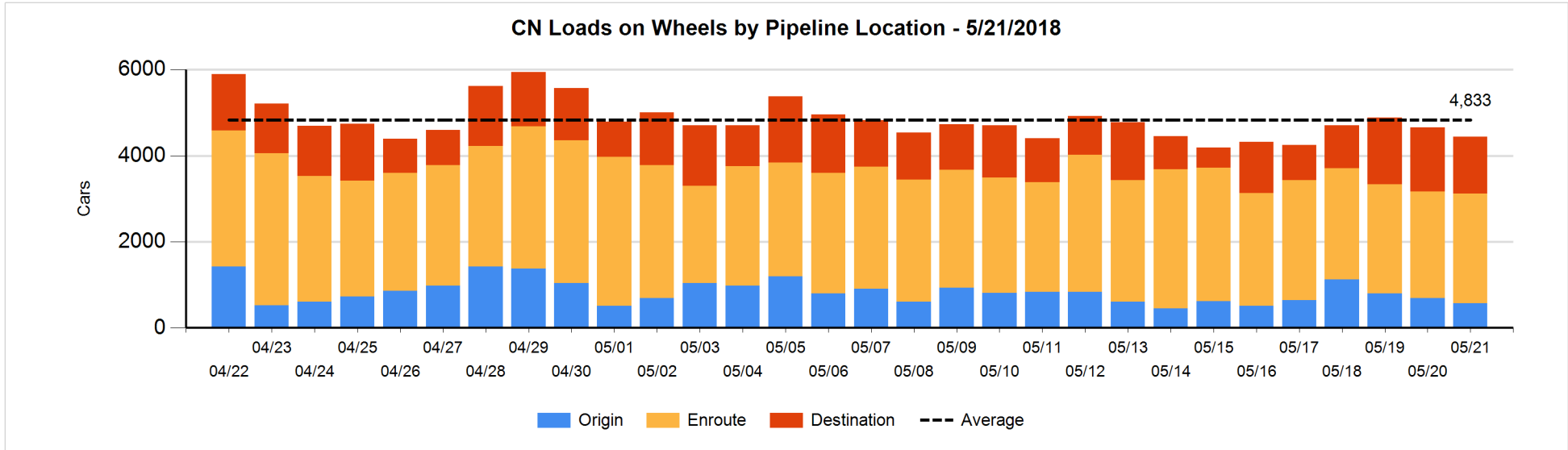


Daily Loads on Wheels By Pipeline Location - 5/21/2018

	E Canada	Prince Rupert	Thunder Bay	USA/MEX	Vancouver	Total
CN						
Origin	3			2	560	565
Enroute	292	792	147	82	1,239	2,552
Destination	94	366	263	6	592	1,321
	389	1,158	410	90	2,391	4,438
CP						
Origin	58		7	93	656	814
Enroute	76		138	295	1,257	1,766
Destination	2		471	22	715	1,210
	136		616	410	2,628	3,790
US Rail / Short Line						
Origin						
Enroute	2			220		222
Destination	28			183	22	233
	30			403	22	455

Change in Daily Loads on Wheels By Pipeline Location - Prior 24 Hours

	E Canada	Prince Rupert	Thunder Bay	USA/MEX	Vancouver	Total
CN						
Origin	-25	-307		1	210	-121
Enroute	20	193	-127	-11	-7	68
Destination	6	-15	127	-16	-266	-164
	1	-129	0	-26	-63	-217
CP						
Origin	0		-132	-19	31	-120
Enroute	0		44	-72	249	221
Destination	-16		-3	-5	-378	-402
	-16		-91	-96	-98	-301
US Rail / Short Line						
Origin						
Enroute	0			87		87
Destination	1			-55	-8	-62
	1			32	-8	25

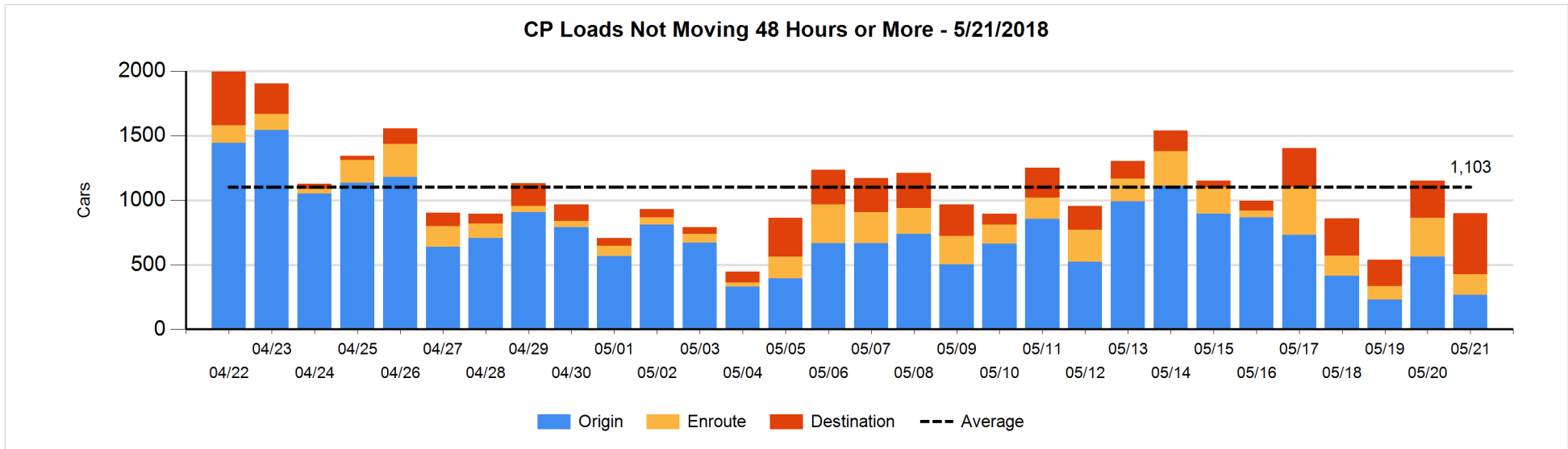
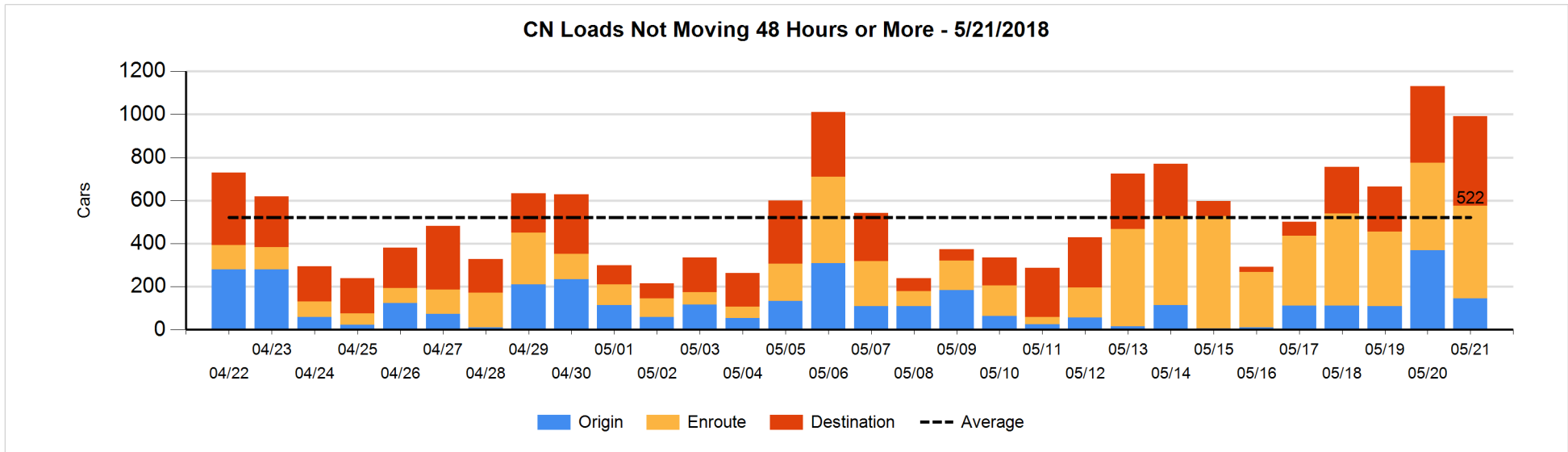


Loads Not Moving 48 Hours or More - 5/21/2018

	E Canada	Prince Rupert	Thunder Bay	USA/MEX	Vancouver	Total
CN						
Origin	3			1	141	145
Enroute	28	18	2	13	369	430
Destination	23	100	1	1	291	416
	54	118	3	15	801	991
CP						
Origin	58		7	67	135	267
Enroute			6	25	129	160
Destination	2			22	447	471
	60		13	114	711	898
US Rail / Short Line						
Origin						
Enroute	1			35		36
Destination	27			61	9	97
	28			96	9	133

Change in Loads Not Moving 48 Hours or More - 5/21/2018

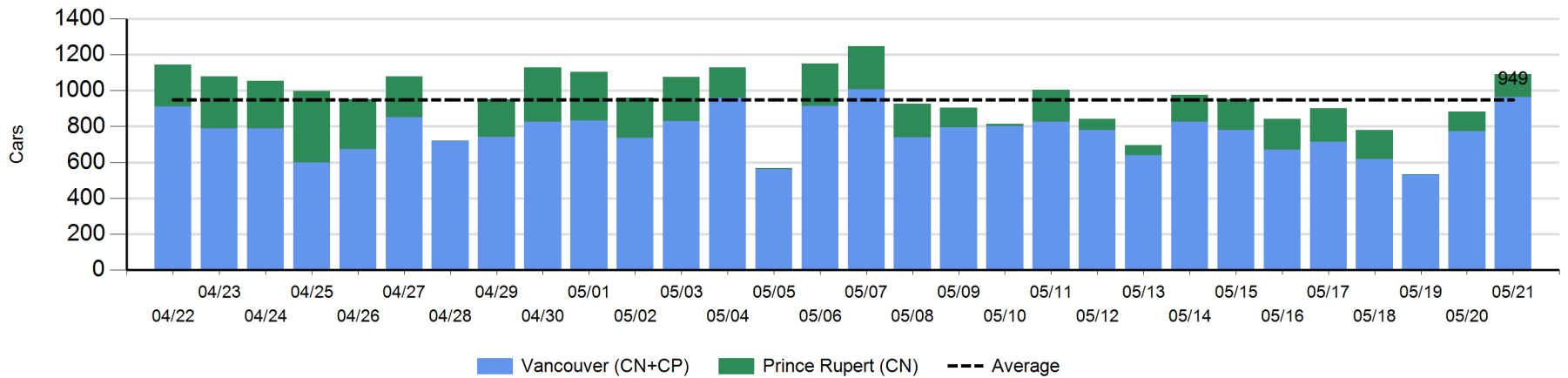
	E Canada	Prince Rupert	Thunder Bay	USA/MEX	Vancouver	Total
CN						
Origin	-24	-203		0	3	-224
Enroute	18	-11	2	3	13	25
Destination	-21	-66	0	-6	152	59
	-27	-280	2	-3	168	-140
CP						
Origin	0		-21	-20	-253	-294
Enroute	-36		-3	-18	-86	-143
Destination	0		-21	-5	209	183
	-36		-45	-43	-130	-254
US Rail / Short Line						
Origin						
Enroute	0			5		5
Destination	16			20	-1	35
	16			25	-1	40



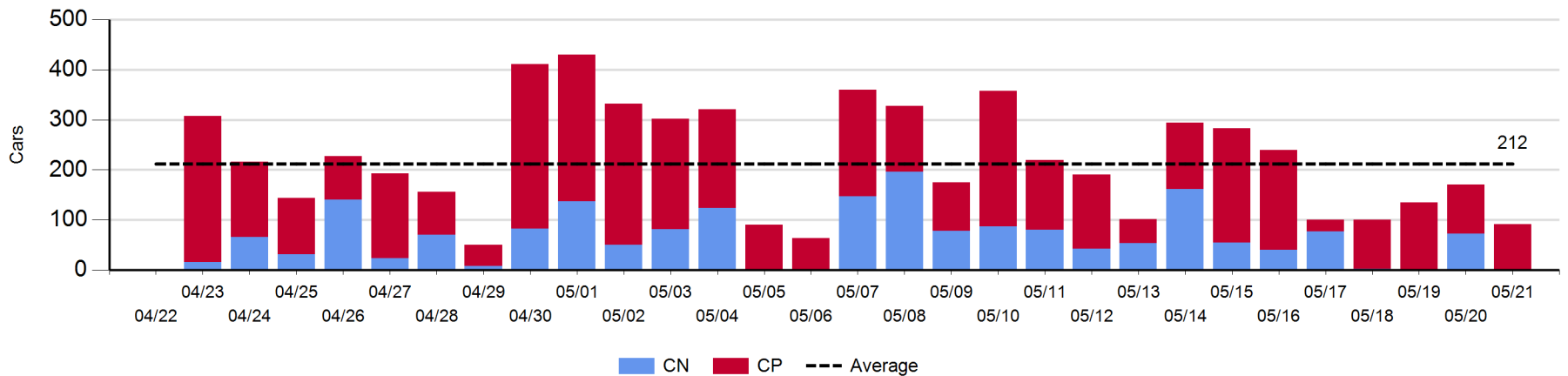
Port Unloads - 5/21/2018

	Prince Rupert	Vancouver	West Coast Total	Thunder Bay	Total
CN	130	478	608		608
CP		485	485	91	576
	130	963	1,093	91	1,184

West Coast Port Unloads - Prior 30 Days



Thunder Bay Port Unloads - Prior 30 Days



Port Terminal Status

Vancouver

Daily Activity for 5/21/2018

	Cars Arrived	Cars Received in Interchange	Cars Delivered in Interchange	Cars Placed for Unloading	Loads on Wheels at Destination As of 5/21/2018
CN	281	116	109	391	592
CP	117	104	116	430	715
SRY	1	5		11	22

Port Unloads

	05/21	05/20	Week To Date	Last Week
CN	478	413	478	2,264
CP	485	362	485	2,651
SRY	15	3	15	82

Age Profile of Loaded Cars Waiting Placement for Unloading

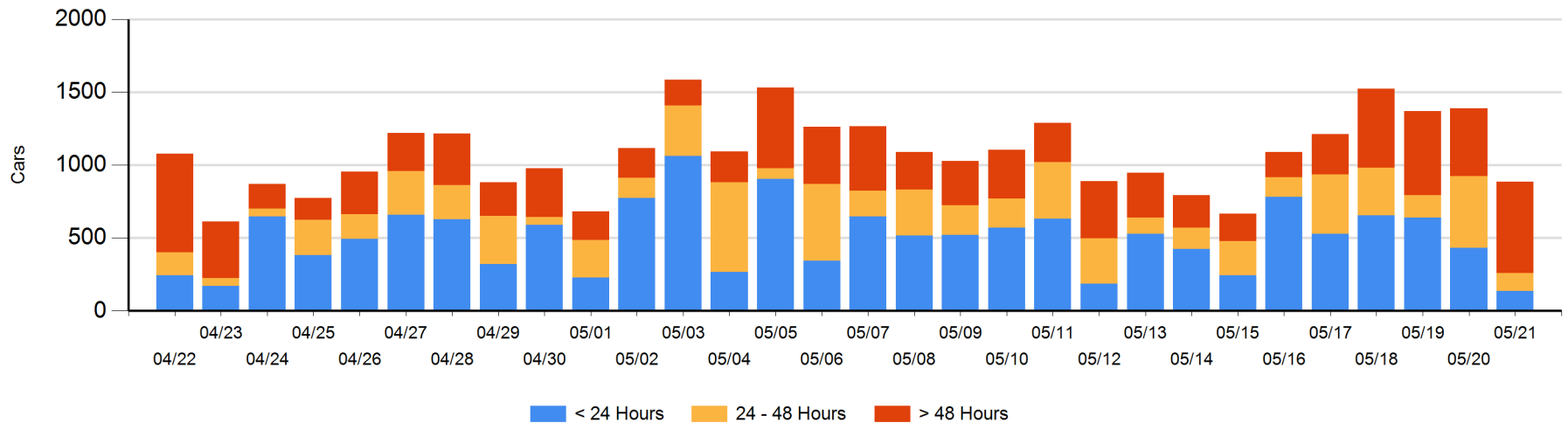
Today

	< 24 Hrs	24 - 48 Hrs	> 48-72 Hrs	> 72 Hrs	Total On Hand
CN	121	59	197	111	488
CP	14	66	141	176	397
SRY					0

Change in Last 24 Hours

	< 24 Hrs	24-48 Hrs	48 - 72 Hrs	> 72 Hrs
CN	-135	-211	121	17
CP	-164	-155	102	-79
SRY				

Loaded Cars on Hand Vancouver Waiting for Placement - Last 30 Days All Railways



Port Terminal Status

Prince Rupert

Daily Activity for 5/21/2018

	Cars Arrived	Cars Received in Interchange	Cars Delivered in Interchange	Cars Placed for Unloading	Loads on Wheels at Destination As of 5/21/2018
CN	156			98	366

Port Unloads

	05/21	05/20	Week To Date	Last Week
CN	130	108	130	950

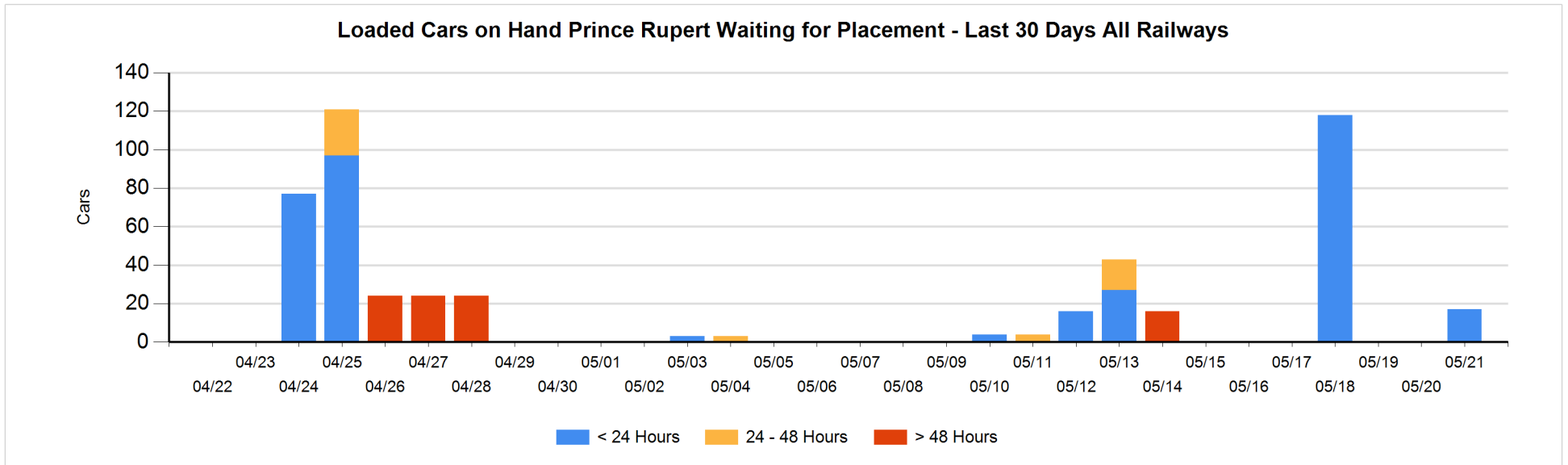
Age Profile of Loaded Cars Waiting Placement for Unloading

Today

	< 24 Hrs	24 - 48 Hrs	> 48-72 Hrs	> 72 Hrs	Total On Hand
CN	17				17

Change in Last 24 Hours

	< 24 Hrs	24-48 Hrs	48 - 72 Hrs	> 72 Hrs
CN	17			



Port Terminal Status

Thunder Bay

Daily Activity for 5/21/2018

	Cars Arrived	Cars Received in Interchange	Cars Delivered in Interchange	Cars Placed for Unloading	Loads on Wheels at Destination As of 5/21/2018
CN	127			40	263
CP	88				471

Port Unloads

	05/21	05/20	Week To Date	Last Week
CN		72		408
CP	91	99	91	915

Age Profile of Loaded Cars Waiting Placement for Unloading

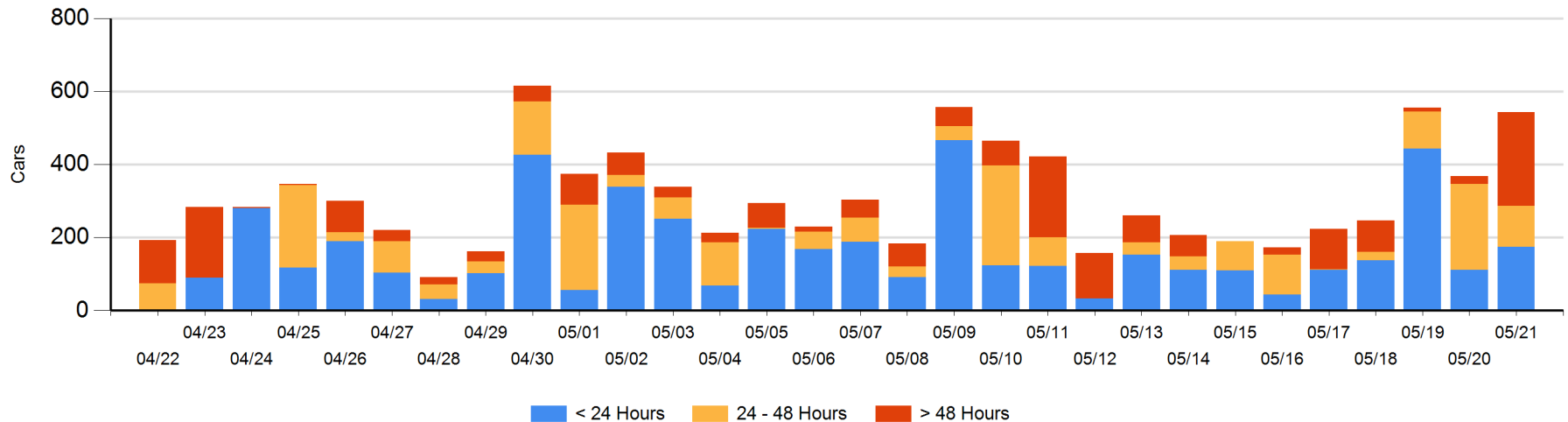
Today

	< 24 Hrs	24 - 48 Hrs	> 48-72 Hrs	> 72 Hrs	Total On Hand
CN	87				87
CP	88	112	235	21	456

Change in Last 24 Hours

	< 24 Hrs	24-48 Hrs	48 - 72 Hrs	> 72 Hrs
CN	87			
CP	-24	-123	225	10

Loaded Cars on Hand Thunder Bay Waiting for Placement - Last 30 Days All Railways



Measurement Definitions

Loads on Wheels	<p>Count of loaded rail cars including all rail cars that have been released loaded at origin and have not been reported by the railway as unloaded at destination.</p> <p>Counts include all rail cars (hopper cars and boxcars) moving within a pipeline.</p>
Loads Not Moving	<p>Loaded rail cars for which the railways have not reported a movement event for 48 hours or more whether the rail car is at origin, enroute or at destination.</p>
Port Unloads	<p>Count of rail cars reported by railways as unloaded at the western port destinations of Vancouver, Prince Rupert and Thunder Bay.</p> <p>Unload counts include all rail cars (hopper cars and boxcars) unloaded by all receivers including major port terminals, transloaders and other receivers.</p>
Cars Arrived	<p>Count of rail cars reported as arrived at the destination railway terminal.</p>
Cars Received in Interchange	<p>Count of rail cars received in interchange by each railway within a destination railway terminal. Interchange activity is tracked for the Vancouver and Thunder Bay pipelines as applicable.</p>
Cars Delivered in Interchange	<p>Count of rail cars delivered in interchange by each railway within a destination railway terminal. Interchange activity is tracked for the Vancouver and Thunder Bay pipelines as applicable.</p>
Cars Placed for Unloading	<p>Count of rail cars reported by the railways as placed loaded at the receiver's facility for unloading.</p>
Loads on Wheels at Destination	<p>Count of rail cars that remain under load within the destination railway terminal including rail cars that have been reported as placed for unloading but not yet reported as unloaded.</p>
Waiting Placement for Unloading	<p>Count of rail cars that have been reported as arrived at the destination railway terminal but not reported as placed for unloading by the railway.</p> <p>For the Ports of Vancouver, Prince Rupert and Thunder Bay the count of rail cars waiting placement for unloading is categorized by age – i.e. the elapsed time from arrival at destination to the current report date.</p>