

## SPEED READ

- Loads on wheels increased for the first time in five days yesterday reflecting lower volumes on CN and higher volumes on CP. The increase is attributable primarily to increased volumes in the Vancouver and Thunder Bay corridors.
- Network fluidity deteriorated somewhat with the count of idle cars rising on both railways by a total of more than 600 cars reversing to some extent the improvements seen in recent days.
- Western port unloads in week 42 continue to lag the prior week by some 500 unloads through 4 days led by reduced unloads at both Vancouver and Thunder Bay which trail last week to date by more than 300 unloads each offset by higher unloads at Prince Rupert.
- Shipper demand continues to be lower in the Prince Rupert corridor with total orders for week 42 once again below the 1,000 car threshold for the third consecutive week. This compares to a weekly average of 1,500 for the preceding four weeks.

---

## Loads on Wheels

- Loads on wheels increased for the first time in five days rising 4% (402 cars) overnight - now at 9,336 - 8% below the trailing 30 day average
- The change in loads on wheels reflects slightly lower volumes on CN (-70) and higher volumes on CP (+435).
- On a net basis the increase in loads on wheels reflects higher volumes in all corridors other than the US which remained effectively unchanged.
- CN volumes changed little on a net basis reflecting lower volumes in the Vancouver corridor (-216) offset by increases in other corridors. System wide CN loads on wheels now at 4,254 - 14% below the trailing 30 day average.
- CP volumes rose 10% overnight reflecting higher volumes in the Vancouver (+377) and Thunder Bay (+90) corridors. CP system wide loads on wheels now at 4,706 - 2% below the trailing 30 day average.
- Vancouver now at 5,872 - 3% below the trailing 30 day average.
- The Prince Rupert pipeline currently sits at 950 - 22% below the trailing 30 day average.
- Thunder Bay volumes up for the first time in five days rising 22% and returning near the 1,000 car threshold - 19% below the trailing 30 day average - 60% of traffic moving on CP.

## Hopper Car Rationing

- No hopper car rationing by CN occurred in week 40 although evidence of rationing is now appearing on CP.

## Loads Not Moving

- **The count of cars not moving for 48+ hours increased 48% (615 cars) reflecting increases on both CN and CP. The count of idle cars now stands at 1,904.**
- CN
  - **The count of idle cars jumped 70% (208 cars) reversing yesterday's gains. Idle car counts now at 500 with 60% of all cars dwelling on line at intermediate stations primarily in the Vancouver corridor.**
  - The number of cars idle for 4+ days unchanged overnight - remains above 250 cars.
  - The count of cars not moving for 7+ days unchanged - remains below 25 cars.
  - Vancouver represents 87% of all idle cars with the majority of cars dwelling on line.
- CP
  - **CP counts increased 40% (407 cars) overnight. The count of idle cars on CP now at 1,404.**

- The number of cars idle for 4+ days down 30% overnight falling below 400 cars.
- The count of cars idle for 7+ days below 100 cars.
- Vancouver continues to account for the majority of all idle cars (75%).
- In total 52% of all idle cars are dwelling at origin locations.

### **Port Performance**

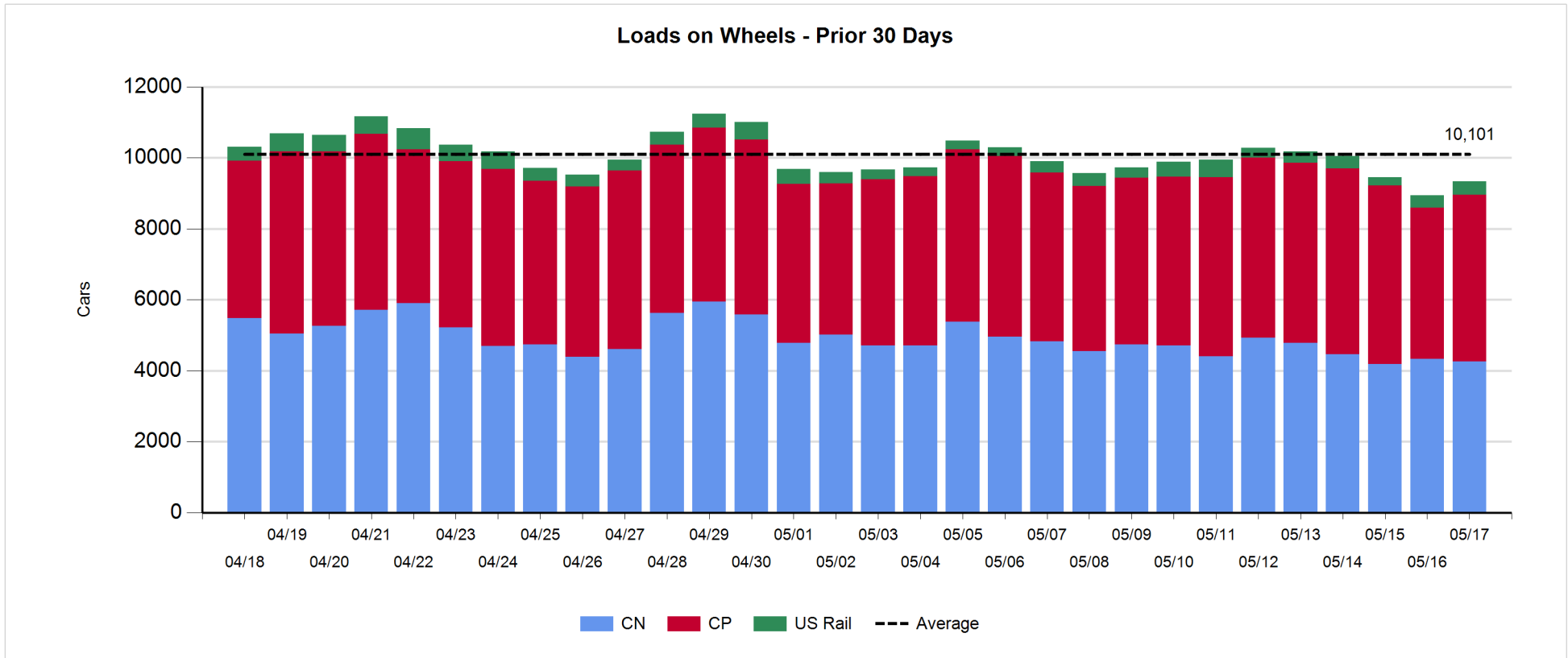
- CN and CP reported a total of 1,001 cars unloaded at the three western ports - through four days week 42 unloads now trail last week's pace by almost 500 unloads reflecting higher unloads at Prince Rupert and lower unloads at Vancouver and Thunder Bay.
- Vancouver
  - 713 cars reported unloaded by CN and CP at the Port of Vancouver; CN - 398 and CP - 315.
  - There are nearly 1,200+ cars on hand at Vancouver waiting placement for unloading - with nearly 700 cars arriving at the port in the last 24 hours.
  - CN and CP have 1,600 cars enroute to Vancouver west of Alberta - 600+ Kamloops and west - with traffic split evenly between the railways.
- Prince Rupert
  - Prince Rupert unloads were below 200 for the fourth consecutive day this week and now are tracking 125 unloads ahead of last week's pace week to date.
  - Loads on wheels remain below 1,000 cars.
  - There are fewer than 300 cars west of Jasper - all west of Prince George.
  - Given the cars on hand and the location of cars enroute - assuming timely movement of inbound traffic it is expected that Rupert unloads should maintain at this pace given the reduced unload capacity due to ongoing maintenance.
- Thunder Bay
  - 100 unloads reported by CN and CP yesterday - week 42 unloads now trail last week's performance by approximately 300 unloads.
  - There are currently 200+ cars on hand waiting placement for unload with only 111 cars arriving at the Port in the last 24 hours.
  - There are 650 cars enroute to Thunder Bay - only 100 Winnipeg and east.
  - Given the cars on hand at the Port and the status of the inbound pipeline we would expect to see unloads around 200 per day in the coming days.

**Daily Loads on Wheels - 5/17/2018**

	E Canada	Prince Rupert	Thunder Bay	USA/MEX	Vancouver	Total
CN	362	950	380	153	2,409	4,254
CP	96		648	531	3,431	4,706
Short Line	35				32	67
US Rail				309		309
	493	950	1,028	993	5,872	9,336

**Change in Loads on Wheels - Prior 24 Hours**

	E Canada	Prince Rupert	Thunder Bay	USA/MEX	Vancouver	Total
CN	38	17	97	-6	-216	-70
CP	-25		90	-7	377	435
Short Line	28				2	30
US Rail				7		7
	41	17	187	-6	163	402

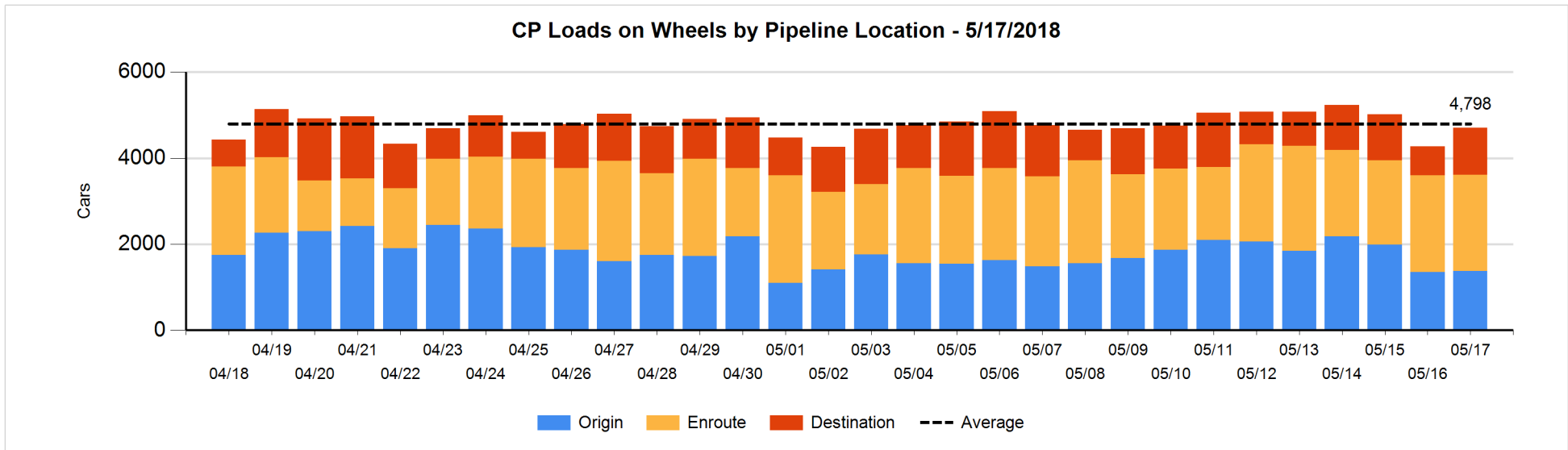
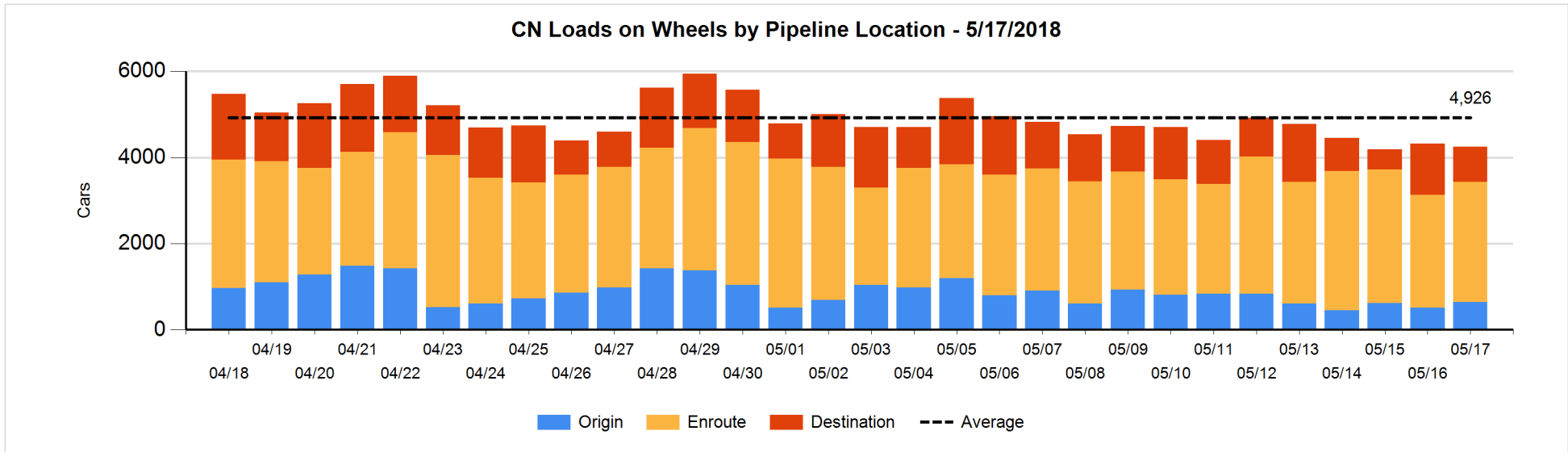


**Daily Loads on Wheels By Pipeline Location - 5/17/2018**

	E Canada	Prince Rupert	Thunder Bay	USA/MEX	Vancouver	Total
CN						
Origin	8	209	99	11	311	638
Enroute	313	538	278	132	1,537	2,798
Destination	41	203	3	10	561	818
	362	950	380	153	2,409	4,254
CP						
Origin			57	207	1,116	1,380
Enroute	96		368	272	1,491	2,227
Destination			223	52	824	1,099
	96		648	531	3,431	4,706
US Rail / Short Line						
Origin						
Enroute	1			229		230
Destination	34			80	32	146
	35			309	32	376

**Change in Daily Loads on Wheels By Pipeline Location - Prior 24 Hours**

	E Canada	Prince Rupert	Thunder Bay	USA/MEX	Vancouver	Total
CN						
Origin	-19	4	48	8	90	131
Enroute	32	-80	127	-8	101	172
Destination	25	93	-78	-6	-407	-373
	38	17	97	-6	-216	-70
CP						
Origin	-16		-97	51	92	30
Enroute	-9		97	-21	-93	-26
Destination			90	-37	378	431
	-25		90	-7	377	435
US Rail / Short Line						
Origin						
Enroute	0			27		27
Destination	28			-20	2	10
	28			7	2	37

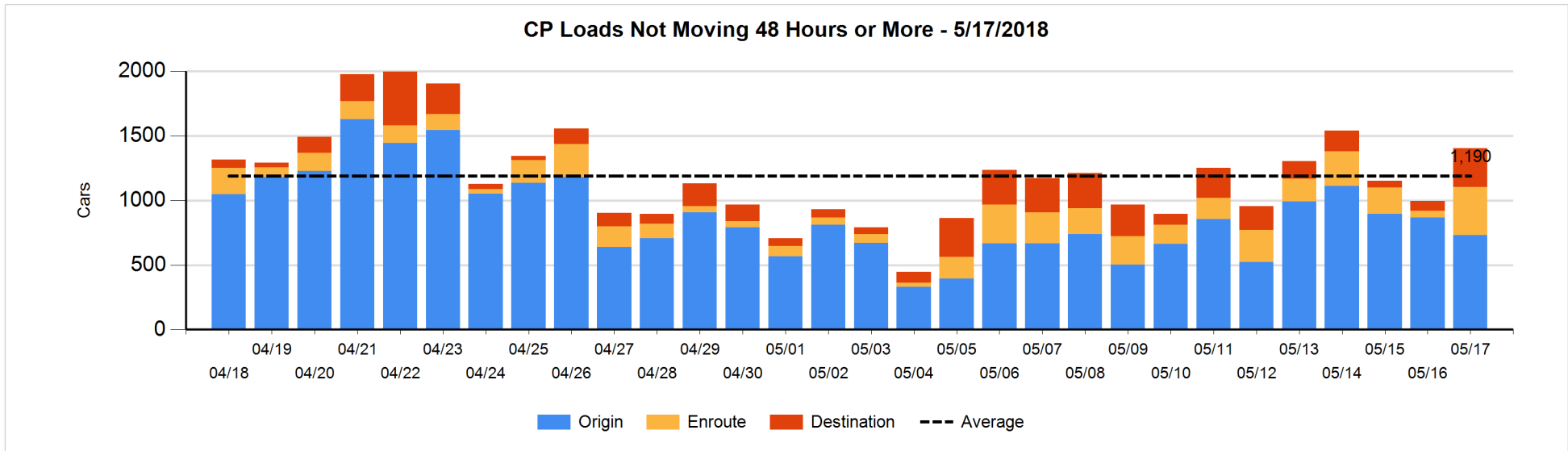
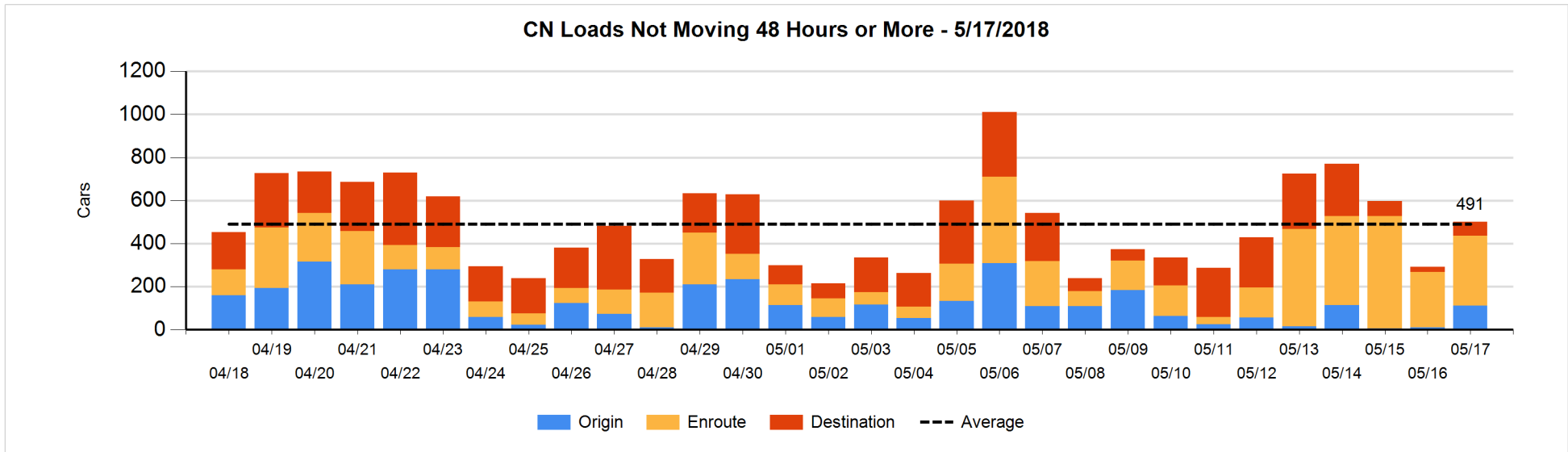


**Loads Not Moving 48 Hours or More - 5/17/2018**

	E Canada	Prince Rupert	Thunder Bay	USA/MEX	Vancouver	Total
<b>CN</b>						
Origin	4			1	107	112
Enroute	3	11		21	290	325
Destination	1	16	1	7	38	63
	8	27	1	29	435	500
<b>CP</b>						
Origin			57	113	562	732
Enroute	34		7	15	314	370
Destination			111	28	163	302
	34		175	156	1039	1404
<b>US Rail / Short Line</b>						
Origin						
Enroute				38		38
Destination	6			29	5	40
	6			67	5	78

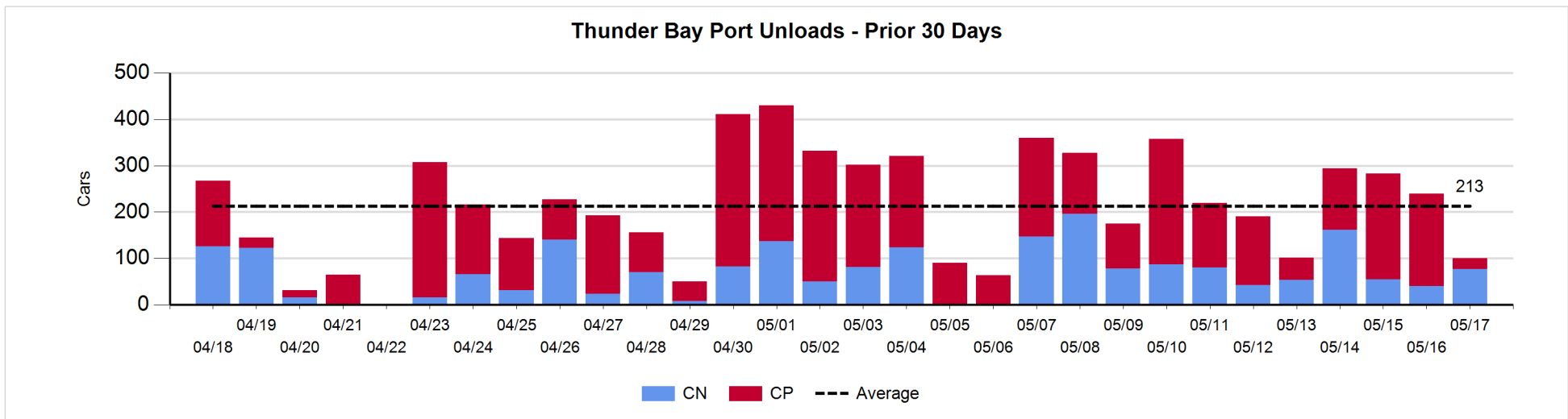
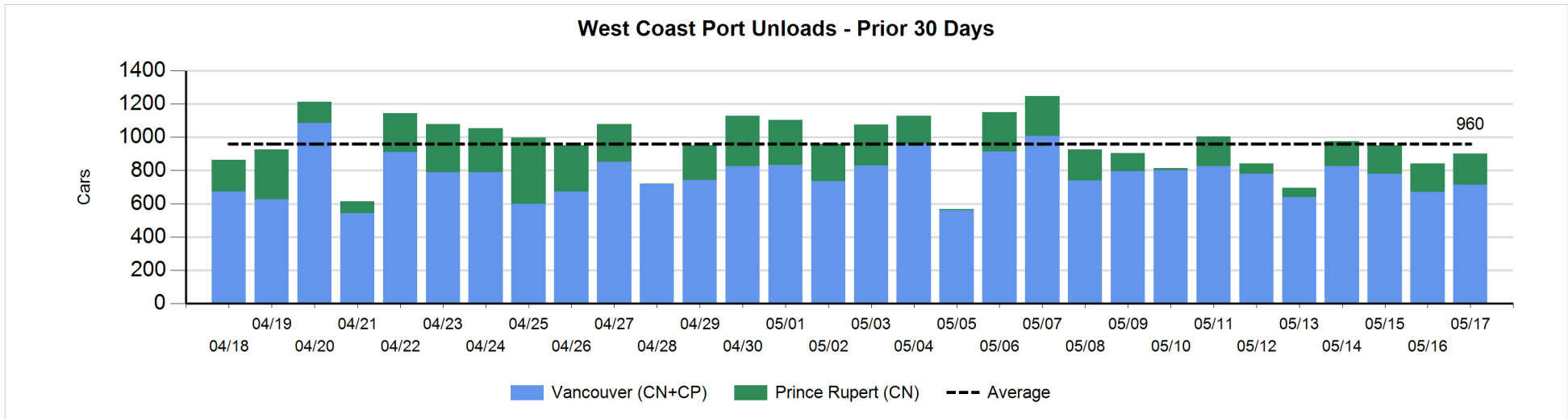
**Change in Loads Not Moving 48 Hours or More - 5/17/2018**

	E Canada	Prince Rupert	Thunder Bay	USA/MEX	Vancouver	Total
<b>CN</b>						
Origin	3			0	98	101
Enroute	1	-4		-2	72	67
Destination	0	14	0	0	26	40
	4	10	0	-2	196	208
<b>CP</b>						
Origin	-16		0	2	-120	-134
Enroute	12		4	-4	306	318
Destination			91	-2	134	223
	-4		95	-4	320	407
<b>US Rail / Short Line</b>						
Origin						
Enroute				-3		-3
Destination	1			-3	-5	-7
	1			-6	-5	-10



**Port Unloads - 5/17/2018**

	Prince Rupert	Vancouver	West Coast Total	Thunder Bay	Total
CN	188	398	586	77	663
CP		315	315	23	338
	188	713	901	100	1,001





**Port Terminal Status**

**Vancouver**

Daily Activity for 5/17/2018

	Cars Arrived	Cars Received in Interchange	Cars Delivered in Interchange	Cars Placed for Unloading	Loads on Wheels at Destination As of 5/17/2018
CN	90	11	130	297	561
CP	601	130	11	259	824
SRY				10	32

**Port Unloads**

	05/17	05/16	Week To Date	Last Week
CN	398	244	1,454	2,534
CP	315	428	1,539	3,054
SRY	7	15	56	35

**Age Profile of Loaded Cars Waiting Placement for Unloading**

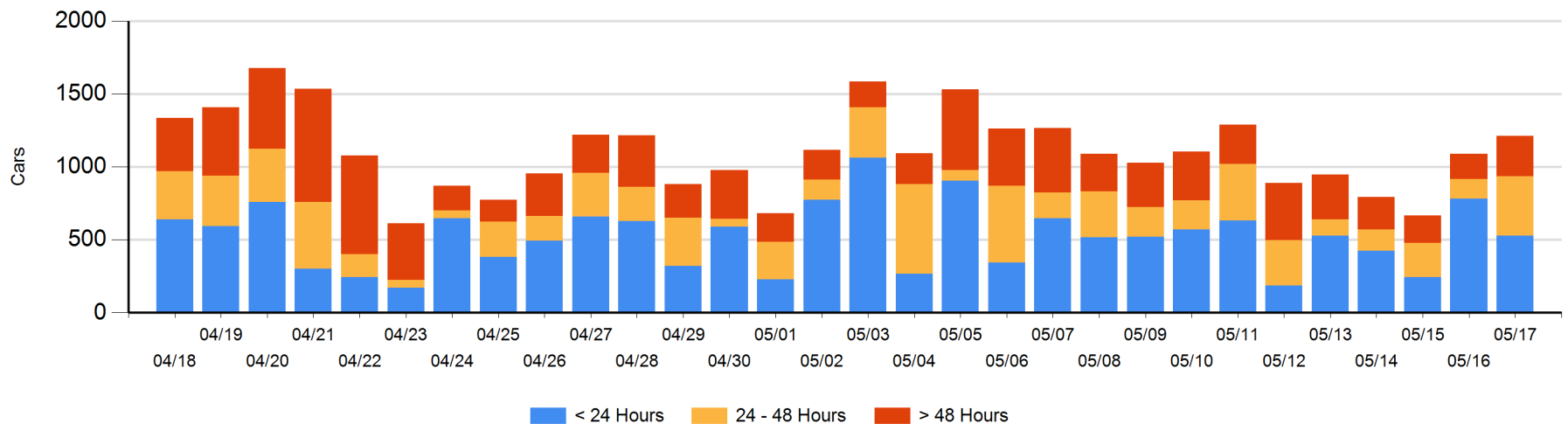
**Today**

	< 24 Hrs	24 - 48 Hrs	> 48-72 Hrs	> 72 Hrs	Total On Hand
CN	85	247	82	66	480
CP	442	163	32	95	732
SRY					0

**Change in Last 24 Hours**

	< 24 Hrs	24-48 Hrs	48 - 72 Hrs	> 72 Hrs
CN	-374	162	39	32
CP	118	114	-53	84
SRY				

**Loaded Cars on Hand Vancouver Waiting for Placement - Last 30 Days All Railways**



**Port Terminal Status**

**Prince Rupert**

Daily Activity for 5/17/2018

	Cars Arrived	Cars Received in Interchange	Cars Delivered in Interchange	Cars Placed for Unloading	Loads on Wheels at Destination As of 5/17/2018
CN	281			281	203

**Port Unloads**

	05/17	05/16	Week To Date	Last Week
CN	188	169	675	843

**Age Profile of Loaded Cars Waiting Placement for Unloading**

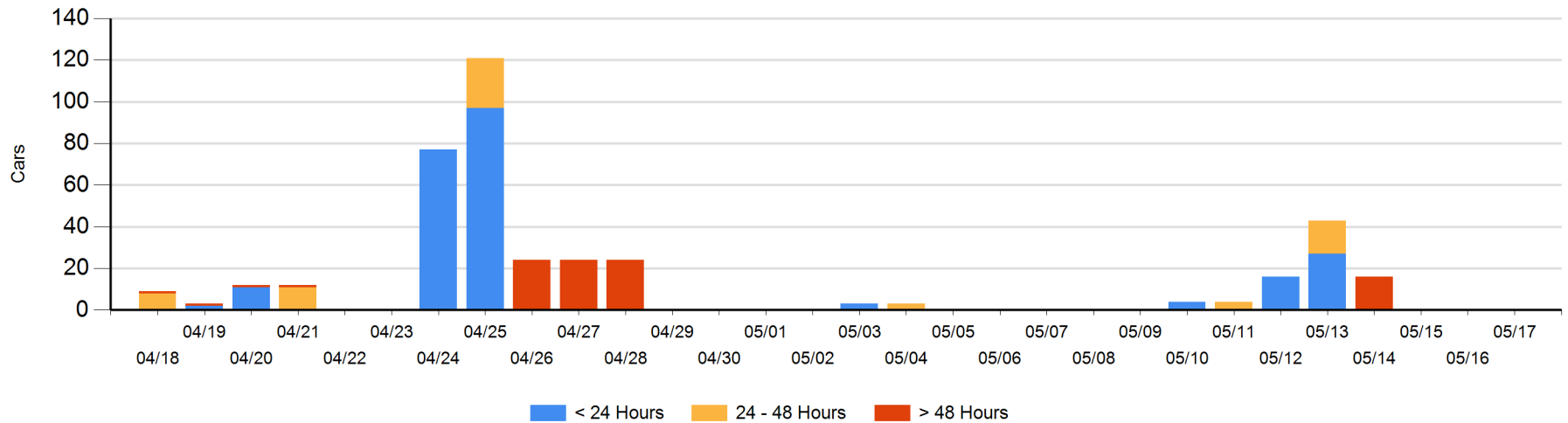
**Today**

	< 24 Hrs	24 - 48 Hrs	> 48-72 Hrs	> 72 Hrs	Total On Hand
CN					0

**Change in Last 24 Hours**

	< 24 Hrs	24-48 Hrs	48 - 72 Hrs	> 72 Hrs
CN				

Loaded Cars on Hand Prince Rupert Waiting for Placement - Last 30 Days All Railways



**Port Terminal Status**

**Thunder Bay**

Daily Activity for 5/17/2018

	Cars Arrived	Cars Received in Interchange	Cars Delivered in Interchange	Cars Placed for Unloading	Loads on Wheels at Destination As of 5/17/2018
CN				41	3
CP	111			19	223

**Port Unloads**

	05/17	05/16	Week To Date	Last Week
CN	77	40	334	685
CP	23	200	583	1,047

**Age Profile of Loaded Cars Waiting Placement for Unloading**

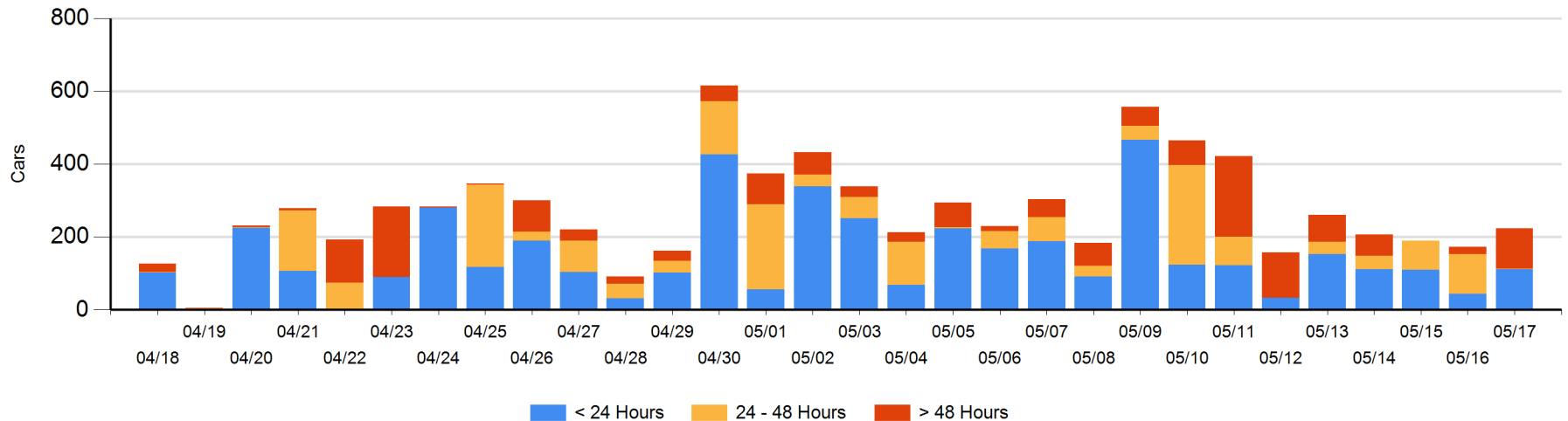
**Today**

	< 24 Hrs	24 - 48 Hrs	> 48-72 Hrs	> 72 Hrs	Total On Hand
CN		1			1
CP	111	1	110	1	223

**Change in Last 24 Hours**

	< 24 Hrs	24-48 Hrs	48 - 72 Hrs	> 72 Hrs
CN	-42	1		
CP	110	-109	90	1

**Loaded Cars on Hand Thunder Bay Waiting for Placement - Last 30 Days All Railways**



## Measurement Definitions

Loads on Wheels	<p>Count of loaded rail cars including all rail cars that have been released loaded at origin and have not been reported by the railway as unloaded at destination.</p> <p>Counts include all rail cars (hopper cars and boxcars) moving within a pipeline.</p>
Loads Not Moving	<p>Loaded rail cars for which the railways have not reported a movement event for 48 hours or more whether the rail car is at origin, enroute or at destination.</p>
Port Unloads	<p>Count of rail cars reported by railways as unloaded at the western port destinations of Vancouver, Prince Rupert and Thunder Bay.</p> <p>Unload counts include all rail cars (hopper cars and boxcars) unloaded by all receivers including major port terminals, transloaders and other receivers.</p>
Cars Arrived	<p>Count of rail cars reported as arrived at the destination railway terminal.</p>
Cars Received in Interchange	<p>Count of rail cars received in interchange by each railway within a destination railway terminal. Interchange activity is tracked for the Vancouver and Thunder Bay pipelines as applicable.</p>
Cars Delivered in Interchange	<p>Count of rail cars delivered in interchange by each railway within a destination railway terminal. Interchange activity is tracked for the Vancouver and Thunder Bay pipelines as applicable.</p>
Cars Placed for Unloading	<p>Count of rail cars reported by the railways as placed loaded at the receiver's facility for unloading.</p>
Loads on Wheels at Destination	<p>Count of rail cars that remain under load within the destination railway terminal including rail cars that have been reported as placed for unloading but not yet reported as unloaded.</p>
Waiting Placement for Unloading	<p>Count of rail cars that have been reported as arrived at the destination railway terminal but not reported as placed for unloading by the railway.</p> <p>For the Ports of Vancouver, Prince Rupert and Thunder Bay the count of rail cars waiting placement for unloading is categorized by age – i.e. the elapsed time from arrival at destination to the current report date.</p>