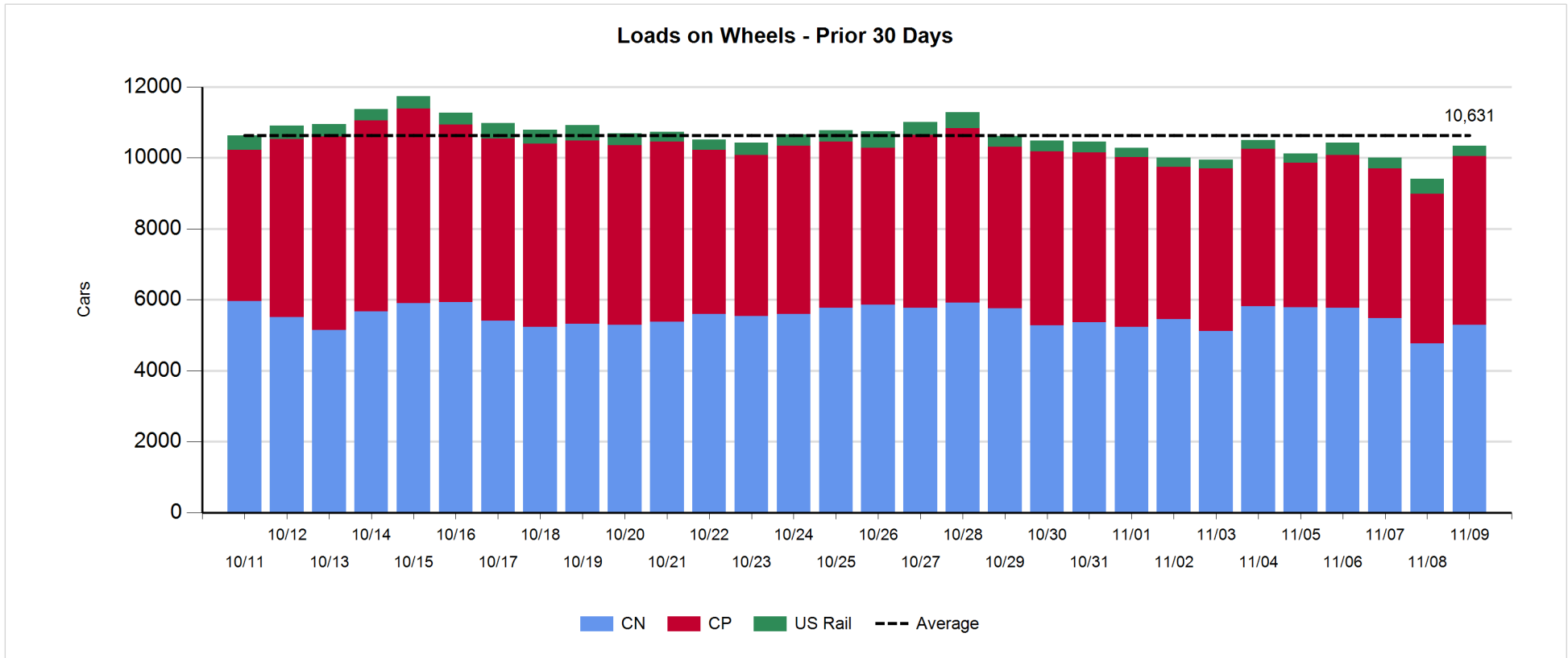


Daily Loads on Wheels - 11/9/2017

	E Canada	Prince Rupert	Thunder Bay	USA/MEX	Vancouver	Total
CN	342	1,586	447	252	2,660	5,287
CP	116		833	532	3,280	4,761
Short Line	17				17	34
US Rail				259		259
	475	1,586	1,280	1,043	5,957	10,341

Change in Loads on Wheels - Prior 24 Hours

	E Canada	Prince Rupert	Thunder Bay	USA/MEX	Vancouver	Total
CN	140	209	-83	19	230	515
CP	18		42	28	457	545
Short Line	-2				-16	-18
US Rail				-110		-110
	156	209	-41	-63	671	932



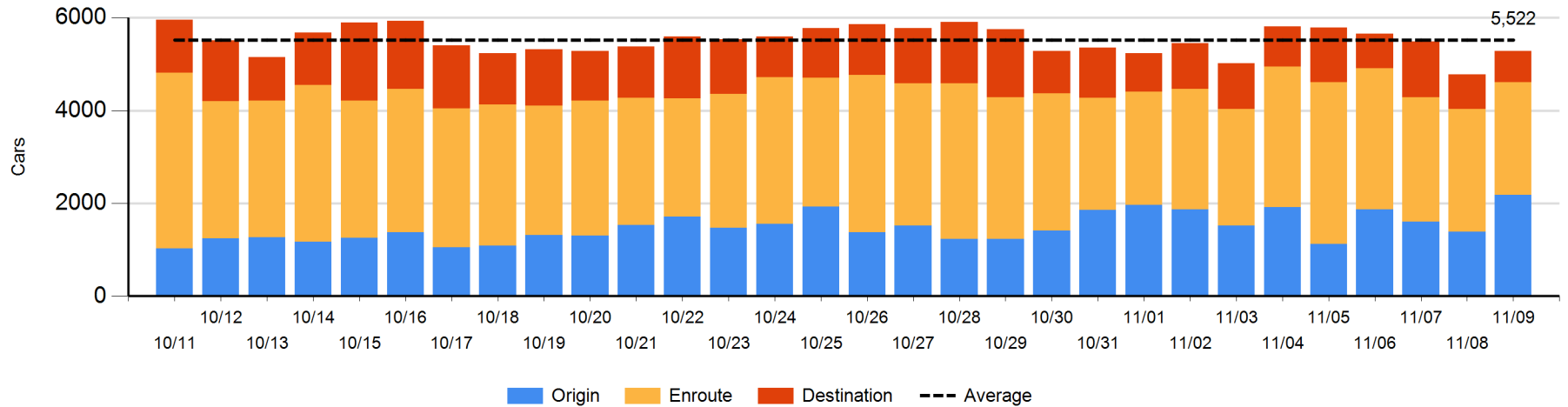
Daily Loads on Wheels By Pipeline Location - 11/9/2017

	E Canada	Prince Rupert	Thunder Bay	USA/MEX	Vancouver	Total
CN						
Origin	173	871	258	54	828	2,184
Enroute	162	481	112	192	1,477	2,424
Destination	7	234	77	6	355	679
	342	1,586	447	252	2,660	5,287
CP						
Origin	22		321	211	1,588	2,142
Enroute	92		124	321	1,083	1,620
Destination	2		388		608	998
	116		833	532	3,279	4,760
US Rail / Short Line						
Origin						
Enroute	2			186		188
Destination	15			73	17	105
	17			259	17	293

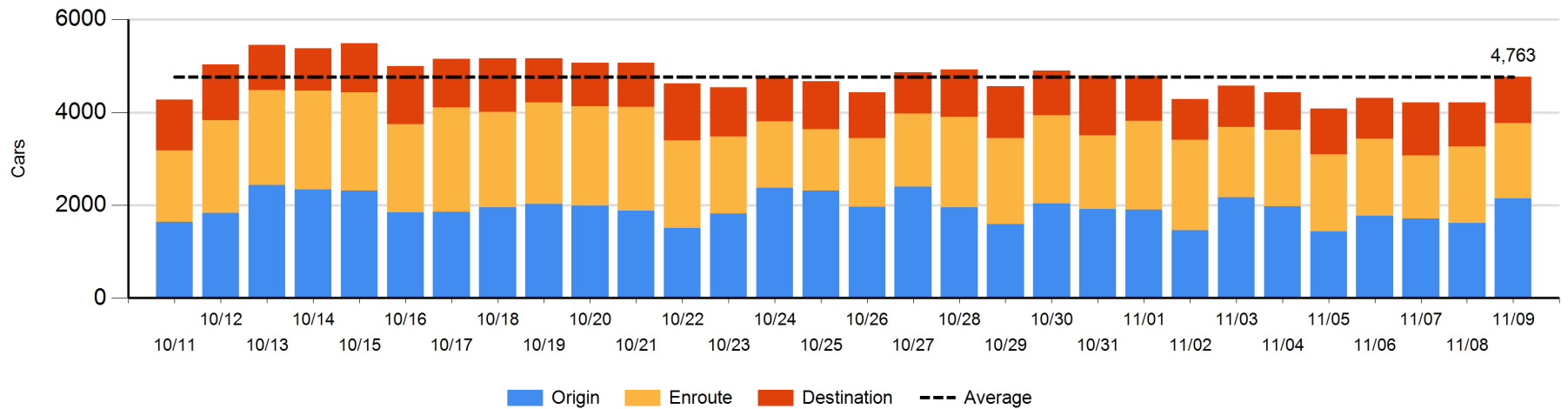
Change in Daily Loads on Wheels By Pipeline Location - Prior 24 Hours

	E Canada	Prince Rupert	Thunder Bay	USA/MEX	Vancouver	Total
CN						
Origin	164	307	101	2	220	794
Enroute	-13	-292	-3	16	71	-221
Destination	-11	194	-181	1	-61	-58
	140	209	-83	19	230	515
CP						
Origin	-8		116	25	395	528
Enroute	26		-218	3	155	-34
Destination	0		144		-93	51
	18		42	28	457	545
US Rail / Short Line						
Origin						
Enroute	2			-13		-11
Destination	-4			-97	-16	-117
	-2			-110	-16	-128

CN Loads on Wheels by Pipeline Location - 11/9/2017



CP Loads on Wheels by Pipeline Location - 11/9/2017

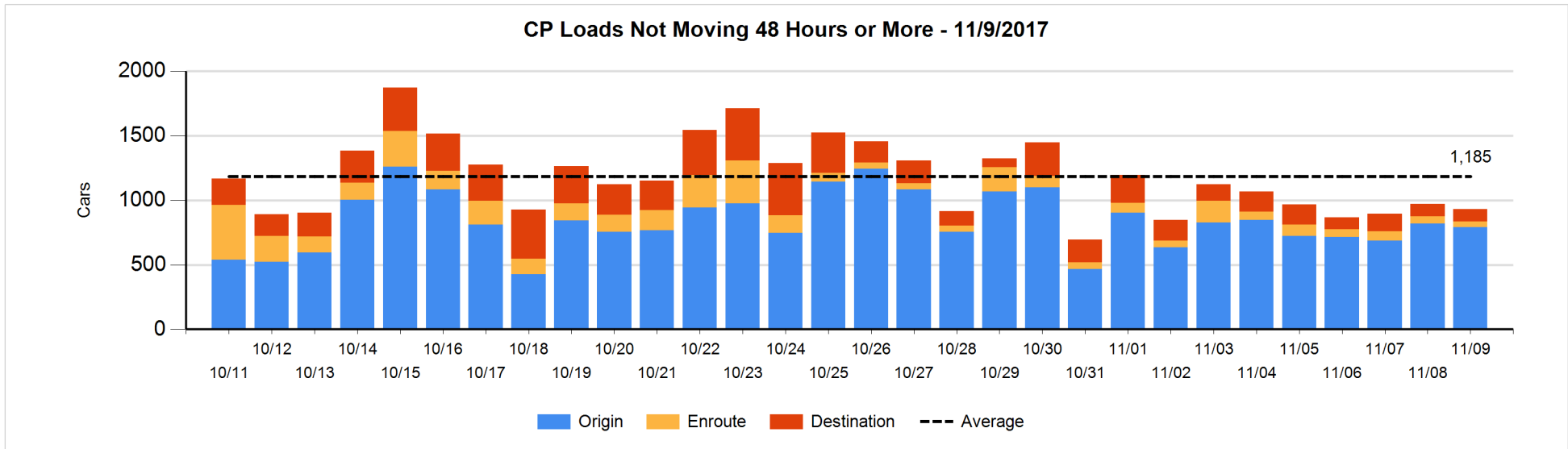
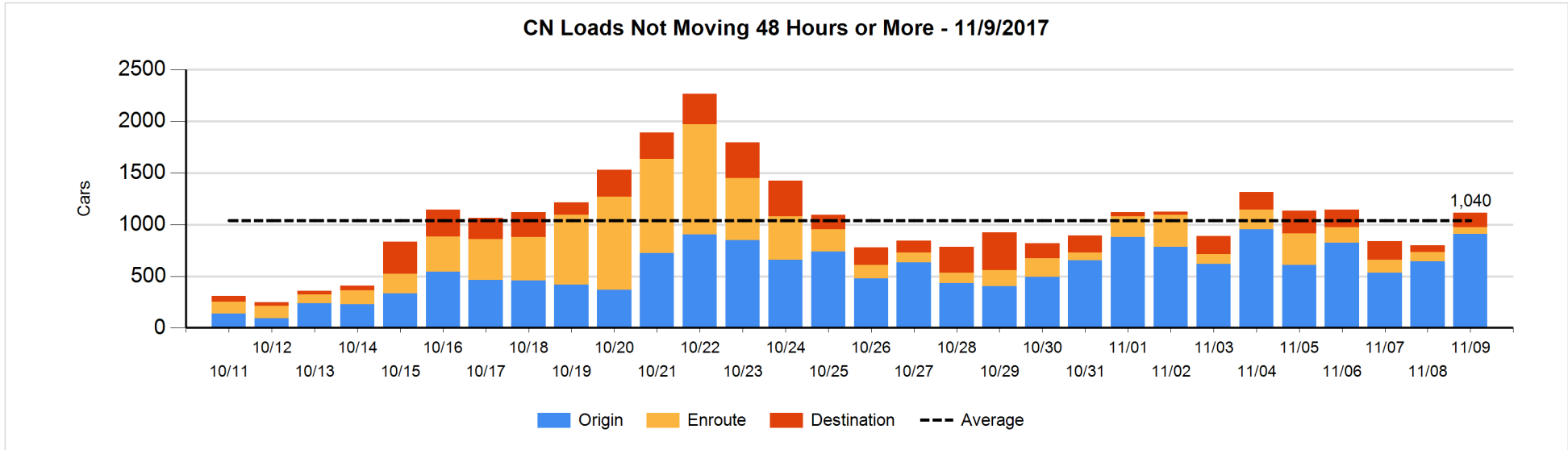


Loads Not Moving 48 Hours or More - 11/9/2017

	E Canada	Prince Rupert	Thunder Bay	USA/MEX	Vancouver	Total
CN						
Origin		459	54	35	360	908
Enroute	17	10		9	29	65
Destination	3	13	38	5	83	142
	20	482	92	49	472	1115
CP						
Origin	4		3	107	677	791
Enroute	1		5	5	35	46
Destination	1		62		33	96
	6		70	112	745	933
US Rail / Short Line						
Origin						
Enroute				98		98
Destination				41	3	44
				139	3	142

Change in Loads Not Moving 48 Hours or More - 11/9/2017

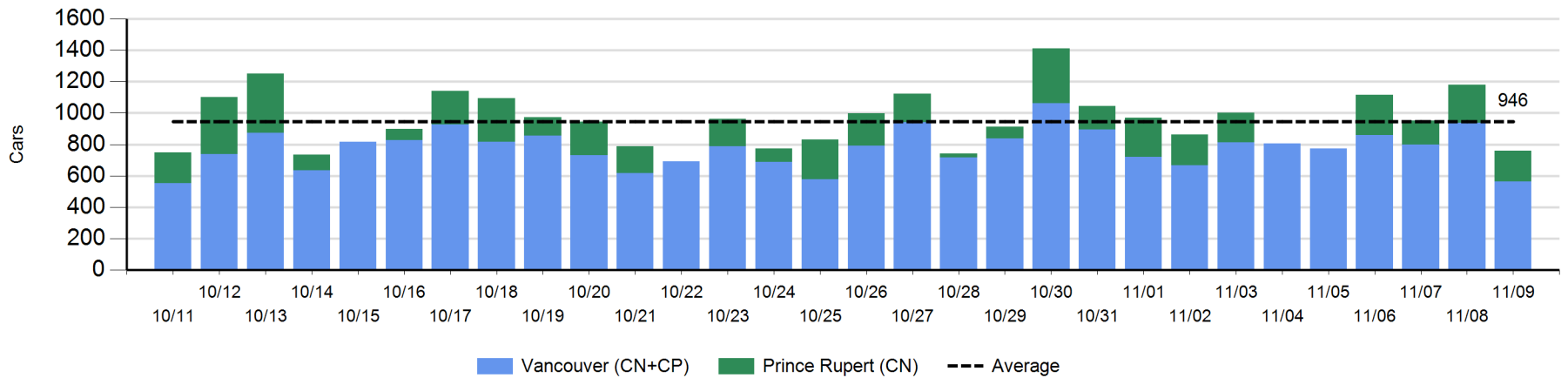
	E Canada	Prince Rupert	Thunder Bay	USA/MEX	Vancouver	Total
CN						
Origin	-6	99	53	28	89	263
Enroute	2	-1		-25	-1	-25
Destination	-1	0	37	0	43	79
	-5	98	90	3	131	317
CP						
Origin	-1		3	54	-85	-29
Enroute	0		1	3	-13	-9
Destination	0		-33		32	-1
	-1		-29	57	-66	-39
US Rail / Short Line						
Origin						
Enroute				0		0
Destination				-2	2	0
				-2	2	0



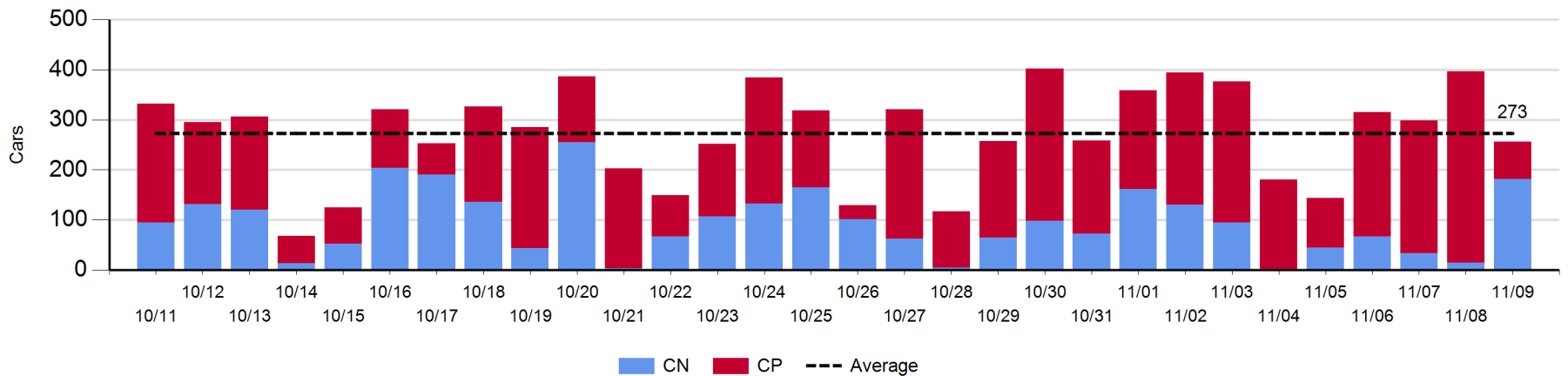
Port Unloads - 11/9/2017

	Prince Rupert	Vancouver	West Coast Total	Thunder Bay	Total
CN	196	175	371	182	553
CP		387	387	74	461
	196	562	758	256	1,014

West Coast Port Unloads - Prior 30 Days



Thunder Bay Port Unloads - Prior 30 Days



Port Terminal Status

Vancouver

Daily Activity for 11/9/2017

	Cars Arrived	Cars Received in Interchange	Cars Delivered in Interchange	Cars Placed for Unloading	Loads on Wheels at Destination As of 11/9/2017
CN	170	111	168	266	355
CP	238	168	111	366	608
SRY				16	17

Port Unloads

	11/09	11/08	Week To Date	Last Week
CN	175	543	1,662	3,040
CP	387	394	1,496	2,691
SRY	16	15	50	52

Age Profile of Loaded Cars Waiting Placement for Unloading

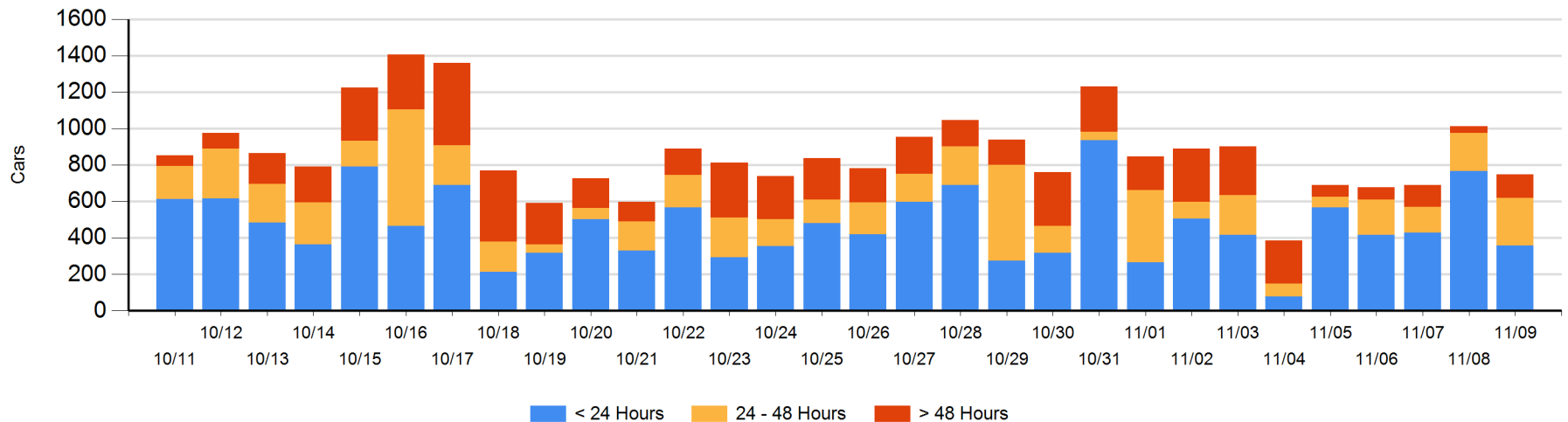
Today

	< 24 Hrs	24 - 48 Hrs	> 48-72 Hrs	> 72 Hrs	Total On Hand
CN	170	157	50	6	383
CP	189	103	62	11	365
SRY					0

Change in Last 24 Hours

	< 24 Hrs	24-48 Hrs	48 - 72 Hrs	> 72 Hrs
CN	-264	58	45	-4
CP	-145	-7	53	-2
SRY				

Loaded Cars on Hand Vancouver Waiting for Placement - Last 30 Days All Railways



Port Terminal Status

Prince Rupert

Daily Activity for 11/9/2017

	Cars Arrived	Cars Received in Interchange	Cars Delivered in Interchange	Cars Placed for Unloading	Loads on Wheels at Destination As of 11/9/2017
CN		380		380	234

Port Unloads

	11/09	11/08	Week To Date	Last Week
CN	196	244	848	1,134

Age Profile of Loaded Cars Waiting Placement for Unloading

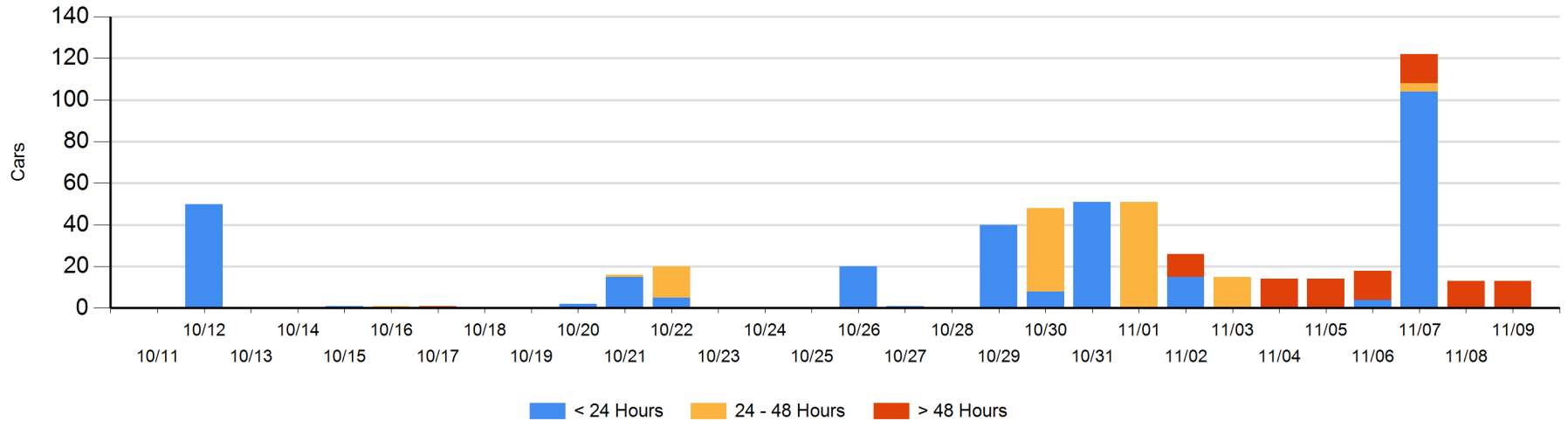
Today

	< 24 Hrs	24 - 48 Hrs	> 48-72 Hrs	> 72 Hrs	Total On Hand
CN				13	13

Change in Last 24 Hours

	< 24 Hrs	24-48 Hrs	48 - 72 Hrs	> 72 Hrs
CN				0

Loaded Cars on Hand Prince Rupert Waiting for Placement - Last 30 Days All Railways



Port Terminal Status

Thunder Bay

Daily Activity for 11/9/2017

	Cars Arrived	Cars Received in Interchange	Cars Delivered in Interchange	Cars Placed for Unloading	Loads on Wheels at Destination As of 11/9/2017
CN	3			159	77
CP	218			211	388

Port Unloads

	11/09	11/08	Week To Date	Last Week
CN	182	15	298	602
CP	74	381	968	1,512

Age Profile of Loaded Cars Waiting Placement for Unloading

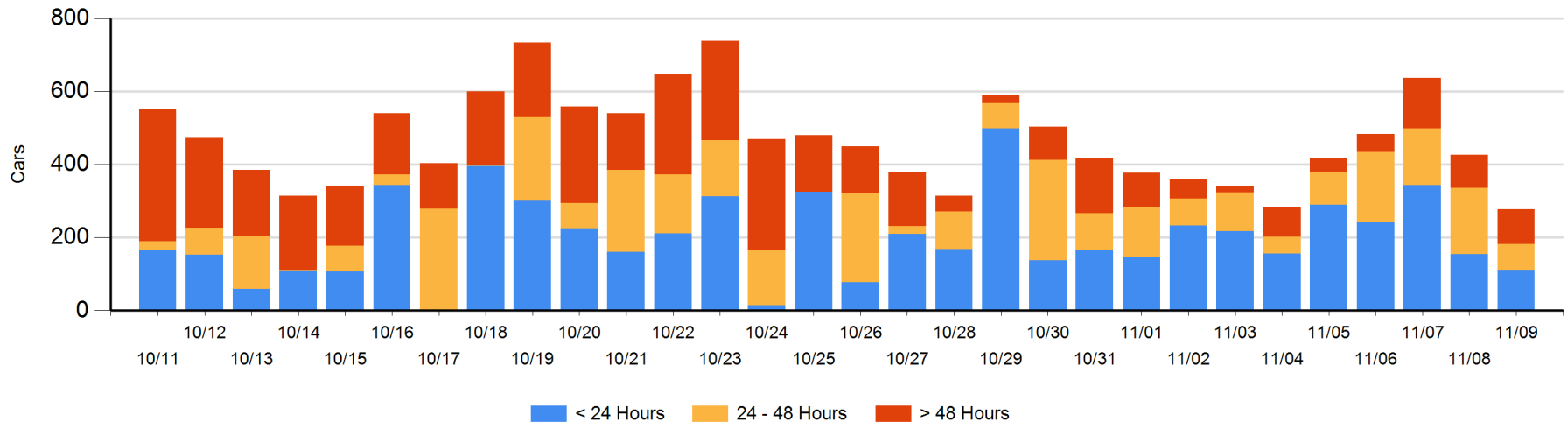
Today

	< 24 Hrs	24 - 48 Hrs	> 48-72 Hrs	> 72 Hrs	Total On Hand
CN	3	15	41		59
CP	109	55	29	26	219

Change in Last 24 Hours

	< 24 Hrs	24-48 Hrs	48 - 72 Hrs	> 72 Hrs
CN	-97	-100	41	
CP	54	-11	-50	14

Loaded Cars on Hand Thunder Bay Waiting for Placement - Last 30 Days All Railways



Measurement Definitions

Loads on Wheels	Count of loaded rail cars including all rail cars that have been released loaded at origin and have not been reported by the railway as unloaded at destination. Counts include all rail cars (hopper cars and boxcars) moving within a pipeline.
Loads Not Moving	Loaded rail cars for which the railways have not reported a movement event for 48 hours or more whether the rail car is at origin, enroute or at destination.
Port Unloads	Count of rail cars reported by railways as unloaded at the western port destinations of Vancouver, Prince Rupert and Thunder Bay. Unload counts include all rail cars (hopper cars and boxcars) unloaded by all receivers including major port terminals, transloaders and other receivers.
Cars Arrived	Count of rail cars reported as arrived at the destination railway terminal.
Cars Received in Interchange	Count of rail cars received in interchange by each railway within a destination railway terminal. Interchange activity is tracked for the Vancouver and Thunder Bay pipelines as applicable.
Cars Delivered in Interchange	Count of rail cars delivered in interchange by each railway within a destination railway terminal. Interchange activity is tracked for the Vancouver and Thunder Bay pipelines as applicable.
Cars Placed for Unloading	Count of rail cars reported by the railways as placed loaded at the receiver's facility for unloading.
Loads on Wheels at Destination	Count of rail cars that remain under load within the destination railway terminal including rail cars that have been reported as placed for unloading but not yet reported as unloaded.
Waiting Placement for Unloading	Count of rail cars that have been reported as arrived at the destination railway terminal but not reported as placed for unloading by the railway. For the Ports of Vancouver, Prince Rupert and Thunder Bay the count of rail cars waiting placement for unloading is categorized by age – i.e. the elapsed time from arrival at destination to the current report date.