

## Loads on Wheels

- System wide loads on wheels declined for the second consecutive day - loads now at 10,460 - in line with the trailing 30 day average
- In total loads on wheels declined by 498 cars reflecting a decrease of 42 cars on CN coupled with a decline of 369 cars on CP - counts also declined for traffic moving on US carriers
- CN loads on wheels declined marginally in three of five corridors with small increases seen in the Prince Rupert and USA corridors. System wide CN loads on wheels remain above 5,100 - 6% lower than the trailing 30 day average.
- CP volumes decreased in the Vancouver (-155), Thunder Bay (-126) and USA (-88) corridors. System wide loads on wheels are now at 5,043 - 5% above the trailing 30 day average.
- Vancouver now at 6,150, Prince Rupert at 1,497 and Thunder Bay at 1,425
- CN volumes are below the trailing 30 day average in all three western port corridors - Vancouver (-13%), Thunder Bay (-25%) and Prince Rupert (-2%). Volumes in these corridors continue to be impacted by CN's hopper car rationing policy which has seen it ration nearly 1,900 orders in these corridors in the prior two weeks - Vancouver (1,005), Thunder Bay (468) and Prince Rupert (428).

## Loads Not Moving

- The count of loaded cars not moving on CN and CP for 48 hours or more declined by 455 cars in the prior 24 hours; total cars on CN and CP not moving for 48 hours or more remains above 3,600 cars
- This represents fully one third of total loads on wheels in the system
- CN
  - The count of cars not moving decreased by 286 cars on a net basis - loads on wheels now idle for 48 hours or more at 1,020
  - Counts decreased in all corridors other than the USA corridor which saw a slight increase - the most declines were seen in the Vancouver (-93) and Prince Rupert (-134) corridors.
  - 75% of cars (756) are dwelling at origin locations
- CP
  - CP counts decreased by 169 cars in total - attributable primarily to the Vancouver corridor (-158) - idle cars now at 2,612
  - 75% of cars are dwelling at origin - 1,969 cars - almost all of them destined to Vancouver.

## Port Performance

- CN and CP unloaded a total of 858 cars at the three western ports - approximately 40% lower than average Monday performance during the prior 30 days and 500 fewer cars than Monday last week.
- Vancouver
  - Total of 486 cars reported unloaded by CN and CP at the Port of Vancouver; CN - 257 and CP - 229
  - There are currently less than 200 cars on hand at Vancouver waiting placement for unloading
- Thunder Bay
  - Total of 304 cars reported as unloaded in the prior 24 hours - CN 178 and CP - 126
  - Cars at Thunder Bay waiting placement now at 396 with CP accounting for 63% of cars

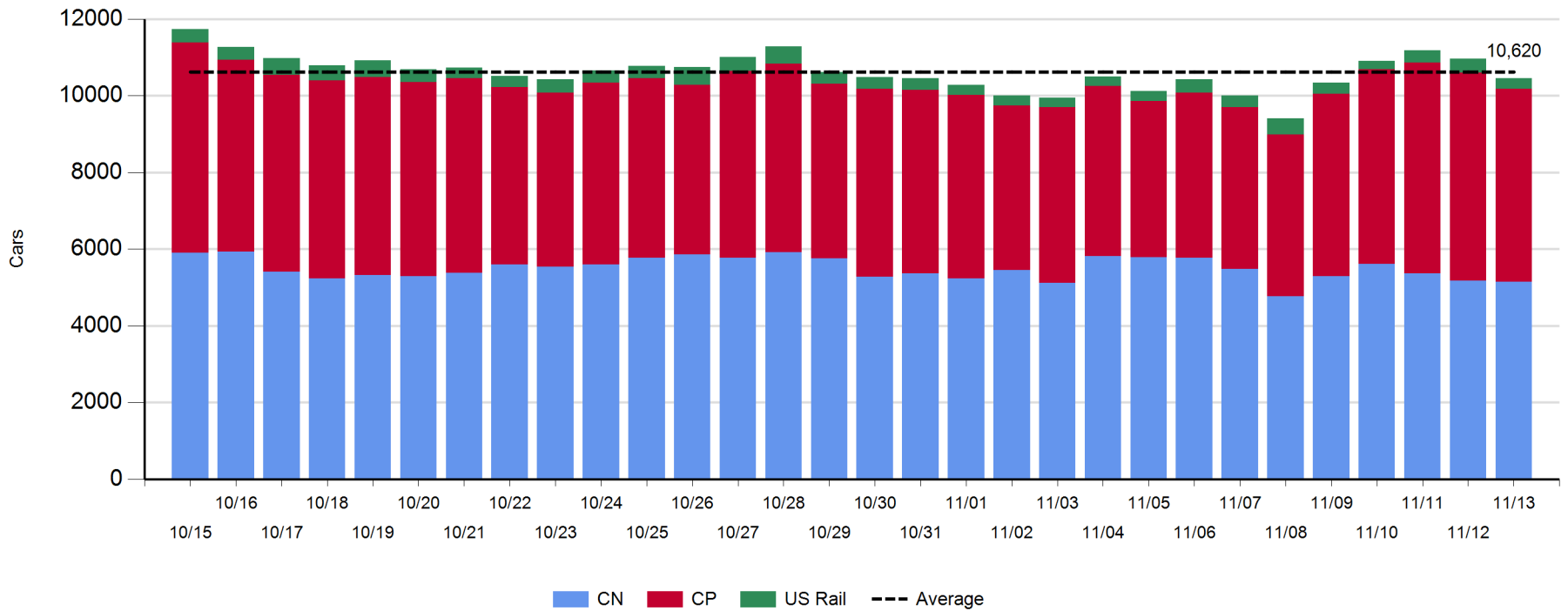
**Daily Loads on Wheels - 11/13/2017**

	E Canada	Prince Rupert	Thunder Bay	USA/MEX	Vancouver	Total
CN	369	1,497	412	410	2,450	5,138
CP	103		1,013	243	3,684	5,043
Short Line	5				16	21
US Rail				258		258
	477	1,497	1,425	911	6,150	10,460

**Change in Loads on Wheels - Prior 24 Hours**

	E Canada	Prince Rupert	Thunder Bay	USA/MEX	Vancouver	Total
CN	-8	36	-57	37	-50	-42
CP	0		-126	-88	-155	-369
Short Line	0				-3	-3
US Rail				-84		-84
	-8	36	-183	-135	-208	-498

**Loads on Wheels - Prior 30 Days**

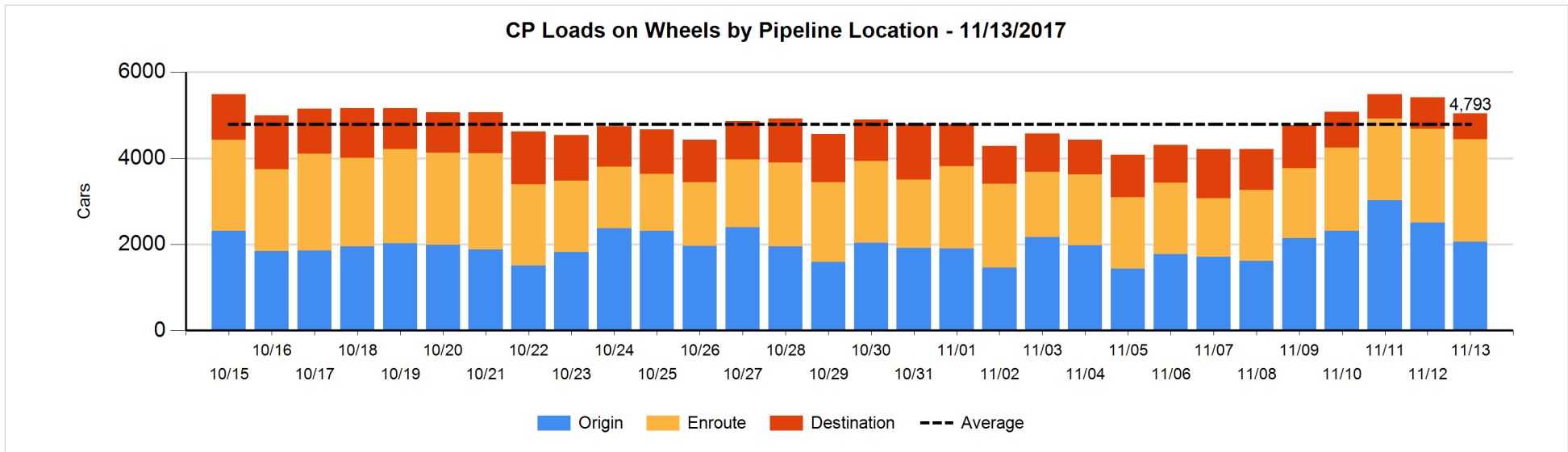
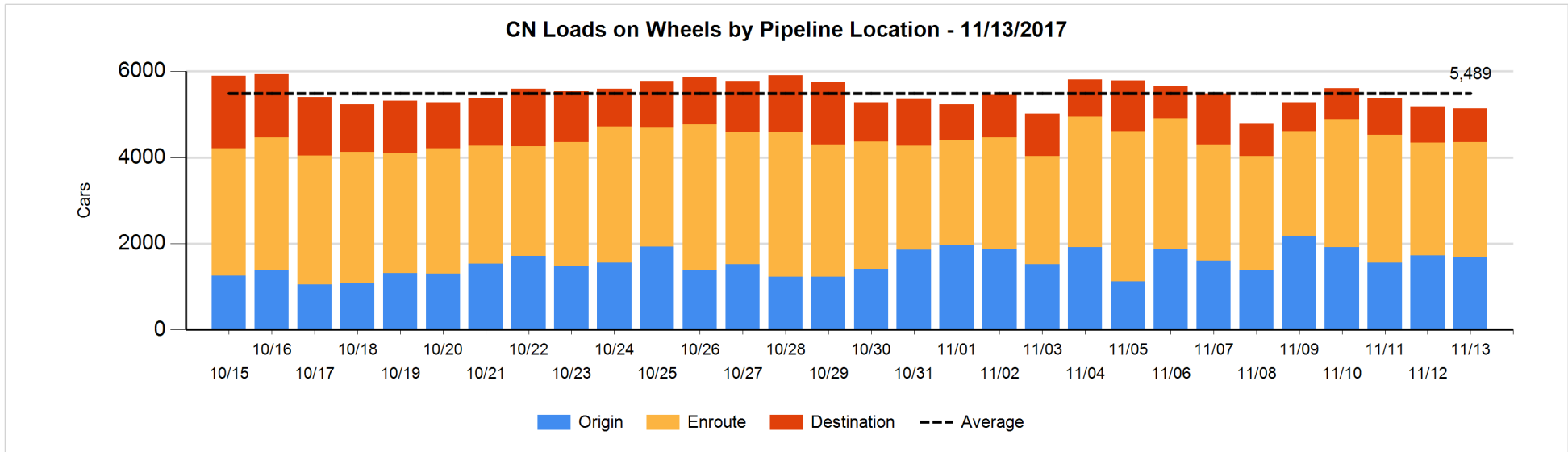


**Daily Loads on Wheels By Pipeline Location - 11/13/2017**

	E Canada	Prince Rupert	Thunder Bay	USA/MEX	Vancouver	Total
CN						
Origin	33	553	75	26	988	1,675
Enroute	277	694	156	355	1,195	2,677
Destination	59	250	181	29	267	786
	369	1,497	412	410	2,450	5,138
CP						
Origin			111	3	1,946	2,060
Enroute	64		576	136	1,599	2,375
Destination	39		326	104	138	607
	103		1,013	243	3,683	5,042
US Rail / Short Line						
Origin						
Enroute	1			172		173
Destination	4			86	16	106
	5			258	16	279

**Change in Daily Loads on Wheels By Pipeline Location - Prior 24 Hours**

	E Canada	Prince Rupert	Thunder Bay	USA/MEX	Vancouver	Total
CN						
Origin	-15	-37	-26	17	10	-51
Enroute	-27	-105	147	4	34	53
Destination	34	178	-178	16	-94	-44
	-8	36	-57	37	-50	-42
CP						
Origin			-227	0	-215	-442
Enroute	-38		116	-183	297	192
Destination	38		-15	95	-237	-119
	0		-126	-88	-155	-369
US Rail / Short Line						
Origin						
Enroute	-2			29		27
Destination	2			-113	-3	-114
	0			-84	-3	-87

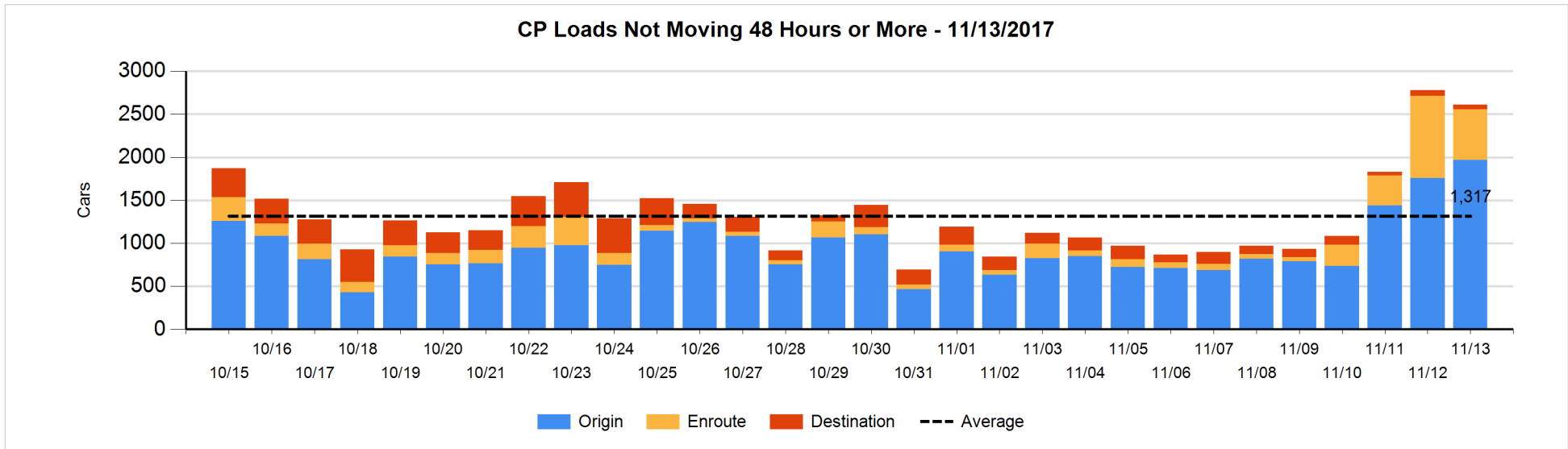
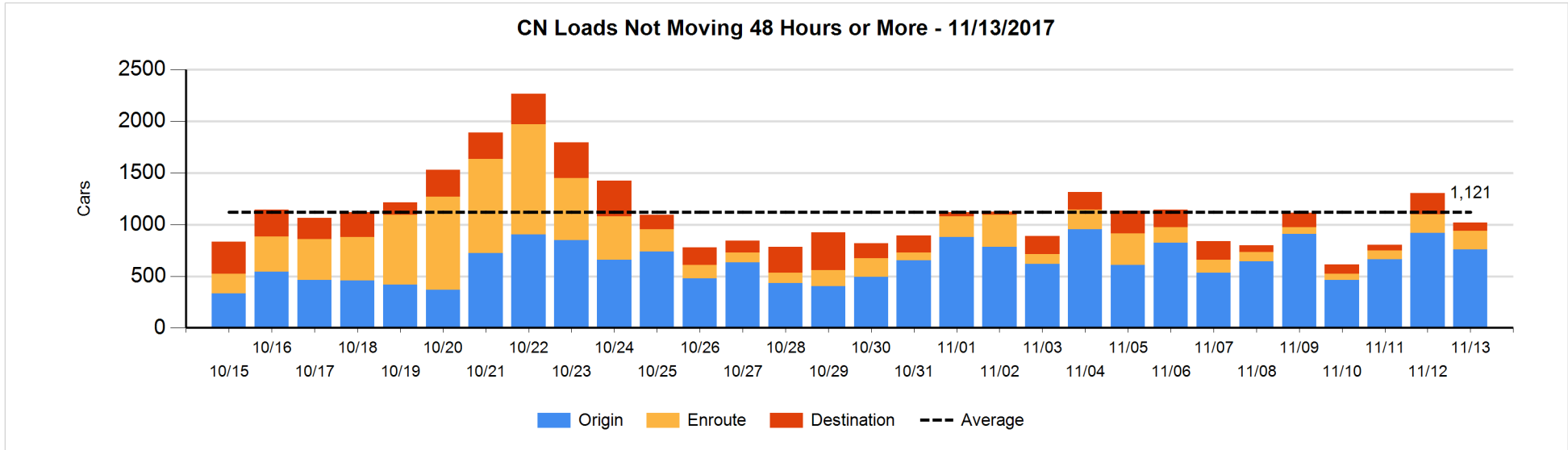


**Loads Not Moving 48 Hours or More - 11/13/2017**

	E Canada	Prince Rupert	Thunder Bay	USA/MEX	Vancouver	Total
<b>CN</b>						
Origin	33	342		7	374	756
Enroute	14	16		35	116	181
Destination	13	4	11	5	50	83
	60	362	11	47	540	1020
<b>CP</b>						
Origin			111	3	1855	1969
Enroute	23		3	23	538	587
Destination	1		46		9	56
	24		160	26	2402	2612
<b>US Rail / Short Line</b>						
Origin						
Enroute				78		78
Destination	2			50	8	60
	2			128	8	138

**Change in Loads Not Moving 48 Hours or More - 11/13/2017**

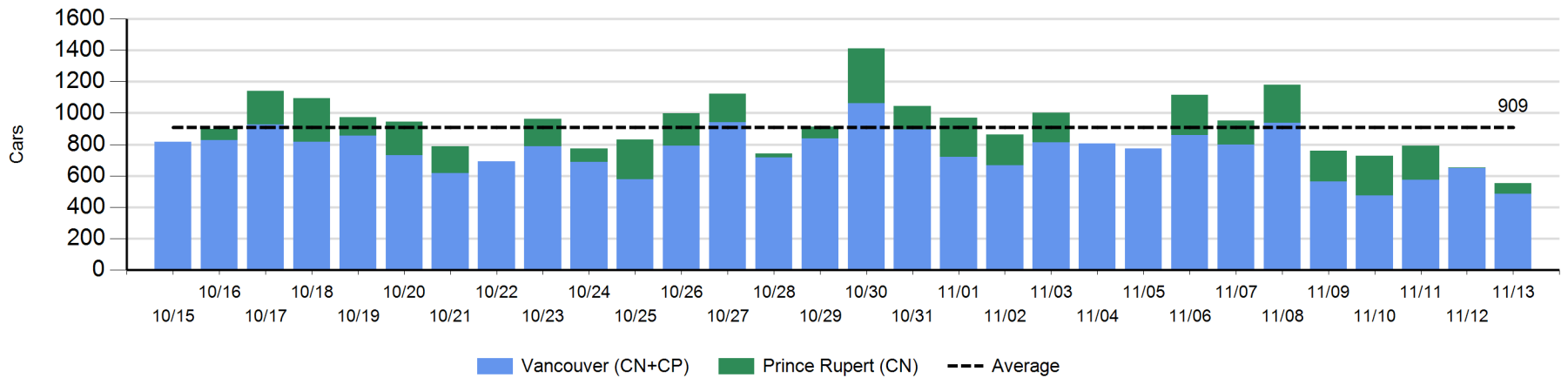
	E Canada	Prince Rupert	Thunder Bay	USA/MEX	Vancouver	Total
<b>CN</b>						
Origin	-15	-138		1	-11	-163
Enroute	-2	4		23	-24	1
Destination	6	0	-72	0	-58	-124
	-11	-134	-72	24	-93	-286
<b>CP</b>						
Origin			-5	0	216	211
Enroute	20		0	-38	-353	-371
Destination	0		21	-9	-21	-9
	20		16	-47	-158	-169
<b>US Rail / Short Line</b>						
Origin						
Enroute	-2			18		16
Destination	0			-3	-2	-5
	-2			15	-2	11



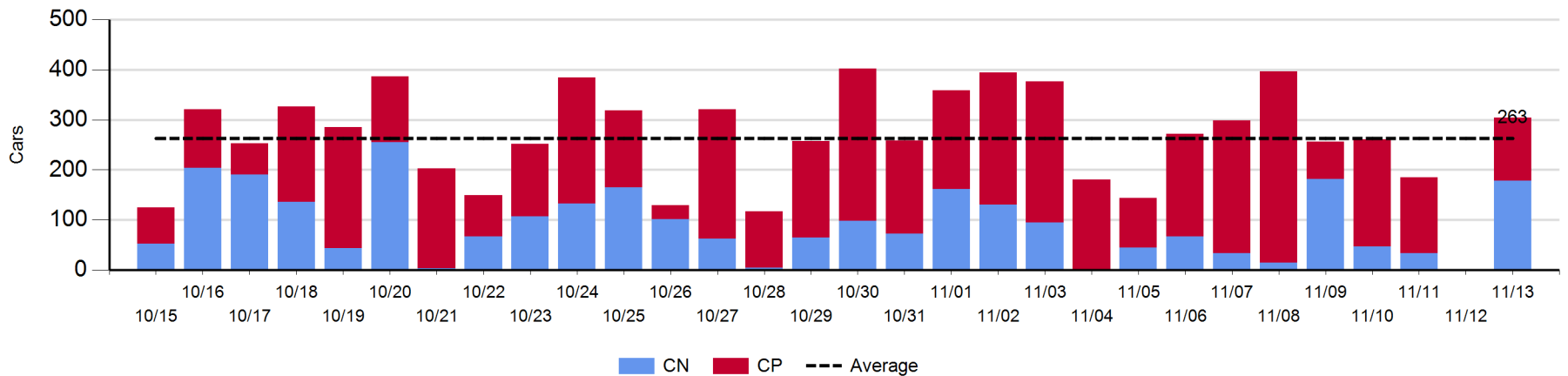
**Port Unloads - 11/13/2017**

	Prince Rupert	Vancouver	West Coast Total	Thunder Bay	Total
CN	68	257	325	178	503
CP		229	229	126	355
	68	486	554	304	858

**West Coast Port Unloads - Prior 30 Days**



**Thunder Bay Port Unloads - Prior 30 Days**



**Port Terminal Status**

**Vancouver**

Daily Activity for 11/13/2017

	Cars Arrived	Cars Received in Interchange	Cars Delivered in Interchange	Cars Placed for Unloading	Loads on Wheels at Destination As of 11/13/2017
CN	155	9	1	290	267
CP		1	9	105	138
SRY	1			11	16

**Port Unloads**

	11/13	11/12	Week To Date	Last Week
CN	257	274	257	2,368
CP	229	377	229	2,491
SRY	4		4	55

**Age Profile of Loaded Cars Waiting Placement for Unloading**

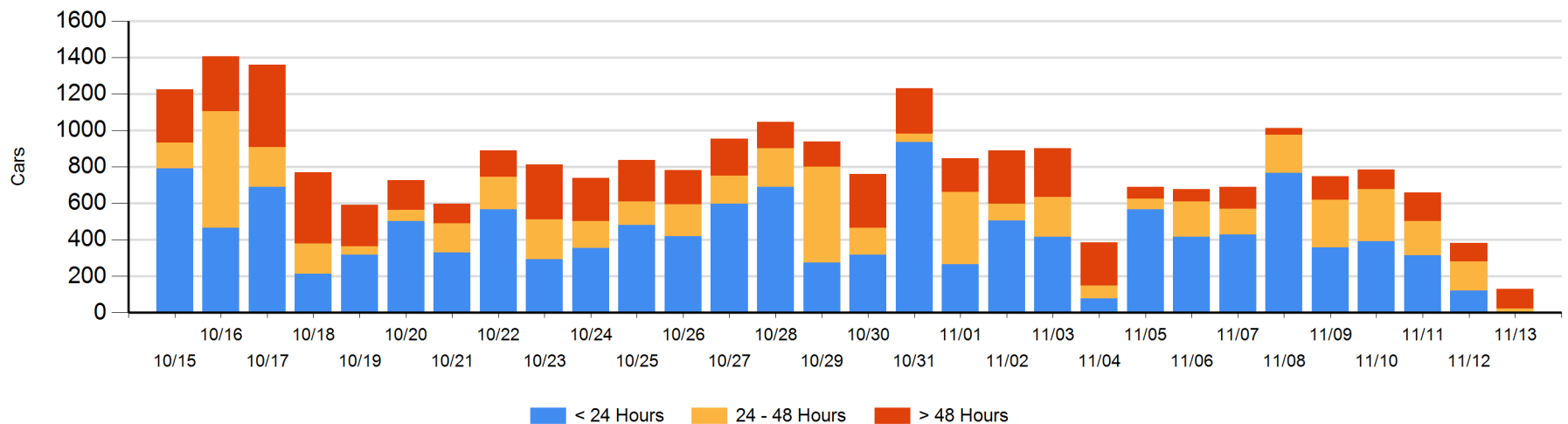
**Today**

	< 24 Hrs	24 - 48 Hrs	> 48-72 Hrs	> 72 Hrs	Total On Hand
CN		23	65	3	91
CP				41	41
SRY					0

**Change in Last 24 Hours**

	< 24 Hrs	24-48 Hrs	48 - 72 Hrs	> 72 Hrs
CN	-29	-136	60	-23
CP	-93		-38	9
SRY				

**Loaded Cars on Hand Vancouver Waiting for Placement - Last 30 Days All Railways**





**Port Terminal Status**

**Prince Rupert**

Daily Activity for 11/13/2017

	Cars Arrived	Cars Received in Interchange	Cars Delivered in Interchange	Cars Placed for Unloading	Loads on Wheels at Destination As of 11/13/2017
CN	246			246	250

**Port Unloads**

	11/13	11/12	Week To Date	Last Week
CN	68	1	68	1,319

**Age Profile of Loaded Cars Waiting Placement for Unloading**

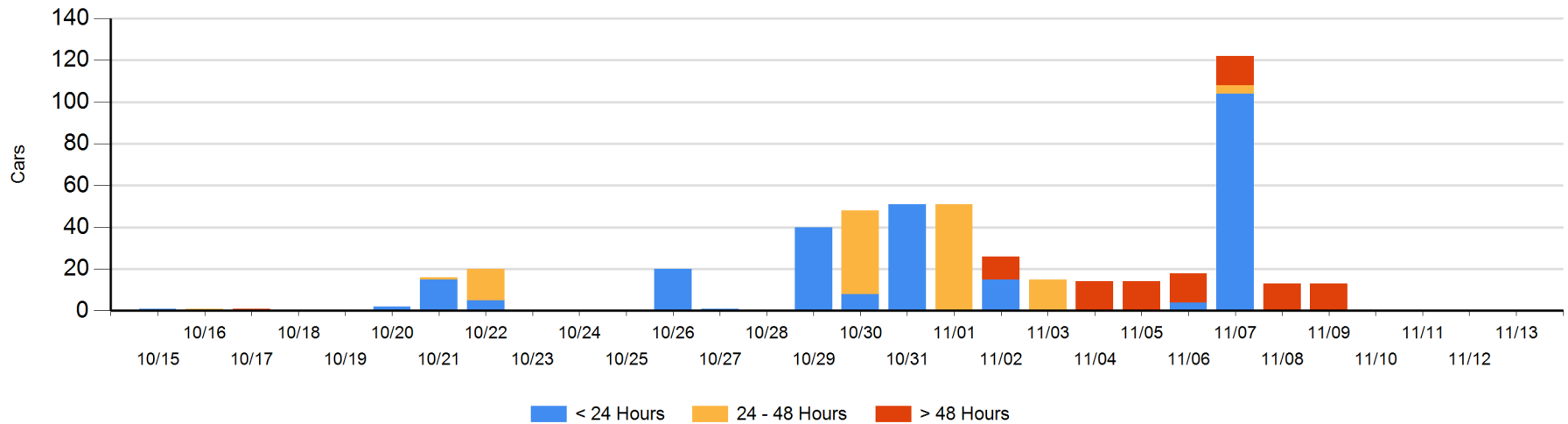
**Today**

	< 24 Hrs	24 - 48 Hrs	> 48-72 Hrs	> 72 Hrs	Total On Hand
CN					0

**Change in Last 24 Hours**

	< 24 Hrs	24-48 Hrs	48 - 72 Hrs	> 72 Hrs
CN				

Loaded Cars on Hand Prince Rupert Waiting for Placement - Last 30 Days All Railways



**Port Terminal Status**

**Thunder Bay**

Daily Activity for 11/13/2017

	Cars Arrived	Cars Received in Interchange	Cars Delivered in Interchange	Cars Placed for Unloading	Loads on Wheels at Destination As of 11/13/2017
CN				15	181
CP	128			167	326

**Port Unloads**

	11/13	11/12	Week To Date	Last Week
CN	178		178	378
CP	126		126	1,291

**Age Profile of Loaded Cars Waiting Placement for Unloading**

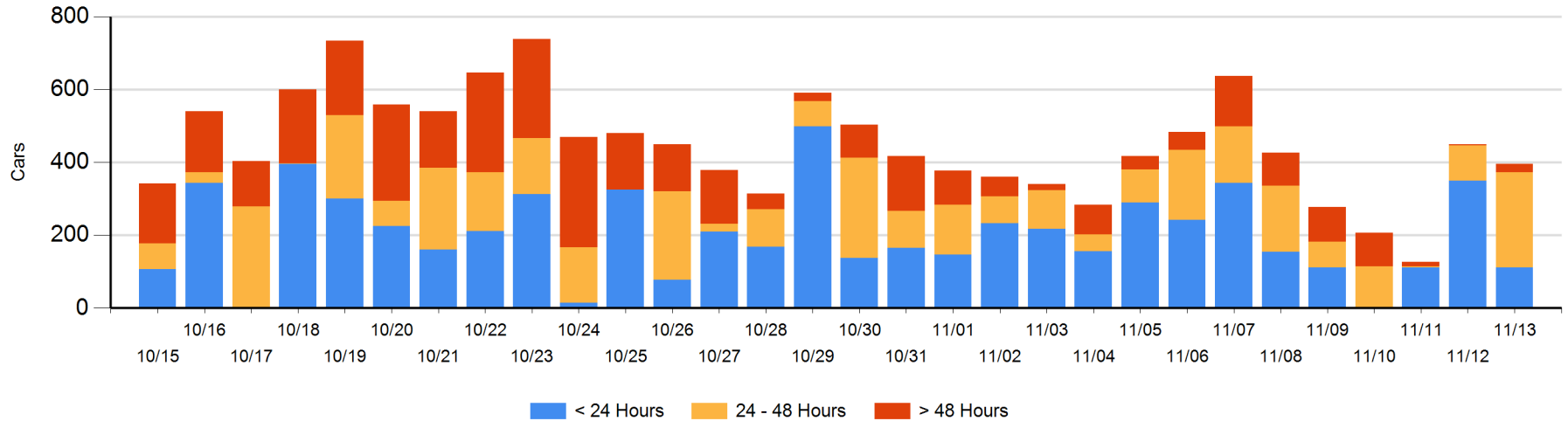
**Today**

	< 24 Hrs	24 - 48 Hrs	> 48-72 Hrs	> 72 Hrs	Total On Hand
CN		148			148
CP	111	113	20	4	248

**Change in Last 24 Hours**

	< 24 Hrs	24-48 Hrs	48 - 72 Hrs	> 72 Hrs
CN	-148	133		
CP	-90	31	18	2

**Loaded Cars on Hand Thunder Bay Waiting for Placement - Last 30 Days All Railways**



## Measurement Definitions

Loads on Wheels	<p>Count of loaded rail cars including all rail cars that have been released loaded at origin and have not been reported by the railway as unloaded at destination.</p> <p>Counts include all rail cars (hopper cars and boxcars) moving within a pipeline.</p>
Loads Not Moving	<p>Loaded rail cars for which the railways have not reported a movement event for 48 hours or more whether the rail car is at origin, enroute or at destination.</p>
Port Unloads	<p>Count of rail cars reported by railways as unloaded at the western port destinations of Vancouver, Prince Rupert and Thunder Bay.</p> <p>Unload counts include all rail cars (hopper cars and boxcars) unloaded by all receivers including major port terminals, transloaders and other receivers.</p>
Cars Arrived	<p>Count of rail cars reported as arrived at the destination railway terminal.</p>
Cars Received in Interchange	<p>Count of rail cars received in interchange by each railway within a destination railway terminal. Interchange activity is tracked for the Vancouver and Thunder Bay pipelines as applicable.</p>
Cars Delivered in Interchange	<p>Count of rail cars delivered in interchange by each railway within a destination railway terminal. Interchange activity is tracked for the Vancouver and Thunder Bay pipelines as applicable.</p>
Cars Placed for Unloading	<p>Count of rail cars reported by the railways as placed loaded at the receiver's facility for unloading.</p>
Loads on Wheels at Destination	<p>Count of rail cars that remain under load within the destination railway terminal including rail cars that have been reported as placed for unloading but not yet reported as unloaded.</p>
Waiting Placement for Unloading	<p>Count of rail cars that have been reported as arrived at the destination railway terminal but not reported as placed for unloading by the railway.</p> <p>For the Ports of Vancouver, Prince Rupert and Thunder Bay the count of rail cars waiting placement for unloading is categorized by age – i.e. the elapsed time from arrival at destination to the current report date.</p>