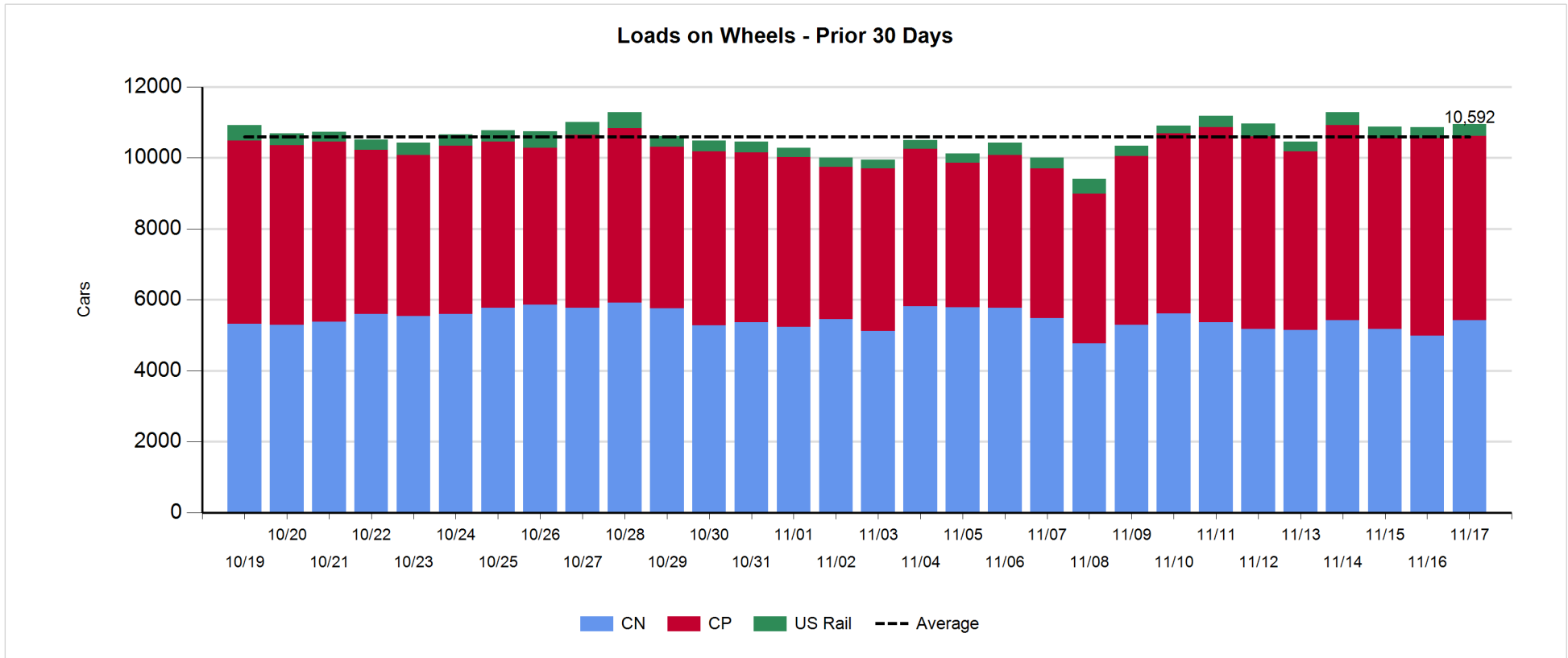


Daily Loads on Wheels - 11/17/2017

	E Canada	Prince Rupert	Thunder Bay	USA/MEX	Vancouver	Total
CN	367	1,187	314	521	3,025	5,414
CP	74		686	95	4,342	5,197
Short Line	6				44	50
US Rail				284		284
	447	1,187	1,000	900	7,411	10,945

Change in Loads on Wheels - Prior 24 Hours

	E Canada	Prince Rupert	Thunder Bay	USA/MEX	Vancouver	Total
CN	38	-83	-13	115	372	429
CP	-4		-15	-142	-210	-371
Short Line	-24				6	-18
US Rail				50		50
	10	-83	-28	23	168	90

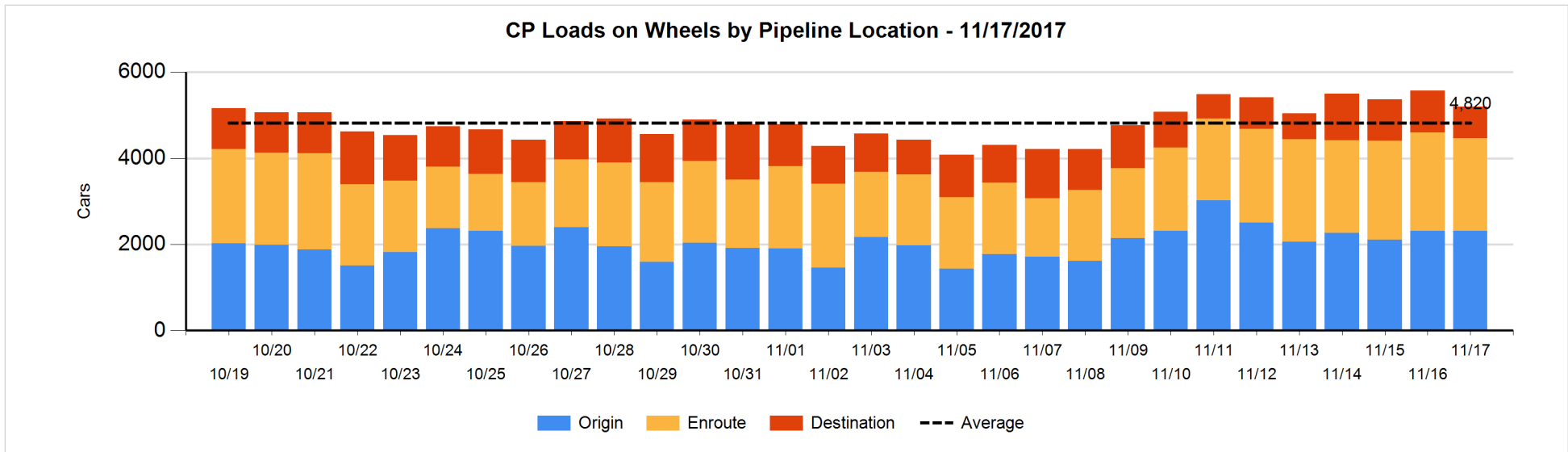
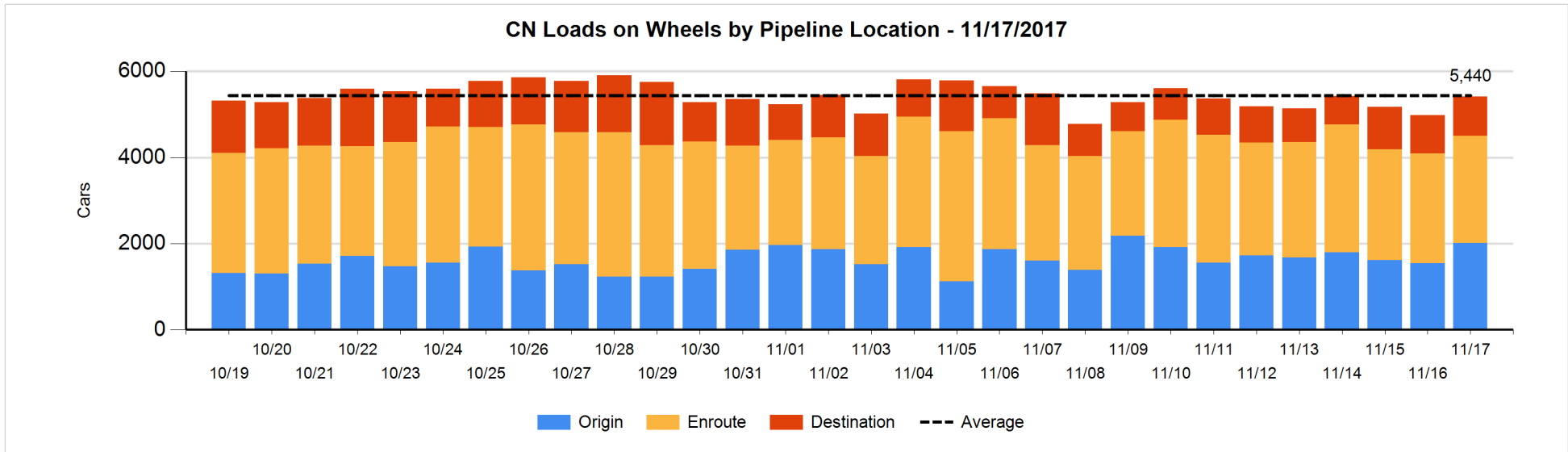


Daily Loads on Wheels By Pipeline Location - 11/17/2017

	E Canada	Prince Rupert	Thunder Bay	USA/MEX	Vancouver	Total
CN						
Origin	126	250	200	96	1,339	2,011
Enroute	151	813	54	320	1,153	2,491
Destination	90	124	60	105	533	912
	367	1,187	314	521	3,025	5,414
CP						
Origin	19		467	29	1,793	2,308
Enroute	35		178	43	1,905	2,161
Destination	20		41	23	643	727
	74		686	95	4,341	5,196
US Rail / Short Line						
Origin						
Enroute	1			220		221
Destination	5			64	44	113
	6			284	44	334

Change in Daily Loads on Wheels By Pipeline Location - Prior 24 Hours

	E Canada	Prince Rupert	Thunder Bay	USA/MEX	Vancouver	Total
CN						
Origin	-14	-7	146	54	284	463
Enroute	54	-69	25	67	-129	-52
Destination	-2	-7	-184	-6	217	18
	38	-83	-13	115	372	429
CP						
Origin	-4		26	-1	-23	-2
Enroute	-7		112	-139	-93	-127
Destination	7		-153	-2	-94	-242
	-4		-15	-142	-210	-371
US Rail / Short Line						
Origin						
Enroute	-16			72		56
Destination	-8			-22	6	-24
	-24			50	6	32

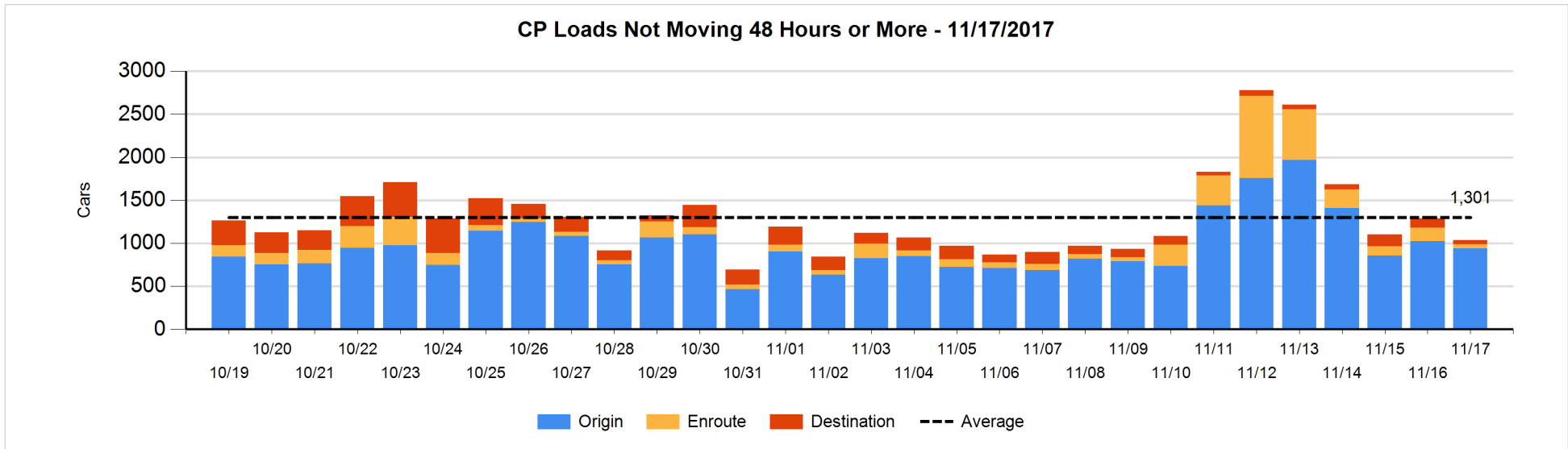
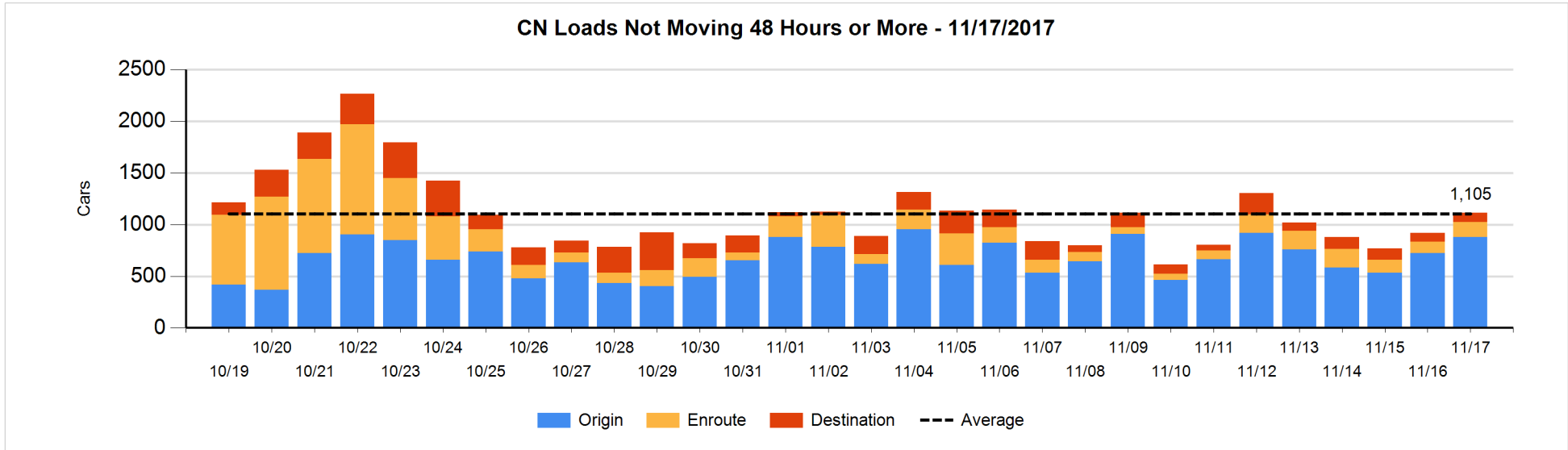


Loads Not Moving 48 Hours or More - 11/17/2017

	E Canada	Prince Rupert	Thunder Bay	USA/MEX	Vancouver	Total
CN						
Origin		94		3	780	877
Enroute	10	5		8	126	149
Destination	59	2	1	10	17	89
	69	101	1	21	923	1115
CP						
Origin	1		108	2	830	941
Enroute	8			6	32	46
Destination	9		36		3	48
	18		144	8	865	1035
US Rail / Short Line						
Origin						
Enroute				22		22
Destination				42	5	47
				64	5	69

Change in Loads Not Moving 48 Hours or More - 11/17/2017

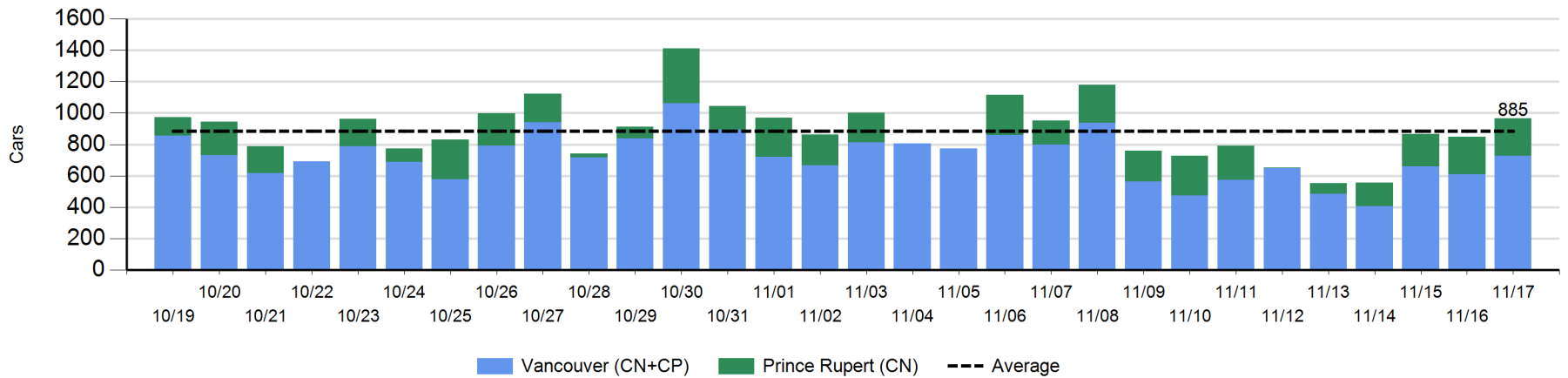
	E Canada	Prince Rupert	Thunder Bay	USA/MEX	Vancouver	Total
CN						
Origin	-27	-108		-18	306	153
Enroute	2	-2		-6	47	41
Destination	21	2	0	-2	-18	3
	-4	-108	0	-26	335	197
CP						
Origin	-4		100	1	-178	-81
Enroute	-8		-66	-12	-28	-114
Destination	4		-66		2	-60
	-8		-32	-11	-204	-255
US Rail / Short Line						
Origin						
Enroute				-15		-15
Destination				-3	1	-2
				-18	1	-17



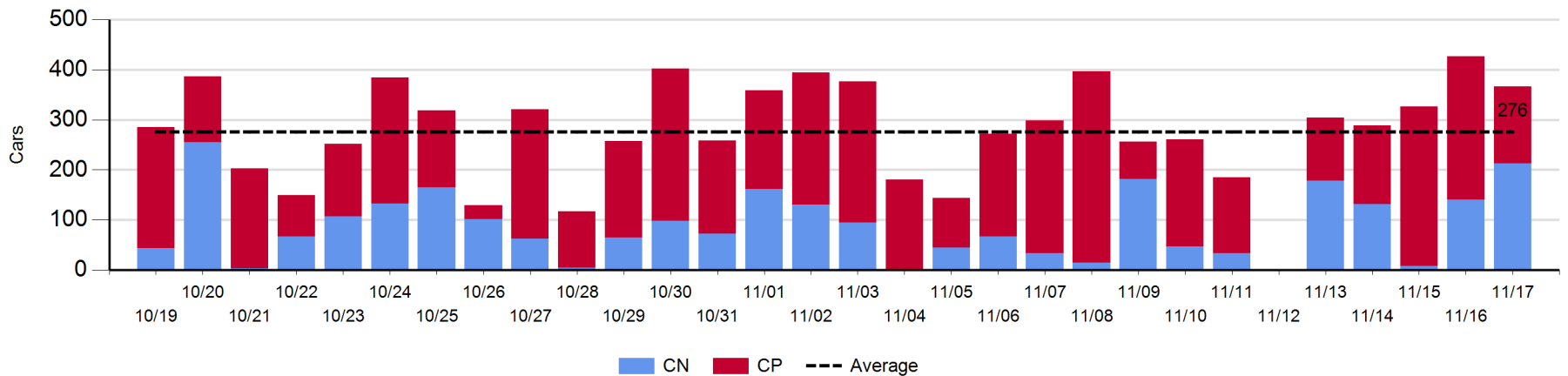
Port Unloads - 11/17/2017

	Prince Rupert	Vancouver	West Coast Total	Thunder Bay	Total
CN	239	330	569	213	782
CP		396	396	153	549
	239	726	965	366	1,331

West Coast Port Unloads - Prior 30 Days



Thunder Bay Port Unloads - Prior 30 Days



Port Terminal Status

Vancouver

Daily Activity for 11/17/2017

	Cars Arrived	Cars Received in Interchange	Cars Delivered in Interchange	Cars Placed for Unloading	Loads on Wheels at Destination As of 11/17/2017
CN	117	494	177	389	533
CP	724	177	501	477	643
SRY		7		1	44

Port Unloads

	11/17	11/16	Week To Date	Last Week
CN	330	202	1,352	2,368
CP	396	406	1,532	2,491
SRY	1	1	17	55

Age Profile of Loaded Cars Waiting Placement for Unloading

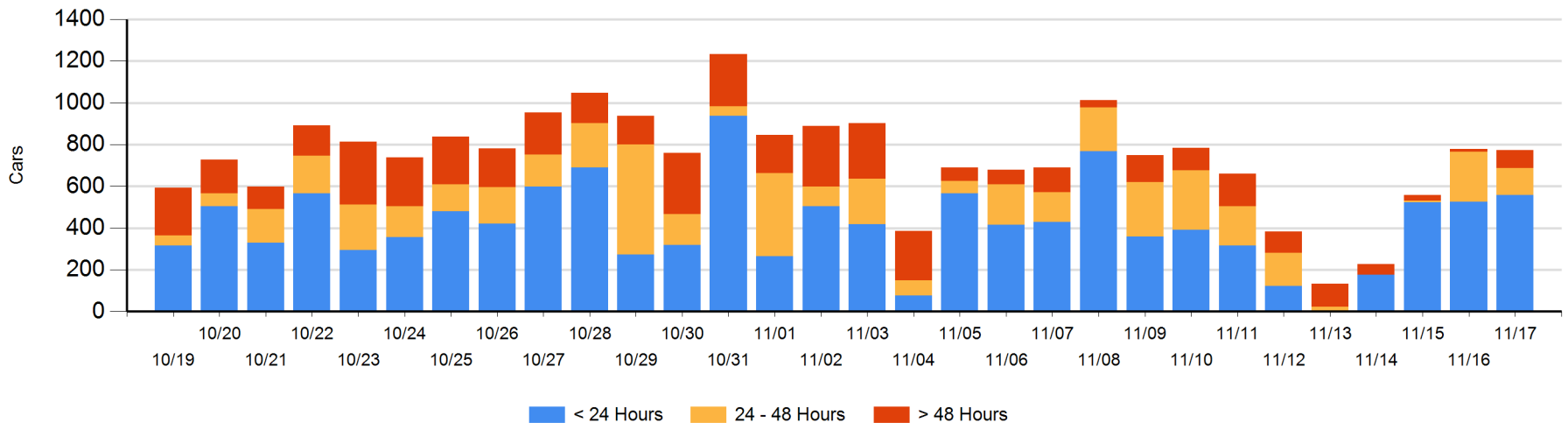
Today

	< 24 Hrs	24 - 48 Hrs	> 48-72 Hrs	> 72 Hrs	Total On Hand
CN	117	68	47	1	233
CP	441	60	29	10	540
SRY					0

Change in Last 24 Hours

	< 24 Hrs	24-48 Hrs	48 - 72 Hrs	> 72 Hrs
CN	50	-40	47	0
CP	-19	-69	26	-1
SRY				

Loaded Cars on Hand Vancouver Waiting for Placement - Last 30 Days All Railways



Port Terminal Status

Prince Rupert

Daily Activity for 11/17/2017

	Cars Arrived	Cars Received in Interchange	Cars Delivered in Interchange	Cars Placed for Unloading	Loads on Wheels at Destination As of 11/17/2017
CN	235			132	124

Port Unloads

	11/17	11/16	Week To Date	Last Week
CN	239	240	906	1,319

Age Profile of Loaded Cars Waiting Placement for Unloading

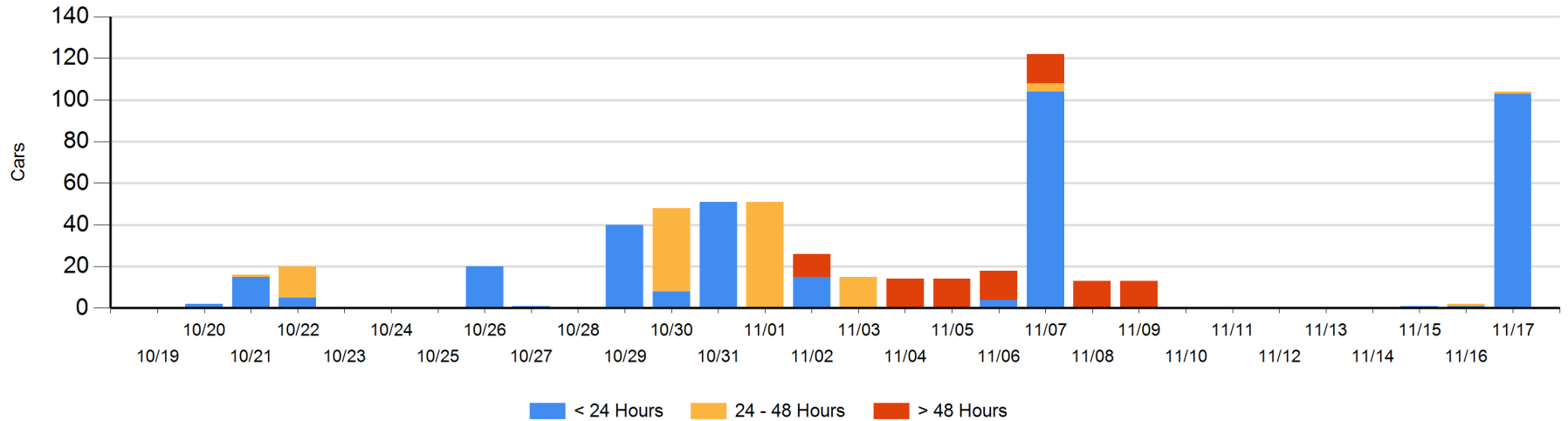
Today

	< 24 Hrs	24 - 48 Hrs	> 48-72 Hrs	> 72 Hrs	Total On Hand
CN	103	1			104

Change in Last 24 Hours

	< 24 Hrs	24-48 Hrs	48 - 72 Hrs	> 72 Hrs
CN	102	0		

Loaded Cars on Hand Prince Rupert Waiting for Placement - Last 30 Days All Railways



Port Terminal Status

Thunder Bay

Daily Activity for 11/17/2017

	Cars Arrived	Cars Received in Interchange	Cars Delivered in Interchange	Cars Placed for Unloading	Loads on Wheels at Destination As of 11/17/2017
CN	29			134	60
CP				107	41

Port Unloads

	11/17	11/16	Week To Date	Last Week
CN	213	140	671	378
CP	153	287	1,040	1,291

Age Profile of Loaded Cars Waiting Placement for Unloading

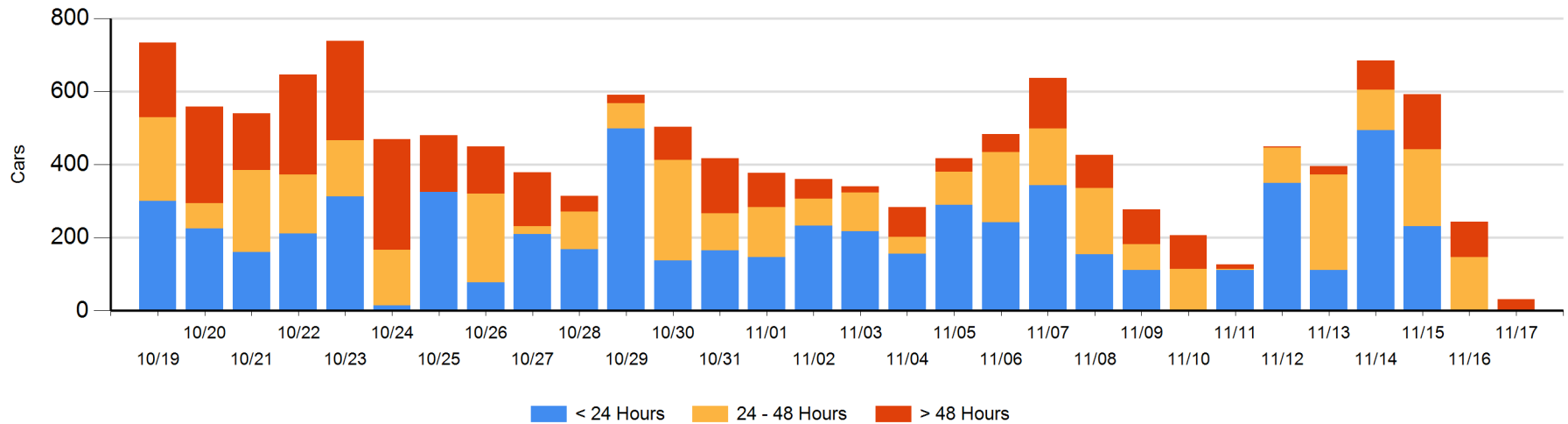
Today

	< 24 Hrs	24 - 48 Hrs	> 48-72 Hrs	> 72 Hrs	Total On Hand
CN		1			1
CP			8	23	31

Change in Last 24 Hours

	< 24 Hrs	24-48 Hrs	48 - 72 Hrs	> 72 Hrs
CN	-1	-104		
CP		-41	-45	-20

Loaded Cars on Hand Thunder Bay Waiting for Placement - Last 30 Days All Railways



Measurement Definitions

Loads on Wheels	<p>Count of loaded rail cars including all rail cars that have been released loaded at origin and have not been reported by the railway as unloaded at destination.</p> <p>Counts include all rail cars (hopper cars and boxcars) moving within a pipeline.</p>
Loads Not Moving	<p>Loaded rail cars for which the railways have not reported a movement event for 48 hours or more whether the rail car is at origin, enroute or at destination.</p>
Port Unloads	<p>Count of rail cars reported by railways as unloaded at the western port destinations of Vancouver, Prince Rupert and Thunder Bay.</p> <p>Unload counts include all rail cars (hopper cars and boxcars) unloaded by all receivers including major port terminals, transloaders and other receivers.</p>
Cars Arrived	<p>Count of rail cars reported as arrived at the destination railway terminal.</p>
Cars Received in Interchange	<p>Count of rail cars received in interchange by each railway within a destination railway terminal. Interchange activity is tracked for the Vancouver and Thunder Bay pipelines as applicable.</p>
Cars Delivered in Interchange	<p>Count of rail cars delivered in interchange by each railway within a destination railway terminal. Interchange activity is tracked for the Vancouver and Thunder Bay pipelines as applicable.</p>
Cars Placed for Unloading	<p>Count of rail cars reported by the railways as placed loaded at the receiver's facility for unloading.</p>
Loads on Wheels at Destination	<p>Count of rail cars that remain under load within the destination railway terminal including rail cars that have been reported as placed for unloading but not yet reported as unloaded.</p>
Waiting Placement for Unloading	<p>Count of rail cars that have been reported as arrived at the destination railway terminal but not reported as placed for unloading by the railway.</p> <p>For the Ports of Vancouver, Prince Rupert and Thunder Bay the count of rail cars waiting placement for unloading is categorized by age – i.e. the elapsed time from arrival at destination to the current report date.</p>