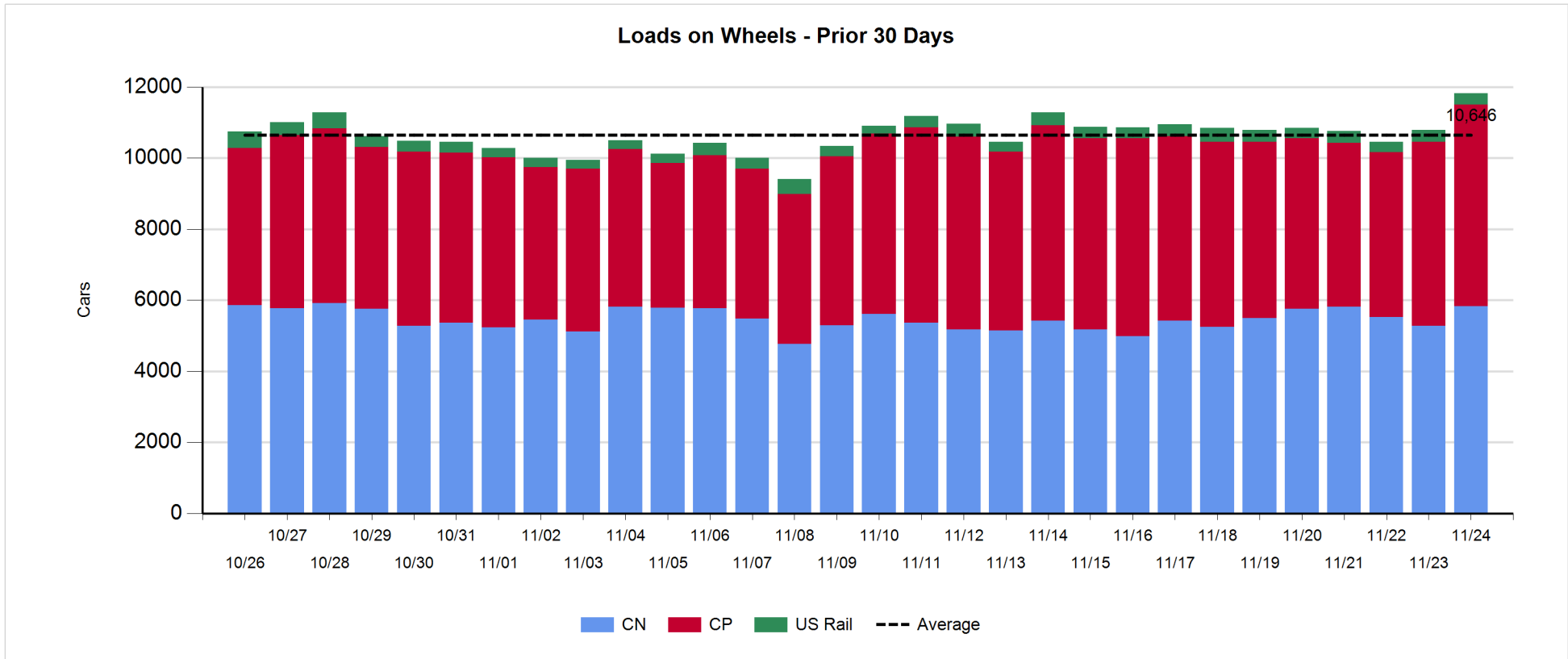


Daily Loads on Wheels - 11/24/2017

	E Canada	Prince Rupert	Thunder Bay	USA/MEX	Vancouver	Total
CN	572	871	315	302	3,772	5,832
CP	171		1,399	265	3,839	5,674
Short Line	2				17	19
US Rail				288		288
	745	871	1,714	855	7,628	11,813

Change in Loads on Wheels - Prior 24 Hours

	E Canada	Prince Rupert	Thunder Bay	USA/MEX	Vancouver	Total
CN	99	233	-29	59	194	556
CP	-2		387	2	106	493
Short Line	-18				-7	-25
US Rail				0		0
	79	233	358	61	293	1,024

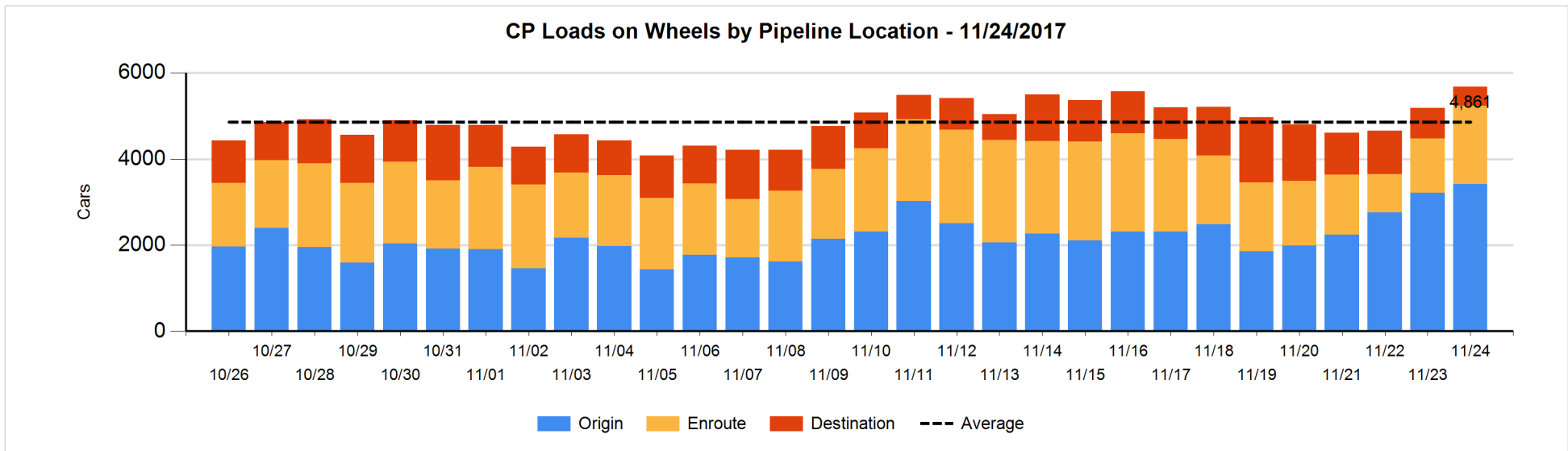
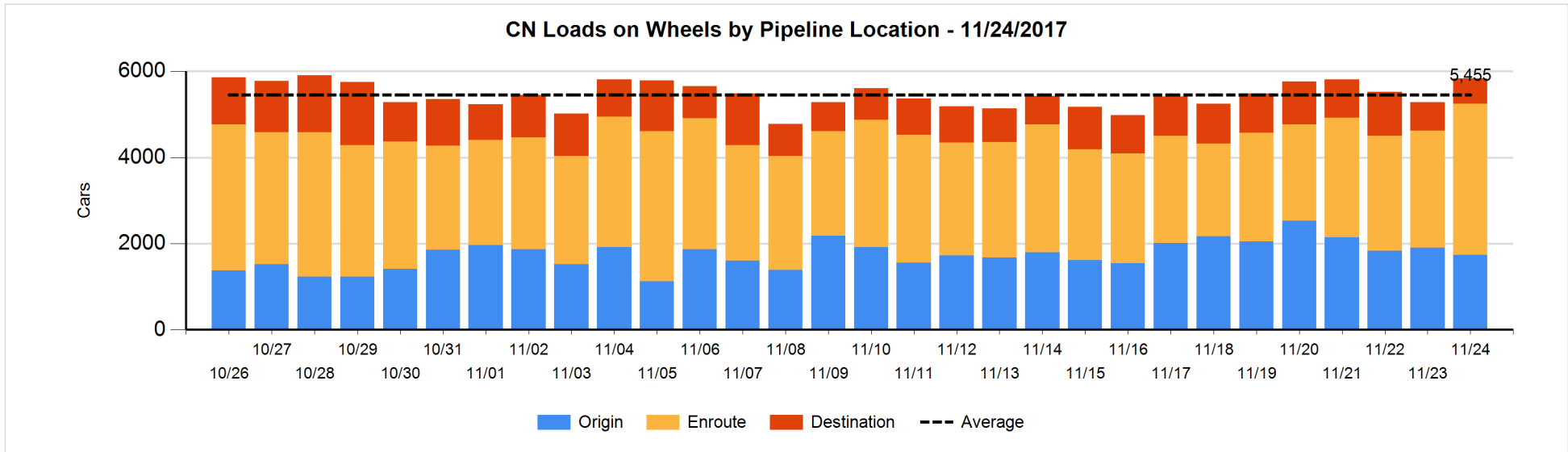


Daily Loads on Wheels By Pipeline Location - 11/24/2017

	E Canada	Prince Rupert	Thunder Bay	USA/MEX	Vancouver	Total
CN						
Origin	137	414	50	70	1,061	1,732
Enroute	331	350	202	171	2,455	3,509
Destination	104	107	63	61	256	591
	572	871	315	302	3,772	5,832
CP						
Origin	39		741	179	2,457	3,416
Enroute	125		554	64	1,071	1,814
Destination	7		104	22	311	444
	171		1,399	265	3,839	5,674
US Rail / Short Line						
Origin						
Enroute	2			215		217
Destination				73	17	90
	2			288	17	307

Change in Daily Loads on Wheels By Pipeline Location - Prior 24 Hours

	E Canada	Prince Rupert	Thunder Bay	USA/MEX	Vancouver	Total
CN						
Origin	39	272	-98	59	-448	-176
Enroute	75	-10	50	-33	709	791
Destination	-15	-29	19	33	-67	-59
	99	233	-29	59	194	556
CP						
Origin	-74		120	-25	183	204
Enroute	66		201	27	257	551
Destination	6		66	0	-334	-262
	-2		387	2	106	493
US Rail / Short Line						
Origin						
Enroute	2			-24		-22
Destination	-20			24	-7	-3
	-18			0	-7	-25

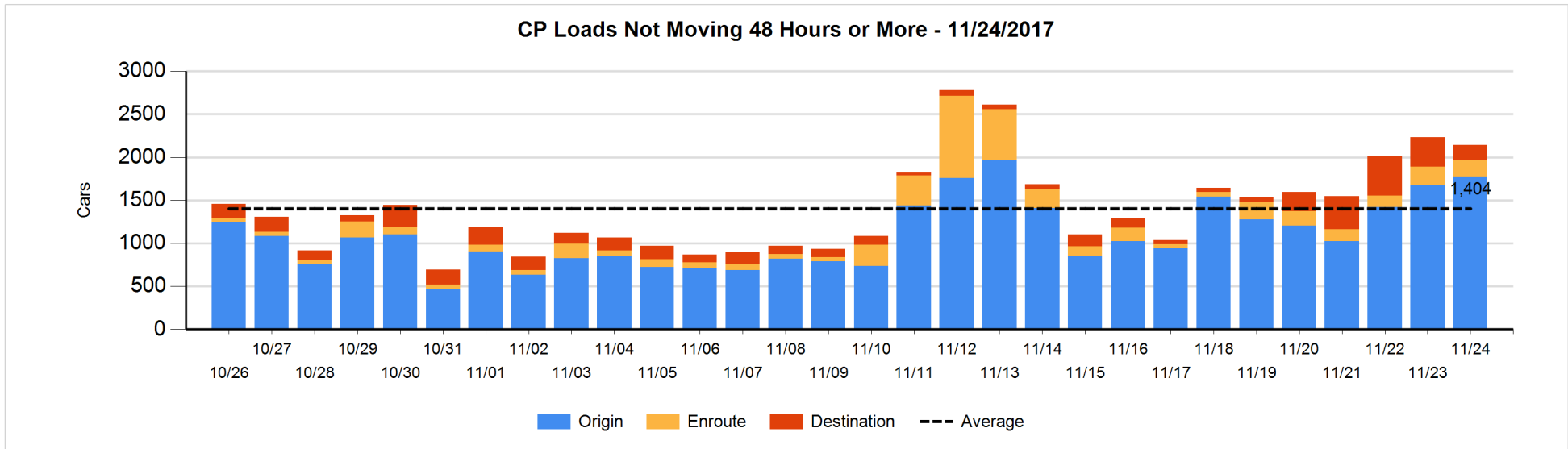
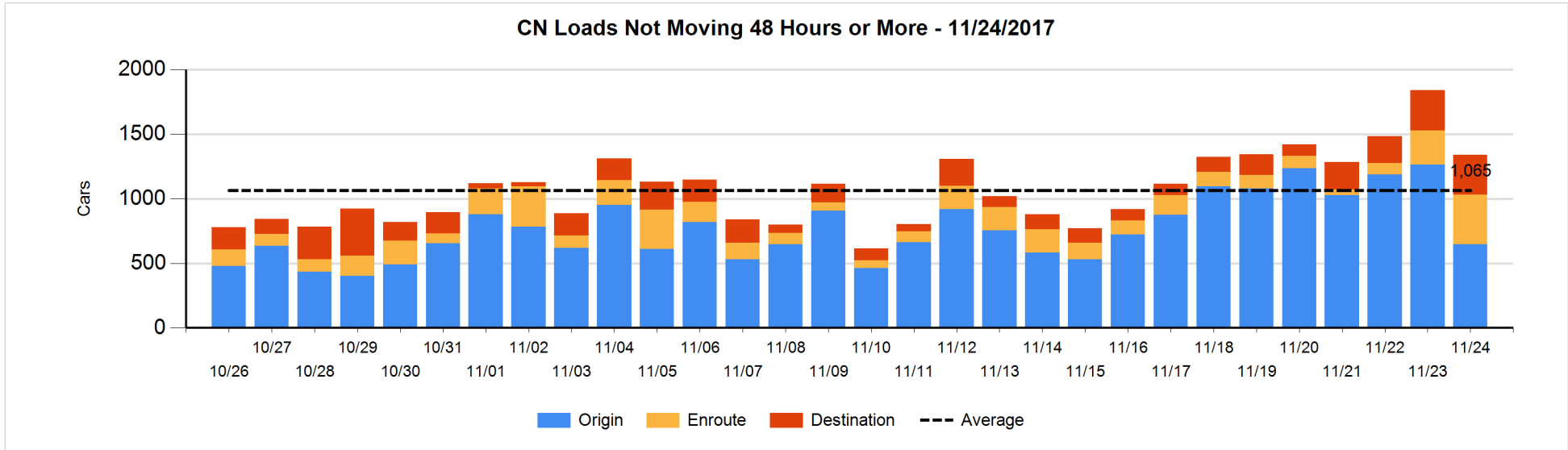


Loads Not Moving 48 Hours or More - 11/24/2017

	E Canada	Prince Rupert	Thunder Bay	USA/MEX	Vancouver	Total
CN						
Origin		45		5	595	645
Enroute	24	61	1	39	260	385
Destination	42	5	2	25	235	309
	66	111	3	69	1090	1339
CP						
Origin	30		106	176	1462	1774
Enroute	12			3	178	193
Destination	1			22	153	176
	43		106	201	1793	2143
US Rail / Short Line						
Origin						
Enroute				59		59
Destination				37	5	42
				96	5	101

Change in Loads Not Moving 48 Hours or More - 11/24/2017

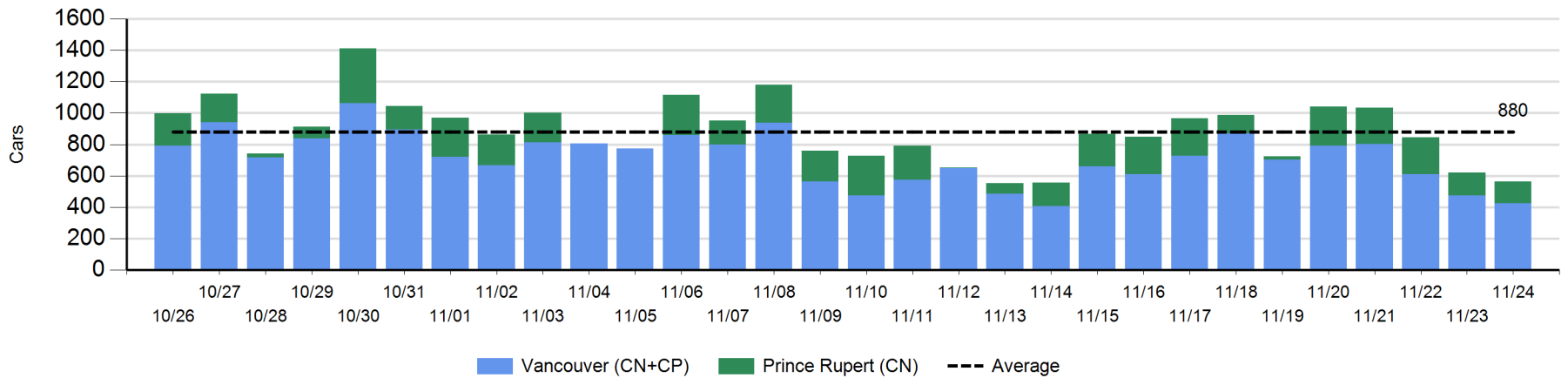
	E Canada	Prince Rupert	Thunder Bay	USA/MEX	Vancouver	Total
CN						
Origin		0		-1	-619	-620
Enroute	1	30	0	1	89	121
Destination	13	0	1	8	-23	-1
	14	30	1	8	-553	-500
CP						
Origin	5		-156	26	226	101
Enroute	9			-1	-34	-26
Destination	1			0	-165	-164
	15		-156	25	27	-89
US Rail / Short Line						
Origin						
Enroute				33		33
Destination				0	-8	-8
				33	-8	25



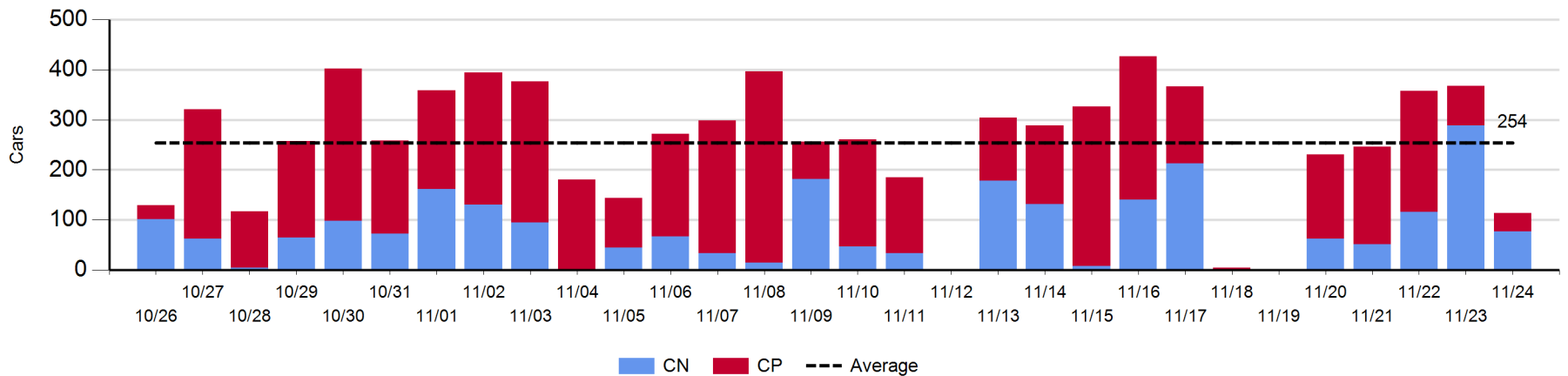
Port Unloads - 11/24/2017

	Prince Rupert	Vancouver	West Coast Total	Thunder Bay	Total
CN	140	65	205	77	282
CP		360	360	37	397
	140	425	565	114	679

West Coast Port Unloads - Prior 30 Days



Thunder Bay Port Unloads - Prior 30 Days



Port Terminal Status

Vancouver

Daily Activity for 11/24/2017

	Cars Arrived	Cars Received in Interchange	Cars Delivered in Interchange	Cars Placed for Unloading	Loads on Wheels at Destination As of 11/24/2017
CN	24		26	16	256
CP	7	23	1	274	311
SRY		4		3	17

Port Unloads

	11/24	11/23	Week To Date	Last Week
CN	65	113	1,113	1,979
CP	360	363	1,990	2,479
SRY	12	9	64	32

Age Profile of Loaded Cars Waiting Placement for Unloading

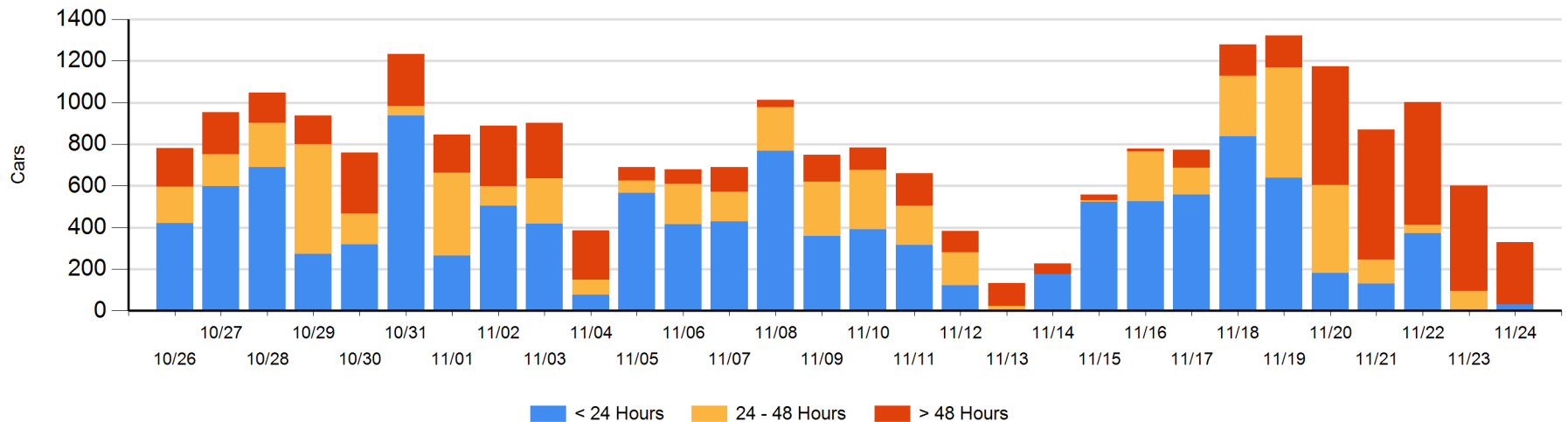
Today

	< 24 Hrs	24 - 48 Hrs	> 48-72 Hrs	> 72 Hrs	Total On Hand
CN	24		32	93	149
CP	7		3	171	181
SRY					0

Change in Last 24 Hours

	< 24 Hrs	24-48 Hrs	48 - 72 Hrs	> 72 Hrs
CN	24	-74	26	-125
CP	7	-21	-17	-92
SRY				

Loaded Cars on Hand Vancouver Waiting for Placement - Last 30 Days All Railways



Port Terminal Status

Prince Rupert

Daily Activity for 11/24/2017

	Cars Arrived	Cars Received in Interchange	Cars Delivered in Interchange	Cars Placed for Unloading	Loads on Wheels at Destination As of 11/24/2017
CN	111			111	107

Port Unloads

	11/24	11/23	Week To Date	Last Week
CN	140	145	1,002	1,042

Age Profile of Loaded Cars Waiting Placement for Unloading

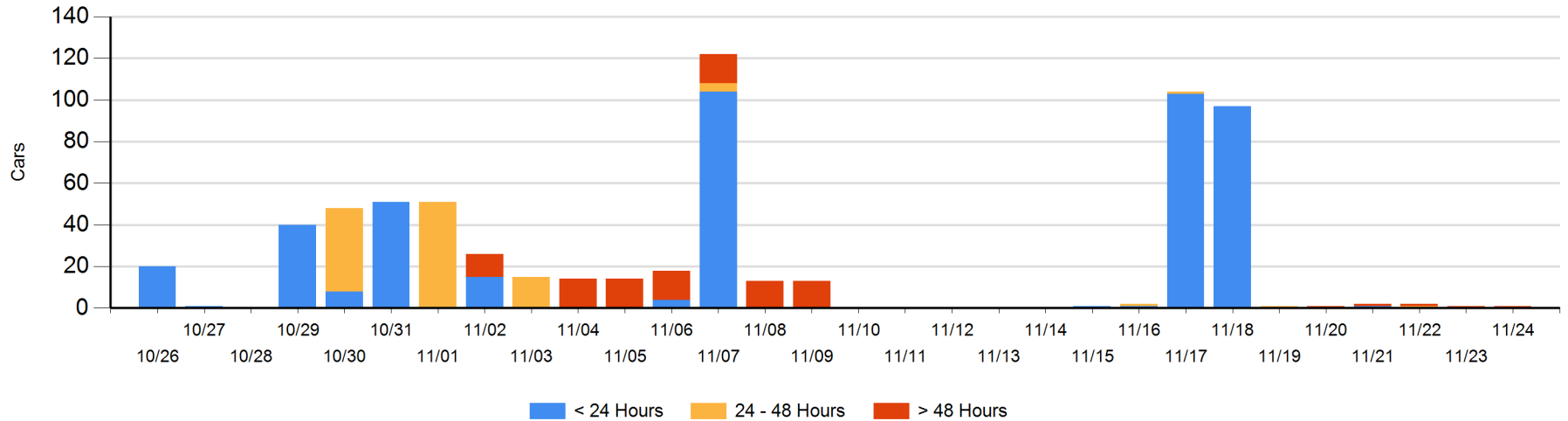
Today

	< 24 Hrs	24 - 48 Hrs	> 48-72 Hrs	> 72 Hrs	Total On Hand
CN				1	1

Change in Last 24 Hours

	< 24 Hrs	24-48 Hrs	48 - 72 Hrs	> 72 Hrs
CN				0

Loaded Cars on Hand Prince Rupert Waiting for Placement - Last 30 Days All Railways



Port Terminal Status

Thunder Bay

Daily Activity for 11/24/2017

	Cars Arrived	Cars Received in Interchange	Cars Delivered in Interchange	Cars Placed for Unloading	Loads on Wheels at Destination As of 11/24/2017
CN	98			86	63
CP	103			19	104

Port Unloads

	11/24	11/23	Week To Date	Last Week
CN	77	288	594	671
CP	37	79	722	1,045

Age Profile of Loaded Cars Waiting Placement for Unloading

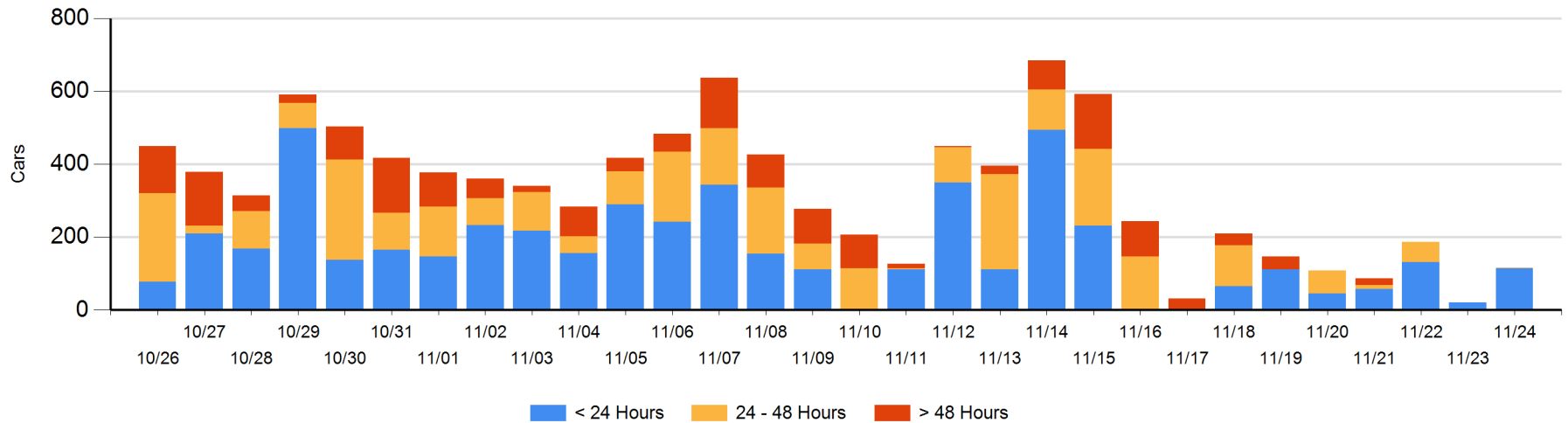
Today

	< 24 Hrs	24 - 48 Hrs	> 48-72 Hrs	> 72 Hrs	Total On Hand
CN	12				12
CP	103	1			104

Change in Last 24 Hours

	< 24 Hrs	24-48 Hrs	48 - 72 Hrs	> 72 Hrs
CN	12			
CP	83	1		

Loaded Cars on Hand Thunder Bay Waiting for Placement - Last 30 Days All Railways



Measurement Definitions

Loads on Wheels	<p>Count of loaded rail cars including all rail cars that have been released loaded at origin and have not been reported by the railway as unloaded at destination.</p> <p>Counts include all rail cars (hopper cars and boxcars) moving within a pipeline.</p>
Loads Not Moving	<p>Loaded rail cars for which the railways have not reported a movement event for 48 hours or more whether the rail car is at origin, enroute or at destination.</p>
Port Unloads	<p>Count of rail cars reported by railways as unloaded at the western port destinations of Vancouver, Prince Rupert and Thunder Bay.</p> <p>Unload counts include all rail cars (hopper cars and boxcars) unloaded by all receivers including major port terminals, transloaders and other receivers.</p>
Cars Arrived	<p>Count of rail cars reported as arrived at the destination railway terminal.</p>
Cars Received in Interchange	<p>Count of rail cars received in interchange by each railway within a destination railway terminal. Interchange activity is tracked for the Vancouver and Thunder Bay pipelines as applicable.</p>
Cars Delivered in Interchange	<p>Count of rail cars delivered in interchange by each railway within a destination railway terminal. Interchange activity is tracked for the Vancouver and Thunder Bay pipelines as applicable.</p>
Cars Placed for Unloading	<p>Count of rail cars reported by the railways as placed loaded at the receiver's facility for unloading.</p>
Loads on Wheels at Destination	<p>Count of rail cars that remain under load within the destination railway terminal including rail cars that have been reported as placed for unloading but not yet reported as unloaded.</p>
Waiting Placement for Unloading	<p>Count of rail cars that have been reported as arrived at the destination railway terminal but not reported as placed for unloading by the railway.</p> <p>For the Ports of Vancouver, Prince Rupert and Thunder Bay the count of rail cars waiting placement for unloading is categorized by age – i.e. the elapsed time from arrival at destination to the current report date.</p>