

Note: Effective with the report for November 27, 2017 the Daily Network Status Report reflects performance and data for the prior day removing the 24 hour lag time which was in place for reporting previously.

Loads on Wheels

- System wide loads on wheels decreased in the prior 24 hours for the second consecutive day - loads now at 11,815 - 9% above the trailing 30 day average
- In total loads on wheels declined by 479 cars reflecting declines in CN volumes (-670) and an increase in CP volumes (+144).
- CN volumes decreased in all corridors other than Thunder Bay which increased nominally. System wide CN loads on wheels are now at 5,583 - below 6,000 for the first time in the prior four days and 2% above the trailing 30 day average.
- CP volumes increased in 3 of 4 corridors with minor increases seen in the Thunder Bay, Vancouver and USA corridors. System wide loads at 5,875 - 18% above the trailing 30 day average.
- Vancouver now at 7,014 - above 7,000 for the 8th consecutive day and 5% higher than the trailing 30 day average, Prince Rupert at 902 - below 1,000 for the 8th consecutive day - and Thunder Bay at 2,302 - the highest level in the prior 30 days and 54% higher than the trailing 30 day average. Reduced volumes in the Prince Rupert corridor continue to reflect CN hopper car rationing policies with CN rationing more than 700 hopper car orders in weeks 17 and 18 and a total of 1,300 in the prior 3 weeks.

Loads Not Moving

- The count of loaded cars not moving on CN and CP for 48 hours or more declined by 211 cars in the prior 24 hours; total cars on CN and CP not moving for 48 hours now at 3,681.
- CN
 - The count of cars not moving is unchanged in the prior 24 hours - loads on wheels now idle for 48 hours or more at 1,437
 - Counts increased somewhat in the Vancouver (+105) corridor offset by nominal declines in other corridors.
 - 57% of cars (817) are dwelling at origin locations with the majority destined to Vancouver
- CP
 - CP counts declined by 211 cars in total reflecting a decline in the Vancouver corridor (-255) offset by an increase in the Thunder Bay corridor (+81) - idle cars now at 2,244
 - 80% of cars are dwelling at origin - 1,7995 cars - 90% of them destined to Vancouver.

Port Performance

- CN and CP unloaded a total of 1,361 cars at the three western ports - slightly better than average Tuesday performance during the prior 30 days. Through the first 2 days of week 18 unloads are less than 100 unloads behind last week recognizing that last week's unloads were significantly below the trailing 4 week average.
- Unload performance at Vancouver and Thunder Bay are well ahead of last week's pace with Prince Rupert trailing significantly - almost 400 unloads behind through the first 2 days of the week.
- Vancouver
 - Total of 943 cars reported unloaded by CN and CP at the Port of Vancouver; CN - 507 and CP - 436
 - There are currently 861 cars on hand at Vancouver waiting placement for unloading.
- Thunder Bay
 - Total of 393 cars reported unloaded by CN and CP in the prior 24 hours
 - Cars at Thunder Bay waiting placement now at 937 following the arrival of nearly 600 cars in the prior 24 hours.

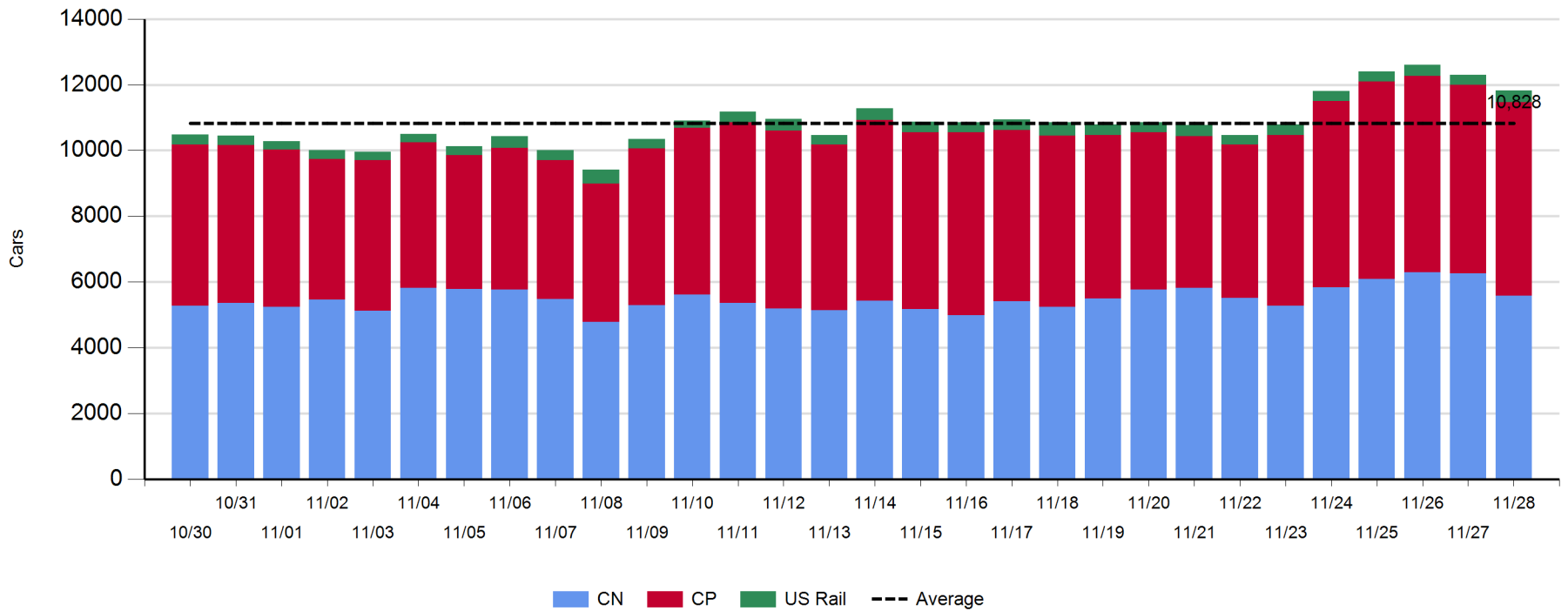
Daily Loads on Wheels - 11/28/2017

	E Canada	Prince Rupert	Thunder Bay	USA/MEX	Vancouver	Total
CN	400	902	571	326	3,384	5,583
CP	163		1,731	377	3,604	5,875
Short Line	1				26	27
US Rail				330		330
	564	902	2,302	1,033	7,014	11,815

Change in Loads on Wheels - Prior 24 Hours

	E Canada	Prince Rupert	Thunder Bay	USA/MEX	Vancouver	Total
CN	-90	-22	7	-68	-497	-670
CP	-3		32	42	73	144
Short Line	-17				8	-9
US Rail				56		56
	-110	-22	39	30	-416	-479

Loads on Wheels - Prior 30 Days

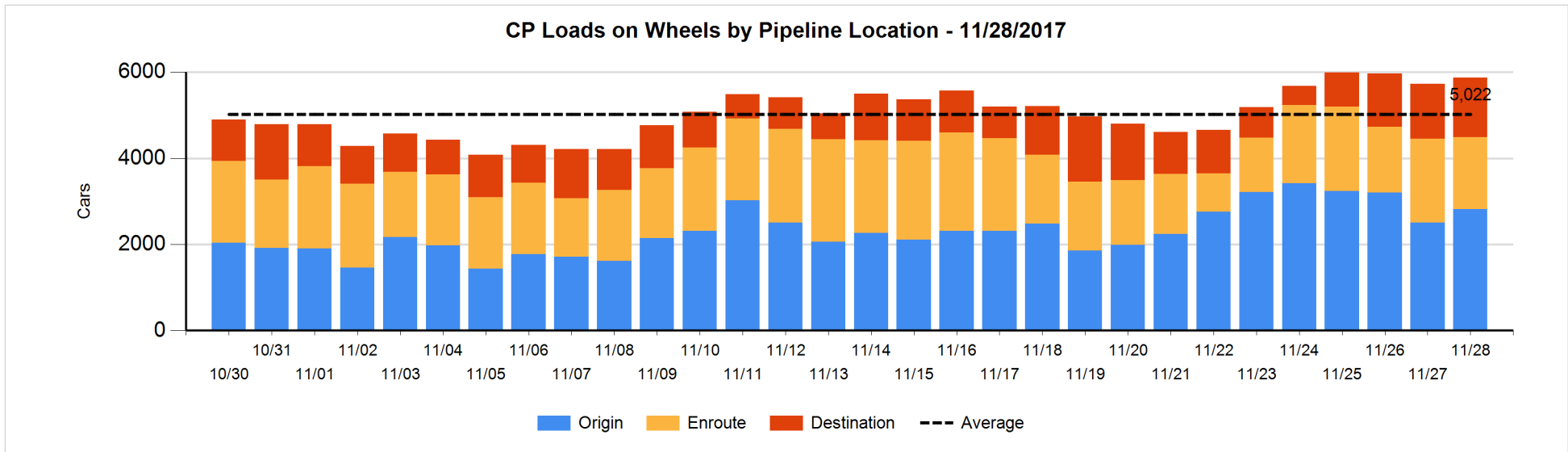
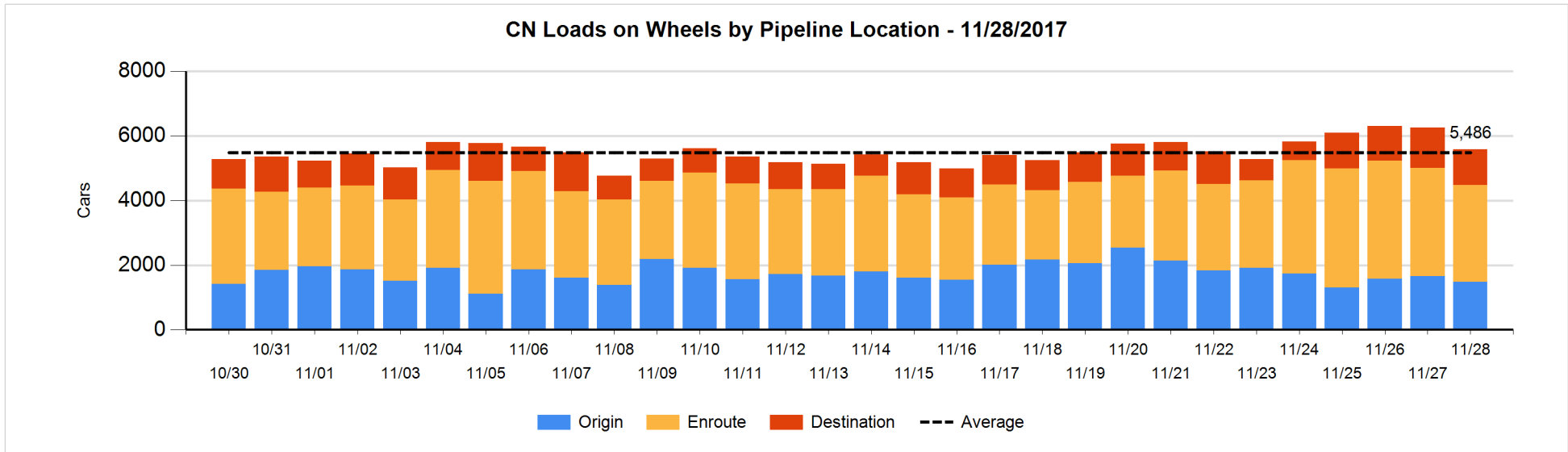


Daily Loads on Wheels By Pipeline Location - 11/28/2017

	E Canada	Prince Rupert	Thunder Bay	USA/MEX	Vancouver	Total
CN						
Origin		100	259	85	1,043	1,487
Enroute	229	768	100	166	1,731	2,994
Destination	171	34	212	75	610	1,102
	400	902	571	326	3,384	5,583
CP						
Origin	9		677	158	1,968	2,812
Enroute	125		250	182	1,120	1,677
Destination	29		804	37	516	1,386
	163		1,731	377	3,604	5,875
US Rail / Short Line						
Origin						
Enroute				191		191
Destination	1			139	26	166
	1			330	26	357

Change in Daily Loads on Wheels By Pipeline Location - Prior 24 Hours

	E Canada	Prince Rupert	Thunder Bay	USA/MEX	Vancouver	Total
CN						
Origin	-7	-82	-50	-56	29	-166
Enroute	-113	38	-48	0	-231	-354
Destination	30	22	105	-12	-295	-150
	-90	-22	7	-68	-497	-670
CP						
Origin	-26		249	101	-21	303
Enroute	1		-366	-55	149	-271
Destination	22		149	-4	-55	112
	-3		32	42	73	144
US Rail / Short Line						
Origin						
Enroute	-1			13		12
Destination	-16			43	8	35
	-17			56	8	47

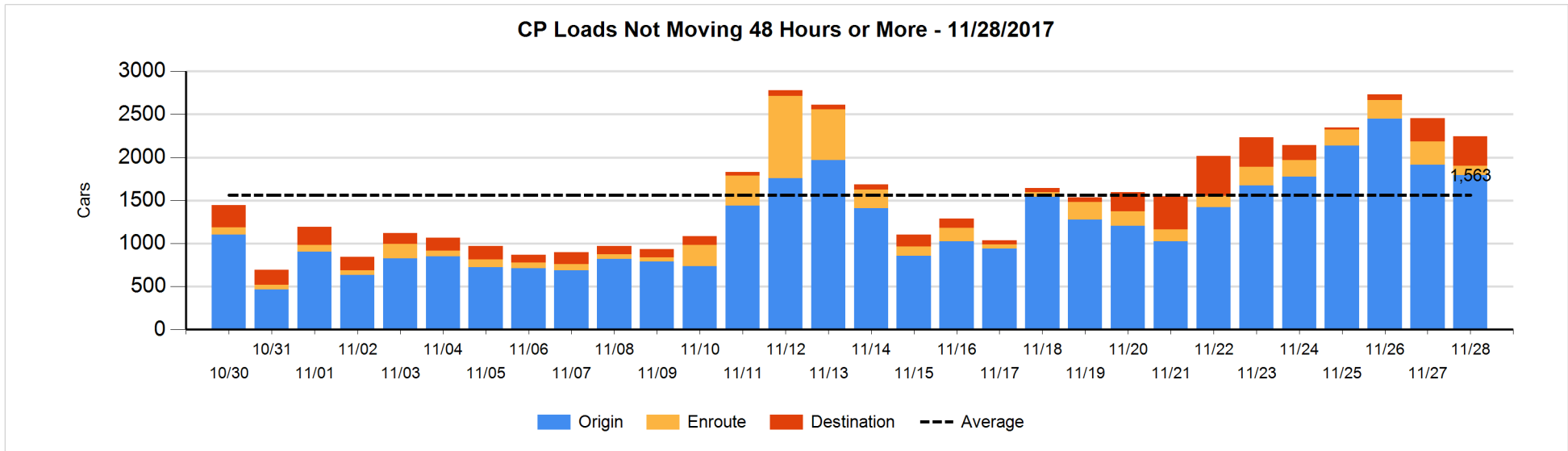
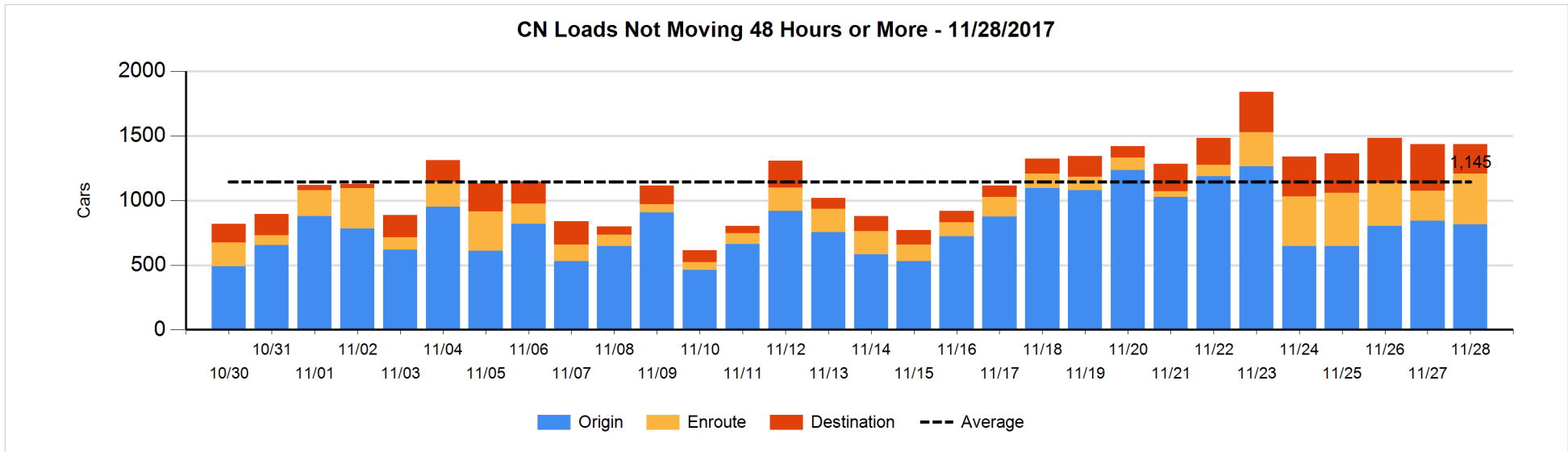


Loads Not Moving 48 Hours or More - 11/28/2017

	E Canada	Prince Rupert	Thunder Bay	USA/MEX	Vancouver	Total
CN						
Origin		97	110	79	531	817
Enroute	25	20		79	268	392
Destination	59	11	5	37	116	228
	84	128	115	195	915	1437
CP						
Origin	8		150	50	1587	1795
Enroute	26			31	50	107
Destination	4		218	3	117	342
	38		368	84	1754	2244
US Rail / Short Line						
Origin						
Enroute				21		21
Destination				33	7	40
				54	7	61

Change in Loads Not Moving 48 Hours or More - 11/28/2017

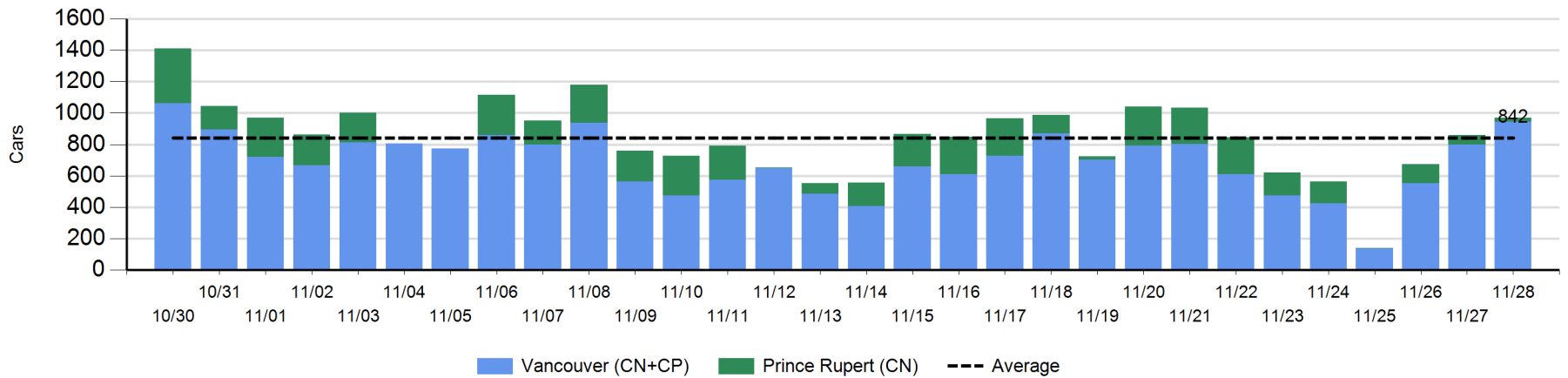
	E Canada	Prince Rupert	Thunder Bay	USA/MEX	Vancouver	Total
CN						
Origin		0	0	-13	-12	-25
Enroute	-11	-20		0	189	158
Destination	-51	0	3	-13	-72	-133
	-62	-20	3	-26	105	0
CP						
Origin	-26		68	-4	-159	-121
Enroute	1			2	-162	-159
Destination	4		13	-14	66	69
	-21		81	-16	-255	-211
US Rail / Short Line						
Origin						
Enroute				-14		-14
Destination				15	3	18
				1	3	4



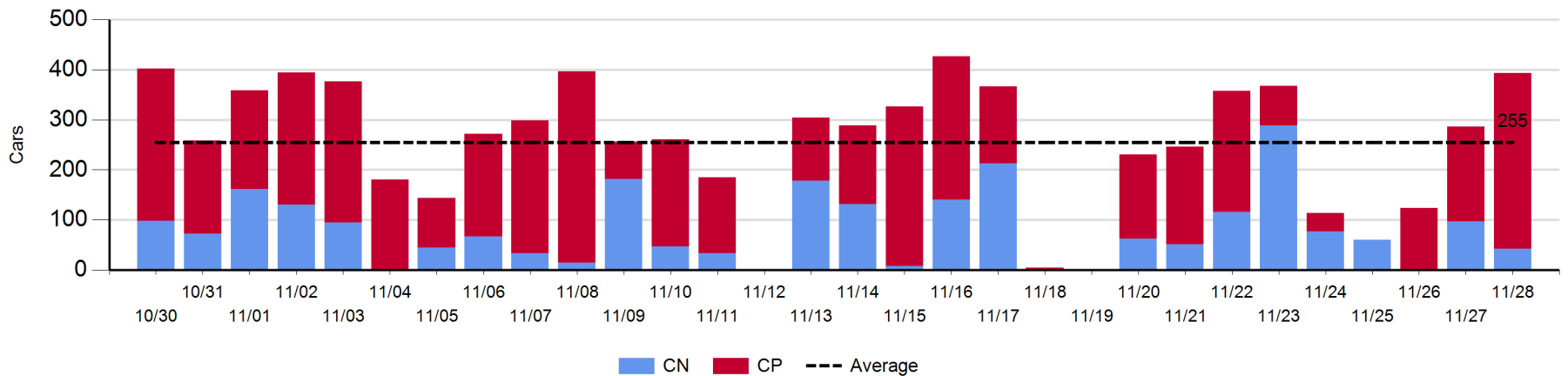
Port Unloads - 11/28/2017

	Prince Rupert	Vancouver	West Coast Total	Thunder Bay	Total
CN	25	507	532	42	574
CP		436	436	351	787
	25	943	968	393	1,361

West Coast Port Unloads - Prior 30 Days



Thunder Bay Port Unloads - Prior 30 Days



Port Terminal Status

Vancouver

Daily Activity for 11/28/2017

	Cars Arrived	Cars Received in Interchange	Cars Delivered in Interchange	Cars Placed for Unloading	Loads on Wheels at Destination As of 11/28/2017
CN	418	20	277	462	610
CP	124	273	31	441	516
SRY		15		6	26

Port Unloads

	11/28	11/27	Week To Date	Last Week
CN	507	419	926	1,407
CP	436	379	815	2,386
SRY	7	8	15	69

Age Profile of Loaded Cars Waiting Placement for Unloading

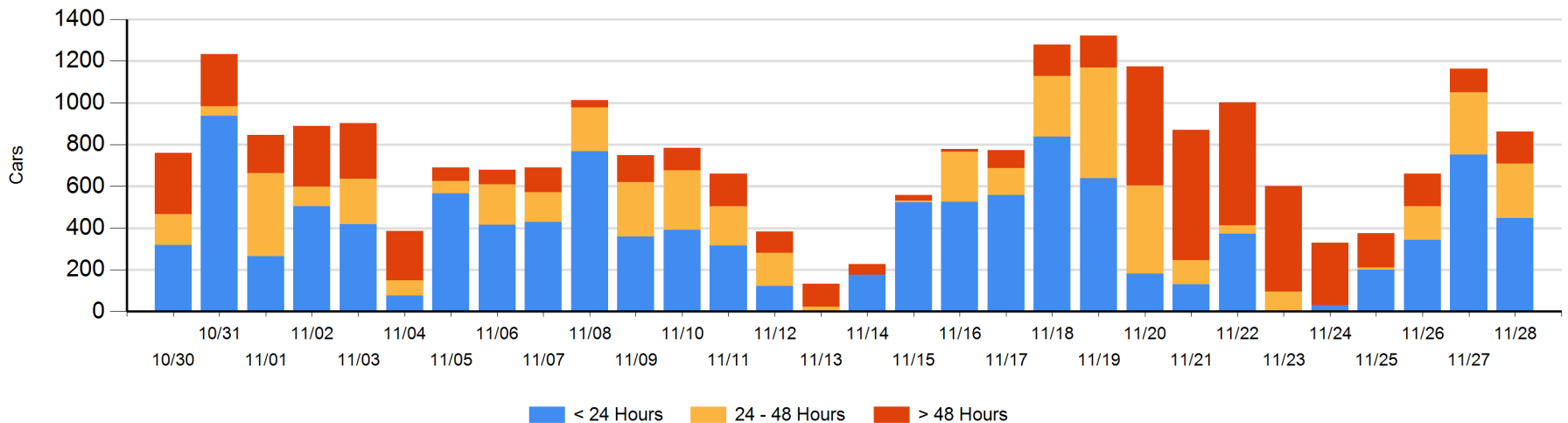
Today

	< 24 Hrs	24 - 48 Hrs	> 48-72 Hrs	> 72 Hrs	Total On Hand
CN	324	226		18	568
CP	124	36	122	11	293
SRY					0

Change in Last 24 Hours

	< 24 Hrs	24-48 Hrs	48 - 72 Hrs	> 72 Hrs
CN	-226	60	-12	-4
CP	-78	-97	112	-56
SRY				

Loaded Cars on Hand Vancouver Waiting for Placement - Last 30 Days All Railways



Port Terminal Status

Prince Rupert

Daily Activity for 11/28/2017

	Cars Arrived	Cars Received in Interchange	Cars Delivered in Interchange	Cars Placed for Unloading	Loads on Wheels at Destination As of 11/28/2017
CN	48			48	34

Port Unloads

	11/28	11/27	Week To Date	Last Week
CN	25	61	86	1,126

Age Profile of Loaded Cars Waiting Placement for Unloading

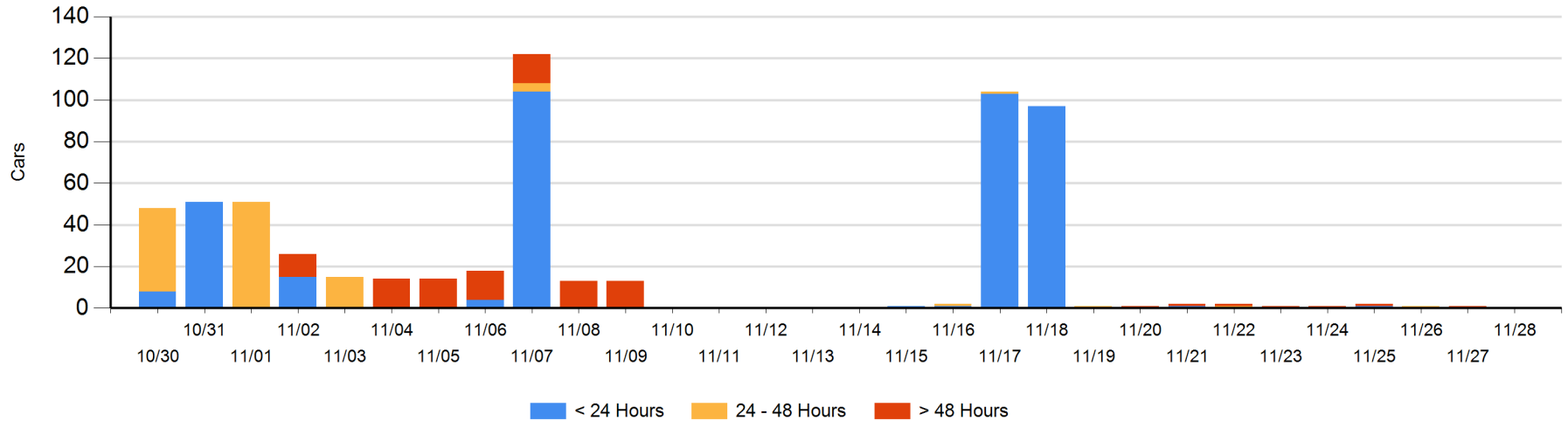
Today

	< 24 Hrs	24 - 48 Hrs	> 48-72 Hrs	> 72 Hrs	Total On Hand
CN					0

Change in Last 24 Hours

	< 24 Hrs	24-48 Hrs	48 - 72 Hrs	> 72 Hrs
CN			-1	

Loaded Cars on Hand Prince Rupert Waiting for Placement - Last 30 Days All Railways



Port Terminal Status

Thunder Bay

Daily Activity for 11/28/2017

	Cars Arrived	Cars Received in Interchange	Cars Delivered in Interchange	Cars Placed for Unloading	Loads on Wheels at Destination As of 11/28/2017
CN	147			84	212
CP	505			368	804

Port Unloads

	11/28	11/27	Week To Date	Last Week
CN	42	97	139	654
CP	351	189	540	846

Age Profile of Loaded Cars Waiting Placement for Unloading

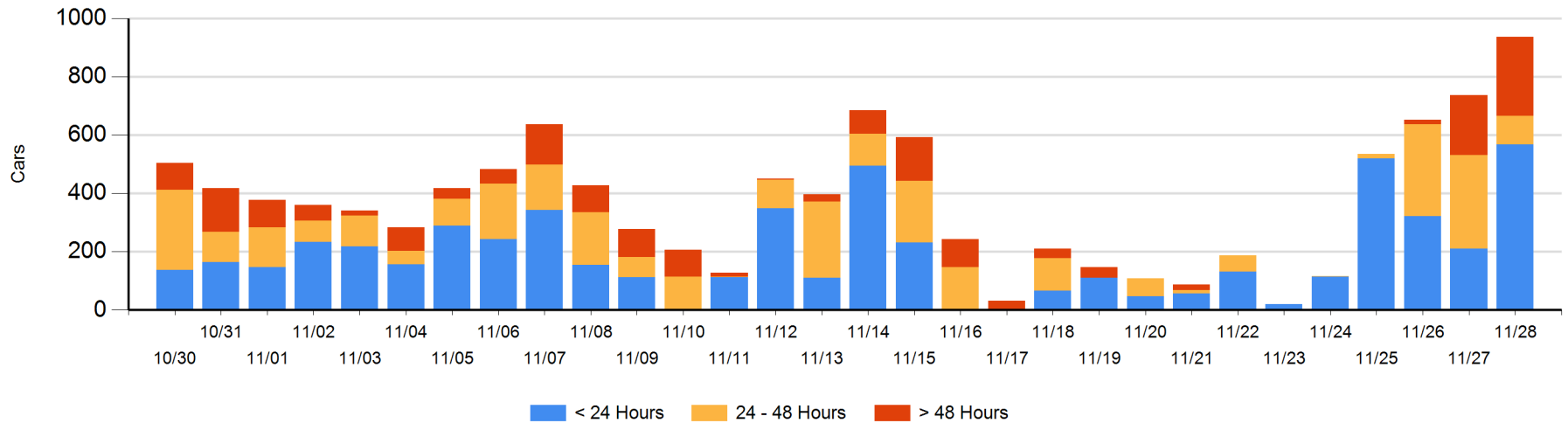
Today

	< 24 Hrs	24 - 48 Hrs	> 48-72 Hrs	> 72 Hrs	Total On Hand
CN	63	98	3		164
CP	505		179	89	773

Change in Last 24 Hours

	< 24 Hrs	24-48 Hrs	48 - 72 Hrs	> 72 Hrs
CN	-35	95	3	
CP	393	-319	-26	89

Loaded Cars on Hand Thunder Bay Waiting for Placement - Last 30 Days All Railways



Measurement Definitions

Loads on Wheels	<p>Count of loaded rail cars including all rail cars that have been released loaded at origin and have not been reported by the railway as unloaded at destination.</p> <p>Counts include all rail cars (hopper cars and boxcars) moving within a pipeline.</p>
Loads Not Moving	<p>Loaded rail cars for which the railways have not reported a movement event for 48 hours or more whether the rail car is at origin, enroute or at destination.</p>
Port Unloads	<p>Count of rail cars reported by railways as unloaded at the western port destinations of Vancouver, Prince Rupert and Thunder Bay.</p> <p>Unload counts include all rail cars (hopper cars and boxcars) unloaded by all receivers including major port terminals, transloaders and other receivers.</p>
Cars Arrived	<p>Count of rail cars reported as arrived at the destination railway terminal.</p>
Cars Received in Interchange	<p>Count of rail cars received in interchange by each railway within a destination railway terminal. Interchange activity is tracked for the Vancouver and Thunder Bay pipelines as applicable.</p>
Cars Delivered in Interchange	<p>Count of rail cars delivered in interchange by each railway within a destination railway terminal. Interchange activity is tracked for the Vancouver and Thunder Bay pipelines as applicable.</p>
Cars Placed for Unloading	<p>Count of rail cars reported by the railways as placed loaded at the receiver's facility for unloading.</p>
Loads on Wheels at Destination	<p>Count of rail cars that remain under load within the destination railway terminal including rail cars that have been reported as placed for unloading but not yet reported as unloaded.</p>
Waiting Placement for Unloading	<p>Count of rail cars that have been reported as arrived at the destination railway terminal but not reported as placed for unloading by the railway.</p> <p>For the Ports of Vancouver, Prince Rupert and Thunder Bay the count of rail cars waiting placement for unloading is categorized by age – i.e. the elapsed time from arrival at destination to the current report date.</p>