

Loads on Wheels

- System wide loads on wheels declined for the 4th consecutive day and are now below 10,300 - a decline of 1,000 cars in the prior 4 days and 6% below the trailing 30 day average
- The majority of the change is attributable to reduced volumes on CN with little net change seen on CP in the prior 24 hours
- The largest reductions were seen in the CN Prince Rupert and Thunder Bay corridors offset by an increase the USA / Mexico corridor. The Prince Rupert corridor loads on wheels are at their lowest point in the prior 30 days and 30% below the trailing 30 day average. Contributing to this is the rationing of more than 1,100 orders in the Prince Rupert corridor in the prior 3 weeks including more than 300 last week (week 13).
- Vancouver now above 6,200 cars while Thunder Bay has dropped below 1,700 and Prince Rupert below 1,200

Loads Not Moving

- The count of loaded cars not moving for 48 hours increased by 725 cars on CN and CP lines in the prior 24 hours and is now above 2,300
- Counts increased for both CN and CP in the prior 24 hours.
- CN
 - The count of cars not moving increased by 225 cars in total - loads on wheels now idle for 48 hours or more at 1,119
 - Counts increased in all corridors other than Thunder Bay which saw a 121 car decline
 - 80% of cars are dwelling at origin locations - including 655 destined to Vancouver and 201 destined to Prince Rupert
- CP
 - CP counts increased by 500 cars in the prior 24 hours with 90% of the increase seen in the Vancouver corridor
 - 75% of cars are dwelling at origin including 739 destined to Vancouver and 105 destined to Thunder Bay

Port Performance

- CN and CP unloaded a total of 1,327 cars at the three western ports - through the first 3 days of Grain Week 14 west coast unloads are at 4,000 approximately 25% ahead of last week's pace
- Vancouver
 - Total of 720 cars reported unloaded by CN and CP at the Port of Vancouver; CN - 380 and CP 340
 - There are currently more than 800 cars at Vancouver waiting placement for unloading - of these CP has more than 150 cars that arrived at Vancouver more than 72 hours ago
- Thunder Bay
 - 359 unloads at Thunder Bay; CN - 162 and CP 197
 - Cars at Thunder Bay waiting placement remains near 400 with 80% on CP.

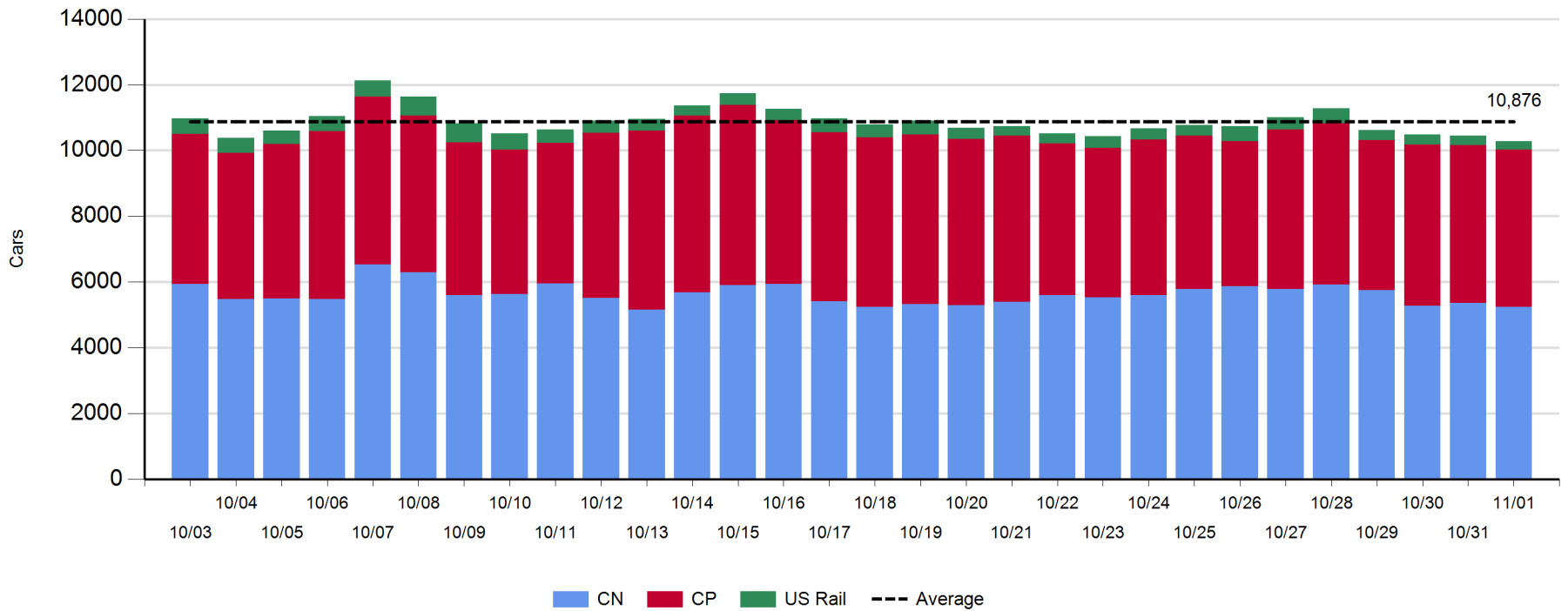
Daily Loads on Wheels - 11/1/2017

	E Canada	Prince Rupert	Thunder Bay	USA/MEX	Vancouver	Total
CN	194	1,162	428	471	2,975	5,230
CP	116		1,208	246	3,218	4,788
Short Line	4				29	33
US Rail				234		234
	314	1,162	1,636	951	6,222	10,285

Change in Loads on Wheels - Prior 24 Hours

	E Canada	Prince Rupert	Thunder Bay	USA/MEX	Vancouver	Total
CN	-9	-158	-111	152	-3	-129
CP	32		-135	-3	99	-7
Short Line	1				1	2
US Rail				-32		-32
	24	-158	-246	117	97	-166

Loads on Wheels - Prior 30 Days

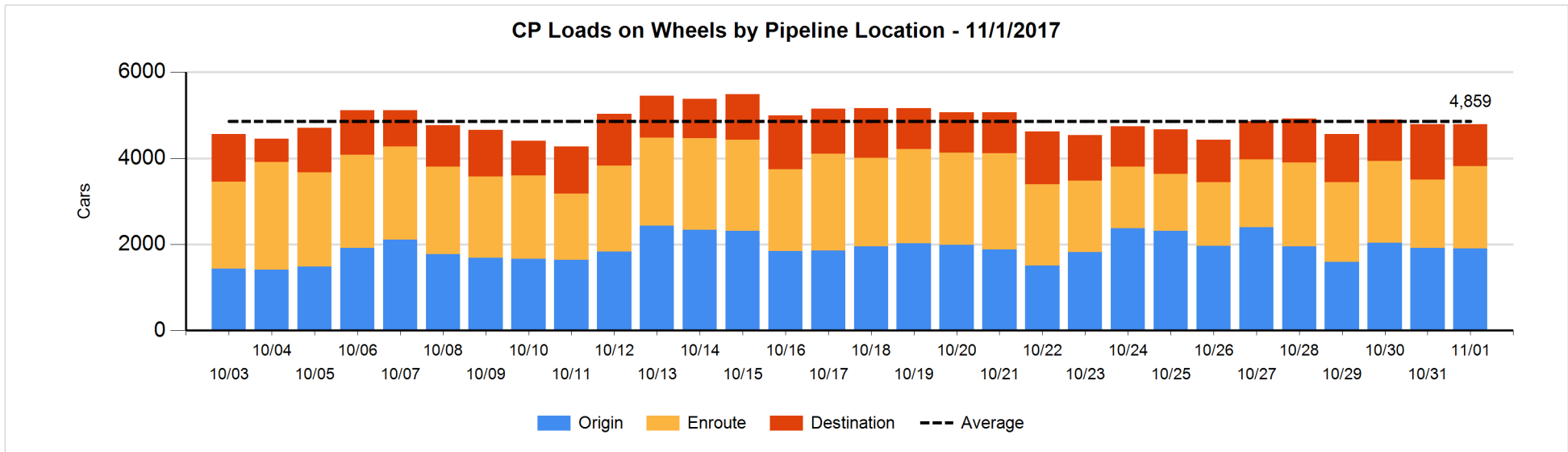
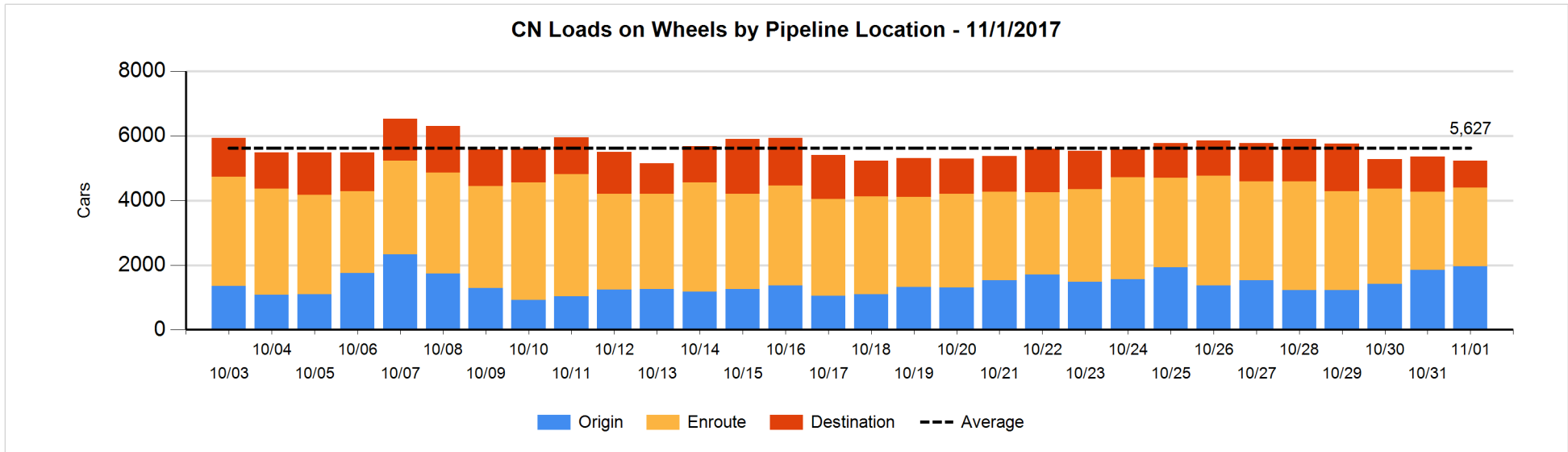


Daily Loads on Wheels By Pipeline Location - 11/1/2017

	E Canada	Prince Rupert	Thunder Bay	USA/MEX	Vancouver	Total
CN						
Origin	35	396	54	163	1,316	1,964
Enroute	112	650	197	302	1,181	2,442
Destination	47	116	177	6	478	824
	194	1,162	428	471	2,975	5,230
CP						
Origin	52		379	50	1,422	1,903
Enroute	53		444	163	1,258	1,918
Destination	11		385	33	538	967
	116		1,208	246	3,218	4,788
US Rail / Short Line						
Origin						
Enroute	4			195		199
Destination				39	29	68
	4			234	29	267

Change in Daily Loads on Wheels By Pipeline Location - Prior 24 Hours

	E Canada	Prince Rupert	Thunder Bay	USA/MEX	Vancouver	Total
CN						
Origin	24	-9	5	98	-4	114
Enroute	-61	56	-122	57	93	23
Destination	28	-205	6	-3	-92	-266
	-9	-158	-111	152	-3	-129
CP						
Origin	30		-160	-3	120	-13
Enroute	2		75	-15	269	331
Destination	0		-50	15	-289	-324
	32		-135	-3	100	-6
US Rail / Short Line						
Origin						
Enroute	1			-29		-28
Destination				-3	1	-2
	1			-32	1	-30

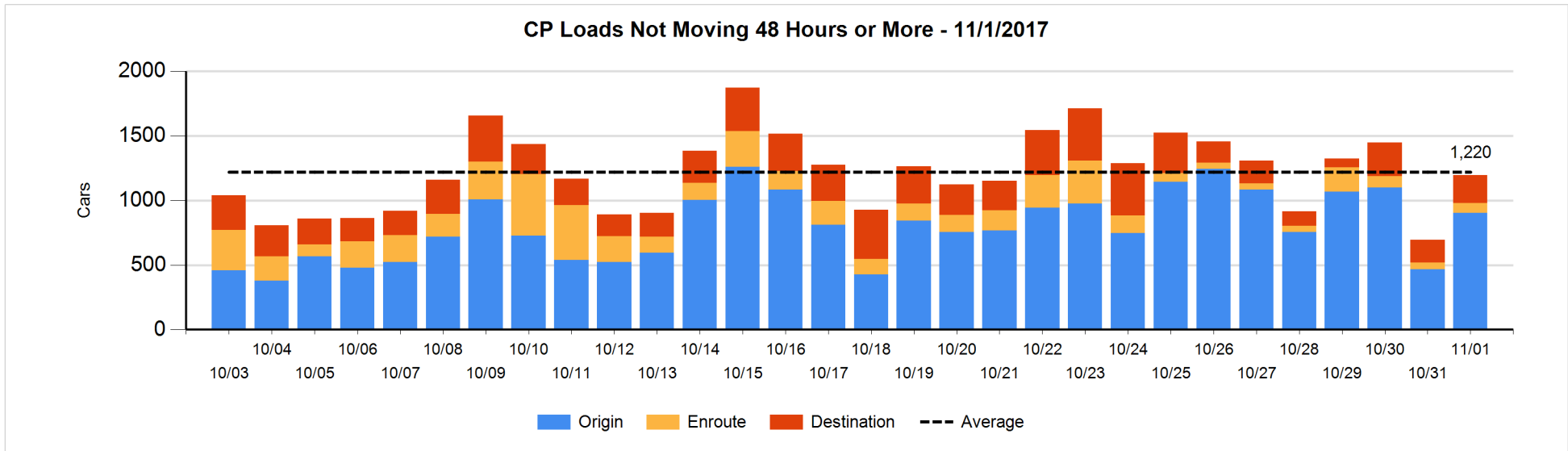
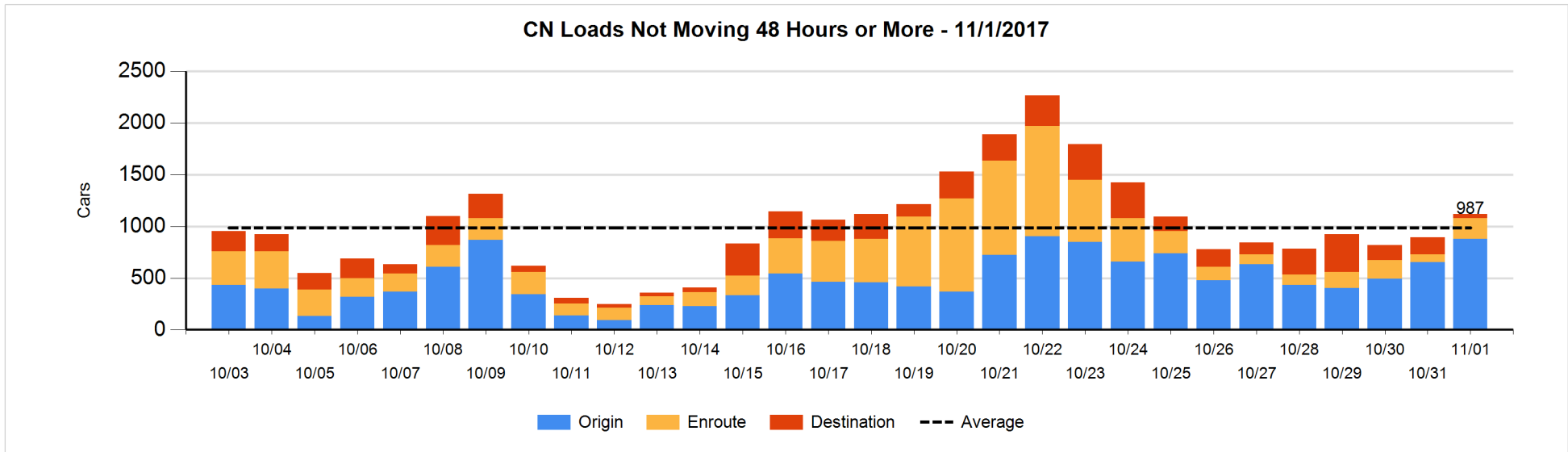


Loads Not Moving 48 Hours or More - 11/1/2017

	E Canada	Prince Rupert	Thunder Bay	USA/MEX	Vancouver	Total
CN						
Origin	8	201		14	655	878
Enroute	10	109	1	76	7	203
Destination	7	20	3	3	5	38
	25	330	4	93	667	1119
CP						
Origin	8		105	50	739	902
Enroute	2		3	56	18	79
Destination	3		58		152	213
	13		166	106	909	1194
US Rail / Short Line						
Origin						
Enroute				85		85
Destination				25	3	28
				110	3	113

Change in Loads Not Moving 48 Hours or More - 11/1/2017

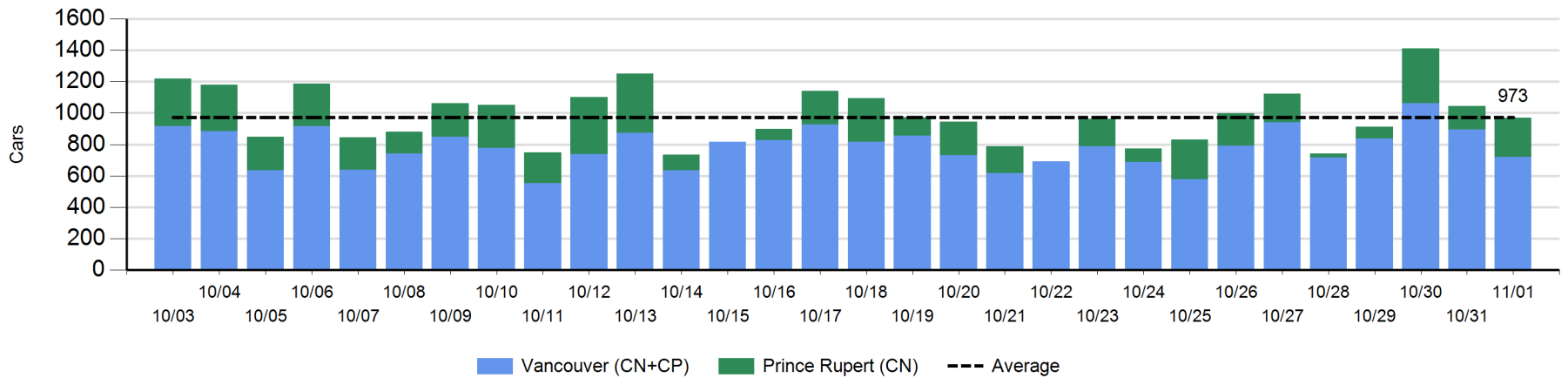
	E Canada	Prince Rupert	Thunder Bay	USA/MEX	Vancouver	Total
CN						
Origin	7	0		6	211	224
Enroute	-10	83	1	74	-21	127
Destination	5	-3	-122	-3	-3	-126
	2	80	-121	77	187	225
CP						
Origin	0		-20	-1	457	436
Enroute	1		0	39	-12	28
Destination	2		45		-11	36
	3		25	38	434	500
US Rail / Short Line						
Origin						
Enroute				3		3
Destination				7	0	7
				10	0	10



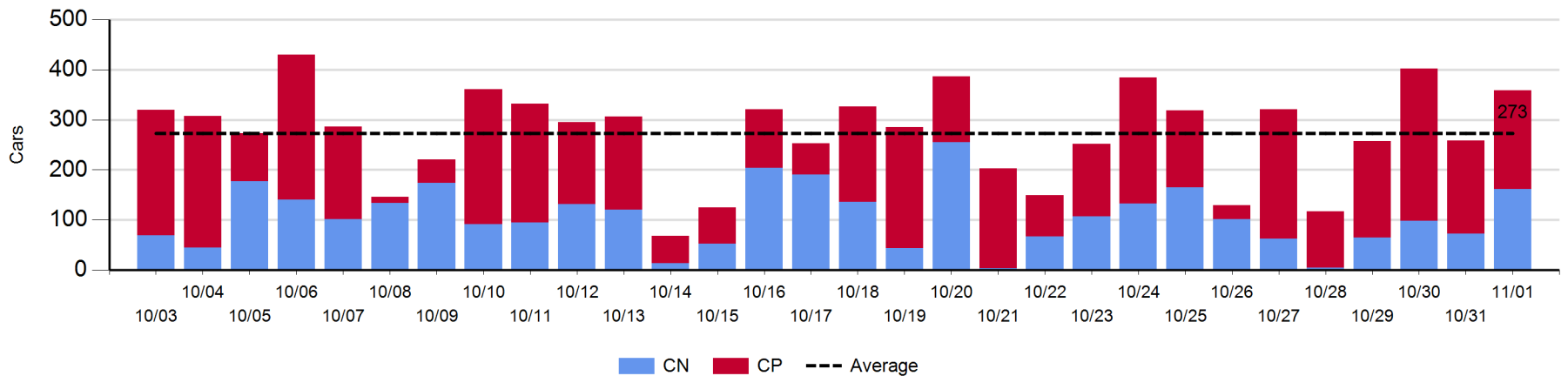
Port Unloads - 11/1/2017

	Prince Rupert	Vancouver	West Coast Total	Thunder Bay	Total
CN	248	380	628	162	790
CP		340	340	197	537
	248	720	968	359	1,327

West Coast Port Unloads - Prior 30 Days



Thunder Bay Port Unloads - Prior 30 Days



Port Terminal Status

Vancouver

Daily Activity for 11/1/2017

	Cars Arrived	Cars Received in Interchange	Cars Delivered in Interchange	Cars Placed for Unloading	Loads on Wheels at Destination As of 11/1/2017
CN	182	113	11	469	478
CP	167		113	249	538
SRY	1	11		12	29

Port Unloads

	11/01	10/31	Week To Date	Last Week
CN	380	476	1,473	2,728
CP	340	420	1,204	2,609
SRY	12	8	29	60

Age Profile of Loaded Cars Waiting Placement for Unloading

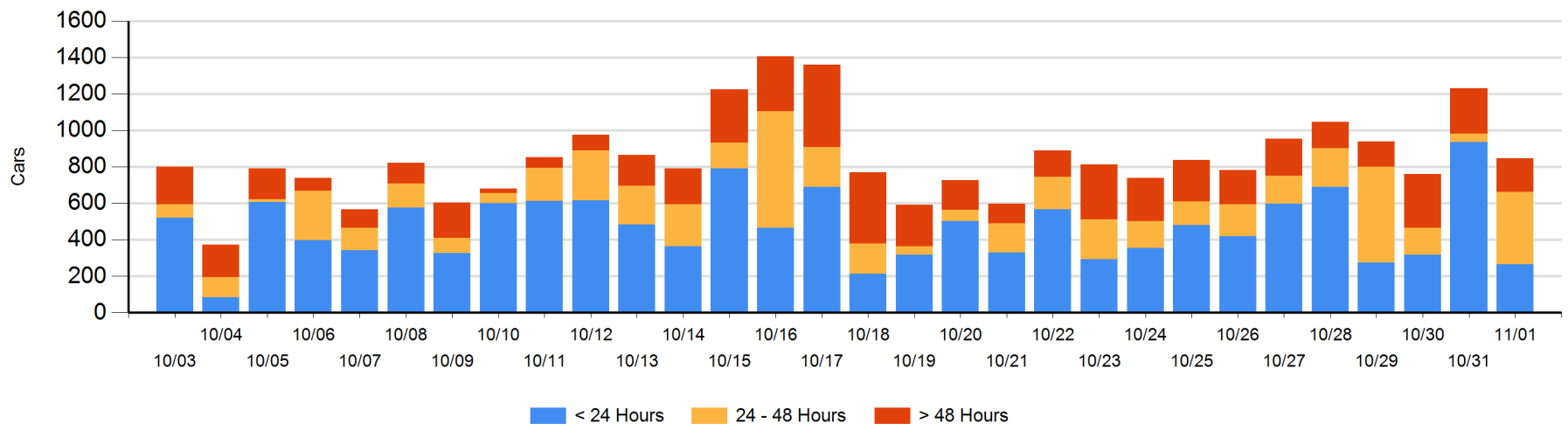
Today

	< 24 Hrs	24 - 48 Hrs	> 48-72 Hrs	> 72 Hrs	Total On Hand
CN	180	176	8	10	374
CP	86	220	7	160	473
SRY					0

Change in Last 24 Hours

	< 24 Hrs	24-48 Hrs	48 - 72 Hrs	> 72 Hrs
CN	-237	168	-12	8
CP	-433	181	-17	-43
SRY				

Loaded Cars on Hand Vancouver Waiting for Placement - Last 30 Days All Railways



Port Terminal Status

Prince Rupert

Daily Activity for 11/1/2017

Cars Arrived	Cars Received in Interchange	Cars Delivered in Interchange	Cars Placed for Unloading	Loads on Wheels at Destination As of 11/1/2017
				116

Port Unloads

	11/01	10/31	Week To Date	Last Week
CN	248	150	748	1,002

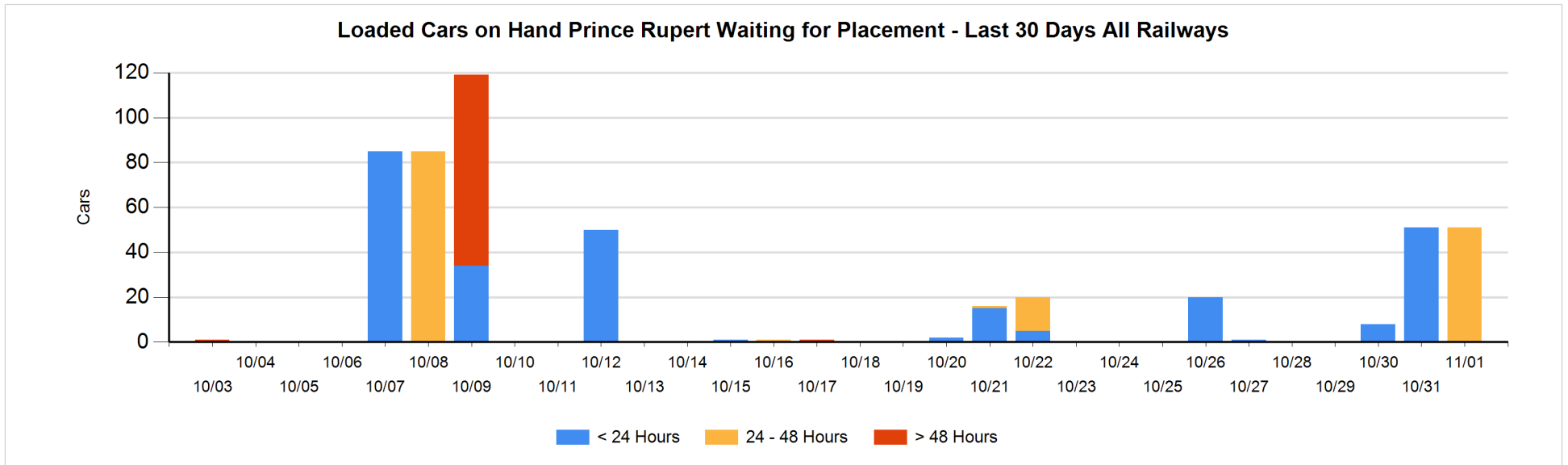
Age Profile of Loaded Cars Waiting Placement for Unloading

Today

	< 24 Hrs	24 - 48 Hrs	> 48-72 Hrs	> 72 Hrs	Total On Hand
CN		51			51

Change in Last 24 Hours

	< 24 Hrs	24-48 Hrs	48 - 72 Hrs	> 72 Hrs
CN	-51	51		



Port Terminal Status

Thunder Bay

Daily Activity for 11/1/2017

	Cars Arrived	Cars Received in Interchange	Cars Delivered in Interchange	Cars Placed for Unloading	Loads on Wheels at Destination As of 11/1/2017
CN	168			280	177
CP	232			143	385

Port Unloads

	11/01	10/31	Week To Date	Last Week
CN	162	72	332	639
CP	197	186	687	1,140

Age Profile of Loaded Cars Waiting Placement for Unloading

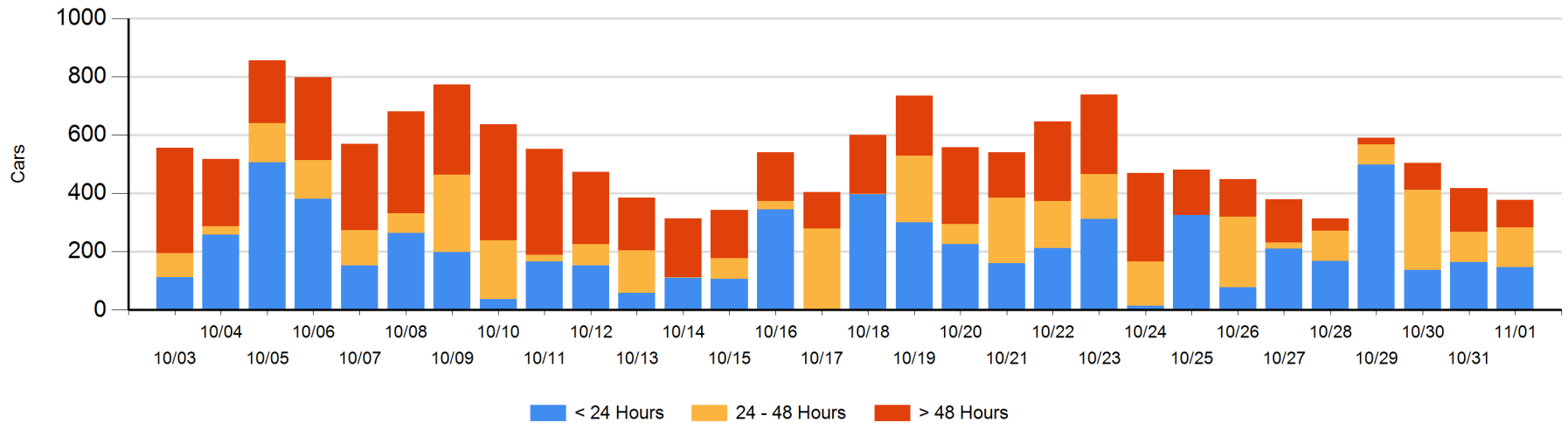
Today

	< 24 Hrs	24 - 48 Hrs	> 48-72 Hrs	> 72 Hrs	Total On Hand
CN		18	27	10	55
CP	147	119	55	2	323

Change in Last 24 Hours

	< 24 Hrs	24-48 Hrs	48 - 72 Hrs	> 72 Hrs
CN	-18	-9	-95	10
CP	0	44	45	-17

Loaded Cars on Hand Thunder Bay Waiting for Placement - Last 30 Days All Railways



Measurement Definitions

Loads on Wheels	<p>Count of loaded rail cars including all rail cars that have been released loaded at origin and have not been reported by the railway as unloaded at destination.</p> <p>Counts include all rail cars (hopper cars and boxcars) moving within a pipeline.</p>
Loads Not Moving	<p>Loaded rail cars for which the railways have not reported a movement event for 48 hours or more whether the rail car is at origin, enroute or at destination.</p>
Port Unloads	<p>Count of rail cars reported by railways as unloaded at the western port destinations of Vancouver, Prince Rupert and Thunder Bay.</p> <p>Unload counts include all rail cars (hopper cars and boxcars) unloaded by all receivers including major port terminals, transloaders and other receivers.</p>
Cars Arrived	<p>Count of rail cars reported as arrived at the destination railway terminal.</p>
Cars Received in Interchange	<p>Count of rail cars received in interchange by each railway within a destination railway terminal. Interchange activity is tracked for the Vancouver and Thunder Bay pipelines as applicable.</p>
Cars Delivered in Interchange	<p>Count of rail cars delivered in interchange by each railway within a destination railway terminal. Interchange activity is tracked for the Vancouver and Thunder Bay pipelines as applicable.</p>
Cars Placed for Unloading	<p>Count of rail cars reported by the railways as placed loaded at the receiver's facility for unloading.</p>
Loads on Wheels at Destination	<p>Count of rail cars that remain under load within the destination railway terminal including rail cars that have been reported as placed for unloading but not yet reported as unloaded.</p>
Waiting Placement for Unloading	<p>Count of rail cars that have been reported as arrived at the destination railway terminal but not reported as placed for unloading by the railway.</p> <p>For the Ports of Vancouver, Prince Rupert and Thunder Bay the count of rail cars waiting placement for unloading is categorized by age – i.e. the elapsed time from arrival at destination to the current report date.</p>