

### Loads on Wheels

- System wide loads on wheels increased in the prior 24 hours and now sit at 10,427 - 3% below the trailing 30 day average
- In total loads on wheels increased by 306 cars reflecting a nominal decline in CN cars (-20) and an increase in CP volumes (-237)
- CN loads on wheels were lower in all corridors other than Prince Rupert (+145) and Thunder Bay (+30). CP volumes increased in the US (142) and Vancouver (203) corridors offset by a decline in the Thunder Bay corridor.
- Vancouver now at 6,071, Prince Rupert at 1,565 and Thunder Bay at 1,429

### Loads Not Moving

- The count of loaded cars not moving for 48 hours decreased by 106 cars; total cars on CN and CP not moving for 48 hours or more now at 2,013
- The majority of cars continue to dwell at origin for both railways
- CN
  - The count of cars not moving changed only nominally on a net basis - loads on wheels now idle for 48 hours or more at 1,146
  - Counts increased in the Vancouver (60), Thunder Bay (97) and Eastern Canada (35) corridors offset by declines in other corridors - primarily Prince Rupert
  - More than 70% of cars are dwelling at origin locations
- CP
  - CP counts decreased by 101 cars in total - with all corridors improving nominally other than Eastern Canada - CP loads on wheels not moving now at 867
  - More than 80% of cars dwelling at origin with more than 550 destined to Vancouver

### Port Performance

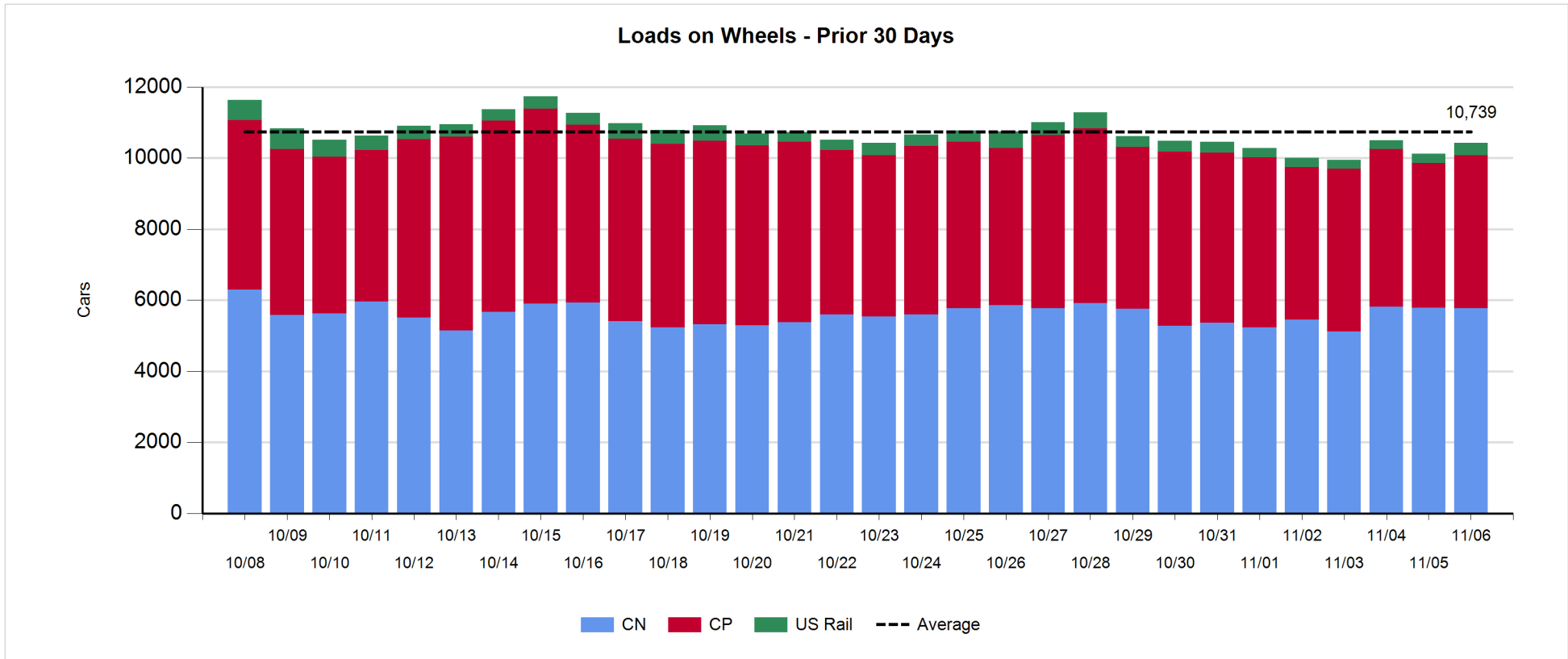
- CN and CP unloaded a total of 1,114 at the three western ports
- Vancouver
  - Total of 859 cars reported unloaded by CN and CP at the Port of Vancouver; CN - 567 and CP - 292
  - There are currently 678 cars at Vancouver waiting placement for unloading split roughly equally between CN and CP
- Thunder Bay
  - 381 unloads at Thunder Bay
  - Cars at Thunder Bay waiting placement now at 483 - all CP.

**Daily Loads on Wheels - 11/6/2017**

	E Canada	Prince Rupert	Thunder Bay	USA/MEX	Vancouver	Total
CN	179	1,565	423	364	3,233	5,764
CP	124		1,006	391	2,793	4,314
Short Line	2				45	47
US Rail				302		302
	305	1,565	1,429	1,057	6,071	10,427

**Change in Loads on Wheels - Prior 24 Hours**

	E Canada	Prince Rupert	Thunder Bay	USA/MEX	Vancouver	Total
CN	-10	145	30	-61	-124	-20
CP	-12		-96	142	203	237
Short Line	-8				34	26
US Rail				63		63
	-30	145	-66	144	113	306

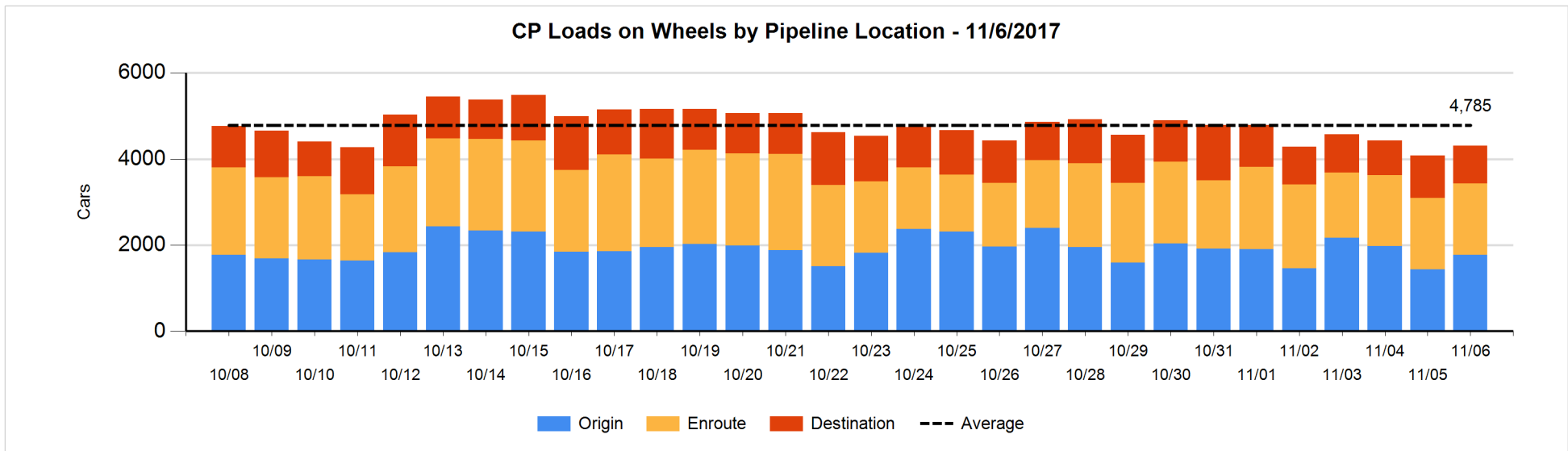
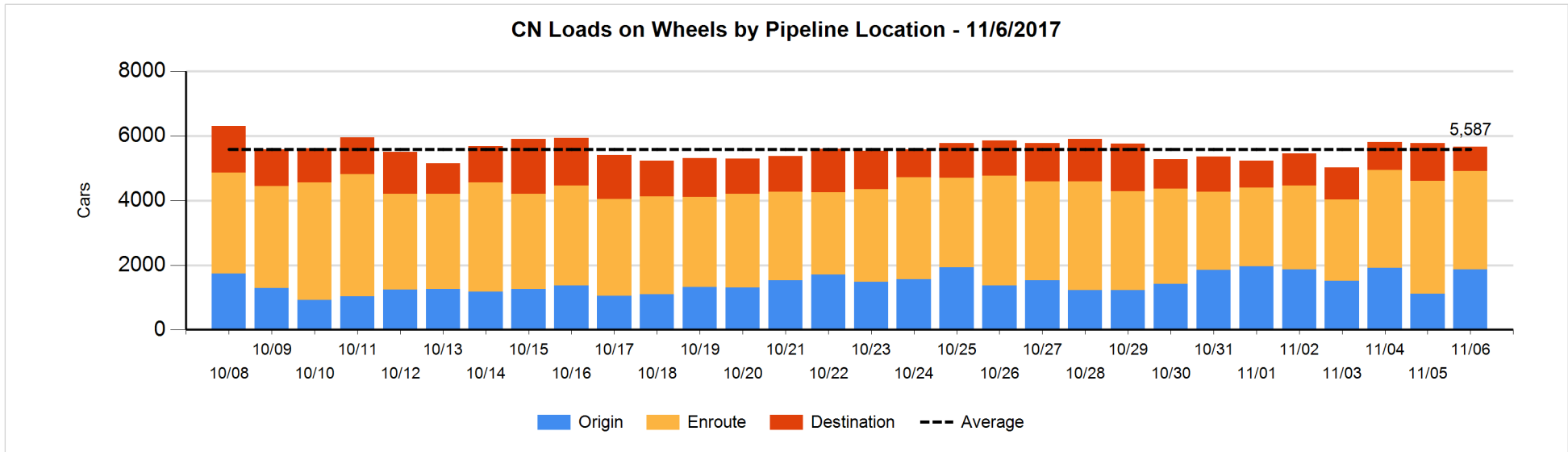


**Daily Loads on Wheels By Pipeline Location - 11/6/2017**

	E Canada	Prince Rupert	Thunder Bay	USA/MEX	Vancouver	Total
CN						
Origin	9	751	98	12	1,002	1,872
Enroute	123	737	289	318	1,575	3,042
Destination	47	77	36	34	551	745
	179	1,565	423	364	3,128	5,659
CP						
Origin	51		165	266	1,287	1,769
Enroute	72		351	102	1,131	1,656
Destination	1		490	23	374	888
	124		1,006	391	2,792	4,313
US Rail / Short Line						
Origin						
Enroute				217		217
Destination	2			85	45	132
	2			302	45	349

**Change in Daily Loads on Wheels By Pipeline Location - Prior 24 Hours**

	E Canada	Prince Rupert	Thunder Bay	USA/MEX	Vancouver	Total
CN						
Origin	3	359	97	1	294	754
Enroute	9	-2	0	-94	-364	-451
Destination	-22	-212	-67	32	-159	-428
	-10	145	30	-61	-229	-125
CP						
Origin	0		107	214	12	333
Enroute	-11		-240	-42	290	-3
Destination	-1		37	-30	-99	-93
	-12		-96	142	203	237
US Rail / Short Line						
Origin						
Enroute				32		32
Destination	-8			31	34	57
	-8			63	34	89

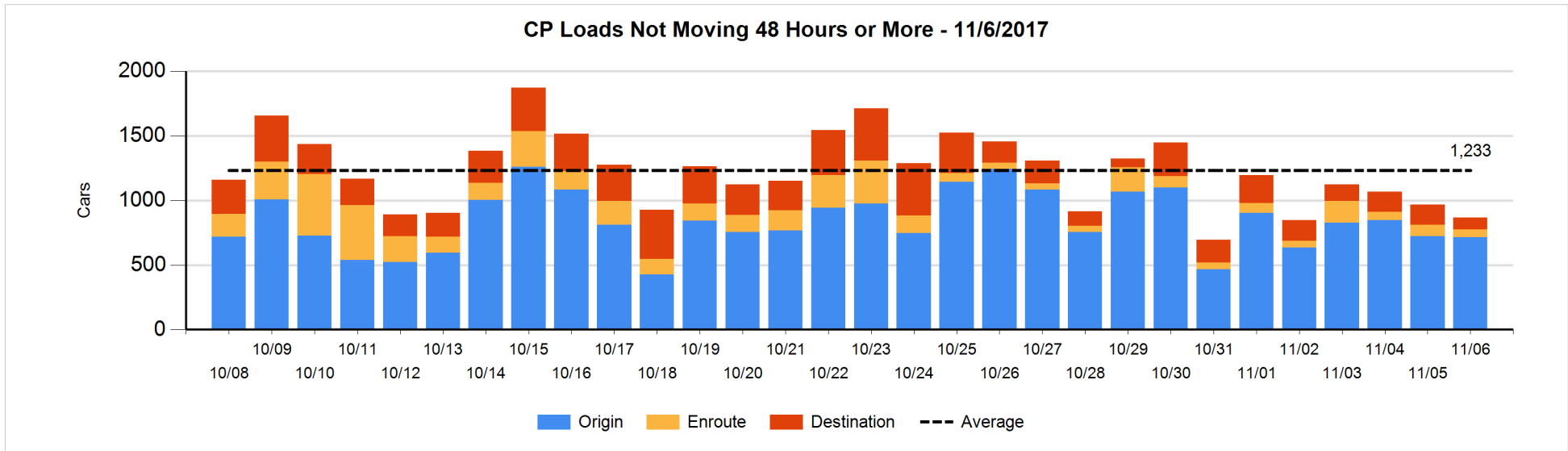
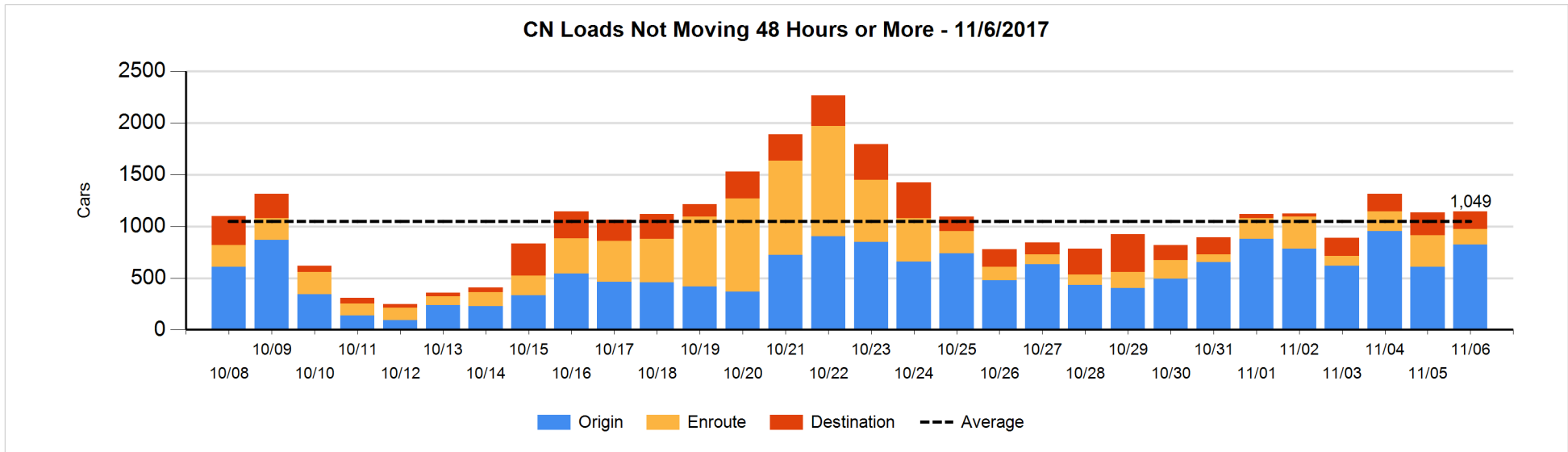


**Loads Not Moving 48 Hours or More - 11/6/2017**

	E Canada	Prince Rupert	Thunder Bay	USA/MEX	Vancouver	Total
CN						
Origin	6	255	98	8	454	821
Enroute	15	11	1	89	37	153
Destination	32	14	2		124	172
	53	280	101	97	615	1146
CP						
Origin	51		56	52	555	714
Enroute	4		2	18	37	61
Destination	1		29	6	56	92
	56		87	76	648	867
US Rail / Short Line						
Origin						
Enroute				79		79
Destination	1			7	1	9
	1			86	1	88

**Change in Loads Not Moving 48 Hours or More - 11/6/2017**

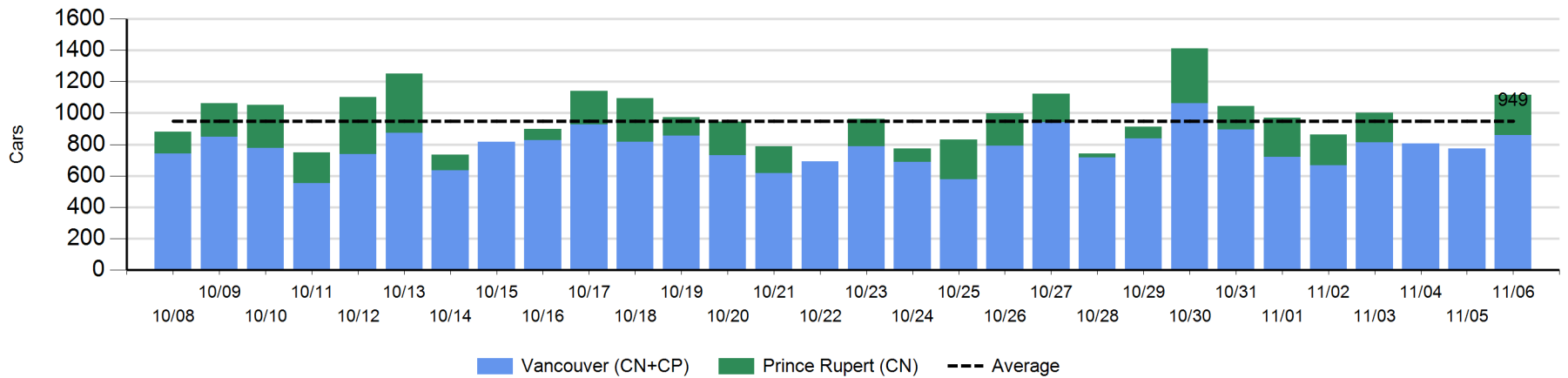
	E Canada	Prince Rupert	Thunder Bay	USA/MEX	Vancouver	Total
CN						
Origin	2	1	97	-3	115	212
Enroute	7	-67	0	-35	-59	-154
Destination	26	-72	0	-2	4	-44
	35	-138	97	-40	60	14
CP						
Origin	46		-2	52	-106	-10
Enroute	-10		-1	-26	10	-27
Destination	1		-18	-47	0	-64
	37		-21	-21	-96	-101
US Rail / Short Line						
Origin						
Enroute				-7		-7
Destination	0			-6	-6	-12
	0			-13	-6	-19



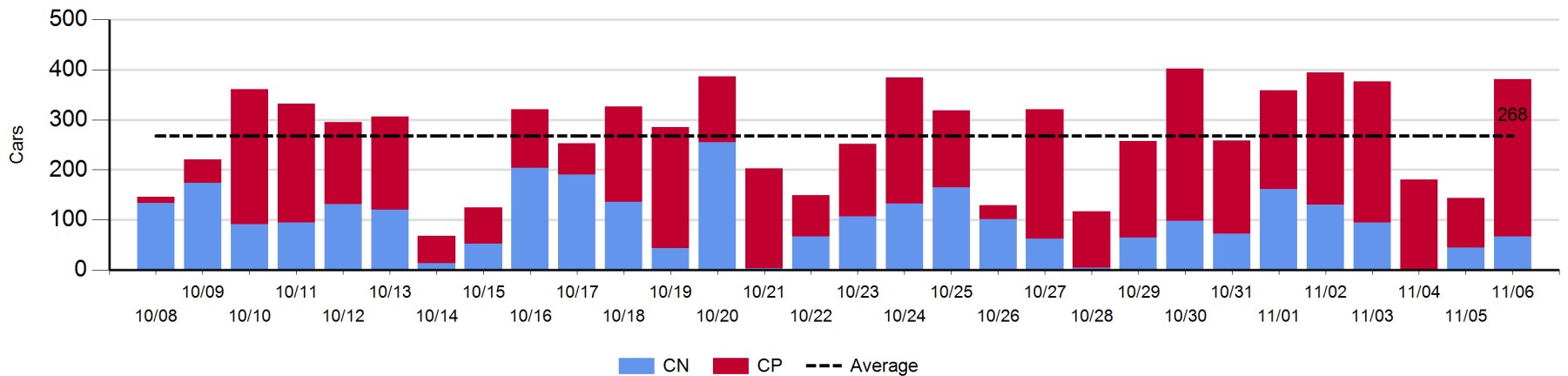
**Port Unloads - 11/6/2017**

	Prince Rupert	Vancouver	West Coast Total	Thunder Bay	Total
CN	255	567	822	67	889
CP		292	292	314	606
	255	859	1,114	381	1,495

**West Coast Port Unloads - Prior 30 Days**



**Thunder Bay Port Unloads - Prior 30 Days**



**Port Terminal Status**

**Vancouver**

Daily Activity for 11/6/2017

	Cars Arrived	Cars Received in Interchange	Cars Delivered in Interchange	Cars Placed for Unloading	Loads on Wheels at Destination As of 11/6/2017
CN	366	205	164	347	551
CP	275	161	237	260	374
SRY	1	35		5	45

**Port Unloads**

	11/06	11/05	Week To Date	Last Week
CN	567	408	567	3,040
CP	292	364	292	2,691
SRY	9		9	52

**Age Profile of Loaded Cars Waiting Placement for Unloading**

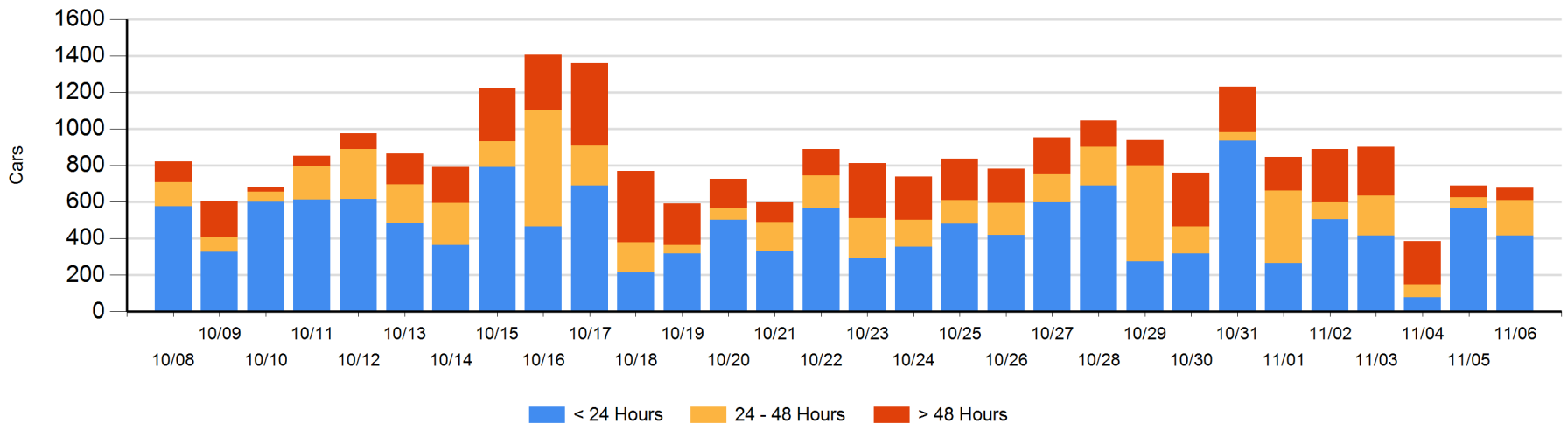
**Today**

	< 24 Hrs	24 - 48 Hrs	> 48-72 Hrs	> 72 Hrs	Total On Hand
CN	242	110		4	356
CP	174	83	7	58	322
SRY					0

**Change in Last 24 Hours**

	< 24 Hrs	24-48 Hrs	48 - 72 Hrs	> 72 Hrs
CN	35	110		-1
CP	-186	24	5	0
SRY				

**Loaded Cars on Hand Vancouver Waiting for Placement - Last 30 Days All Railways**





**Port Terminal Status**

**Prince Rupert**

Daily Activity for 11/6/2017

	Cars Arrived	Cars Received in Interchange	Cars Delivered in Interchange	Cars Placed for Unloading	Loads on Wheels at Destination As of 11/6/2017
CN	44			40	77

**Port Unloads**

	11/06	11/05	Week To Date	Last Week
CN	255		255	1,134

**Age Profile of Loaded Cars Waiting Placement for Unloading**

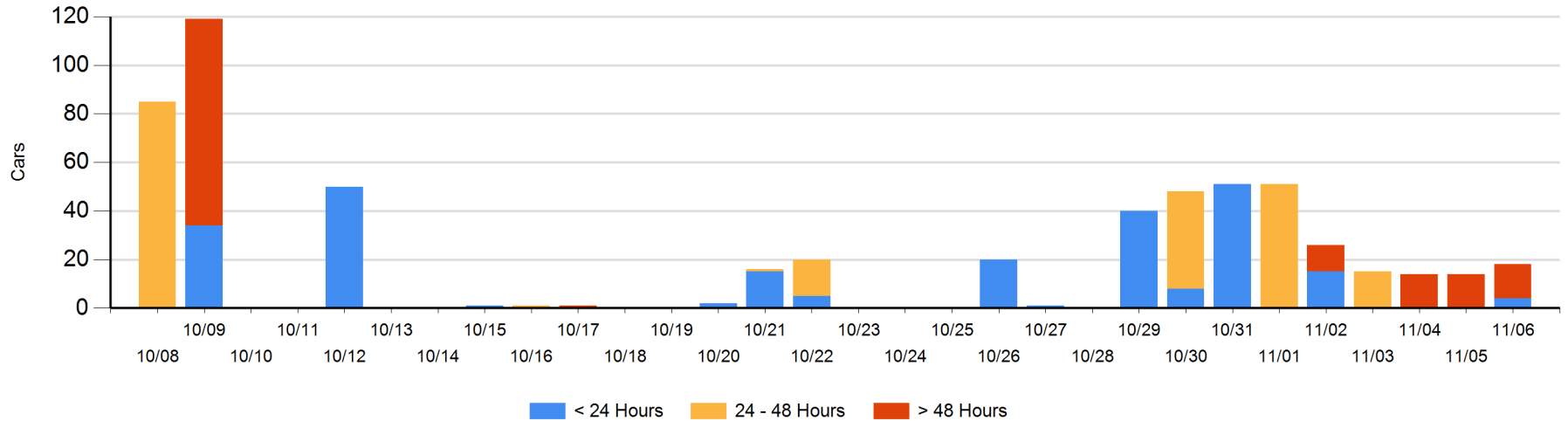
**Today**

	< 24 Hrs	24 - 48 Hrs	> 48-72 Hrs	> 72 Hrs	Total On Hand
CN	4			14	18

**Change in Last 24 Hours**

	< 24 Hrs	24-48 Hrs	48 - 72 Hrs	> 72 Hrs
CN	4			0

Loaded Cars on Hand Prince Rupert Waiting for Placement - Last 30 Days All Railways



**Port Terminal Status**

**Thunder Bay**

Daily Activity for 11/6/2017

	Cars Arrived	Cars Received in Interchange	Cars Delivered in Interchange	Cars Placed for Unloading	Loads on Wheels at Destination As of 11/6/2017
CN				36	36
CP	242			141	490

**Port Unloads**

	11/06	11/05	Week To Date	Last Week
CN	67	45	67	602
CP	314	99	314	1,512

**Age Profile of Loaded Cars Waiting Placement for Unloading**

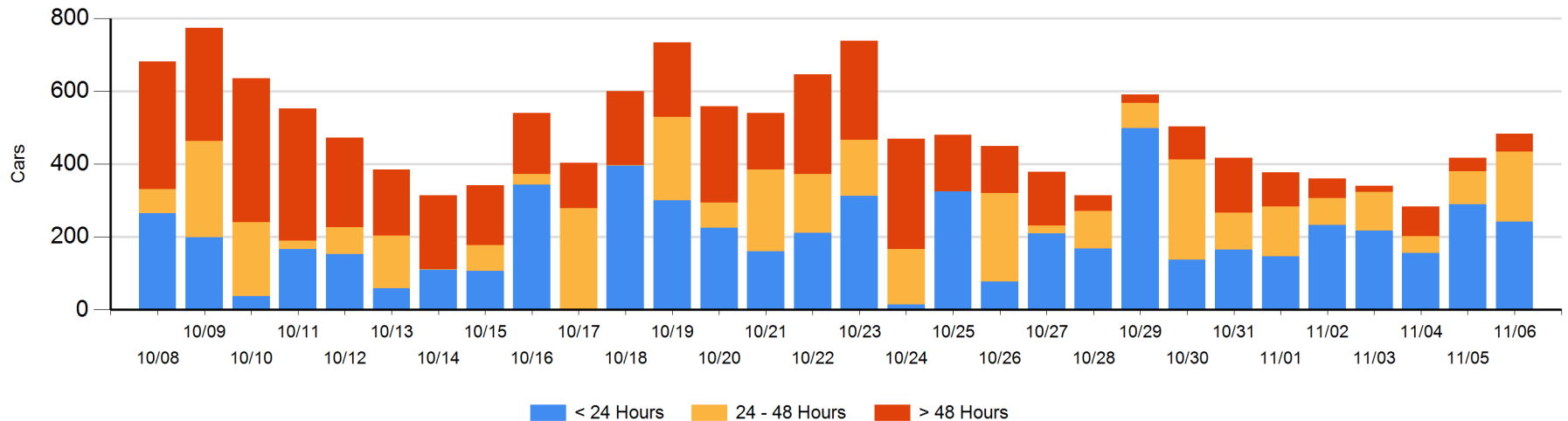
**Today**

	< 24 Hrs	24 - 48 Hrs	> 48-72 Hrs	> 72 Hrs	Total On Hand
CN					0
CP	242	192	27	22	483

**Change in Last 24 Hours**

	< 24 Hrs	24-48 Hrs	48 - 72 Hrs	> 72 Hrs
CN	-35			
CP	-13	101	5	8

**Loaded Cars on Hand Thunder Bay Waiting for Placement - Last 30 Days All Railways**



## Measurement Definitions

Loads on Wheels	<p>Count of loaded rail cars including all rail cars that have been released loaded at origin and have not been reported by the railway as unloaded at destination.</p> <p>Counts include all rail cars (hopper cars and boxcars) moving within a pipeline.</p>
Loads Not Moving	<p>Loaded rail cars for which the railways have not reported a movement event for 48 hours or more whether the rail car is at origin, enroute or at destination.</p>
Port Unloads	<p>Count of rail cars reported by railways as unloaded at the western port destinations of Vancouver, Prince Rupert and Thunder Bay.</p> <p>Unload counts include all rail cars (hopper cars and boxcars) unloaded by all receivers including major port terminals, transloaders and other receivers.</p>
Cars Arrived	<p>Count of rail cars reported as arrived at the destination railway terminal.</p>
Cars Received in Interchange	<p>Count of rail cars received in interchange by each railway within a destination railway terminal. Interchange activity is tracked for the Vancouver and Thunder Bay pipelines as applicable.</p>
Cars Delivered in Interchange	<p>Count of rail cars delivered in interchange by each railway within a destination railway terminal. Interchange activity is tracked for the Vancouver and Thunder Bay pipelines as applicable.</p>
Cars Placed for Unloading	<p>Count of rail cars reported by the railways as placed loaded at the receiver's facility for unloading.</p>
Loads on Wheels at Destination	<p>Count of rail cars that remain under load within the destination railway terminal including rail cars that have been reported as placed for unloading but not yet reported as unloaded.</p>
Waiting Placement for Unloading	<p>Count of rail cars that have been reported as arrived at the destination railway terminal but not reported as placed for unloading by the railway.</p> <p>For the Ports of Vancouver, Prince Rupert and Thunder Bay the count of rail cars waiting placement for unloading is categorized by age – i.e. the elapsed time from arrival at destination to the current report date.</p>