

Loads on Wheels

- System wide loads on wheels declined for the fifth consecutive day - loads on wheels now at 10,183 - 6% below the trailing 30 day average
- Loads on wheels declined by a total of 712 cars reflecting declines in both CN (-236) and CP(-540) volumes.
- CN volumes declined in 4 of 5 corridors led by the Vancouver (-226), Prince Rupert (-112) and Thunder Bay (-73) corridors offset by an increase in E Canada destined traffic. System wide CN loads on wheels are now at 4,954 - the lowest level in the prior 18 days and 8% below the trailing 30 day average.
- CP volumes declined in all corridors led by the Vancouver (-277) and US (-152) corridors. CP system wide loads on wheels are now at 4,838 - the lowest level in the prior 3 weeks and 8% below the trailing 30 day average.
- Vancouver now at 5,594 - dropping below the 6,000 car threshold for the first time in 3 weeks - Prince Rupert at 1,463 and Thunder Bay at 233. Traffic destined to E Canada (+46%) and US (+30%) destinations continue to outpace the trailing 30 day averages.

Loads Not Moving

- The count of loaded cars not moving on CN and CP for 48 hours or more declined nominally in the prior 24 hours (-24) reflecting an increase in CN counts and a decline in CP counts - total cars on CN and CP not moving for 48 hours now at 2,370.
- CN
 - The count of cars not moving increased by 200 cars on a net basis in the prior 24 hours reflecting increases in the Vancouver and Prince Rupert corridors - loads on wheels now idle for 48 hours or more at 932.
 - Idle cars are distributed across all corridors with Vancouver (350) accounting for 37% of all cars.
- CP
 - CP counts declined by 224 cars in the prior 24 hours reflecting a significant decline in the E Canada corridor (-329) offset by an increase in Vancouver (+172) destined traffic - loads on wheels now idle for 48 hours or more now at 1,438 with 50% of cars sitting at origin locations
 - Vancouver continues to account for the majority of idle cars (70%) with the balance in the E Canada and US corridors.

Port Performance

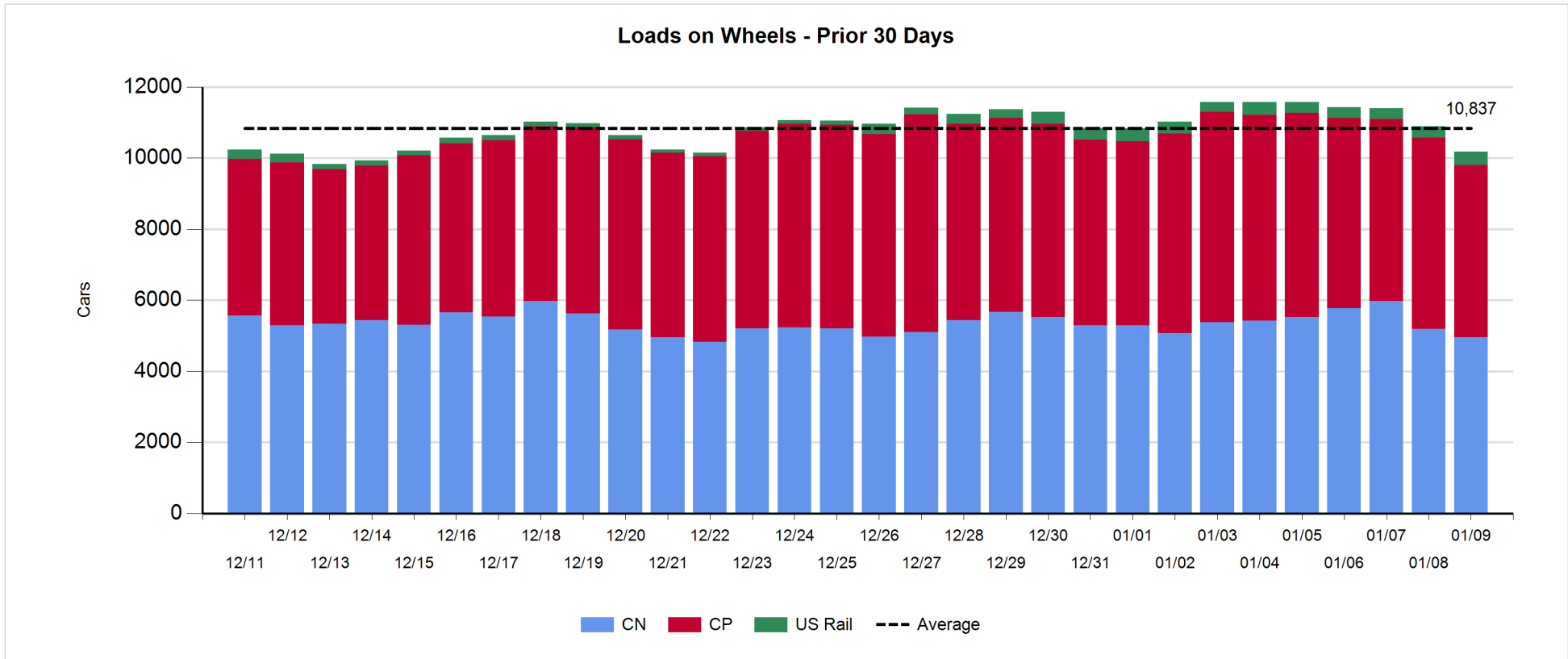
- CN and CP reported a total of 1,248 cars unloaded at the three western ports - through the first two days of week 24 unloads are running at nearly double last week's pace influenced to some degree by the low level of unloads last Monday (January 1).
- Vancouver
 - Total of 928 cars reported unloaded by CN and CP at the Port of Vancouver; CN - 406 and CP - 522.
 - There are currently 1,475 cars on hand at Vancouver waiting placement for unloading - 315 of which arrived at Vancouver more than 72 hours ago.
- Thunder Bay
 - Total of 99 cars reported unloaded by CN and CP in the prior 24 hours.
 - Cars at Thunder Bay waiting placement now at 79.

Daily Loads on Wheels - 1/9/2018

	E Canada	Prince Rupert	Thunder Bay	USA/MEX	Vancouver	Total
CN	683	1,463	225	412	2,171	4,954
CP	750		8	694	3,386	4,838
Short Line	37				37	74
US Rail				317		317
	1,470	1,463	233	1,423	5,594	10,183

Change in Loads on Wheels - Prior 24 Hours

	E Canada	Prince Rupert	Thunder Bay	USA/MEX	Vancouver	Total
CN	198	-112	-73	-23	-226	-236
CP	-85		-26	-152	-277	-540
Short Line	6				5	11
US Rail				53		53
	119	-112	-99	-122	-498	-712

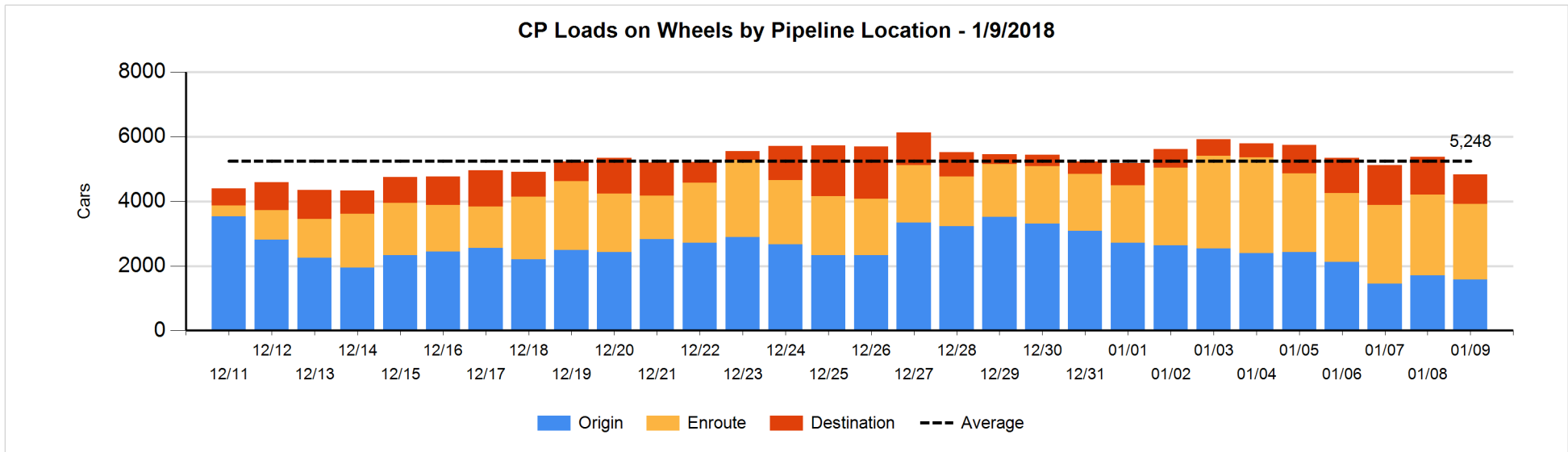
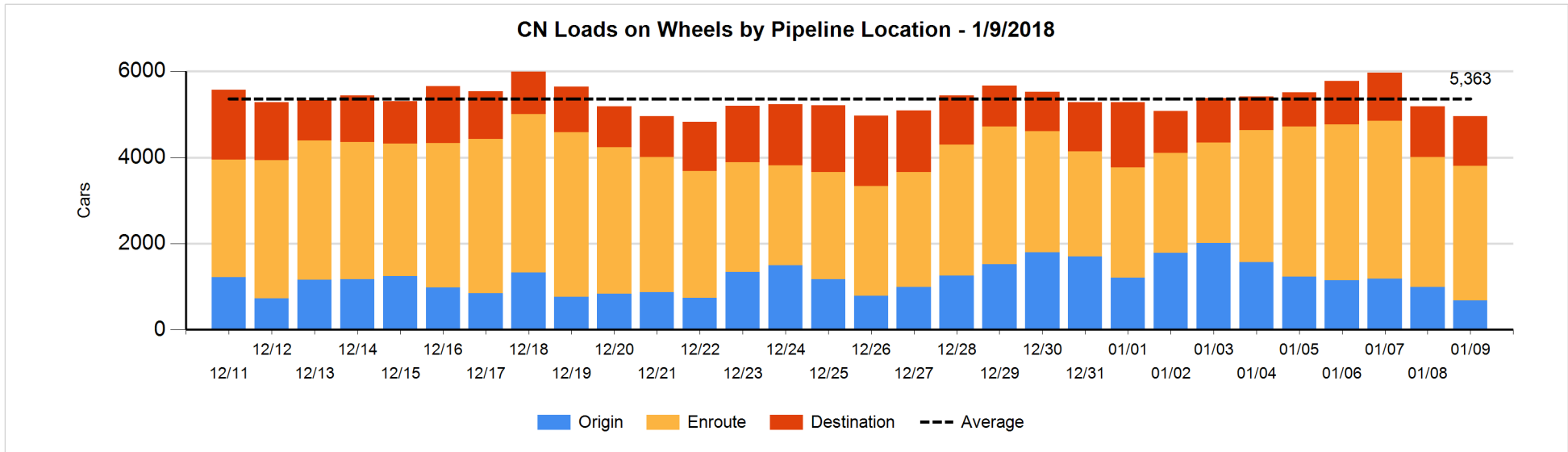


Daily Loads on Wheels By Pipeline Location - 1/9/2018

	E Canada	Prince Rupert	Thunder Bay	USA/MEX	Vancouver	Total
CN						
Origin	26	361		86	203	676
Enroute	586	815	137	296	1,292	3,126
Destination	71	287	88	30	676	1,152
	683	1,463	225	412	2,171	4,954
CP						
Origin	187			204	1,184	1,575
Enroute	563		2	456	1,320	2,341
Destination			6	34	882	922
	750		8	694	3,386	4,838
US Rail / Short Line						
Origin	6					6
Enroute	26			194		220
Destination	5			123	37	165
	37			317	37	391

Change in Daily Loads on Wheels By Pipeline Location - Prior 24 Hours

	E Canada	Prince Rupert	Thunder Bay	USA/MEX	Vancouver	Total
CN						
Origin	0	-117		-15	-185	-317
Enroute	199	-16	0	-3	-63	117
Destination	-1	21	-73	-5	22	-36
	198	-112	-73	-23	-226	-236
CP						
Origin	-83			1	-53	-135
Enroute	-2		-2	-126	-29	-159
Destination			-24	-27	-195	-246
	-85		-26	-152	-277	-540
US Rail / Short Line						
Origin	6					6
Enroute	0			78		78
Destination	0			-25	5	-20
	6			53	5	64

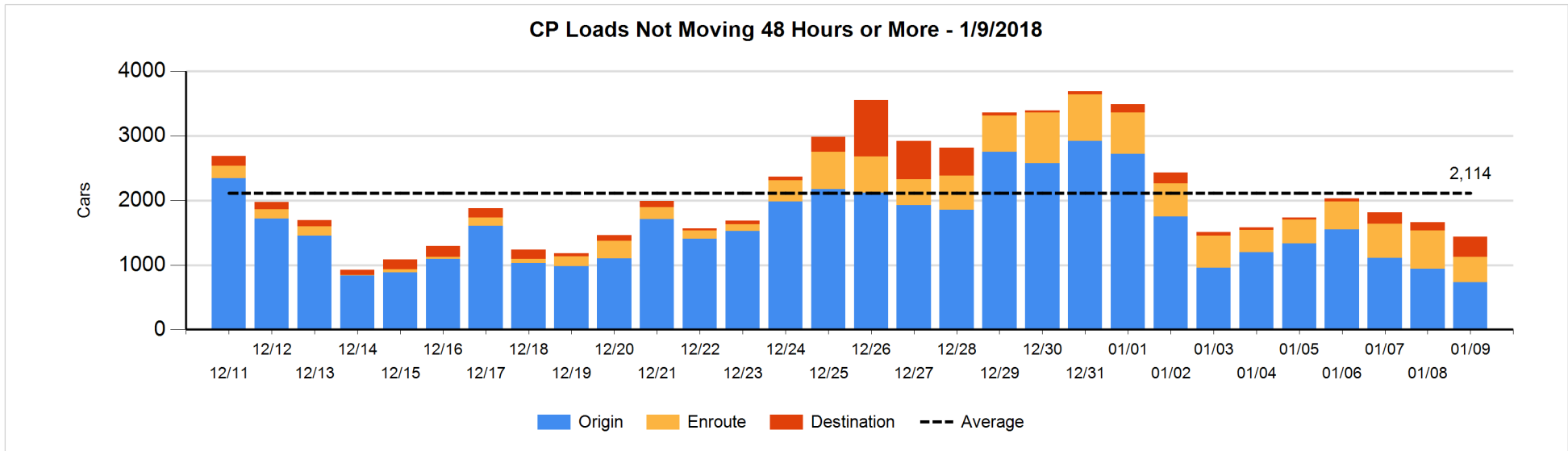
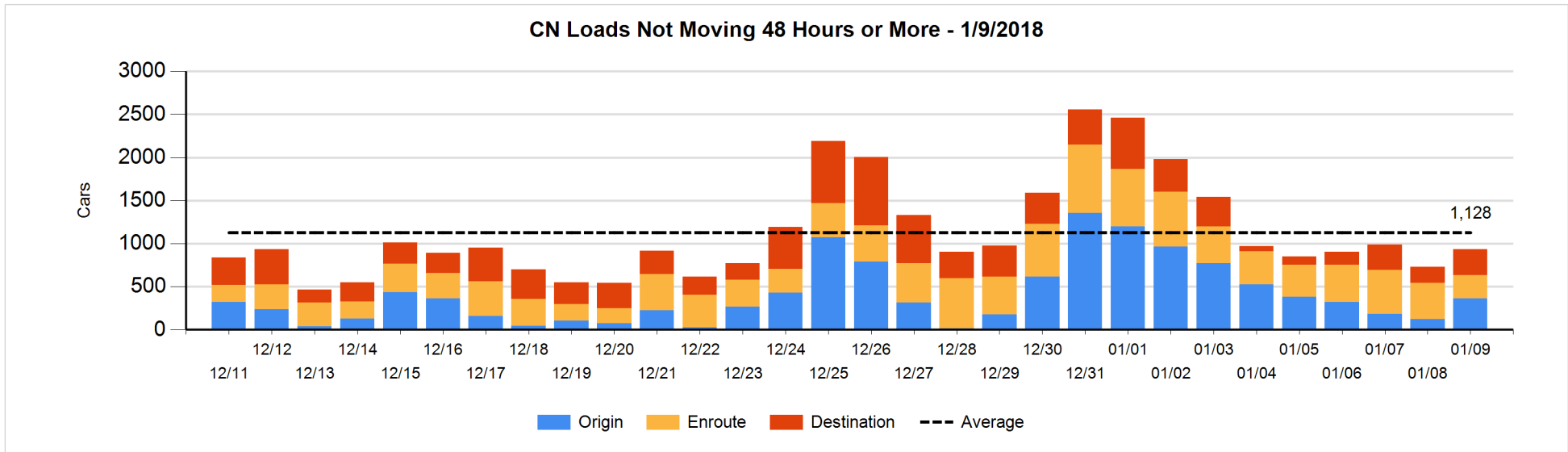


Loads Not Moving 48 Hours or More - 1/9/2018

	E Canada	Prince Rupert	Thunder Bay	USA/MEX	Vancouver	Total
CN						
Origin	26	190		51	98	365
Enroute	137	3	33	19	75	267
Destination	27	8	88		177	300
	190	201	121	70	350	932
CP						
Origin	111			126	498	735
Enroute	80		2	110	200	392
Destination			4		307	311
	191		6	236	1005	1438
US Rail / Short Line						
Origin						
Enroute				28		28
Destination	1			21	13	35
	1			49	13	63

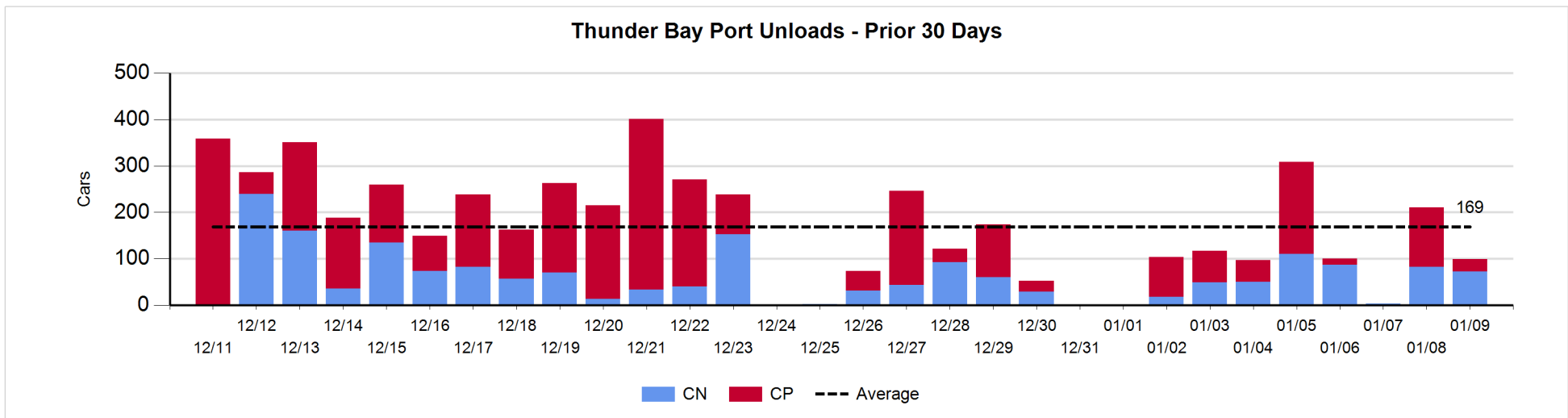
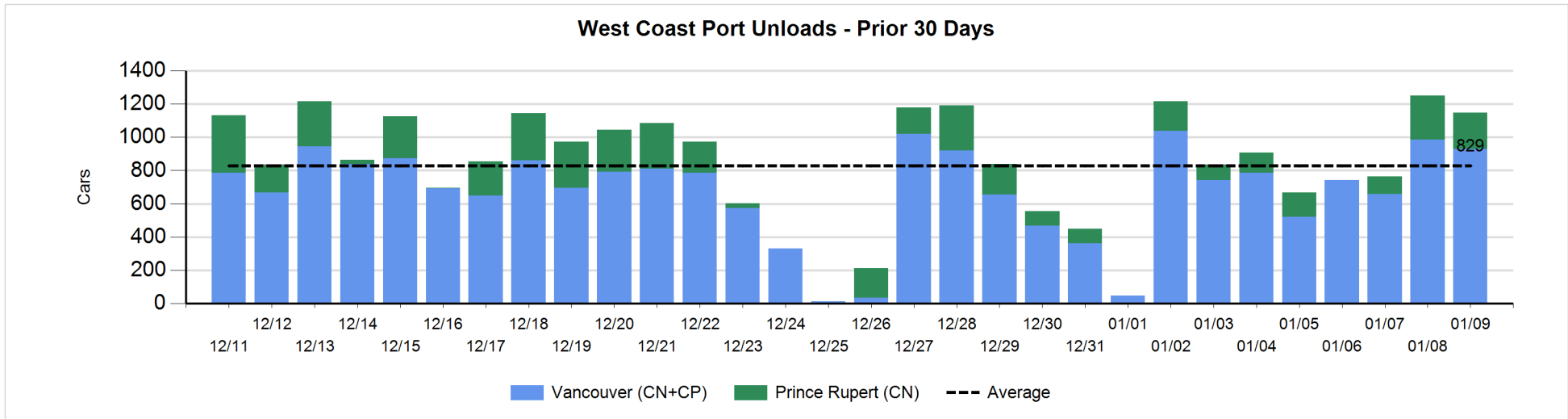
Change in Loads Not Moving 48 Hours or More - 1/9/2018

	E Canada	Prince Rupert	Thunder Bay	USA/MEX	Vancouver	Total
CN						
Origin	0	182		1	62	245
Enroute	-105	0	0	-67	16	-156
Destination	14	7	69	-2	23	111
	-91	189	69	-68	101	200
CP						
Origin	-112			0	-92	-204
Enroute	-217		0	-48	64	-201
Destination			-15	-4	200	181
	-329		-15	-52	172	-224
US Rail / Short Line						
Origin						
Enroute	-26			-1		-27
Destination	0			-20	-2	-22
	-26			-21	-2	-49



Port Unloads - 1/9/2018

	Prince Rupert	Vancouver	West Coast Total	Thunder Bay	Total
CN	221	406	627	73	700
CP		522	522	26	548
	221	928	1,149	99	1,248



Port Terminal Status

Vancouver

Daily Activity for 1/9/2018

	Cars Arrived	Cars Received in Interchange	Cars Delivered in Interchange	Cars Placed for Unloading	Loads on Wheels at Destination As of 1/9/2018
CN	264	114	114	376	676
CP	465	106	128	458	882
SRY		22		13	37

Port Unloads

	01/09	01/08	Week To Date	Last Week
CN	406	584	990	2,303
CP	522	402	924	2,235
SRY	12	20	32	33

Age Profile of Loaded Cars Waiting Placement for Unloading

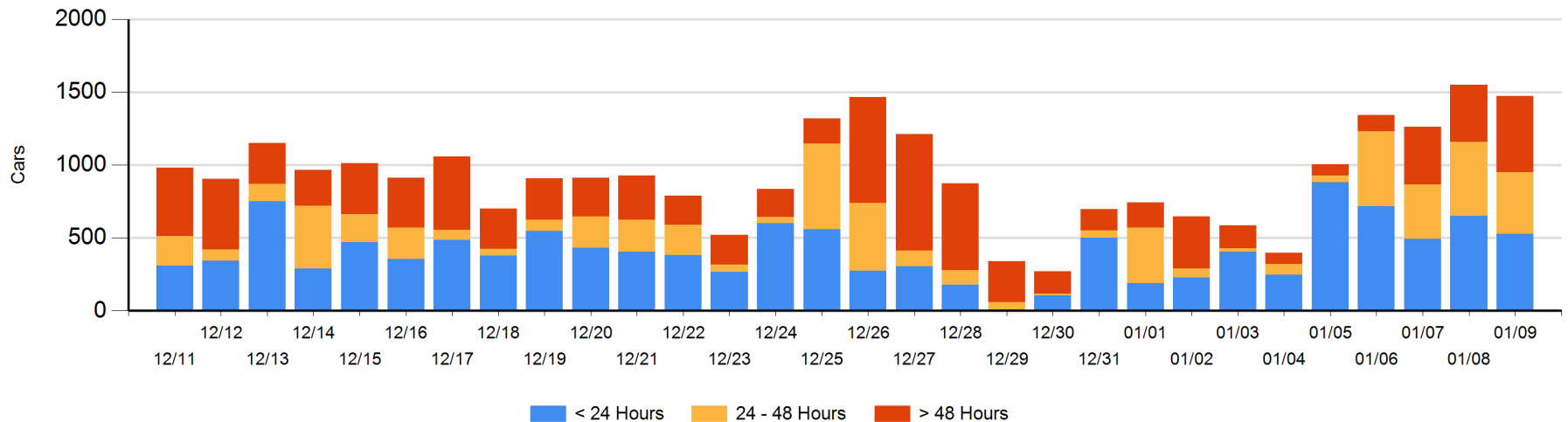
Today

	< 24 Hrs	24 - 48 Hrs	> 48-72 Hrs	> 72 Hrs	Total On Hand
CN	165	228	80	96	569
CP	364	194	129	219	906
SRY					0

Change in Last 24 Hours

	< 24 Hrs	24-48 Hrs	48 - 72 Hrs	> 72 Hrs
CN	-170	-36	60	-6
CP	47	-48	-30	108
SRY				

Loaded Cars on Hand Vancouver Waiting for Placement - Last 30 Days All Railways



Port Terminal Status

Prince Rupert

Daily Activity for 1/9/2018

	Cars Arrived	Cars Received in Interchange	Cars Delivered in Interchange	Cars Placed for Unloading	Loads on Wheels at Destination As of 1/9/2018
CN	246			195	287

Port Unloads

	01/09	01/08	Week To Date	Last Week
CN	221	263	484	644

Age Profile of Loaded Cars Waiting Placement for Unloading

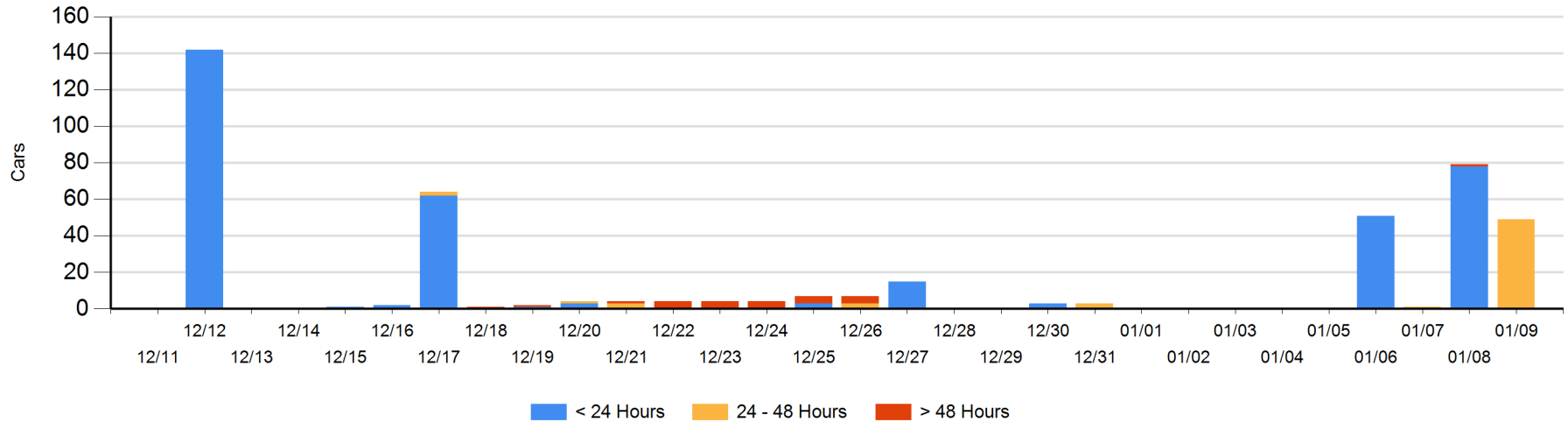
Today

	< 24 Hrs	24 - 48 Hrs	> 48-72 Hrs	> 72 Hrs	Total On Hand
CN		49			49

Change in Last 24 Hours

	< 24 Hrs	24-48 Hrs	48 - 72 Hrs	> 72 Hrs
CN	-78	49	-1	

Loaded Cars on Hand Prince Rupert Waiting for Placement - Last 30 Days All Railways



Port Terminal Status

Thunder Bay

Daily Activity for 1/9/2018

	Cars Arrived	Cars Received in Interchange	Cars Delivered in Interchange	Cars Placed for Unloading	Loads on Wheels at Destination As of 1/9/2018
CN					88
CP	2				6

Port Unloads

	01/09	01/08	Week To Date	Last Week
CN	73	82	155	317
CP	26	129	155	413

Age Profile of Loaded Cars Waiting Placement for Unloading

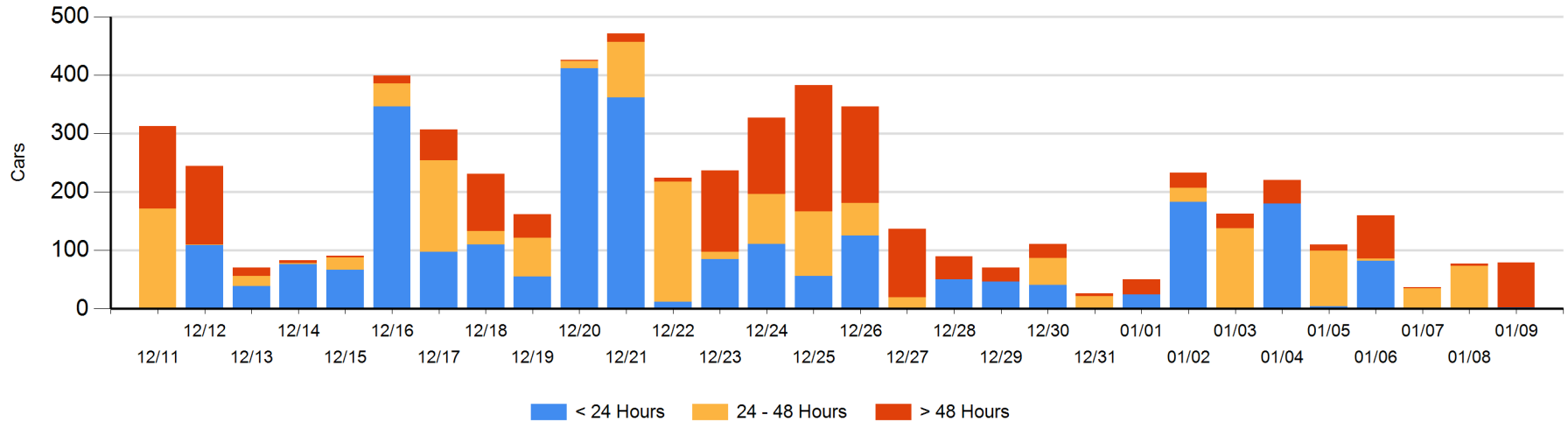
Today

	< 24 Hrs	24 - 48 Hrs	> 48-72 Hrs	> 72 Hrs	Total On Hand
CN			73		73
CP	2			4	6

Change in Last 24 Hours

	< 24 Hrs	24-48 Hrs	48 - 72 Hrs	> 72 Hrs
CN		-73	73	
CP	2		-2	2

Loaded Cars on Hand Thunder Bay Waiting for Placement - Last 30 Days All Railways



Measurement Definitions

Loads on Wheels	<p>Count of loaded rail cars including all rail cars that have been released loaded at origin and have not been reported by the railway as unloaded at destination.</p> <p>Counts include all rail cars (hopper cars and boxcars) moving within a pipeline.</p>
Loads Not Moving	<p>Loaded rail cars for which the railways have not reported a movement event for 48 hours or more whether the rail car is at origin, enroute or at destination.</p>
Port Unloads	<p>Count of rail cars reported by railways as unloaded at the western port destinations of Vancouver, Prince Rupert and Thunder Bay.</p> <p>Unload counts include all rail cars (hopper cars and boxcars) unloaded by all receivers including major port terminals, transloaders and other receivers.</p>
Cars Arrived	<p>Count of rail cars reported as arrived at the destination railway terminal.</p>
Cars Received in Interchange	<p>Count of rail cars received in interchange by each railway within a destination railway terminal. Interchange activity is tracked for the Vancouver and Thunder Bay pipelines as applicable.</p>
Cars Delivered in Interchange	<p>Count of rail cars delivered in interchange by each railway within a destination railway terminal. Interchange activity is tracked for the Vancouver and Thunder Bay pipelines as applicable.</p>
Cars Placed for Unloading	<p>Count of rail cars reported by the railways as placed loaded at the receiver's facility for unloading.</p>
Loads on Wheels at Destination	<p>Count of rail cars that remain under load within the destination railway terminal including rail cars that have been reported as placed for unloading but not yet reported as unloaded.</p>
Waiting Placement for Unloading	<p>Count of rail cars that have been reported as arrived at the destination railway terminal but not reported as placed for unloading by the railway.</p> <p>For the Ports of Vancouver, Prince Rupert and Thunder Bay the count of rail cars waiting placement for unloading is categorized by age – i.e. the elapsed time from arrival at destination to the current report date.</p>