

Speed Read

- Loads on Wheels
 - System volumes declined overnight for the fourth consecutive day reflecting principally lower volumes for CP.
 - The pattern of declining volumes seen thus far this week is at least in part a reflection of reduced shipper demand in week 52 and 1 coinciding with the beginning of the new grain year. Having said that, shipper demand, even at these reduced levels, remains higher than seen at this time of year in recent years.

Cars Not Moving

- The count of loaded cars not moving for 2+ days increased yesterday reflecting principally higher counts for CP.
- Port Unloads
 - West coast unloads (900) fell short of the 1,000 car threshold reflecting below average unloads at both Vancouver and Prince Rupert.

Loads on Wheels

- Loads on wheels declined 4% (-382) overnight and have now decreased for the fourth consecutive day, due to reduced volumes on both CN and CP - combined total at 10,435 and 9% below the trailing 30-day average.
- On a net basis, the decline in loads on wheels indicates reduced volumes in the Thunder Bay, Vancouver and Prince Rupert corridors offset by higher volumes in the USA/MEX and E. Canada corridors.
- CN volumes declined for the fourth consecutive day, down (-07) overnight, with reduced volumes in the Prince Rupert offset by higher volumes in the USA/MEX, Vancouver, Thunder Bay and E. Canada corridors. System wide CN loads on wheels presently at 6,382 and 2% below the trailing 30-day average.
- CP volumes decreased for the fourth consecutive day, down 9% (-375) overnight, driven by a decline in volumes in the Thunder Bay and Vancouver corridors offset by an increase in traffic in the USA/MEX and E. Canada corridors. CP system wide loads on wheels presently at 4,005, the lowest seen in the last 30 days, and 19% below the trailing 30-day average.
- Vancouver now at 6,160, declined 3% (-169) overnight and have now decreased for the fourth consecutive day, now 8% below the trailing 30-day average.
- The Prince Rupert pipeline presently at 1,471, declined for the third consecutive day, down 6% (-89) overnight, and 4% above the trailing 30-day average.
- Thunder Bay volumes declined 10% (-193) overnight and have now decreased for the fourth consecutive day - presently at 1,799, the lowest seen in the last 30 days, and 25% below the trailing 30-day average, with 51% of traffic moving on CP.

Hopper Car Rationing

- CN rationed no hopper car orders in week 51. Preliminary shipper reporting indicates no rationing has occurred in week 52 (last week).

Loads Not Moving

- **The count of cars not moving for 48+ hours increased 7% (+206) overnight, reflecting higher counts on both CN and CP. Idle car counts presently at 3,166 and 20% above the trailing 30-day average.**
- CN
 - **The count of idle cars for 48+ hours increased 3% (+49) overnight - presently at 2,000 cars.**
 - The number of cars idle for 4+ days increased 3% (+27) overnight - now at 1,081 cars.
 - The count of cars not moving for 7+ days increased significantly by 103% (+204) overnight - presently at 403 cars, the highest seen in the last 30 days.

- Vancouver represents 48% of all idle cars.
- In total 50% of all idle cars are dwelling at origin locations.
- CP
 - **CP idle car counts for 48+ hours increased 16% (+157) overnight - presently at 1,166 cars.**
 - The number of cars idle for 4+ days increased slightly by (+3) overnight - now at 669 cars.
 - The number of cars idle for 7+ days increased significantly by 60% (+127) overnight and have now increased for the fourth consecutive day - presently at 338 cars, the highest seen in the last 30 days.
 - Vancouver accounts for 68% of all idle cars.
 - In total 74% of all idle cars are dwelling at origin locations.

Port Performance

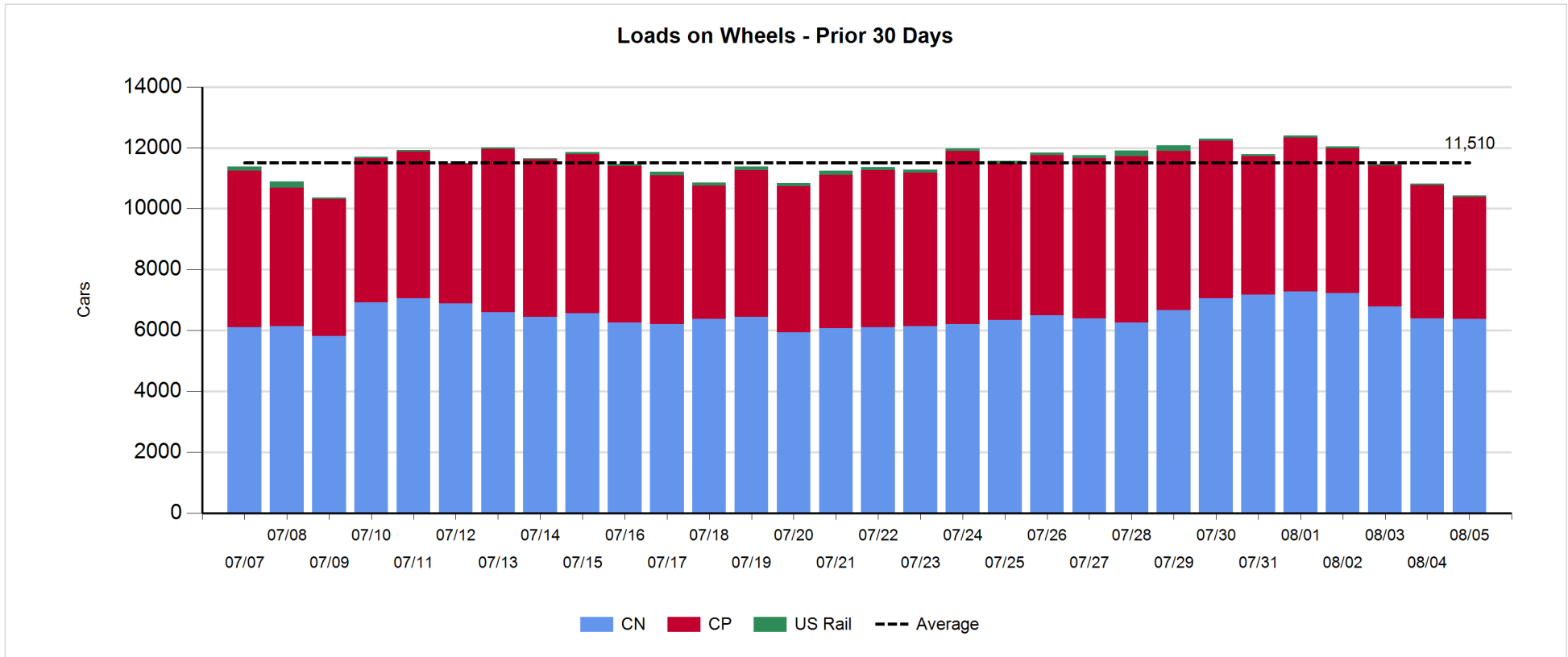
- CN and CP reported a total of 1,273 cars unloaded at the three major ports, now 3% below the trailing 30-day average. Three days in Week 1 unloads now ahead of last week's pace by 250 unloads, reflecting higher unloads at Prince Rupert and Thunder Bay offset by reduced unloads at Vancouver.
- Vancouver
 - 729 unloads reported by CN and CP at the Port of Vancouver; CN - 431 and CP - 298. Three days in Week 1 unloads are tracking behind last week's performance by nearly 50 unloads.
 - There are more than 1,400 cars on site at Vancouver with more than 1,000 cars arriving at the port in the last 24 hours.
 - CN and CP have more than 800 cars in British Columbia en route to Vancouver, with more than 450 cars at Kamloops and west, and 51% of traffic moving on CP.
- Prince Rupert
 - Prince Rupert reported 167 unloads, now ahead of last week's unloads after three days by about 250 unloads.
 - Loads on wheels now above 1,400 cars - now at 1,471 cars.
 - There are less than 300 cars west of Jasper en route to Prince Rupert.
 - There are less than 200 cars on site at Prince Rupert with 250 cars arriving at the port in the last 24 hours.
- Thunder Bay
 - 377 unloads were reported at Thunder Bay yesterday. Three days in Week 1 unloads are tracking ahead of last week's pace by 50 unloads.
 - There are 700 cars on site at Thunder Bay with more than 250 cars arriving at the port in the prior 24 hours.
 - There are about 650 cars en route to Thunder Bay from Winnipeg and east.

Daily Loads on Wheels - 8/5/2020

| | E Canada | Prince Rupert | Thunder Bay | USA/MEX | Vancouver | Total |
|------------|----------|---------------|-------------|---------|-----------|--------|
| CN | 555 | 1,471 | 877 | 157 | 3,322 | 6,382 |
| CP | 111 | | 922 | 134 | 2,838 | 4,005 |
| Short Line | | | | | | |
| US Rail | | | | 48 | | 48 |
| | 666 | 1,471 | 1,799 | 339 | 6,160 | 10,435 |

Change in Loads on Wheels - Prior 24 Hours

| | E Canada | Prince Rupert | Thunder Bay | USA/MEX | Vancouver | Total |
|------------|----------|---------------|-------------|---------|-----------|-------|
| CN | 8 | -89 | 16 | 33 | 25 | -7 |
| CP | 2 | | -209 | 23 | -191 | -375 |
| Short Line | -2 | | | | -3 | -5 |
| US Rail | | | | 5 | | 5 |
| | 8 | -89 | -193 | 61 | -169 | -382 |

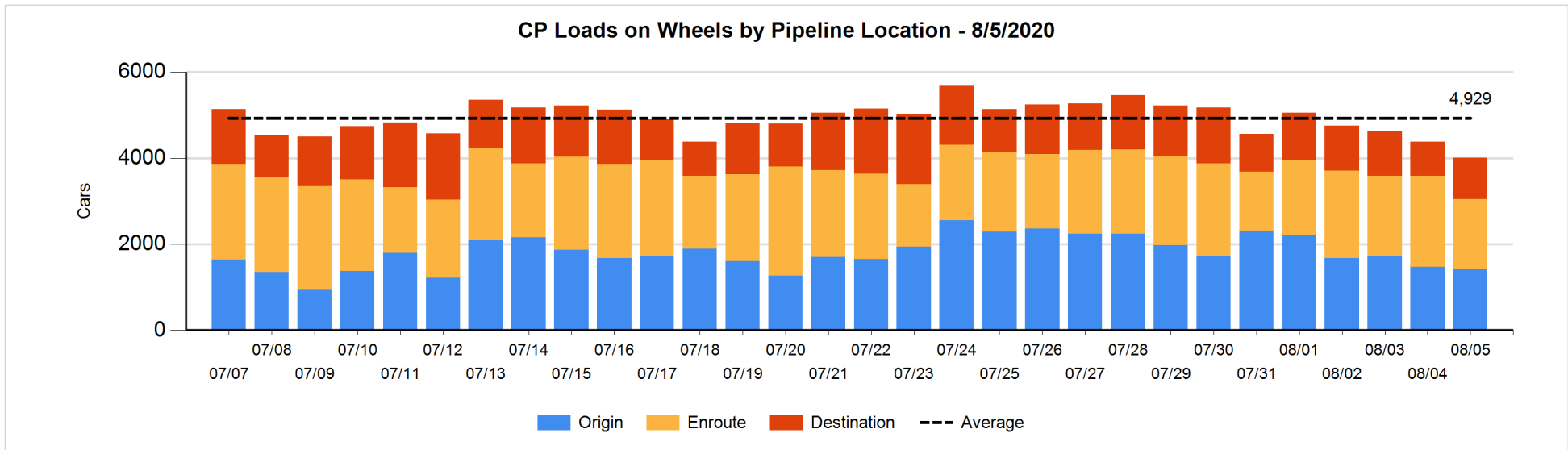
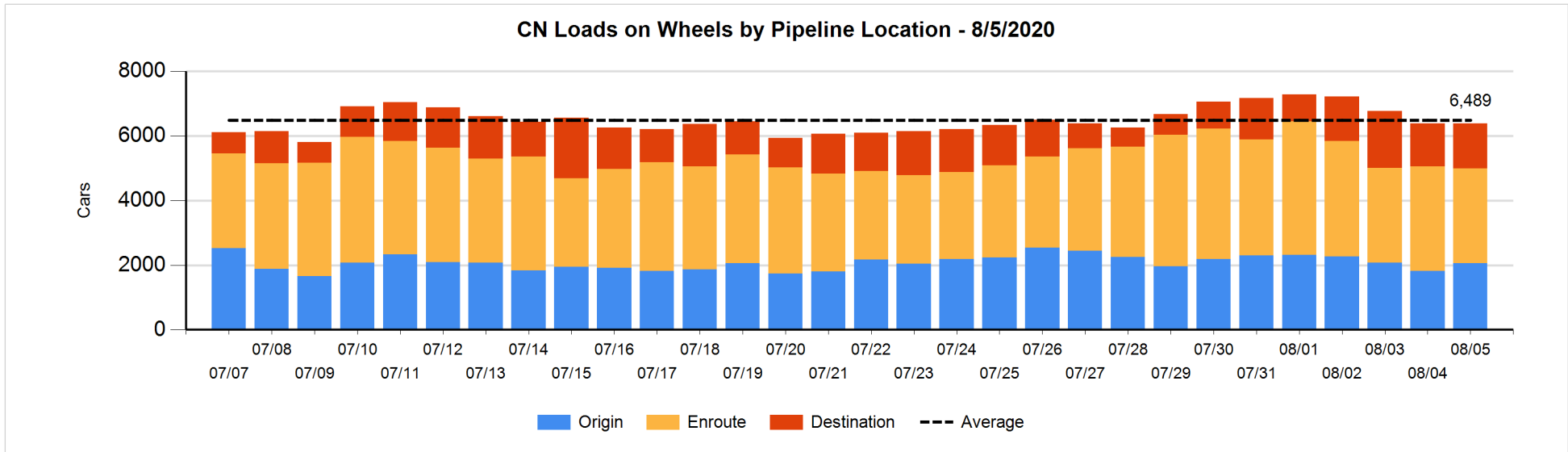


Daily Loads on Wheels By Pipeline Location - 8/5/2020

| | E Canada | Prince Rupert | Thunder Bay | USA/MEX | Vancouver | Total |
|----------------------|----------|---------------|-------------|---------|-----------|-------|
| CN | | | | | | |
| Origin | 179 | 629 | 125 | 53 | 1,070 | 2,056 |
| Enroute | 368 | 657 | 397 | 100 | 1,406 | 2,928 |
| Destination | 8 | 185 | 355 | 4 | 846 | 1,398 |
| | 555 | 1,471 | 877 | 157 | 3,322 | 6,382 |
| CP | | | | | | |
| Origin | 54 | | 168 | 27 | 1,180 | 1,429 |
| Enroute | 19 | | 406 | 106 | 1,087 | 1,618 |
| Destination | 38 | | 348 | 1 | 571 | 958 |
| | 111 | | 922 | 134 | 2,838 | 4,005 |
| US Rail / Short Line | | | | | | |
| Origin | | | | | | |
| Enroute | | | | 30 | | 30 |
| Destination | | | | 18 | | 18 |
| | | | | 48 | | 48 |

Change in Daily Loads on Wheels By Pipeline Location - Prior 24 Hours

| | E Canada | Prince Rupert | Thunder Bay | USA/MEX | Vancouver | Total |
|----------------------|----------|---------------|-------------|---------|-----------|-------|
| CN | | | | | | |
| Origin | -71 | 27 | 125 | 38 | 117 | 236 |
| Enroute | 79 | -204 | -29 | 7 | -156 | -303 |
| Destination | 0 | 88 | -80 | -12 | 64 | 60 |
| | 8 | -89 | 16 | 33 | 25 | -7 |
| CP | | | | | | |
| Origin | 0 | | -55 | 24 | -6 | -37 |
| Enroute | 2 | | -101 | -1 | -402 | -502 |
| Destination | 0 | | -53 | 0 | 217 | 164 |
| | 2 | | -209 | 23 | -191 | -375 |
| US Rail / Short Line | | | | | | |
| Origin | | | | | | |
| Enroute | | | | 1 | | 1 |
| Destination | -2 | | | 4 | -3 | -1 |
| | -2 | | | 5 | -3 | 0 |

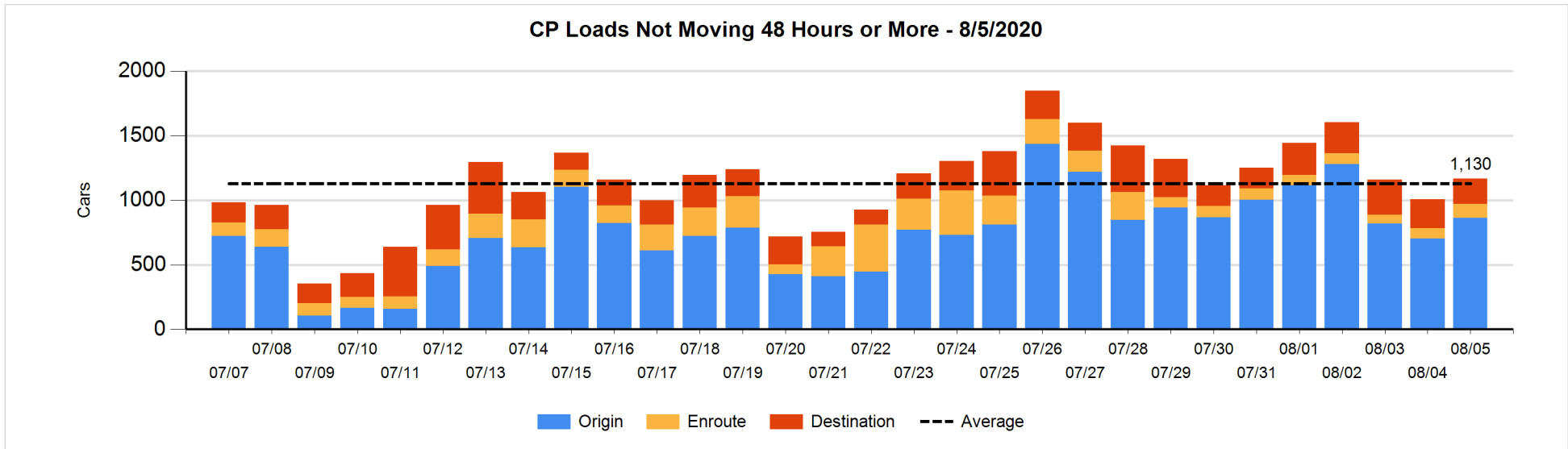
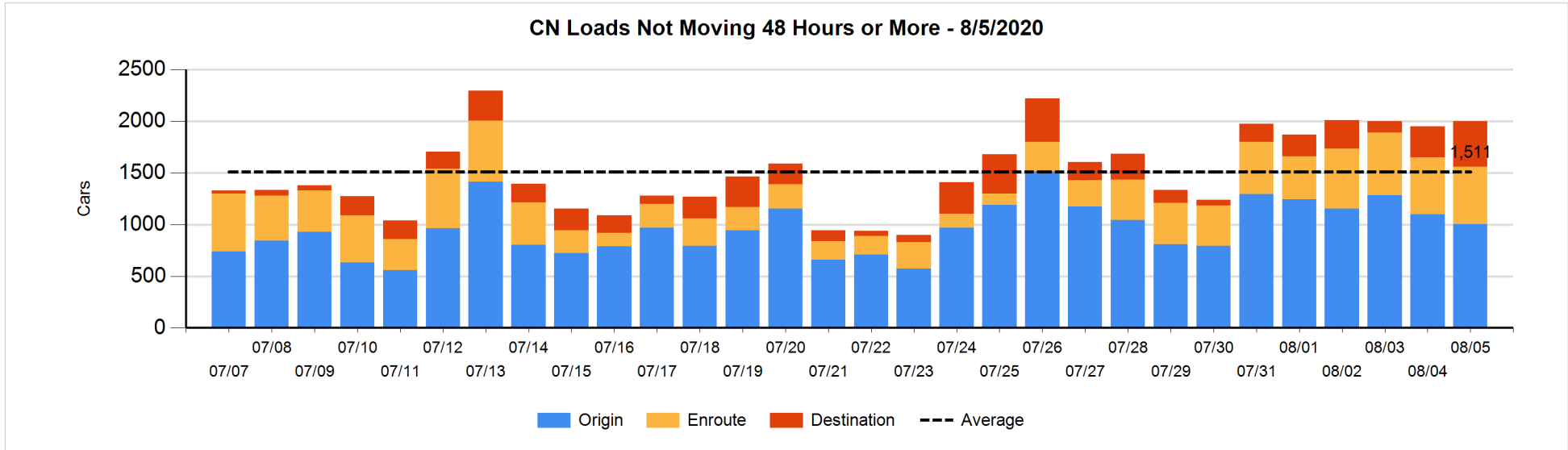


Loads Not Moving 48 Hours or More - 8/5/2020

| | E Canada | Prince Rupert | Thunder Bay | USA/MEX | Vancouver | Total |
|-----------------------------|----------|---------------|-------------|---------|-----------|-------|
| CN | | | | | | |
| Origin | 51 | 325 | | 1 | 626 | 1003 |
| Enroute | 113 | 13 | 214 | 30 | 187 | 557 |
| Destination | 5 | 2 | 283 | 1 | 149 | 440 |
| | 169 | 340 | 497 | 32 | 962 | 2000 |
| CP | | | | | | |
| Origin | 4 | | 112 | 1 | 748 | 865 |
| Enroute | 4 | | 1 | 99 | 1 | 105 |
| Destination | | | 150 | 1 | 45 | 196 |
| | 8 | | 263 | 101 | 794 | 1166 |
| US Rail / Short Line | | | | | | |
| Origin | | | | | | |
| Enroute | | | | 11 | | 11 |
| Destination | | | | 11 | | 11 |
| | | | | 22 | | 22 |

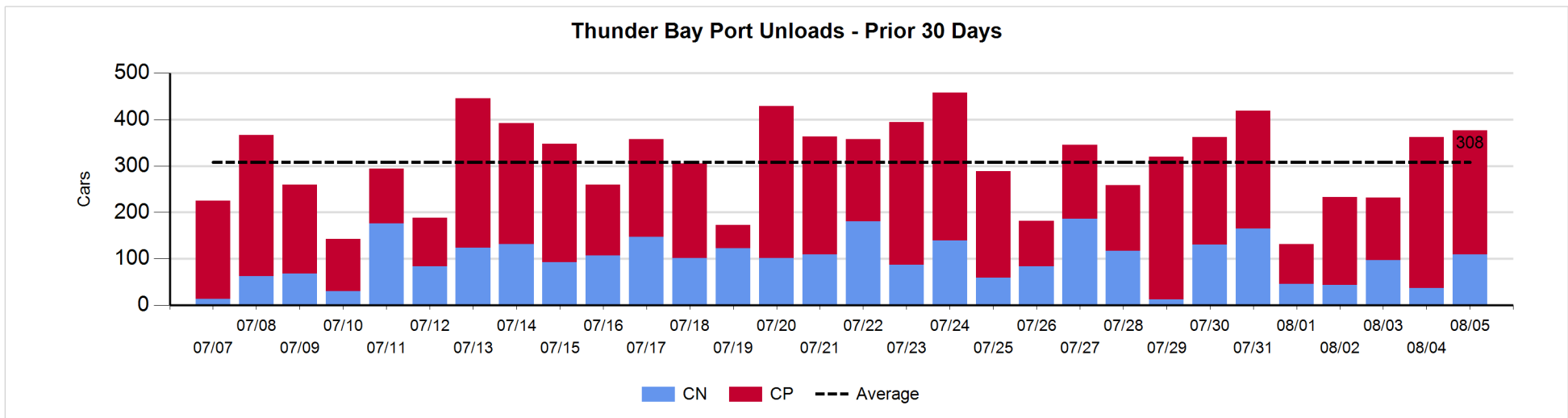
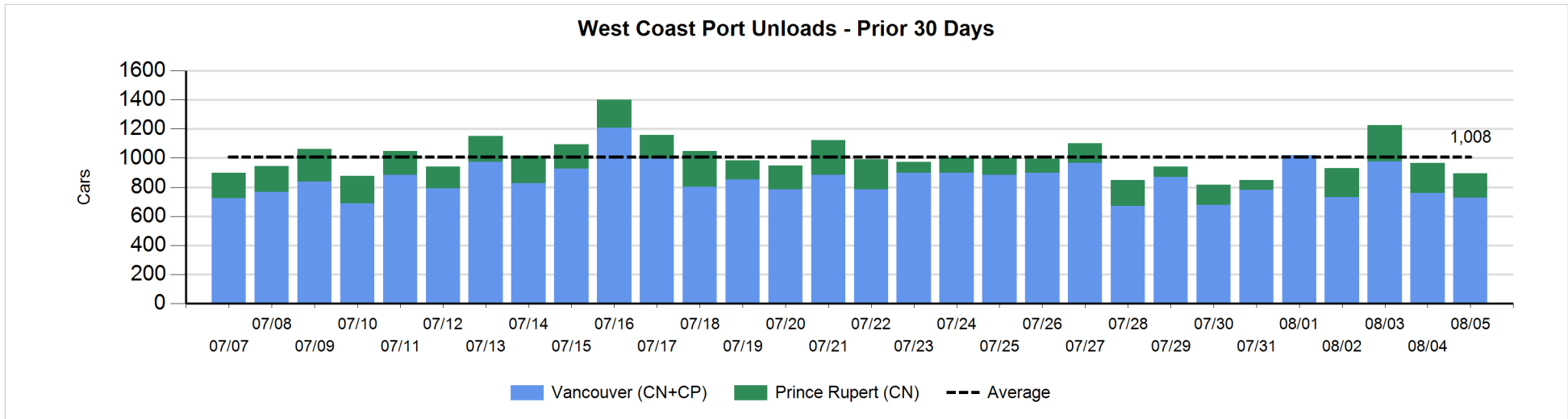
Change in Loads Not Moving 48 Hours or More - 8/5/2020

| | E Canada | Prince Rupert | Thunder Bay | USA/MEX | Vancouver | Total |
|-----------------------------|----------|---------------|-------------|---------|-----------|-------|
| CN | | | | | | |
| Origin | -97 | 96 | | 1 | -96 | -96 |
| Enroute | 39 | -1 | -29 | -1 | 0 | 8 |
| Destination | 0 | 0 | 113 | -1 | 25 | 137 |
| | -58 | 95 | 84 | -1 | -71 | 49 |
| CP | | | | | | |
| Origin | 0 | | 0 | 1 | 162 | 163 |
| Enroute | 1 | | -16 | 40 | -1 | 24 |
| Destination | | | -29 | 0 | -1 | -30 |
| | 1 | | -45 | 41 | 160 | 157 |
| US Rail / Short Line | | | | | | |
| Origin | | | | | | |
| Enroute | | | | -3 | | -3 |
| Destination | -2 | | | 0 | -3 | -5 |
| | -2 | | | -3 | -3 | -8 |



Port Unloads - 8/5/2020

| | Prince Rupert | Vancouver | West Coast Total | Thunder Bay | Total |
|----|---------------|-----------|------------------|-------------|-------|
| CN | 167 | 431 | 598 | 109 | 707 |
| CP | | 298 | 298 | 268 | 566 |
| | 167 | 729 | 896 | 377 | 1,273 |



Port Terminal Status

Vancouver

Daily Activity for 8/5/2020

| | Cars Arrived | Cars Received in Interchange | Cars Delivered in Interchange | Cars Placed for Unloading | Loads on Wheels at Destination As of 8/5/2020 |
|-----|--------------|------------------------------|-------------------------------|---------------------------|---|
| CN | 343 | 235 | 144 | 497 | 846 |
| CP | 670 | 144 | 235 | 272 | 571 |
| SRY | | | | 4 | |

Port Unloads

| | 08/05 | 08/04 | Week To Date | Last Week |
|-----|-------|-------|--------------|-----------|
| CN | 431 | 485 | 1,543 | 2,943 |
| CP | 298 | 273 | 919 | 2,771 |
| SRY | 4 | 7 | 16 | 25 |

Age Profile of Loaded Cars Waiting Placement for Unloading

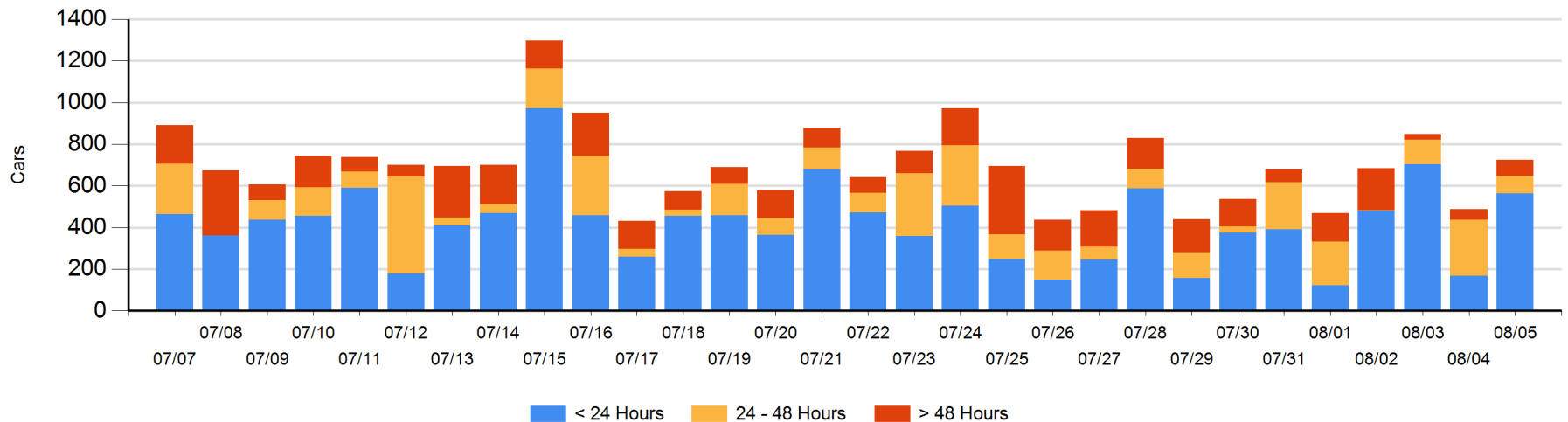
Today

| | < 24 Hrs | 24 - 48 Hrs | > 48-72 Hrs | > 72 Hrs | Total On Hand |
|-----|----------|-------------|-------------|----------|---------------|
| CN | 97 | 1 | 62 | | 160 |
| CP | 466 | 83 | 1 | 16 | 566 |
| SRY | | | | | 0 |

Change in Last 24 Hours

| | < 24 Hrs | 24-48 Hrs | 48 - 72 Hrs | > 72 Hrs |
|-----|----------|-----------|-------------|----------|
| CN | 65 | -196 | 36 | -3 |
| CP | 329 | 13 | -10 | 4 |
| SRY | | | | |

Loaded Cars on Hand Vancouver Waiting for Placement - Last 30 Days All Railways



Port Terminal Status

Prince Rupert

Daily Activity for 8/5/2020

| | Cars Arrived | Cars Received in Interchange | Cars Delivered in Interchange | Cars Placed for Unloading | Loads on Wheels at Destination As of 8/5/2020 |
|----|--------------|------------------------------|-------------------------------|---------------------------|---|
| CN | 257 | | | 273 | 185 |

Port Unloads

| | 08/05 | 08/04 | Week To Date | Last Week |
|----|-------|-------|--------------|-----------|
| CN | 167 | 207 | 624 | 795 |

Age Profile of Loaded Cars Waiting Placement for Unloading

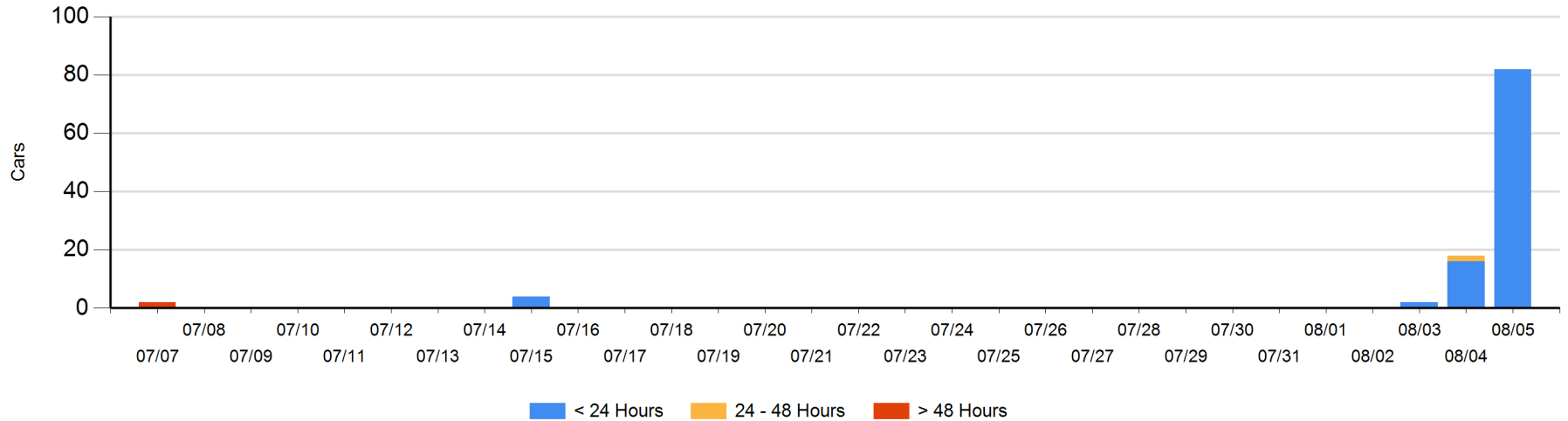
Today

| | < 24 Hrs | 24 - 48 Hrs | > 48-72 Hrs | > 72 Hrs | Total On Hand |
|----|----------|-------------|-------------|----------|---------------|
| CN | 82 | | | | 82 |

Change in Last 24 Hours

| | < 24 Hrs | 24-48 Hrs | 48 - 72 Hrs | > 72 Hrs |
|----|----------|-----------|-------------|----------|
| CN | 66 | -2 | | |

Loaded Cars on Hand Prince Rupert Waiting for Placement - Last 30 Days All Railways



Port Terminal Status

Thunder Bay

Daily Activity for 8/5/2020

| | Cars Arrived | Cars Received in Interchange | Cars Delivered in Interchange | Cars Placed for Unloading | Loads on Wheels at Destination As of 8/5/2020 |
|----|--------------|------------------------------|-------------------------------|---------------------------|---|
| CN | 29 | | | 69 | 355 |
| CP | 250 | | | 199 | 348 |

Port Unloads

| | 08/05 | 08/04 | Week To Date | Last Week |
|----|-------|-------|--------------|-----------|
| CN | 109 | 37 | 243 | 700 |
| CP | 268 | 325 | 728 | 1,368 |

Age Profile of Loaded Cars Waiting Placement for Unloading

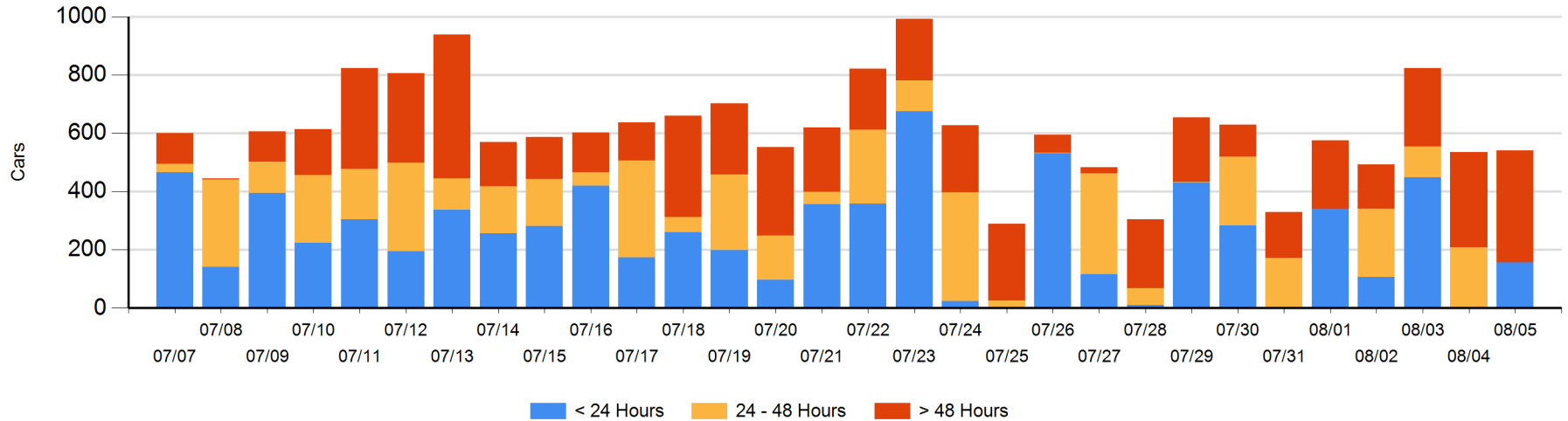
Today

| | < 24 Hrs | 24 - 48 Hrs | > 48-72 Hrs | > 72 Hrs | Total On Hand |
|----|----------|-------------|-------------|----------|---------------|
| CN | 3 | | 87 | 147 | 237 |
| CP | 154 | | 40 | 110 | 304 |

Change in Last 24 Hours

| | < 24 Hrs | 24-48 Hrs | 48 - 72 Hrs | > 72 Hrs |
|----|----------|-----------|-------------|----------|
| CN | 3 | -129 | -19 | 105 |
| CP | 154 | -80 | 40 | -68 |

Loaded Cars on Hand Thunder Bay Waiting for Placement - Last 30 Days All Railways



Measurement Definitions

| | |
|---------------------------------|---|
| Loads on Wheels | <p>Count of loaded rail cars including all rail cars that have been released loaded at origin and have not been reported by the railway as unloaded at destination.</p> <p>Counts include all rail cars (hopper cars and boxcars) moving within a pipeline.</p> |
| Loads Not Moving | <p>Loaded rail cars for which the railways have not reported a movement event for 48 hours or more whether the rail car is at origin, enroute or at destination.</p> |
| Port Unloads | <p>Count of rail cars reported by railways as unloaded at the western port destinations of Vancouver, Prince Rupert and Thunder Bay.</p> <p>Unload counts include all rail cars (hopper cars and boxcars) unloaded by all receivers including major port terminals, transloaders and other receivers.</p> |
| Cars Arrived | <p>Count of rail cars reported as arrived at the destination railway terminal.</p> |
| Cars Received in Interchange | <p>Count of rail cars received in interchange by each railway within a destination railway terminal. Interchange activity is tracked for the Vancouver and Thunder Bay pipelines as applicable.</p> |
| Cars Delivered in Interchange | <p>Count of rail cars delivered in interchange by each railway within a destination railway terminal. Interchange activity is tracked for the Vancouver and Thunder Bay pipelines as applicable.</p> |
| Cars Placed for Unloading | <p>Count of rail cars reported by the railways as placed loaded at the receiver's facility for unloading.</p> |
| Loads on Wheels at Destination | <p>Count of rail cars that remain under load within the destination railway terminal including rail cars that have been reported as placed for unloading but not yet reported as unloaded.</p> |
| Waiting Placement for Unloading | <p>Count of rail cars that have been reported as arrived at the destination railway terminal but not reported as placed for unloading by the railway.</p> <p>For the Ports of Vancouver, Prince Rupert and Thunder Bay the count of rail cars waiting placement for unloading is categorized by age – i.e. the elapsed time from arrival at destination to the current report date.</p> |