

## Speed Read

- Loads on Wheels
  - System volumes increase slightly on a net basis yesterday reflecting higher volumes on CN offset by lower volumes on CP in nearly equal measure.
  - The pattern of declining volumes seen thus far this week is at least in part a reflection of reduced shipper demand in week 52 and 1 coinciding with the beginning of the new grain year. Having said that, shipper demand, even at these reduced levels, remains higher than seen at this time of year in recent years.
- Cars Not Moving
  - The count of loaded cars not moving for 2+ days fell significantly yesterday declining by nearly 700 cars reflecting improved counts for each of CN and CP.
- Port Unloads
  - West coast unloads (1,005) returned above the 1,000 car threshold reflecting below average unloads at Vancouver and improved unloads at Prince Rupert.

## Loads on Wheels

- Loads on wheels gained 2% (+158) overnight, due to higher volumes on CN offset by lower volumes on CP - combined total at 10,595 and 8% below the trailing 30-day average.
- On a net basis, the increase in loads on wheels reflects higher volumes across all corridors other than Vancouver.
- CN volumes gained 6% (+361) overnight, with higher volumes across all corridors. System wide CN loads on wheels currently at 6,744 and 4% above the trailing 30-day average.
- CP volumes fell for the fifth consecutive day, down 7% (-300) overnight, driven by a decline in volumes in the Vancouver and E. Canada corridors offset by a rise in volumes in the Thunder Bay and USA/MEX corridors. CP system wide loads on wheels currently at 3,706, the lowest seen in the last 30 days, and 24% below the trailing 30-day average.
- Vancouver currently at 5,905, the lowest seen in the last 30 days, declined 4% (-257) overnight and have now decreased for the fifth consecutive day, now 11% below the trailing 30-day average.
- The Prince Rupert pipeline currently at 1,474, gained slightly by (+3) overnight, and 4% above the trailing 30-day average.
- Thunder Bay volumes increased significantly by 12% (+223) overnight - currently at 2,022 and 15% below the trailing 30-day average, with 54% of traffic moving on CP.

## Hopper Car Rationing

- CN rationed no hopper car orders in week 52 (last week). Preliminary shipper reporting indicates no rationing is taking place in week 01.

## Loads Not Moving

- **The count of cars not moving for 48+ hours decreased 21% (-667) overnight, reflecting lower counts on both CN and CP. Idle car counts currently at 2,495 and 6% below the trailing 30-day average.**
- CN
  - **The count of idle cars for 48+ hours declined 15% (-295) overnight - currently at 1,701 cars.**
  - The number of cars idle for 4+ days decreased 11% (-118) overnight - currently at 963 cars.
  - The count of cars not moving for 7+ days decreased significantly by 77% (-312) overnight - currently at 91 cars.

- Vancouver represents 52% of all idle cars.
- In total 53% of all idle cars are dwelling at origin locations.
- CP
  - **CP idle car counts for 48+ hours declined 32% (-372) overnight - currently at 794 cars.**
  - The number of cars idle for 4+ days fell 27% (-178) overnight - currently at 491 cars.
  - The number of cars idle for 7+ days decreased 36% (-122) overnight - currently at 216 cars.
  - Vancouver accounts for 66% of all idle cars.
  - In total 67% of all idle cars are dwelling at origin locations.

### **Port Performance**

- CN and CP reported a total of 1,250 cars unloaded at the three major ports, now 5% below the trailing 30-day average. Four days in Week 1 unloads now ahead of last week's pace by more than 300 unloads, reflecting higher unloads at Prince Rupert and Vancouver offset by lower unloads at Thunder Bay.
- Vancouver
  - 808 unloads reported by CN and CP at the Port of Vancouver; CN - 391 and CP - 417. Four days in Week 1 unloads are tracking ahead of last week's performance by less than 100 unloads.
  - There are more than 1,250 cars on site at Vancouver with 650 cars arriving at the port in the last 24 hours.
  - CN and CP have 750 cars in British Columbia en route to Vancouver, with 400 cars at Kamloops and west, and 53% of traffic moving on CN.
- Prince Rupert
  - Prince Rupert reported 196 unloads, now ahead of last week's unloads after four days by 300 unloads.
  - Loads on wheels now above 1,000 cars - currently at 1,474 cars.
  - There are 300 cars west of Jasper en route to Prince Rupert.
  - There are less than 100 cars on site at Prince Rupert with 100 cars arriving at the port in the last 24 hours.
- Thunder Bay
  - 246 unloads were reported at Thunder Bay yesterday. Four days in Week 1 unloads are tracking behind last week's pace by more than 50 unloads.
  - There are 750 cars on site at Thunder Bay with 300 cars arriving at the port in the prior 24 hours.
  - There are 450 cars en route to Thunder Bay from Winnipeg and east.

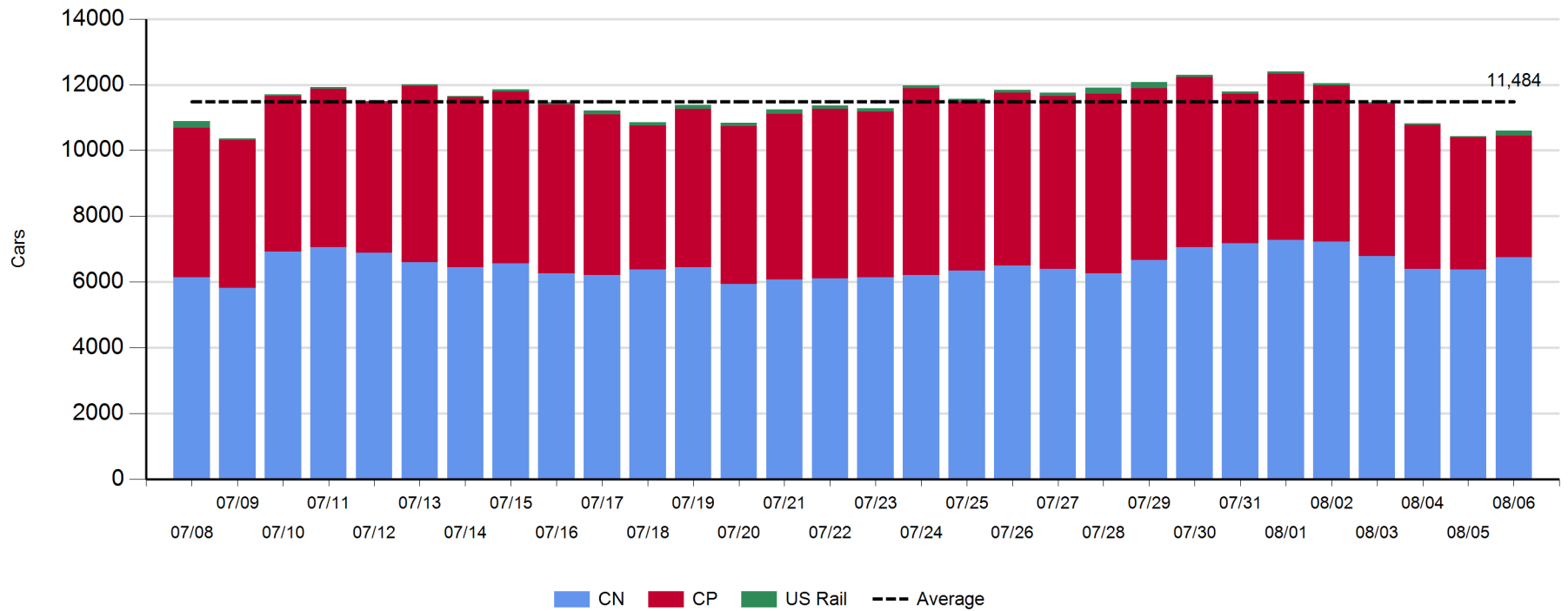
**Daily Loads on Wheels - 8/6/2020**

	E Canada	Prince Rupert	Thunder Bay	USA/MEX	Vancouver	Total
CN	658	1,474	938	163	3,511	6,744
CP	92		1,084	136	2,394	3,706
Short Line						
US Rail				145		145
	750	1,474	2,022	444	5,905	10,595

**Change in Loads on Wheels - Prior 24 Hours**

	E Canada	Prince Rupert	Thunder Bay	USA/MEX	Vancouver	Total
CN	103	3	61	6	188	361
CP	-19		162	2	-445	-300
Short Line						
US Rail				97		97
	84	3	223	105	-257	158

**Loads on Wheels - Prior 30 Days**



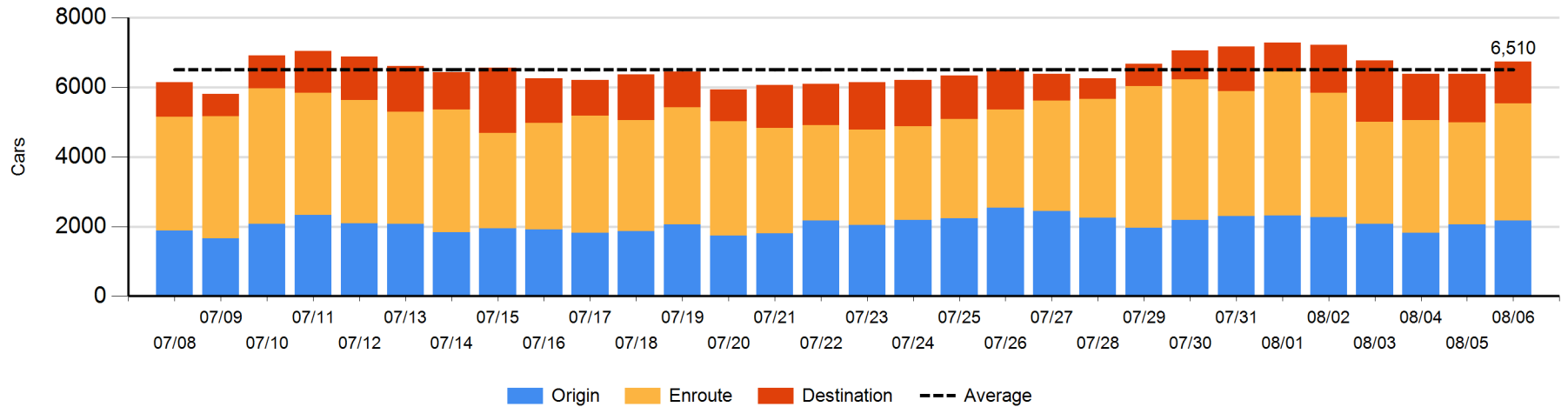
**Daily Loads on Wheels By Pipeline Location - 8/6/2020**

	E Canada	Prince Rupert	Thunder Bay	USA/MEX	Vancouver	Total
CN						
Origin	180	601	187	14	1,181	2,163
Enroute	453	787	469	148	1,519	3,376
Destination	25	86	282	1	811	1,205
	658	1,474	938	163	3,511	6,744
CP						
Origin	50		336	30	603	1,019
Enroute	23		281	105	1,338	1,747
Destination	19		467	1	453	940
	92		1,084	136	2,394	3,706
US Rail / Short Line						
Origin						
Enroute				28		28
Destination				117		117
				145		145

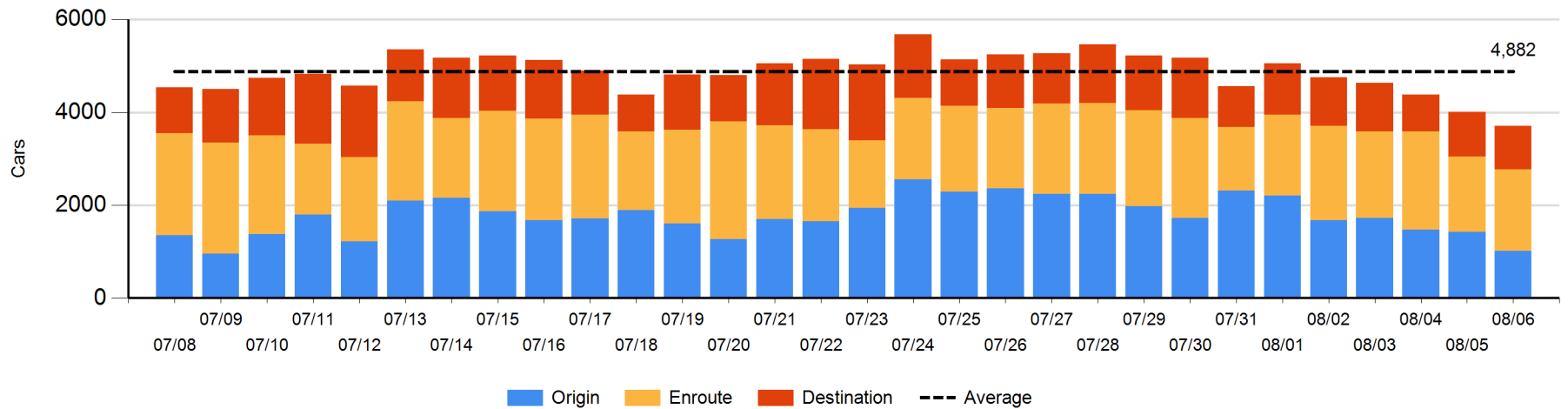
**Change in Daily Loads on Wheels By Pipeline Location - Prior 24 Hours**

	E Canada	Prince Rupert	Thunder Bay	USA/MEX	Vancouver	Total
CN						
Origin	1	-28	62	-39	116	112
Enroute	85	130	72	48	107	442
Destination	17	-99	-73	-3	-35	-193
	103	3	61	6	188	361
CP						
Origin	-4		168	3	-577	-410
Enroute	4		-125	-1	251	129
Destination	-19		119	0	-119	-19
	-19		162	2	-445	-300
US Rail / Short Line						
Origin						
Enroute				-2		-2
Destination				99		99
				97		97

**CN Loads on Wheels by Pipeline Location - 8/6/2020**



**CP Loads on Wheels by Pipeline Location - 8/6/2020**

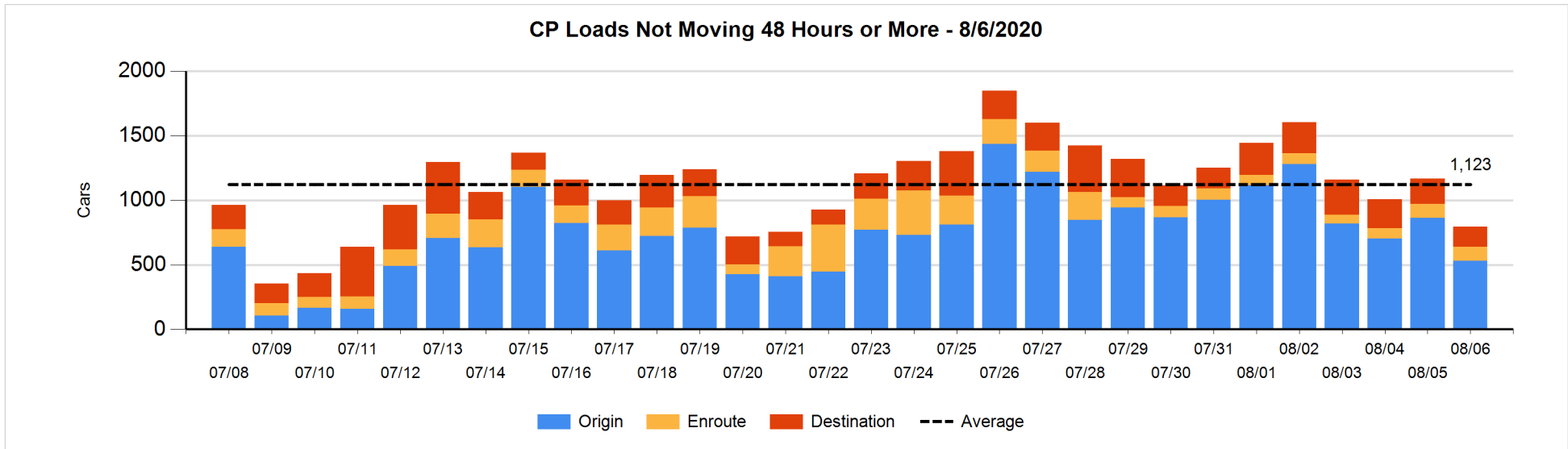
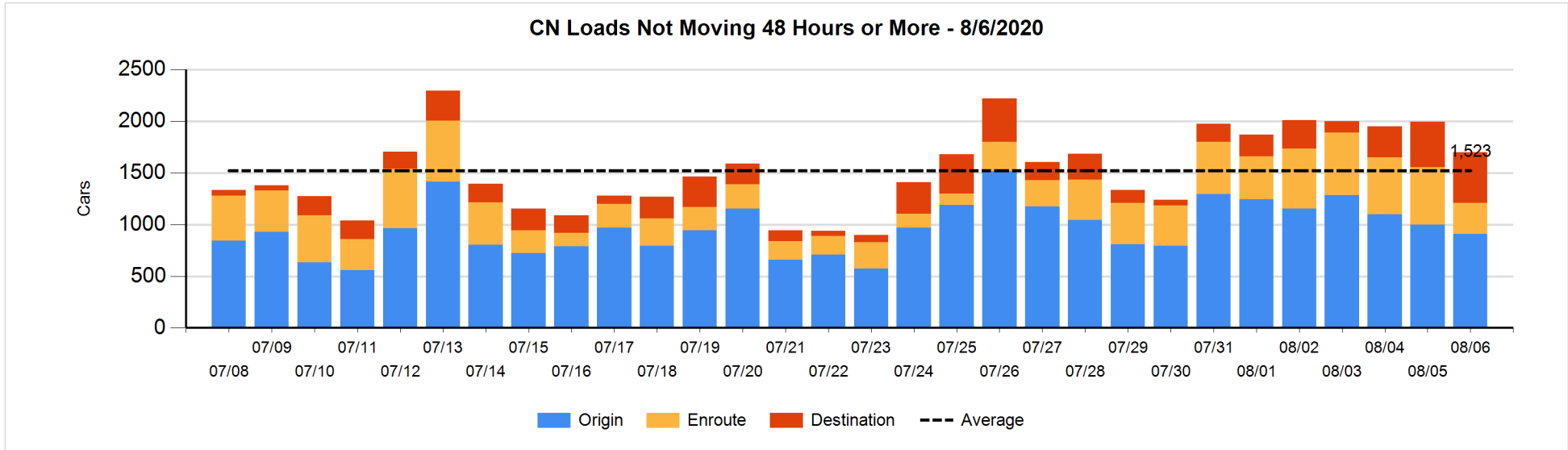


**Loads Not Moving 48 Hours or More - 8/6/2020**

	E Canada	Prince Rupert	Thunder Bay	USA/MEX	Vancouver	Total
<b>CN</b>						
Origin	52	375		1	479	907
Enroute	106	12	5	10	170	303
Destination	5	2	252		232	491
	163	389	257	11	881	1701
<b>CP</b>						
Origin	50		1	3	477	531
Enroute	3		1	98	5	107
Destination	11		102	1	42	156
	64		104	102	524	794
<b>US Rail / Short Line</b>						
Origin						
Enroute				8		8
Destination				11		11
				19		19

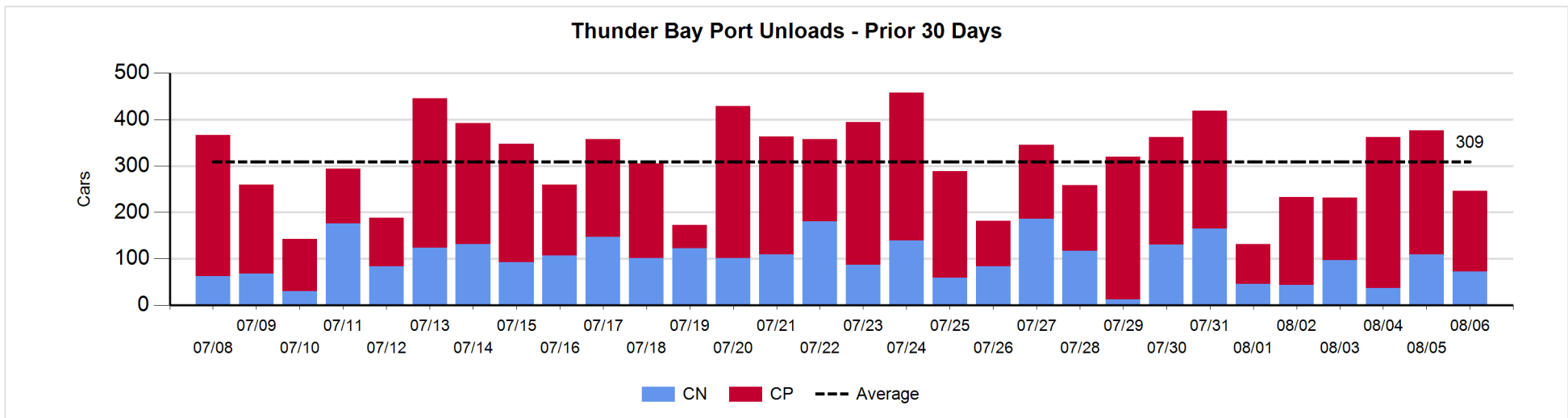
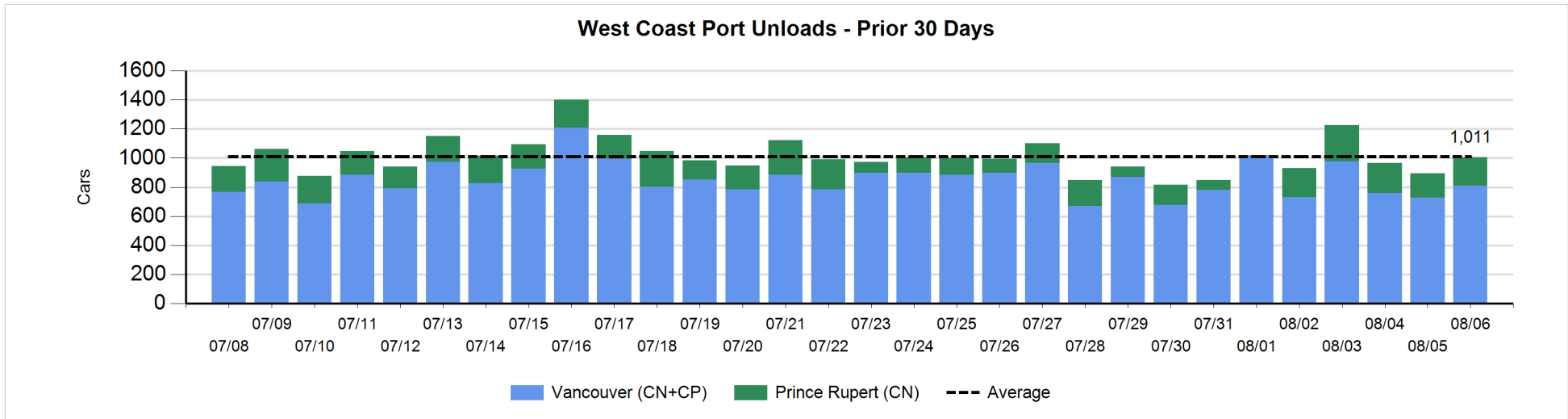
**Change in Loads Not Moving 48 Hours or More - 8/6/2020**

	E Canada	Prince Rupert	Thunder Bay	USA/MEX	Vancouver	Total
<b>CN</b>						
Origin	1	50		0	-143	-92
Enroute	-7	-1	-209	-20	-17	-254
Destination	0	0	-31	-1	83	51
	-6	49	-240	-21	-77	-295
<b>CP</b>						
Origin	46		-111	2	-271	-334
Enroute	-1		0	-1	4	2
Destination	11		-48	0	-3	-40
	56		-159	1	-270	-372
<b>US Rail / Short Line</b>						
Origin						
Enroute				-3		-3
Destination				0		0
				-3		-3



**Port Unloads - 8/6/2020**

	Prince Rupert	Vancouver	West Coast Total	Thunder Bay	Total
CN	196	391	587	73	660
CP		417	417	173	590
	196	808	1,004	246	1,250





**Port Terminal Status**

**Vancouver**

Daily Activity for 8/6/2020

	Cars Arrived	Cars Received in Interchange	Cars Delivered in Interchange	Cars Placed for Unloading	Loads on Wheels at Destination As of 8/6/2020
CN	219	124	15	389	811
CP	439	15	124	475	453
SRY					

**Port Unloads**

	08/06	08/05	Week To Date	Last Week
CN	391	431	1,934	2,943
CP	417	298	1,336	2,771
SRY	1	4	17	25

**Age Profile of Loaded Cars Waiting Placement for Unloading**

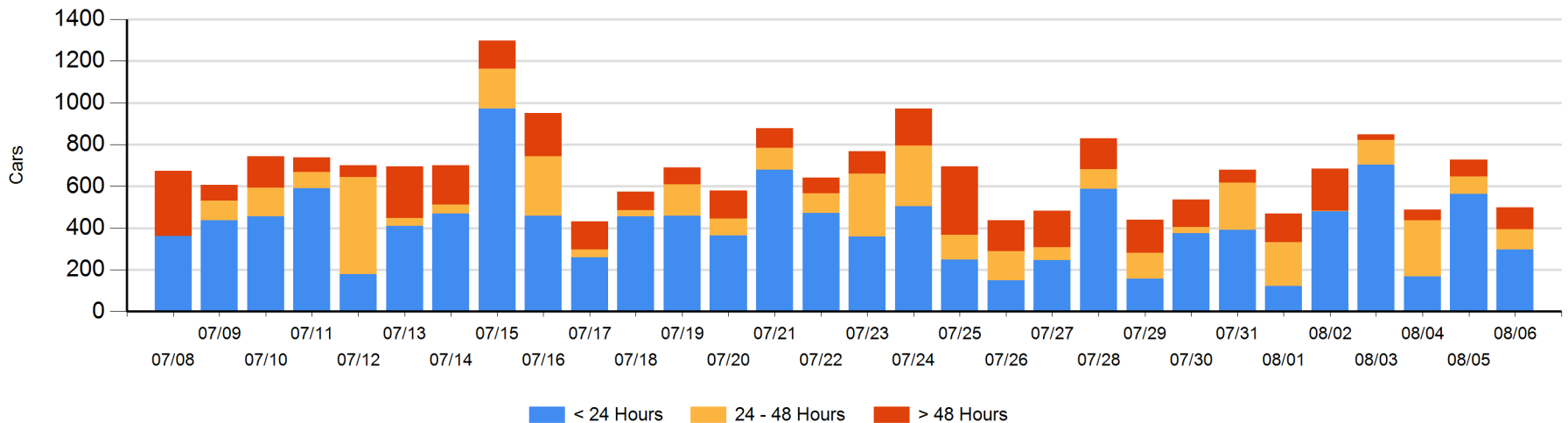
**Today**

	< 24 Hrs	24 - 48 Hrs	> 48-72 Hrs	> 72 Hrs	Total On Hand
CN	110	10	1	8	129
CP	187	87	83	13	370
SRY					0

**Change in Last 24 Hours**

	< 24 Hrs	24-48 Hrs	48 - 72 Hrs	> 72 Hrs
CN	13	9	-61	8
CP	-280	4	82	-3
SRY				

**Loaded Cars on Hand Vancouver Waiting for Placement - Last 30 Days All Railways**



**Port Terminal Status**

**Prince Rupert**

**Daily Activity for 8/6/2020**

	Cars Arrived	Cars Received in Interchange	Cars Delivered in Interchange	Cars Placed for Unloading	Loads on Wheels at Destination As of 8/6/2020
CN	97			97	86

**Port Unloads**

	08/06	08/05	Week To Date	Last Week
CN	196	167	820	795

**Age Profile of Loaded Cars Waiting Placement for Unloading**

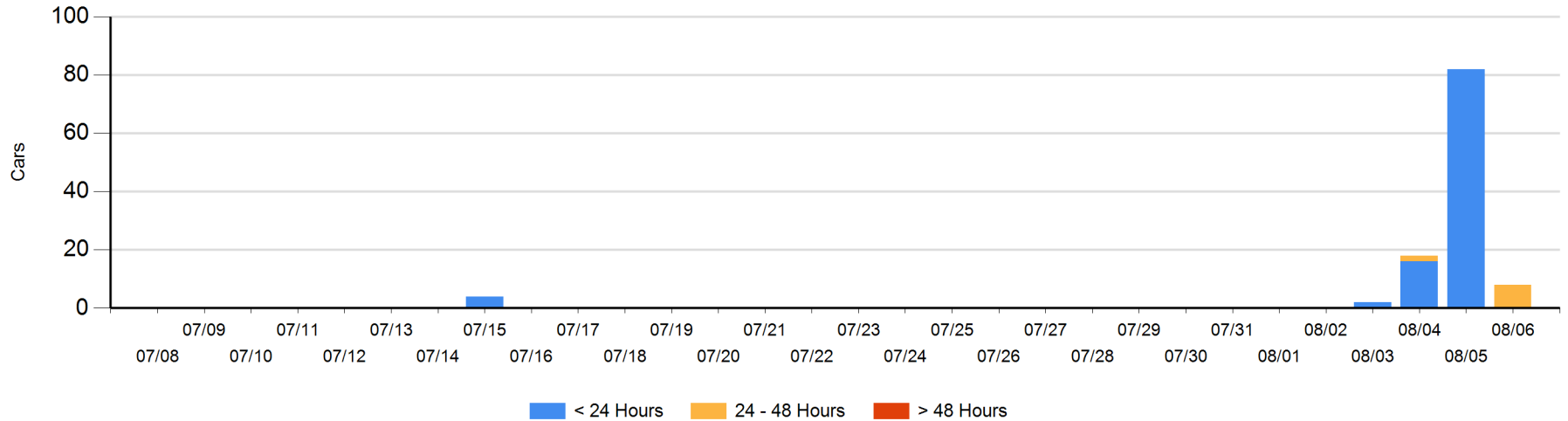
**Today**

	< 24 Hrs	24 - 48 Hrs	> 48-72 Hrs	> 72 Hrs	Total On Hand
CN		8			8

**Change in Last 24 Hours**

	< 24 Hrs	24-48 Hrs	48 - 72 Hrs	> 72 Hrs
CN	-82	8		

**Loaded Cars on Hand Prince Rupert Waiting for Placement - Last 30 Days All Railways**



**Port Terminal Status**

**Thunder Bay**

Daily Activity for 8/6/2020

	Cars Arrived	Cars Received in Interchange	Cars Delivered in Interchange	Cars Placed for Unloading	Loads on Wheels at Destination As of 8/6/2020
CN					282
CP	292			145	467

**Port Unloads**

	08/06	08/05	Week To Date	Last Week
CN	73	109	316	700
CP	173	268	901	1,368

**Age Profile of Loaded Cars Waiting Placement for Unloading**

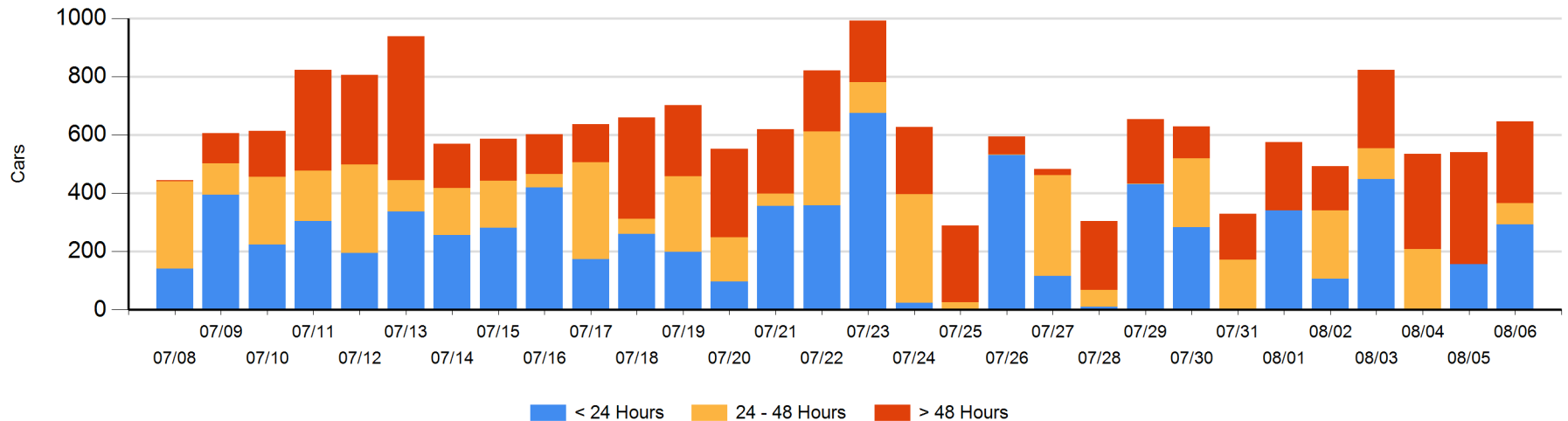
**Today**

	< 24 Hrs	24 - 48 Hrs	> 48-72 Hrs	> 72 Hrs	Total On Hand
CN		3		193	196
CP	292	71		88	451

**Change in Last 24 Hours**

	< 24 Hrs	24-48 Hrs	48 - 72 Hrs	> 72 Hrs
CN	-3	3	-87	46
CP	138	71	-40	-22

**Loaded Cars on Hand Thunder Bay Waiting for Placement - Last 30 Days All Railways**



## Measurement Definitions

Loads on Wheels	<p>Count of loaded rail cars including all rail cars that have been released loaded at origin and have not been reported by the railway as unloaded at destination.</p> <p>Counts include all rail cars (hopper cars and boxcars) moving within a pipeline.</p>
Loads Not Moving	<p>Loaded rail cars for which the railways have not reported a movement event for 48 hours or more whether the rail car is at origin, enroute or at destination.</p>
Port Unloads	<p>Count of rail cars reported by railways as unloaded at the western port destinations of Vancouver, Prince Rupert and Thunder Bay.</p> <p>Unload counts include all rail cars (hopper cars and boxcars) unloaded by all receivers including major port terminals, transloaders and other receivers.</p>
Cars Arrived	<p>Count of rail cars reported as arrived at the destination railway terminal.</p>
Cars Received in Interchange	<p>Count of rail cars received in interchange by each railway within a destination railway terminal. Interchange activity is tracked for the Vancouver and Thunder Bay pipelines as applicable.</p>
Cars Delivered in Interchange	<p>Count of rail cars delivered in interchange by each railway within a destination railway terminal. Interchange activity is tracked for the Vancouver and Thunder Bay pipelines as applicable.</p>
Cars Placed for Unloading	<p>Count of rail cars reported by the railways as placed loaded at the receiver's facility for unloading.</p>
Loads on Wheels at Destination	<p>Count of rail cars that remain under load within the destination railway terminal including rail cars that have been reported as placed for unloading but not yet reported as unloaded.</p>
Waiting Placement for Unloading	<p>Count of rail cars that have been reported as arrived at the destination railway terminal but not reported as placed for unloading by the railway.</p> <p>For the Ports of Vancouver, Prince Rupert and Thunder Bay the count of rail cars waiting placement for unloading is categorized by age – i.e. the elapsed time from arrival at destination to the current report date.</p>