

Speed Read

- Loads on Wheels
 - System volumes declined last week with average daily loads on wheels at 11,000 cars per day - the lowest level seen in more than two months. The decline in traffic levels is expected to continue this week reflecting lower shipper demand as the grain year turns over.
 - Volumes increased slightly yesterday reflecting slightly higher levels on CN offset by reduced volumes on CP.
- Cars Not Moving
 - The count of loaded cars not moving for 2+ days declined slightly yesterday reflecting lower counts on CP while CN counts were largely unchanged.
- Port Unloads
 - West coast unloads (1,001) returned above the 1,000 car threshold for only the fourth time in the last two weeks.

Loads on Wheels

- Loads on wheels increased slightly by 1% (+129) overnight and have now increased for the fourth consecutive day, due to higher volumes on CN offset by lower traffic on CP - combined total at 11,047 and 4% below the trailing 30-day average.
- On a net basis, the increase in loads on wheels reflects higher traffic in the Thunder Bay, E. Canada and Prince Rupert corridors offset by lower traffic in the Vancouver and USA/MEX corridors.
- CN volumes rose 3% (+204) overnight and have now increased for the fourth consecutive day, with higher volumes in the E. Canada, Thunder Bay and Prince Rupert corridors offset by lower traffic in the Vancouver and USA/MEX corridors. System wide CN loads on wheels presently at 7,114 and 8% above the trailing 30-day average.
- CP volumes declined 2% (-75) overnight, driven by a decline in traffic in the Vancouver and E. Canada corridors offset by a rise in traffic in the Thunder Bay and USA/MEX corridors. CP system wide loads on wheels now at 3,889 and 19% below the trailing 30-day average.
- Vancouver now at 5,945, declined 4% (-267) overnight, now 10% below the trailing 30-day average.
- The Prince Rupert pipeline currently at 1,762, the highest seen in the last 30 days, rose 2% (+36) overnight, and 21% above the trailing 30-day average.
- Thunder Bay volumes rose significantly by 12% (+226) overnight - now at 2,106 and 11% below the trailing 30-day average, with 60% of traffic moving on CP.

Hopper Car Rationing

- CN rationed no hopper car orders in week 52. Preliminary shipper reporting indicates no rationing occurred in week 01 (last week).

Loads Not Moving

- **The count of cars not moving for 48+ hours decreased 4% (-108) overnight, marking reduced counts on CP offset by higher counts on CN. Idle car counts currently at 2,739 and 1% above the trailing 30-day average.**
- CN
 - **The count of idle cars for 48+ hours rose marginally by 1% (+10) overnight - currently at 1,896 cars.**
 - The number of cars idle for 4+ days remained unchanged (0) overnight - now at 716 cars.
 - The count of cars not moving for 7+ days declined 9% (-34) overnight - currently at 347 cars.
 - Vancouver represents 46% of all idle cars.
 - In total 60% of all idle cars are dwelling at origin locations.
- CP

- **CP idle car counts for 48+ hours declined 12% (-118) overnight - currently at 843 cars.**
- The number of cars idle for 4+ days declined 6% (-38) overnight - currently at 567 cars.
- The number of cars idle for 7+ days declined 19% (-67) overnight - now at 287 cars.
- Vancouver accounts for 51% of all idle cars.
- In total 53% of all idle cars are dwelling at origin locations.

Port Performance

- CN and CP reported a total of 1,096 cars unloaded at the three major ports, now 16% below the trailing 30-day average. Week 1 unloads finished behind last week's pace by more than 100 unloads, marking lower unloads at Thunder Bay and Vancouver offset by higher unloads at Prince Rupert.
- Vancouver
 - 816 unloads reported by CN and CP at the Port of Vancouver; CN - 480 and CP - 336. Week 1 unloads finished behind last week's performance by fewer than 350 unloads.
 - There are more than 1,500 cars on site at Vancouver with 1,000 cars arriving at the port in the last 24 hours.
 - CN and CP have more than 500 cars in British Columbia en route to Vancouver, with more than 150 cars at Kamloops and west, and 54% of traffic moving on CN.
- Prince Rupert
 - Prince Rupert reported 185 unloads, finished ahead of last week's unloads by more than 550 unloads.
 - Loads on wheels now above 1,000 cars - currently at 1,762 cars.
 - There are 200 cars west of Jasper en route to Prince Rupert.
 - There are 4 cars on site at Prince Rupert with zero cars arriving at the port in the last 24 hours.
- Thunder Bay
 - 95 unloads, the lowest seen in the last 30 days, were reported at Thunder Bay yesterday. Week 1 unloads concluded behind last week's pace by 350 unloads.
 - There are more than 1,150 cars on site at Thunder Bay with fewer than 450 cars arriving at the port in the prior 24 hours.
 - There are more than 350 cars en route to Thunder Bay from Winnipeg and east.

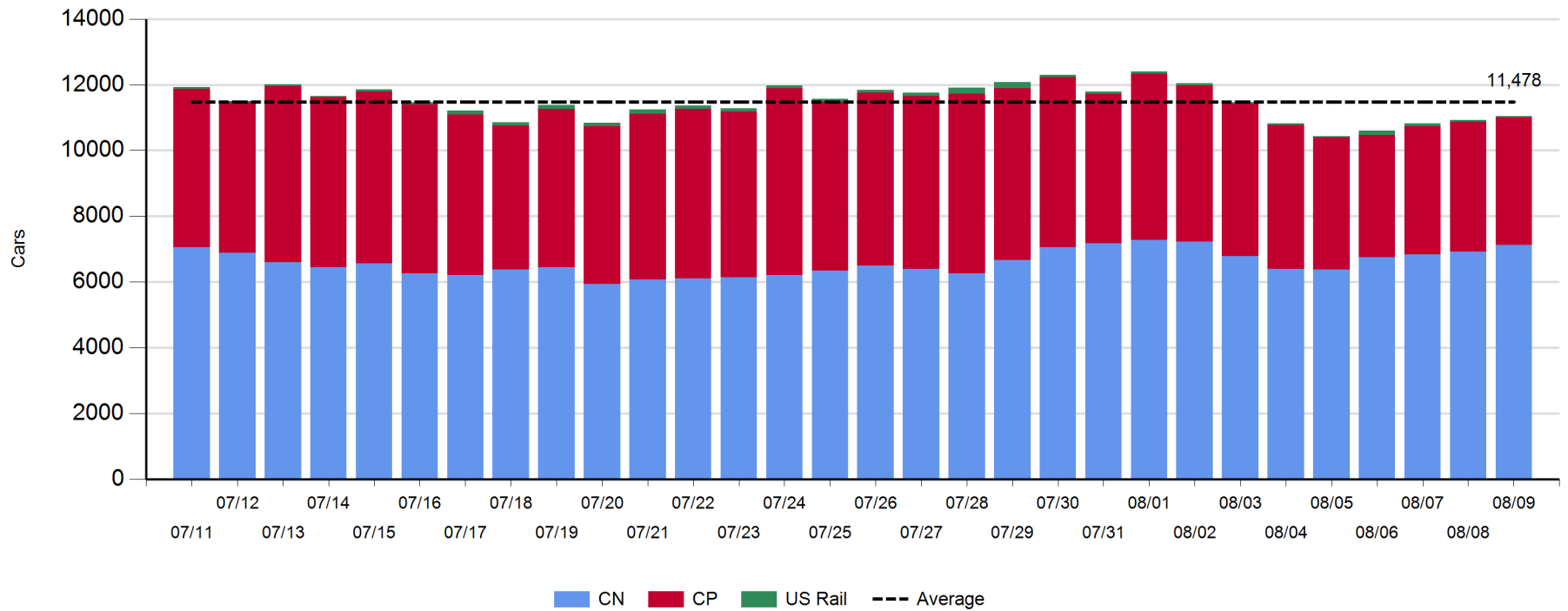
Daily Loads on Wheels - 8/9/2020

	E Canada	Prince Rupert	Thunder Bay	USA/MEX	Vancouver	Total
CN	803	1,762	838	187	3,524	7,114
CP	77		1,268	133	2,411	3,889
Short Line					10	10
US Rail				34		34
	880	1,762	2,106	354	5,945	11,047

Change in Loads on Wheels - Prior 24 Hours

	E Canada	Prince Rupert	Thunder Bay	USA/MEX	Vancouver	Total
CN	143	36	80	-2	-53	204
CP	-8		146	1	-214	-75
Short Line					0	0
US Rail				0		0
	135	36	226	-1	-267	129

Loads on Wheels - Prior 30 Days



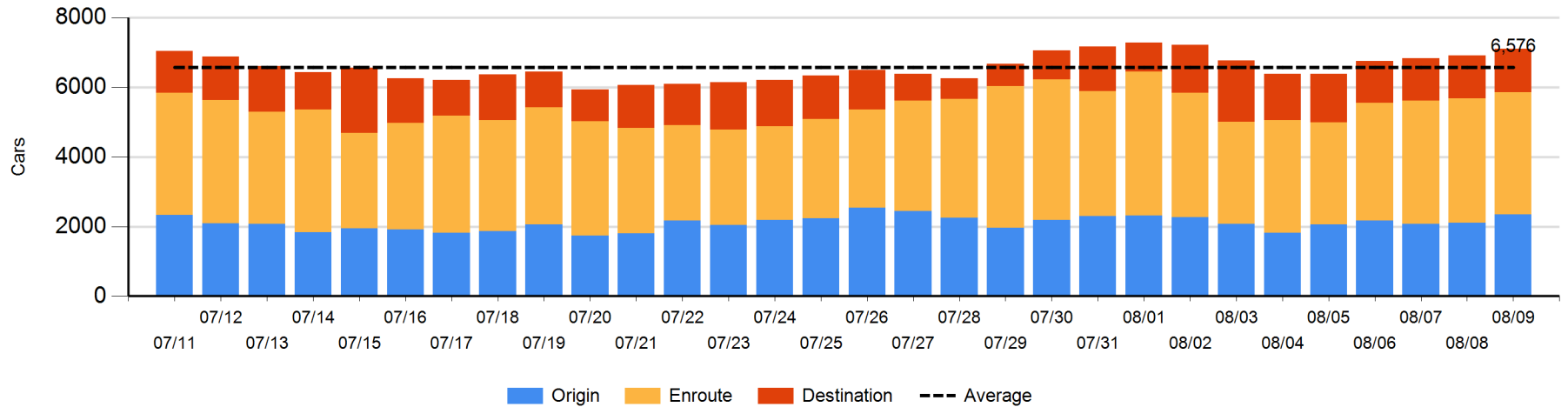
Daily Loads on Wheels By Pipeline Location - 8/9/2020

	E Canada	Prince Rupert	Thunder Bay	USA/MEX	Vancouver	Total
CN						
Origin	190	830	98	12	1,223	2,353
Enroute	575	928	184	173	1,637	3,497
Destination	38	4	556	2	664	1,264
	803	1,762	838	187	3,524	7,114
CP						
Origin	50		113	30	591	784
Enroute	12		534	102	982	1,630
Destination	15		621	1	838	1,475
	77		1,268	133	2,411	3,889
US Rail / Short Line						
Origin						
Enroute				25		25
Destination				9	10	19
				34	10	44

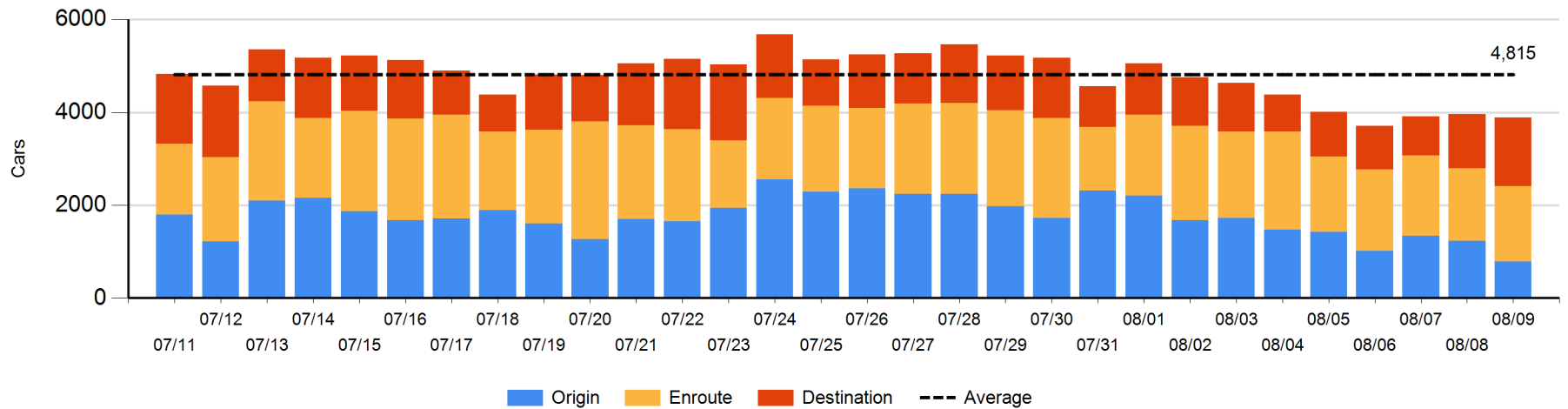
Change in Daily Loads on Wheels By Pipeline Location - Prior 24 Hours

	E Canada	Prince Rupert	Thunder Bay	USA/MEX	Vancouver	Total
CN						
Origin	134	73	98	0	-66	239
Enroute	-5	148	-234	-1	28	-64
Destination	14	-185	216	-1	-15	29
	143	36	80	-2	-53	204
CP						
Origin	0		-38	0	-403	-441
Enroute	1		63	1	-3	62
Destination	-9		121	0	192	304
	-8		146	1	-214	-75
US Rail / Short Line						
Origin						
Enroute				-3		-3
Destination				3	0	3
				0	0	0

CN Loads on Wheels by Pipeline Location - 8/9/2020



CP Loads on Wheels by Pipeline Location - 8/9/2020

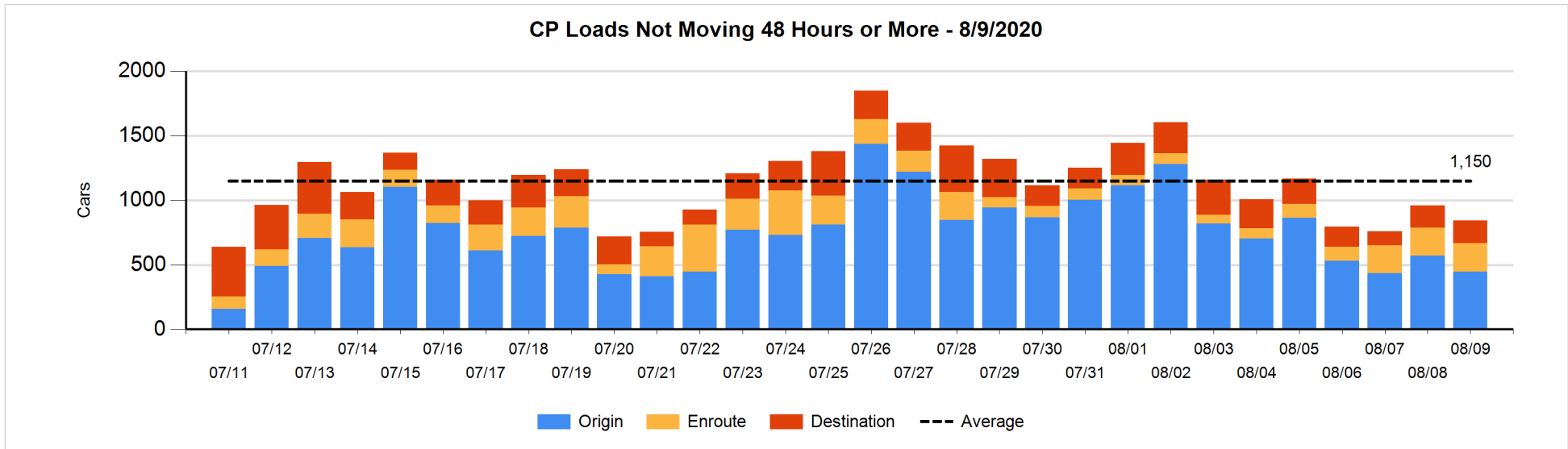
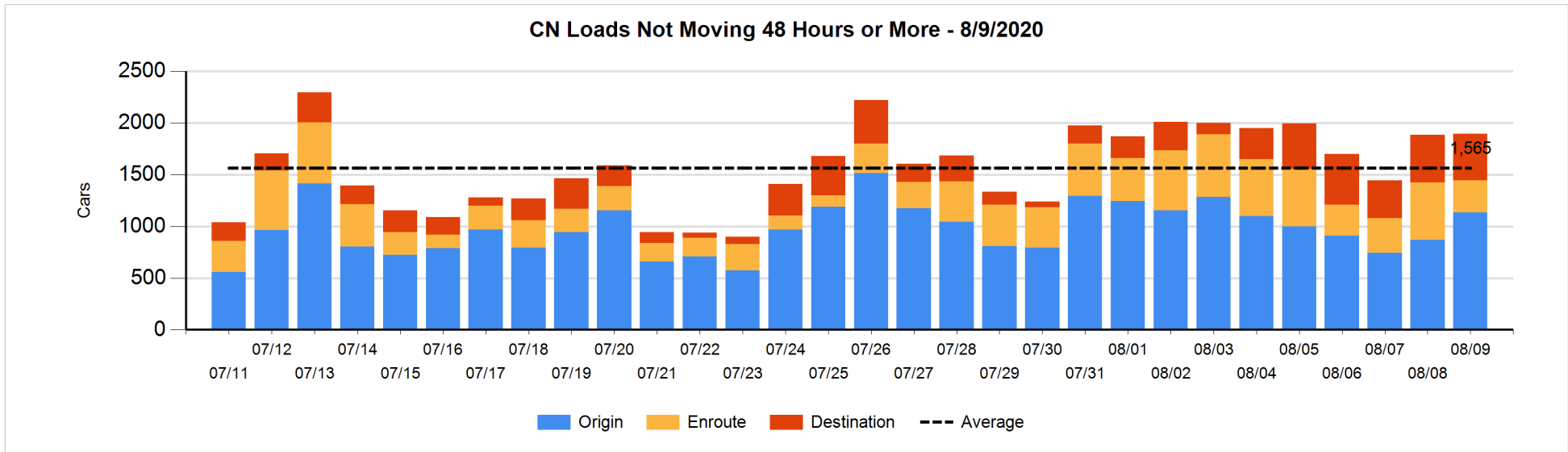


Loads Not Moving 48 Hours or More - 8/9/2020

	E Canada	Prince Rupert	Thunder Bay	USA/MEX	Vancouver	Total
CN						
Origin	56	505		12	561	1134
Enroute	85	87	2	74	61	309
Destination	18	4	187		244	453
	159	596	189	86	866	1896
CP						
Origin	50		1	30	367	448
Enroute	2		116	98	4	220
Destination			115	1	59	175
	52		232	129	430	843
US Rail / Short Line						
Origin						
Enroute				18		18
Destination				6		6
				24		24

Change in Loads Not Moving 48 Hours or More - 8/9/2020

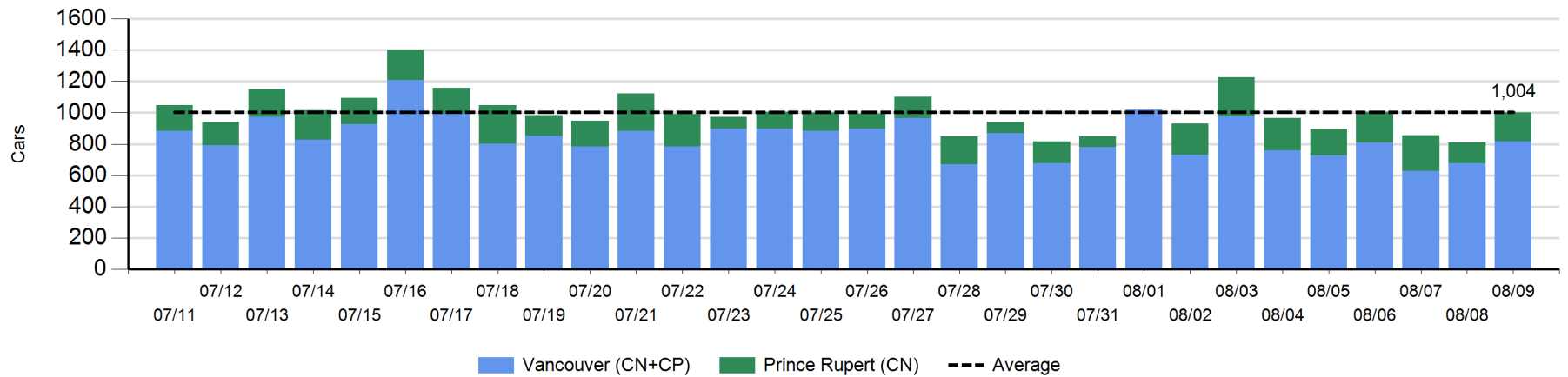
	E Canada	Prince Rupert	Thunder Bay	USA/MEX	Vancouver	Total
CN						
Origin	3	253		5	7	268
Enroute	-65	48	0	10	-244	-251
Destination	13	2	68		-90	-7
	-49	303	68	15	-327	10
CP						
Origin	0		0	1	-123	-122
Enroute	0		2	-1	2	3
Destination	-14		6	0	9	1
	-14		8	0	-112	-118
US Rail / Short Line						
Origin						
Enroute				6		6
Destination				1		1
				7		7



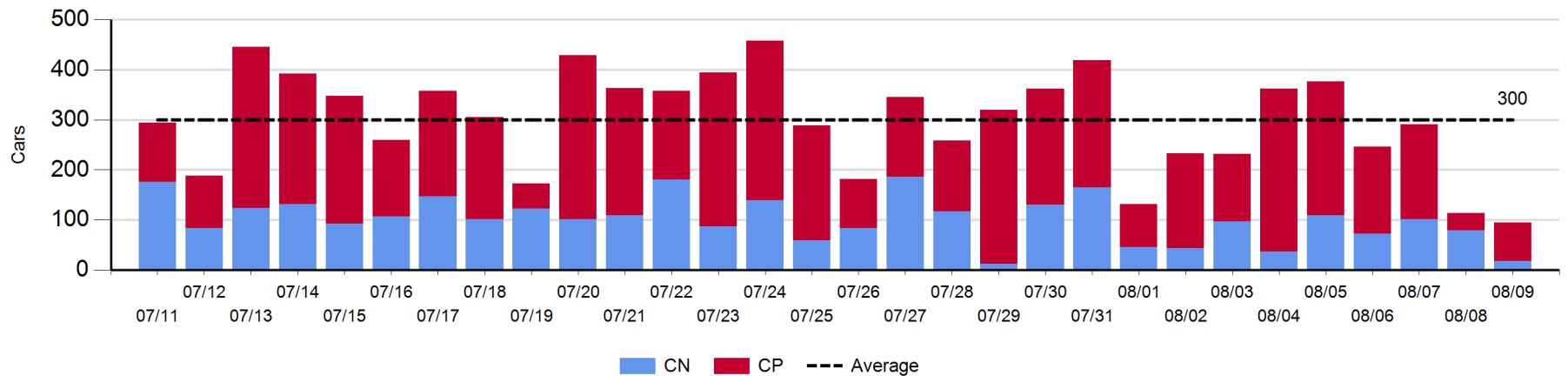
Port Unloads - 8/9/2020

	Prince Rupert	Vancouver	West Coast Total	Thunder Bay	Total
CN	185	480	665	18	683
CP		336	336	77	413
	185	816	1,001	95	1,096

West Coast Port Unloads - Prior 30 Days



Thunder Bay Port Unloads - Prior 30 Days



Port Terminal Status

Vancouver

Daily Activity for 8/9/2020

	Cars Arrived	Cars Received in Interchange	Cars Delivered in Interchange	Cars Placed for Unloading	Loads on Wheels at Destination As of 8/9/2020
CN	355	147	163	367	664
CP	643	163	147	365	838
SRY					10

Port Unloads

	08/09	08/08	Week To Date	Last Week
CN	480	226	2,909	2,943
CP	336	450	2,482	2,771
SRY			17	25

Age Profile of Loaded Cars Waiting Placement for Unloading

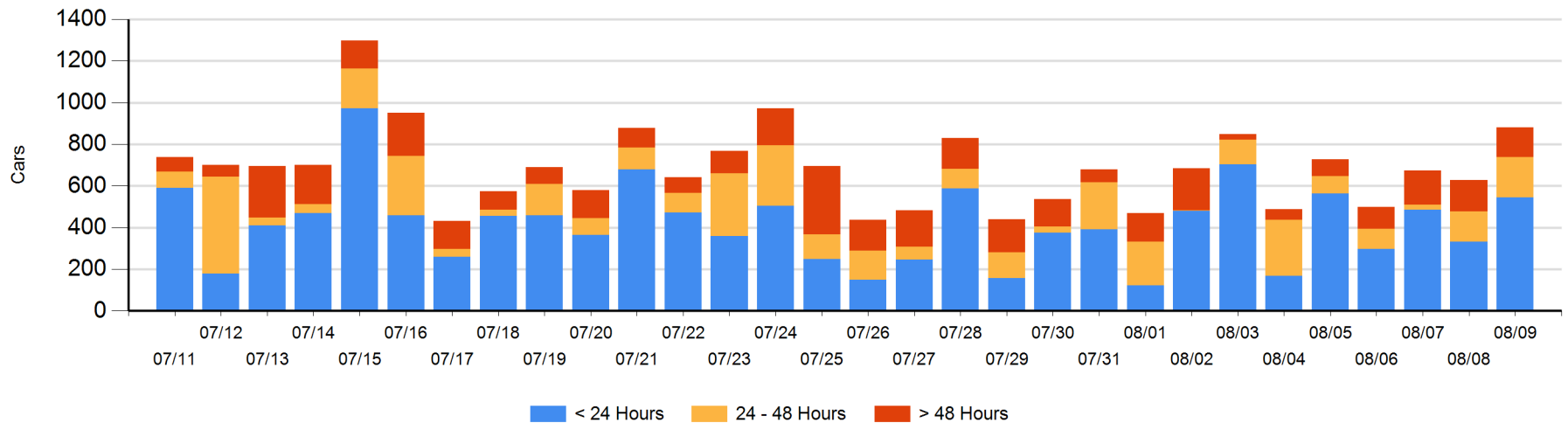
Today

	< 24 Hrs	24 - 48 Hrs	> 48-72 Hrs	> 72 Hrs	Total On Hand
CN	161	108	5	30	304
CP	384	86		108	578
SRY					0

Change in Last 24 Hours

	< 24 Hrs	24-48 Hrs	48 - 72 Hrs	> 72 Hrs
CN	30	49	-15	20
CP	184	0	-4	-11
SRY				

Loaded Cars on Hand Vancouver Waiting for Placement - Last 30 Days All Railways



Port Terminal Status

Prince Rupert

Daily Activity for 8/9/2020

Cars Arrived	Cars Received in Interchange	Cars Delivered in Interchange	Cars Placed for Unloading	Loads on Wheels at Destination As of 8/9/2020
				4
CN				

Port Unloads

	08/09	08/08	Week To Date	Last Week
CN	185	133	1,364	795

Age Profile of Loaded Cars Waiting Placement for Unloading

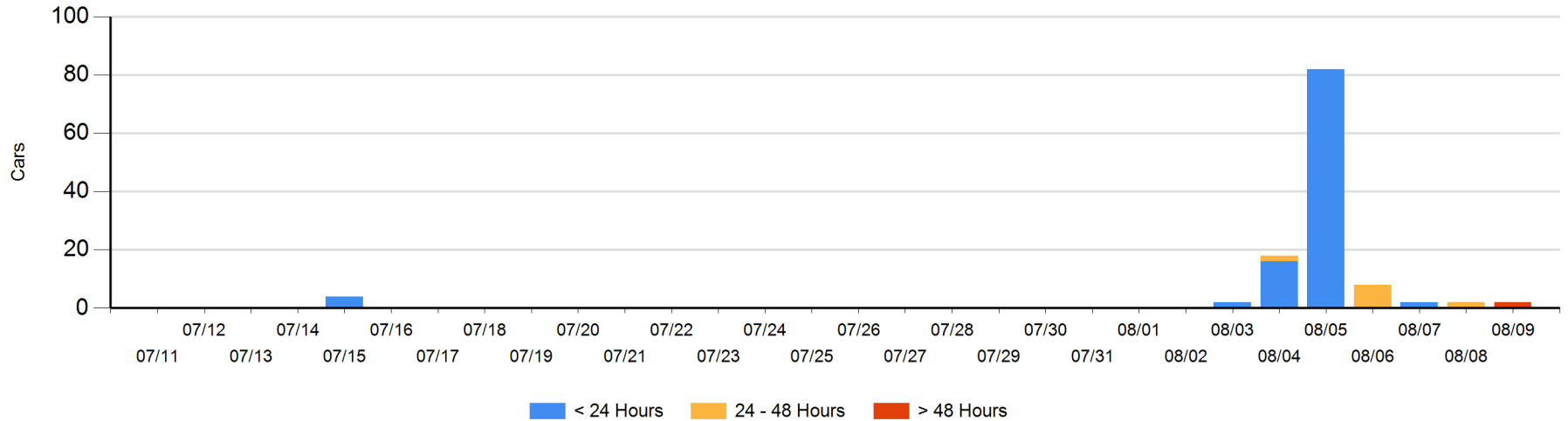
Today

	< 24 Hrs	24 - 48 Hrs	> 48-72 Hrs	> 72 Hrs	Total On Hand
CN			2		2

Change in Last 24 Hours

	< 24 Hrs	24-48 Hrs	48 - 72 Hrs	> 72 Hrs
CN		-2		2

Loaded Cars on Hand Prince Rupert Waiting for Placement - Last 30 Days All Railways



Port Terminal Status

Thunder Bay

Daily Activity for 8/9/2020

	Cars Arrived	Cars Received in Interchange	Cars Delivered in Interchange	Cars Placed for Unloading	Loads on Wheels at Destination As of 8/9/2020
CN	234			137	556
CP	198			38	621

Port Unloads

	08/09	08/08	Week To Date	Last Week
CN	18	79	514	700
CP	77	35	1,203	1,368

Age Profile of Loaded Cars Waiting Placement for Unloading

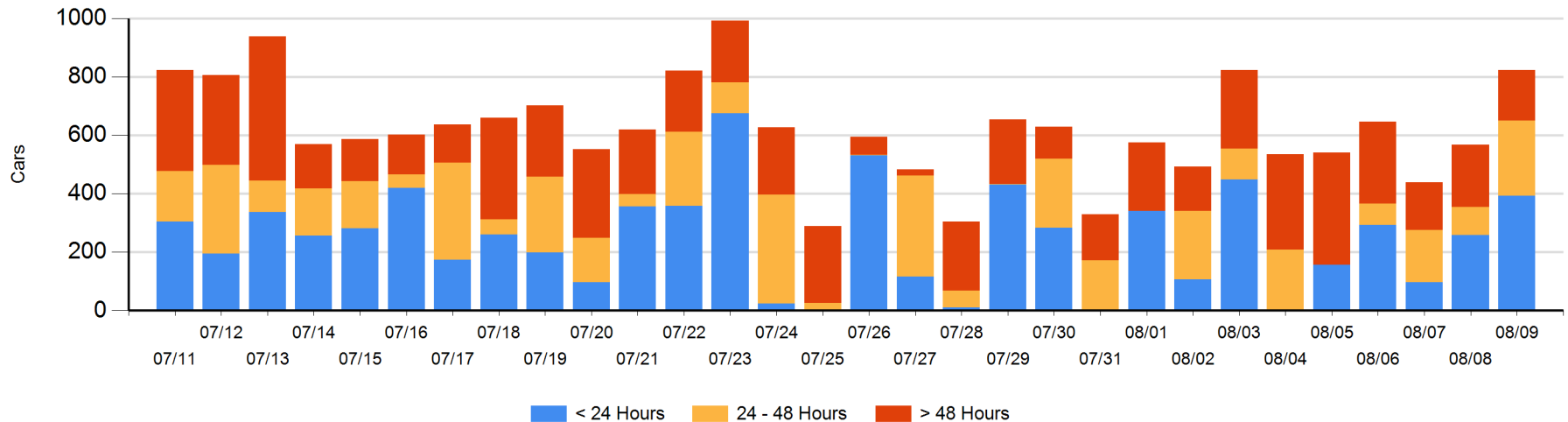
Today

	< 24 Hrs	24 - 48 Hrs	> 48-72 Hrs	> 72 Hrs	Total On Hand
CN	194			109	303
CP	198	258		64	520

Change in Last 24 Hours

	< 24 Hrs	24-48 Hrs	48 - 72 Hrs	> 72 Hrs
CN	194	-97		0
CP	-60	258	-65	25

Loaded Cars on Hand Thunder Bay Waiting for Placement - Last 30 Days All Railways



Measurement Definitions

Loads on Wheels	<p>Count of loaded rail cars including all rail cars that have been released loaded at origin and have not been reported by the railway as unloaded at destination.</p> <p>Counts include all rail cars (hopper cars and boxcars) moving within a pipeline.</p>
Loads Not Moving	<p>Loaded rail cars for which the railways have not reported a movement event for 48 hours or more whether the rail car is at origin, enroute or at destination.</p>
Port Unloads	<p>Count of rail cars reported by railways as unloaded at the western port destinations of Vancouver, Prince Rupert and Thunder Bay.</p> <p>Unload counts include all rail cars (hopper cars and boxcars) unloaded by all receivers including major port terminals, transloaders and other receivers.</p>
Cars Arrived	<p>Count of rail cars reported as arrived at the destination railway terminal.</p>
Cars Received in Interchange	<p>Count of rail cars received in interchange by each railway within a destination railway terminal. Interchange activity is tracked for the Vancouver and Thunder Bay pipelines as applicable.</p>
Cars Delivered in Interchange	<p>Count of rail cars delivered in interchange by each railway within a destination railway terminal. Interchange activity is tracked for the Vancouver and Thunder Bay pipelines as applicable.</p>
Cars Placed for Unloading	<p>Count of rail cars reported by the railways as placed loaded at the receiver's facility for unloading.</p>
Loads on Wheels at Destination	<p>Count of rail cars that remain under load within the destination railway terminal including rail cars that have been reported as placed for unloading but not yet reported as unloaded.</p>
Waiting Placement for Unloading	<p>Count of rail cars that have been reported as arrived at the destination railway terminal but not reported as placed for unloading by the railway.</p> <p>For the Ports of Vancouver, Prince Rupert and Thunder Bay the count of rail cars waiting placement for unloading is categorized by age – i.e. the elapsed time from arrival at destination to the current report date.</p>