

Speed Read

- Loads on Wheels
 - System volumes declined last week with average daily loads on wheels at 11,000 cars per day - the lowest level seen in more than two months. The decline in traffic levels is expected to continue this week reflecting lower shipper demand as the grain year turns over.
 - Volumes increased slightly yesterday for the second straight day reflecting lower volumes on CN and higher volumes on CP.
 - The small increases seen in the last two days are likely a reflection of the timing of car loading while the overall trend is expected to continue to be downward in the coming week based on shipper demand.
- Cars Not Moving
 - The count of loaded cars not moving for 2+ days declined yesterday on a system basis reflecting notably lower counts on CN while CP counts increased.
- Port Unloads
 - West coast unloads (794) saw the worst one day total in five weeks reflecting below average unloads at both west coast ports.

Loads on Wheels

- Loads on wheels rose slightly by (+30) overnight, due to higher traffic on CP offset by reduced volumes on CN - combined total at 10,934 and 4% below the trailing 30-day average.
- On a net basis, the increase in loads on wheels reflects higher volumes in the Vancouver and USA/MEX corridors offset by lower volumes in the Thunder Bay, Prince Rupert and E. Canada corridors.
- CN volumes declined 2% (-174) overnight, with reduced traffic in the Thunder Bay, Prince Rupert and E. Canada corridors offset by higher volumes in the Vancouver and USA/MEX corridors. System wide CN loads on wheels currently at 6,796 and 4% above the trailing 30-day average.
- CP volumes rose 5% (+210) overnight, driven by a rise in volumes across all corridors. CP system wide loads on wheels presently at 4,100 and 14% below the trailing 30-day average.
- Vancouver currently at 6,047, rose 4% (+246) overnight, now 8% below the trailing 30-day average.
- The Prince Rupert pipeline presently at 1,677, decreased 5% (-85) overnight, and 16% above the trailing 30-day average.
- Thunder Bay volumes decreased 7% (-144) overnight - now at 1,962 and 16% below the trailing 30-day average, with 65% of traffic moving on CP.

Hopper Car Rationing

- CN rationed no hopper car orders in week 52. Preliminary shipper reporting indicates no rationing took place in week 01 (last week).

Loads Not Moving

- The count of cars not moving for 48+ hours declined 6% (-178) overnight, marking lower counts on CN offset by higher counts on CP. Idle car counts now at 2,561 and 7% below the trailing 30-day average.
- CN
 - The count of idle cars for 48+ hours decreased 24% (-446) overnight - currently at 1,450 cars.
 - The number of cars idle for 4+ days declined 3% (-25) overnight - currently at 691 cars.
 - The count of cars not moving for 7+ days declined 14% (-50) overnight - now at 296 cars.
 - Vancouver represents 50% of all idle cars.
 - In total 54% of all idle cars are dwelling at origin locations.

- CP
 - **CP idle car counts for 48+ hours rose 32% (+268) overnight - presently at 1,111 cars.**
 - The number of cars idle for 4+ days decreased 24% (-135) overnight - now at 432 cars.
 - The number of cars idle for 7+ days fell 28% (-79) overnight - now at 208 cars.
 - Vancouver accounts for 46% of all idle cars.
 - In total 39% of all idle cars are dwelling at origin locations.

Port Performance

- CN and CP reported a total of 1,112 cars unloaded at the three major ports, now 14% below the trailing 30-day average. One day in Week 2 unloads now behind last week's pace by 350 unloads, reflecting lower unloads at Vancouver and Prince Rupert offset by higher unloads at Thunder Bay.
- Vancouver
 - 695 unloads reported by CN and CP at the Port of Vancouver; CN - 345 and CP - 350. One day in Week 2 unloads are tracking behind last week's performance by more than 250 unloads.
 - There are 1,050 cars on site at Vancouver with less than 250 cars arriving at the port in the last 24 hours.
 - CN and CP have 1,000 cars in British Columbia en route to Vancouver, with more than 350 cars at Kamloops and west, and 52% of traffic moving on CN.
- Prince Rupert
 - Prince Rupert reported 89 unloads, now behind last week's unloads after one day by more than 150 unloads.
 - Loads on wheels now above 1,000 cars - presently at 1,677 cars.
 - There are around 550 cars west of Jasper en route to Prince Rupert.
 - There are 50 cars on site at Prince Rupert with more than 100 cars arriving at the port in the last 24 hours.
- Thunder Bay
 - 328 unloads were reported at Thunder Bay yesterday. One day in Week 2 unloads are tracking ahead of last week's pace by 100 unloads.
 - There are around 1,100 cars on site at Thunder Bay with 250 cars arriving at the port in the prior 24 hours.
 - There are nearly 500 cars en route to Thunder Bay from Winnipeg and east.

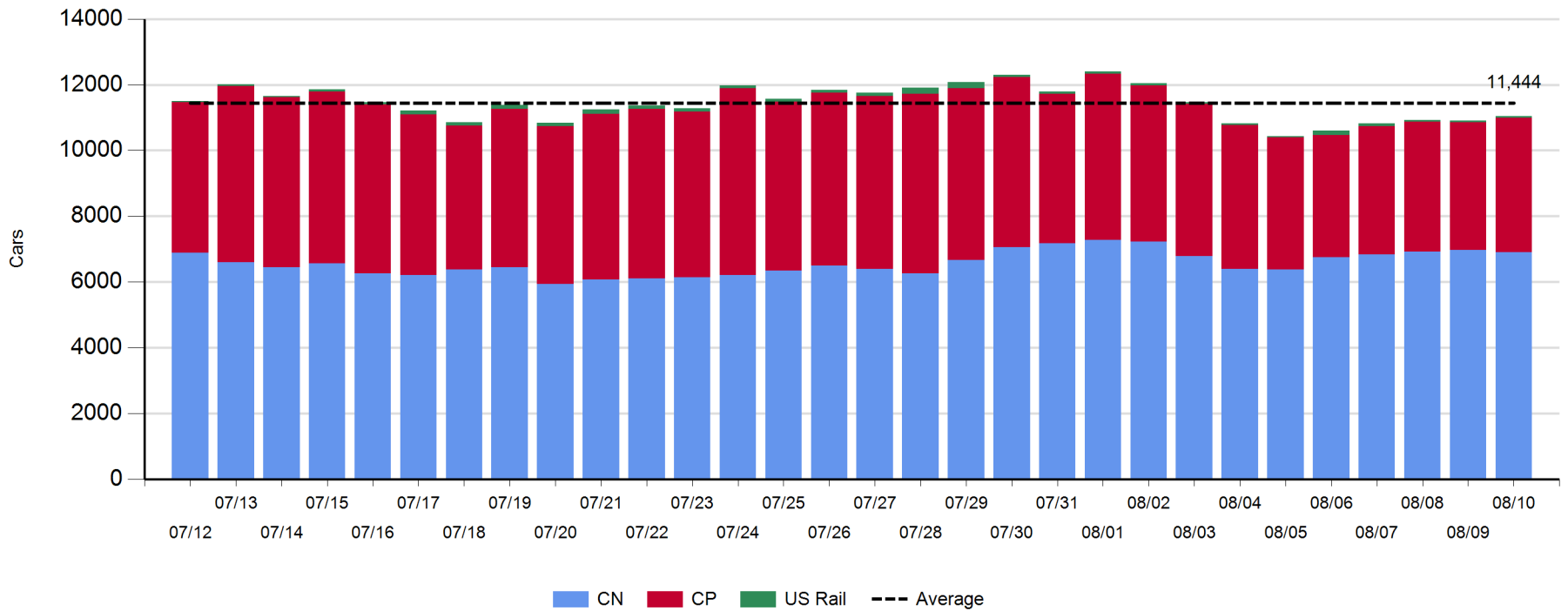
Daily Loads on Wheels - 8/10/2020

	E Canada	Prince Rupert	Thunder Bay	USA/MEX	Vancouver	Total
CN	775	1,677	693	219	3,534	6,898
CP	80		1,269	140	2,611	4,100
Short Line					4	4
US Rail				34		34
	855	1,677	1,962	393	6,149	11,036

Change in Loads on Wheels - Prior 24 Hours

	E Canada	Prince Rupert	Thunder Bay	USA/MEX	Vancouver	Total
CN	-28	-85	-145	32	154	-72
CP	3		1	6	200	210
Short Line					-6	-6
US Rail				0		0
	-25	-85	-144	38	348	132

Loads on Wheels - Prior 30 Days

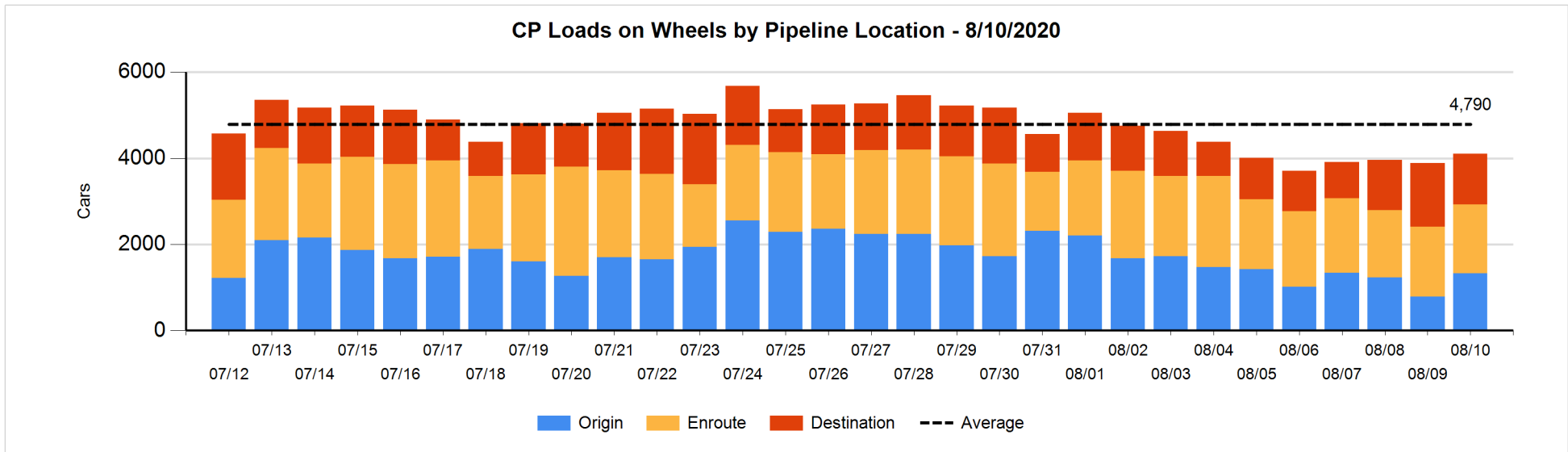
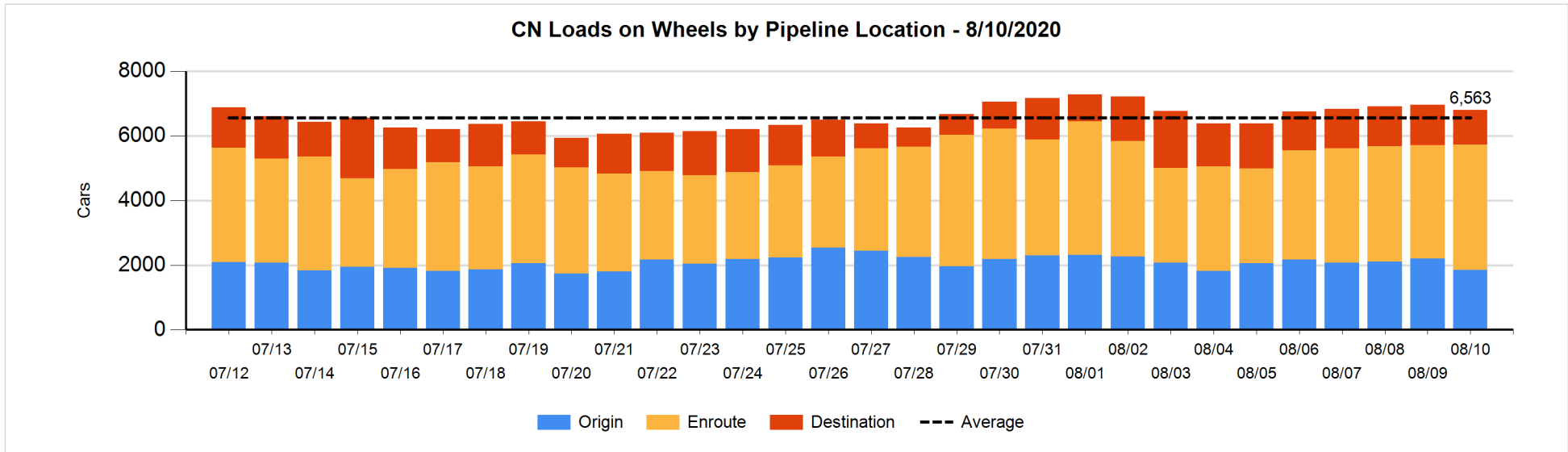


Daily Loads on Wheels By Pipeline Location - 8/10/2020

	E Canada	Prince Rupert	Thunder Bay	USA/MEX	Vancouver	Total
CN						
Origin	3	525		44	1,276	1,848
Enroute	727	1,109	158	174	1,712	3,880
Destination	45	43	535	1	444	1,068
	775	1,677	693	219	3,432	6,796
CP						
Origin	50		224	37	1,012	1,323
Enroute	13		491	101	1,001	1,606
Destination	17		554	2	598	1,171
	80		1,269	140	2,611	4,100
US Rail / Short Line						
Origin						
Enroute				20		20
Destination				14	4	18
				34	4	38

Change in Daily Loads on Wheels By Pipeline Location - Prior 24 Hours

	E Canada	Prince Rupert	Thunder Bay	USA/MEX	Vancouver	Total
CN						
Origin	-187	-305	-98	32	197	-361
Enroute	152	181	-26	1	75	383
Destination	7	39	-21	-1	-220	-196
	-28	-85	-145	32	52	-174
CP						
Origin	0		111	7	421	539
Enroute	1		-43	-1	19	-24
Destination	2		-67	0	-240	-305
	3		1	6	200	210
US Rail / Short Line						
Origin						
Enroute				-5		-5
Destination				5	-6	-1
				0	-6	-6

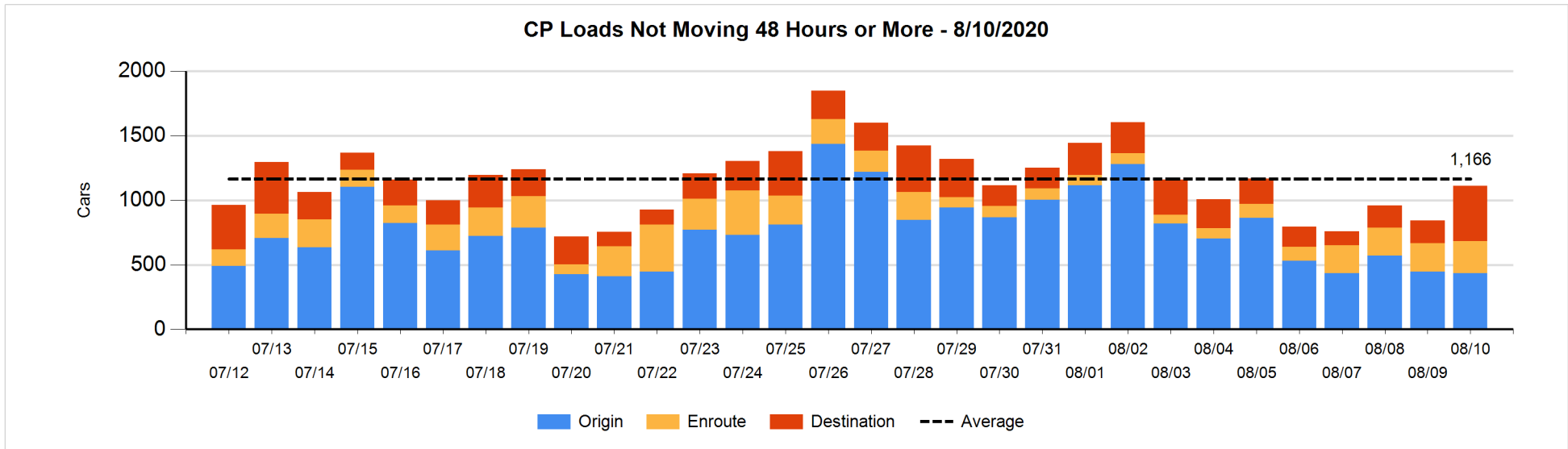
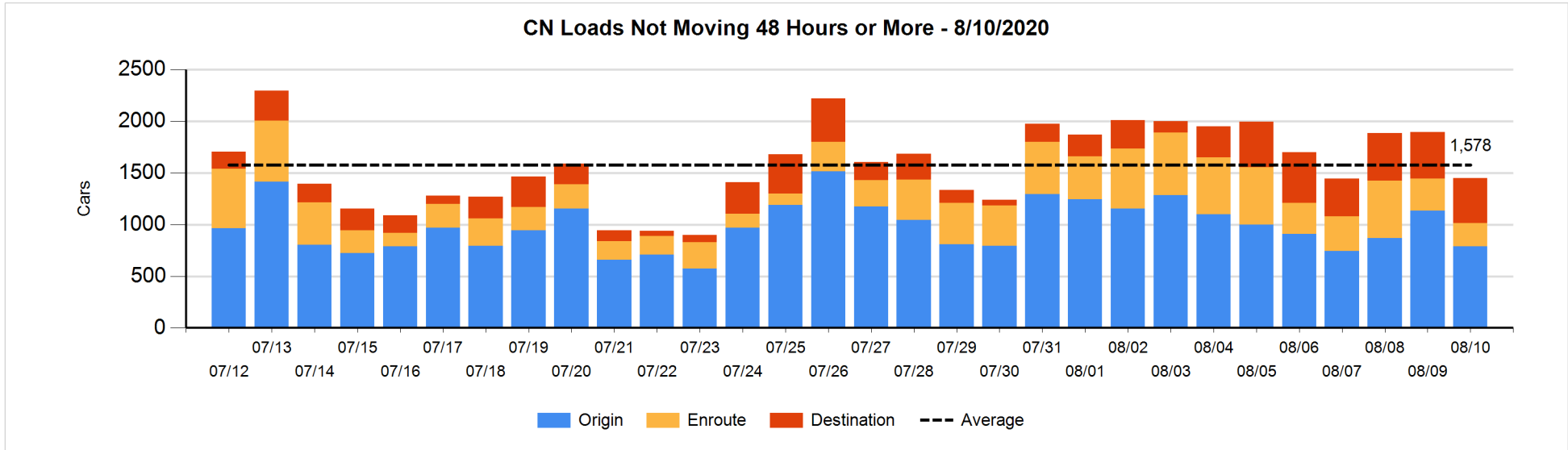


Loads Not Moving 48 Hours or More - 8/10/2020

	E Canada	Prince Rupert	Thunder Bay	USA/MEX	Vancouver	Total
CN						
Origin	3	300		12	472	787
Enroute	102	15	1	98	9	225
Destination	9	4	174		251	438
	114	319	175	110	732	1450
CP						
Origin	50		1	30	354	435
Enroute	5		138	98	5	246
Destination	9		272	1	148	430
	64		411	129	507	1111
US Rail / Short Line						
Origin						
Enroute				15		15
Destination				5		5
				20		20

Change in Loads Not Moving 48 Hours or More - 8/10/2020

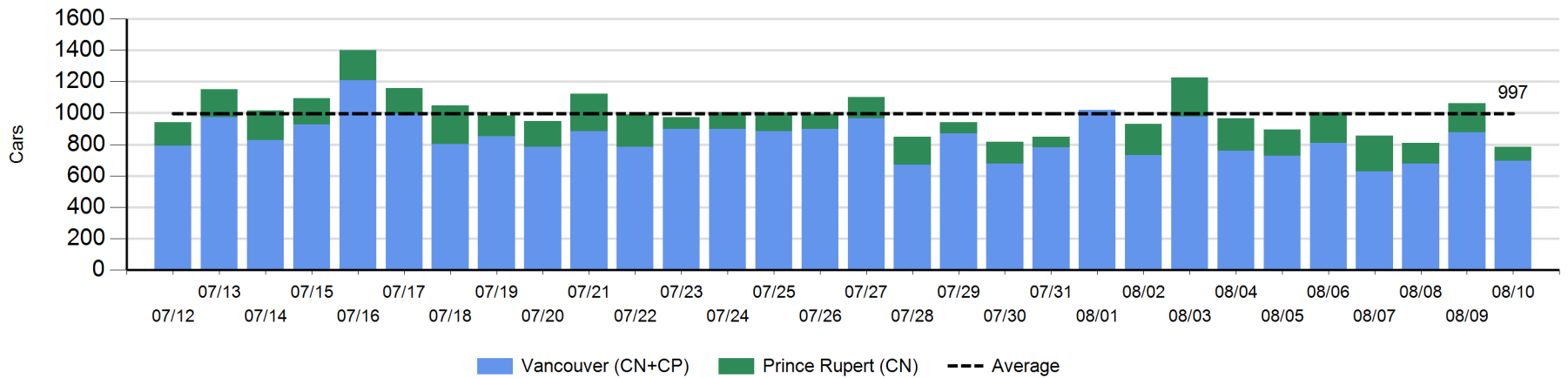
	E Canada	Prince Rupert	Thunder Bay	USA/MEX	Vancouver	Total
CN						
Origin	-53	-205		0	-89	-347
Enroute	17	-72	-1	24	-52	-84
Destination	-9	0	-13		7	-15
	-45	-277	-14	24	-134	-446
CP						
Origin	0		0	0	-13	-13
Enroute	3		22	0	1	26
Destination	9		157	0	89	255
	12		179	0	77	268
US Rail / Short Line						
Origin						
Enroute				-3		-3
Destination				-1		-1
				-4		-4



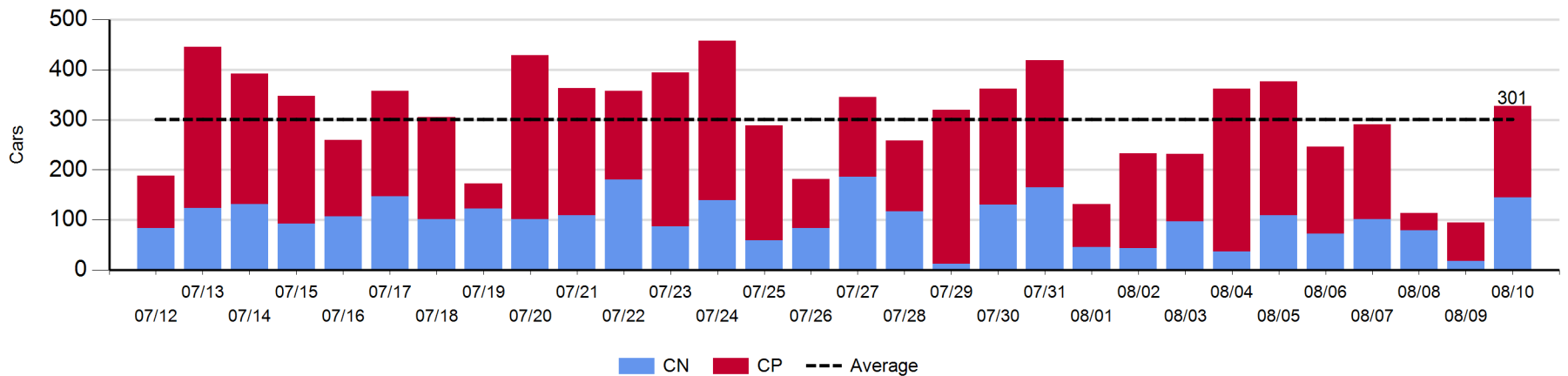
Port Unloads - 8/10/2020

	Prince Rupert	Vancouver	West Coast Total	Thunder Bay	Total
CN	89	345	434	145	579
CP		350	350	183	533
	89	695	784	328	1,112

West Coast Port Unloads - Prior 30 Days



Thunder Bay Port Unloads - Prior 30 Days



Port Terminal Status

Vancouver

Daily Activity for 8/10/2020

	Cars Arrived	Cars Received in Interchange	Cars Delivered in Interchange	Cars Placed for Unloading	Loads on Wheels at Destination As of 8/10/2020
CN	172		104	224	444
CP	61	104	2	335	598
SRY		2		10	4

Port Unloads

	08/10	08/09	Week To Date	Last Week
CN	345	482	345	2,911
CP	350	396	350	2,542
SRY	10		10	17

Age Profile of Loaded Cars Waiting Placement for Unloading

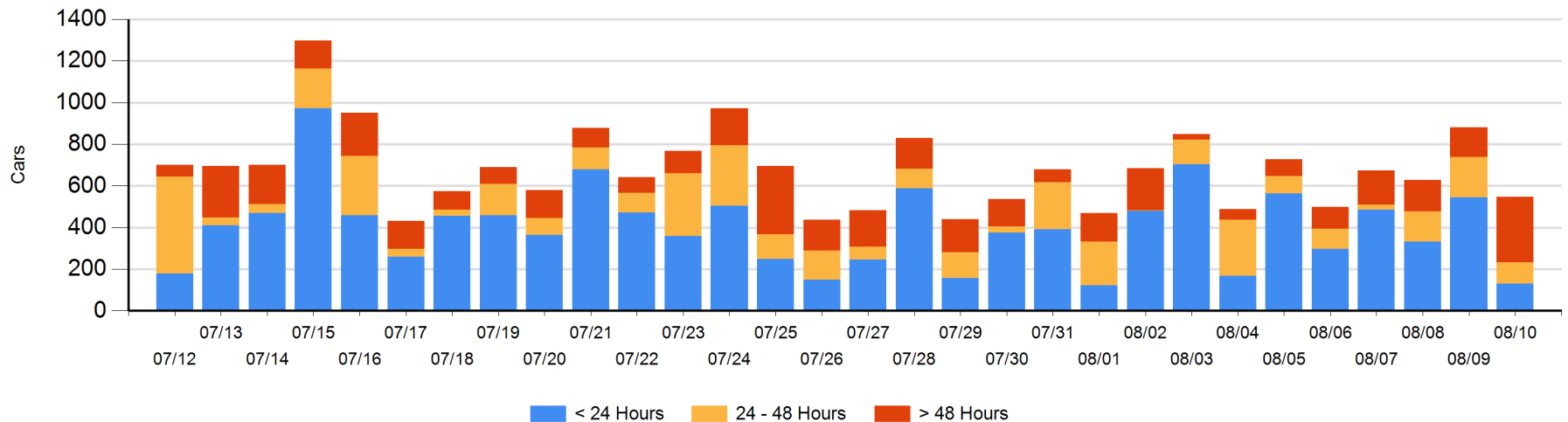
Today

	< 24 Hrs	24 - 48 Hrs	> 48-72 Hrs	> 72 Hrs	Total On Hand
CN	68	4	108	32	212
CP	61	99	82	93	335
SRY					0

Change in Last 24 Hours

	< 24 Hrs	24-48 Hrs	48 - 72 Hrs	> 72 Hrs
CN	-92	-104	103	2
CP	-324	13	82	-15
SRY				

Loaded Cars on Hand Vancouver Waiting for Placement - Last 30 Days All Railways



Port Terminal Status

Prince Rupert

Daily Activity for 8/10/2020

	Cars Arrived	Cars Received in Interchange	Cars Delivered in Interchange	Cars Placed for Unloading	Loads on Wheels at Destination As of 8/10/2020
CN	128			128	43

Port Unloads

	08/10	08/09	Week To Date	Last Week
CN	89	185	89	1,364

Age Profile of Loaded Cars Waiting Placement for Unloading

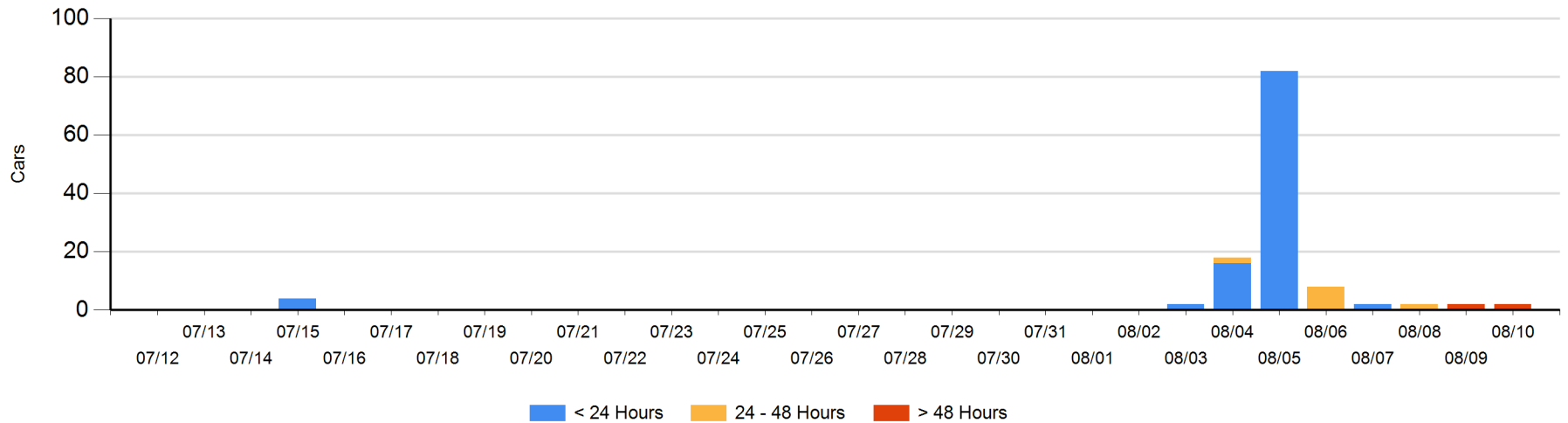
Today

	< 24 Hrs	24 - 48 Hrs	> 48-72 Hrs	> 72 Hrs	Total On Hand
CN				2	2

Change in Last 24 Hours

	< 24 Hrs	24-48 Hrs	48 - 72 Hrs	> 72 Hrs
CN			-2	2

Loaded Cars on Hand Prince Rupert Waiting for Placement - Last 30 Days All Railways



Port Terminal Status

Thunder Bay

Daily Activity for 8/10/2020

	Cars Arrived	Cars Received in Interchange	Cars Delivered in Interchange	Cars Placed for Unloading	Loads on Wheels at Destination As of 8/10/2020
CN	123			179	535
CP	116			229	554

Port Unloads

	08/10	08/09	Week To Date	Last Week
CN	145	18	145	514
CP	183	77	183	1,203

Age Profile of Loaded Cars Waiting Placement for Unloading

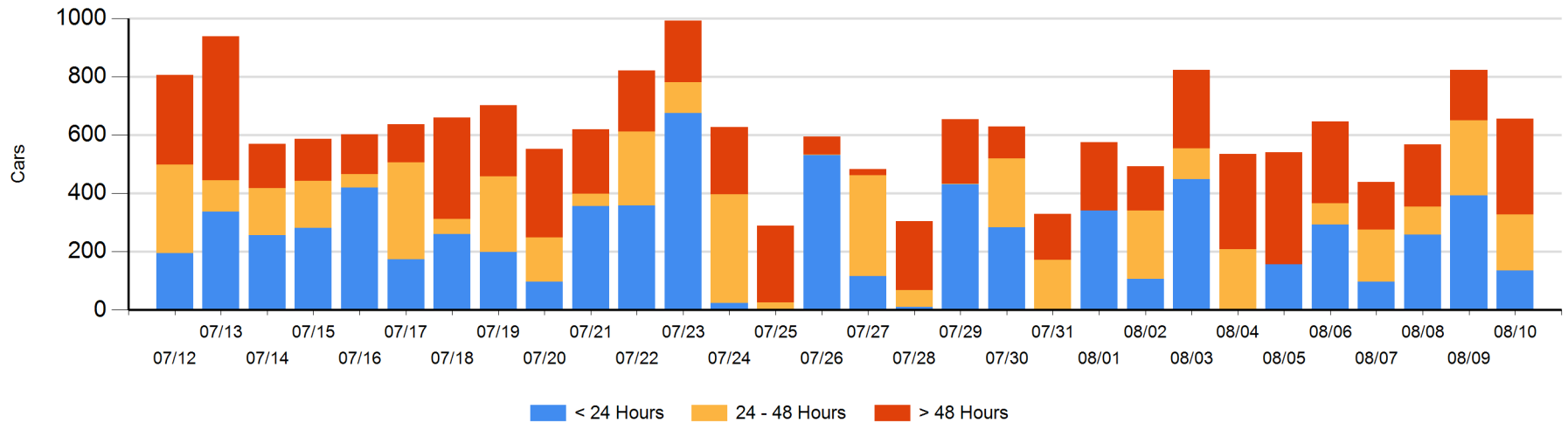
Today

	< 24 Hrs	24 - 48 Hrs	> 48-72 Hrs	> 72 Hrs	Total On Hand
CN	76	62		109	247
CP	60	129	213	7	409

Change in Last 24 Hours

	< 24 Hrs	24-48 Hrs	48 - 72 Hrs	> 72 Hrs
CN	-118	62		0
CP	-138	-129	213	-57

Loaded Cars on Hand Thunder Bay Waiting for Placement - Last 30 Days All Railways



Measurement Definitions

Loads on Wheels	<p>Count of loaded rail cars including all rail cars that have been released loaded at origin and have not been reported by the railway as unloaded at destination.</p> <p>Counts include all rail cars (hopper cars and boxcars) moving within a pipeline.</p>
Loads Not Moving	<p>Loaded rail cars for which the railways have not reported a movement event for 48 hours or more whether the rail car is at origin, enroute or at destination.</p>
Port Unloads	<p>Count of rail cars reported by railways as unloaded at the western port destinations of Vancouver, Prince Rupert and Thunder Bay.</p> <p>Unload counts include all rail cars (hopper cars and boxcars) unloaded by all receivers including major port terminals, transloaders and other receivers.</p>
Cars Arrived	<p>Count of rail cars reported as arrived at the destination railway terminal.</p>
Cars Received in Interchange	<p>Count of rail cars received in interchange by each railway within a destination railway terminal. Interchange activity is tracked for the Vancouver and Thunder Bay pipelines as applicable.</p>
Cars Delivered in Interchange	<p>Count of rail cars delivered in interchange by each railway within a destination railway terminal. Interchange activity is tracked for the Vancouver and Thunder Bay pipelines as applicable.</p>
Cars Placed for Unloading	<p>Count of rail cars reported by the railways as placed loaded at the receiver's facility for unloading.</p>
Loads on Wheels at Destination	<p>Count of rail cars that remain under load within the destination railway terminal including rail cars that have been reported as placed for unloading but not yet reported as unloaded.</p>
Waiting Placement for Unloading	<p>Count of rail cars that have been reported as arrived at the destination railway terminal but not reported as placed for unloading by the railway.</p> <p>For the Ports of Vancouver, Prince Rupert and Thunder Bay the count of rail cars waiting placement for unloading is categorized by age – i.e. the elapsed time from arrival at destination to the current report date.</p>